



5, 8 and 11 Blade 27in Reel Mower Reelmaster[®] 2000-D and 3100-D

Model No. 03210—230000001 and Up

Model No. 03237—230000001 and Up

Model No. 03239—230000001 and Up

Parts Catalog

Ordering Replacement Parts

To order replacement parts, please supply: the part number, the quantity, and the description of each part desired.

Understanding Reference Numbers

Each identified part in an illustration has a reference number. The reference number for a part also appears in the parts list, along with other information about the part.

This catalog uses two special reference number formats, one to indicate parts in a service assembly and another to indicate the quantity of a given part in an illustration.

Service Assembly Reference Numbers

Parts in service assemblies have reference numbers in the form **a:b**. The **a** represents the reference number of the entire service assembly and the **b** represents a sequential number unique to each part within the service assembly.

For example, a wheel assembly might be identified by reference number **6**, the tire by **6:1**, the valve by **6:2**, and the wheel by **6:3**. When you order the assembly identified by reference number **6**, you receive all parts identified by reference numbers **6:1**, **6:2**, and **6:3**. However, you may also order any part individually.

Reference numbers of this type appear in illustrations and in part lists.

Reference Numbers Indicating Quantity

In an illustration, if a reference number indicates more than one part, the reference number has the form **nX y**. The **n** represents the quantity of the part, the **X** is the multiplication symbol, and the **y** represents the reference number.

For example, in an illustration, the reference number **2X 37** means that two of the parts identified by reference number **37** are indicated.

Contents

Description	Page	Description	Page
Reel and Frame Assembly	3	Gauge Bar, Angle Indicator and	
Bedbar Assembly	4	Handle Assemblies	6
Roller Assembly	5		

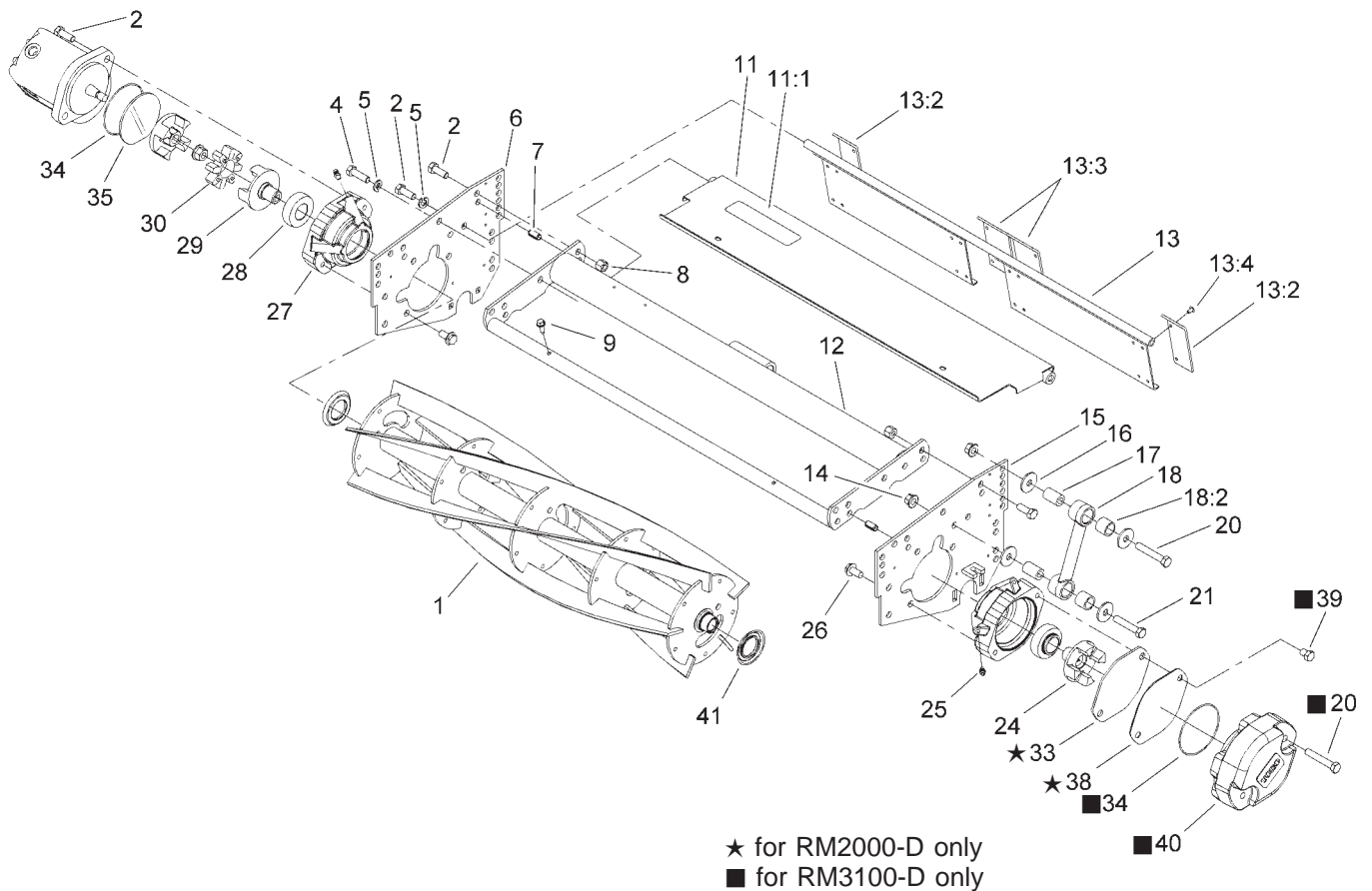
Accessories

Description	Model / Part No.	Description	Model / Part No.
Lift Arm Kit (RM2000-D)	03471	Sectional Roller	62-4970
Lift Arm Kit (RM3100-D)	03220	Anti-Scalp Roller	63-5090
Grass Basket Kit	03227	3in Diameter Wiehle Scraper Kit	104-1398
Support Kit - High HOC	104-1395	Full Roller Scraper Kit	60-9560
Conb Kit	67-9400	Fixed Cutting Unit Kit	93-6915
3in Diameter Wiehle Roller Kit	03233	Skid Kit	94-3664
Full Roller Kit	03440		

Part Description Abbreviations

Part descriptions in this catalog may include the following abbreviations.

Abbreviation	Meaning	Abbreviation	Meaning
AR	as required	HYD	hydraulic
ASM	assembly	INC	incorporated
CARR	carriage	LH	left hand
DEG	degrees	NI	nylon insert
FH	flat head	PPH	Phillips pan head
GA	gauge	PTH	Phillips truss head
HF	hex flange	PTO	power take off
HH	hex head	RH	right hand
HHF	hex head flange	SFH	slotted fillister head
HLH	hex lag head	SHH	slotted hex head
HJ	hex jam	SQH	square head
HOC	height-of-cut	SHWH	slotted hex washer head
HS	hex socket	SPH	slotted pan head
HSBH	hex socket button head	SRH	slotted round head
HSFH	hex socket flat head	STD	standard
HSH	hex socket head	TAP	self tapping
HWH	hex washer head	TTH	Torx truss head
HWHTF	hex washer head thread forming	WH	wing head



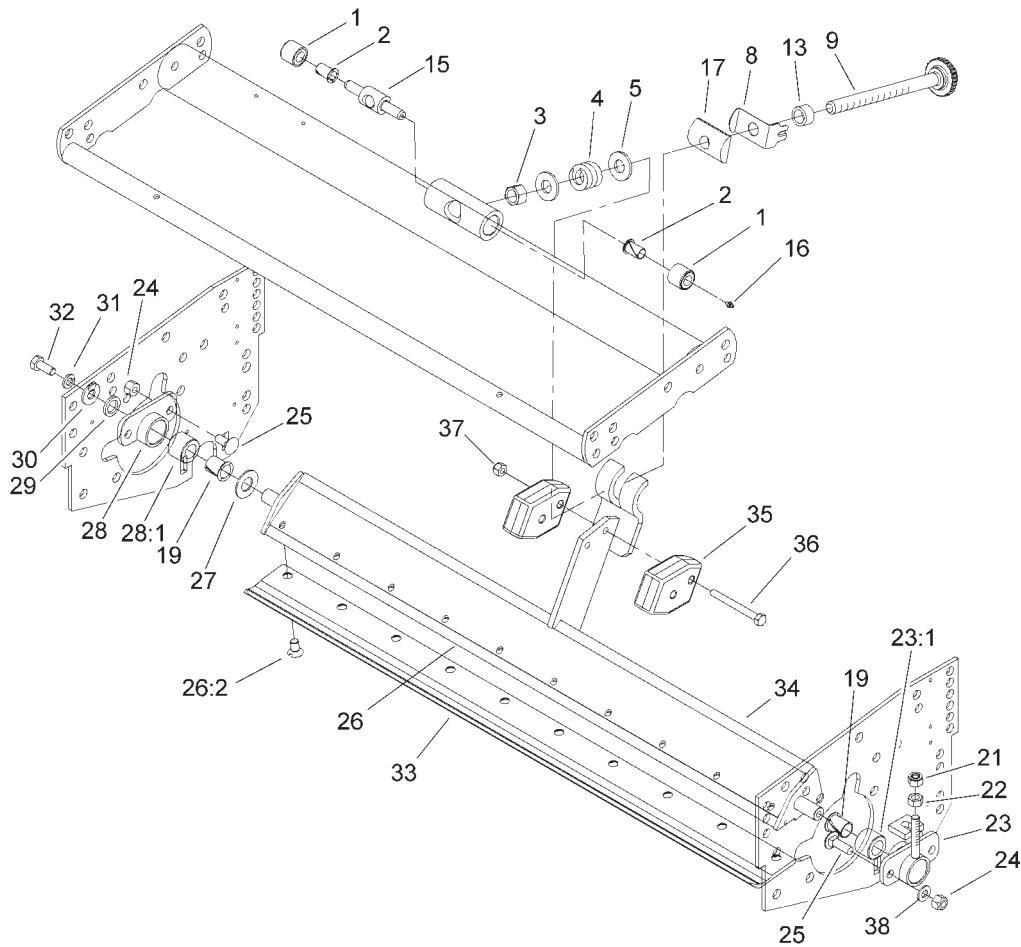
Sheet No.:2

Reel and Frame Assembly

Ref. No.	Part No.	Qty.	Description
*1	99-3483	1	Reel-Blade, 8 (only on: 03237)
*1	105-6768	1	Reel-Blade, 11 (only on: 03239)
1	99-3482	1	Reel-Blade, 5 (only on: 03210)
2	323-6	10	Screw-HH
4	323-7	2	Screw-HH
5	3253-5	4	Washer-Lock
6	94-3695-01	1	Plate-Side Reel, RH
7	32121-36	4	Pin-Spring
8	3296-39	6	Nut-Lock, NI
9	32144-10	2	Screw-HWH
11	94-3621	1	Front Grass Shield ASM
11:1	93-6688	1	Decal-Danger , Europe
11:1	94-4584	1	Decal-Danger , Japan
11:1	67-7960	1	Decal-Danger
12	95-8753-01	1	Reel Frame ASM
13	93-8849	1	Rear Grass Shield ASM
13:2	61-3280	2	Flap-Rubber
13:3	61-3290	2	Flap-Rubber , Middle
13:4	700382	12	Rivet
14	32128-36	8	Nut-HF
15	94-3697-01	1	LH Side Plate ASM

Ref. No.	Part No.	Qty.	Description
16	93-8806	16	Washer-Hardened
17	93-6981	8	Spacer
18	16-9759	4	Link ASM
18:2	94-8945	2	Bushing
20	323-1 1	6	Screw-HH
21	323-10	4	Screw-HH
24	93-8826	1	Coupler-Reel, LH Thread
25	302-5	4	Fitting-Grease
26	3234-1	4	Screw-HHF
27	99-3404	2	Housing-Bearing
28	100-4926	2	Bearing-Aligning, Self
29	93-8825	1	Coupler-Reel, RH Thread
30	93-8827	1	Spider-Coupler
33	94-5979	1	Gasket
34	353-949	2	O-Ring
35	94-2703	1	Plug
38	93-6960	1	Cover-Holder , Bearing
39	323-2	2	Screw-HH
40	105-0171-03	1	Weight-End
41	105-6761	2	Seal-Guard (only on: 03237, 03239)

* Not illustrated



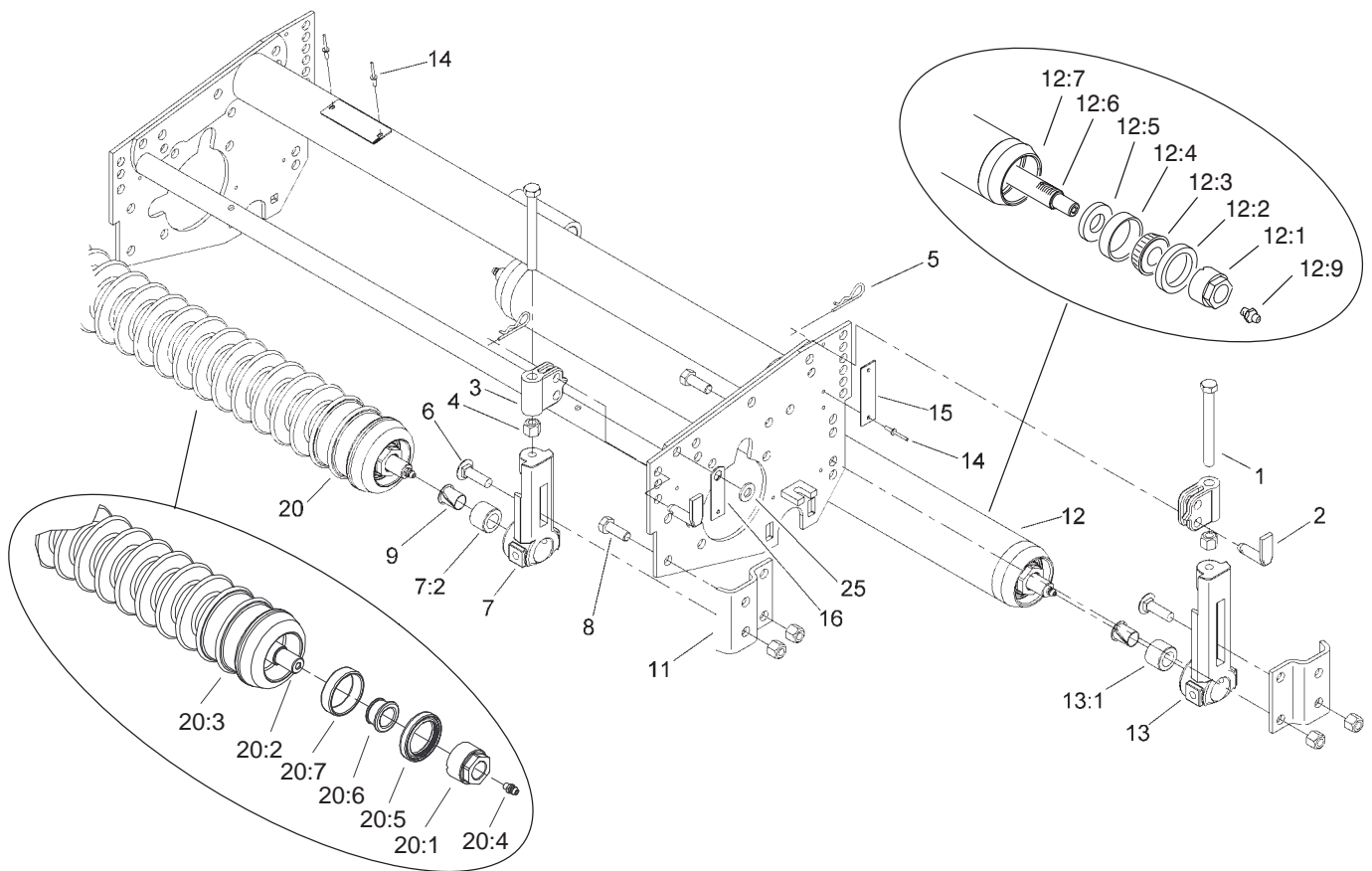
Sheet No.:3

Bedbar Assembly

Ref. No.	Part No.	Qty.	Description
1	62-5510	2	Bushing-Rubber
2	52-2890	2	Bushing-Nylon
3	3296-62	1	Nut-Lock NI
4	57-5270	1	Spring-Comp
5	29-8910	2	Washer
8	95-8752	1	Arm-Spring
9	95-8877	1	Bedbar Adjuster ASM
13	93-2959	1	Spacer-Adjuster
15	57-5260	1	Pivot-Bedbar
16	302-18	1	Fitting-Grease
17	93-2892	1	Pivot-Bedbar , Main Adj
19	56-9520	2	Bushing-Flanged
21	3296-4	1	Nut-Lock, NI
22	3219-2	1	Nut-Hex
23	16-9769	1	Bedbar Adj. Housing & Bushing ASM
23:1	56-9510	1	Bushing ASM
24	3296-29	4	Nut-Lock, NI
25	3230-2	4	Bolt-CARR
☆26		1	Bedbar ASM
26:2	57-4910	10	Screw
27	61-1950	1	Washer-Bedbar
28	14-4459	1	Housing-Bedbar
28:1	56-9510	1	Bushing ASM
29	62-7120	1	Washer

Ref. No.	Part No.	Qty.	Description
30	3256-56	1	Washer-Flat
31	3253-4	1	Washer-Lock
32	322-3	1	Screw-HH
33	62-5180	1	Bedknife-Lowcut (only on: 03210, 03237)
33	104-1380	1	Bedknife-Highcut
33	105-6785	1	Bedknife-Lowcut (only on: 03239)
34	95-8739-01	1	Machining-Bedbar
35	99-3472	2	Weight-Lead (only on: 03239)
36	321-15	2	Screw-HH (only on: 03239)
37	32146-17	2	Nut-Lock (only on: 03239)
38	3256-74	4	Washer-Flat

☆ Not serviced separately

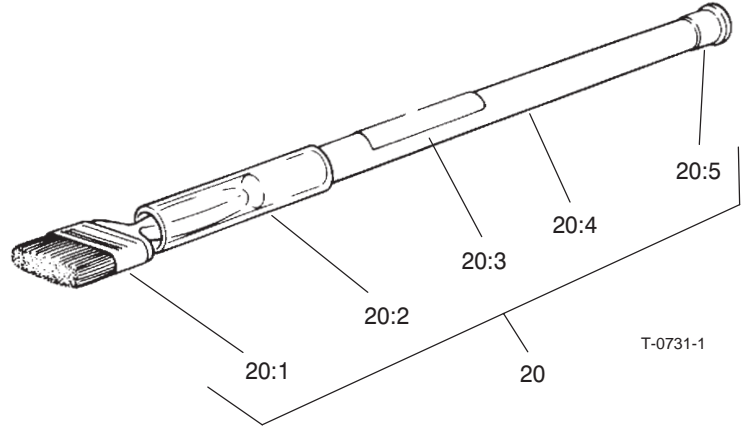
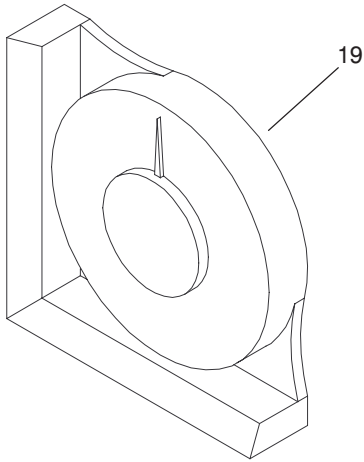
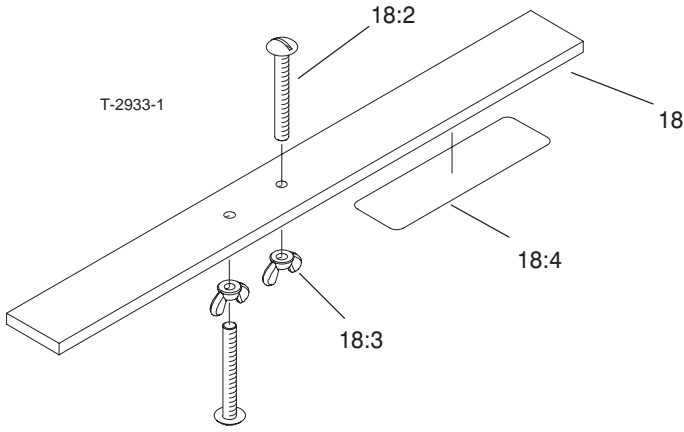


Sheet No.:4

Roller Assembly

Ref. No.	Part No.	Qty.	Description
1	323-57	4	Screw-HH
2	71-3690	4	Spade-Bent
3	61-0420-01	4	Support-HOC
4	3296-39	16	Nut-Lock, NI
5	3290-467	4	Pin-Hair
6	3231-25	4	Screw-CARR
7	14-4489	2	Front HOC Bracket ASM
7:2	56-9510	1	Bushing ASM
8	323-6	8	Screw-HH
9	56-9520	2	Bushing-Flanged
11	61-0910	4	Bracket-Angle
12	61-0410	1	Full Roller ASM
12:1	71-3590	2	Nut-Adjustment
12:2	105-0150	2	Seal-Grease
12:3	254-78	2	Bearing-Cone
12:4	254-79	2	Bearing-Roller, Cup
12:5	253-152	2	Seal-Oil
12:6	105-0156	1	Shaft-Roller
12:7	12-4989-01	1	End Cap & Tube ASM
12:9	302-5	2	Fitting-Grease
13	14-4479	2	Rear HOC Bracket And Bushing ASM
13:1	56-9510	1	Bushing ASM
14	3290-55	8	Rivet-Pop
15	61-3800	2	Plate-Rear

Ref. No.	Part No.	Qty.	Description
16	61-3790	2	Plate-HOC, Front
20	104-1385	1	Wiehle Roller ASM (only on: 03237, 03239)
20:1	71-3590	2	Nut-Adjustment
20:2	105-0156	1	Shaft-Roller
20:3	104-1386-03	1	Roller-Wiehle
20:4	302-5	2	Fitting-Grease
20:5	105-0150	2	Seal-Grease
20:6	254-78	2	Bearing-Cone
20:7	254-79	2	Bearing-Roller, Cup
25	3256-38	2	Washer-Flat



Sheet No.:1

Gauge Bar, Angle Indicator and Handle Assemblies

Ref. No.	Part No.	Qty.	Description
18	98-1852	1	Gauge Bar ASM
18:2	32122-54	2	Screw-Head, Truss
18:3	32103-3	2	Nut-Wing
18:4	98-7976	1	Decal-Bar, Gauge
19	99-3503	1	Indicator-Angle
20	29-9100	1	Brush And Handle ASM
20:1	36-4310	1	Brush
20:2	29-9090	1	Hose-Handle
20:3	12-9140	1	Decal-Body, Front
20:4	29-9080	1	Handle
20:5	2410-18	1	Cap-Plastic

Ref. No.	Part No.	Qty.	Description

