



Form No. 3467-298 Rev A

Count on it.

Parts Catalog

Flex-Force Power System™ **60V MAX Axial Blower**

Model No. 51900T—Serial No. 324000000 and Up



Ordering Replacement Parts

To order replacement parts, please supply the part number, the quantity, and the description of each part desired.

Understanding Reference Numbers

Each identified part in an illustration has a reference number. The reference number for a part also appears in the parts list, along with other information about the part.

This catalog uses two special reference number formats, one to indicate parts in a service assembly and another to indicate the quantity of a given part in an illustration.

Service Assembly Reference Numbers

Parts in service assemblies have reference numbers in the form a:b. The a represents the reference number of the entire service assembly and the b represents a sequential number unique to each part within the service assembly.

For example, a wheel assembly might be identified by reference number 6, the tire by 6:1, the valve by 6:2, and the wheel by 6:3. When you order the assembly identified by reference number 6, you receive all parts identified by reference numbers 6:1, 6:2, and 6:3. However, you may also order any part individually. Reference numbers of this type appear in illustration and in parts lists.

Reference Numbers Indicating Quantity

In an illustration, if a reference number indicates more than one part, the reference number has the form nX y. The n represents the quantity of the part, the X is the multiplication symbol, and the y represents the reference number.

For example, in an illustration, the reference number 2X 37 means that two of the parts identified by reference number 37 are indicated.

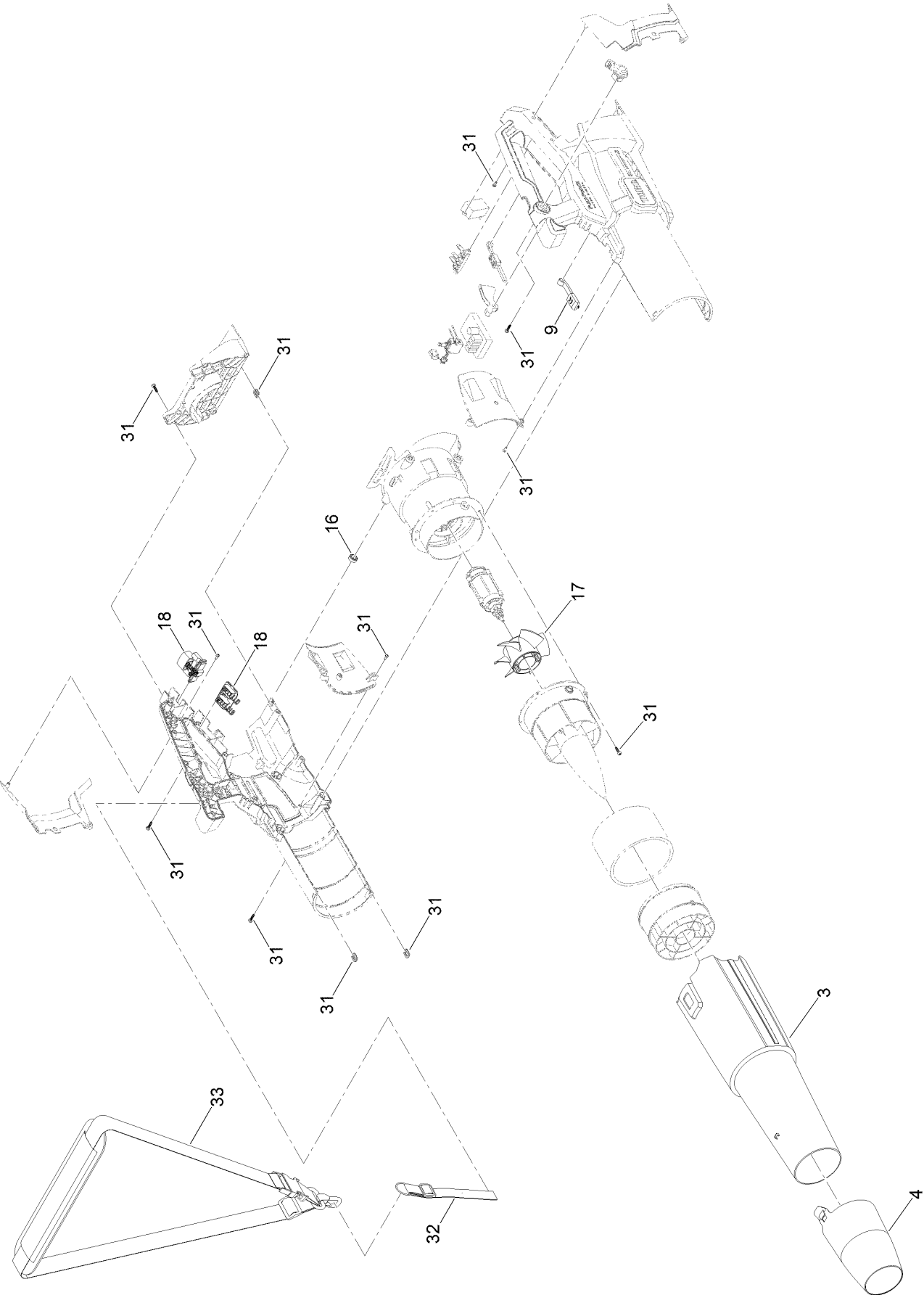
Contents

Flex-Force Power System 60V MAX Leaf Blower Assembly 4

Attachments and Accessories 6

Flex-Force Power System

60V MAX Leaf Blower Assembly



Flex-Force Power System

60V MAX Leaf Blower Assembly (continued)

<i>Ref.</i>	<i>Part Number</i>	<i>Qty.</i>	<i>Description</i>	<i>Ref.</i>	<i>Part Number</i>	<i>Qty.</i>	<i>Description</i>
3	147-6578	1	60V Axial Blower Blow Tube	18	147-6599	1	60V Axial Blower Battery
4	147-6579	1	60V Axial Blower Reducer				Latch
			Nozzle	31	163-2816	1	60V Axial Blower Hardware
9	163-2814	1	Blowtube Release Service				Kit
			Kit	32	163-2818	1	60V Blower Strap
16	163-2815	6	60V Axial Blower Isolator Kit	33	139-5334	1	Shoulder-Strap
17	163-2812	1	60V Blower Fan Service				
			ASM				

Attachments and Accessories

For 51900T Flex-Force Power System 60V MAX Axial Blower

Product Name	Model/Part
Battery Charger, 60V 2.0 Amp CE	86902
Battery Charger, 60V 5.4 Amp CE	86905
Battery Charger, 60V 2-Pod 4A CE.....	86924
Battery Charger, Six Pod 60v 12 Amp CE	66560
Battery-LI-ION, 60V 2.0AH, 108WH	88920
Battery-LI-ION, 60V 2.5AH, 135WH	88925
Battery-LI-ION, 60V 4.0AH, 216WH	88941
Battery-LI-ION, 60V 5.0AH, 270WH	88950
Battery-LI-ION, 60V 6.0AH, 324WH	88960
Battery-LI-ION, 60V 7.5AH, 405WH	88975
Battery-LI-ION, 60V 8.0AH, 432WH	88980
Battery -LI-ION, 60V 10 AH, 540WH.....	66910
Battery -LI-ION, 60V 12 AH, 648WH.....	66912

Notes:



Count on it.