

Jack Kit With Adapter

Zero-Turn-Radius Side-Discharge or Rear-Discharge Riding Mower

Model No. 126-7282

Model No. 127-6666

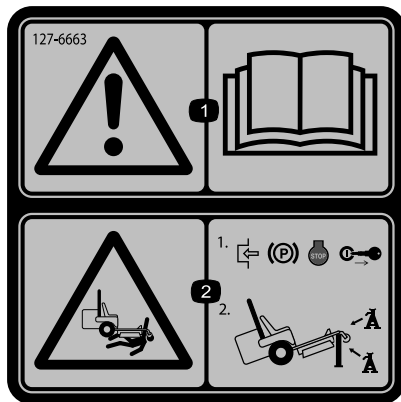
Installation Instructions

Safety

Safety and Instructional Decals



Safety decals and instructions are easily visible to the operator and are located near any area of potential danger. Replace any decal that is damaged or lost.



decal127-6663

127-6663

1. Warning—read the *Operator's Manual*.
2. Crushing hazard—engage the parking brake, shut off the engine, and remove the key; support the machine using jackstands.



Installation

Loose Parts

Use the chart below to verify that all parts have been shipped.

Description	Qty.	Use
Jack	1	Install the optional adapter.
Adapter	1	

Installing the Optional Adapter

You can install and use the adapter to raise and lower the jack with an impact wrench.

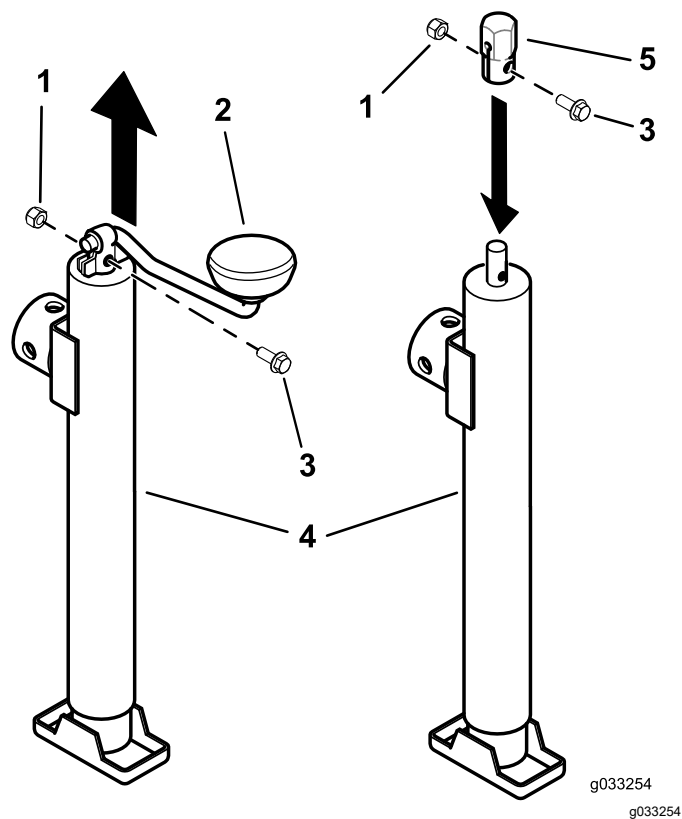


Figure 1

- | | |
|-----------------------|------------------------|
| 1. Existing locknut | 4. Jack |
| 2. Remove the handle. | 5. Install the adapter |
| 3. Existing bolt | |

Operation

Using the Jack

Use the jack to raise the front end of the mower to allow you to clean under the mower deck or change the blades.

⚠ WARNING

The machine could fall onto someone and cause serious injury or death.

- Read and understand the *Operator's Manual* before performing maintenance.
- Always shut off the engine, engage the parking brake, and remove the key before performing maintenance on the machine.
- Do not keep the machine raised on the jack for extended periods of time.
- Always use a jack on a level surface.
- Ensure that the jack is secured properly to the jack mount using a jack pin.
- Do not rely solely on the jack for support. Use adequate jack stands or equivalent support.
- Do not mount or dismount the mower while the jack is raised.
- Before each use, ensure that the jack and jack mount work properly and that there are no signs of damage.

Note: Only use (an) approved jack(s) rated at 907 kg (2,000 lb) or higher lift capacity with the jack mount.

1. Disengage the blade control switch (PTO), move the motion-control levers to the NEUTRAL-LOCK position, and engage the parking brake.
2. Shut off the engine, remove the key, and wait for all moving parts to stop before leaving the operating position.
3. Close the fuel-shutoff valve (if applicable).
4. Raise the mower deck to the transport position.
5. Insert the jack tube onto the jack mount, align the mounting holes, and secure the jack with the jack pin (Figure 2).
6. Rotate the handle or adapter on the jack to raise the mower until the jack is at the desired height. Do not over-extend the jack.

⚠ WARNING

Raising the machine could cause a fuel leak.

- Check for any fuel leaks before performing maintenance.
- If you see a fuel leak, immediately lower the machine and do not attempt to start the engine. Avoid creating a source of ignition until the fuel vapors have dissipated.

7. Lower the mower onto jack stands or an equivalent support.
8. Perform the maintenance.
9. When the maintenance is completed, remove the jack stands or equivalent support.
10. Rotate the handle or adapter on the jack to lower the mower.
11. Remove and store the jack (Figure 2).

Note: The mower is not designed to store the jack when it is not being used. Do not drive the mower with the jack installed.

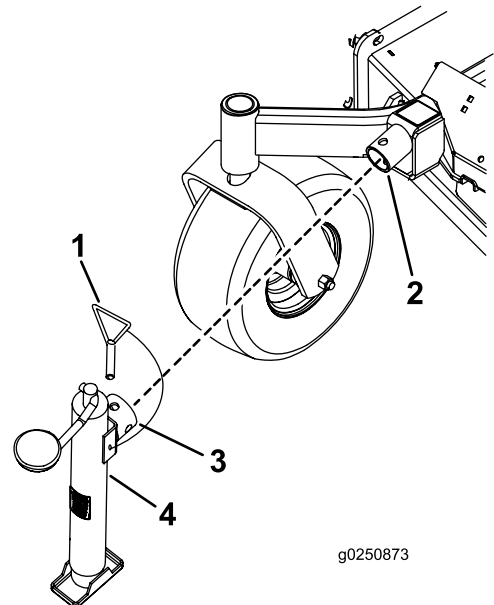


Figure 2

- | | |
|--------------------|--------------|
| 1. Jack pin | 3. Jack tube |
| 2. Jack-mount tube | 4. Jack |

12. Open the fuel-shutoff valve (if applicable).

Notes: