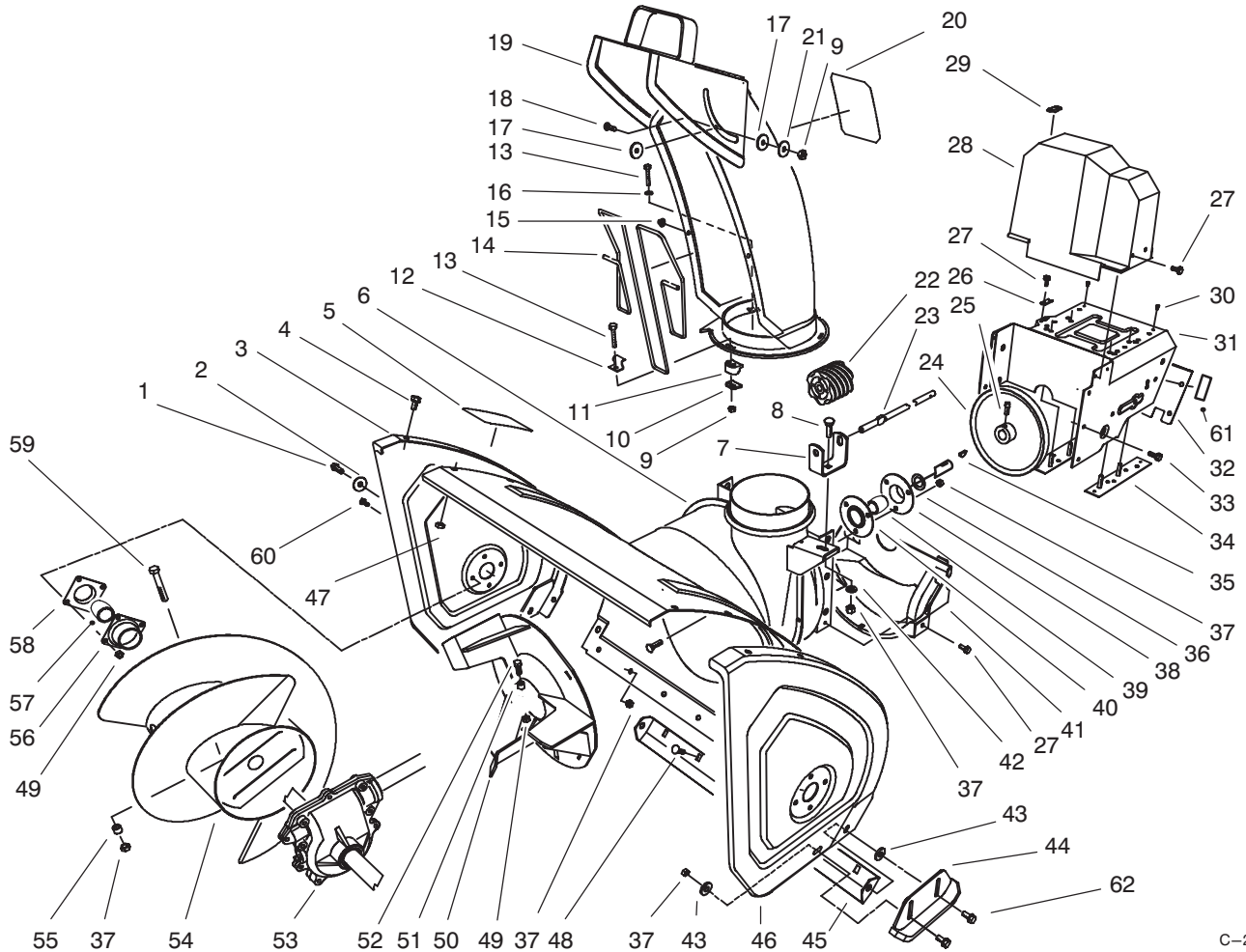




MODEL NO. 38590-8900001 & UP
 MODEL NO. 38591-8900001 & UP

PARTS
 CATALOG

**1232 POWER SHIFT®
 SNOWTHROWER**



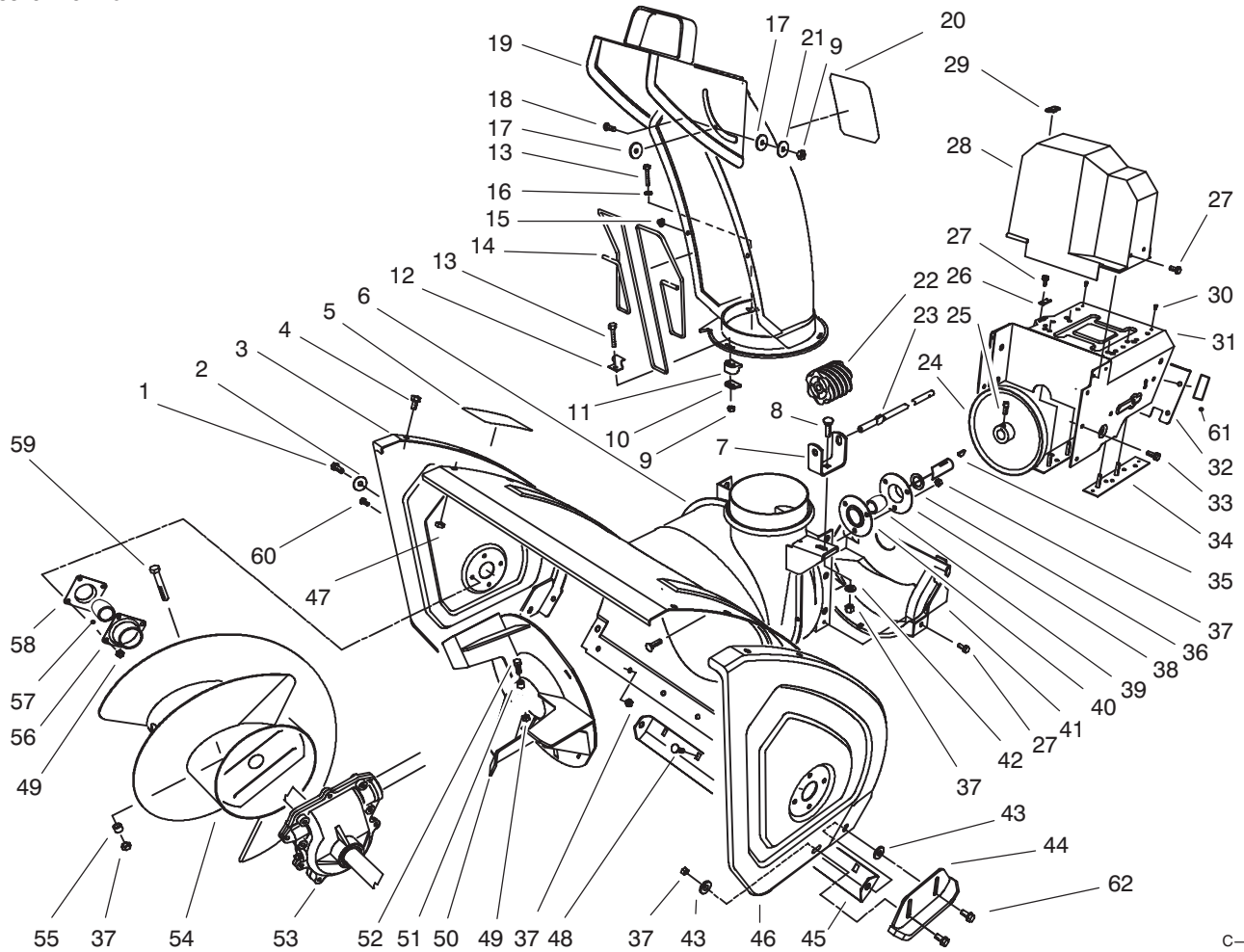
C-2584

HOUSING ASSEMBLY

Ref. No.	Part No.	Description	No. Used
1	323-4	Screw - Hex Hd.	2
2	3-0750	Washer - Retaining	2
3	66-7821	Plate - Side R.H.	1
4	3234-28	Screw - Hex Flange Hd.	12
5	53-7670	Decal - Warning Auger (Model 38590 Only)	1
*	94-2568	Decal - Warning Auger (Model 38591 Only)	1
6	62-0722	Housing - 32"	1
7	63-2180	Bracket - Gear	1
8	3230-2	Bolt - Carriage	1
9	3296-2	Nut - Lock	4
10	63-2670	Plate - Chute Retainer	3
11	62-1430	Retainer - Chute	3
12	63-3130	Clip - Chute Guard	1
13	3274-13	Screw - Machine	3
14	63-3020	Guard - Chute	1

Ref. No.	Part No.	Description	No. Used
15	3290-326	Nut - Push	2
16	3256-14	Washer - Flat	1
17	63-2900	Washer - Plastic	2
18	32122-32	Screw	1
19	62-0840	Chute Assembly	1
20	94-8079	Decal - Danger Chute (Model 38590 Only)	1
*	94-2559	Decal - Danger Chute (Model 38591 Only)	1
21	3256-61	Washer - Flat	1
22	62-0820	Gear - Worm	1
23	62-1720	Rod - Chute Gear	1
24	62-1300	Pulley - Impeller	1
25	3242-4	Screw - Set Sq. Hd.	2
26	63-2300	Retainer - Cable	1
27	32144-4	Screw - Hex Flange Hd.	6

*Not Illustrated



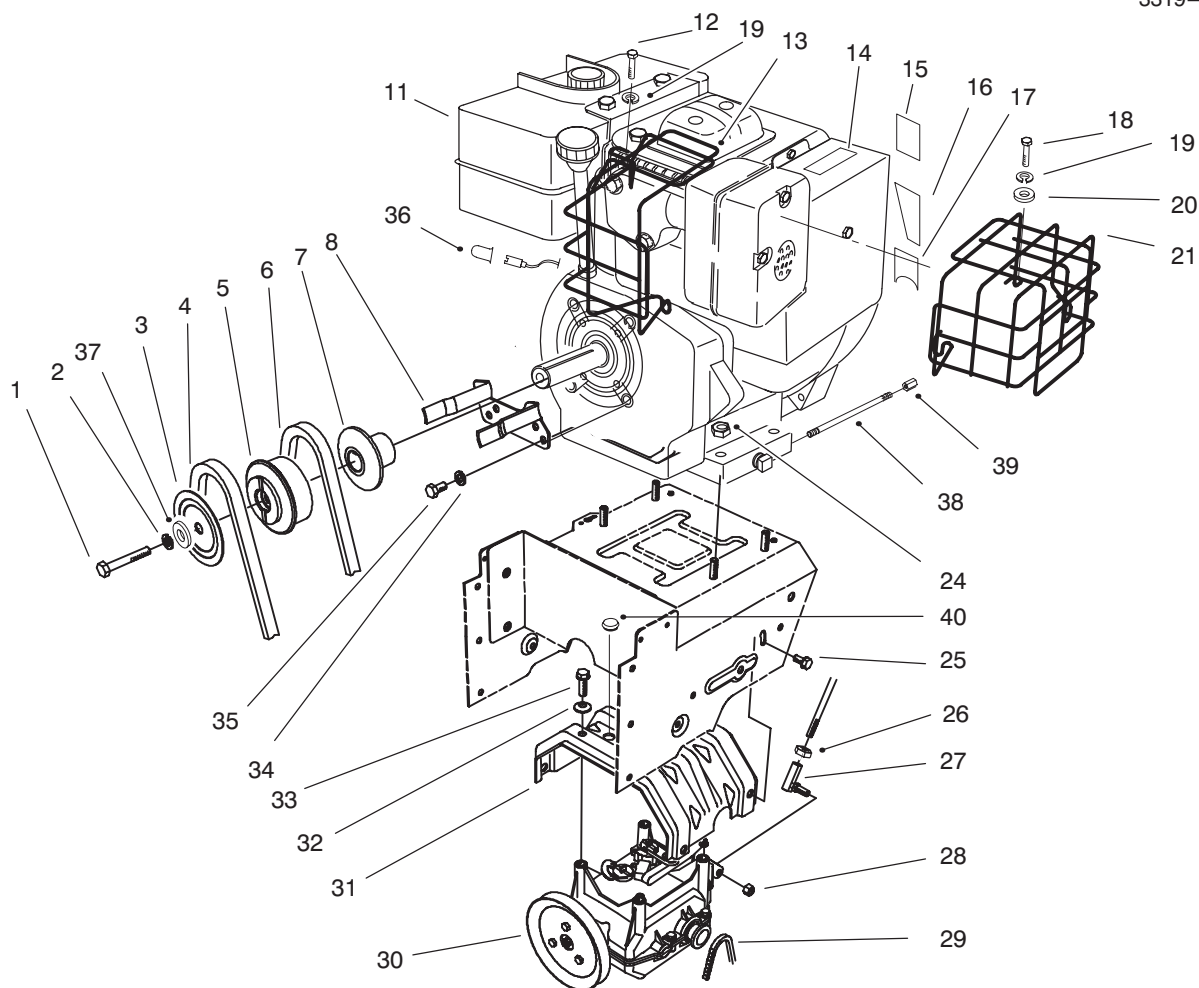
C-2584

HOUSING ASSEMBLY (Continued)

Ref. No.	Part No.	Description	No. Used
28	63-2080	Cover - Belt (Upper)	1
29	63-3290	Cover - Cable	10
30	3269-23	Rivet	4
31	66-6980	Frame - Engine	1
32	62-1440	Cover - Engine Frame	1
33	32144-14	Screw	6
34	66-4110	Plate - L.H.	1
*	66-4100	Plate - R.H.	1
35	3257-23	Key - Woodruff	1
36	252-80	Washer - Thrust	1
37	3296-29	Nut - Lock	16
38	26-6120	Flange - Bearing (Rear)	1
39	63-3450	Bearing - Impeller	1
40	26-6110	Flange - Bearing (Front)	1
41	68-8410	Cover - Belt (Lower)	1
42	3256-23	Washer - Flat	1
43	52-2861	Washer	4
44	74-1440	Skid Assembly	2
45	66-7760	Blade - Scraper	1
46	66-7831	Plate - Side L.H.	1

Ref. No.	Part No.	Description	No. Used
47	3296-47	Nut - Lock	12
48	3230-23	Screw - Carriage	11
49	3296-42	Nut - Lock	10
50	66-7920	Impeller	1
51	66-8010	Spacer	2
52	321-44	Screw - Hex. Hd.	2
53	74-1562	Auger Gearbox Assembly	1
54	68-7452	Auger - R.H.	1
*	68-7462	Auger - L.H.	1
55	25-5090	Spacer - Auger Hub	2
56	20-0990	Flange - Bearing (Inner)	2
57	20-0980	Bearing - Auger	2
58	20-1000	Flange - Bearing (Outer)	2
59	322-12	Bolt - Auger	2
60	321-3	Screw - Hex Hd.	8
61	68-9390	Decal - Differential (Model 38590 Only)	1
62	3234-5	Screw - Hex Washer Hd.	4
*	12-8789	Impeller Bearing Assembly (Incl. Ref. #38-40)	1

*Not Illustrated



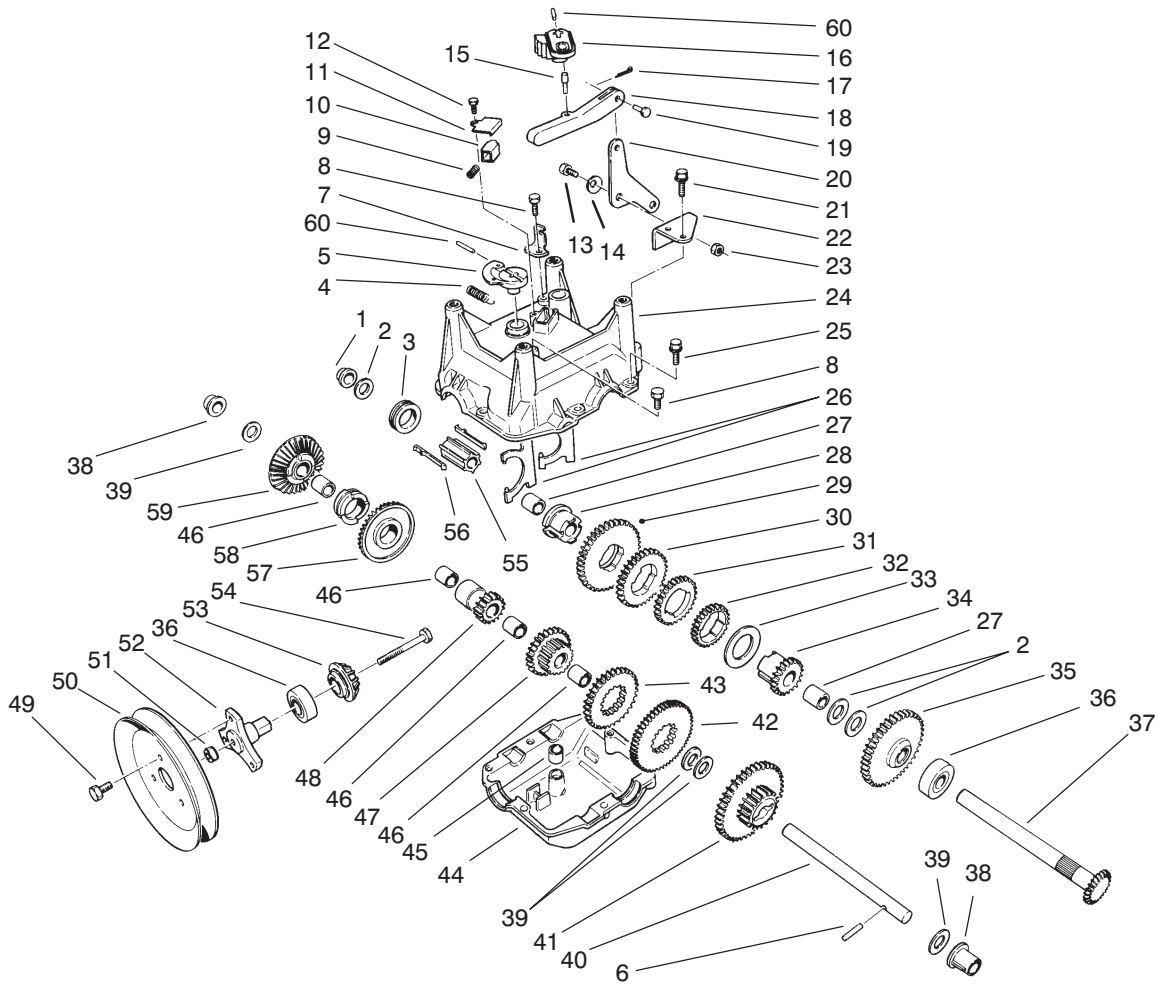
C-2585

ENGINE, TRANSMISSION DRIVE ASSEMBLY

Ref. No.	Part No.	Description	No. Used	Ref. No.	Part No.	Description	No. Used
1	3212-8	Screw - Hex. Hd.	1	†18	42-671	Screw/Washer, Model 38591	5
2	3253-6	Washer - Lock	1	†19	36-180	Washer - Lock, Model 38591	5
3	62-0940	Sheave Half - Impeller	1	†20	32-251-1	Washer - Flat, Model 38591	5
4	63-2967	Belt - Impeller	1	†21	127-24	Guard-Muffler, Model 38591	1
5	62-0930	Hub - Sheave	1	24	32128-20	Nut - Lock	4
6	63-2955	Belt - Traction	1	25	3234-7	Screw - Hex Flange Hd.	4
7	62-0920	Sheave Half - Traction	1	26	3220-3	Nut - Lock	1
8	68-7510	Guide - Belt	1	27	78-2920	Joint- Ball	1
†11		Engine - Tecumseh Model OHS120-223604A (Model 38591 Only)	1	28	3296-6	Nut - Lock	1
†11		Engine - Tecumseh Model OHS120-223605A (Model 38590 Only)	1	29	63-2930	Chain - Drive	1
†12	42-657	Screw / Washer, Model 38591	1	30	66-8030	Transmission Assembly	1
†13	127-21	Guard-Muffler, Model 38591	1	31	63-2990	Frame - Transmission	1
14	66-6840	Decal - Hot, Model 38590	1	32	3290-461	Washer - Belleville	4
*	93-1265	Decal - Hot, Model 38591	1	33	11-0590	Screw - Hex Hd.	4
15	94-2572	Decal - Primer	1	34	3253-4	Washer - Lock	2
16	63-2450	Decal - Throttle	1	35	3210-1	Screw - Hex Hd.	2
17	63-2410	Decal - Choke	1	36	94-2782	Cap - Wire, Model 38590	1
				37	3256-41	Washer	1
				38	289-34	Nipple - Pipe	1
				39	288 - 2	Cap - Pipe	1
				40	95-7947	Cap Plug	2

*Not Illustrated

† Obtain From Tecumseh

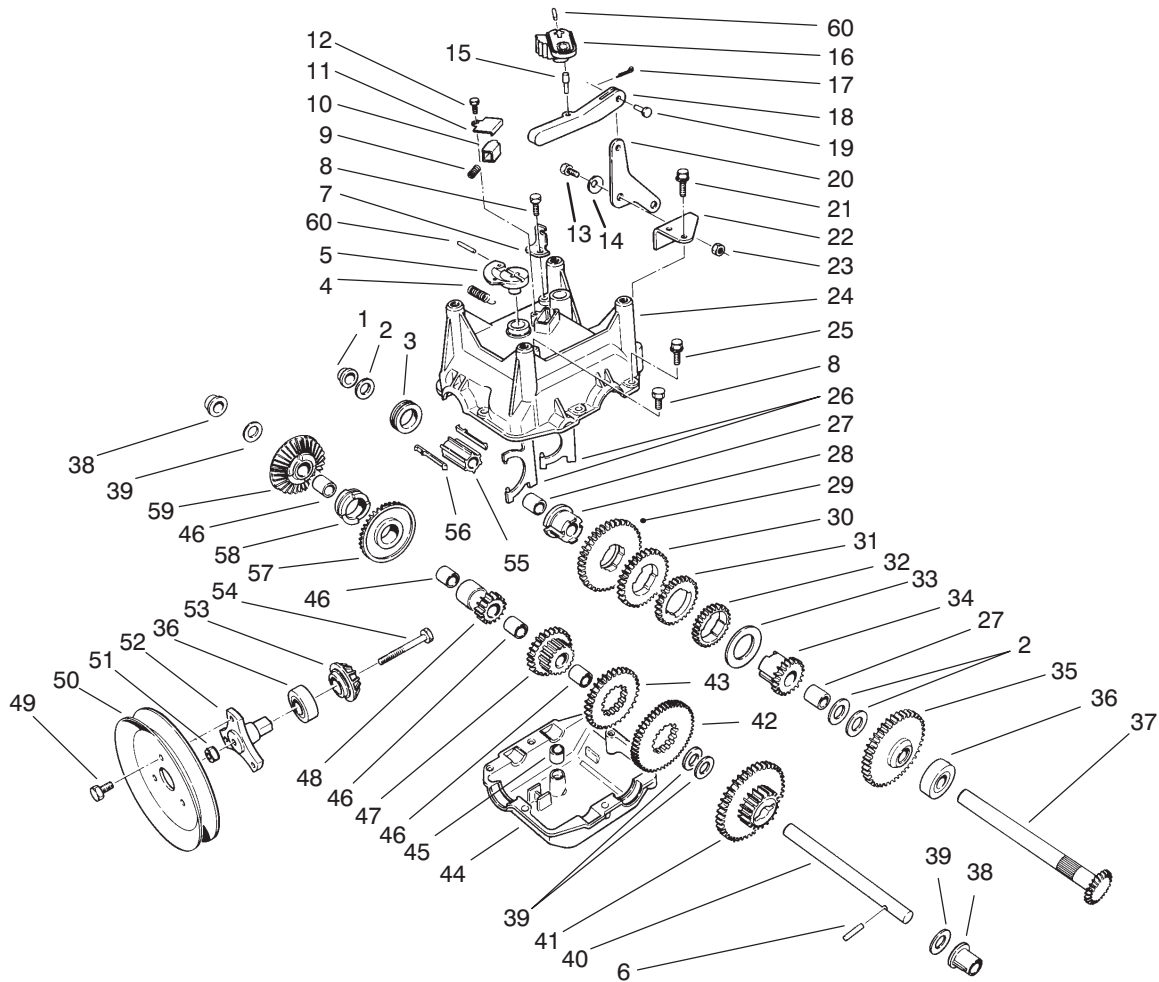


C-0052

TRANSMISSION ASSEMBLY NO. 66-8030

Ref. No.	Part No.	Description	No. Used
1	62-1180	Bushing - Output (Flange)	1
2	252-59	Washer - Thrust	3
3	62-0430	Collar - Shift (Speed)	1
4	63-2920	Spring - Extension	1
5	62-0880	Lever - Direction Shift	1
6	32121-106	Pin - Coil	1
7	62-1740	Bracket - Cable	1
8	32144-4	Screw - Self Tapping	2
9	63-2890	Spring - Compression (Detent)	1
10	62-1020	Button - Detent	1
11	62-1690	Cover - Detent	1
12	32104-71	Screw - Pan Hd.	1
13	63-3410	Bolt - Shoulder	1
14	3290-477	Washer - Curved	1
15	63-2190	Pin - Gearshift Link	1
16	62-0870	Lever - Gear Shift	1
17	3272-1	Pin - Cotter	1
18	62-0860	Link - Gearshift	1

Ref. No.	Part No.	Description	No. Used
19	283-3	Pin - Clevis	1
20	63-2600	Bellcrank	1
21	32104-95	Screw - Hex Washer Hd.	2
22	62-1190	Bracket - Bellcrank	1
23	3296-42	Nut - Lock	1
24	62-0490	Gear Case - Upper	1
25	32144-86	Screw - Hex Washer Hd.	6
26	62-1040	Yoke-Shift	2
27	62-1350	Bushing - Output	2
28	62-0320	Sleeve	1
29	62-0240	Gear - 45T	1
30	62-0220	Gear - 34T	1
31	62-0200	Gear - 27T	1
32	62-0250	Gear - 29T	1
33	63-2280	Washer - Thrust	1
34	62-0340	Sleeve - Gear 19T	1
35	62-0370	Gear - 41T	1
36	38-7820	Bearing - Ball	2



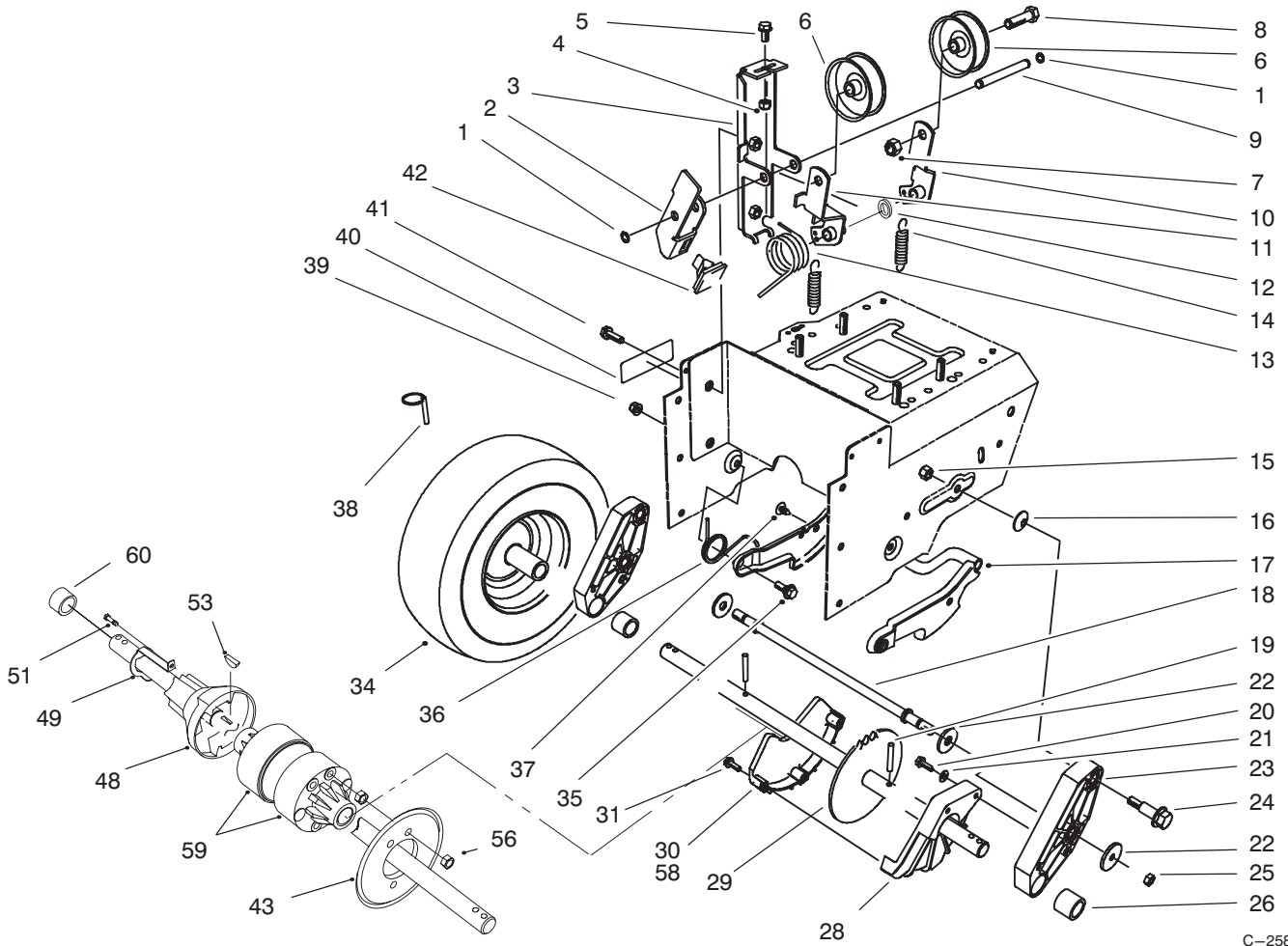
C-0052

TRANSMISSION ASSEMBLY NO. 66-8030 (Continued)

Ref. No.	Part No.	Description	No. Used
37	62-1080	Shaft - Output	1
38	62-1170	Bushing - Flange	2
39	257-10	Washer - Thrust	4
40	62-0330	Shaft - Intermediate	1
41	62-0360	Gear - Compound 19T/41T	1
42	62-0260	Gear - 51T	1
43	62-0210	Gear - 33T	1
44	62-0480	Gear Case - Lower	1
45	29-9570	Bushing - Yoke	1
46	62-1160	Bushing - Intermediate	4
47	68-4310	Gear - 26T	1
48	62-0500	Gear - 15T	1
49	12-3270	Screw	3

Ref. No.	Part No.	Description	No. Used
50	62-1310	Pulley - Traction	1
51	32128-32	Nut - Flange Lock	1
52	62-0380	Hub - Pulley	1
53	62-0350	Pinion - Bevel 19T	1
54	321-15	Screw - Cap Hex Hd.	1
55	68-4320	Sleeve - Shift	1
56	62-0310	Key - Shift	2
57	67-5870	Gear - Bevel 36T	1
58	67-5880	Collar - Shift	1
59	13-3559	Gear - Bevel Reverse 36T (Incl. Ref. #46)	1
60	32121-120	Pin - Coil	2

*Not Illustrated

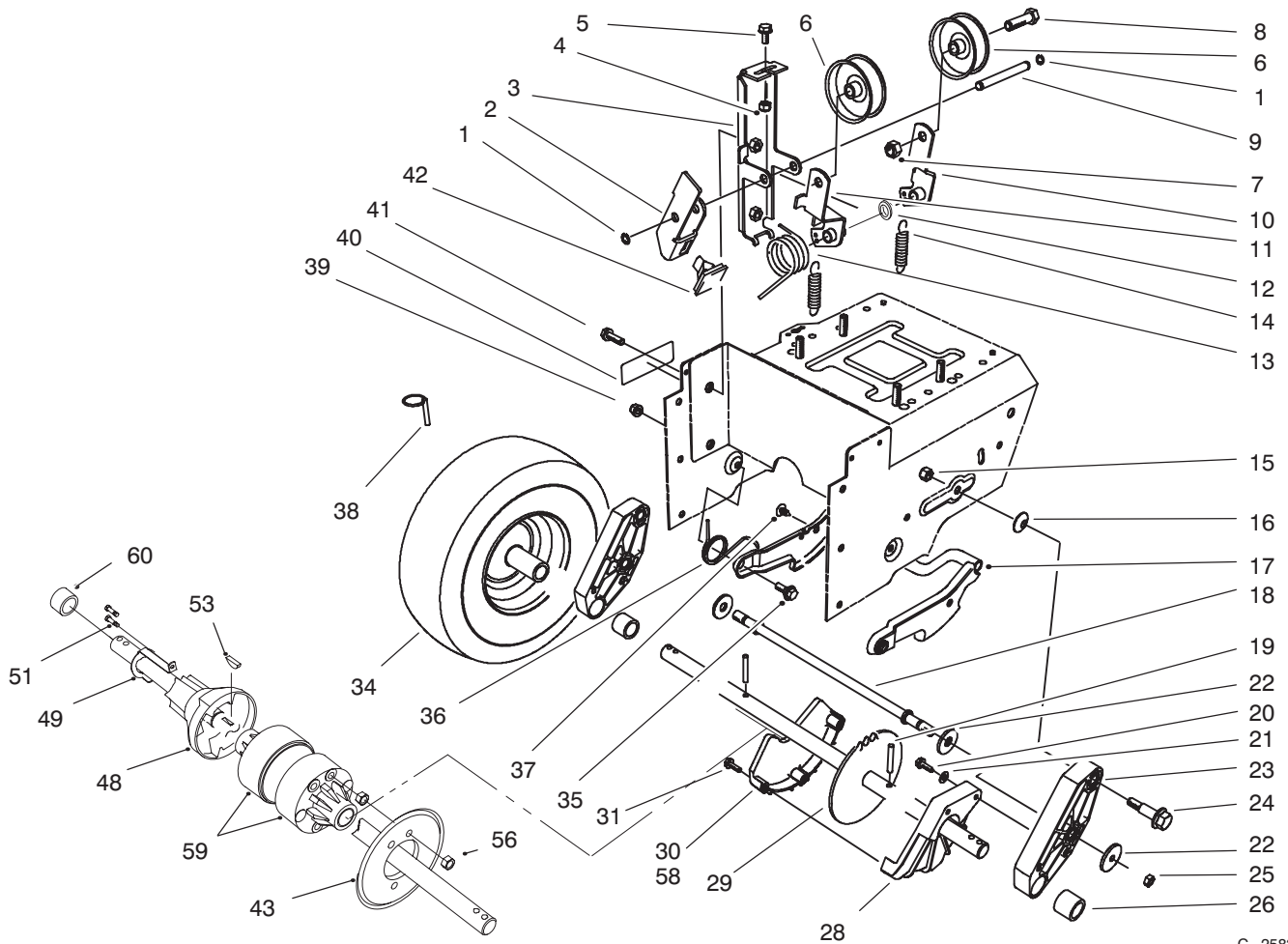


C-2583

TRANSMISSION DRIVE ASSEMBLY

Ref. No.	Part No.	Description	No. Used
1	32120-46	Ring - Retaining	2
2	63-2820	Arm - Brake	1
3	63-2850	Bracket - Idler Arm	1
4	3296-42	Nut - Lock	1
5	3234-13	Screw - Hex. Hd.	1
6	3-4244	Pulley - Idler	2
7	3296-59	Nut - Lock	2
8	323-7	Screw - Hex Hd.	2
9	62-0970	Pin - Idler	1
10	93-8045	Arm - Traction Idler	1
11	93-8046	Arm - Impeller Idler	1
12	3256-38	Washer - Flat	1
13	63-2881	Spring - Torsion	1
14	63-2870	Spring - Extension	2
15	3296-39	Nut - Lock	2
16	3290-461	Washer - Belleville	2
17	62-0470	Latch - Arm	1
18	66-7720	Rod - Latch	1
19	32121-9	Pin - Roll	2

Ref. No.	Part No.	Description	No. Used
20	32144-4	Screw - Hex Flange Hd.	2
21	3256-1	Washer - Flat	2
22	63-3340	Washer	4
23	66-7740	Pivot Arm Assembly (Incl. Ref. # 26)	2
24	62-1330	Bolt - Shoulder	2
25	3296-23	Nut - Lock	2
26	63-2250	Bushing - Axle	2
28	62-1010	Guard - Chain L.H.	1
29	63-2112	Axle Assembly (Model 38591 Only)	1
30	62-1000	Guard - Chain R.H. (Model 38591 Only)	1
31	94-4496	Screw - Hex Flange Hd.	3
34	67-9230	Tire & Wheel Assembly	2
35	5-2490	Bolt - Shoulder	2
36	63-2740	Spring - Torsion	1
37	3290-476	Fastener - Panel	1
38	3290-243	Pin - Klik	2



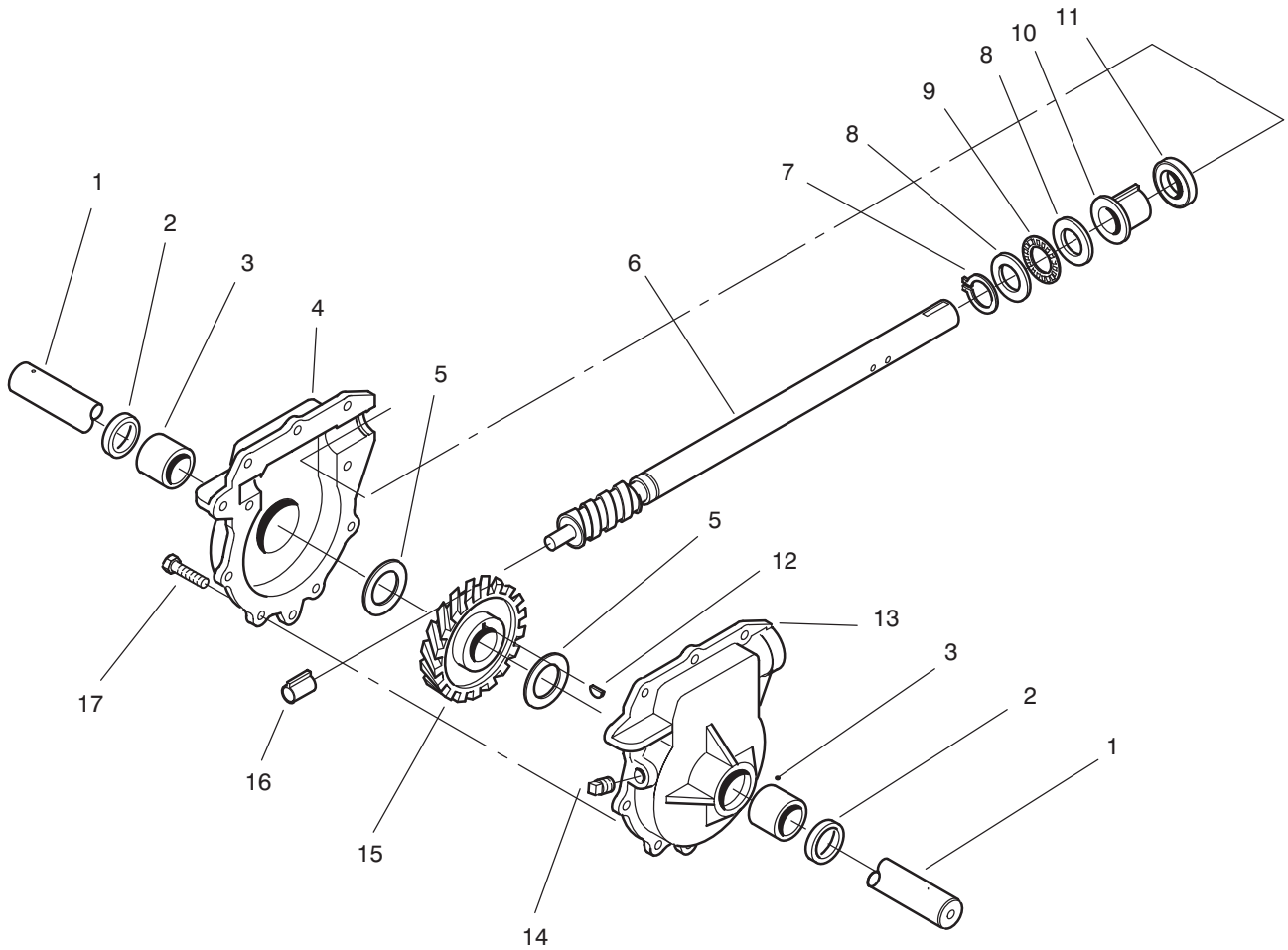
C-2583

TRANSMISSION DRIVE ASSEMBLY (Continued)

Ref. No.	Part No.	Description	No. Used
39	3296-47	Nut - Lock	2
40	66-6860	Decal - Warning (Model No. 38590 Only)	1
*	94-2575	Decal - Warning (Model No. 38591 Only)	1
41	3234-7	Screw - Hex Flange Hd.	2
42	66-8060	Pad - Brake	1
43	68-9270	Sprocket (32T) (Model 38590 Only)	1
44	68-9200	Housing - L.H. (Model 38590 Only)	1
48	68-9250	Coupling - Differential (Model 38590 Only)	1
49	68-9260	Spring - Lockout (Model 38590 Only)	1

Ref. No.	Part No.	Description	No. Used
51	32144-73	Screw - Hex. Washer Hd. (Model 38590 Only).	1
53	3257-41	Key - Woodruff (Model 38590 Only)	2
56	3296-47	Nut (Model 38590 Only)	6
58	68-9310	Guard - Chain R.H. (Model 38590 Only)	1
59	68-9200	Differential Asm (Incl. Ref. #44-57) (Model 38590 Only)	1
60	95-7930	Spacer (Model 38590 Only)	1

*Not Illustrated



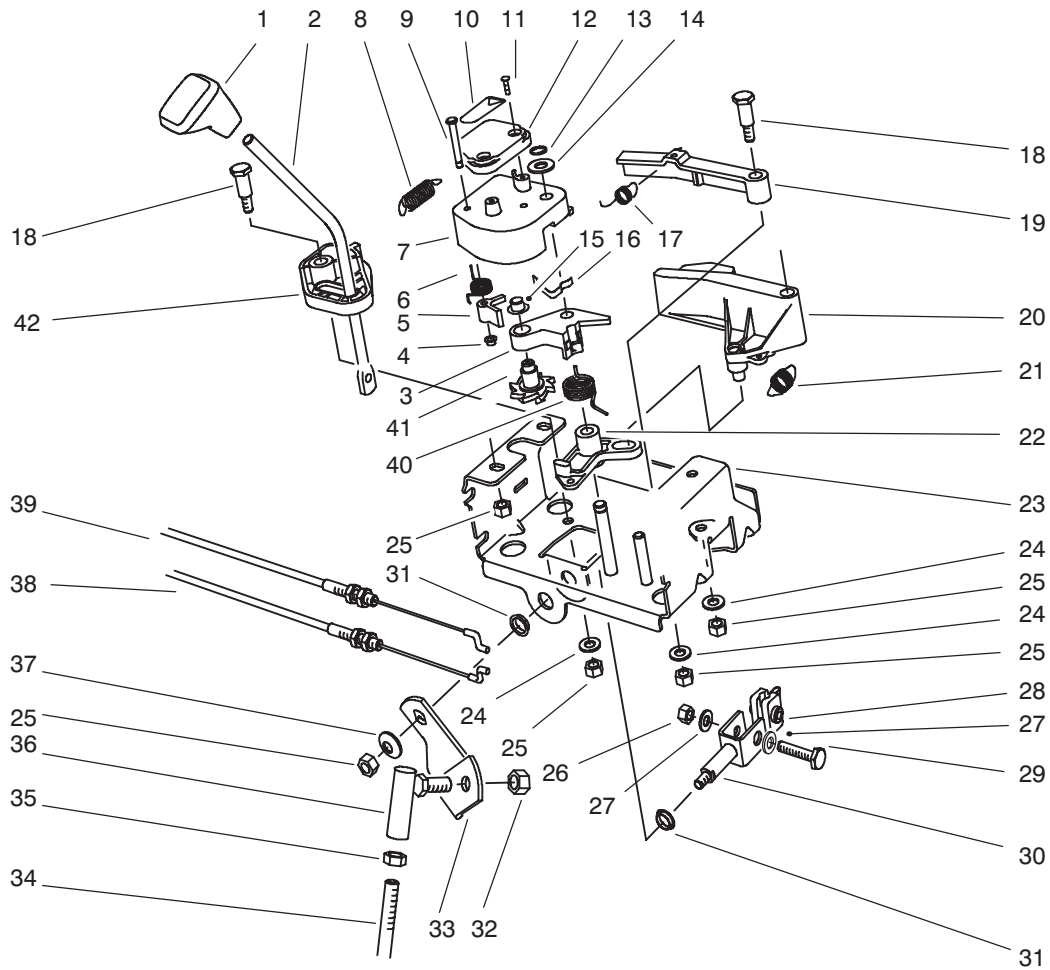
C-1015

32" AUGER GEARCASE ASSEMBLY NO. 74-1562

Ref. No.	Part No.	Description	No. Used
1	62-1532	Shaft - Auger (32")	1
2	7-0045	Seal - Oil	2
3	256-237	Bushing - Sleeve	2
4	74-1550	Gearcase Assembly - R.H. (Incl. Ref. # 2-3)	1
5	252-71	Bearing - Thrust	2
6	66-7811	Shaft - Impeller	1
7	32151-33	Ring - Snap	1
8	252-78	Washer - Thrust	2
9	252-76	Bearing - Thrust	1

Ref. No.	Part No.	Description	No. Used
10	37-6560	Bushing - Input	1
11	253-149	Seal - Input	1
12	3257-10	Key - Woodruff	1
13	74-1540	Gearcase Assembly - L.H. (Incl. Ref. # 2-3)	1
14	281-1	Plug - Pipe Sq. Hd.	1
15	62-0120	Gear - Helical	1
16	62-1150	Bushing - Worm	1
17	32144-110	Screw - Hex Washer Hd.	9

*Not Illustrated

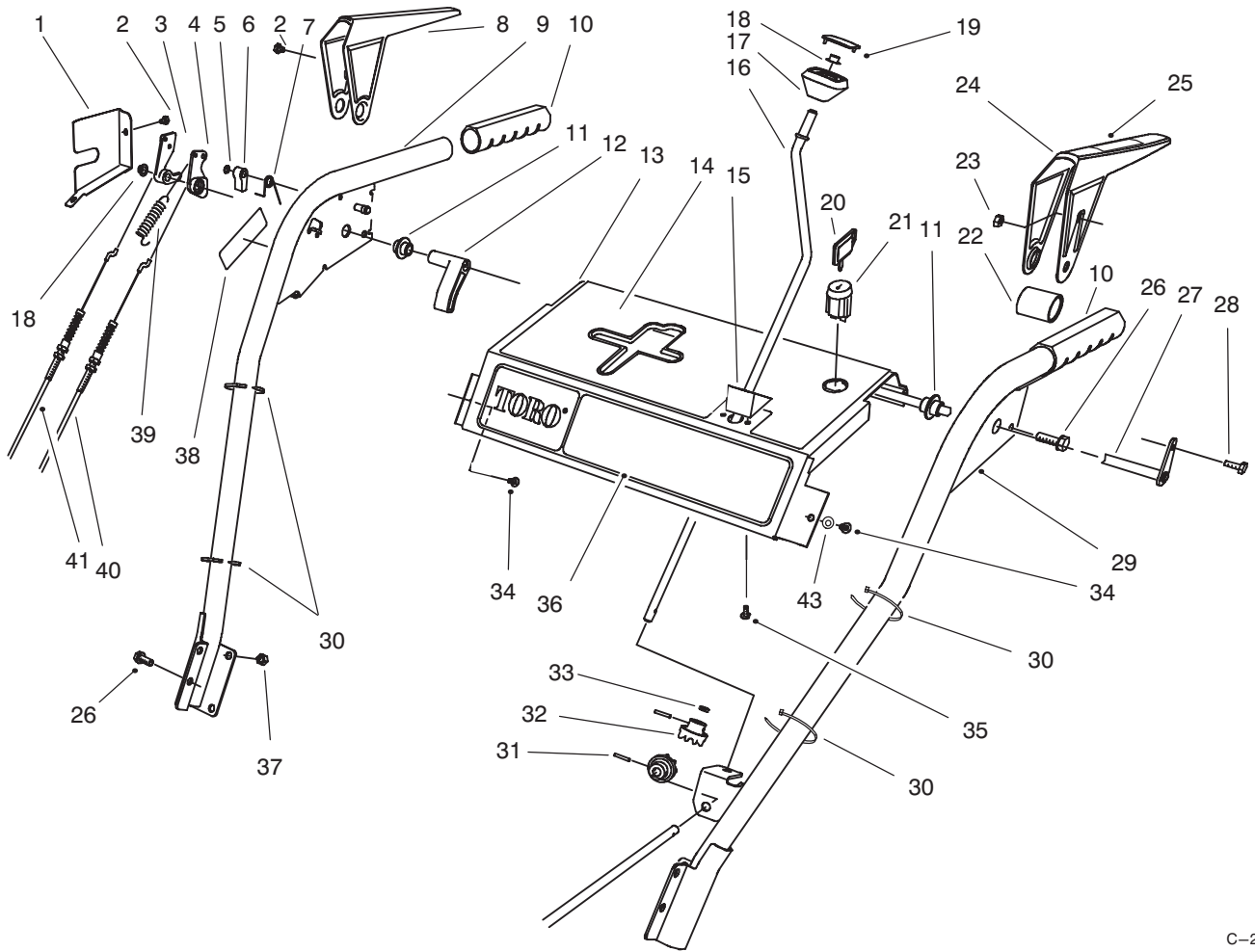


C-0054

TRACTION LINKAGE ASSEMBLY

Ref. No.	Part No.	Description	No. Used
1	62-1290	Knob - Shift	1
2	67-9240	Rod - Shift (Upper)	1
3	62-1110	Lever - Index Wheel	1
4	3290-422	Nut - Push	1
5	62-0180	Tang - Index	1
6	62-1650	Spring - Torsion	1
7	62-1100	Lever - Latch	1
8	63-2220	Spring - Extension	1
9	63-2610	Pin - Tang	1
10	63-2480	Decal	1
11	94-6961	Screw - Pan Hd.	2
12	62-1140	Cover - Latch	1
13	32120-46	Ring - Retaining	1
14	257-9	Washer - Thrust	1
15	3290-320	Nut - Push	1
16	62-1710	Spring - Flat	1
17	63-2240	Spring - Extension	1
18	63-2650	Screw - Shoulder	2
19	62-1700	Lever - Lockout	1
20	62-1130	Lever - Reverse	1
21	63-2230	Spring - Extension	1

Ref. No.	Part No.	Description	No. Used
22	62-1120	Lever - Reverse	1
23	63-2150	Frame - Control	1
24	3256-23	Washer - Flat	3
25	3296-29	Nut - Lock	7
26	3296-42	Nut - Lock	1
27	3256-1	Washer - Flat	2
28	67-9250	Retainer - Shift Rod	1
29	321-9	Screw - Cap Hex. Hd.	1
30	66-7730	Clevis	1
31	256-296	Bushing - Nyliner	2
32	3296-6	Nut - Lock	1
33	63-2630	Bracket - Shift	1
34	63-2830	Rod - Shift (Lower)	1
35	3220-3	Nut - Jam	1
36	78-2920	Joint - Ball	1
37	3290-456	Washer - Belleville	1
38	63-2210	Cable - Gearbox	1
39	63-2200	Cable - Latch	1
40	63-2270	Spring - Torsion	1
41	62-0170	Wheel - Index	1
42	62-1470	Base - Lockout	1

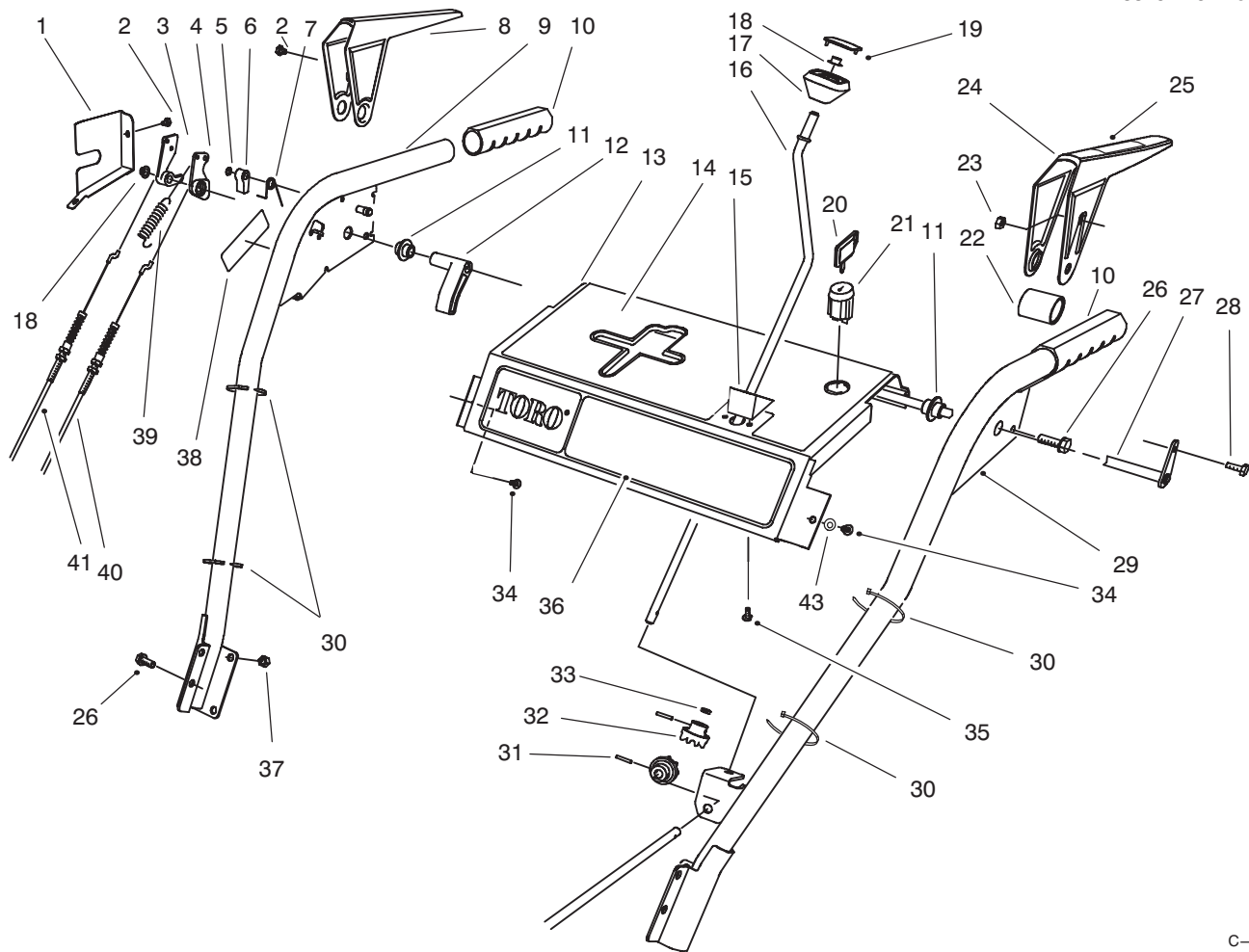


HANDLE ASSEMBLY

Ref. No.	Part No.	Description	No. Used
1	63-2170	Cover - Lever Lock	1
2	2210-250	Screw	3
3	62-0300	Tang - Locking	1
4	62-0290	Cam - Release	1
5	32151-66	Ring - Retaining	1
6	62-0280	Latch - Lock	1
7	63-2910	Spring - Torsion	1
8	62-1050	Lever - Impeller	1
9	62-1381	Handle - R.H.	1
10	66-7850	Handlegrip	2
11	62-1070	Bushing - Lever	2
12	62-1640	Lever - Trip	1
13	66-8100	Panel - Control	1
14	66-6850	Decal - Panel Top (Model 38590 Only)	1
*	94-2578	Decal - Panel Top (Model 38591 Only)	1
15	62-1490	Plate - Guide	1
16	63-2160	Rod - Chute Crank	1
17	62-1320	Knob - Chute Control	1

Ref. No.	Part No.	Description	No. Used
18	3290-320	Nut - Push	2
19	62-1520	Cover - Knob	1
20	63-8360	Key - Switch	1
21	40-5940	Switch - On/Off	1
22	63-3380	Spacer - Traction Lever	1
23	3296-2	Nut - Lock	1
24	62-1060	Lever - Traction	1
25	63-3050	Decal - Lever (Model 38590 Only)	1
26	32144-14	Screw - Hex Flange Hd.	6
27	63-2030	Rod - Cross	1
28	3290-359	Screw	1
29	66-8091	Handle - L.H.	1
30	3290-378	Tie - Cable	4
31	32121-50	Pin - Roll	2
32	62-1460	Gear - Universal	2
33	62-1230	Washer - Rubber	1
34	32104-76	Screw - Self Tapping	2
35	94-6961	Screw - Pan Hd.	2
36	93-8029	Decal - Panel Front	1

*Not Illustrated



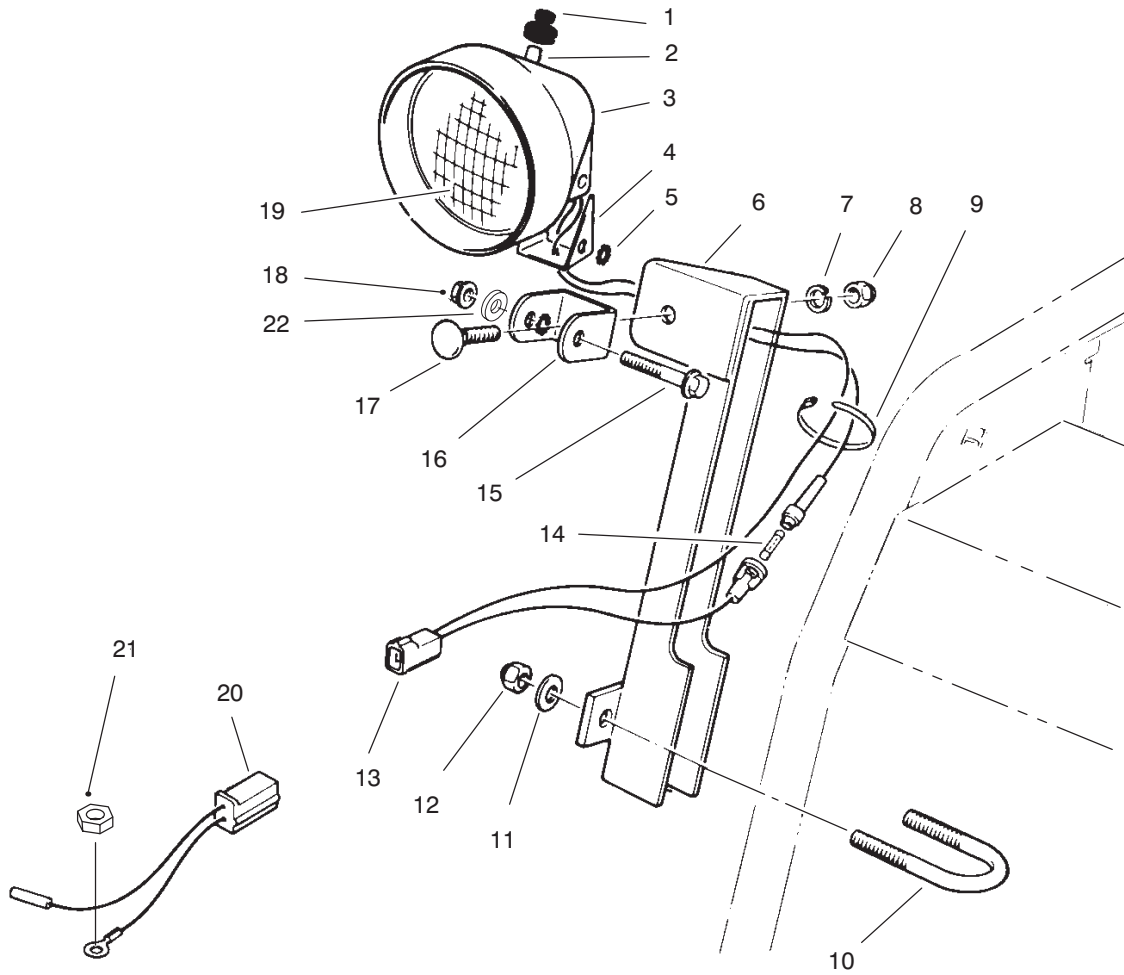
C-2582

HANDLE ASSEMBLY (Continued)

Ref. No.	Part No.	Description	No. Used
37	3296-47	Nut – Lock	4
38	66-6860	Decal – Warning (Model 38590 Only)	1
*	94-2575	Decal – Warning (Model 38591 Only)	1
39	88-0810	Spring – Extension	1
40	63-2710	Cable – Traction	1
41	63-2700	Cable – Impeller	1
43	3256-14	Washer – Flat	2

Ref. No.	Part No.	Description	No. Used
*	54-9810	Assembly – Wire	1
*	66-6900	Assembly – Wire, Adapter (Model 38591 only)	1
*	63-3420	Harness – Wire	1
*	17-4279	Loose Parts Kit (Model 38590 Only)	1
*	17-4289	Loose Parts kit (Model 38591 Only)	1

*Not Illustrated



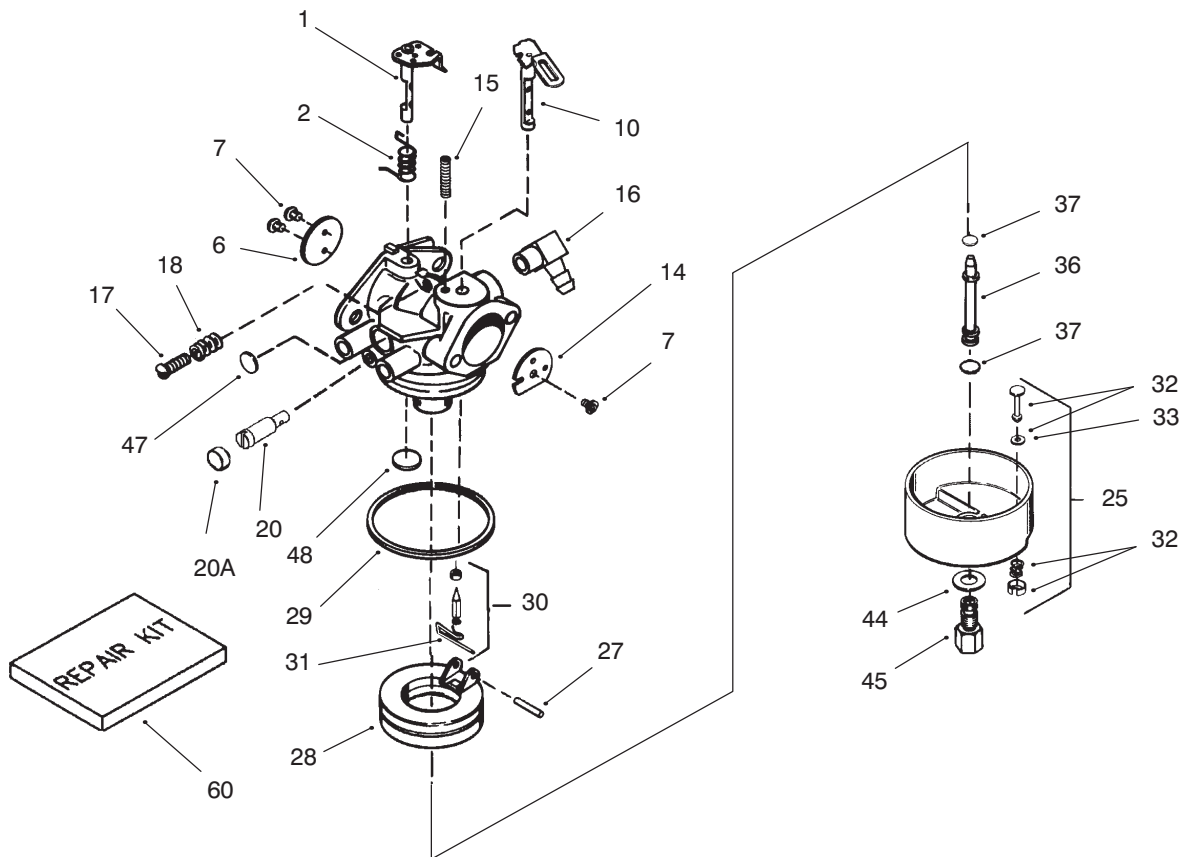
C-0071

LIGHT ASSEMBLY NO. 66-7941

Ref. No.	Part No.	Description	No. Used
1	92-6033	Boot - Switch	1
2	218-553	Switch Assembly	1
3	218-552	Bucket - Headlamp	1
4	218-554	Bracket	1
5	3255-8	Washer - Lock	2
6	68-7110	Mount - Lamp (Model 38591 Only)	1
7	3253-21	Washer - Lock	1
8	3217-7	Nut - Hex.	1
9	3290-378	Tie - Cable	2
10	68-7140	Bolt - U (Model 38591 Only)	1
11	3256-23	Washer - Flat	2
12	3296-29	Nut - Lock	2
13		Wire Assembly	1

Ref. No.	Part No.	Description	No. Used
†14		Fuse - 7-1/2 Amp.	1
15	322-13	Screw - Hex. Flange Hd.	1
16	218-556	Bracket - U	1
17	3231-22	Bolt - Carriage	1
18	32128-35	Nut - Flange Lock	1
19	218-16	Bulb - Sealed Beam	1
20	54-9810	Wire Assembly	1
21	3217-6	Nut - Hex (Model 38591 Only)	1
22	3256-26	Washer - Flat (Model 38591 Only)	1
*	66-6900	Wire Assembly - Adaptor (Model 38591 Only)	1
*	54-9871	Headlamp Assembly (Incl. Ref. #1-5, 7-8 & 13-19)	1

*Not Illustrated
†Obtain Locally



CARBURETOR NO. 640105

Ref. No.	Part No.	Description	No. Used	Ref. No.	Part No.	Description	No. Used
1	632512	Throttle Shaft & Lever Asm.	1	27	631024	Float Shaft	1
2	631970	Throttle Return Spring	1	28	632019	Float	1
6	640107	Throttle Shutter	1	29	631028	Float Bowl O-Ring	1
7	650506	Shutter Screw	4	30	631021	Inlet Needle, Seat, Clip	1
10	632513	Choke Shaft & Lever Asm.	1	31	631022	Spring Clip	1
14	632514	Choke Shutter	1	32	27136	Bowl Drain Asm.	1
15	630735	Choke Positioning Spring	1	33	27554	Drain Plunger Gasket	1
16	632527	Fuel Fitting	1	36	640005	Main Nozzle Tube	1
17	651025	Idle Speed Screw	1	37	63254	O-Ring, Main Nozzle Tube	2
18	630766	Tension Spring	1	40	640106	High Spee Bowl Nut.	1
20	640016	Idle Mixture Screw	1	44	27110	Bowl Nut Washer	1
20A	640053	Idle Restrictor Screw Cap	1	47	630748	Welch Plug, Idle Mixture Well	1
25	632594A	Float Bowl Asm.	1	48	631027	Welch Plug, Vent	1
25	631951	Float Bowl Asm. (Model 38590 Only)	1	60	632347	Repair Kit	1

Obtain Parts From Tecumseh

ENGINE ASSEMBLIES

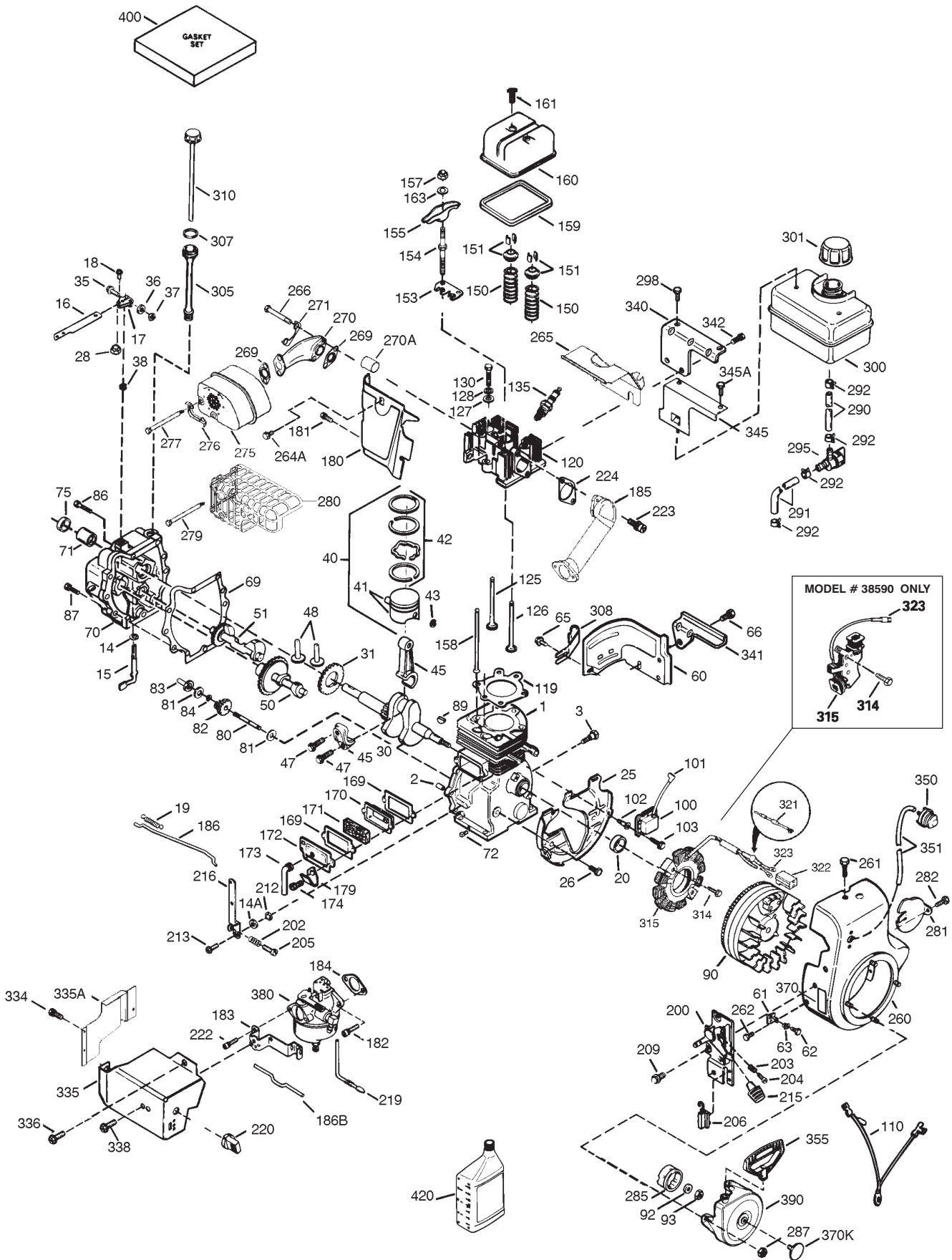
OHSK 120-223604A AND OHSK 120-223605A

Ref. No.	Part No.	Description	No. Used	Ref. No.	Part No.	Description	No. Used
1	37083	Cylinder (Incl. Ref.# 2, 20, 72 & 80)	1	86	650833	Screw	7
2	27652	Dowel Pin	2	87	650832	Screw	1
3	650820	Screw	2	89	32589	Flywheel Key	1
14	28277	Washer	1	90	611094	Flywheel (W/Ring Gear)	1
14A	28558	Washer	1	90	611093	Flywheel (W/Ring Gear) (Model 38590 Only)	1
15	35685	Governor Rod (Incl. Ref.#14 & 38)	1	92	650880	Lock Washer	1
16	35686	Governor Lever	1	93	650881	Flywheel Nut	1
17	29916	Governor Lever Clamp	1	100	35135	Solid State Ignition	1
18	651028	Screw	1	101	610118	Spark Plug Cover	1
19	35688	Extension Spring	1	102	651024	Solid State Mounting Stud	2
20	35319	Oil Seal	1	103	651007	Screw - Torx	2
25	36460	Blower Housing Baffle	1	110	35253	Ground Wire	1
26	650561	Screw	2	119	36932	Cylinder Head Gasket	1
28	30322	Lock Nut	1	120	37084	Cylinder Head	1
30	36706	Crankshaft	1	125	36934	Exhaust Valve (Std.)	1
31	35327	Counterbalance Gear	1	125	36936	Exhaust Valve (1/32)	1
35	29826	Screw	1	126	36935	Intake Valve (Std.)	1
36	29918	Lock Washer	1	126	36937	Intake Valve (1/32)	1
37	29216	Lock Nut	1	127	650691	Washer	6
38	29642	Retaining Ring	3	128	650690	Belleville Washer	6
40	35776A	Piston, Pin & Ring Set (Std.)	1	130	650697A	Screw	4
40	35777A	Piston, Pin & Ring Set (.010)	1	135	34645	Resistor Spark Plug (RN4C)	1
40	35778A	Piston, Pin & Ring Set (.020)	1	150	33507	Valve Spring	2
41	35773A	Piston & Pin Ass'y (Std.) (Incl. Ref.#43)	1	151	33508	Valve Spring Keeper	2
41	35774A	Piston & Pin Ass'y (.010) (Incl. Ref.#43)	1	153	35949	Push Rod Guide	1
41	35775A	Piston & Pin Asm. (.020) (Incl. Ref.# 43)	1	154	650945	Rocker Arm Stud	2
42	35779	Ring Set (Std.)	1	155	35950	Rocker Arm	2
42	35780	Ring Set (.010)	1	157	650947	Lock Nut	2
42	35781	Ring Set (.020)	1	158	35466	Push Rod	2
43	35772	Piston Pin Retaining Ring	2	159	35952	Rocker Arm Cover Gasket	1
45	36898	Connecting Rod Asm. (Incl. Ref.# 47)	1	160	35953A	Rocker Arm Housing	1
47	651033	Connecting Rod Bolt	1	161	30063	Screw - Torx	2
48	35313	Valve Lifter	2	169	27896A	Valve Cover Gasket	2
50	35682A	Camshaft (MCR)	1	170	28423	Breather Body	1
51	35315A	Counterbalance Weight	1	171	28424	Breather Element	1
60	35316A	Blower Housing Extension	1	172	28425	Valve Cover	1
61	34126	Grommet Mounting Bracket	1	173	35350	Breather Tube	1
62	650760	Screw	1	174	650128	Screw	2
63	28545	Grommet	1	179	30593	Retaining Clip	1
65	30200	Screw	1	180	35954	Blower Housing Extension	1
66	650561	Screw	1	181	30200	Screw	1
69	35683	Cylinder Cover Gasket	1	182	650517	Screw	2
70	35684A	Cylinder Cover (Incl. Ref.#14,15,38,71,75)	1	183	34583A	Choke Bracket	1
71	35377	Crankshaft Bushing	1	184	33263	Carb. To Intake Pipe Gasket	1
72	27642	Oil Drain Plug	1	185	37085	Intake Pipe	1
75	35319	Oil Seal	1	186	35691	Governor Link	1
80	35751	Governor Shaft	1	186B	36653	Choke Spring	1
81	35479	Washer	2	200	35702	Control Bracket (Incl. Ref.#203, 204 & 206)	1
82	35321	Governor Gear Asm.	1	202	36482	Compression Spring	1
83	35322	Governor Spool	1	203	31342	Compression Spring	1
84	29193	Retaining Ring	1	204	651029	Screw	1
				205	651019	Screw	1
				206	610973	Terminal	1
				209	650821	Screw	2

Obtain Parts From Tecumseh

ENGINE ASSEMBLIES

OHSK 120-223604A AND OHSK 120-223605A (Cont.)

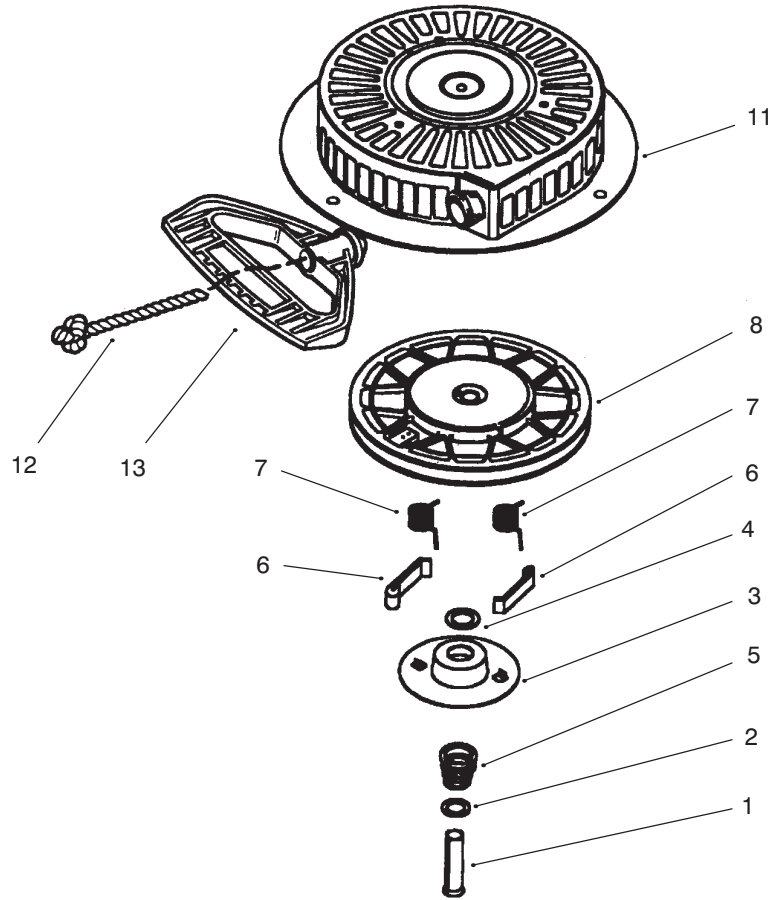


ENGINE ASSEMBLIES

OHSK 120-223604A AND OHSK 120-223605A (Cont.)

Ref. No.	Part No.	Description	No. Used	Ref. No.	Part No.	Description	No. Used
212	30773A	Bushing	1	301	36246	Fuel Cap	1
213	650930	Screw	1	305	35574	Oil Fill Tube	1
215	35440	Control Knob	1	307	35499	O-Ring	1
216	35679	R.P.M. Adjusting Lever	1	308	35539	Fill Tube Clip	1
219	35689	Choke Rod	1	310	35700	Dipstick	1
220	35438	Choke Knob	1	314	650873	Screw	2
222	28820	Screw	2	315	611104	Alternator Coil (3/5 Split) (Incl. Ref.#321-323) (Model 38591 Only)	1
223	650971	Screw - Torx	2	315	611111	Alternator Coil (18 Watt - Incl. Ref.#323) (Model 38590 Only))	1
224	33515A	Intake Pipe Gasket	1	321	611161	Diode (Model 38591 Only)	1
260	35694	Blower Housing	1	322	611142	Connector Body (Model 38591 Only)	1
261	650990	Screw - Torx	1	323	611118	Terminal	1
262	29747B	Screw - Torx	2	334	650257	Screw	2
264A	30063	Screw - Torx	1	335	35698	Carburetor Cover	1
265	37086	Cylinder Head Cover	1	335A	37087	Carburetor Cover	1
266	650876	Screw	2	336	650765	Screw	1
269	35762	Exhaust Manifold Gasket	2	338	650821	Screw	2
270	37094	Exhaust Manifold	1	340	35696	Fuel Tank Bracket	1
270	35870	Exhaust Manifold (Model 38590 Only)	1	341	35697	Fuel Tank Bracket	1
270A	35829A	Exhaust Port Liner	1	342	792028	Screw	2
271	35293	Locking Plate	1	345	35699	Heat Baffle	1
275	36524	Muffler	1	345A	37087	Screw	2
276	35348	Locking Plate	1	350	570682	Primer Assembly	1
277	650877	Screw	2	351	32180C	Primer Line	1
279	651011	Screw (Model 38591 Only)	5	355	590574	Starter Handle	1
280	37095	Heat Sheild (Model 38591 Only)	1	370	36261	Instruction Decal	1
281	33013	Starter Bubble Cover	1	370K	36695	Starter Decal	1
282	650760	Screw	1	380	640105	Carburetor (Incl. Ref.# 184)	1
285	35985B	Starter Cup	1	390	590733	Rewind Starter	1
287	29752	Nut & Lock Washer	4	400	36947A	Gasket Set	1
290	30962	Fuel Line	1	420	730226	SAE 5W30 4-Cycle Engine Oil (Quart)	1
291	29774	Fuel Line	1				
292	26460	Fuel Line Clamp	4				
295	35857	Fuel Shut-Off Valve	1				
298	650665	Screw	2				
300	34156A	Fuel Tank (Incl. 292 & 301)	1				

Obtain Parts From Tecumseh

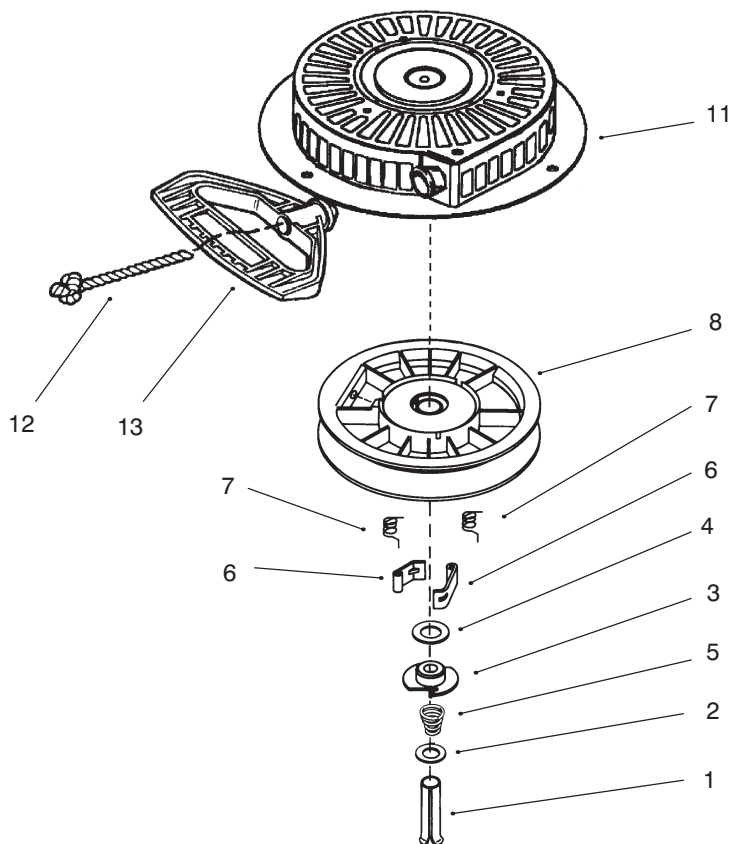


RECOIL STARTER NO. 590733

Ref. No.	Part No.	Description	No. Used
1	590599A	Spring Pin	1
2	590600	Washer	1
3	590696	Retainer	1
4	590601	Washer	1
5	590697	Brake Spring	1
6	590698	Starter Dog	2

Ref. No.	Part No.	Description	No. Used
7	590699	Dog Spring	2
8	590709	Pulley & Rewind Spring	1
11	590734	Starter Housing Asm.	1
12	590535	Starter Rope	1
13	590574	Mitten Grip Handle	1

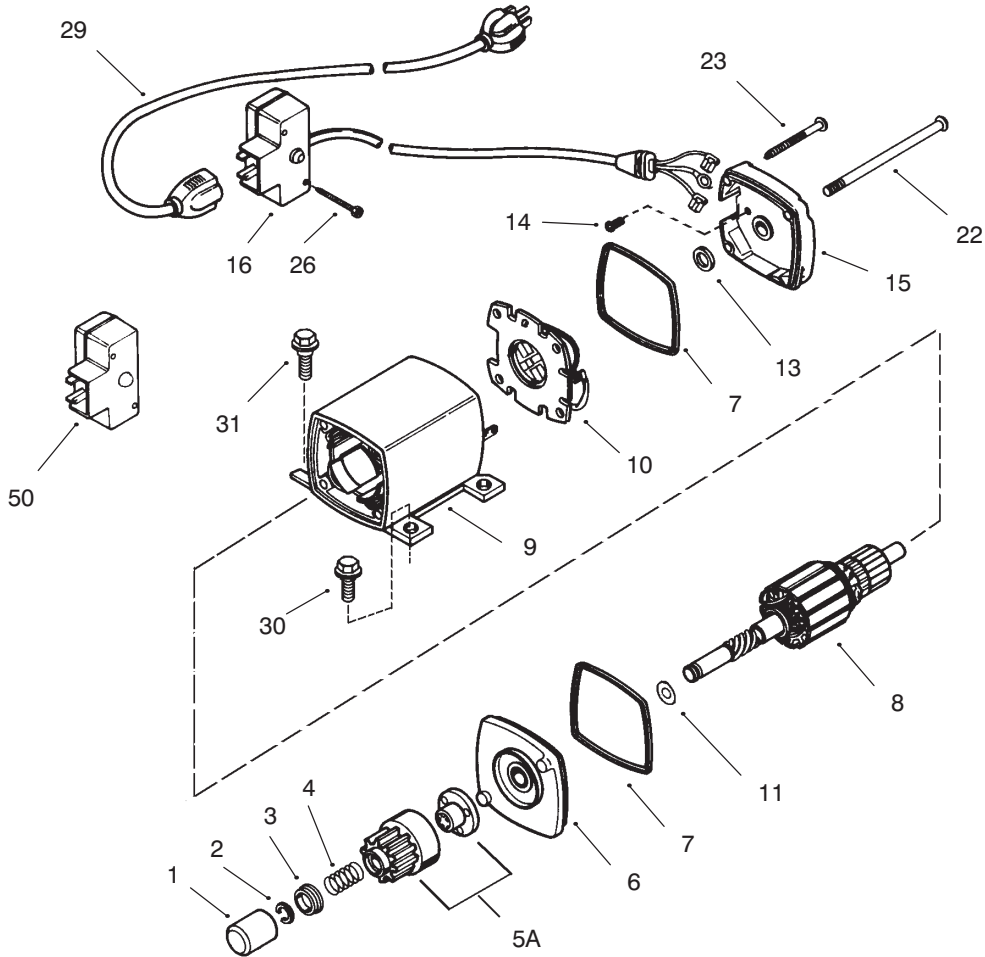
Obtain Parts From Tecumseh



RECOIL STARTER NO. 590749 (Optional)

Ref. No.	Part No.	Description	No. Used	Ref. No.	Part No.	Description	No. Used
1	590599A	Spring Pin	1	7	590412	Dog Spring	2
2	590600	Washer	1	8	590682	Pulley & Rewind Spring	1
3	590679	Retainer	1	11	590750	Starter Housing Asm.	1
4	590601	Washer	1	12	590535	Starter Rope	1
5	590678	Brake Spring	1	13	590574	Mitten Grip Handle	1
6	590680	Starter Dog	2				

Obtain Parts From Tecumseh



ELECTRIC STARTER NO. 33329D

Ref. No.	Part No.	Description	No. Used
1	33451	Dust Cover	1
2	33842	Retainer Ring	1
3	33430	Spring Retainer	1
4	33431	Anti-drift Spring	1
5A	37050	Gear and Nut (Incl. Ref.# 2)	1
6	35449	Drive End Cap Asm. (Incl. Ref.# 7)	1
7	35450	O-Ring	2
8	35915	Armature	1
9	35451A	Housing Assembly	1
10	35452A	Brush Card Assembly	1
11	35911	Thrust Washer	1

Ref. No.	Part No.	Description	No. Used
13	590500	Thrust Washer	1
14	33441	Ground Screw	1
15	35453	Commutator End Cap Asm. (Incl. Ref.# 7)	1
16	35454	Switch Box Assembly (Incl. Ref# 26)	1
22	35455	Case Bolt	2
23	35456	Ground Screw	1
26	650819	Screw	2
29	32450A	Extension Cord	1
30	30063	Screw - Torx	2
31	650820	Screw	2
50	730623	Switch Repair Kit	1

Obtain Parts From Tecumseh

TORO PART NUMBER INDEX

3319—764 Rev A

Part No.	Description	Pg. No.	Ref. No.	Qty.	Part No.	Description	Pg. No.	Ref. No.	Qty.
3-0750	Washer – Retaining	1	2	2	62-1110	Lever – Index Wheel	9	3	1
3-4244	Pulley – Idler	6	6	2	62-1120	Lever – Reverse	9	22	1
5-2490	Bolt – Shoulder	6	35	2	62-1130	Lever – Reverse	9	20	1
7-0045	Seal – Oil	8	2	2	62-1140	Cover – Latch	9	12	1
11-0590	Screw – Hex Hd.	3	33	4	62-1150	Bushing – Worm	8	16	1
12-3270	Screw	5	49	3	62-1160	Bushing – Intermediate	5	46	4
13-3559	Gear – Bevel Reverse 36T	5	59	1	62-1170	Bushing – Flange	5	38	2
17-4279	Loose Parts Kit	11	*	1	62-1180	Bushing – Output (Flange)	4	1	1
17-4289	Loose Parts kit	11	*	1	62-1190	Bracket – Bellcrank	4	22	1
20-0980	Bearing – Auger	2	57	2	62-1230	Washer – Rubber	10	33	1
20-0990	Flange – Bearing (Inner)	2	56	2	62-1290	Knob – Shift	9	1	1
20-1000	Flange – Bearing (Outer)	2	58	2	62-1300	Pulley – Impeller	1	24	1
25-5090	Spacer – Auger Hub	2	55	2	62-1310	Pulley – Traction	5	50	1
26-6110	Flange – Bearing (Front)	2	40	1	62-1320	Knob – Chute Control	10	17	1
26-6120	Flange – Bearing (Rear)	2	38	1	62-1330	Bolt – Shoulder	6	24	2
29-9570	Bushing – Yoke	5	45	1	62-1350	Bushing – Output	4	27	2
32-251-1	Washer – Flat,	3	20	5	62-1381	Handle – R.H.	10	9	1
36-180	Washer – Lock, Model	3	19	5	62-1430	Retainer – Chute	1	11	3
37-6560	Bushing – Input	8	10	1	62-1440	Cover – Engine Frame	2	32	1
38-7820	Bearing – Ball	4	36	2	62-1460	Gear – Universal	10	32	2
40-5940	Switch – On/Off	10	21	1	62-1470	Base – Lockout	9	42	1
42-657	Screw / Washer, Model	3	12	1	62-1490	Plate – Guide	10	15	1
42-671	Screw/Washer, Model	3	18	5	62-1520	Cover – Knob	10	19	1
52-2861	Washer	2	43	4	62-1532	Shaft – Auger (32)	8	1	1
53-7670	Decal – Warning Auger	1	5	1	62-1640	Lever – Trip	10	12	1
54-9810	Assembly – Wire	11	*	1	62-1650	Spring – Torsion	9	6	1
54-9810	Wire Assembly	12	20	1	62-1690	Cover – Detent	4	11	1
54-9871	Headlamp Assembly	12	*	1	62-1700	Lever – Lockout	9	19	1
62-0120	Gear – Helical	8	15	1	62-1710	Spring – Flat	9	16	1
62-0170	Wheel – Index	9	41	1	62-1720	Rod – Chute Gear	1	23	1
62-0180	Tang – Index	9	5	1	62-1740	Bracket – Cable	4	7	1
62-0200	Gear – 27T	4	31	1	63-2030	Rod – Cross	10	27	1
62-0210	Gear – 33T	5	43	1	63-2080	Cover – Belt (Upper)	2	28	1
62-0220	Gear – 34T	4	30	1	63-2112	Axle Assembly	6	29	1
62-0240	Gear – 45T	4	29	1	63-2150	Frame – Control	9	23	1
62-0250	Gear – 29T	4	32	1	63-2160	Rod – Chute Crank	10	16	1
62-0260	Gear – 51T	5	42	1	63-2170	Cover – Lever Lock	10	1	1
62-0280	Latch – Lock	10	6	1	63-2180	Bracket – Gear	1	7	1
62-0290	Cam – Release	10	4	1	63-2190	Pin – Gearshift Link	4	15	1
62-0300	Tang – Locking	10	3	1	63-2200	Cable – Latch	9	39	1
62-0310	Key – Shift	5	56	2	63-2210	Cable – Gearbox	9	38	1
62-0320	Sleeve	4	28	1	63-2220	Spring – Extension	9	8	1
62-0330	Shaft – Intermediate	5	40	1	63-2230	Spring – Extension	9	21	1
62-0340	Sleeve – Gear 19T	4	34	1	63-2240	Spring – Extension	9	17	1
62-0350	Pinion – Bevel 19T	5	53	1	63-2250	Bushing – Axle	6	26	2
62-0360	Gear – Compound 19T/41T	5	41	1	63-2270	Spring – Torsion	9	40	1
62-0370	Gear – 41T	4	35	1	63-2280	Washer – Thrust	4	33	1
62-0380	Hub – Pulley	5	52	1	63-2300	Retainer – Cable	1	26	1
62-0430	Collar – Shift (Speed)	4	3	1	63-2410	Decal – Choke	3	17	1
62-0470	Latch – Arm	6	17	1	63-2450	Decal – Throttle	3	16	1
62-0480	Gear Case – Lower	5	44	1	63-2480	Decal	9	10	1
62-0490	Gear Case – Upper	4	24	1	63-2600	Bellcrank	4	20	1
62-0500	Gear – 15T	5	48	1	63-2610	Pin – Tang	9	9	1
62-0722	Housing – 32	1	6	1	63-2630	Bracket – Shift	9	33	1
62-0820	Gear – Worm	1	22	1	63-2650	Screw – Shoulder	9	18	2
62-0840	Chute Assembly	1	19	1	63-2670	Plate – Chute Retainer	1	10	3
62-0860	Link – Gearshift	4	18	1	63-2700	Cable – Impeller	11	41	1
62-0870	Lever – Gear Shift	4	16	1	63-2710	Cable – Traction	11	40	1
62-0880	Lever – Direction Shift	4	5	1	63-2740	Spring – Torsion	6	36	1
62-0920	Sheave Half – Traction	3	7	1	63-2820	Arm – Brake	6	2	1
62-0930	Hub – Sheave	3	5	1	63-2830	Rod – Shift (Lower)	9	34	1
62-0940	Sheave Half – Impeller	3	3	1	63-2850	Bracket – Idler Arm	6	3	1
62-0970	Pin – Idler	6	9	1	63-2870	Spring – Extension	6	14	2
62-1000	Guard – Chain R.H.	6	30	1	63-2881	Spring – Torsion	6	13	1
62-1010	Guard – Chain L.H.	6	28	1	63-2890	Spring – Compression	4	9	1
62-1020	Button – Detent	4	10	1	63-2900	Washer – Plastic	1	17	2
62-1040	Yoke – Shift	4	26	2	63-2910	Spring – Torsion	10	7	1
62-1050	Lever – Impeller	10	8	1	63-2920	Spring – Extension	4	4	1
62-1060	Lever – Traction	10	24	1	63-2930	Chain – Drive	3	29	1
62-1070	Bushing – Lever	10	11	2	63-2955	Belt – Traction	3	6	1
62-1080	Shaft – Output	5	37	1	63-2967	Belt – Impeller	3	4	1
62-1100	Lever – Latch	9	7	1	63-2990	Frame – Transmission	3	31	1

TORO PART NUMBER INDEX (Cont.)

Part No.	Description	Pg. No.	Ref. No.	Qty.	Part No.	Description	Pg. No.	Ref. No.	Qty.
63-3020	Guard - Chute	1	14	1	94-4496	Screw - Hex Flange Hd.	6	31	3
63-3050	Decal - Lever	10	25	1	94-6961	Screw - Pan Hd.	9	11	2
63-3130	Clip - Chute Guard	1	12	1	94-6961	Screw - Pan Hd.	10	35	2
63-3290	Cover - Cable	2	29	10	94-8079	Decal - Danger Chute	1	20	1
63-3340	Washer	6	22	4	95-7930	Spacer	7	60	1
63-3380	Spacer - Traction Lever	10	22	1	95-7947	Cap Plug	3	40	2
63-3410	Bolt - Shoulder	4	13	1	127-21	Guard-Muffler, Model	3	13	1
63-3420	Harness - Wire	11	*	1	127-24	Guard-Muffler,	3	21	1
63-3450	Bearing - Impeller	2	39	1	218-16	Bulb - Sealed Beam	12	19	1
63-8360	Key - Switch	10	20	1	218-552	Bucket - Headlamp	12	3	1
66-4100	Plate - R.H.	2	*	1	218-553	Switch Assembly	12	2	1
66-4110	Plate - L.H.	2	34	1	218-554	Bracket	12	4	1
66-6840	Decal - Hot, Model 38590	3	14	1	218-556	Bracket - U	12	16	1
66-6850	Decal - Panel Top	10	14	1	2210-250	Screw	10	2	3
66-6860	Decal - Warning	11	38	1	252-59	Washer - Thrust	4	2	3
66-6860	Decal - Warning	7	40	1	252-71	Bearing - Thrust	8	5	2
66-6900	Assembly - Wire, Adapter	11	*	1	252-76	Bearing - Thrust	8	9	1
66-6900	Wire Assembly - Adaptor	12	*	1	252-78	Washer - Thrust	8	8	2
66-6980	Frame - Engine	2	31	1	252-80	Washer - Thrust	2	36	1
66-7720	Rod - Latch	6	18	1	253-149	Seal - Input	8	11	1
66-7730	Clevis	9	30	1	256-237	Bushing - Sleeve	8	3	2
66-7740	Pivot Arm Assembly	6	23	2	256-296	Bushing - Nyliner	9	31	2
66-7760	Blade - Scraper	2	45	1	257-9	Washer - Thrust	9	14	1
66-7811	Shaft - Impeller	8	6	1	257-10	Washer - Thrust	5	39	4
66-7821	Plate - Side R.H.	1	3	1	281-1	Plug - Pipe Sq. Hd.	8	14	1
66-7831	Plate - Side L.H.	2	46	1	283-3	Pin - Clevis	4	19	1
66-7850	Handlegrip	10	10	2	288-2	Cap - Pipe	3	39	1
66-7920	Impeller	2	50	1	289-34	Nipple - Pipe	3	38	1
66-8010	Spacer	2	51	2	321-3	Screw - Hex Hd.	2	60	8
66-8030	Transmission Assembly	3	30	1	321-9	Screw - Cap Hex. Hd.	9	29	1
66-8060	Pad - Brake	7	42	1	321-15	Screw - Cap Hex Hd.	5	54	1
66-8091	Handle - L.H.	10	29	1	321-44	Screw - Hex. Hd.	2	52	2
66-8100	Panel - Control	10	13	1	322-12	Bolt - Auger	2	59	2
67-5870	Gear - Bevel 36T	5	57	1	322-13	Screw - Hex. Flange Hd.	12	15	1
67-5880	Collar - Shift	5	58	1	323-4	Screw - Hex Hd.	1	1	2
67-9230	Tire & Wheel Assembly	6	34	2	323-7	Screw - Hex Hd.	6	8	2
67-9240	Rod - Shift (Upper)	9	2	1	3210-1	Screw - Hex Hd.	3	35	2
67-9250	Retainer - Shift Rod	9	28	1	3212-8	Screw - Hex. Hd.	3	1	1
68-4310	Gear - 26T	5	47	1	3217-6	Nut - Hex	12	21	1
68-4320	Sleeve - Shift	5	55	1	3217-7	Nut - Hex.	12	8	1
68-7110	Mount - Lamp	12	6	1	3220-3	Nut - Jam	9	35	1
68-7140	Bolt - U	12	10	1	3220-3	Nut - Lock	3	26	1
68-7452	Auger - R.H.	2	54	1	3230-2	Bolt - Carriage	1	8	1
68-7462	Auger - L.H.	2	*	1	3230-23	Screw - Carriage	2	48	11
68-7510	Guide - Belt	3	8	1	3231-22	Bolt - Carriage	12	17	1
68-8410	Cover - Belt (Lower)	2	41	1	3234-5	Screw - Hex Washer Hd.	2	62	4
68-9200	Differential Asm	7	59	1	3234-7	Screw - Hex Flange Hd.	3	25	4
68-9200	Housing - L.H.	7	44	1	3234-7	Screw - Hex Flange Hd.	7	41	2
68-9250	Coupling - Differential	7	48	1	3234-13	Screw - Hex. Hd.	6	5	1
68-9260	Spring - Lockout	7	49	1	3234-28	Screw - Hex Flange Hd.	1	4	12
68-9270	Sprocket (32T)	7	43	1	3242-4	Screw - Set Sq. Hd.	1	25	2
68-9310	Guard - Chain R.H.	7	58	1	3253-4	Washer - Lock	3	34	2
68-9390	Decal - Differential	2	61	1	3253-6	Washer - Lock	3	2	1
74-1440	Skid Assembly	2	44	2	3253-21	Washer - Lock	12	7	1
74-1540	Gearcase Assembly - L.H.	8	13	1	3255-8	Washer - Lock	12	5	2
74-1550	Gearcase Assembly - R.H.	8	4	1	3256-1	Washer - Flat	6	21	2
74-1562	Auger Gearbox Assembly	2	53	1	3256-1	Washer - Flat	9	27	2
78-2920	Joint - Ball	9	36	1	3256-14	Washer - Flat	1	16	1
78-2920	Joint - Ball	3	27	1	3256-14	Washer - Flat	11	43	2
88-0810	Spring - Extension	11	39	1	3256-23	Washer - Flat	12	11	2
92-6033	Boot - Switch	12	1	1	3256-23	Washer - Flat	9	24	3
93-1265	Decal - Hot, Model 38591	3	*	1	3256-23	Washer - Flat	2	42	1
93-8029	Decal - Panel Front	10	36	1	3256-26	Washer - Flat	12	22	1
93-8045	Arm - Traction Idler	6	10	1	3256-38	Washer - Flat	6	12	1
93-8046	Arm - Impeller Idler	6	11	1	3256-41	Washer	3	37	1
94-2559	Decal - Danger Chute	1	*	1	3256-61	Washer - Flat	1	21	1
94-2568	Decal - Warning Auger	1	*	1	3257-10	Key - Woodruff	8	12	1
94-2572	Decal - Primer	3	15	1	3257-23	Key - Woodruff	2	35	1
94-2575	Decal - Warning	11	*	1	3257-41	Key - Woodruff	7	53	2
94-2575	Decal - Warning	7	*	1	3269-23	Rivet	2	30	4
94-2578	Decal - Panel Top	10	*	1	3272-1	Pin - Cotter	4	17	1
94-2782	Cap - Wire, Model 38590	3	36	1	3274-13	Screw - Machine	1	13	3

*Not Illustrated

TORO PART NUMBER INDEX (Cont.)

Part No.	Description	Pg. Ref. No. No. Qty.	Part No.	Description	Pg. Ref. No. No. Qty.
3290-243	Pin - Klik	6 38 2	3296-47	Nut - Lock	7 39 2
3290-320	Nut - Push	9 15 1	3296-47	Nut - Lock	2 47 12
3290-320	Nut - Push	10 18 2	3296-59	Nut - Lock	6 7 2
3290-326	Nut - Push	1 15 2	32104-71	Screw - Pan Hd.	4 12 1
3290-359	Screw	10 28 1	32104-76	Screw - Self Tapping	10 34 2
3290-378	Tie - Cable	12 9 2	32104-95	Screw - Hex Washer Hd.	4 21 2
3290-378	Tie - Cable	10 30 4	32120-46	Ring - Retaining	6 1 2
3290-422	Nut - Push	9 4 1	32120-46	Ring - Retaining	9 13 1
3290-456	Washer - Belleville	9 37 1	32121-9	Pin - Roll	6 19 2
3290-461	Washer - Belleville	6 16 2	32121-50	Pin - Roll	10 31 2
3290-461	Washer - Belleville	3 32 4	32121-106	Pin - Coil	4 6 1
3290-476	Fastener - Panel	6 37 1	32121-120	Pin - Coil	5 60 2
3290-477	Washer - Curved	4 14 1	32122-32	Screw	1 18 1
3296-2	Nut - Lock	1 9 4	32128-20	Nut - Lock	3 24 4
3296-2	Nut - Lock	10 23 1	32128-32	Nut - Flange Lock	5 51 1
3296-6	Nut - Lock	3 28 1	32128-35	Nut - Flange Lock	12 18 1
3296-6	Nut - Lock	9 32 1	32144-4	Screw - Hex Flange Hd.	1 27 6
3296-23	Nut - Lock	6 25 2	32144-4	Screw - Hex Flange Hd.	6 20 2
3296-29	Nut - Lock	12 12 2	32144-4	Screw - Self Tapping	4 8 2
3296-29	Nut - Lock	9 25 7	32144-14	Screw	2 33 6
3296-29	Nut - Lock	2 37 16	32144-14	Screw - Hex Flange Hd.	10 26 6
3296-39	Nut - Lock	6 15 2	32144-73	Screw - Hex. Washer Hd.	7 51 1
3296-42	Nut - Lock	6 4 1	32144-86	Screw - Hex Washer Hd.	4 25 6
3296-42	Nut - Lock	4 23 1	32144-110	Screw - Hex Washer Hd.	8 17 9
3296-42	Nut - Lock	9 26 1	32151-33	Ring - Snap	8 7 1
3296-42	Nut - Lock	2 49 10	32151-66	Ring - Retaining	10 5 1
3296-47	Nut	7 56 6			
3296-47	Nut - Lock	11 37 4			

