



5.5 HP Lawn Vacuum

Model No. 62925–220000001 and Up

Parts Catalog

Ordering Replacement Parts

To order replacement parts, please supply: the part number, the quantity, and the description of each part desired.

Understanding Reference Numbers

Each identified part in an illustration has a reference number. The reference number for a part also appears in the parts list, along with other information about the part.

This catalog uses two special reference number formats, one to indicate parts in a service assembly and another to indicate the quantity of a given part in an illustration.

Service Assembly Reference Numbers

Parts in service assemblies have reference numbers in the form **a:b**. The **a** represents the reference number of the entire service assembly and the **b** represents a sequential number unique to each part within the service assembly.

For example, a wheel assembly might be identified by reference number **6**, the tire by **6:1**, the valve by **6:2**, and the wheel by **6:3**. When you order the assembly identified by reference number **6**, you receive all parts identified by reference numbers **6:1**, **6:2**, and **6:3**. However, you may also order any part individually.

Reference numbers of this type appear in illustrations and in part lists.

Reference Numbers Indicating Quantity

In an illustration, if a reference number indicates more than one part, the reference number has the form **nX y**. The **n** represents the quantity of the part, the **X** is the multiplication symbol, and the **y** represents the reference number.

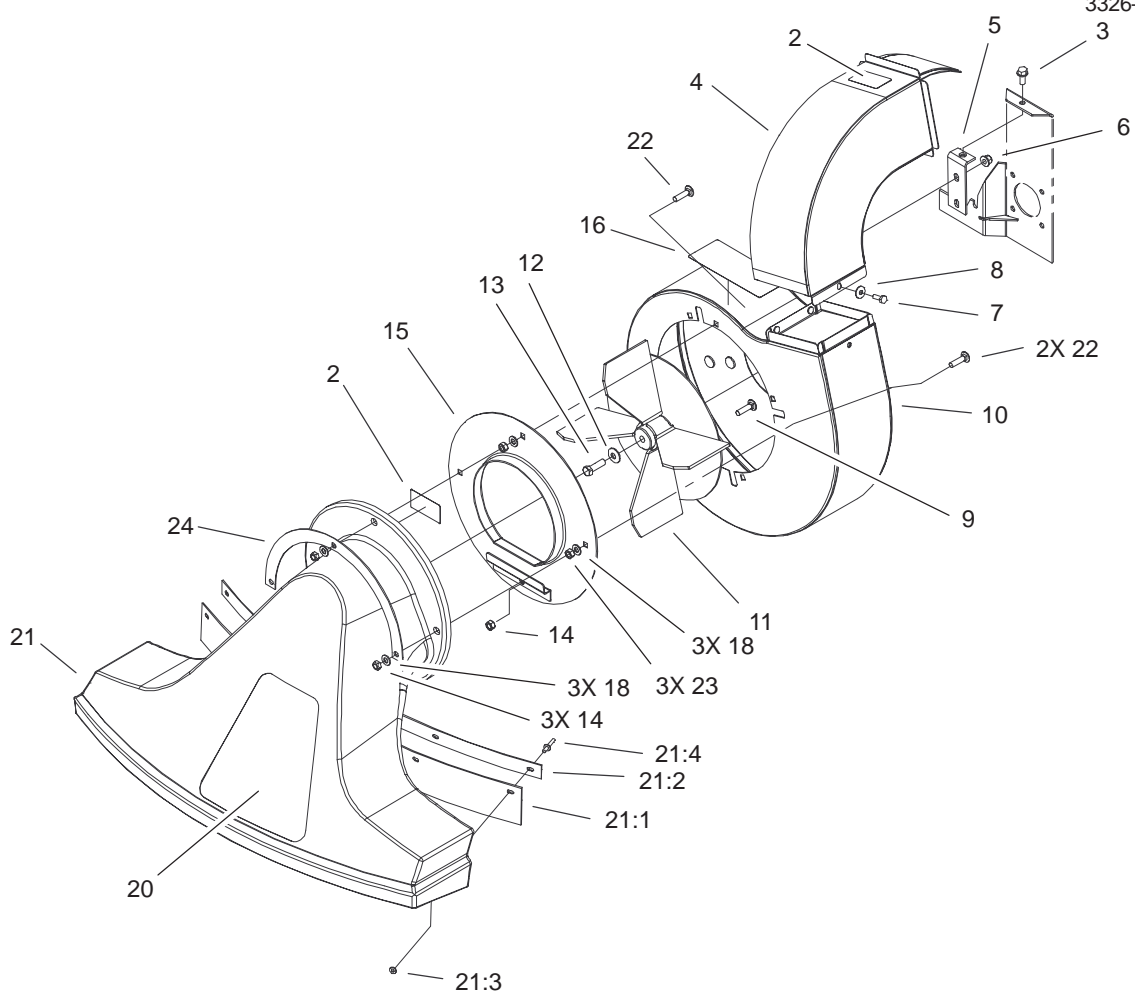
For example, in an illustration, the reference number **2X 37** means that two of the parts identified by reference number **37** are indicated.

Contents

Description	Page	Description	Page
Snout, Blower and Fan Assembly	3	Muffler and Fuel Tank Assembly	
Blower Assembly	4	Engine Briggs and Stratton Model	
Engine and Wheel Support Assembly	5	126402–0245–E1	15
Traction and Wheel Assembly	6	Governor Assembly	
Traction Assembly	7	Engine Briggs and Stratton Model	
Handle and Vacuum Bag Assembly	8	126402–0245–E1	16
Cylinder Assembly		Blower Housing Assembly	
Engine Briggs and Stratton Model		Engine Briggs and Stratton Model	
126402–0245–E1	9	126402–0245–E1	17
Crankshaft Assembly		Starter Assembly	
Engine Briggs and Stratton Model		Engine Briggs and Stratton Model	
126402–0245–E1	10	126402–0245–E1	18
Cylinder Head Assembly		Oil Filter, Tube and Pump Assembly	
Engine Briggs and Stratton Model		Engine Briggs and Stratton Model	
126402–0245–E1	11	126402–0245–E1	19
Crankcase Assembly		Gasket Assembly	
Engine Briggs and Stratton Model		Engine Briggs and Stratton Model	
126402–0245–E1	12	126402–0245–E1	20
Carburetor Assembly		Carburetor Overhaul Kit Assembly	
Engine Briggs and Stratton Model		Engine Briggs and Stratton Model	
126402–0245–E1	13	126402–0245–E1	21
Air Cleaner Assembly			
Engine Briggs and Stratton Model			
126402–0245–E1	14		

Part descriptions in this catalog may include the following abbreviations.

Abbreviation	Meaning	Abbreviation	Meaning
AR	as required	HYD	hydraulic
ASM	assembly	INC	incorporated
CARR	carriage	LH	left hand
DEG	degrees	NI	nylon insert
FH	flat head	PPH	Phillips pan head
GA	gauge	PTH	Phillips truss head
HF	hex flange	PTO	power take off
HH	hex head	RH	right hand
HHF	hex head flange	SFH	slotted fillister head
HLH	hex lag head	SHH	slotted hex head
HJ	hex jam	SQH	square head
HOC	height-of-cut	SHWH	slotted hex washer head
HS	hex socket	SPH	slotted pan head
HSBH	hex socket button head	SRH	slotted round head
HSFH	hex socket flat head	STD	standard
HSH	hex socket head	TAP	self tapping
HWH	hex washer head	TTH	Torx truss head
HWHTF	hex washer head thread forming	WH	wing head

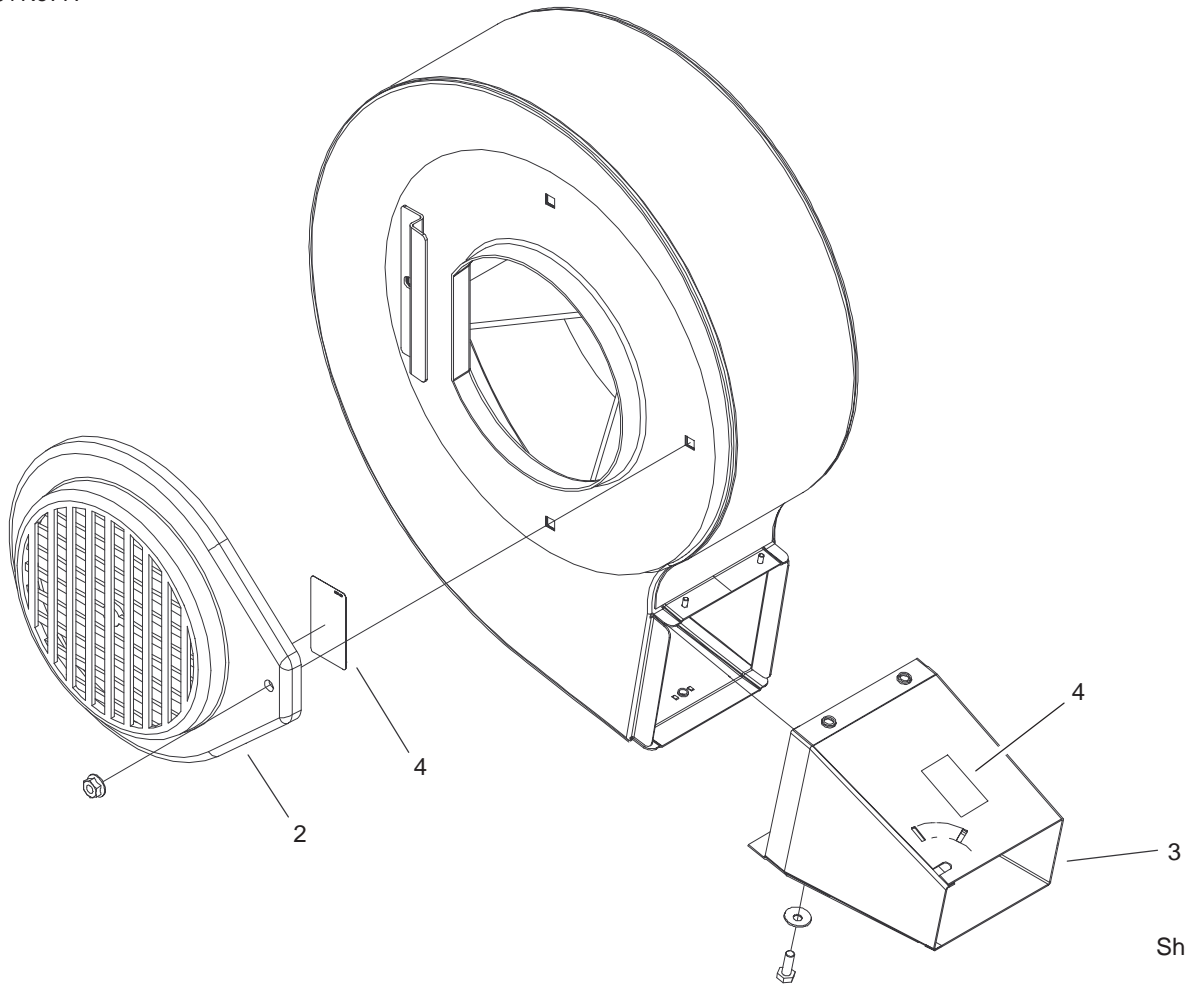


Sheet No.:2

Snout, Blower and Fan Assembly

Ref. No.	Part No.	Qty.	Description
2	93-4139	2	Decal-Bag Caution
3	32144-70	1	Screw-HH
4	20-6130-01	1	Vacuum Chute ASM
5	105-1233-03	1	Bracket-Mounting, Housing
6	3296-58	4	Nut-Lock NI
7	321-4	1	Screw-HH
8	3290-436	1	Washer-Belleville
9	3230-19	1	Screw-CARR
10	20-5890-01	1	Housing-Blower
11	93-3677-03	1	Fan
12	3290-340	1	Washer-Belleville
13	3211-5	1	Screw-HH
14	3296-47	4	Nut-Lock, NI
15	20-5450-01	1	Cover-Blower
16	105-4062	1	Decal-Warning, Rotate
18	3256-23	6	Washer-Flat
20	105-8519	1	Decal - Toro Vacuum
21	40-7000	1	Snout ASM
21:1	20-6830	1	Rubber Flap
21:2	20-6840-03	1	Clamp-Flap
21:3	3256-51	5	Washer-Flat
21:4	3269-22	5	Rivet-Pop
22	3230-3	3	Screw-CARR

Ref. No.	Part No.	Qty.	Description
23	3217-6	3	Nut-Hex
24	105-8543-03	1	Flange-Retainer

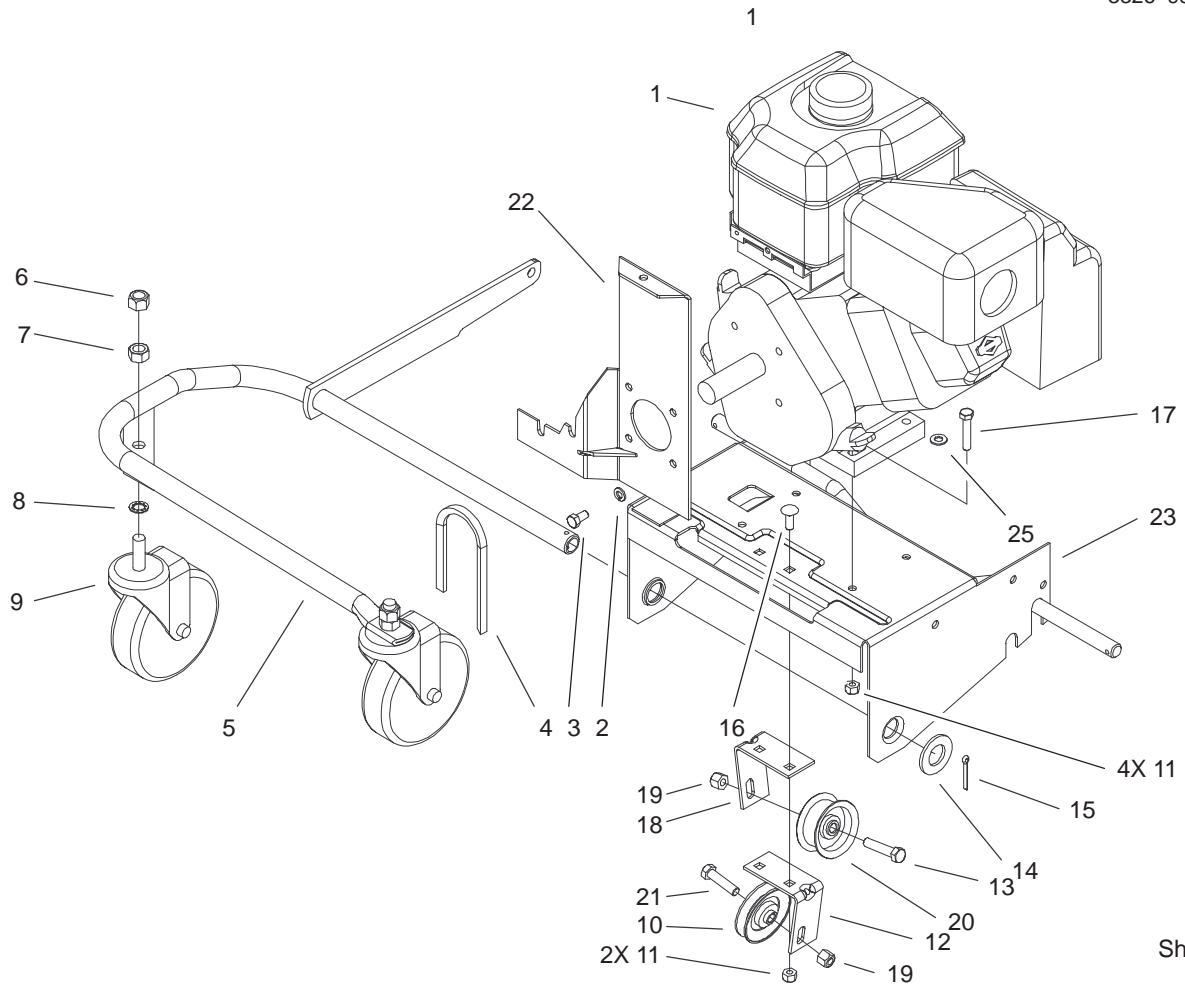


Sheet No.:3

Blower Assembly

Ref. No.	Part No.	Qty.	Description
2	20-5780	1	Intake-Blower
3	93-4124-01	1	Exhaust-Blower
4	93-4139	2	Decal-Bag Caution

Ref. No.	Part No.	Qty.	Description



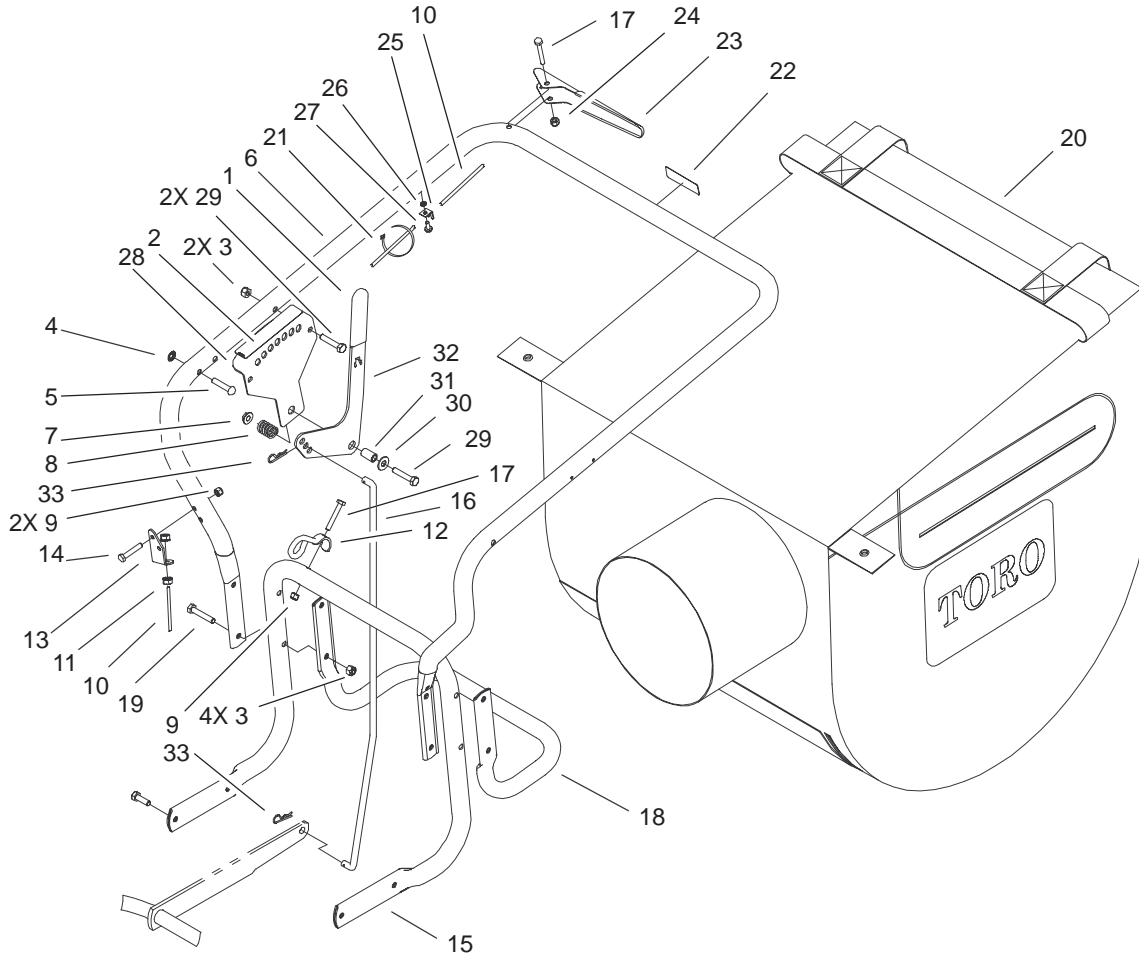
Sheet No.:4

Engine and Wheel Support Assembly

Ref. No.	Part No.	Qty.	Description
☆1		1	Engine B&s 5.5hp Intek 206 Model 126402-0245-E1
2	3253-4	4	Washer-Lock
3	3210-2	4	Screw-HH
4	20-5990	1	V Belt
5	93-4146-03	1	Support-Wheel, Front
6	3296-23	2	Nut-Lock, NI
7	3217-9	2	Nut-HH
8	3254-4	2	Washer-Lock/Int
9	23-3320	2	Caster
10	12-5820	1	Pulley-Idler
11	3296-29	6	Nut-Lock, NI
12	20-8690-03	1	Bracket-Idler Mount, LH
13	323-9	1	Screw-HH
14	3256-29	1	Washer-Flat
15	3272-17	1	Pin-Cotter
16	3230-1	2	Screw-CARR
17	322-8	4	Screw-HH
18	20-8680-03	1	Bracket-Idler Mount, RH
19	3296-39	2	Nut-Lock, NI
20	12-6700	1	Pulley-Idler
21	323-8	1	Screw-HH
22	105-1232-03	1	Bracket-Stabalizer

Ref. No.	Part No.	Qty.	Description
23	20-5560-03	1	Plate-Engine
25	3256-23	1	Washer-Flat

☆ Not serviced separately

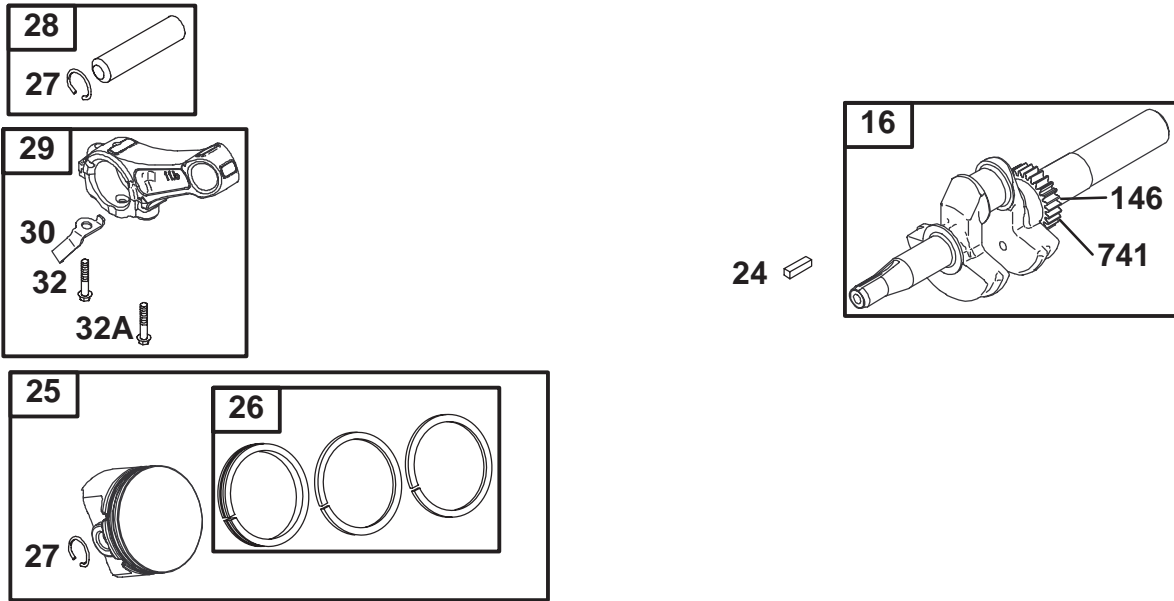


Sheet No.:6

Handle and Vacuum Bag Assembly

Ref. No.	Part No.	Qty.	Description
1	3-7877	1	Grip-Handle
2	93-4137	1	Decal-Height Adjustment
3	3296-29	6	Nut-Lock, NI
4	3290-418	2	Nut-Push In
5	3263-9	2	Rivet
6	23-3570	1	Handle-Upper, Vacuum
7	32128-13	1	Nut-HF
8	20-6110	1	Spring-Height Adjust
9	3296-42	3	Nut-Lock, NI
10	105-1234	1	Cable-Traction
11	32149-5	2	Nut
12	46-8082	1	Guide-Rope
13	33-2830	1	Mount-Bowden, Lower
14	321-9	2	Screw-HH
15	105-1236	1	Handle-Lower
16	105-1235	1	Rod-Height Adjust
17	321-10	2	Screw-HH
18	66-1640-03	1	Support-Bag
19	322-9	4	Screw-HH
20	105-1245	1	Bag-Vacuum
21	3290-378	2	Tie-Cable
22	93-4141	1	Decal-Traction Control
23	93-8464	1	Lever W/Grip

Ref. No.	Part No.	Qty.	Description
24	32111-7	1	Nut-Cap
25	20-8780	1	Retaining-Clip
26	3255-17	1	Washer-Lock/Ext
27	32144-112	1	Screw-HWHTF
28	20-5820-03	1	Bracket-Adjustment
29	322-8	3	Screw-HH
30	3256-3	1	Washer-Flat
31	20-5650	1	Spacer-Adjust
32	23-3410-03	1	Handle-Height Adjust
33	3290-250	2	Pin-Hair, Cotter

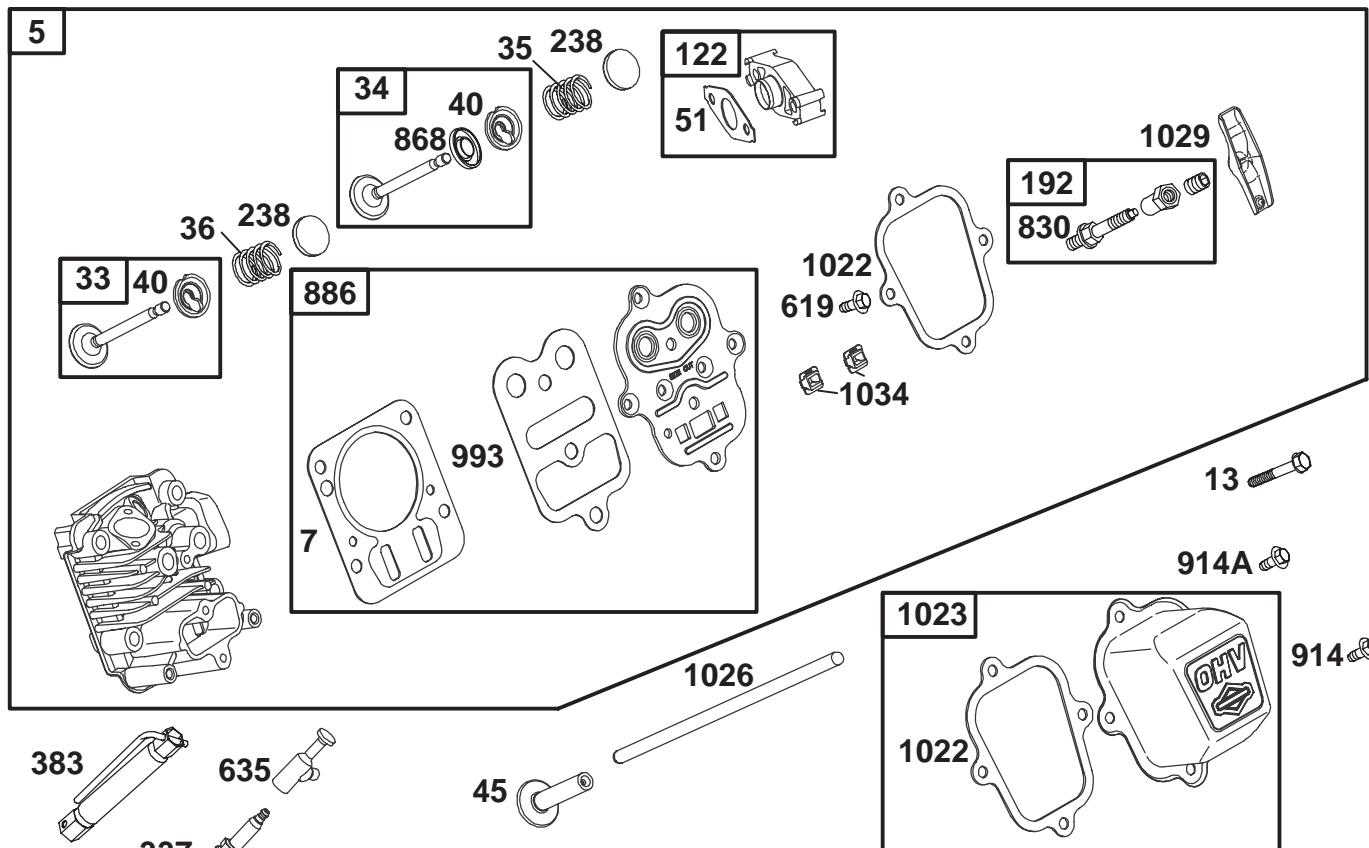


Assemblies include all parts shown in frames.

Crankshaft Assembly Engine Briggs and Stratton Model 126402-0245-E1

Ref. No.	Part No.	Qty.	Description
16	693596	1	Crankshaft
24	222698	1	Flywheel Key
25	690021	1	Piston Assembly (Standard)
	694167	1	Piston Assembly (.010" Oversize)
	694168	1	Piston Assembly (.020" Oversize)
	694169	1	Piston Assembly (.030" Oversize)
26	499631	1	Ring Set (Standard)
	692785	1	Ring Set (.010" Oversize)
	692786	1	Ring Set (.020" Oversize)
	692787	1	Ring Set (.030" Oversize)
27	691866	1	Lock-Piston Pin
28	499423	1	Pin-Piston
29	690124	1	Rod-Connecting
30	692562	1	Dipper-Connecting Rod
32	691664	1	Screw

Ref. No.	Part No.	Qty.	Description
32A	695759	1	(Connecting Rod) Screw
146	690979	1	Timing Key
741	695087	1	Timing Gear



Assemblies include all parts shown in frames.

Cylinder Head Assembly Engine Briggs and Stratton Model 126402-0245-E1

Ref. No.	Part No.	Qty.	Description
5	693643	1	Cylinder Head
★△7	695166	1	Cylinder Head Gasket
13	691137	1	Screw (Cylinder Head)
33	499642	1	Exhaust Valve
34	499641	1	Intake Valve
35	691304	1	Valve Spring (Intake)
36	691304	1	Valve Spring (Exhaust)
40	692194	1	Valve Retainer
45	690977	1	Valve Tappet
★△◆◆51	692555	1	Gasket-Intake
★●122	693749	1	Spacer-Carburetor
192	694543	1	Adjuster-Rocker Arm
238	691300	1	Valve Cap
337	691043	1	Screw (Cylinder Head Plate)
383	19374	1	Sparkplug Wrench
619	691108	1	Screw (Cylinder Head Plate)
635	692076	1	Sparkplug Boot
830	694544	1	Stud-Rocker Arm
★△868	692044	1	Valve Seal
886	696268	1	Cylinder Head/Plate

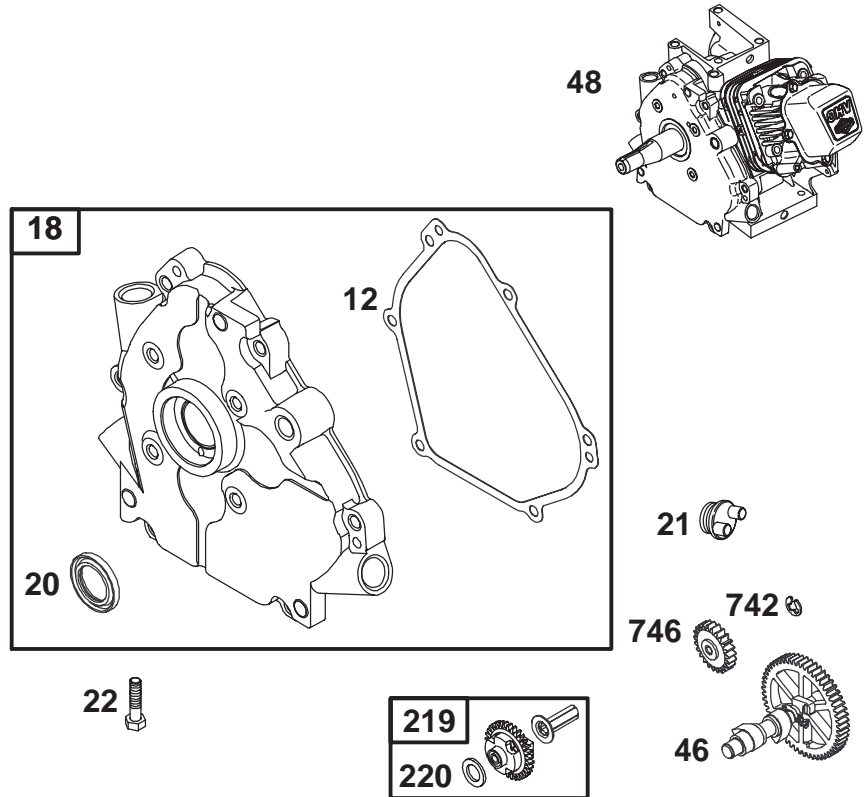
Ref. No.	Part No.	Qty.	Description
914	692198	1	Gasket Kit Screw (Rocker Cover)
914A	692557	1	Screw (Rocker Cover)
★△993	694088	1	Cylinder Head Plate Gasket
★△1022	691890	1	Rocker Cover Gasket
1023	499924	1	Rocker Cover
1026	693517	1	Push Rod
1029	691230	1	Rocker Arm
1034	691343	1	Push Rod Guide

△ Included in Valve Gasket Set-Ref. 1095.

★ Included in Engine Gasket Set-Ref. 358.

● Included in Carburetor Overhaul Kit-Ref. 121.

◆ Included in Carburetor Gasket Set-Ref. 977.



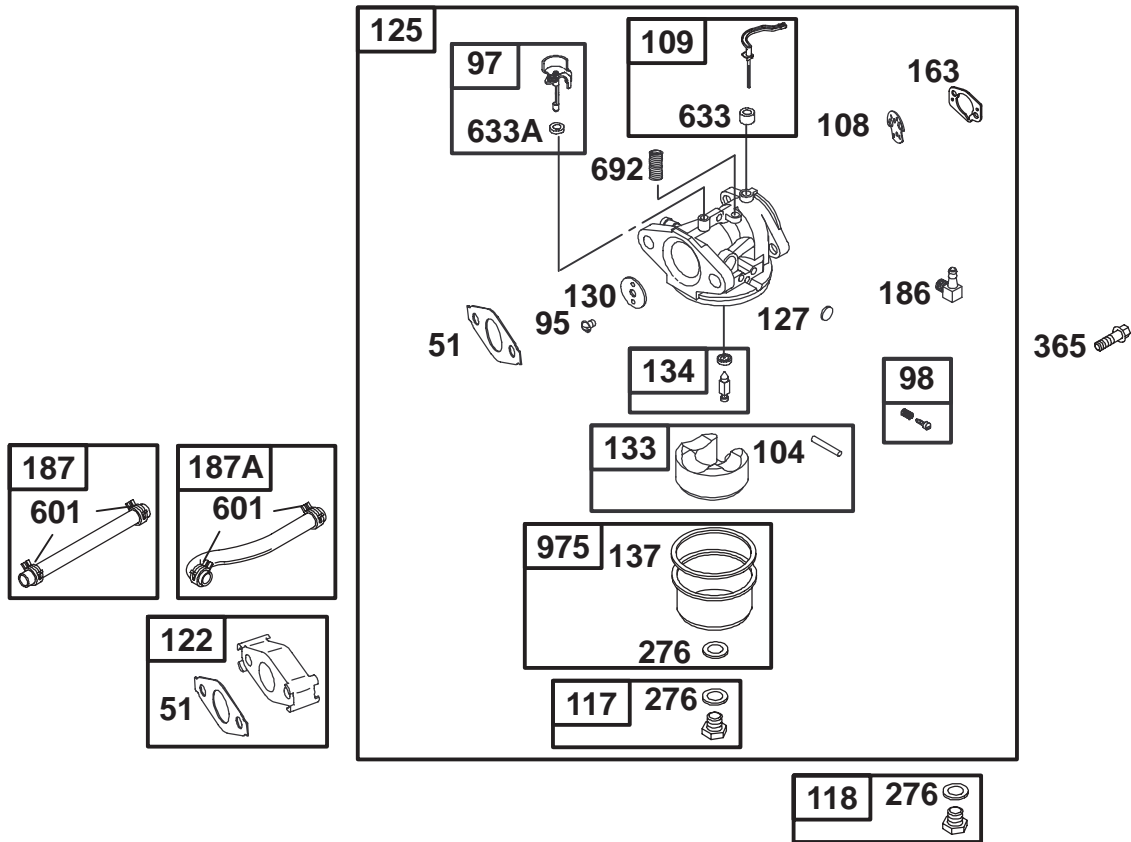
Assemblies include all parts shown in frames.

Crankcase Assembly Engine Briggs and Stratton Model 126402-0245-E1

Ref. No.	Part No.	Qty.	Description
★12	692549	1	Crankcase Cover Gasket
18	694466	1	Crankcase Cover
★20	692550	1	Oil Seal (PTO Side)
21	281658	1	Oil Fill Cap
22	692551	1	Screw (Crankcase Cover/ Sump)
46	693404	1	Camshaft
48	693781	1	Short Block
219	693578	1	Governor Gear
220	691724	1	Washer (Governor Gear)
742	692564	1	E Ring Retainer
746	692566	1	Idler Gear

Ref. No.	Part No.	Qty.	Description

★ Included in Engine Gasket Set-Ref. 358.



Assemblies include all parts shown in frames.

Carburetor Assembly Engine Briggs and Stratton Model 126402-0245-E1

Ref. No.	Part No.	Qty.	Description
Δ★◆51	692555	1	Intake Gasket
95	691636	1	Screw (Throttle Valve)
97	690024	1	Throttle Shaft
98	398185	1	Idle Speed Kit
●104	691242	1	Float Hinge Pin
108	692567	1	Choke Valve
109	693628	1	Choke Shaft
117	498978	1	Main Jet (Standard)
118	497466	1	Main Jet (High Altitude)
★●122	693749	1	Carburetor Spacer
125	697028	1	Carburetor
●127	691739	1	Welch Plug
130	691181	1	Throttle Valve
133	398187	1	Carburetor Float
●134	398188	1	Needle/Seat Kit
●◆137	693981	1	Float Bowl Gasket
★◆◆163	696979	1	Air Cleaner Gasket
186	692317	1	Hose Connector
187	691050	1	Fuel Line (Cut to Required Length)

Ref. No.	Part No.	Qty.	Description
●◆276	271716	1	(Molded) Sealing Washer
365	692568	1	Screw (Carburetor)
601	95162	1	Hose Clamp
●◆633	693867	1	Choke/Throttle Shaft Seal
●◆633A	691321	1	Choke/Throttle Shaft Seal
692	690572	1	Detent Spring
975	493640	1	Float Bowl

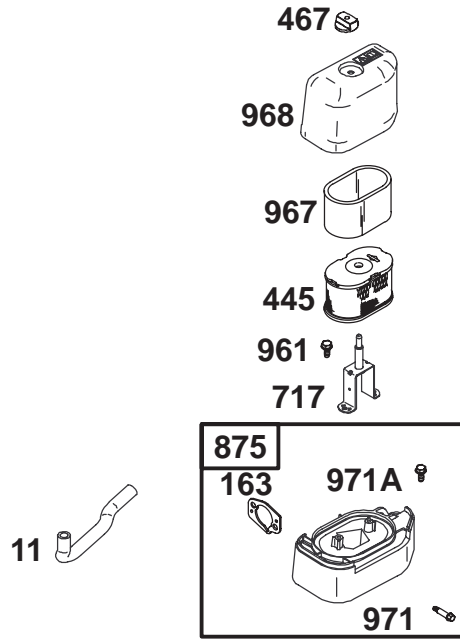
187A 692601 1 Line-Fuel

Δ Included in Valve Gasket Set-Ref. 1095.

★ Included in Engine Gasket Set-Ref. 358.

● Included in Carburetor Overhaul Kit-Ref. 121.

◆ Included in Carburetor Gasket Set-Ref. 977.



Assemblies include all parts shown in frames.

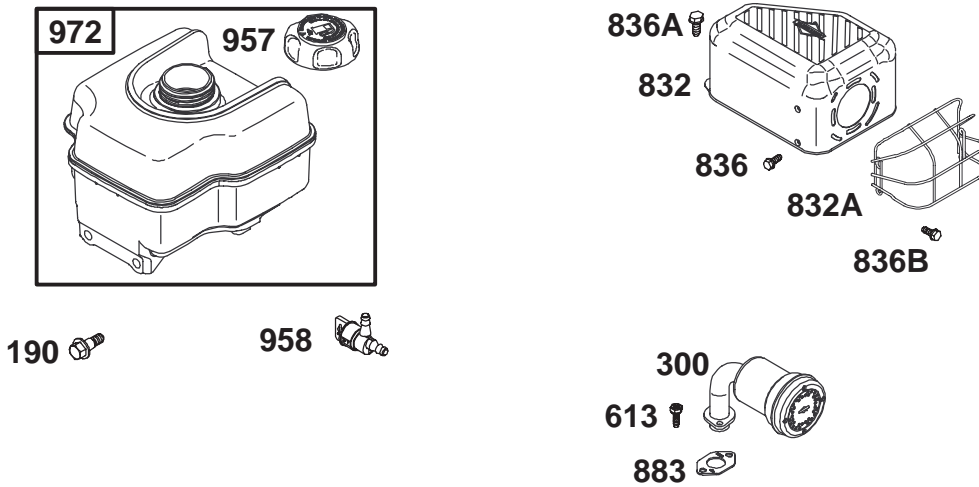
Air Cleaner Assembly Engine Briggs and Stratton Model 126402-0245-E1

Ref. No.	Part No.	Qty.	Description
11	693647	1	Breather Tube
★◆163	696979	1	Air Cleaner Gasket
445	697029	1	Air Cleaner Cartridge Filter
467	691668	1	Air Cleaner Knob
717	693462	1	Air Cleaner Bracket
875	697030	1	Air Cleaner Base
961	693598	1	Screw (Air Cleaner Bracket)
967	273356	1	Pre Cleaner Filter
968	693460	1	Air Cleaner Cover
971	690349	1	Screw (Air Cleaner Base)
971A	691693	1	Screw (Air Cleaner Base)

Ref. No.	Part No.	Qty.	Description

★ Included in Engine Gasket Set-Ref. 358.
◆ Included in Carburetor Gasket Set-Ref. 977.

● Included in Carburetor Overhaul Kit-Ref. 121.



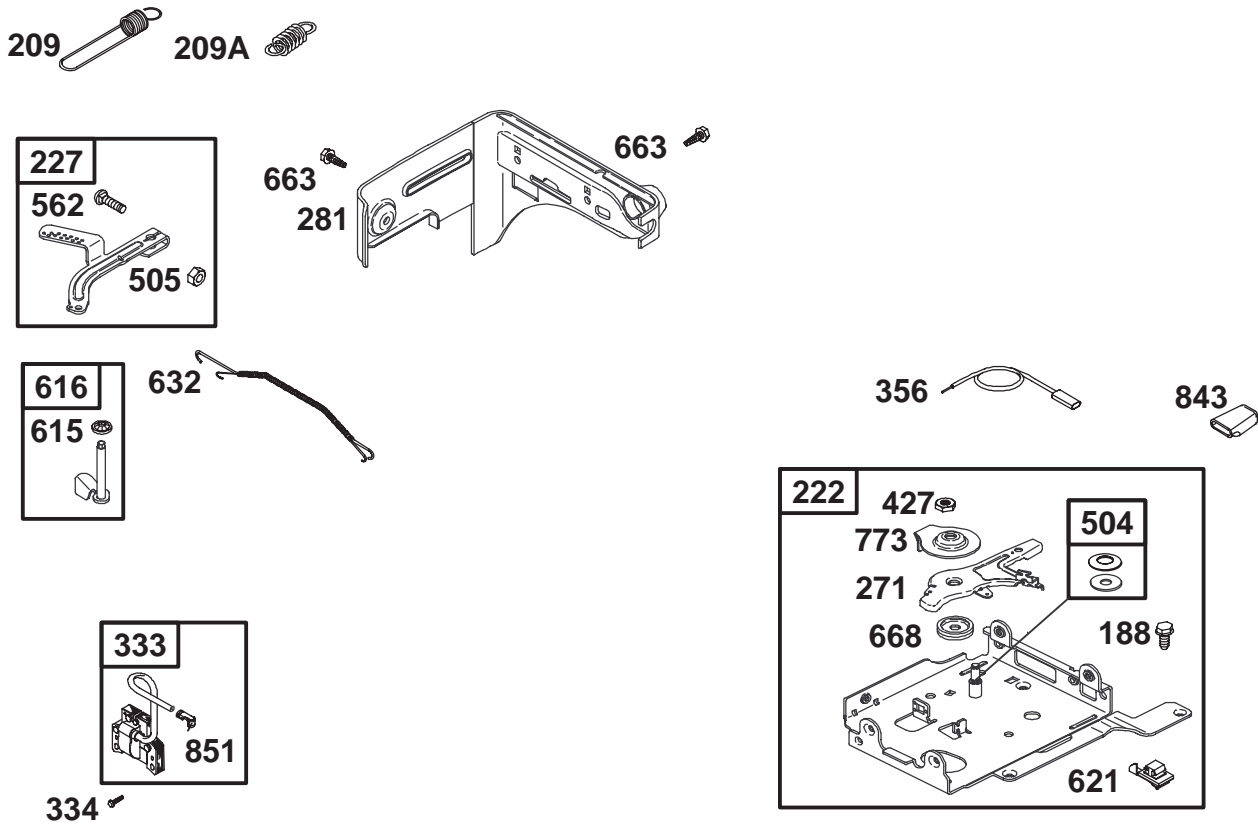
Assemblies include all parts shown in frames.

Muffler and Fuel Tank Assembly Engine Briggs and Stratton Model 126402-0245-E1

Ref. No.	Part No.	Qty.	Description
300	693593	1	Muffler
190	692127	1	Screw (Fuel Tank)
613	691665	1	Screw (Muffler)
832	693583	1	Muffler Guard
832A	696516	1	Muffler Guard
836	690661	1	Screw (Muffler Guard)
836A	693624	1	Screw (Muffler Guard)
836B	696519	1	Screw (Muffler Guard)
★883	691893	1	Exhaust Gasket
957	694261	1	Fuel Tank Cap
958	692586	1	Fuel Shut Off Valve
972	694260	1	Fuel Tank

Ref. No.	Part No.	Qty.	Description

★ Included in Engine Gasket Set-Ref. 358.

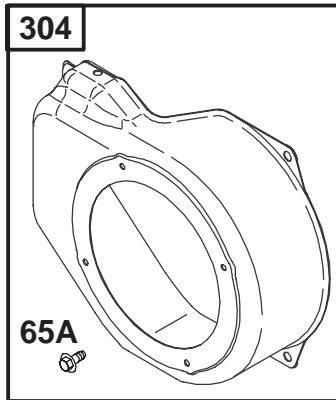
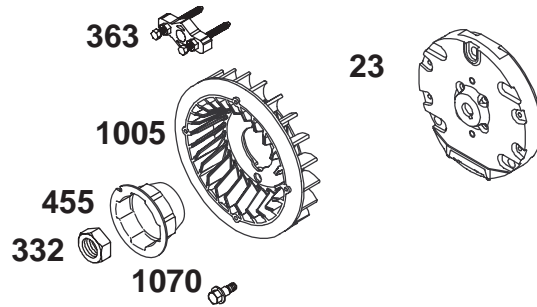


Assemblies include all parts shown in frames.

Governor Assembly Engine Briggs and Stratton Model 126402-0245-E1

Ref. No.	Part No.	Qty.	Description
188	690877	1	Screw (Control Bracket)
209	692571	1	Governor Spring
209A	691278	1	Governor Spring
222	694253	1	Control Bracket
227	692573	1	Governor Control Lever
281	694252	1	Control Panel
333	695711	1	Magneto Armature
334	691061	1	Screw (Magneto Armature)
505	691251	1	Nut (Governor Control Lever)
562	691112	1	Bolt (Governor Control Lever)
615	692576	1	Governor Shaft Retainer
616	692547	1	Governor Crank
632	693408	1	Mechanical Governor Spring/Link
663	694593	1	Screw (Control Panel)

Ref. No.	Part No.	Qty.	Description
851	493880	1	Sparkplug Terminal

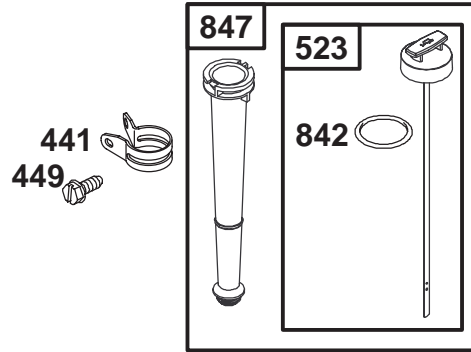


Assemblies include all parts shown in frames.

Blower Housing Assembly Engine Briggs and Stratton Model 126402-0245-E1

Ref. No.	Part No.	Qty.	Description
23	692987	1	Flywheel
65A	692608	1	Screw (Rewind Housing)
304	693621	1	Blower Housing
305	690960	1	Screw (Blower Housing)
332	690662	1	Nut (Flywheel Fan)
363	19069	1	Flywheel Puller
455	692591	1	Flywheel Cup
1005	692592	1	Flywheel Fan
1036	697004	1	Emission Label
1070	692590	1	Screw (Flywheel Fan)

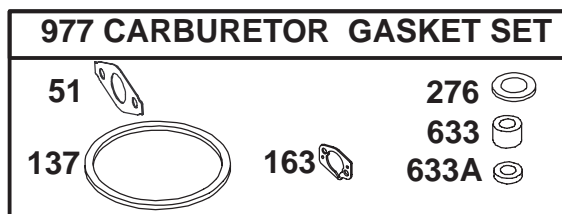
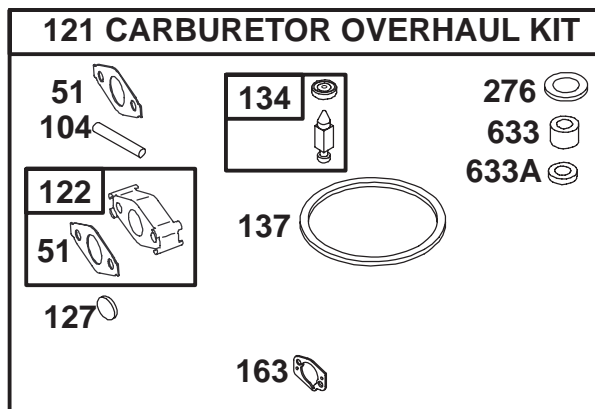
Ref. No.	Part No.	Qty.	Description



Oil Filter, Tube and Pump Assembly Engine Briggs and Stratton Model 126402-0245-E1

Ref. No.	Part No.	Qty.	Description
441	694262	1	Oil Fill Bracket
449	691693	1	Screw (Oil Fill Bracket)
523	693618	1	Dipstick
842	691031	1	O Ring Seal (Dipstick Tube)
847	693617	1	Dipstick/Tube Assembly

Ref. No.	Part No.	Qty.	Description



Assemblies include all parts shown in frames.

Carburetor Overhaul Kit Assembly Engine Briggs and Stratton Model 126402-0245-E1

Ref. No.	Part No.	Qty.	Description
★△◆51	692555	1	Intake Gasket
●104	691242	1	Float Hinge Pin
121	696998	1	Carburetor Overhaul Kit
★●122	693749	1	Carburetor Spacer
●127	691739	1	Welch Plug
●134	398188	1	Needle/Seat Kit
◆137	693981	1	Float Bowl Gasket
★◆163	696979	1	Air Cleaner Gasket
◆276	271716	1	Sealing Washer
◆633	693867	1	Choke/Throttle Shaft Seal
◆633A	691321	1	Choke/Throttle Shaft Seal
977	697001	1	Carburetor Gasket Set

Ref. No.	Part No.	Qty.	Description

△ Included in Valve Gasket Set-Ref. 1095.
★ Included in Engine Gasket Set-Ref. 358.

● Included in Carburetor Overhaul Kit-Ref. 121.
◆ Included in Carburetor Gasket Set-Ref. 977.

