



Form No. 3467-721 Rev A

CrossTrax® All-Wheel Drive Finishing Kit

2015 and After Reelmaster® 5010-H Series Traction Unit

Model No. 03656

Installation Instructions

These installation instructions are to be used in conjunction with the installation instructions included with the CrossTrax All-Wheel Drive Kit.

When installing the CrossTrax All-Wheel Drive Kit onto a 5010-H Series Traction Unit (Models 03674 or 03950), substitute the following tubes and hose for the similar parts in the kit.

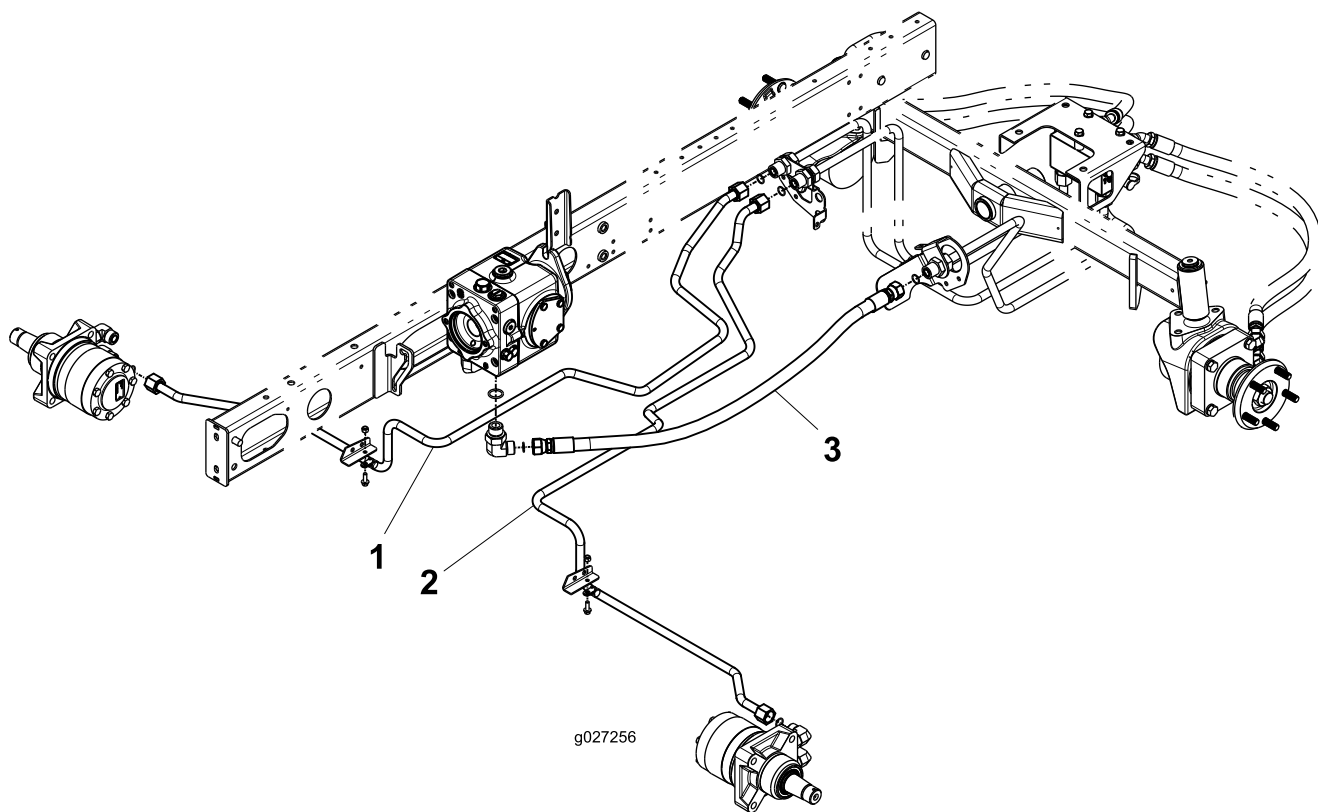


Figure 1

1. Tube 127-2566 replaces tube 108-7622
2. Tube 125-1492 replaces tube 108-7623
3. Hose 125-1526 replaces hose 108-7645

