



Suspension Seat Kit

Z300 Series Z Master®

Part No. 105-1669

Form No. 3328-205 Rev A

Installation Instructions

Loose Parts

Note: Use the chart below to identify parts for assembly.

DESCRIPTION	QTY.	USE
Suspension Seat	1	Installing the seat
Spacer blocks	4	
Bolts	4	
Nuts	4	
Lock washer	4	
No loose parts for this section		Connecting the wire harness

Removing the Existing Seat

1. Tip seat forward and disconnect the wire connector from the seat switch.
2. Remove the 4 bolts holding the existing seat to the seat pan.
3. Remove the existing seat.

Installing the Seat

1. Remove the bolt, spacer, lock washer, and nut from the bottom of the seat (Fig. 1).
2. Position the spacer blocks and seat onto the seat pan (Fig. 1).
3. Install the bolts up into the seat pan, spacer blocks, and the seat (Fig. 1).
4. While holding the bolts, secure the seat with lock washers and nuts (Fig. 1).

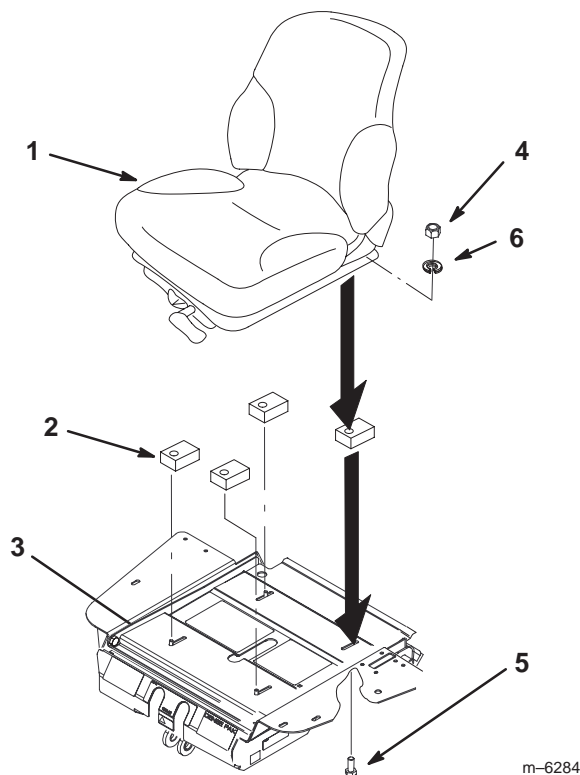


Figure 1

- | | |
|------------------|----------------|
| 1. Seat | 4. Nut |
| 2. Spacer blocks | 5. Bolt |
| 3. Seat pan | 6. Lock washer |

Installing the Wire Harness

1. Locate the existing traction unit wire harness connector that was connected to the old seat switch.
2. Cut the connector off the existing traction unit wire harness (Fig. 2).

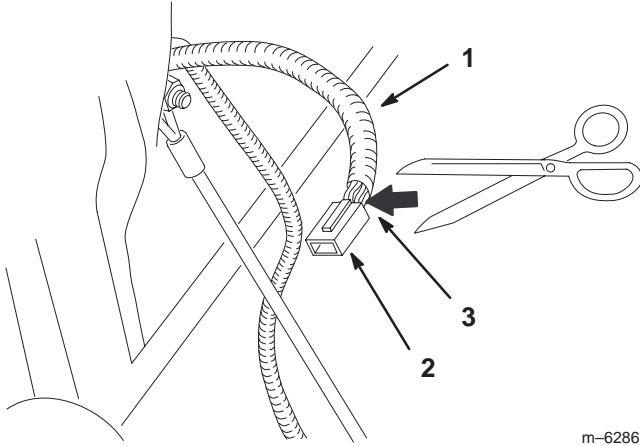


Figure 2

1. Old traction unit wire harness
 2. Connector on old harness
 3. Cut connector off
-
3. Strip approximately 3/8 inch of insulation from the end of each harness wire (Fig. 3).
 4. Plug the two single wires of the old wire harness into the 2 connectors from the new seat switch (Fig. 3).
 5. Crimp the connectors to secure the wires.

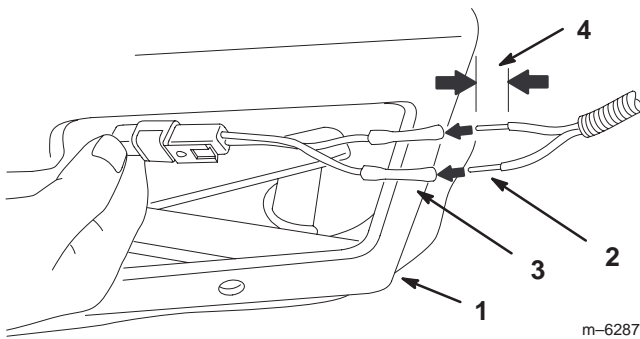


Figure 3

1. New seat
2. Wires from existing traction unit harness
3. Connector from new seat
4. 3/8 inch of exposed wire

Operating the Seat

1. Rotate the seat cushion handle either direction to get the desired suspension (Fig. 4).
2. Use the seat suspension indicator for finding and helping remember correct seat suspension (Fig. 4).

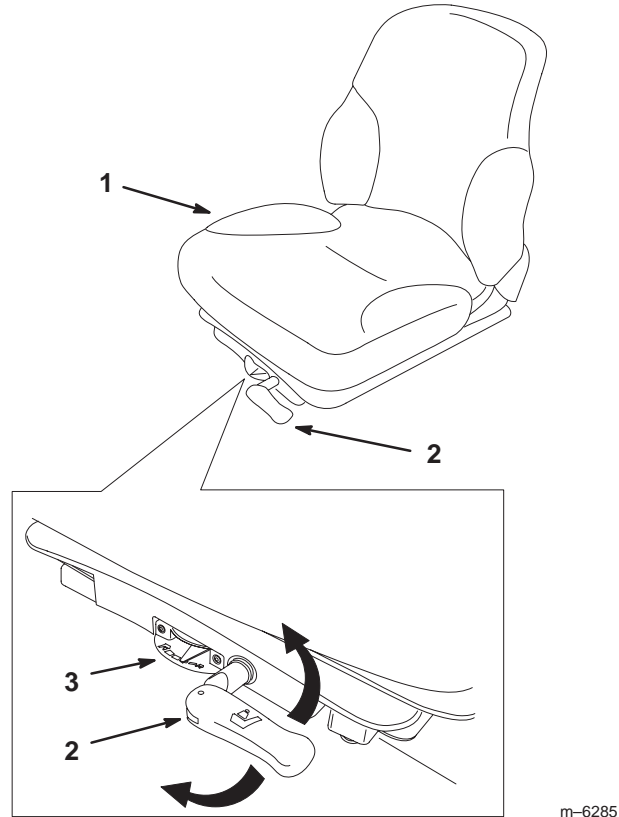


Figure 4

1. Seat
2. Seat cushion handle
3. Seat suspension indicator

Installing the Decal

1. Raise the seat up.
2. Remove the backing off the decal and place the decal on the righthand frame. See Figure 3.

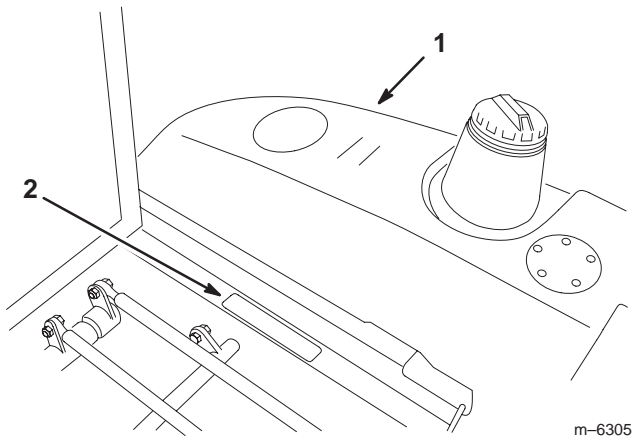


Figure 5

1. Righthand fuel tank
2. Decal

