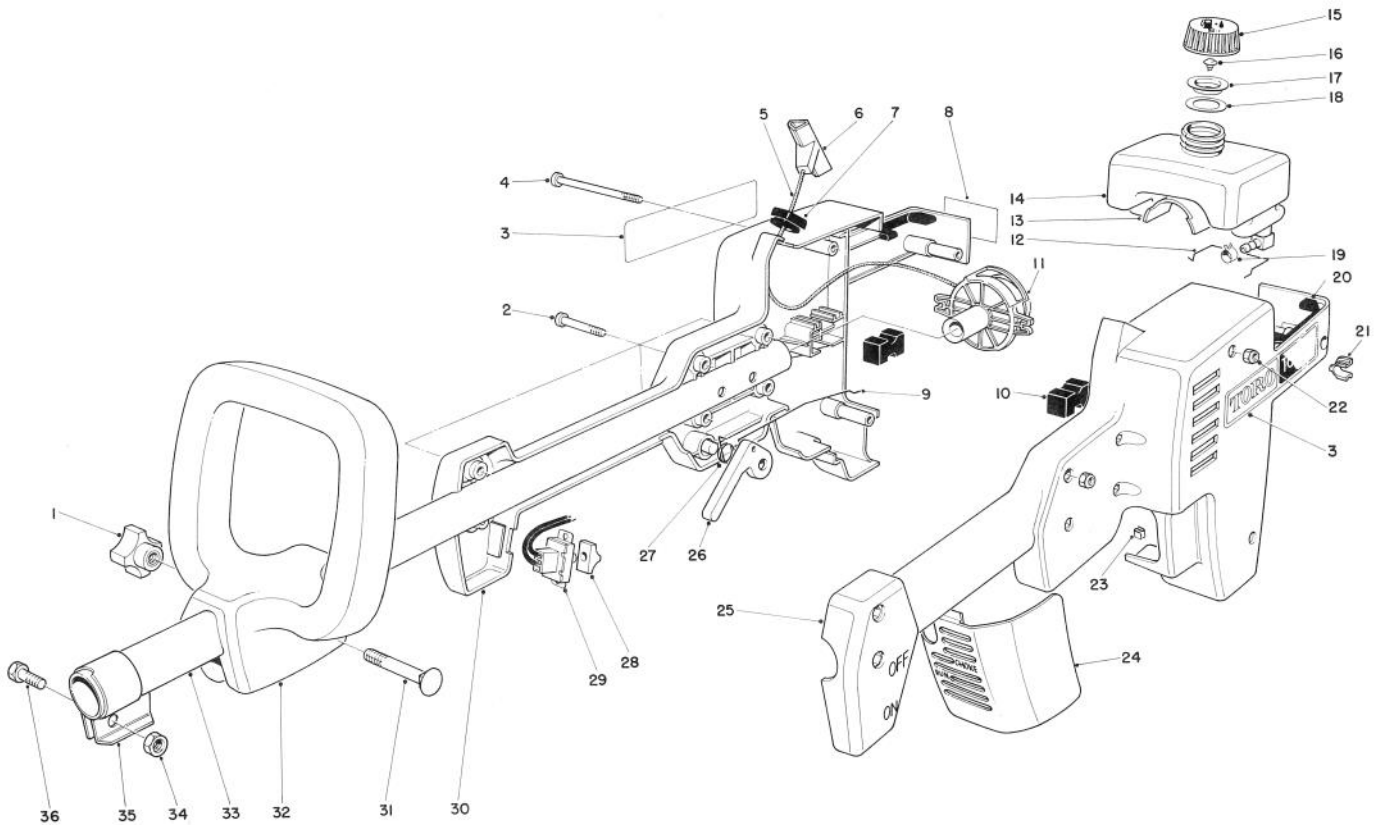




MODEL NO. 51603 – 2000001 &amp; UP

# **PARTS CATALOG**

## **TC 300 GAS TRIMMER**



### **ENGINE HOUSING ASSEMBLY**

Ref. No.	Part No.	Description	No. Used
1	42-5890	Knob	1
2	3250-23	Cross Recess Pan Hd. Machine Screw	6
3	44-6530	Decal – Toro TC300	2
4	3250-22	Cross Recess Pan Hd. Machine Screw	3
5	45-1590	Rope – Starter	1
6	38-6570	Handle – Starter	1
7	45-1580	Bushing – Rope	1
8	42-6250	Decal – Hot Surface	1
9	44-7430	Link – Throttle	1
10	42-5660	Mount – Isolation	4
11	45-0190	Starter Assembly (Incl. Ref. #5-7)	1
12	42-6230	Clip – Crankcase Pad	1

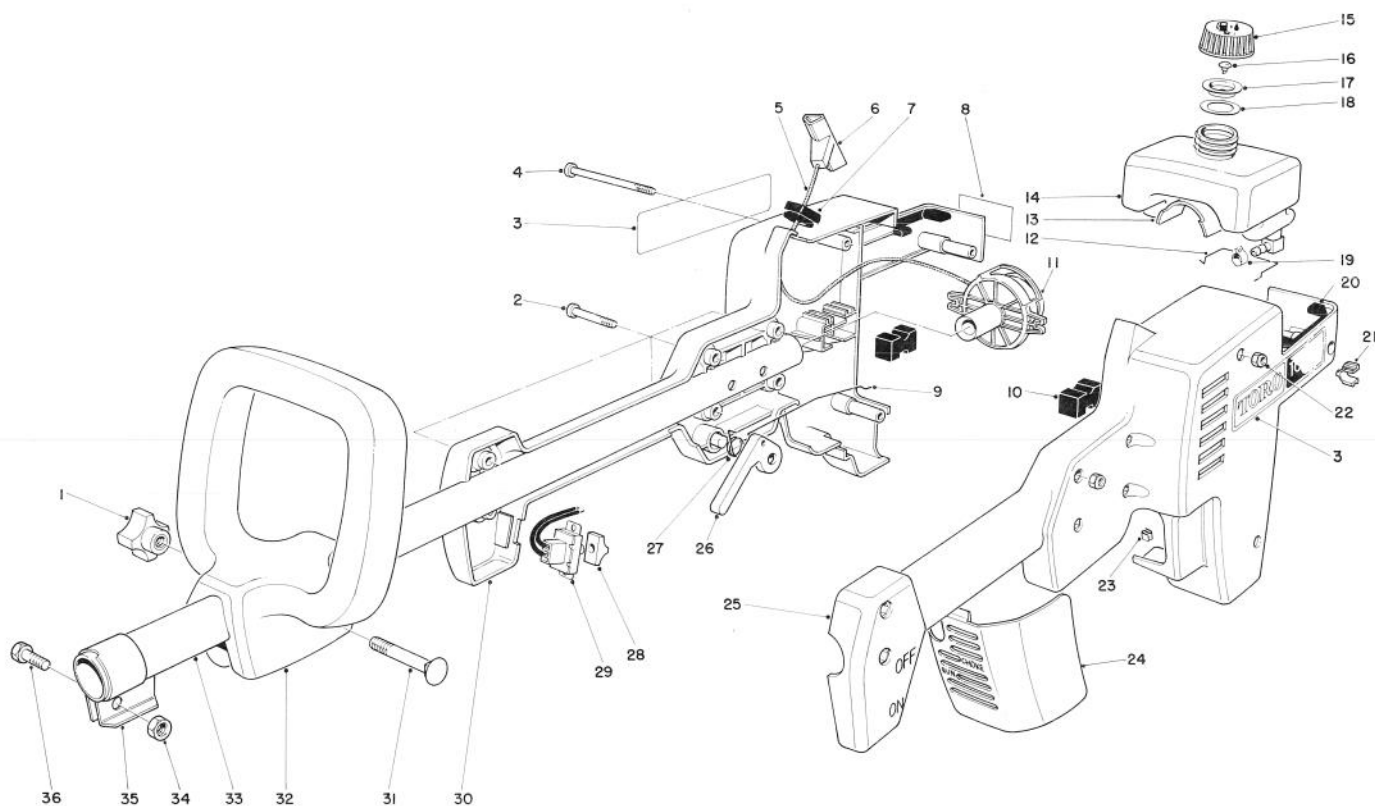
Ref. No.	Part No.	Description	No. Used
13	42-6240	Pad – Crankcase	1
14	42-5600	Tank – Gas	1
15	42-5880	Gas Cap Assembly (Incl. Ref. #16-18)	1
16	42-5760	Valve – Umbrella/Combination	1
17	42-5680	Insert Gas Cap	1
18	42-5910	Gasket – Gas Cap	1
19	2412-80	Clamp – Fuel Line	1
20	42-5590	Bumper – Gas Tank	2
21	42-6040	Grommet	1
22	3296-2	Locknut	9
23	249-32	S-Clip	1
24	44-6720	Cover – Air Cleaner	1
25	44-6520	Housing – Engine L.H.	1
26	42-5630	Lever Throttle	1

COPYRIGHT © ALL RIGHTS RESERVED

The Toro Company – 1982

MINNEAPOLIS, MN 55420 – U.S.A.

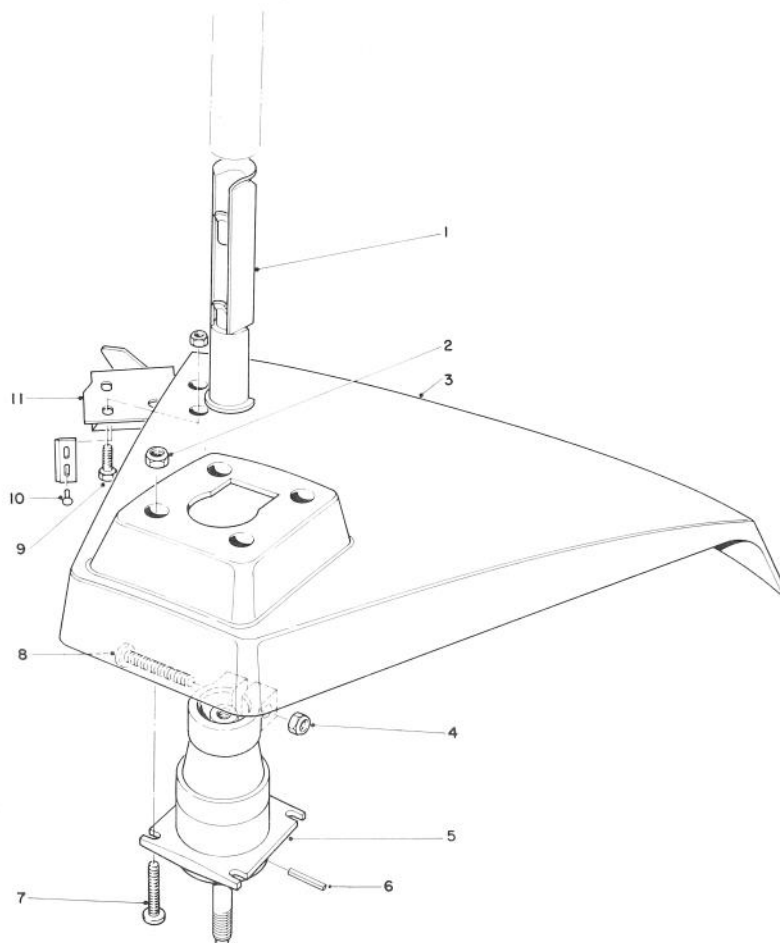
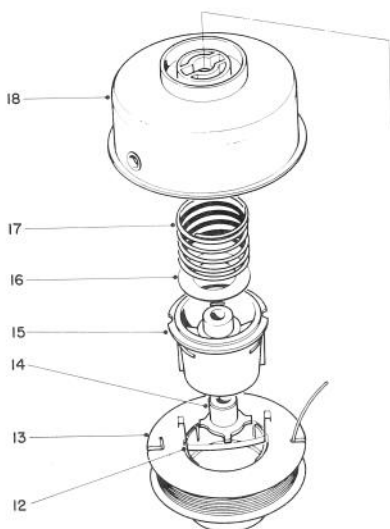
PRICE \$1.00



## ENGINE HOUSING ASSEMBLY (Continued)

Ref. No.	Part No.	Description	No. Used
27	42-5640	Spring — Torsion	1
28	218-507	Cover — Switch	1
29	42-6000	Switch	1
30	11-2279	Housing Engine R.H. (Incl. Ref. #8)	1
31	3-7253	Bolt Carriage	1

Ref. No.	Part No.	Description	No. Used
32	42-5550	Handle — Secondary	1
33	42-5570	Tube — Upper Shaft Housing	1
34	3296-29	Locknut	1
35	42-5830	Clamp — Pole	1
36	322-3	Capscrew	1

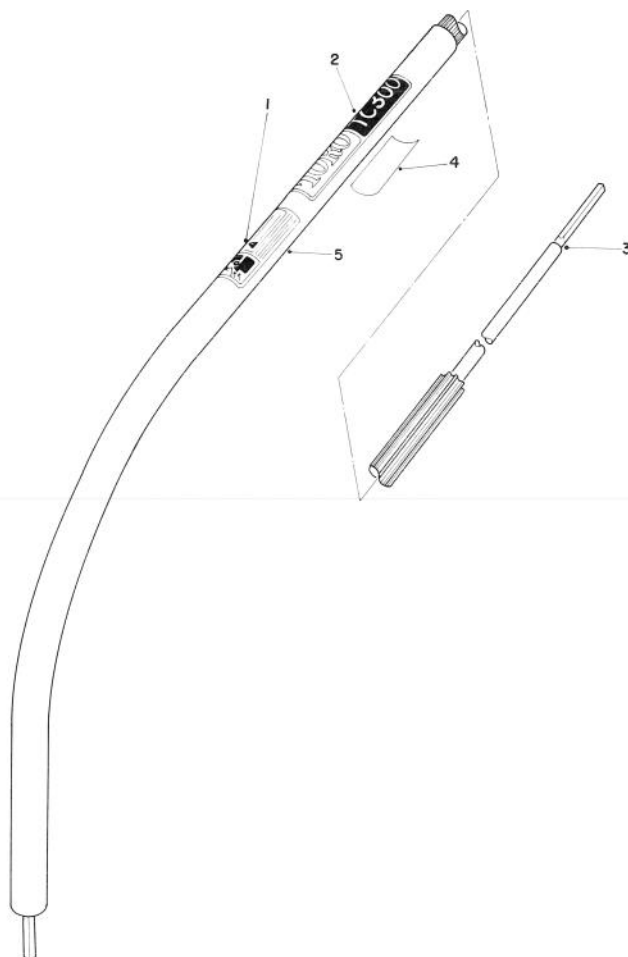


## TRIMMER HEAD ASSEMBLY

Ref. No.	Part No.	Description	No. Used
1	42-5560	Insert — Pole End	1
2	3296-2	Locknut	6
3	42-5540	Shield 14"	1
4	3296-42	Locknut	1
5	42-5930	Bearing Housing Assembly	1
6	32121-95	Pin Coil	1
7	3250-23	Cross Recess Pan Hd. Machine Screw	4
8	3250-24	Slotted Pan Hd. Machine Screw	1
9	3290-321	Hex Washer Hd. Machine Screw	2
10	3290-54	Pop Rivet	2

Ref. No.	Part No.	Description	No. Used
11	42-5920	Knife Blade Assembly (Incl. Ref. #10)	1
12	33-8940	Saddle — Spool Cap	1
13	43-4990	Prewound Spool (.080)	1
*	43-5000	.080 Line 38'	1
*	46-2710	.080 Line 1 lb. 400'	1
14	42-6050	Driver	1
15	33-6230	Spool Core	1
16	3256-42	Washer	1
17	29-7130	Spring — Compression	1
18	42-5950	Drum & Eyelet Assembly	1

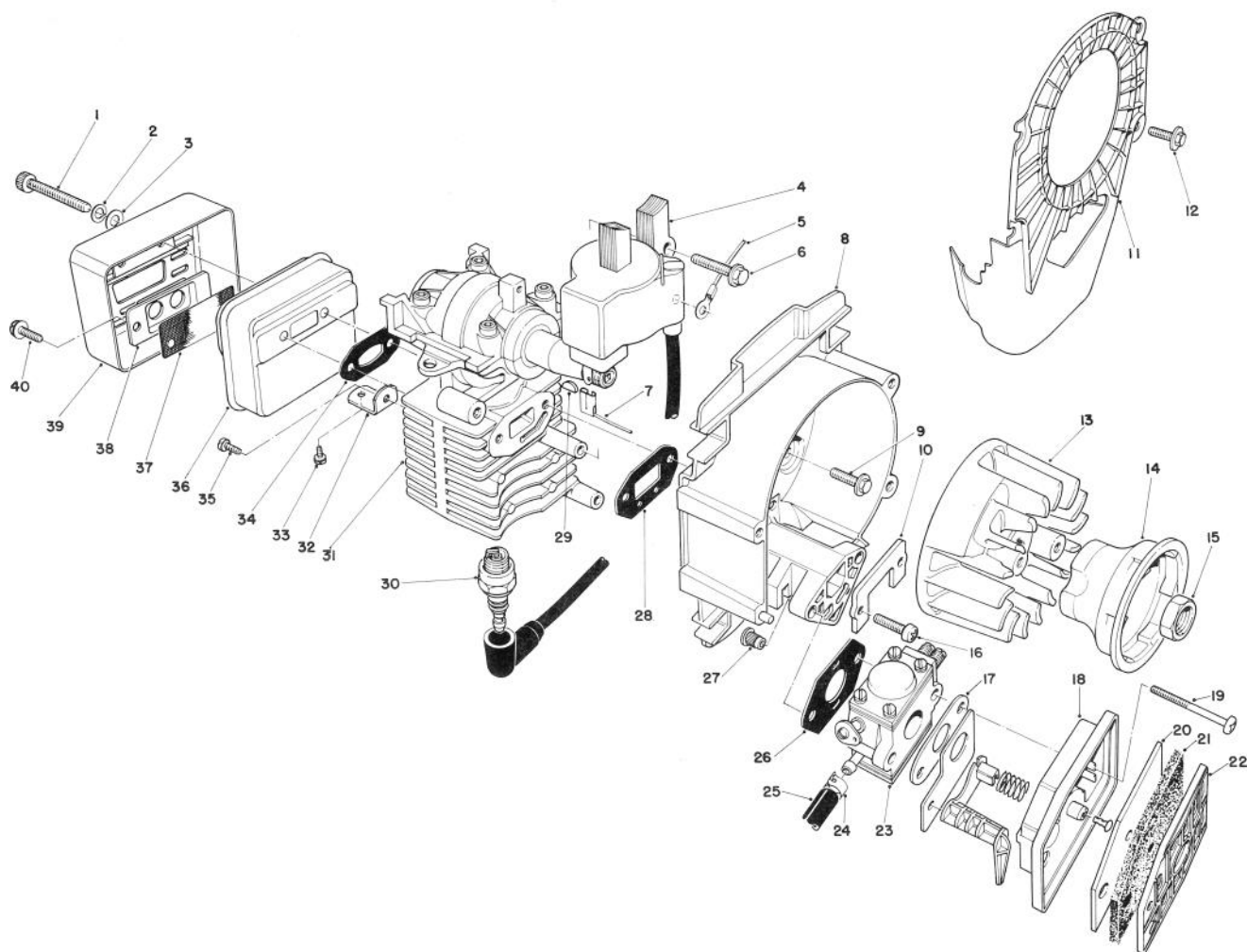
\*Not Illustrated



## SHAFT & TUBE ASSEMBLY

Ref. No.	Part No.	Description	No. Used
1	42-5850	Decal — Caution	1
2	44-6530	Decal — Toro TC 300	1
3	42-5700	Shaft — Flex	1

Ref. No.	Part No.	Description	No. Used
4	34-3270	Replacement Serial Plate	1
5	11-1519	Tube — Lower Shaft Housing (Incl. Ref. #2)	1

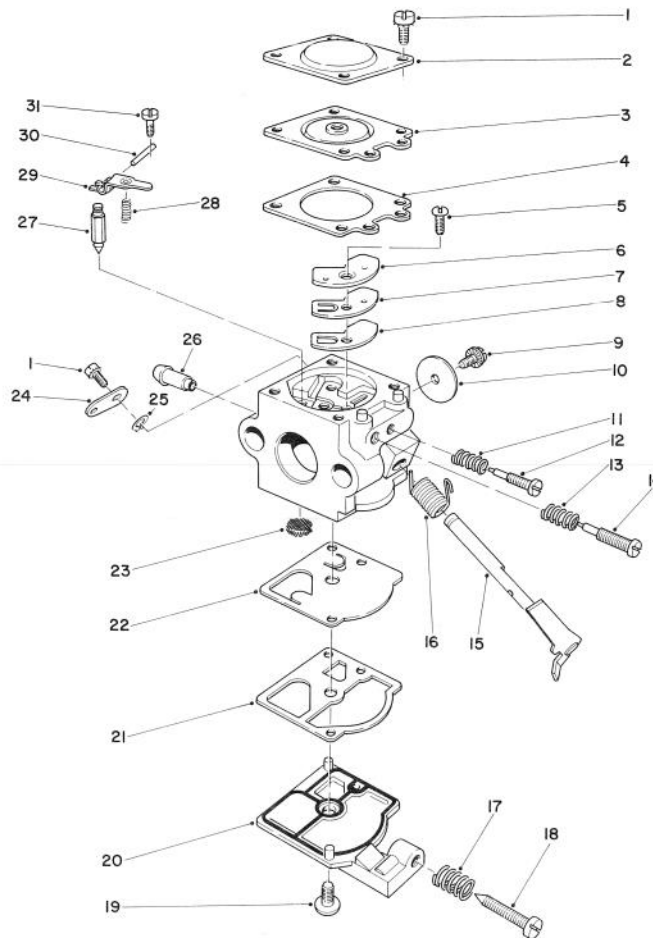


## ENGINE ASSEMBLY

Ref. No.	Part No.	Description	No. Used
1	45-1450	Screw Muffler	2
2	3253-17	Lockwasher	2
3	3256-51	Flatwasher	2
4	45-0230	CDI Module	1
5	45-0610	Wire, Ground/Switch	1
6	45-0640	Screw CDI	2
7	45-0620	Wire, Coil/Switch	1
8	45-2020	Backing Plate Assembly (Incl. Ref. #31)	1
9	45-0710	Screw, Backing Plate	3
10	45-0540	Plate, Stress	1
11	45-1850	Cooling Shroud	1
12	45-0630	Screw, Shroud	3
13	45-0240	Flywheel	1
14	45-0130	Cup, Starter	1
15	3220-5	Nut, Flywheel	1
16	45-0700	Screw, Intake	2
17	45-1910	Gasket, Choke	1
18	45-1980	Choke & Spitback Cup Assembly	1
19	45-1800	Screw, Carburetor	2
20	45-1880 *	Filter, Felt	1
21	45-1890	Filter, Foam	1

Ref. No.	Part No.	Description	No. Used
22	45-1900	Cover, Filter	1
23	45-1840	Carburetor	1
24	2412-80	Clamp, Fuel Line	1
25	45-1920	Hose, Fuel Line	1
26	45-1790	Gasket, Carburetor	1
27	45-2110	Insert Threaded	2
28	45-1960	Gasket, Intake	1
29	45-0470	Key Flywheel	1
30	45-0320	Spark Plug	1
31	45-2210	Short Block	1
32	45-1500	Tab, Heat Shield	1
33	45-1530	Screw, Heat Shield/Tab	1
34	45-1950	Gasket, Exhaust	1
35	45-1280	Screw, Tab Cylinder	1
36	45-1270	Muffler Assembly (Incl. Ref. #37, 38 & 40)	1
37	45-1210	Screen, Spark Arrestor	1
38	45-1190	Plate, Muffler Outlet	1
39	45-1360	Heat Shield, Muffler	1
40	32140-102	Screw, Outlet Plate	1
*	221-723	Engine Complete	1

\*Not Illustrated

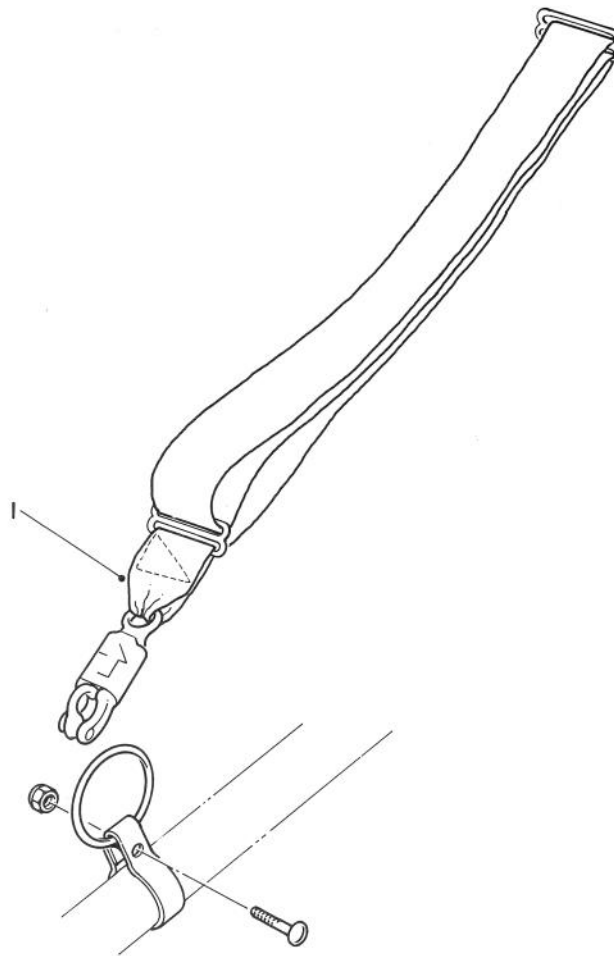


## CARBURETOR ASSEMBLY NO. 45-1840

Ref. No.	Part No.	Description	No. Used
1	41-1070	Screw — Metering Cover & Throttle Lever	5
2	41-1060	Cover — Metering Diaphragm	1
3	41-1050	Diaphragm Assembly — Metering	1
4	41-1040	Gasket — Metering Diaphragm	1
5	41-1110	Screw — Circuit Plate	1
6	41-1100	Plate Assembly — Circuit	1
7	41-1090	Diaphragm — Circuit Check Valve	1
8	41-1080	Gasket — Circuit Plate	1
9	46-4680	Screw — Throttle Valve	1
10	34-6730	Valve — Throttle	1
11	41-0860	Spring — Needle (Idle)	1
12	41-0810	Needle — Idle	1
13	41-0820	Spring — Needle (Hi)	1
14	41-0850	Needle Hi Speed	1
15	46-4660	Shaft Assembly — Throttle	1
16	41-0720	Spring — Throttle Lever	1
17	46-4700	Spring — Idle Screw	1
18	46-4690	Screw — Idle Adjust	1
19	41-0700	Screw — Pump Cover	1
20	46-4650	Cover — Fuel Pump	1

Ref. No.	Part No.	Description	No. Used
21	41-0920	Gasket — Fuel Pump	1
22	41-0710	Diaphragm — Fuel Pump	1
23	46-4720	Screen — Fuel Inlet	1
24	46-4380	Lever — Throttle	1
25	46-4370	Ring — Throttle Retainer	1
26	46-4710	Fitting Fuel Inlet	1
27	41-1010	Valve — Inlet Needle	1
28	34-6790	Spring — Metering Lever	1
29	41-0880	Lever — Metering	1
30	41-1020	Pin — Metering Lever	1
31	41-1030	Screw — Metering Pin	1
*	46-4740	Kit — OEM Repair (Incl. Ref. #1, 5, 9 & 11-14, 16, 23, 27-31)	1
*	46-4750	Kit — KWIK Repair (Incl. Ref. #1, 3-4, 7-9, 21-23 & 27-30)	1
*	41-8040	Kit — Gasket/Diaphragm (Incl. Ref. #3, 4, 8, 7, 21 & 22)	1
*	46-4730	Kit Screen & Clip	1

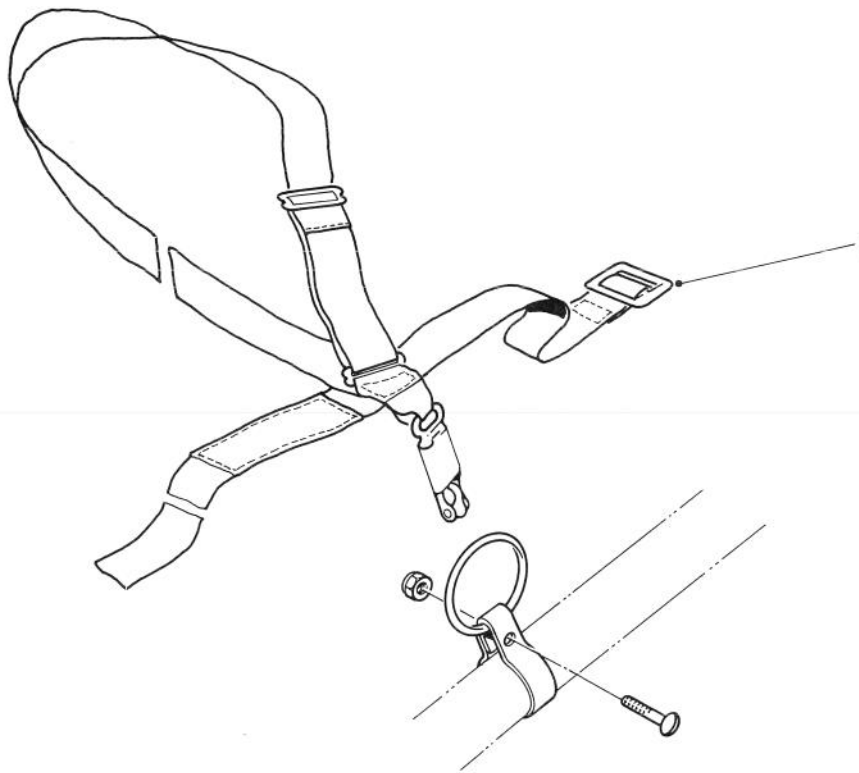
\*Not Illustrated



### STANDARD HARNESS NO. 46-2950 (Optional)

Ref. No.	Part No.	Description	No. Used
1	46-2950	Standard Harness	1

Ref. No.	Part No.	Description	No. Used

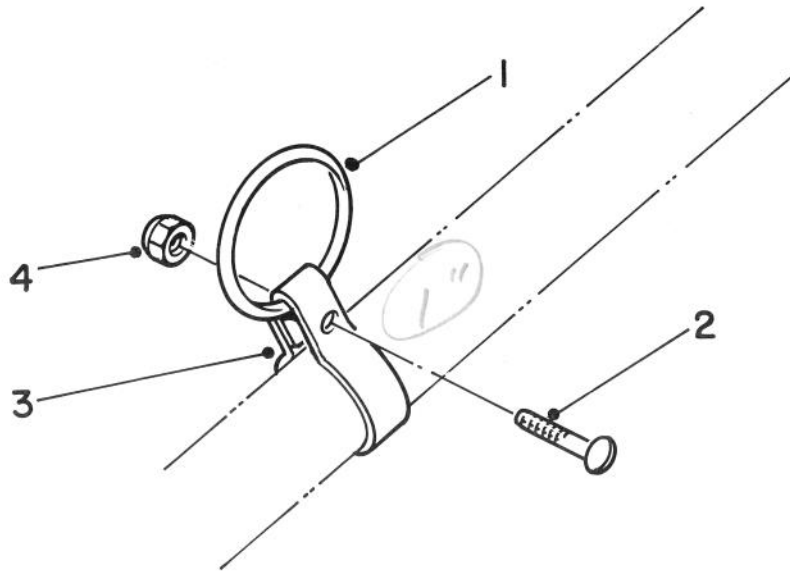


### DELUXE HARNESS NO. 46-2960 (Optional)

Ref. No.	Part No.	Description	No. Used
1	46-2960	Deluxe Harness	1

Ref. No.	Part No.	Description	No. Used





### CLAMP & RING KIT NO. 46-2690 (Optional)

Ref. No.	Part No.	Description	No. Used
1	3251-3	Ring	1
2		Screw	1
3		Clamp	1

Ref. No.	Part No.	Description	No. Used
4	3296-12	Nut	1
*	46-2690	Clamp & Ring Kit (Incl. Ref. #1-4)	1

\*Not Illustrated

## PRODUCT CHANGES

In an effort to make improvements available to TORO owners as quickly as possible, minor changes are incorporated into Toro's products from time to time that do not become immediately shown in the Parts Catalog. If such a change apparently has been made in your unit, which is not reflected in your manual, see your TORO Distributor or his Authorized TORO Service Dealer for information and part numbers.

## IDENTIFICATION AND ORDERING

### MODEL AND SERIAL NUMBERS

The Trimmer has two identification numbers: a model number and a serial number. The two numbers are stamped on a decal which is located on the upper rear of handle shaft. In any correspondence concerning the trimmer, supply model and serial numbers to assure that correct information and replacement parts are obtained.

To order replacement parts from an Authorized TORO Service Dealer, supply the following information:

1. Model and serial numbers of the trimmer.
2. Part number, description, and quantity of part(s) desired.

**Note:** Do not order by reference number if a parts catalog is being used; use the PART NUMBER.

## The Toro Promise

### TORO GAS TRIMMER/WEEDER A ONE YEAR LIMITED WARRANTY

*The Toro Company promises to repair your TORO Product if defective in materials or workmanship. The following time periods from the date of purchase apply:*

Residential Product . . . . .	1 Year
Residential Products Used Commercially . . . . .	45 Days

*The costs of parts and labor are included, but the customer pays the transportation costs. Just return any residential product to an Authorized TORO Service Dealer or TORO Distributor.*

Should you feel your TORO Product is defective and wish to rely on The Toro Promise, the following procedure is recommended:

1. Contact any Authorized TORO Service Dealer, TORO Master Service Dealer, or TORO Distributor (the Yellow Pages of your telephone directory is a good reference source).
2. He will either instruct you to return the product to him or recommend another Authorized TORO Service outlet which might be more convenient.
3. Bring the product along with your original sales slip, or other evidence of purchase date, to the service dealer.
4. The servicing dealer will inspect the unit, advise you whether the product is defective and, if so, make all repairs necessary to correct the defect without extra charge to you.

If for any reason you are dissatisfied with the dealer's analysis of the defect or the service performed, you may contact us.

Write:

TORO Consumer Service Department  
8111 Lyndale Avenue South  
Minneapolis, Minnesota 55420

The above remedy of product defects through repair by an Authorized TORO Service Dealer is the purchaser's sole remedy for any defect.

THERE IS NO OTHER EXPRESS WARRANTY. ALL IMPLIED WARRANTIES OF MERCHANTABILITY AND

FITNESS FOR USE ARE LIMITED TO THE DURATION OF THE EXPRESS WARRANTY.

Some states do not allow limitations on how long an implied warranty lasts, so the above limitation may not apply to you.

This warranty applies only to parts or components which are defective and does not cover repairs necessary due to normal wear, misuse, accidents, or lack of proper maintenance. Regular, routine maintenance of the unit to keep it in proper operating condition is the responsibility of the owner.

All warranty repairs reimbursable under The Toro Promise must be performed by an Authorized TORO Service Dealer using Toro approved replacement parts.

Repairs or attempted repairs by anyone other than an Authorized TORO Service Account are not reimbursable under The Toro Promise. In addition, these unauthorized repair attempts may result in additional malfunctions, the correction of which is not covered by warranty.

THE TORO COMPANY IS NOT LIABLE FOR INDIRECT, INCIDENTAL OR CONSEQUENTIAL DAMAGES IN CONNECTION WITH THE USE OF THE PRODUCT INCLUDING ANY COST OR EXPENSE OF PROVIDING SUBSTITUTE EQUIPMENT OR SERVICE DURING PERIODS OF MALFUNCTION OR NON-USE.

Some states do not allow the exclusion or limitation of incidental or consequential damages, so the above limitation or exclusion may not apply to you.

This warranty gives you specific legal rights, and you may also have other rights which vary from state to state.

## COUNTRIES OTHER THAN THE UNITED STATES OR CANADA

Customers who have purchased TORO products exported from the United States or Canada should contact their TORO Distributor (Dealer) to obtain guarantee policies for your country, province or state. If for any reason

you are dissatisfied with your Distributor's service or have difficulty obtaining guarantee information, contact the TORO importer. If all other remedies fail, you may contact us at The Toro Company.

[illegible]

## MAINTENANCE RECORD

[illegible]