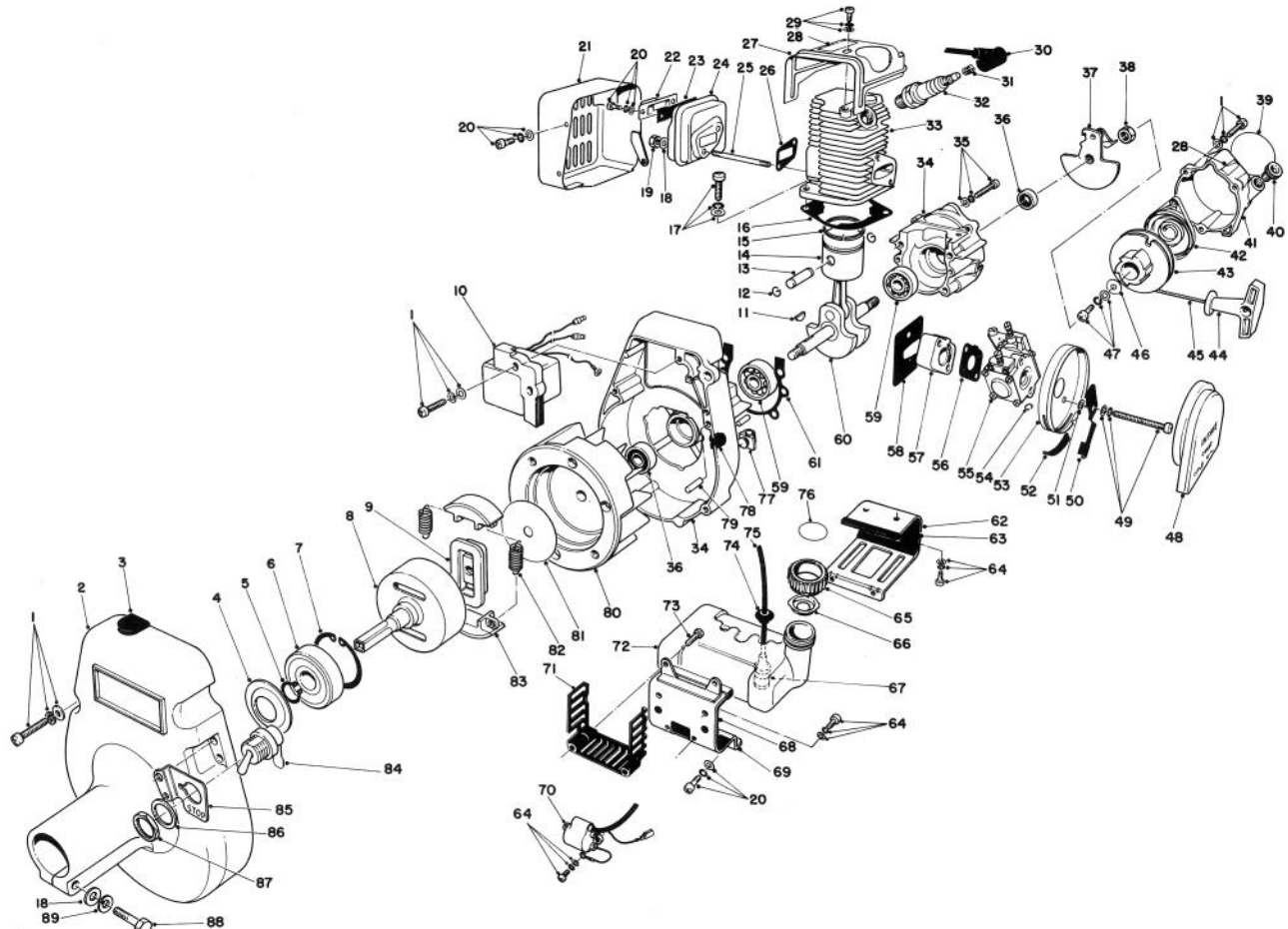


TORO®

MODEL NO. 51607-2000001 & UP

PARTS CATALOG

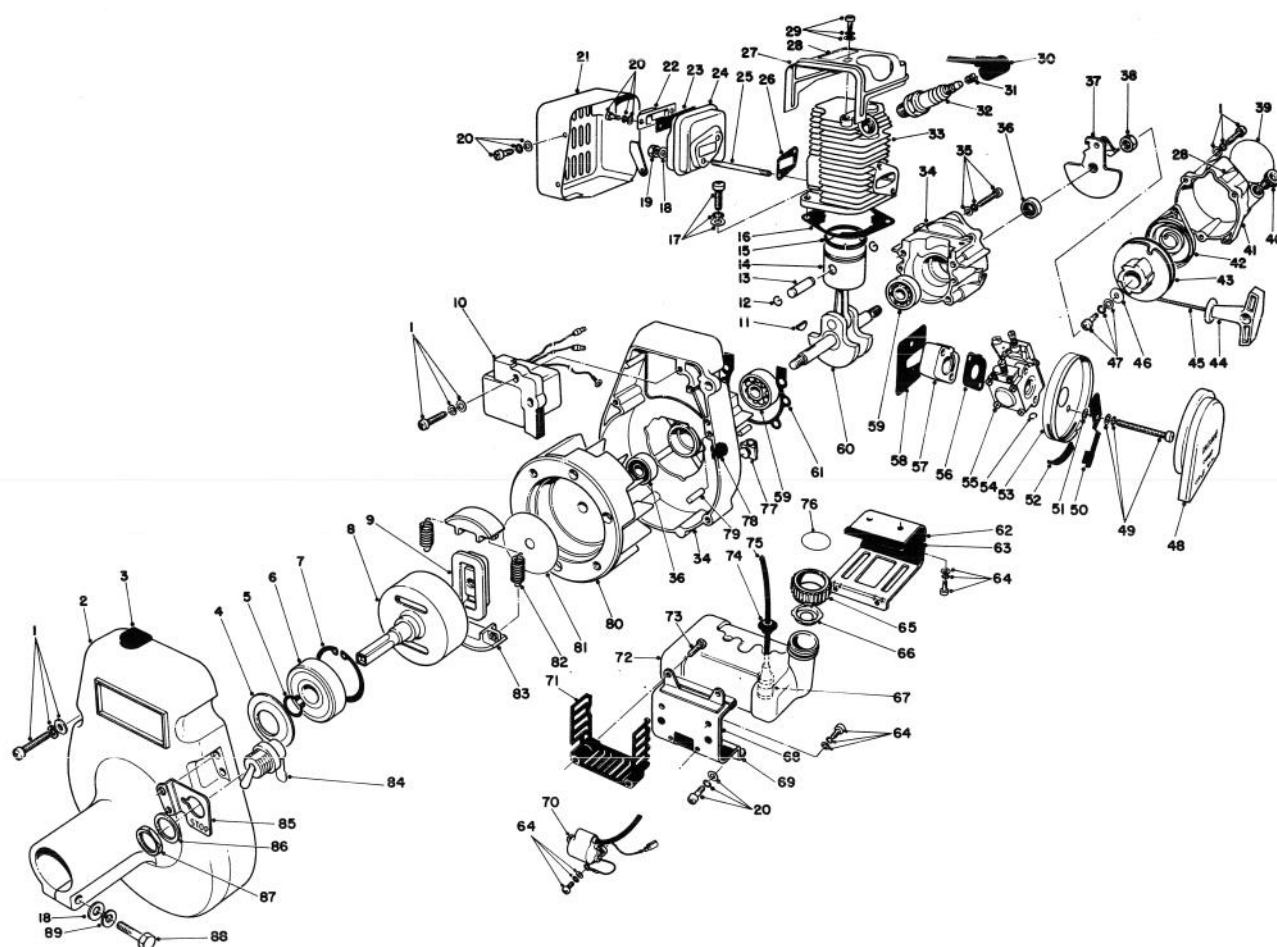
TC 700 GAS TRIMMER



ENGINE ASSEMBLY

Ref. No.	Part No.	Description	No. Used
1	41-5170	Screw with Washer & Lockwasher	9
2	46-4020	Fan Cover	1
3	46-4010	Plug	1
4	34-7810	Stopper	1
5	41-5550	Retaining Ring	1
6	43-9820	Ball Bearing	1
7	41-5580	Retaining Ring	1
8	34-7740	Clutch Drum	1
9	43-9810	Clutch Boss	1
10	46-4000	Ignition Module	1
11	41-6160	Woodruff Key	1
12	41-0160	Circlip, Piston Pin	2
13	46-3830	Piston Pin	1
14	43-9320	Piston	1

Ref. No.	Part No.	Description	No. Used
15	41-0070	Piston Ring	1
16	43-9340	Gasket, Cylinder Base	1
17	41-5290	Screw with Washer & Lockwasher	2
18	41-5440	Washer	3
19	46-3840	Locknut	2
20	41-5160	Screw with Washer & Lockwasher	4
21	43-9450	Muffler Cover	1
22	43-9440	Lid - Muffler	1
23	43-9430	Screen	1
24	43-9420	Muffler Body	1
25	43-9390	Stud Bolt	2
26	43-9410	Gasket, Muffler	1
27	43-9370	Cylinder Cover	1

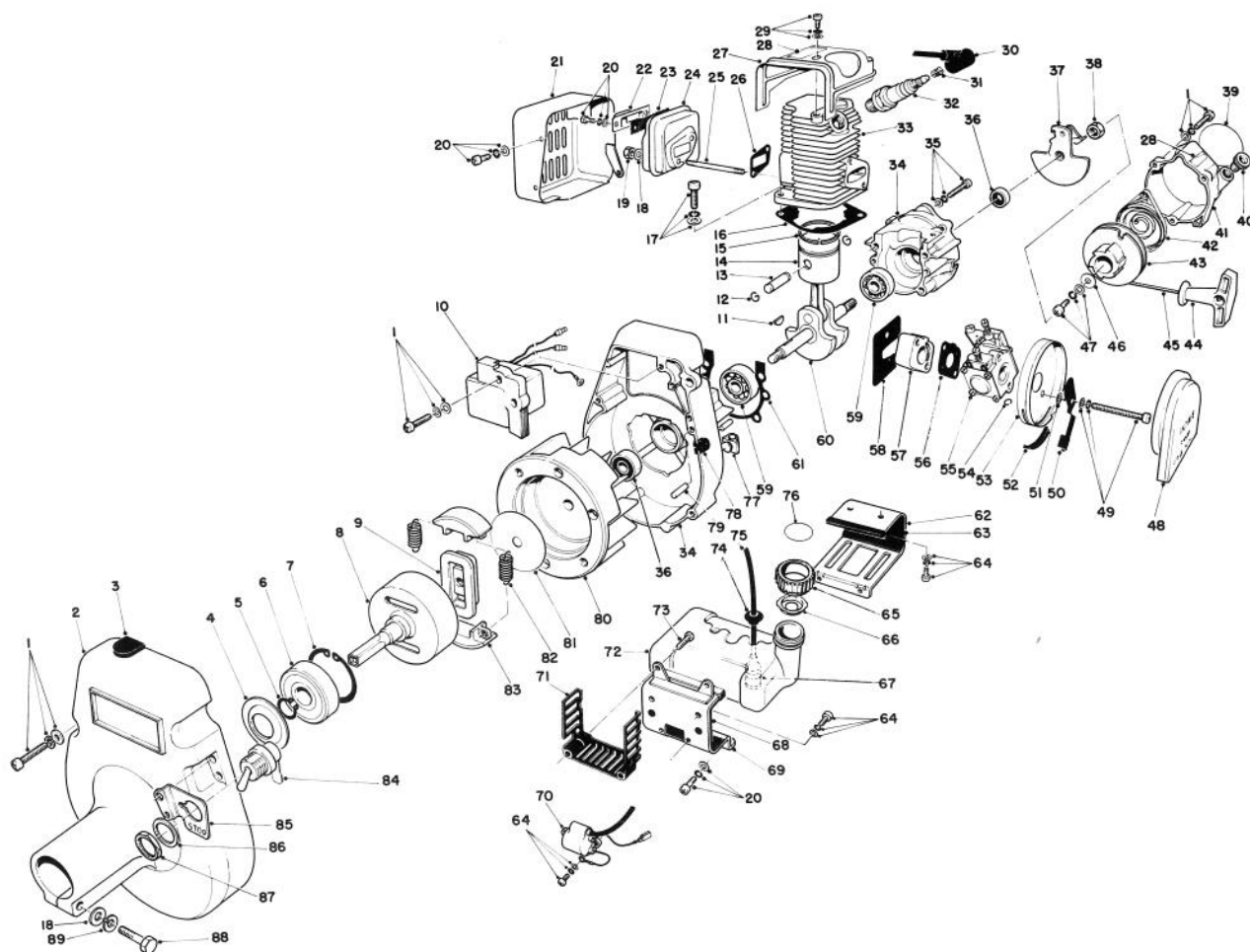


ENGINE ASSEMBLY (Continued)

Ref. No.	Part No.	Description	No. Used
28	42-6210	Decal — Hot Surface	2
29	41-5190	Screw with Washer & Lockwasher	1
30	41-2520	Cap — Spark Plug	1
31	41-2510	Coil Spring — Plug Cap	1
32†		Spark Plug (CJ-8)	1
33	43-9350	Cylinder	1
34	46-3800	Crankcase Set	1
35	41-5260	Screw with Washer & Lockwasher	4
36	43-9290	Oil Seal	2
37	43-9510	Ratchet Assembly	1
38	41-5390	Nut	1
39	33-8340	Decal	1
40	46-3870	Rope Guide	1
41	46-3880	Starter Case	1
42	34-7900	Rewind Spring	1
43	43-9540	Recoil Drum	1
44	34-7930	Starter Handle	1
45	34-7910	Starter Rope	1
46	46-3860	Washer	1
47	41-5150	Screw with Lockwasher	1
48	46-3960	Air Filter	1

Ref. No.	Part No.	Description	No. Used
49	34-8610	Screw with Washer & Lockwasher	2
50	43-9720	Choke Shutter	1
51	41-3610	Spacer	1
52	43-9710	Grommet	1
53	43-9700	Case — Air Cleaner	1
54	46-3950	Clip — Fuel Pipe	1
55	46-3940	Carburetor Assembly	1
56	46-3930	Gasket	1
57	43-9610	Insulator	1
58	46-3920	Gasket	1
59	41-5670	Bearing	2
60	46-3790	Crankshaft Assembly	1
*	43-9240	Needle Bearing (Incl. with Ref. #60)	1
*	43-9250	Spacer — Piston Pin (Incl. with Ref. #60)	1
61	43-9200	Gasket — Crankcase	1
62	43-9560	Bracket — Fuel Tank	1
63	43-9670	Cushion	1
64	34-8520	Screw with Washer & Lockwasher	4
65	41-1630	Cap — Fuel Tank	1

*Not Illustrated
†Obtain Locally

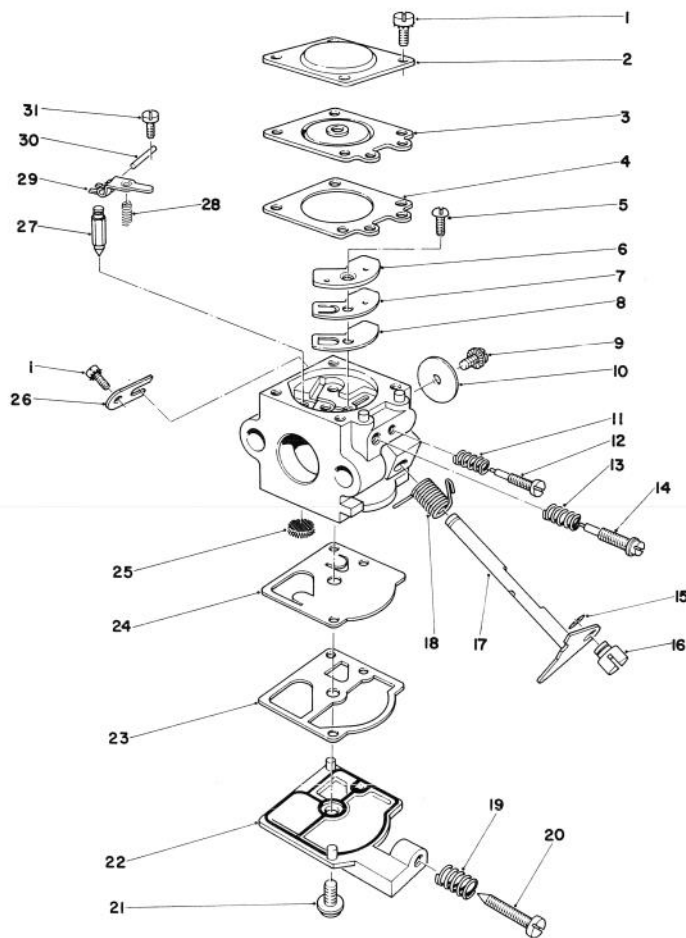


ENGINE ASSEMBLY (Continued)

Ref. No.	Part No.	Description	No. Used
66	46-3910	Check Valve	1
67	43-9660	Fuel Strainer	1
68	43-9260	Cushion	1
69	46-3820	Bracket — Fuel Tank	1
70	46-3980	Ignition Coil	1
71	43-9380	Dust Filter	1
72	43-9590	Fuel Tank	1
73	34-8630	Self Tapping Screw	2
74	41-1880	Grommet	1
75	41-1820	Fuel Pipe	1
76	46-3900	Decal Fuel Mix	1
77	46-3970	Cord Holder	1
78	46-3810	Grommet	1
79	41-0330	Pin — Knock	4

Ref. No.	Part No.	Description	No. Used
80	46-3990	Flywheel	1
81	43-9780	Side Plate	1
82	41-2790	Clutch Spring	2
83	41-2710	Clutch Shoe	2
84	43-9850	Switch (Incl. Ref. #86 & 87)	1
85	43-9870	Bracket — Switch	1
86		Washer	1
87		Nut	1
88	43-9860	Bolt	1
89	41-5490	Lockwasher	1
*	43-9400	Muffler Assembly	1
*	46-3850	Recoil Starter Assembly	1
*	43-9940	Cap Assembly — Fuel Tank	1
*	41-6810	Tool Kit, Optional	1

*Not Illustrated

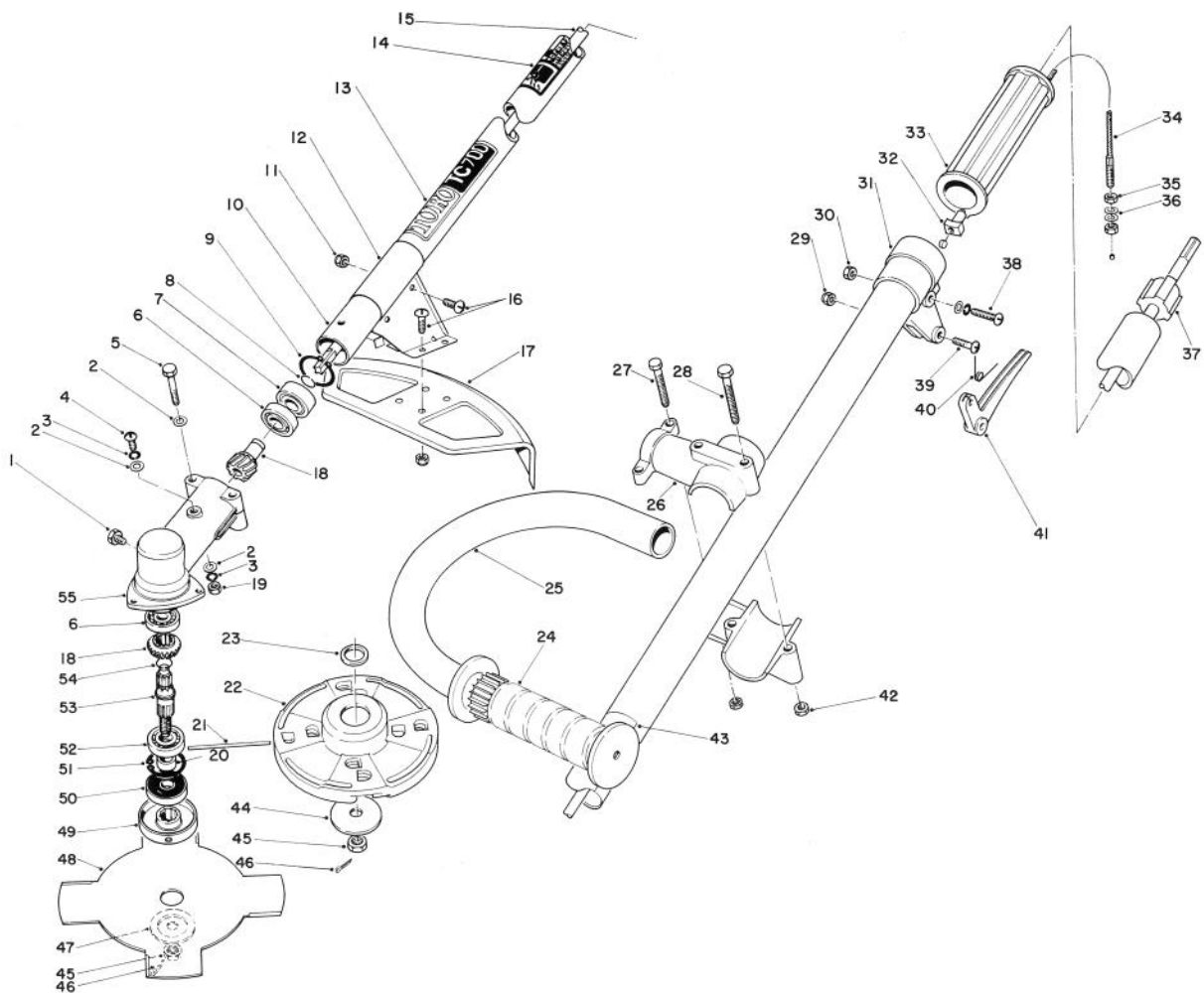


CARBURETOR ASSEMBLY

Ref. No.	Part No.	Description	No. Used
1	41-1070	Screw	5
2	41-1060	Cover, Diaphragm	1
3	41-1050	Diaphragm, Metering	1
4	41-1040	Gasket, Diaphragm	1
5	41-1110	Screw, Circuit Plate	1
6	41-1100	Plate, Circuit	1
7	41-1090	Diaphragm, Circuit Plate	1
8	41-1080	Gasket, Circuit Plate	1
9	41-0730	Screw, Throttle	1
10	41-0750	Valve, Throttle	1
11	41-0860	Spring, Needle — Idle	1
12	43-9900	Idle Needle	1
13	41-0820	Spring High Speed Needle	1
14	41-0850	High Speed Needle	1
15	41-0950	Clip	1
16	41-1120	Swivel	1
17	41-0770	Throttle Shaft	1

Ref. No.	Part No.	Description	No. Used
18	41-0720	Spring, Throttle Return	1
19	41-0970	Spring, Idle Adjust Screw	1
20	41-0990	Screw, Idle Adjust	1
21	41-0700	Screw, Fuel Pump	1
22	46-4240	Cover, Fuel Pump	1
23	41-0920	Gasket, Fuel Pump	1
24	41-0710	Diaphragm, Fuel Pump	1
25	41-0930	Screen, Inlet	1
26	41-0940	Clip, Throttle Shaft	1
27	41-1010	Valve, Inlet Needle	1
28	41-0870	Spring, Metering Lever	1
29	41-0880	Lever Metering	1
30	41-1020	Pin, Metering Lever	1
31	41-1030	Screw Metering Lever Pin	1
*	46-3940	Carburetor Assembly (Incl. Ref. #1-31)	1

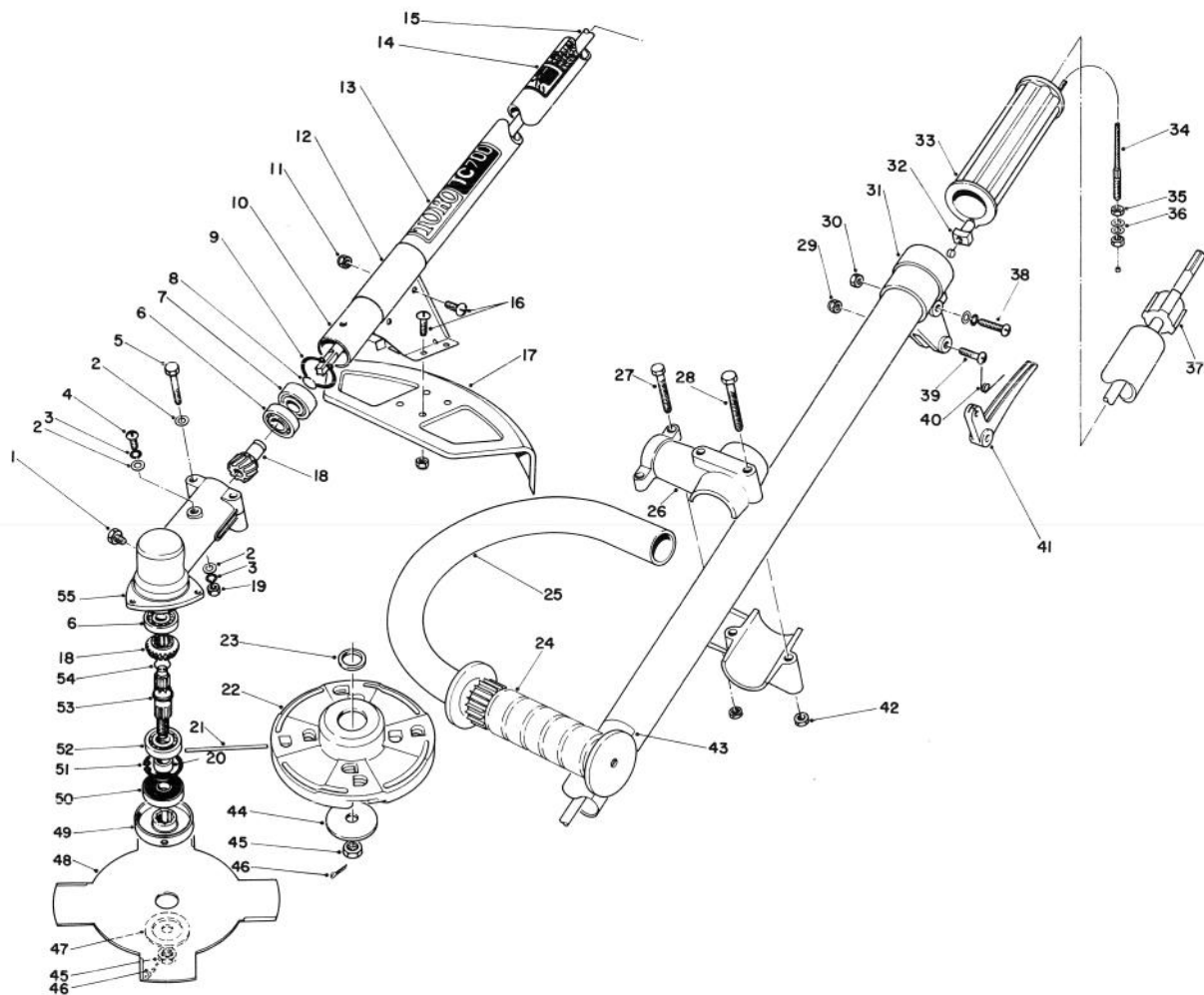
*Not Illustrated



HANDLE ASSEMBLY

Ref. No.	Part No.	Description	No. Used	Ref. No.	Part No.	Description	No. Used
1	46-4140	Bolt	1	*	46-2730	.105" Line (1 Lb. Pkg. 235 Ft.) Optional	1
2	41-5440	Washer	5	*	46-2740	.130" Line (3 Lb. Pkg. 450 Ft.) Optional	1
3	41-5490	Spring Washer	3	22	46-2810	Cutter Head (Incl. #23)	1
4	41-5080	Screw	1	23	44-6950	Spacer — Cutter Head	1
5	46-4150	Bolt	2	24	235-24	Hand Grip	1
6	46-4130	Ball Bearing	2	25	44-7530	Tube — "J" Handle	1
7	46-4120	Ball Bearing	1	26	44-7520	Clamp — "J" Handle	2
8	46-4110	Circlip	1	27	3251-13	Screw — Machine Rd. Hd.	2
9	46-4100	Circlip	1	28	3251-10	Screw — Machine Rd. Hd.	2
10	46-4040	Housing Assembly	1	29	41-4250	Nut	1
11	3296-12	Locknut	6	30	41-5350	Nut	1
12	44-9880	Bracket — Shield	1	31	46-4080	Bracket, Trigger	1
13	44-6710	Decal — TC 700	1	32	41-3440	Spacer	1
14	44-9950	Decal	1	33	46-4060	Grip	1
15	46-4030	Shaft — Drive	1	34	46-4070	Throttle Cable	1
16	3251-2	Screw — Machine Rd. Hd.	6	35	41-5380	Nut	2
17	41-4650	Shield	1	36	41-5450	Washer	2
18	46-4160	Gear Set	1	37	46-4050	Bushing	4
19	41-5350	Nut	2	38	41-5260	Screw	1
20	46-4200	Spacer	1	39	41-3460	Screw	1
21	44-6890	Filament Line Pkg. (24 Pcs.)	1	40	41-3430	Spring — Return	1
*	44-9830	.105" Line (100 Pcs.) Optional	1				
*	42-0580	.130" Line (100 Pcs.) Optional	1				

*Not Illustrated

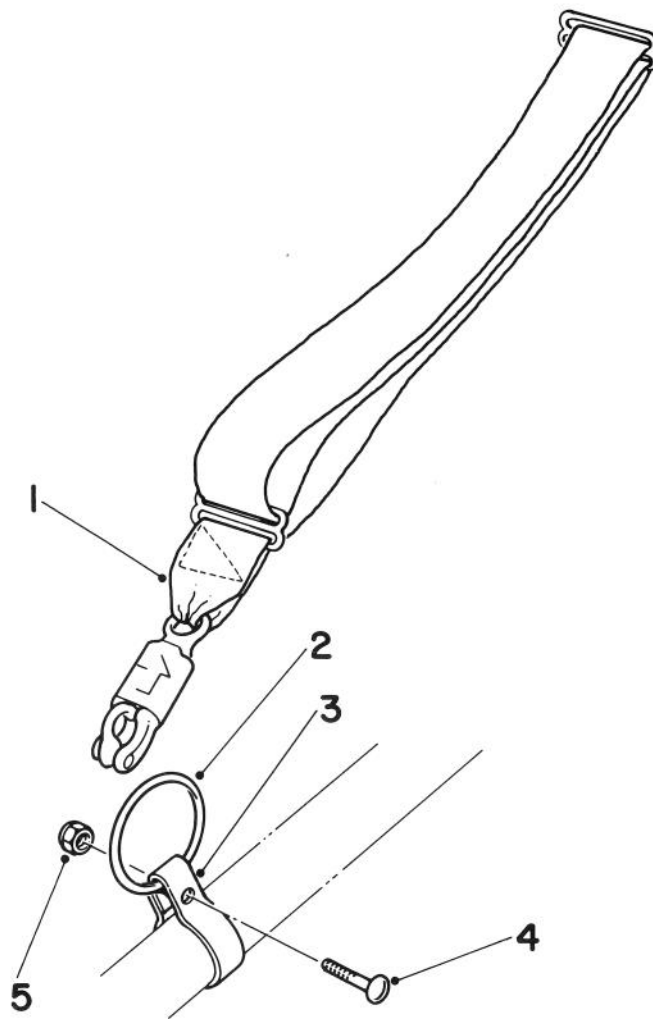


HANDLE ASSEMBLY (Continued)

Ref. No.	Part No.	Description	No. Used
41	41-3350	Throttle — Trigger	1
42	3296-12	Locknut	4
43	42-5850	Decal — Warning	1
44	41-4430	Plate — Washer	1
45	41-5410	Nut	1
46	41-5330	Cotter Pin	1
47	41-4440	Blade Adapter Kit (Incl. Ref. #45 & 46)	1
48	44-9850	Brush Blade	1

Ref. No.	Part No.	Description	No. Used
49	46-2320	Plate — Blade Fixing	1
50	46-4210	Oil Seal	1
51	41-5580	Circlip	1
52	41-5660	Ball Bearing	1
53	46-4190	Shaft — P.T.O.	1
54	46-4180	Circlip	1
55	46-4170	Gear Housing	1
*	46-4090	Gear Housing Assembly	1

*Not Illustrated

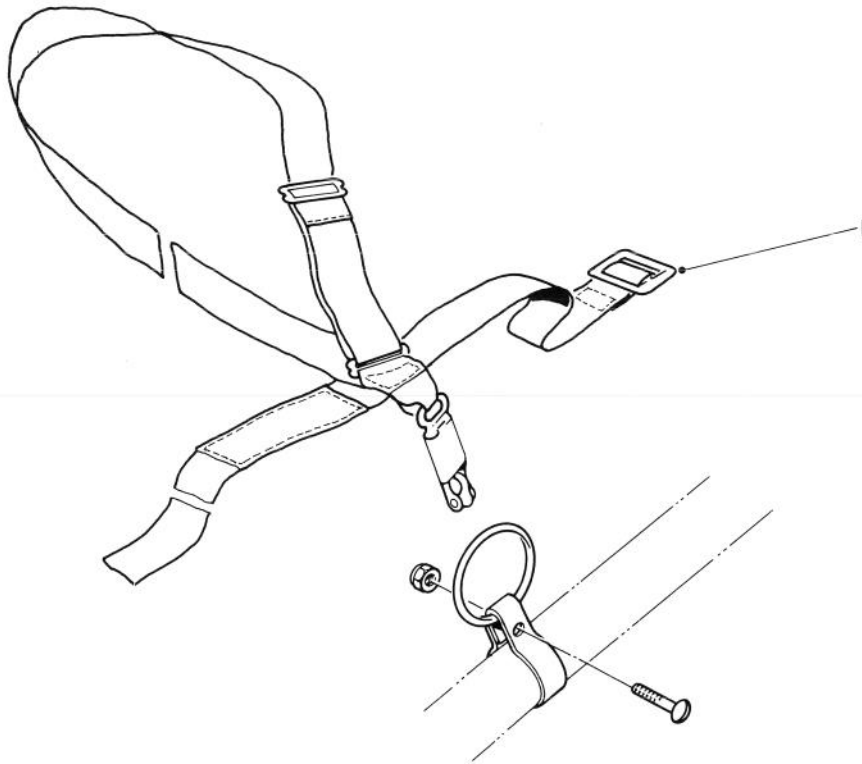


HARNESS, CLAMP & RING ASSEMBLY

Ref. No.	Part No.	Description	No. Used
1	46-2950	Shoulder Harness Std.	1
*	46-2690	Clamp & Ring Kit (Incl. Ref. #2-5)	1
2		Ring	1

Ref. No.	Part No.	Description	No. Used
3		Clamp	1
4	3251-3	Screw	1
5	3296-12	Nut	1

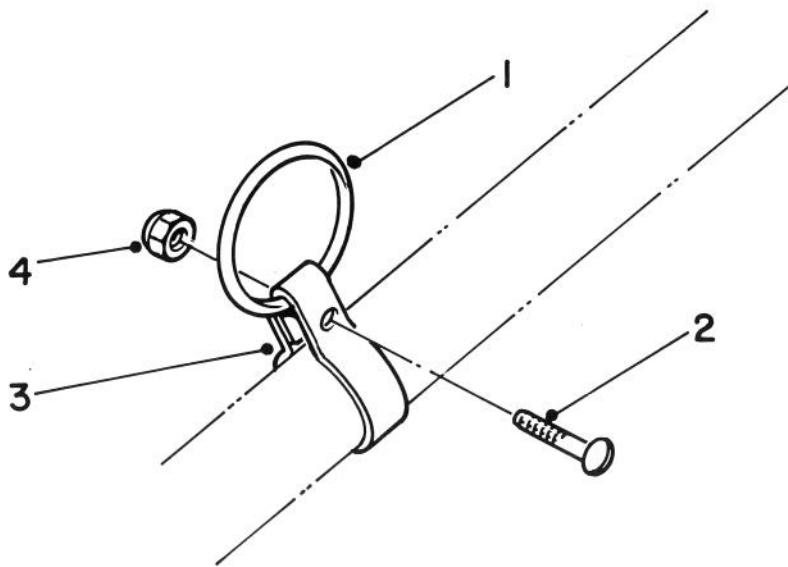
*Not Illustrated



DELUXE HARNESS KIT NO. 46-2960 (Optional)

Ref. No.	Part No.	Description	No. Used
1	46-2960	Deluxe Harness	1

Ref. No.	Part No.	Description	No. Used

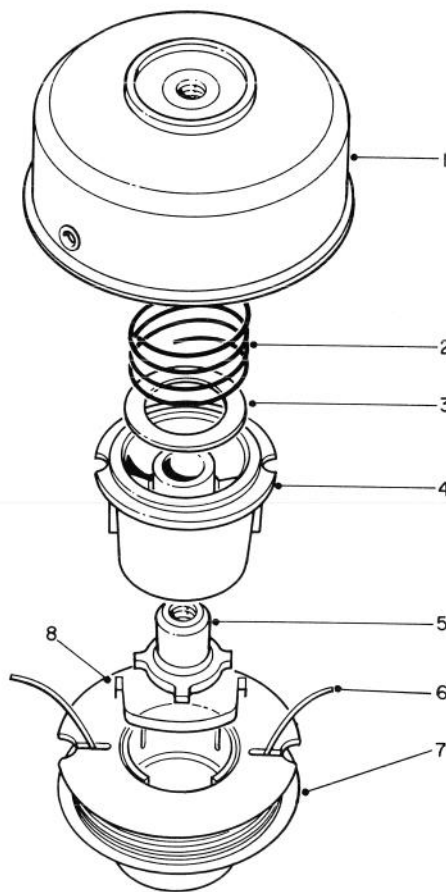


CLAMP & RING KIT NO. 46-2690

Ref. No.	Part No.	Description	No. Used
1	3251-3	Ring	1
2		Screw	1
3		Clamp	1

Ref. No.	Part No.	Description	No. Used
4	3296-12	Nut	1
*	46-2690	Clamp & Ring Kit (Incl. Ref. #1-4)	1

*Not Illustrated

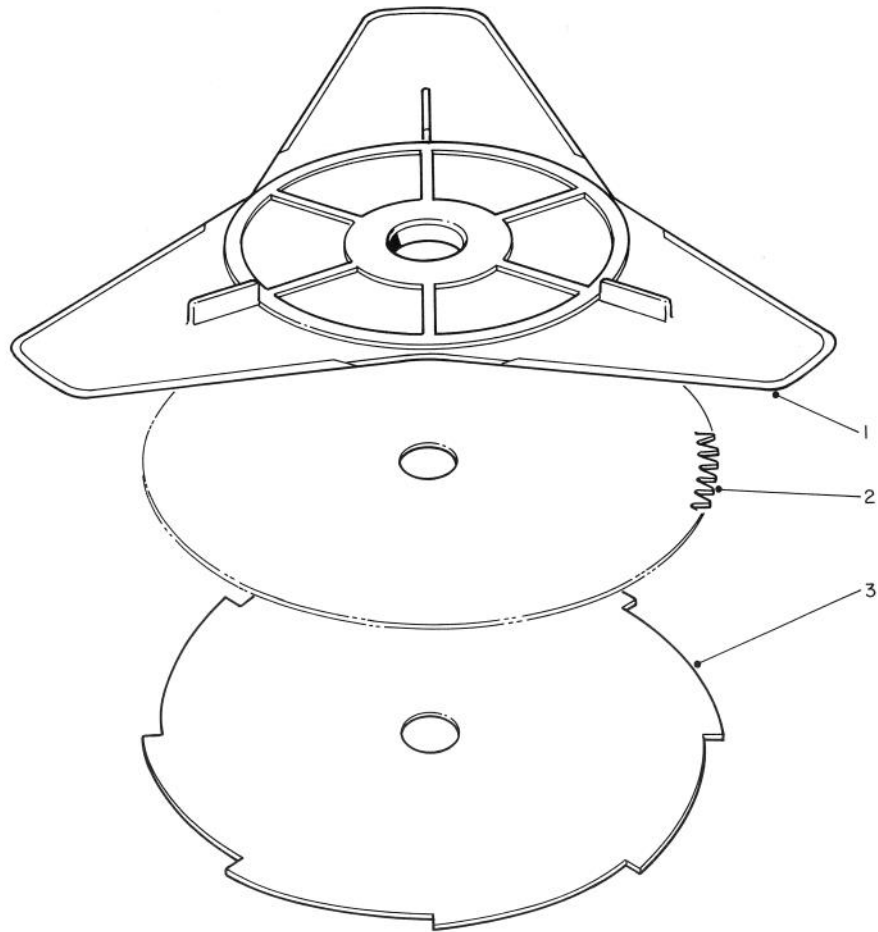


TAP AND TRIM HEAD 46-2800 (Optional)

Ref. No.	Part No.	Description	No. Used
1	46-2650	Drum Assembly w/Eyelet	1
2	33-6460	Spring	1
3	3256-42	Washer	1
4	33-6230	Spool Core	1
5	33-6470	Driver L.H.	1

Ref. No.	Part No.	Description	No. Used
6	43-5000	.080 Filament Line in Coil (38 ft.)	1
*	46-2710	.080 Filament Line in 1 lb. pkg. (400 ft.)	1
7	46-2820	Prewound Spool	1
8	33-8940	Saddle — Spool Cap	1

*Not Illustrated



FLEX, WEED BLADE AND BRUSH BLADE (Optional)

Ref. No.	Part No.	Description	No. Used
1	46-2790	Flex Blade	1
2	44-9840	8" Blade (80T)	1

Ref. No.	Part No.	Description	No. Used
3	44-9860	8" Blade (8T)	1

PRODUCT CHANGES

In an effort to make improvements available to TORO owners as quickly as possible, minor changes are incorporated into Toro's products from time to time that do not become immediately shown in the Parts Catalog. If such a change apparently has been made in your unit, which is not reflected in your manual, see your TORO Distributor or his Authorized TORO Service Dealer for information and part numbers.

IDENTIFICATION AND ORDERING

MODEL AND SERIAL NUMBERS

The Trimmer has two identification numbers: a model number and a serial number. The two numbers are stamped on a decal which is located on the upper rear of handle shaft. In any correspondence concerning the trimmer, supply model and serial numbers to assure that correct information and replacement parts are obtained.

To order replacement parts from an Authorized TORO Service Dealer, supply the following information:

1. Model and serial numbers of the trimmer.
2. Part number, description, and quantity of part(s) desired.

Note: Do not order by reference number if a parts catalog is being used; use the PART NUMBER.

The Toro Promise

TORO GAS TRIMMER/WEEDER A ONE YEAR LIMITED WARRANTY

The Toro Company promises to repair your TORO Product if defective in materials or workmanship. The following time periods from the date of purchase apply:

Residential Product 1 Year
Residential Products Used Commercially . . . 45 Days

The costs of parts and labor are included, but the customer pays the transportation costs. Just return any residential product to an Authorized TORO Service Dealer or TORO Distributor.

Should you feel your TORO Product is defective and wish to rely on The Toro Promise, the following procedure is recommended:

1. Contact any Authorized TORO Service Dealer, TORO Master Service Dealer, or TORO Distributor (the Yellow Pages of your telephone directory is a good reference source).
2. He will either instruct you to return the product to him or recommend another Authorized TORO Service outlet which might be more convenient.
3. Bring the product along with your original sales slip, or other evidence of purchase date, to the service dealer.
4. The servicing dealer will inspect the unit, advise you whether the product is defective and, if so, make all repairs necessary to correct the defect without extra charge to you.

If for any reason you are dissatisfied with the dealer's analysis of the defect or the service performed, you may contact us.

Write:

TORO Consumer Service Department
8111 Lyndale Avenue South
Minneapolis, Minnesota 55420

The above remedy of product defects through repair by an Authorized TORO Service Dealer is the purchaser's sole remedy for any defect.

THERE IS NO OTHER EXPRESS WARRANTY. ALL IMPLIED WARRANTIES OF MERCHANTABILITY AND

FITNESS FOR USE ARE LIMITED TO THE DURATION OF THE EXPRESS WARRANTY.

Some states do not allow limitations on how long an implied warranty lasts, so the above limitation may not apply to you.

This warranty applies only to parts or components which are defective and does not cover repairs necessary due to normal wear, misuse, accidents, or lack of proper maintenance. Regular, routine maintenance of the unit to keep it in proper operating condition is the responsibility of the owner.

All warranty repairs reimbursable under The Toro Promise must be performed by an Authorized TORO Service Dealer using Toro approved replacement parts.

Repairs or attempted repairs by anyone other than an Authorized TORO Service Account are not reimbursable under The Toro Promise. In addition, these unauthorized repair attempts may result in additional malfunctions, the correction of which is not covered by warranty.

THE TORO COMPANY IS NOT LIABLE FOR INDIRECT, INCIDENTAL OR CONSEQUENTIAL DAMAGES IN CONNECTION WITH THE USE OF THE PRODUCT INCLUDING ANY COST OR EXPENSE OF PROVIDING SUBSTITUTE EQUIPMENT OR SERVICE DURING PERIODS OF MALFUNCTION OR NON-USE.

Some states do not allow the exclusion or limitation of incidental or consequential damages, so the above limitation or exclusion may not apply to you.

This warranty gives you specific legal rights, and you may also have other rights which vary from state to state.

COUNTRIES OTHER THAN THE UNITED STATES OR CANADA

Customers who have purchased TORO products exported from the United States or Canada should contact their TORO Distributor (Dealer) to obtain guarantee policies for your country, province or state. If for any reason

you are dissatisfied with your Distributor's service or have difficulty obtaining guarantee information, contact the TORO importer. If all other remedies fail, you may contact us at The Toro Company.