



CCR™ Powerlite® 325 Snowthrower

Model No. 38173—220000001 and Up

Model No. 38183—220000001 and Up

Parts Catalog

Ordering Replacement Parts

To order replacement parts, please supply: the part number, the quantity, and the description of each part desired.

Understanding Reference Numbers

Each identified part in an illustration has a reference number. The reference number for a part also appears in the parts list, along with other information about the part.

This catalog uses two special reference number formats, one to indicate parts in a service assembly and another to indicate the quantity of a given part in an illustration.

Service Assembly Reference Numbers

Parts in service assemblies have reference numbers in the form **a:b**. The **a** represents the reference number of the entire service assembly and the **b** represents a sequential number unique to each part within the service assembly.

For example, a wheel assembly might be identified by reference number **6**, the tire by **6:1**, the valve by **6:2**, and the wheel by **6:3**. When you order the assembly identified by reference number **6**, you receive all parts identified by reference numbers **6:1**, **6:2**, and **6:3**. However, you may also order any part individually.

Reference numbers of this type appear in illustrations and in part lists.

Reference Numbers Indicating Quantity

In an illustration, if a reference number indicates more than one part, the reference number has the form **nX y**. The **n** represents the quantity of the part, the **X** is the multiplication symbol, and the **y** represents the reference number.

For example, in an illustration, the reference number **2X 37** means that two of the parts identified by reference number **37** are indicated.

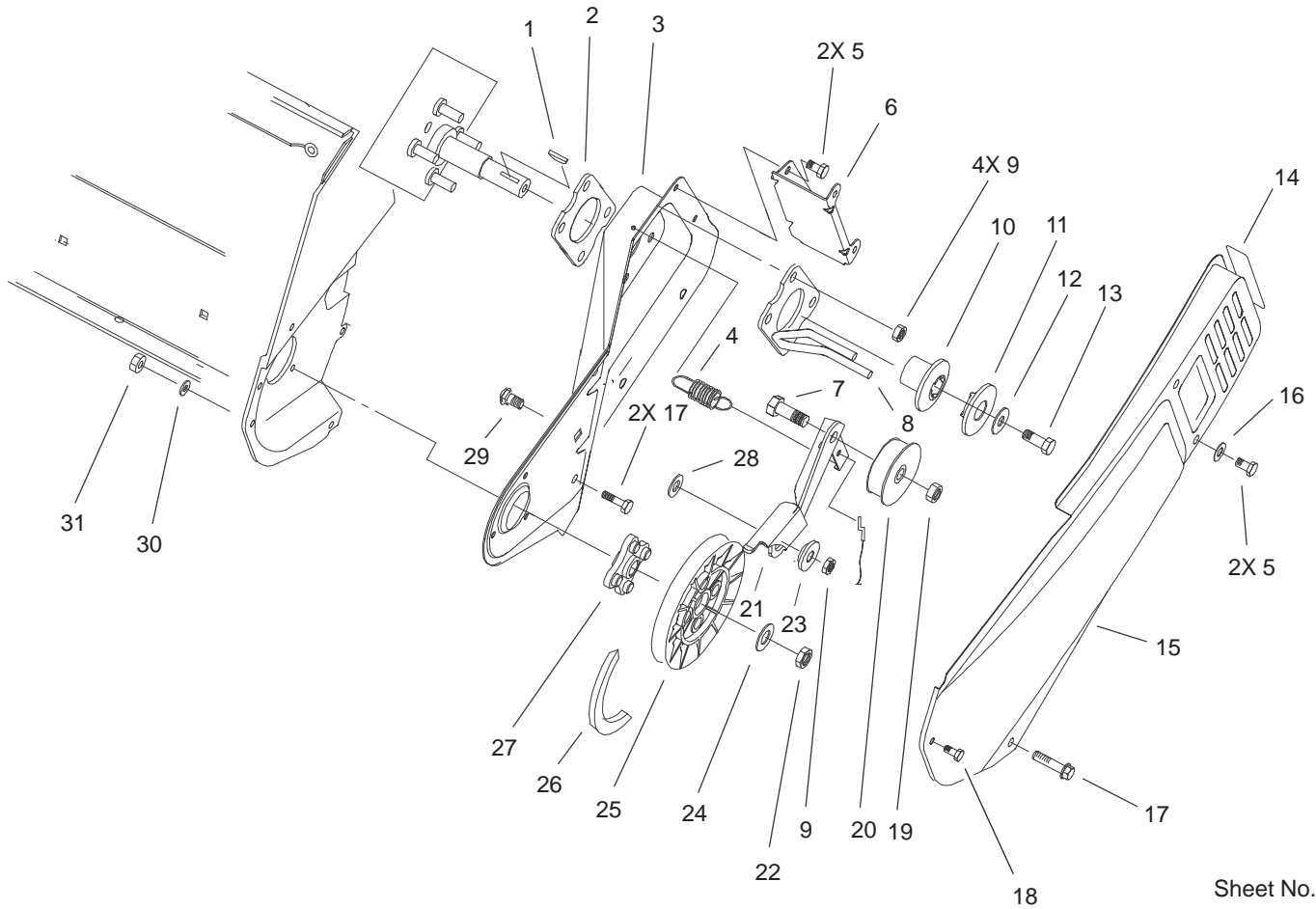
Contents

Description	Page	Description	Page
Impeller Drive Assembly	3	Carburetor Assembly No. 640086	
Housing, Upper Shroud, and Chute Assembly . . .	4	Tecumseh Model No. HSK635 Type 1723A	9
Impeller Assembly	5	Engine Assembly Tecumseh Model No.	
Engine, Side Plate and Wheel Assembly	6	HSK635–1723A	10
Motor and Switch Housing Assembly		Engine Assembly	
No. 105–2957		Tecumseh Model No. HSK635–1723A	11
(Only on 38183) (230 Volt)	7	Recoil Starter Assembly No. 590743	
Handle and Lower Shroud Assembly	8	Tecumseh Model No. HSK635 Type 1723A	12

Part Description Abbreviations

Part descriptions in this catalog may include the following abbreviations.

Abbreviation	Meaning	Abbreviation	Meaning
AR	as required	HYD	hydraulic
ASM	assembly	INC	incorporated
CARR	carriage	LH	left hand
DEG	degrees	NI	nylon insert
FH	flat head	PPH	Phillips pan head
GA	gauge	PTH	Phillips truss head
HF	hex flange	PTO	power take off
HH	hex head	RH	right hand
HHF	hex head flange	SFH	slotted fillister head
HLH	hex lag head	SHH	slotted hex head
HJ	hex jam	SQH	square head
HOC	height-of-cut	SHWH	slotted hex washer head
HS	hex socket	SPH	slotted pan head
HSBH	hex socket button head	SRH	slotted round head
HSFH	hex socket flat head	STD	standard
HSH	hex socket head	TAP	self tapping
HWH	hex washer head	TTH	Torx truss head
HWHTF	hex washer head thread forming	WH	wing head

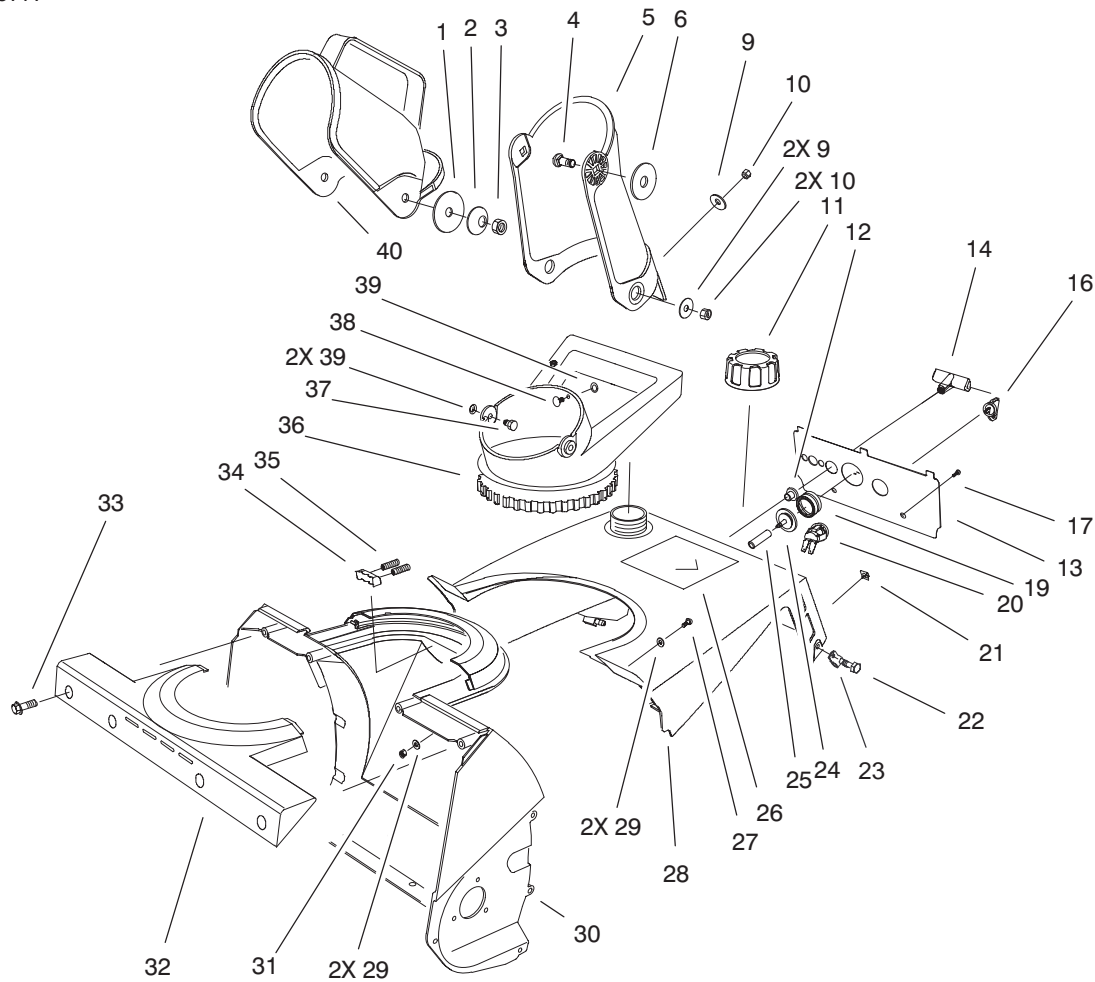


Sheet No.:3

Impeller Drive Assembly

Ref. No.	Part No.	Qty.	Description
1	3257-3	1	Key-Woodruff
2	71-5290-03	1	Plate-Engine
3	95-7945-03	1	Sideplate-LH
4	71-5470	1	Spring-Brake
5	32144-4	4	Screw-HWH
6	75-8870-03	1	Bracket-Belt Cover
7	323-44	1	Screw-HH
8	94-9946-03	1	Guide-Belt
9	3296-29	5	Nut-Lock, NI
10	71-5050	1	Hub - Half Sheave
11	71-5060	1	Cap - Half Sheave
12	3256-71	1	Washer-Flat
13	3235-6	1	Screw-Hex Hd
14	94-2561	1	Decal - Hot
15	95-7946-03	1	Cover-Belt
16	3256-1	2	Washer-Flat
17	46-8094	3	Screw-Plastite
18	32105-23	1	Screw
19	3296-59	1	Nut-Lock NI
20	71-5260	1	Pulley-Idler
21	94-9947	1	Arm-Brake
22	3296-38	1	Nut-Lock NI
23	94-9948	1	Bushing-Idler
24	3256-25	1	Washer-Flat
25	75-8750	1	Pulley-Driven
26	99-1790	1	V Belt (Powerlite)

Ref. No.	Part No.	Qty.	Description
27	75-8740	1	Hub
28	25-5640	1	Washer
29	3230-23	1	Screw-CARR
30	3256-14	1	Washer-Flat
31	3296-2	1	Nut-Lock

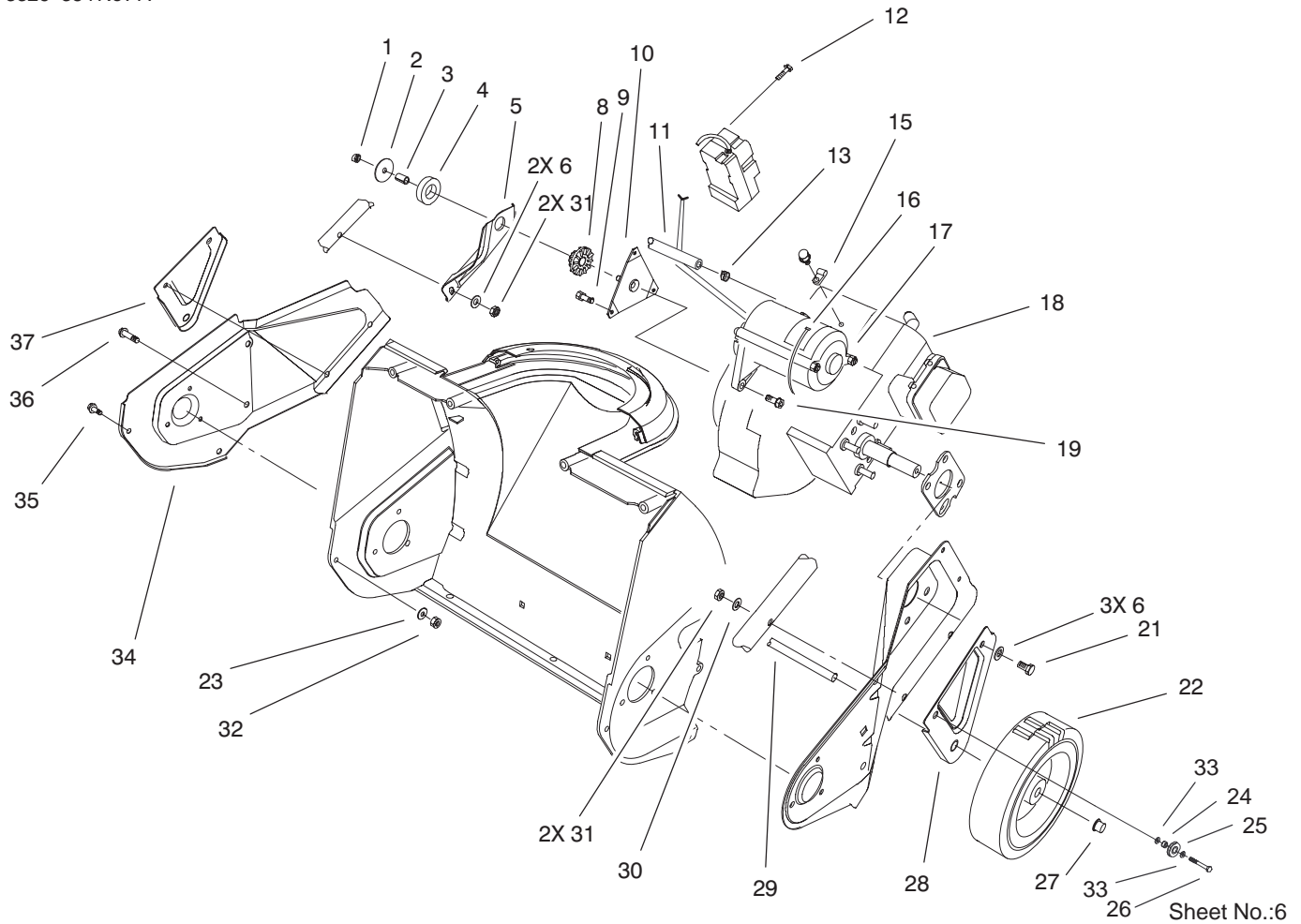


Sheet No.:4

Housing, Upper Shroud, and Chute Assembly

Ref. No.	Part No.	Qty.	Description
1	3256-68	2	Washer-Flat
2	3290-340	2	Washer-Belleville
3	3296-29	2	Nut-Lock, NI
4	3230-2	2	Screw-CARR
5	75-8762	1	Chute
6	95-1905	2	Washer-Rubber
9	3256-81	3	Washer-Flat
10	3296-56	3	Nut-Lock, NI
11	55-3573	1	Cap-Fuel ASM
12	23-7470	1	Guide-Starter Rope
13	104-4939	1	Panel-Control (only on: 38173)
13	104-4941	1	Panel-Control (only on: 38183)
14	92-4853	1	Handle-Starter
16	63-8360	1	Key-Ignition
17	32144-53	2	Screw-SHWH
19	66-7460	1	Bulb-Primer
20	40-5940	1	Switch-On/Off
21	49-1490	2	Nut
22	32144-89	2	Screw-Forming, Thread
23	98-2256	1	Clamp
24	44-2750	1	Body-Primer
25	44-3173	1	Hose-Primer

Ref. No.	Part No.	Qty.	Description
26	99-9332	1	Decal - Powerlite Rec. Ele 3.25 HP (only on: 38183)
26	99-9331	1	Decal - Powerlite Rec.3.25 HP (only on: 38173)
27	3250-32	2	Screw-PPH
28	75-8800	1	Shroud-Tank Assembly
29	3256-1	4	Washer-Flat
30	75-8660	1	Housing
31	3296-42	2	Nut-Lock, NI
32	75-8650	1	Retainer-Chute
33	46-8094	4	Screw-Plastite
34	75-9160	1	Detent-Chute
35	75-9170	2	Spring-Compression
36	75-8670	1	Handle-Chute
37	321-3	2	Screw-HH
38	3229-11	1	Screw-CARR
39	32115-15	3	Pushnut-Bolt Retainer
40	75-8770	1	Deflector-Chute

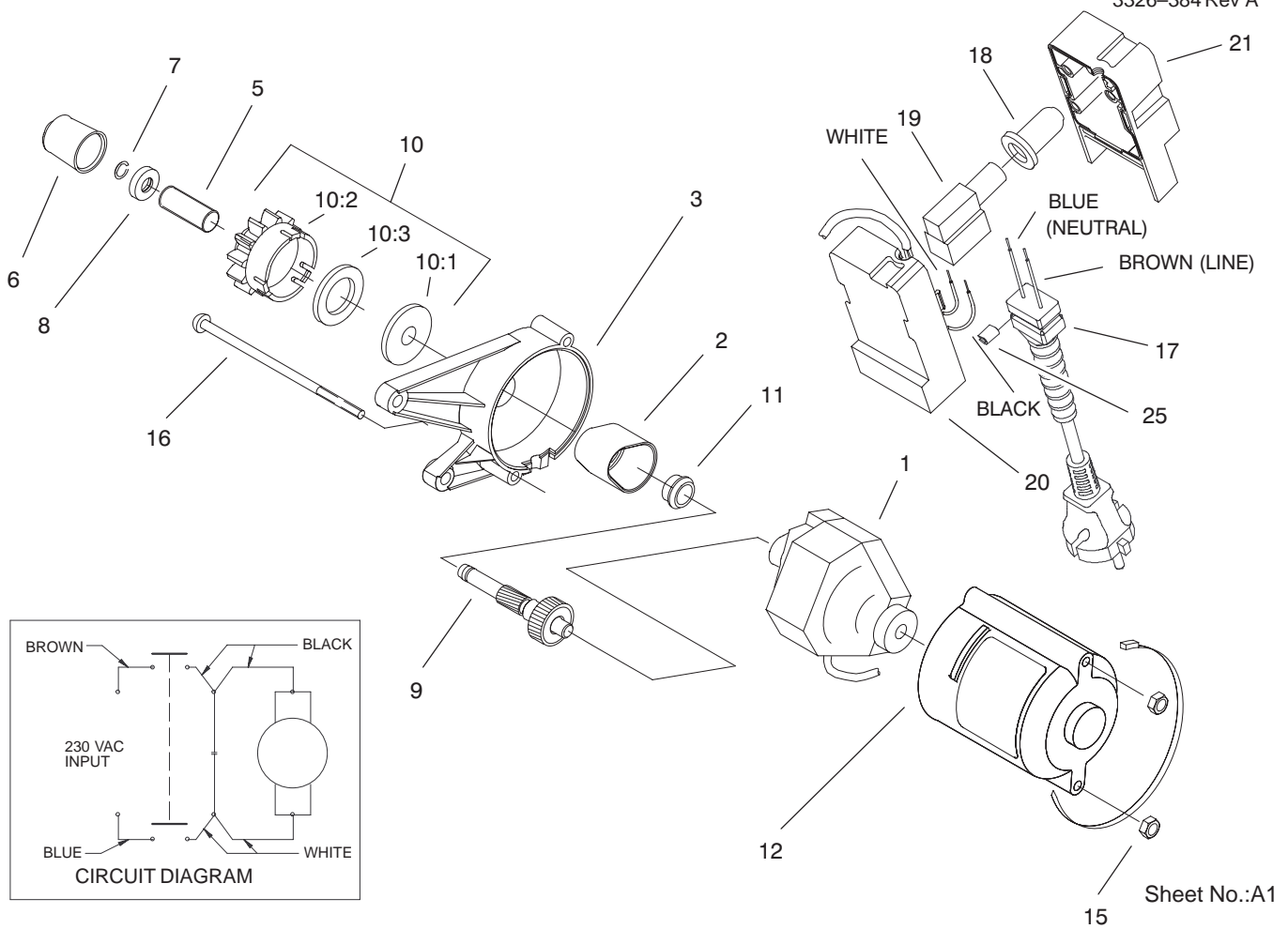


Engine, Side Plate and Wheel Assembly

Ref. No.	Part No.	Qty.	Description
1	3296-56	1	Nut-Lock, NI
2	3256-58	1	Washer-Flat
3	80-0650	1	Spacer-Tubular
4	95-1903	1	Ring - Isolator
5	75-8980-03	1	Bracket-Engine Support
6	3256-1	5	Washer-Flat
8	75-9100	1	Bushing-Isolator
9	94-2789	3	Screw
10	92-6012	1	Bracket/Stud ASM
11	49-2483	1	Line-Gas
12	32144-27	3	Screw-Plastite (only on: 38183)
13	2412-98	2	Clamp
15	2412-91	1	Clamp (only on: 38183)
16	250-7	1	Tie-Cable (only on: 38183)
17	105-2957	1	Starter ASM (230 Volt) (Service) (only on: 38183)
☆18		1	Engine/Ccr Powerlite E 3.25 HP Tecumseh Model Hsk635-1723a
19	80-0700	2	Screw - Mtg Torx (only on: 38183)

Ref. No.	Part No.	Qty.	Description
21	321-10	3	Screw-HH
22	23-3250	2	Wheel
23	3256-14	1	Washer-Flat
24	55-9370	1	Spacer-Blade, Rotor
25	95-7949	1	Cable-Pulley
26	321-11	1	Screw-HH
27	3290-320	2	Retainer-Push On
28	75-8910-03	1	Bracket-Wheel, LH
29	27-0062	1	Axle
30	3-7501	2	Washer
31	3296-42	4	Nut-Lock, NI
32	3296-2	1	Nut-Lock
33	3256-1	2	Washer-Flat
34	75-8820-03	1	Plate-RH Side
35	32105-23	1	Screw
36	46-8094	3	Screw-Plastite
37	75-8900-03	1	Bracket-Wheel, RH

☆ Not serviced



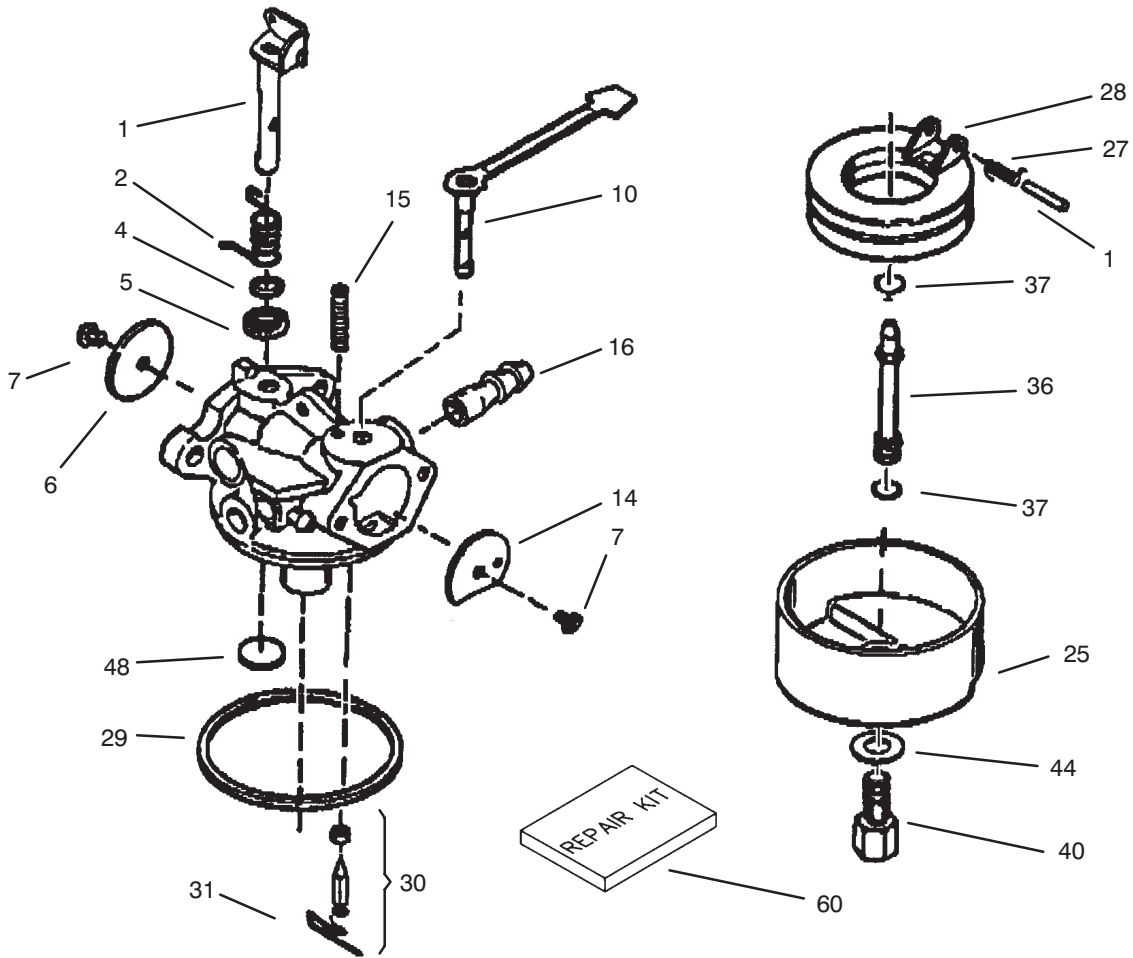
Sheet No.:A1

Motor and Switch Housing Assembly No. 105-2957 (Only on 38183) (230 Volt)

Ref. No.	Part No.	Qty.	Description
*		1	230 Volt Starter ASM
1	99-1917	1	Motor-Starter
2	70-7850	1	Cover-Gear
3	100-3443	1	Housing-Upper Starter
5	61-4690	1	Spring
6	70-7890	1	Cap-Pinion
7	61-4680	1	Ring-Lock
8	100-2902	1	Stop-Pinion
9	95-1797	1	Shaft/Gear ASM
10	84-5240	1	Pinion ASM
10:1	70-7790	1	Nut
10:2	84-5230	1	Pinion
10:3	84-5440	1	Ring - Rubber
11	70-7900	1	Bushing
12	100-3444	1	Housing-Lower Starter
15	3296-2	2	Nut-Lock
16	32144-101	2	Screw
17	100-3556	1	Plug-Power 230 Volt
18	36-8350	1	Boot-Switch
19	36-8340	1	Switch-Starter
20	100-3441	1	Switch-Base Housing

Ref. No.	Part No.	Qty.	Description
21	100-3442	1	Switch-Cap Housing
25	99-6088	1	Spacer-Plug

* Not illustrated



Sheet No.:

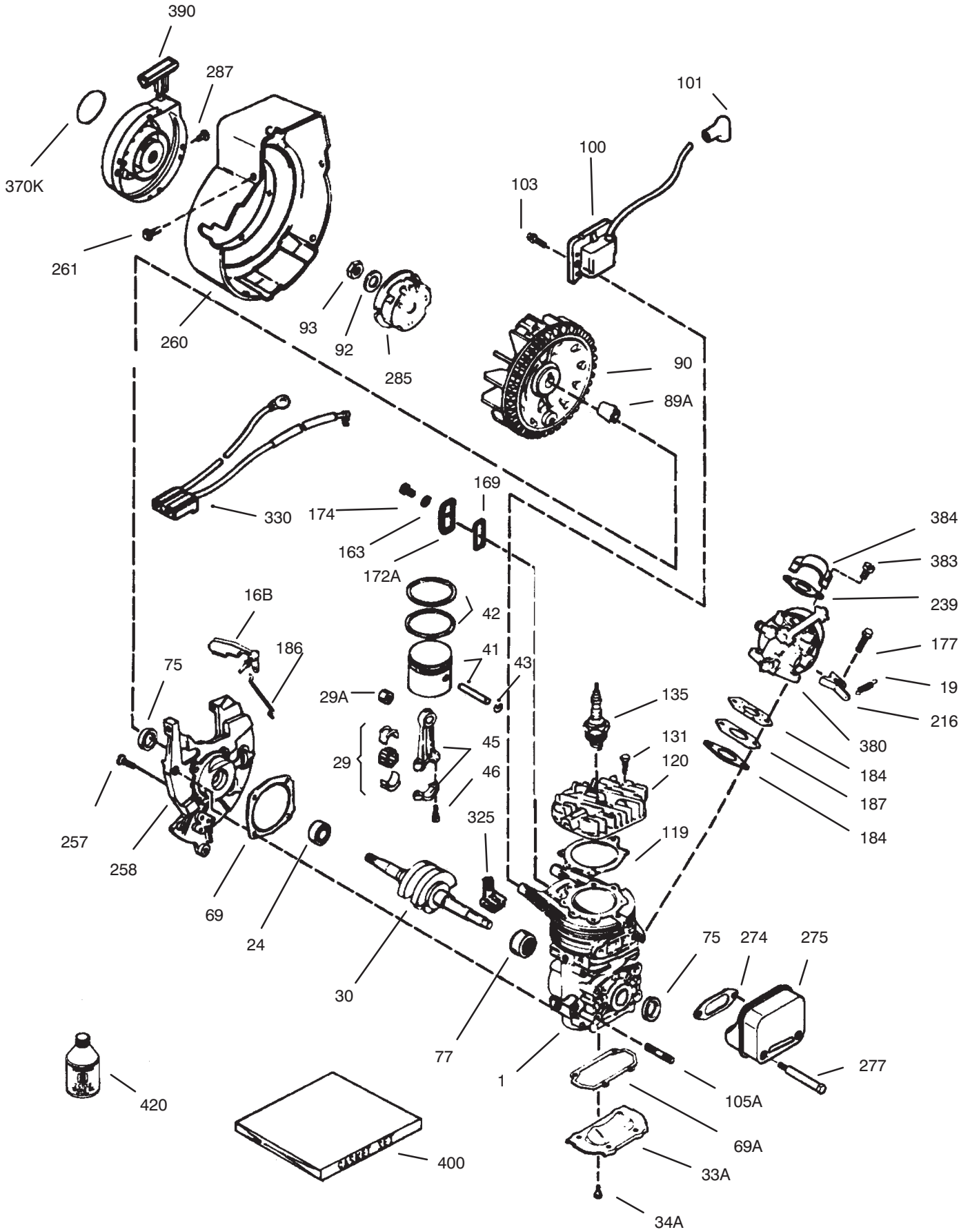
Carburetor Assembly No. 640086 Tecumseh Model No. HSK635 Type 1723A

Ref. No.	Part No.	Qty.	Description
1	632166A	1	Throttle Shaft & Lever Assy.
2	632169	1	Spring – Throttle Return
4	631184	1	Washer – Steel
5	631183	1	Washer – Felt
6	631621	1	Shutter – Throttle
7	650506	2	Screw – Shutter
10	632553	1	Choke Shaft & Lever Assy.
14	631815	1	Shutter – Choke
15	630735	1	Spring – Choke Positioning
16	632164	1	Fitting – Fuel Inlet
25	631867	1	Bowl – Float
26	632386	1	Spring – Float Shaft
27	631024	1	Shaft – Float
28	632019	1	Float – Carburetor
29	631028	1	Seal – O–Ring
30	631021	1	Inlet Needle, Seat & Clip (Incl. ref. #31)
31	631022	1	Clip – Spring
36	640080	1	Nozzle – Main

Ref. No.	Part No.	Qty.	Description
37	632547	2	O–Ring
40	640087	1	Nut – Float Bowl
44	27110A	1	Washer – Bowl
48	631027	1	Plug – Welch
60	632760	1	Repair Kit

Obtain Parts from Tecumseh

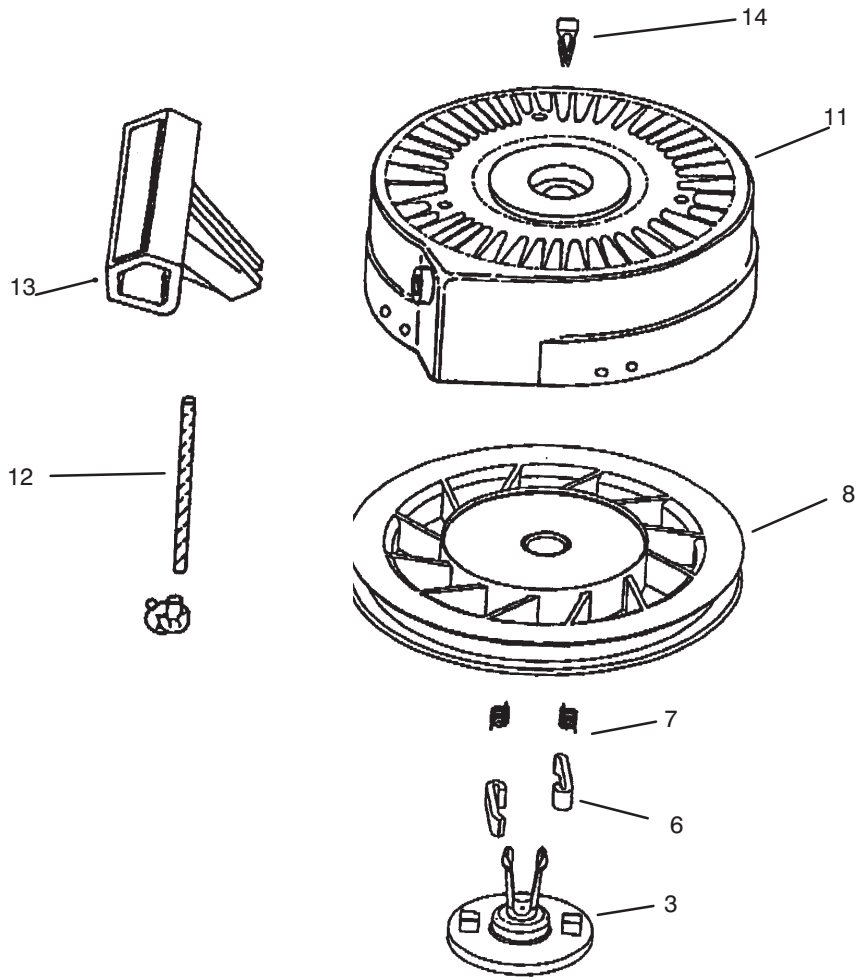
Engine Assembly Tecumseh Model No. HSK635-1723A



Engine Assembly

Tecumseh Model No. HSK635-1723A

Ref. No.	Part No.	Qty.	Description	Ref. No.	Part No.	Qty.	Description
1			Block Ass'y – Cylinder (Order short block if replacement is required)	258	350422	1	Base Ass'y – Blower Housing (Incl ref. #27)
16B	490291A	1	Vane Ass'y – Air	260	350437	1	Housing – Blower
19	570707	1	Spring – Governor	261	650737	3	Screw – Hex. Washer Hd.
24	530110	1	Bearing – Ball	274*	510207A	1	Gasket – Exhaust
29	530150	1	Bearing & Liner Set – Needle (37 Needles)	275	390332	1	Muffler (Incl. Ref. #274 & 277)
29A	530104A	1	Bearing – Cartridge	277	650869	2	Screw – Torx Pan Hd.
30	290602	1	Crankshaft	285	590551A	1	Cup – Starter
33A	570644	1	Plate – Cover	287	650926	3	Screw
3A4	650579	4	Screw – Pan Flex Hd.	325	29443	1	Clip – Spring
41	310283A	1	Piston & Pin Ass'y (Incl. ref. #43)	330	611131A	1	Harness – Wire
42	310289	1	Ring Set – Piston	370K	36695	1	Decal – Starter
43	310167	2	Ring – Piston Pin Retaining	380	640086	1	Carburetor (Incl. ref. #184)
45	310235B	1	Rod Ass'y – Connecting (Incl. ref. #29, 29A & 46)	383	570434	1	Baffle – Air
46	650633	2	Screw – Connecting Rod	384	650431	2	Screw – Pan Hd. Sems
69*	510292A	1	Gasket – Cylinder Cover	390	590743	1	Starter Ass'y – Rewind
69A*	510323A	1	Gasket – Cover Plate	400	510324B	1	Gasket Set (Incl. Items Marked *)
75	510319	2	Seal – Oil	422	730227B	1	Oil – 2 Cycle (8 oz.)
77	530105	1	Bearing – Needle				
89A	611032	1	Sleeve – Flywheel				
90	611066	1	Flywheel				
92	650815	1	Washer – Belleville				
93	650390	1	Nut – Flywheel				
100	34443B	1	Solid State Ass'y (Incl. Ref. #101)				
101	610118	1	Cover – Spark Plug				
103	651007	2	Screw – Hex. Hd. Sems				
105A	650796	4	Stud – Cylinder				
119	*510274A	1	Gasket – Cylinder Head				
120	250240B	1	Head – Cylinder				
131	650477	5	Screw – Pan Flex Hd.				
135	611049	1	Plug – Spark (RCJ-8Y or equivalent)				
163	650838	1	Washer – Flat				
169*	510325A	1	Gasket – Cover				
172A	570708	1	Cover Ass'y – Compression Release				
174	650579	1	Screw – Torx. Hd.				
177	650959	2	Screw				
184*	510326A	2	Gasket – Carburetor				
186	490322	1	Link – Governor				
187	570438A	1	Spacer				
216	570645	1	Level – Adjusting				
239	35815	1	Gasket – Filter Base				
257	650911	4	Screw – Torx Pan Hd.				



Sheet No.:

Recoil Starter Assembly No. 590743 Tecumseh Model No. HSK635 Type 1723A

Ref. No.	Part No.	Qty.	Description
3	590740	1	Retainer
6	590616	2	Dog - Starter
7	590617	2	Spring - Dog
8	590645A	1	Pulley & Rewind Spring Asm
11	590643	1	Starter Housing Assembly
12	590535	1	Rope - Starter
13	590701	1	Handle - Starter
14	590760	1	Spring Clip

Ref. No.	Part No.	Qty.	Description

Obtain Parts from Tecumseh

