



Quiet Collector

Wheel Horse[®] 5xi Garden Tractor Attachment

Model No. 79451—Serial No. 23000001 and Up

Operator's Manual



Contents

	Page
Introduction	2
Safety	3
Safety and Instruction Decals	4
Setup	5
Loose Parts	5
Installing the Quiet Collector Drive Kit	5
Remove the Drawbar Hitch	5
Installing the Quick Hitch	6
Installing the Double Pulley	6
Installing the Drive Belt and Mower	7
Installing the Belt Cover	7
Installing the Collector	8
Installing the Collector Belt	8
Installing the Boot	9
Cutting the Discharge Tubes	9
Installing the Discharge Tubes	10
Operation	10
Emptying the Quiet Collector	11
Holding the Collector Door Open	11
Changing the Draft Control	12
Clearing Obstructions From the Collector	12
Using the Full Collector Gauge	12
Removing the Collector	12
Operating and Bagging Tips	13
Maintenance	14
Recommended Maintenance Schedule	14
Cleaning the Screen	14
Cleaning the Collector	14
Lubricating the Idler Arm	14
Inspecting the Collector	14
Inspecting the Mower Blades	14
Storage	14
Troubleshooting	15

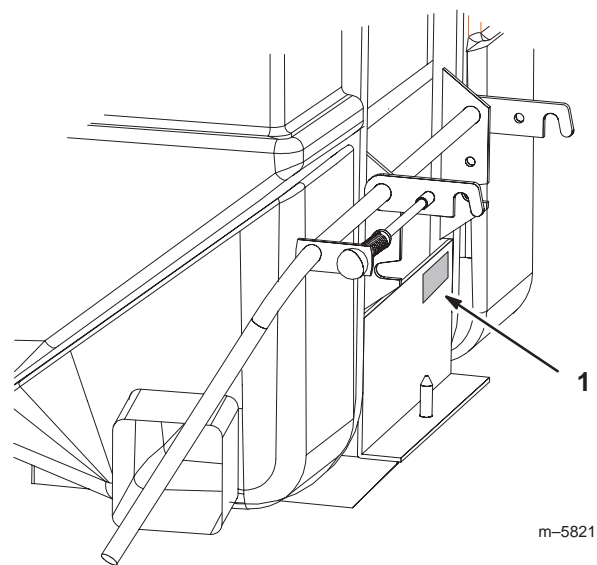


Figure 1

1. Location of the model and serial numbers

Write the product model and serial numbers in the space below:

Model No. _____
Serial No. _____

This manual identifies potential hazards and has special safety messages that help you and others avoid personal injury and even death. **Danger**, **Warning**, and **Caution** are signal words used to identify the level of hazard. However, regardless of the hazard, be extremely careful.

Danger signals an extreme hazard that *will* cause serious injury or death if you do not follow the recommended precautions.

Warning signals a hazard that *may* cause serious injury or death if you do not follow the recommended precautions.

Caution signals a hazard that may cause minor or moderate injury if you do not follow the recommended precautions.

This manual uses two other words to highlight information. **Important** calls attention to special mechanical information and **Note**: emphasizes general information worthy of special attention.

The following list contains safety information specific to Toro products and other safety information you must know.

Introduction

Read this manual carefully to learn how to operate and maintain your product properly. The information in this manual can help you and others avoid injury and product damage. Although Toro designs and produces safe products, you are responsible for operating the product properly and safely.

Whenever you need service, genuine Toro parts, or additional information, contact an Authorized Service Dealer or Toro Customer Service and have the model and serial numbers of your product ready. Figure 1 illustrates the location of the model and serial numbers on the product.

Safety

The following list contains safety information specific to Toro products and other safety information you must know.

- Become familiar with the safe operation of the equipment and with the operator controls, and safety signs.
- Use extra care with grass catchers or other attachments. These can change the operating characteristics and the stability of the machine.
- Follow the manufacturer's recommendations for adding or removing wheel weights or counterweights to improve stability.
- Do not use a grass catcher on steep slopes. A heavy grass catcher could cause loss of control or overturn the machine.
- Slow down and use extra care on hillsides. Be sure to travel in the recommended direction on hillsides. Turf conditions can affect the machine's stability. Use extreme caution while operating near drop-offs.
- Keep all movement on slopes slow and gradual. Do not make sudden changes in speed, directions or turning.
- The grass catcher can obstruct the view to the rear. Use extra care when operating in reverse.
- Use care when loading or unloading the machine into a trailer or truck
- Never operate with the discharge deflector raised, removed or altered, unless using a grass catcher or mulching baffles.
- Keep hands and feet away from moving parts. Do not make adjustments with the engine running.
- Stop on level ground, disengage drives, chock or block wheels, shut off engine before leaving the operator's position for any reason including emptying the grass catcher or unclogging the chute.
- If you remove the grass catcher, be sure to install any discharge deflector or guard that might have been removed to install the grass catcher. Do not operate the mower without either the entire grass catcher or the grass deflector in place.
- Stop the engine before removing the grass catcher or unclogging the chute.
- Do not leave grass in grass catcher for extended periods of time.
- Grass catcher components are subject to wear, damage and deterioration, which could expose moving parts or allow objects to be thrown. Frequently check components and replace with manufacturer's recommended parts, when necessary.

Safety and Instruction Decals



Safety decals and instructions are easily visible to the operator and are located near any area of potential danger. Replace any decal that is damaged or lost.



98-3679

1. Squeeze the lever.
2. Raise the handle to the dump position.
3. Release the lever.
4. Lower the handle to dump the grass clippings.
5. Return the handle to the dump position.
6. Squeeze the lever and lower the handle to the operation position.
7. Release the lever.



98-3680

1. Blow right
2. Collect grass
3. Blow left

Setup

Note: Determine the left and right sides of the machine from the normal operating position.

Loose Parts

Note: Use the chart below to verify all parts have been shipped.

DESCRIPTION	QTY.	USE
Quick hitch	1	Installing the quick hitch
Bolt, 3/8 x 1-1/4 in.	2	
Locknut, 3/8 in.	2	
Flat washer, 7/16 in.	4	
Double pulley	1	Installing the double pulley
Pulley mounting plate	1	
Top plate	1	
Locknut, 7/16 in.	1	
Flange nut, 3/8 in.	4	
Flat washer, 7/16 in.	2	
Bolt, 3/8 x 3-1/2 in.	4	
Collector	1	Installing the collector
Cotter pin	1	
Knob	1	
Clevis pin, 3/8 x 1-1/2 in.	1	
Hairpin cotter pin	1	
Collector belt	1	Installing the collector belt
Upper tube	1	Installing the discharge tubes
Straight tube	1	
Operator's manual	1	Read before operation

Installing the Quiet Collector Drive Kit

Note: Install the Collector Drive Kit **before** installing the Quiet Collector.

Remove the Drawbar Hitch

1. Remove the snap ring from the pin and slide from the drawbar and spacers. Remove the hitch from the tractor (Fig. 2).

Note: Save the hitch and spacers for use when installing the hitch.

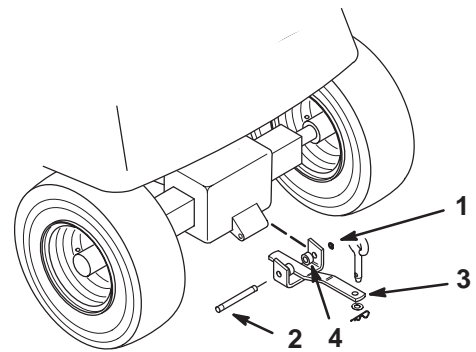
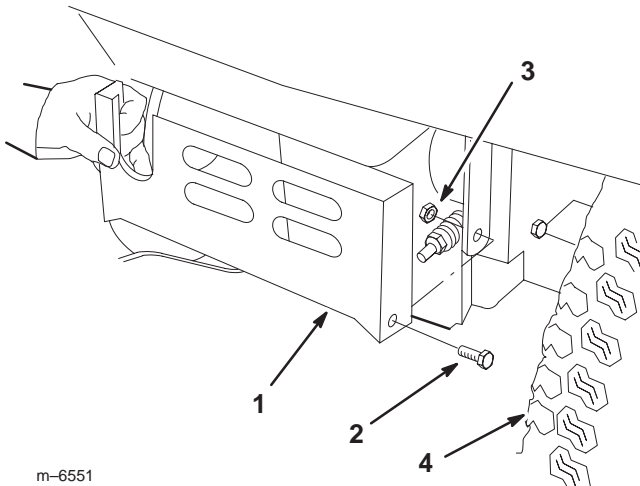


Figure 2

- | | |
|--------------|---------------|
| 1. Snap ring | 3. Drawbar |
| 2. Pin | 4. Spacer (2) |

2314

- Remove the two bolts, nuts, and rear cover plate from the back of the tractor (Fig. 3).



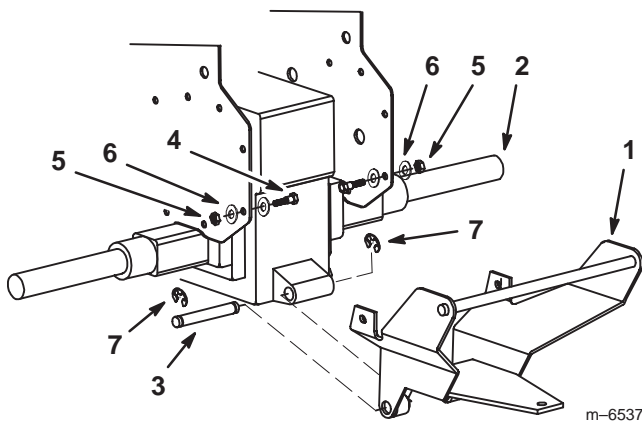
m-6551

Figure 3

- | | |
|---------------------|--------------|
| 1. Rear cover plate | 3. Nut |
| 2. Bolt | 4. Rear tire |

Installing the Quick Hitch

- Install the lower part of the quick hitch to the tractor using the pin and hardware that held the draw bar hitch to the tractor (Fig. 4).
- Install the upper part of the quick hitch to the tractor with 2 bolts (3/8 x 1-1/4 inch), 4 flat washers (7/16 inch), and 2 locknuts (3/8 inch) (Fig. 4).



m-6537

Figure 4

- | | |
|-----------------------|--------------------------|
| 1. Quick hitch | 5. Nut, 3/8 inch |
| 2. Rear axle | 6. Flat washer, 3/8 inch |
| 3. Pin | 7. Snap ring |
| 4. Bolt, 3/8 x 1 inch | |

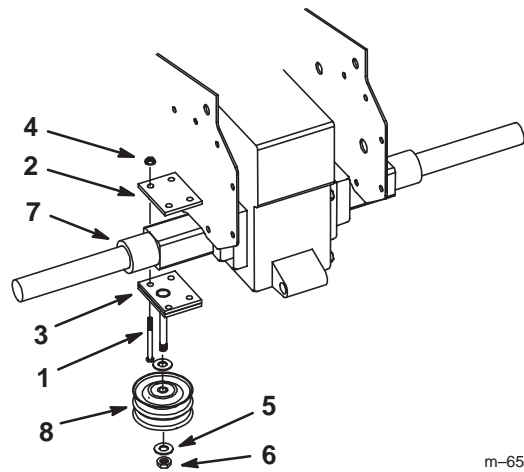
Installing the Double Pulley

Note: If you have a Rollover Protection System (ROPS) installed, refer to the next section for installing the double idler pulley.

- Loosely, install the pulley mounting plate and top plate to the left hand rear axle with 4 bolts (3/8 x 3-1/2 inch) and 4 flange nuts (3/8 inch) (Fig. 5).
- Slide the two plates to the edge of the square portion of the axle and then tighten the bolts and nuts (Fig. 5).

Note: Make sure the square head set screw, which retains the rear wheel to the axle, does not touch the double pulley when the rear wheel rotates.

- Install a flat washer (7/16 inch) and the double pulley onto the pulley shaft (Fig. 5).
- Secure the double pulley with a flat washer (7/16 inch) and locknut (7/16 inch) (Fig. 5).



m-6538

Figure 5

- | | |
|---------------------------|---------------------------|
| 1. Bolt, 3/8 x 3-1/2 inch | 5. Flat washer, 7/16 inch |
| 2. Top plate | 6. Lock nut, 7/16 inch |
| 3. Pulley mounting plate | 7. Left rear axle |
| 4. Flange nut, 3/8 inch | 8. Double pulley |

Installing the Double Idler Pulley with a Rollover Protection System (ROPS)

- Remove the existing 4 bolts that hold the ROPS and plate to the left side of the rear axle.
- Replace the ROPS plate with the pulley mounting plate.
- Secure the ROPS and pulley mounting plate with the 4 bolts removed in step 1 to the rear axle.

Note: Make sure the square head set screw, which retains the rear wheel to the axle, does not touch the double idler pulley when installed and when the rear wheel rotates.

- Install a flat washer (7/16 inch) and the double idler onto the pulley shaft (Fig. 5).

- Secure the double idler pulley with a flat washer (7/16 inch) and locknut (7/16 inch) (Fig. 5).

Installing the Drive Belt and Mower

- Install the mower if it is not installed. Refer to the mower operators manual.
- Route the drive belt under the linkage to the top pulley of the blade spindle and around the front idler V pulley (Fig. 6).
- Route the drive belt onto the top pulley of the double pulley mounted on the tractor's left side axle (Figures 7 and 12).
- Slide a large screwdriver or a pry bar, into the tube welded on the flat idler pulley arm and pull forward to release the tension and at same time route the drive belt around the flat idler pulley (Fig. 7).
- Be sure the belt is routed properly before starting the mower (Fig. 7).

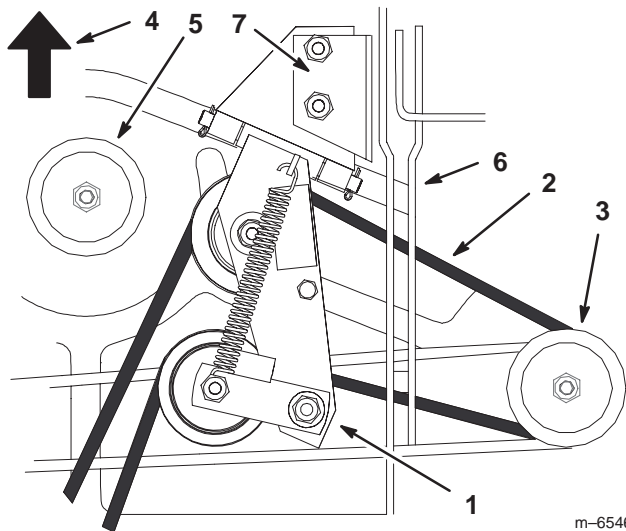
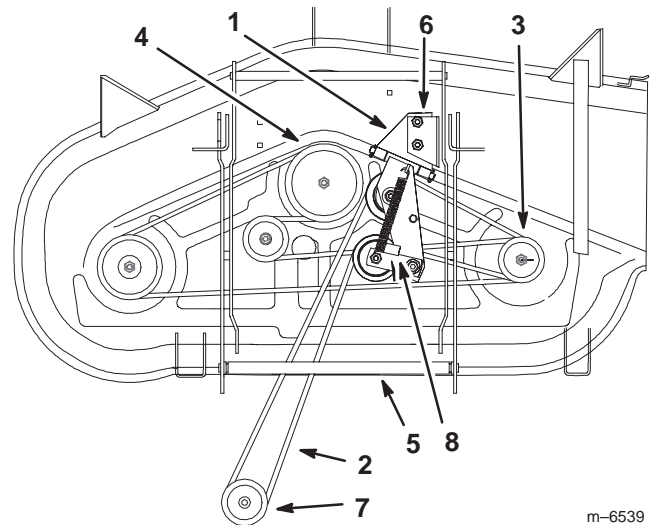


Figure 6

- | | |
|-------------------------|------------------------|
| 1. Idler assembly | 5. Center spindle |
| 2. Collector drive belt | 6. Mower linkage |
| 3. Right side spindle | 7. Right bracket guide |
| 4. Front of mower | |



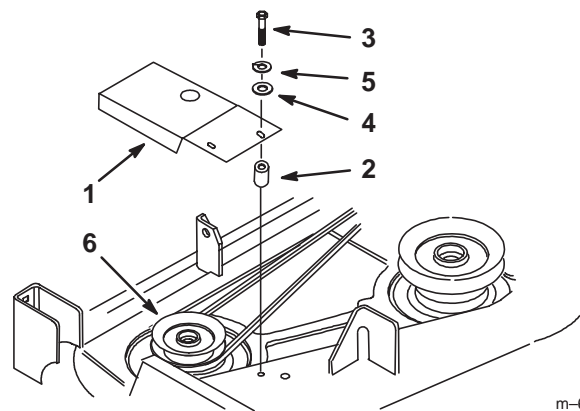
m-6539

Figure 7

- | | |
|-------------------------|---|
| 1. Idler assembly | 6. Right bracket guide |
| 2. Collector drive belt | 7. Double pulley mounted on the rear axle |
| 3. Right side spindle | 8. Tube welded on to flat idler |
| 4. Center spindle | |
| 5. Mower linkage | |

Installing the Belt Cover

- Install the belt cover with 3 spacers [1/2 inch (13 mm)] between the belt cover and mower (Fig. 3).
- Secure the belt cover and spacers with 3 bolts (1/4 x 1 inch), 3 flat washers (5/16 inch) and 3 lock washers (1/4 inch) (Fig. 3).



m-6558

Figure 8

- | | |
|-----------------------|---------------------------|
| 1. Belt cover | 4. Flat washer, 5/16 inch |
| 2. Spacer, 1/2 inch | 5. Lock washers, 1/4 inch |
| 3. Bolt, 1/4 x 1 inch | 6. Righthand pulley |

Installing the Collector

1. Align the hinges on both halves of the collector. The halves must be positioned in the closed position (Fig. 9).
2. Push the dumping arm through the hinges and secure with a cotter pin (3/16 x 1 in.) (Fig. 9).

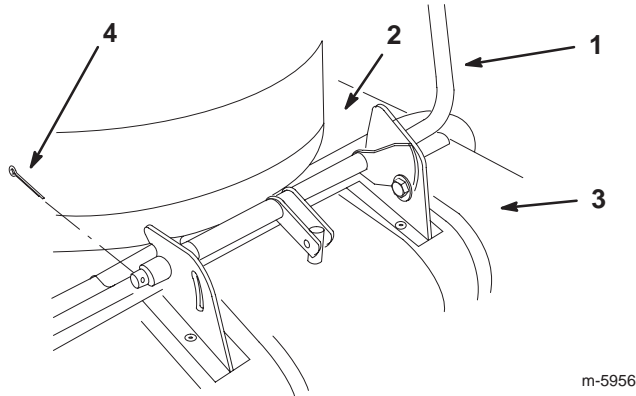


Figure 9

- | | |
|---------------------|-------------------|
| 1. Dumping arm | 3. Collector door |
| 2. Collector hopper | 4. Cotter pin |

3. Install the oval knob on the draft control and the collector clutch control (Fig. 10).

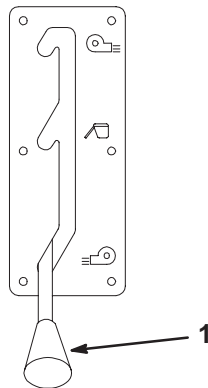


Figure 10

1. Knob

4. Place the quick hitch hooks, on the collector, over the quick hitch round bar (Fig. 11).

5. Pull the hitch lever up. This will raise the hopper and engage the collector pin into the hitch extension (Fig. 11).
6. Pull the locking pin out to allow the collector to be raised into full upright position (Fig. 11).
7. When the collector is in upright position, release the locking pin and lock the collector into position (Fig. 11).
8. Secure left side hitch hook with a clevis pin (3/8 x 1-1/2 in.) and a hairpin cotter pin (Fig. 11).

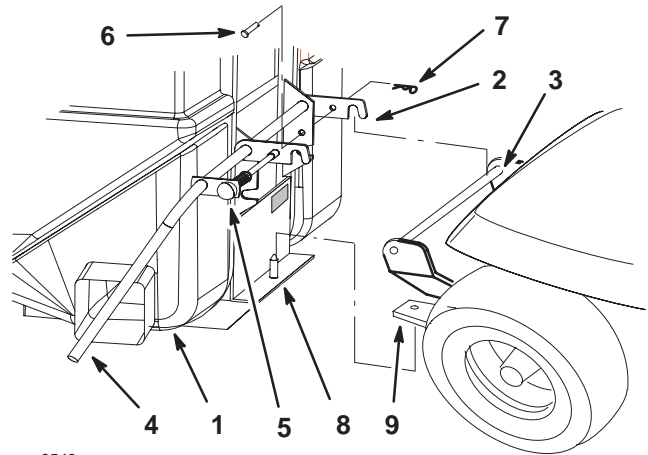


Figure 11

- | | |
|--------------------------|--------------------------------|
| 1. Collector | 6. Clevis pin, 3/8 x 1-1/2 in. |
| 2. Quick hitch hooks | 7. Hairpin cotter pin |
| 3. Quick hitch round bar | 8. Collector pin |
| 4. Hitch lever | 9. Hitch extension |
| 5. Locking pin | |

Installing the Collector Belt

1. Route the collector belt around the collector pulley and idler pulley (Figures 12 and 13).
2. Route the collector belt onto the bottom pulley of the double pulley mounted on the tractor's left side axle (Fig. 12).
3. Pull on the idler pulley to release the tension and at same time route the collector belt around the idler pulley (Fig. 13).

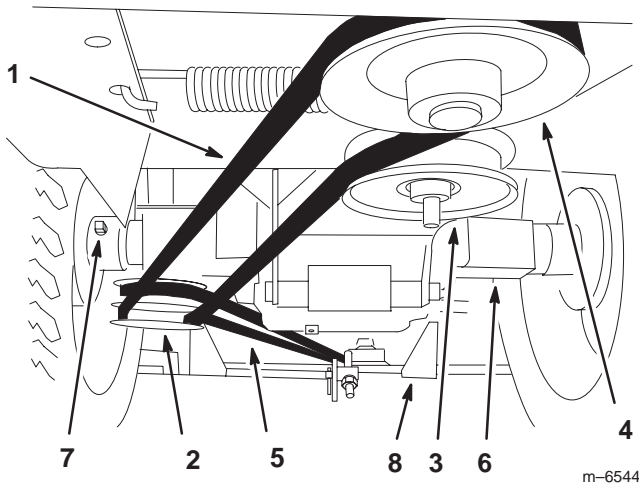


Figure 12

- 1. Collector belt
- 2. Double pulley on rear axle
- 3. Collector idler pulley
- 4. Collector pulley
- 5. Drive belt
- 6. Rear axle
- 7. Square head set screw
- 8. Mower

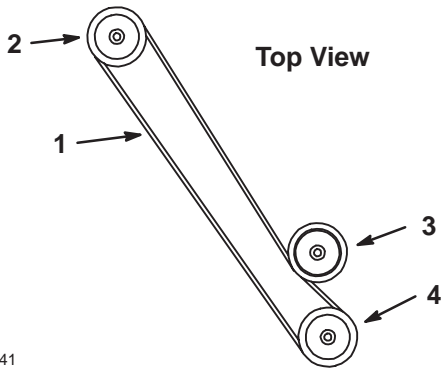


Figure 13

- 1. Collector belt
- 2. Double pulley on rear axle
- 3. Collector idler pulley
- 4. Collector pulley

Installing the Boot

Note: Do not remove the grass deflector.

1. Disengage the PTO and set the parking brake.
2. Stop the engine, remove the key, and wait for all moving parts to stop before leaving the operating position.

3. Install the boot onto the mower by lifting the mower discharge chute and sliding the boot bracket between the grass deflector and the mower deck (Fig. 14).
4. Release the grass deflector. This will lock the boot in place behind the bolt heads (Fig. 14).

Note: The boot needs to fit snugly to the mower.

5. If the bolts are not positioned correctly to lock to boot in place, loosen the bolts, slide them to the correct position so that the deflector locks the boot in place (Fig. 14).

6. Tighten the bolts.

Note: The boot needs to fit the mower snugly.

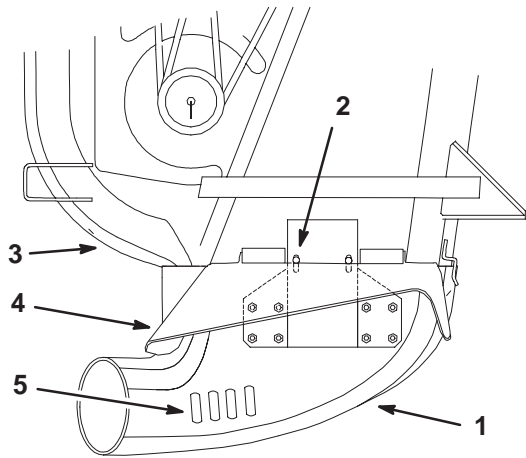


Figure 14

- 1. Boot
- 2. Bolts
- 3. Mower
- 4. Grass deflector
- 5. Slots in boot

Cutting the Discharge Tubes

Note: This procedure is only done for the initial setup.

1. Locate the two discharge tubes and cut the tubes to the correct length, refer to the following table.

Mower Size	Length A	Length B
60 inch	35-1/4 inches	16 inches
52 inch	32 inches	21 inches
48 inch	24 inches	25 inches
44 inch	26 inches	26 inches

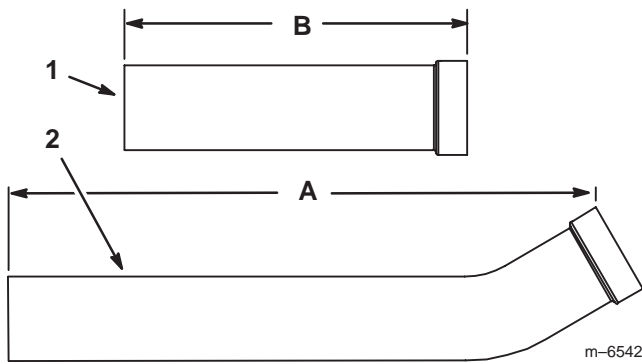


Figure 15

- 1. Straight tube
- 2. Upper tube (elbow)

Installing the Discharge Tubes

1. Disengage the PTO and set the parking brake.
2. Stop the engine, remove the key, and wait for all moving parts to stop before leaving the operating position.
3. Install the upper tube into the collector (Fig. 16).

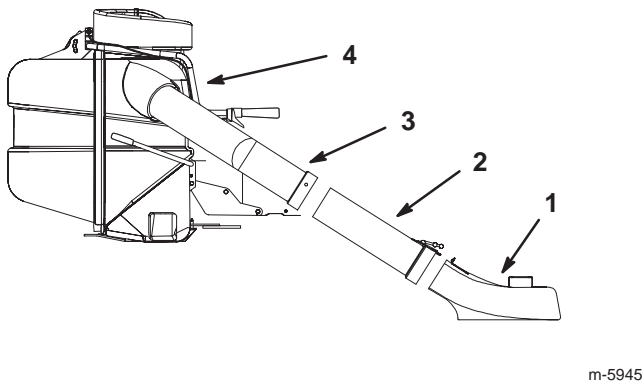


Figure 16

- 1. Boot
- 2. Straight tube
- 3. Upper tube
- 4. Collector

4. Install the straight tube onto the boot and secure it with the rubber latch (Fig. 18).
5. Install the upper tube onto the straight tube. Be sure both tubes are aligned (Fig. 17).
6. Using the upper tube as a template, mark the hole locations on the straight tube (Fig. 17).
7. Remove both tubes.
8. Drill 3 holes (9/32 inch dia.) into the straight tube (Fig. 17).

Important Make sure the bolt heads are on the inside of the middle tube.

9. Install the upper and straight tube with 3 carriage bolts (1/4 x 3/4 in.) and 3 flange nuts (1/4 in.) (Fig. 17).

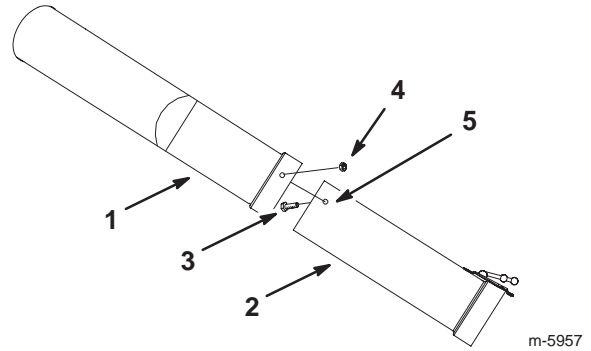


Figure 17

- 1. Upper tube
- 2. Straight tube
- 3. Bolt, 1/4 x 3/4 in.
- 4. Flange nut, 1/4 in.
- 5. 9/32 in. hole

10. Install the tube assembly into the collector (Fig. 16).

11. Install the tube assembly onto the boot and secure it with the rubber latch (Fig. 18).

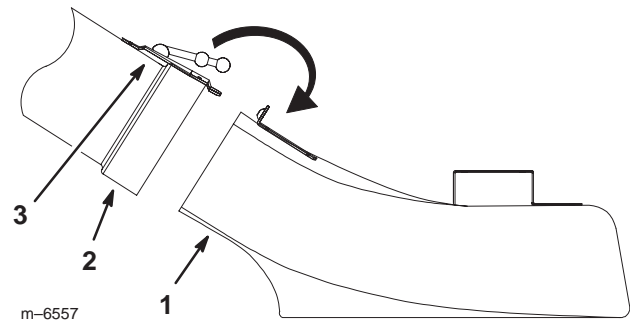


Figure 18

- 1. Boot
- 2. Straight tube
- 3. Rubber latch

Operation

Note: Determine the left and right side of the machine from the normal operating position.

Warning

To avoid personal injury, follow these procedures:

- Become familiar with all operating and safety instructions in the operator's manual for your mower before using this attachment.
- Never remove the collector or collector tubes while the engine is running.
- Always shut the engine off, remove the key, and wait for all moving parts to stop before clearing an obstruction from the bagging system.
- Never do maintenance or repairs while the engine is running.

Warning

Without the grass deflector, collector tubes or complete collector assembly mounted in place, you and others are exposed to blade contact and thrown debris. Contact with the rotating mower blade(s) and thrown debris will cause injury or death.

- Never remove the grass deflector from the mower because the grass deflector routes material down toward the turf. If the grass deflector is ever damaged, replace it immediately.
- Never put your hands or feet under the mower.
- Never try to clear the discharge area or mower blades unless you move the power take off (PTO) to *off* and turn the ignition key to *off*. Also remove the key and pull the wire off of the spark plug(s).

Emptying the Quiet Collector

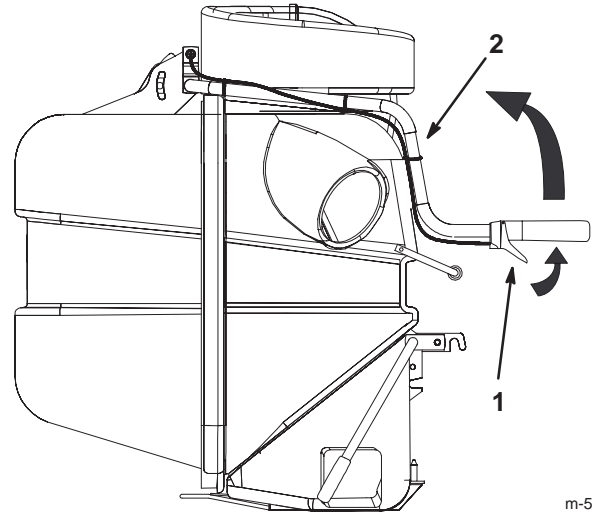
1. Disengage the quiet collector PTO control (Fig. 21).
2. Disengage the mower PTO and set the parking brake.

Note: If the PTO is engaged, it is impossible to open the collector due to the vacuum action inside.

3. Squeeze the collector lever on the collector arm (Fig. 19).

4. Raise the collector arm to the highest position and release the collector lever (Fig. 19). The locking pin will drop into a hole in the highest position.
5. Pull the collector arm down to raise the back of the collector (Fig. 19).
6. Close the back of the collector and squeeze the collector lever (Fig. 19).
7. Lower the collector arm to the working position (Fig. 19).

Note: Make sure the collector door is fully sealed before collecting grass.



m-5944

Figure 19

1. Collector lever
2. Collector arm

Holding the Collector Door Open

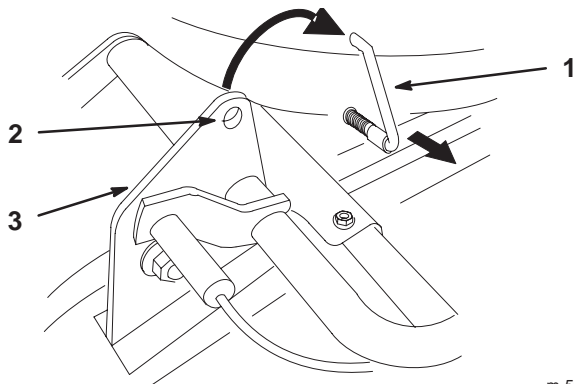
Warning

Hands, fingers and arms can get pinched between the back and front sections of the collector.

- Keep people away from collector while emptying it.
- If working on the inside, use the holding pin to hold the collector door open.

1. Disengage the quiet collector PTO control (Fig. 21).
2. Disengage the mower PTO and set the parking brake.
3. Stop the engine, remove the key, and wait for all moving parts to stop before leaving the operating position.

4. Open the collector; refer to Emptying the Quiet Collector, page 11.
5. With the collector open, pull out the holding pin and insert into the hole in the hinge (Fig. 20).



m-5961

Figure 20

- | | |
|------------------|----------|
| 1. Holding pin | 3. Hinge |
| 2. Hole in hinge | |

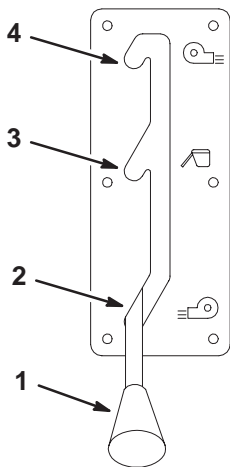
Clearing Obstructions From the Collector

1. Empty the collector.
2. Disengage the mower PTO and set the parking brake.
3. Stop the engine, remove the key, and wait for all moving parts to stop before leaving the operating position.
4. Remove the tube assembly from the collector.
5. Using a stick or similar object, carefully remove and clear the obstruction from the mower, upper tube, middle tube, or boot assembly.
6. After you remove the obstruction, install the complete collector system and resume operation. Refer to Installing the Discharge Tube on page 10.

Changing the Draft Control

The draft control is located on the left side of collector. There are three positions for the draft control: blow left, blow right or collecting.

1. To blow right, move the draft control to the lowest position (Fig. 21).
2. For collecting grass, move the draft control to the middle position (Fig. 21).
3. To blow left, move the draft control to the highest position (Fig. 21).



m-6545

Figure 21

- | | |
|----------------------------|---------------------------|
| 1. Collector Draft control | 3. Collect grass position |
| 2. Blow right position | 4. Blow left position |

Checking for Full Collector

1. To determine when the collector is full, use the following two methods.
 - A. Raise the gauge arm frequently (Fig. 22). If you feel resistance, it indicates the collector is full and needs to be emptied.
 - B. If grass is seen building up in the slots, on top of the boot (Fig. 14), the collector is full and needs to be emptied. This can also mean that you are mowing too fast and the boot is beginning to plug.

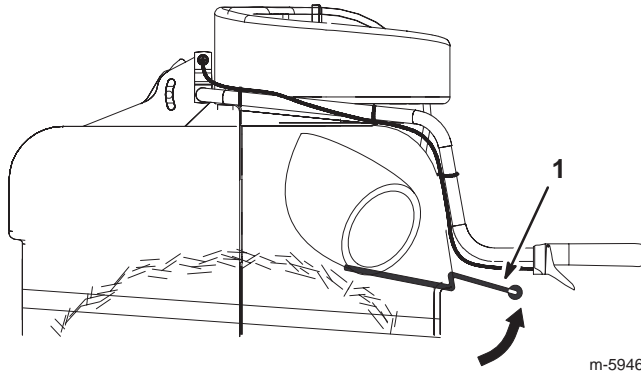


Figure 22

1. Gauge arm

Removing the Collector

2. Empty the collector; refer to Emptying the Quiet Collector, page 11.
3. Disengage the mower PTO and set the parking brake.
4. Stop the engine, remove the key, and wait for all moving parts to stop before leaving the operating position.
5. Unlatch the tube assembly from the boot (Fig. 16).
6. Remove the tube assembly from the collector (Fig. 16).
7. Remove the boot from the mower and the grass deflector (Fig. 14).



Warning



An uncovered discharge opening could allow the lawn mower to throw objects in the operator's or bystander's direction and result in serious injury. Also, contact with the blade could occur.

Never operate the lawn mower unless you install a grass deflector, a mulch plate, or discharge tubes and bagger.

8. Remove the collector belt (Fig. 12).
9. Remove the clevis pin and hairpin cotter from the left side of the collector (Fig. 11).
10. Unlatch the locking pin on the right-hand side of the collector (Fig. 11).
11. Remove the collector from the quick hitch (Fig. 11).

Operating and Bagging Tips

Size

Remember that the tractor is longer and wider with this attachment installed. By turning too sharply in confined places you may damage the attachment.

Trimming

Always trim with the left side of the mower. Do not trim with the right side of the mower because you could damage the collector's blower and discharge tube.

Cutting Height

Do not set the mower cutting height too low because long grass surrounding the mower can prevent air from getting under the mower and entering the bagging system. If enough air doesn't get under the mower, the bagging system will plug.

Cutting Frequency

Cut the grass often, especially when it grows rapidly. You will have to cut your grass twice if it gets excessively long (refer to Bagging Long Grass, page 14).

Cutting Technique

For best lawn appearance, be sure to slightly overlap the mower into the previously cut area. This helps reduce the load on the engine and reduces the chance of plugging the blower and discharge tube.

Bagging Speed

Most often you will bag with the tractor throttle in the **fast** position and drive at a normal ground speed. However, in extremely dry and dusty grass, you may want to slightly reduce throttle speed and increase ground speed of the tractor. The bagging system may plug if you drive too fast and the engine speed gets too slow. On hills it may be necessary to slow the tractor's ground speed. This helps maintain engine speed and bagging efficiency. Mow down hill whenever possible.



Caution



As the collector fills, extra weight is added to the back of the tractor. If you stop and start suddenly on hills, you may lose steering control or the tractor may tip.

- Do not start or stop suddenly when going uphill or downhill. Avoid uphill starts.
- If you do stop the tractor when going uphill, disengage the PTO (stop the mower blades) by pushing the PTO control to *off*. Then back down the hill using slow reverse speed.
- Do not change speeds or stop on slopes.

Bagging Long Grass

Excessively long grass is heavy and may not be propelled completely into the collector. If this happens, the discharge tube and blower may plug. To avoid plugging the bagging

system, mow the grass at a high height-of-cut, then lower the mower to your normal cutting height and repeat the bagging process.

Bagging Wet Grass

Always try to cut grass when it is dry because your lawn will have a neat appearance. If you must cut wet grass, use the conventional side discharge feature of the mower. Several hours later, when the clippings are dry, install the complete collector attachment and vacuum up the grass clippings.

Signs of Plugging

As you are bagging, a small amount of grass clippings normally blow out the front of the mower. An excessive amount of clipping blow-out indicates that the collector is full or the system is plugged. Also, grass may be seen building up inside the slot on top of the boot.

Maintenance

Note: Determine the left and right side of the machine from the normal operating position.

Recommended Maintenance Schedule

Maintenance Service Interval	Maintenance Procedure
Each Use	<ul style="list-style-type: none"> • Screen—clean
10 Hours	<ul style="list-style-type: none"> • Collector—clean
40 Hours	<ul style="list-style-type: none"> • Collector—check belt tension • Collector—inspect • Collector idler arms—oil/lubricate
Storage Service	<ul style="list-style-type: none"> • Collector idler arms—oil/lubricate • Belts—check for wear/cracks • Collector—belt tension • Collector—clean and inspect

Cleaning the Screen

The screen needs to be cleaned every 10 hours. In wet grass it will need to be cleaned more often.

1. Disengage the PTO and set the parking brake.
2. Stop the engine, remove the key, and wait for all moving parts to stop before leaving the operating position.

3. Open the collector and hold the collector door open. Refer to Holding the Collector Door Open on page 11.
4. Clean the debris from the screen.
5. Close the collector door.

Cleaning the Collector

The collector needs to be cleaned after each use.

1. Wash the inside and outside of the collector, upper tube, middle tube, boot assembly and the underside of the mower. Use a mild automotive detergent to remove dirt.
2. Make sure you remove matted grass from all parts.
3. After washing all parts, let them dry thoroughly.

Lubricating the Idler Arm

Lubricate the collector belt idler arms every 40 hours.

Inspecting the Collector

Inspect the collector attachment every 40 hours of operation.

1. Disengage the power take off (PTO), set the parking brake, turn the ignition key to off and remove the key.
2. Check the upper tube, middle tube, and the boot assembly. Replace these parts if they are cracked or broken.
3. Check the collector and screens. Replace any parts that are cracked or broken.

4. Tighten all nuts bolts and screws.

Inspecting the Mower Blades

1. Inspect the mower blades regularly and whenever a blade strikes a foreign object.
2. If blades are badly worn or damaged, install new blades. Refer to your mower operator's manual for complete blade maintenance.

Storage

1. Clean the collector attachment. Refer to Cleaning Obstructions from the Collector on page 12.
2. Inspect the collector attachment for damage. Refer to Inspecting the Collector on page 15.
3. Make sure the collector is empty and thoroughly dry.
4. Check the belt for wear or cracks.
5. Store the machine in a clean, dry place, out of direct sunlight. This protects the plastic parts and extends the life of the machine. If you must store the machine outside, cover it with a weatherproof cover.

Troubleshooting

Problem	Possible Causes	Corrective Action
Abnormal vibration.	<ol style="list-style-type: none"> 1. Cutting blade(s) is/are bent or unbalanced. 2. Blade mounting bolt is loose. 3. Loose collector pulley or pulley assembly. 4. Collector belt is worn or damaged. 5. Bagger impeller is out of balance. 	<ol style="list-style-type: none"> 1. Install new cutting blade(s). 2. Tighten blade mounting bolt. 3. Tighten the appropriate pulley. 4. Replace the collector belt. 5. Contact Authorized Service Dealer.

Problem	Possible Causes	Corrective Action
Reduced bagging performance.	<ol style="list-style-type: none"> 1. Low engine speed. 2. Plugged fan screen. 3. Loose collector belt. 4. Broken seal between hopper and rear door. 5. A plugged boot. 6. Improper seal around the upper tube going into the hopper. 7. Full hopper. 	<ol style="list-style-type: none"> 1. Always operate the collector at full throttle. 2. Remove debris, leaves or grass clippings from the fan screen. 3. Check the collector belt tension. 4. Ensure the rear door is latched. 5. Locate and remove plugged debris. 6. Ensure that there is a good seal at hopper. 7. Empty hopper.
Boot and tubes plug too frequently.	<ol style="list-style-type: none"> 1. Hopper is too full. 2. Grass is too wet. 3. Grass is too long. 4. Plugged fan screen. 5. Ground speed is too fast. 	<ol style="list-style-type: none"> 1. Dump more frequently. 2. Cut grass when dry. 3. Cut the grass twice. Once in a high height—of—cut and next in a normal height. 4. Remove debris, leaves or grass clippings from the fan screen. 5. Drive slower at full throttle.
Debris blowout.	<ol style="list-style-type: none"> 1. Hopper is too full. 2. Ground speed is too fast. 3. Grass build up on slots in boot. 	<ol style="list-style-type: none"> 1. Dump more frequently. 2. Drive slower at full throttle. 3. Drive slower at full throttle or the collector is full.