



**Count on it.**

**Parts Catalog**

**Flex-Force Power System™ 60V  
MAX 43cm Lawn Mower**

Model No. 21844—Serial No. 322000001 and Up



# Ordering Replacement Parts

To order replacement parts, please supply the part number, the quantity, and the description of each part desired.

## Understanding Reference Numbers

Each identified part in an illustration has a reference number. The reference number for a part also appears in the parts list, along with other information about the part.

This catalog uses two special reference number formats, one to indicate parts in a service assembly and another to indicate the quantity of a given part in an illustration.

## Service Assembly Reference Numbers

Parts in service assemblies have reference numbers in the form a:b. The a represents the reference number of the entire service assembly and the b represents a sequential number unique to each part within the service assembly.

For example, a wheel assembly might be identified by reference number 6, the tire by 6:1, the valve by 6:2, and the wheel by 6:3. When you order the assembly identified by reference number 6, you receive all parts identified by reference numbers 6:1, 6:2, and 6:3. However, you may also order any part individually. Reference numbers of this type appear in illustration and in parts lists.

## Reference Numbers Indicating Quantity

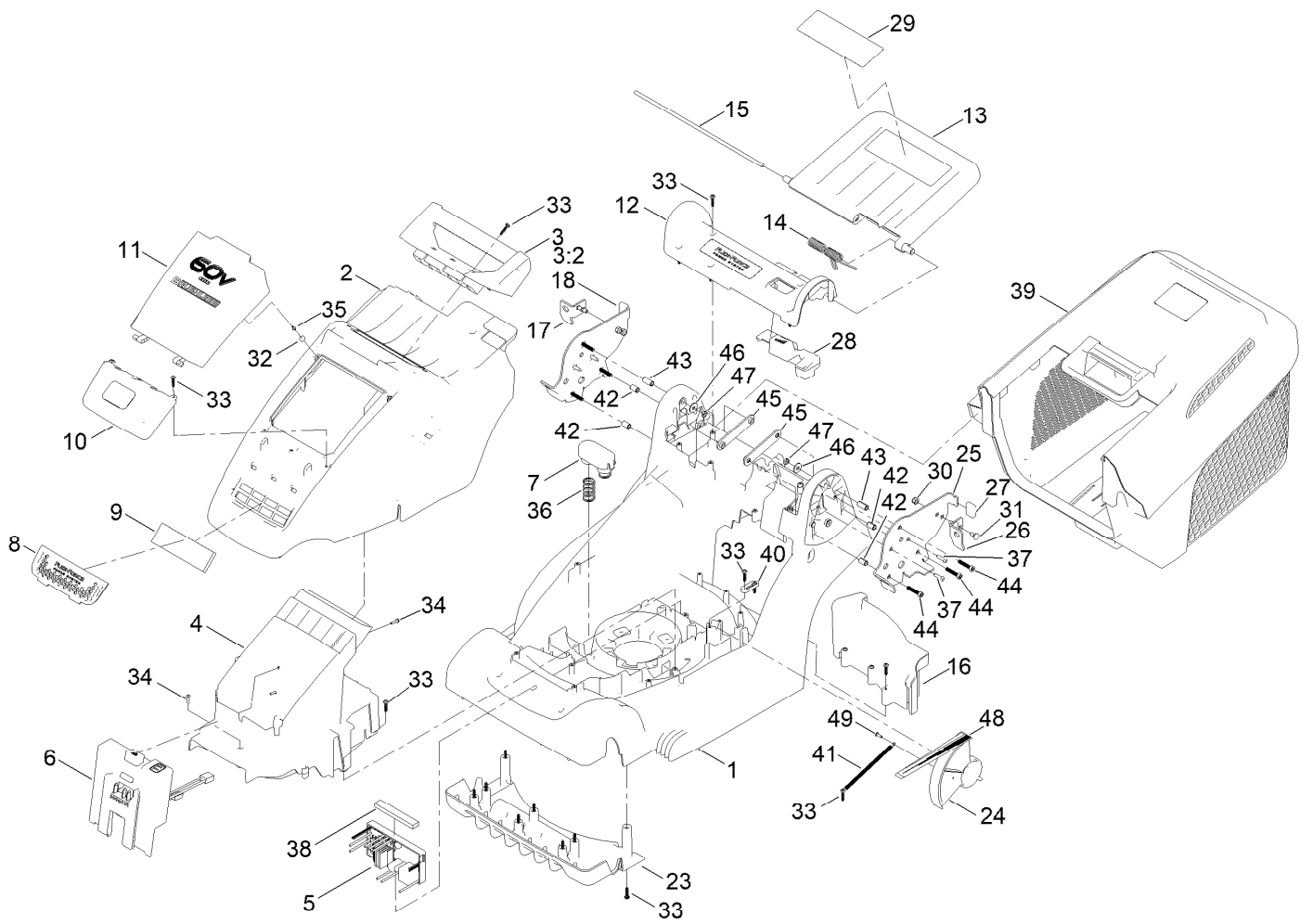
In an illustration, if a reference number indicates more than one part, the reference number has the form nX y. The n represents the quantity of the part, the X is the multiplication symbol, and the y represents the reference number.

For example, in an illustration, the reference number 2X 37 means that two of the parts identified by reference number 37 are indicated.

# Contents

Deck and Grass Bag Assembly .....	4
Battery Interface Assembly No. 134-4105 .....	6
Grass Box Assembly No. 134-6362 .....	8
Motor Module and Blade Assembly .....	10
Traction and Height-of-Cut Assembly .....	12
Handle Bar Control Assembly .....	14
Handle Bar Control Assembly No. 134-6355 .....	16
Attachments and Accessories .....	18

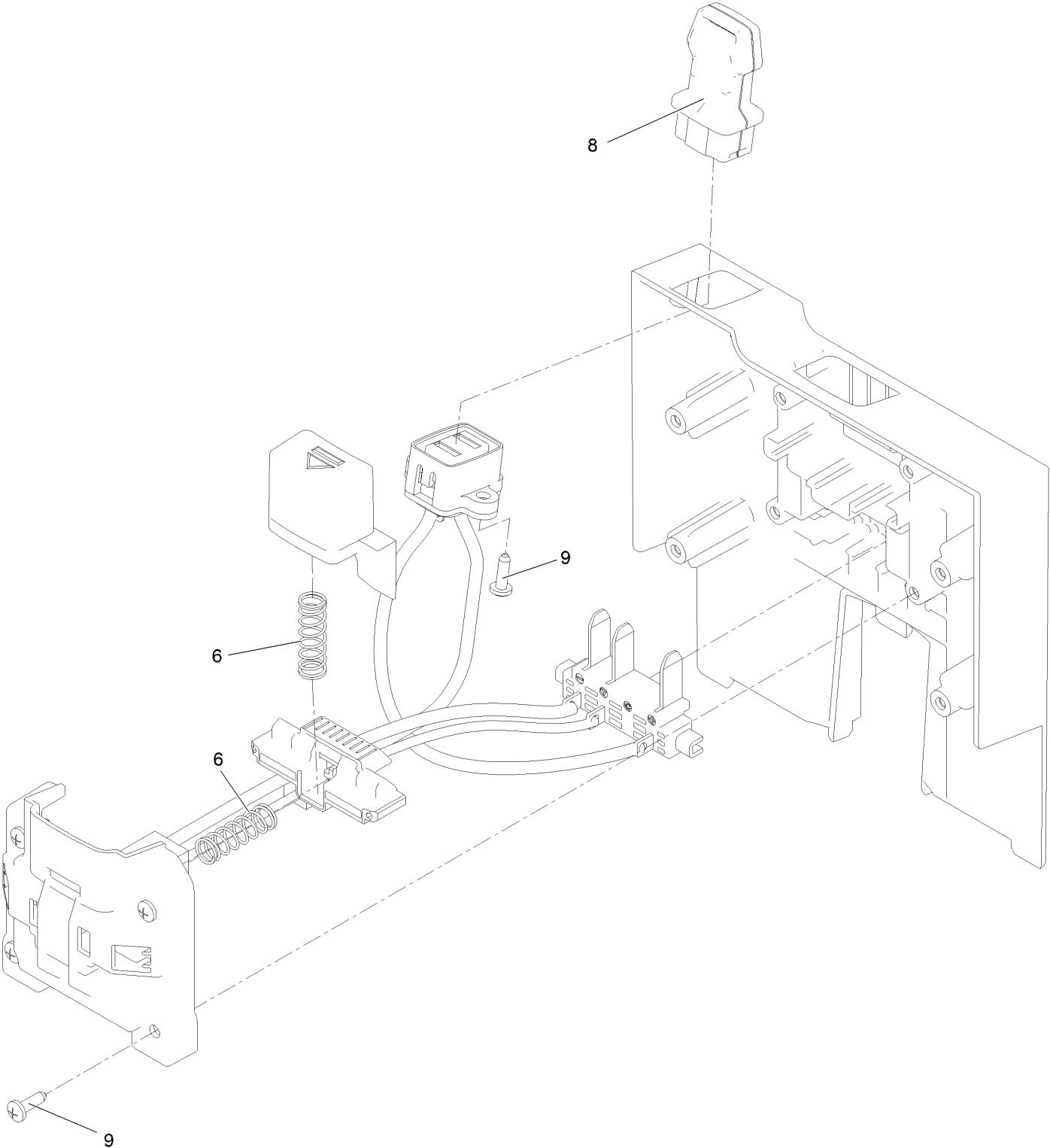
# Deck and Grass Bag Assembly



## Deck and Grass Bag Assembly (continued)

<i>Ref.</i>	<i>Part Number</i>	<i>Qty.</i>	<i>Description</i>	<i>Ref.</i>	<i>Part Number</i>	<i>Qty.</i>	<i>Description</i>
1	134-4441	1	Deck	26	134-5175	1	Bracket, V-Stow, Left
2	134-5303	1	Top Cover	27	134-4434	2	Rubber Foot-V-Stow
3	134-5312	1	Carry Handle ASM	28	134-5300	1	HOC Button
3:2	134-5411	1	Artwork - 43CM	29	134-4550	1	Decal-Safety, 60V
4	134-4450	1	Battery Holder	30	134-5234	4	Nut-Hex
5	134-4378	1	Driver-Motor, Self Propelled	31	134-5235	4	Bolt-Carriage
5	134-4436	1	Driver-Motor, Push	32	114-5896	2	Magnet
6	134-4105	1	Battery Interface Assembly	33	134-7001	32	Screw-T
7	134-4372	1	Battery Spring Cover	34	111-9903	5	Screw
8	134-4322	1	Air Inlet Grill-Toro	35	134-4375	2	Screw-Txph
9	134-4341	1	Inner Filter-Foam	36	134-4371	2	Spring, Battery Eject
10	134-5316	1	Battery Door Lower, Printed	37	134-5431	10	Screw-T
11	134-5313	1	Battery Door, Printed	38	134-5432	1	Filter, Air-Control Board
12	134-4443	1	HOC Cover	39	134-6362	1	Grass Box ASM
13	134-5302	1	Rear Deflector	40	134-6367	1	Tab
14	134-4037	1	Spring, Rear Deflector	41	134-6356	1	Spring
15	134-4302	1	Rod, Rear Flap	42	134-6369	4	Bush
16	134-6352	1	Grass Shield (43)	43	134-6374	2	Bush
17	134-5177	1	Bracket, V-Stow, Right	44	134-6371	6	Screw-Tsh
18	134-4398	1	Mount Plate, Handlebar, Right	45	134-6370	2	Brace-Bar
23	134-4100	1	Front Fins	46	134-5439	2	Washer-Plain
24	134-6037	1	HOC Dial, Printed	47	134-6376	2	Nut-Hex
25	134-4396	1	Mount Plate, Handlebar, Left	48	134-6817	1	Decal - HOC (Toro 43CM)
				49	134-5361	1	Screw-T

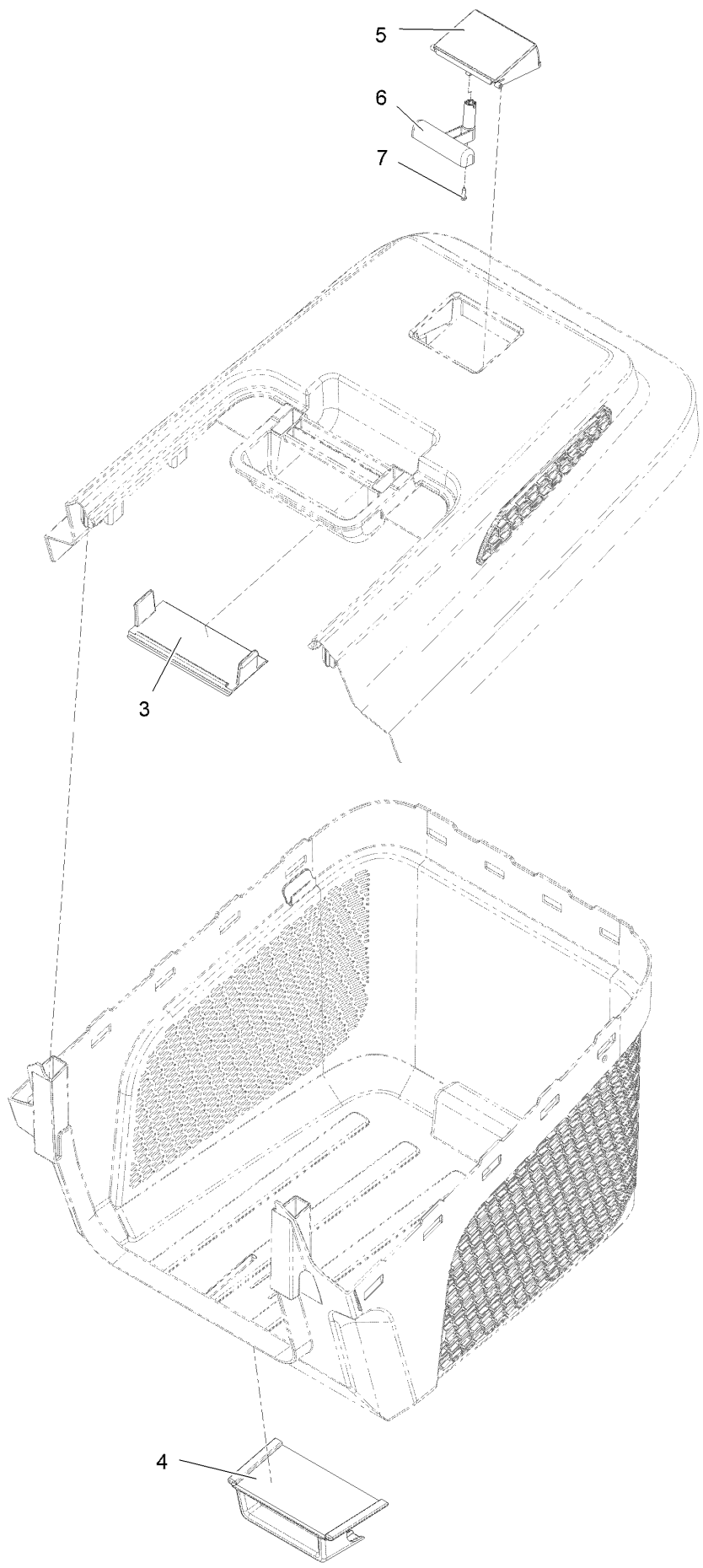
# Battery Interface Assembly No. 134-4105



# Battery Interface Assembly No. 134-4105 (continued)

<i>Ref.</i>	<i>Part Number</i>	<i>Qty.</i>	<i>Description</i>
6	134-5362	2	Spring, Battery Latch
8	134-4385	1	Power Key
9	134-5361	6	Screw-T

# Grass Box Assembly No. 134-6362

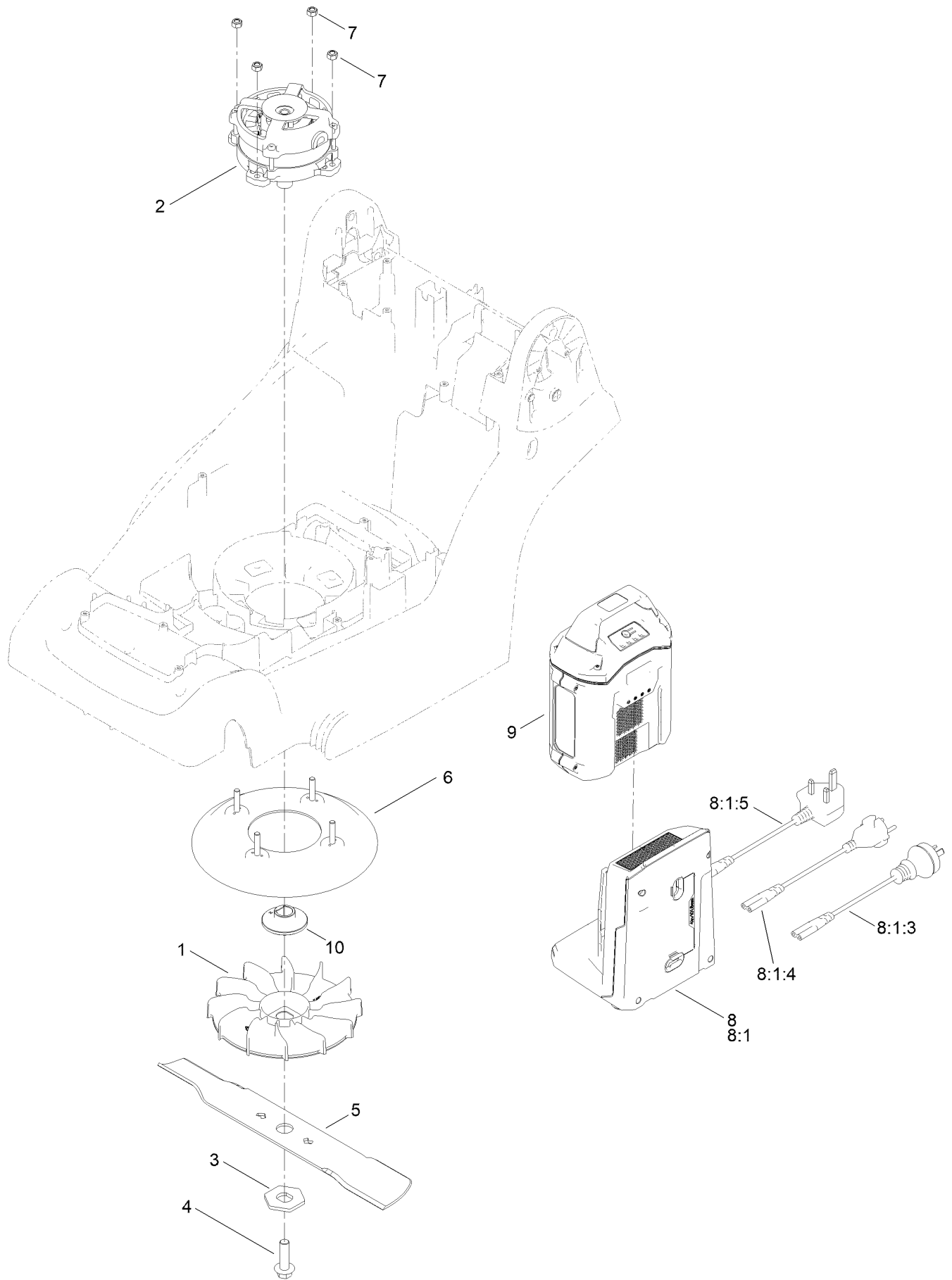




## Grass Box Assembly No. 134-6362 (continued)

<i>Ref.</i>	<i>Part Number</i>	<i>Qty.</i>	<i>Description</i>	<i>Ref.</i>	<i>Part Number</i>	<i>Qty.</i>	<i>Description</i>
3	134-4141	1	Grass Box Handle Infill	6	134-5430	1	Counter Weight
4	134-4388	1	Grass Box Hook	7	134-5435	1	Screw-T
5	134-4143	1	Grass Box Full Indicator				

# Motor Module and Blade Assembly

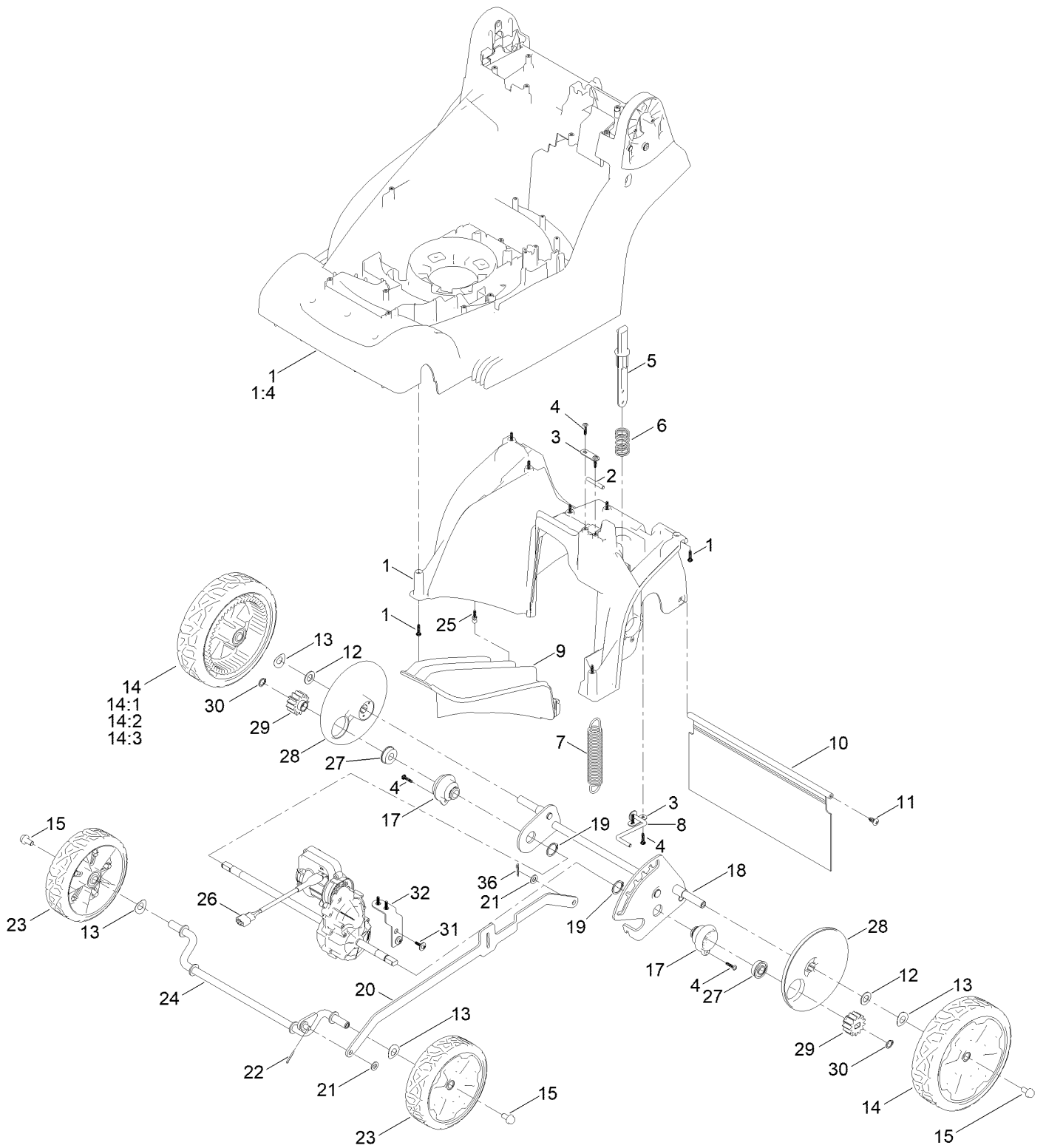


## Motor Module and Blade Assembly (continued)

<i>Ref.</i>	<i>Part Number</i>	<i>Qty.</i>	<i>Description</i>	<i>Ref.</i>	<i>Part Number</i>	<i>Qty.</i>	<i>Description</i>
1	134-8648	1	Fan, Square Hole	8:1		1	60V Charger 2 Amp ●
2	134-4101	1	Motor, Brushless, 60V, 850W	8:1:3	140-2192	1	Cord-Charger, Au/Nz
3	134-8649	1	Washer, Hex	8:1:4	140-2193	1	Cord-Charger, CE
4	134-4383	1	Blade Bolt	8:1:5	140-2194	1	Cord-Charger, Uk
5	134-5199	1	Blade, Mulch, 43CM	9	81850	1	Battery-Li-Ion, 60V 4.0Ah, CE
5	134-5255	1	Blade, 43CM	9	CODE104A	1	Battery-Li-Ion, 60V 4.0Ah, CE, Hytr
6	134-4024	1	Blade Cover	10	134-8647	1	Boss, Blade Sintered
7	134-4467	4	Nut-Hex				
8	139-8291	1	60V Charger CE				
8	CODE120A	1	60V Battery Charger 2 Amp CE Hayter				

● Not serviced separately

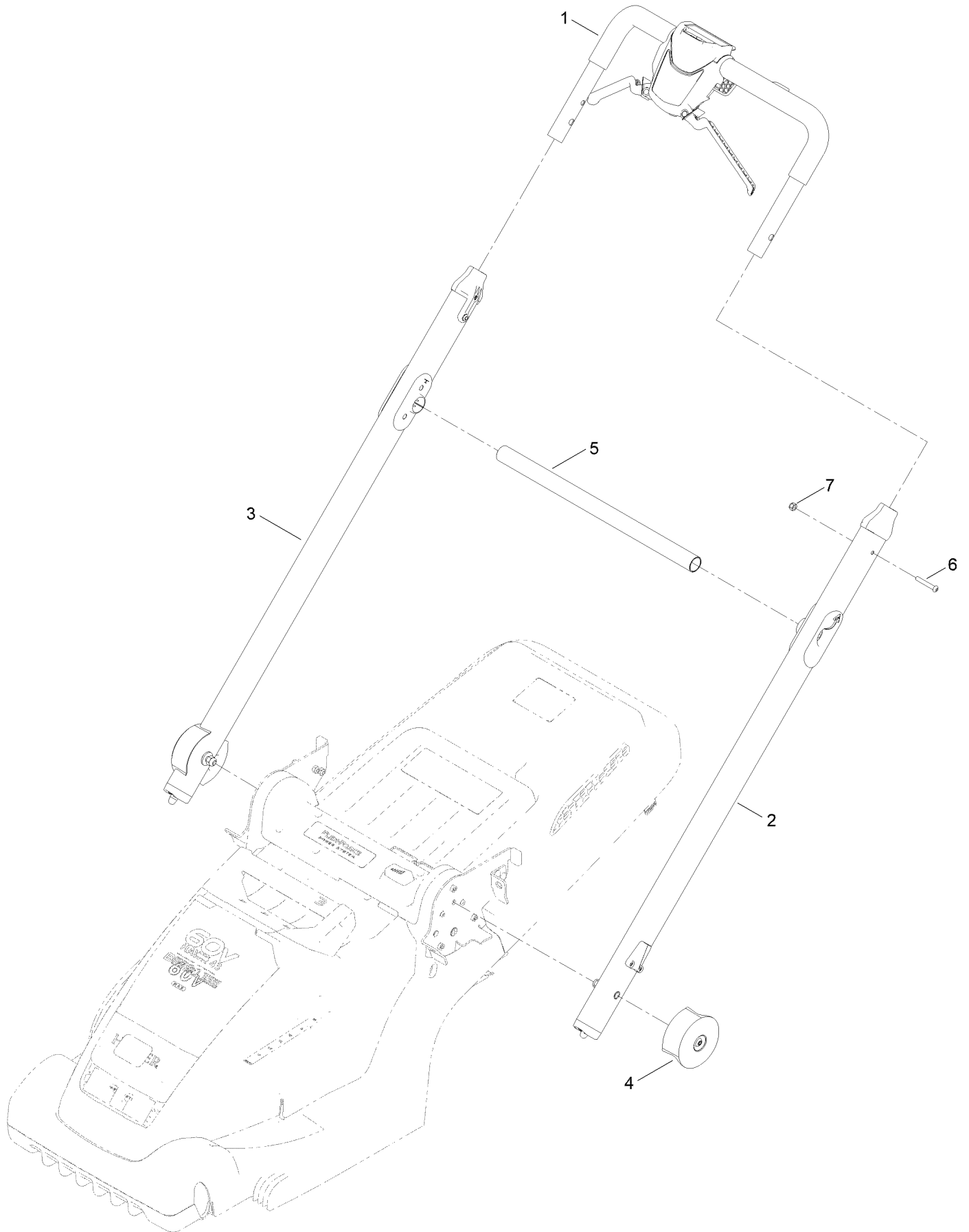
# Traction and Height-of-Cut Assembly



## Traction and Height-of-Cut Assembly (continued)

<i>Ref.</i>	<i>Part Number</i>	<i>Qty.</i>	<i>Description</i>	<i>Ref.</i>	<i>Part Number</i>	<i>Qty.</i>	<i>Description</i>
1	134-6914	1	Deck, Glued (43)	17	134-4452	2	Bearing Mount
1:4	134-5099	1	Decal - Safety	18	134-4050	1	Rear Axle Frame, Assy, Wheel
2	134-4096	1	Bar, Spring Mount	19	134-4435	2	Circlip, EXT
3	134-4394	2	Axle Plate, Small	20	134-4029	1	Con-Rod, 4 Wheel
4	134-7001	4	Screw-T	21	106-4756	1	Washer-Plain
5	134-4319	1	HOC Button Plunger	22	134-4454	1	Cotter Pin
6	134-4088	1	Spring, HOC Button	23	134-4307	2	Wheel-Toro Front Assembly
7	134-4092	1	HOC Spring, 4 Wheel	24	134-4312	1	Front Axle, Assembly
8	134-7568	1	HOC Wire ASM	25	134-5294	2	Pin, Retaining, Mulch Plug
9	134-5295	1	Mulch Plug	26	134-4102	1	Transmission, 4-Wheel
10	134-4437	1	Shield-Trailing	27	104-8699	2	Bearing-Ball
11	117-1092	2	Screw-PTH	28	134-4033	2	Inner Cover, Rear Wheel
12	ZWP1L000U	2	Washer-Plain	29	134-5214	2	Gear-Pinion, 13T
13	134-4457	4	Washer-Wave	30	32151-61	2	Ring-Retaining
14	134-4363	2	Wheel-Rear Assembly	31	134-4476	4	Screw-T
14:1	134-4404	1	Wheel-Toro Rear	32	134-4391	1	Bracket, Gearbox, 4-Wheel
14:2	134-4377	2	Bearing	36	134-6827	1	Cotter Pin
14:3	134-4366	1	Rear Wheel Trim - Toro				
15	134-4358	3	Bolt-HF				

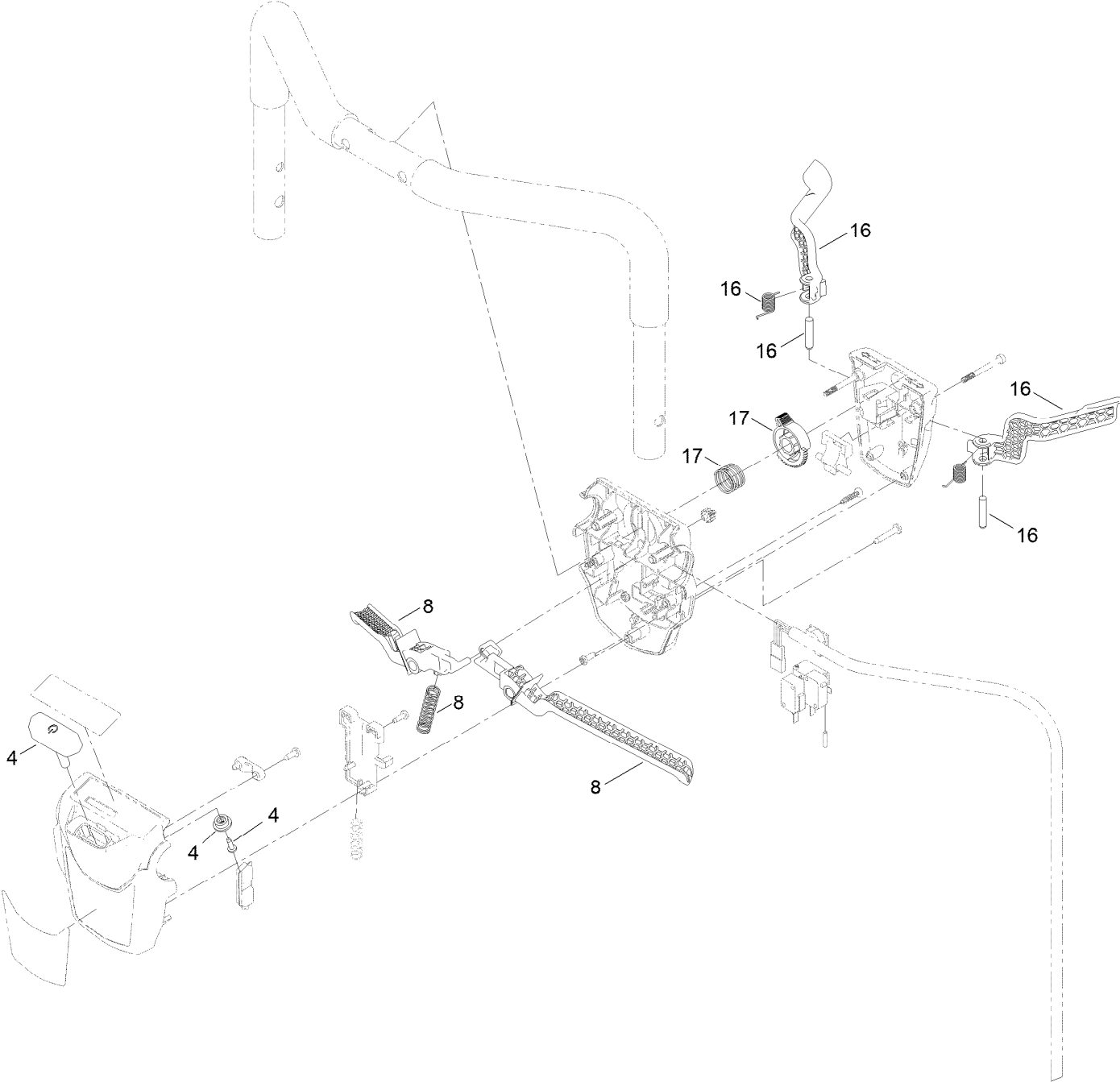
# Handle Bar Control Assembly



## Handle Bar Control Assembly (continued)

<i>Ref.</i>	<i>Part Number</i>	<i>Qty.</i>	<i>Description</i>	<i>Ref.</i>	<i>Part Number</i>	<i>Qty.</i>	<i>Description</i>
1	134-6355	1	Control Lever ASM, Propelled	4	134-4416	2	Handlebar End Cap
2	134-6353	2	Handlebar ASM, LH	5	134-4458	1	Brace, Handlebar Release
3	134-6354	2	Handlebar ASM, RH	6	134-5206	2	Bolt-P
				7	134-5234	2	Nut-Hex

# Handle Bar Control Assembly No. 134-6355





## Handle Bar Control Assembly No. 134-6355 (continued)

<i>Ref.</i>	<i>Part Number</i>	<i>Qty.</i>	<i>Description</i>
4	134-6903	1	Top Button Kit
8	134-6904	1	Upper Lever Kit (43)

<i>Ref.</i>	<i>Part Number</i>	<i>Qty.</i>	<i>Description</i>
16	134-6909	2	Lower Lever Kit
17	134-6907	1	Speed Controller Wheel Kit

# Attachments and Accessories

## For 21844 Flex-Force Power System 60V MAX 43cm Lawn Mower

<b>Product Name</b>	<b>Model/Part</b>
60V 2.5 AH Battery CE .....	81825
60V 4.0 AH Battery CE .....	81850
60V 6.0 AH Battery CE .....	81860
60V 7.5 AH Battery CE .....	81875
60V Battery Charger 2 Amp CE .....	81802
60v Battery Charger 5 Amp International .....	81805

## For 21844 Flex-Force Power System 60V MAX 43cm Lawn Mower

<b>Product Name</b>	<b>Model/Part</b>
60V 2.5 AH Battery CE .....	81825
60V 4.0 AH Battery CE .....	81850
60V 6.0 AH Battery CE .....	81860
60V 7.5 AH Battery CE .....	81875
60V Battery Charger 2 Amp CE .....	81802
60v Battery Charger 5 Amp International .....	81805

**Notes:**



**Count on it.**