



Wing–Deck Drive Belt Clutch Kit

Groundsmaster® 455–D

Model No. 106–1054

Parts Catalog

Ordering Replacement Parts

To order replacement parts, please supply: the part number, the quantity, and the description of each part desired.

Understanding Reference Numbers

Each identified part in an illustration has a reference number. The reference number for a part also appears in the parts list, along with other information about the part.

This catalog uses two special reference number formats, one to indicate parts in a service assembly and another to indicate the quantity of a given part in an illustration.

Service Assembly Reference Numbers

Parts in service assemblies have reference numbers in the form **a:b**. The **a** represents the reference number of the entire service assembly and the **b** represents a sequential number unique to each part within the service assembly.

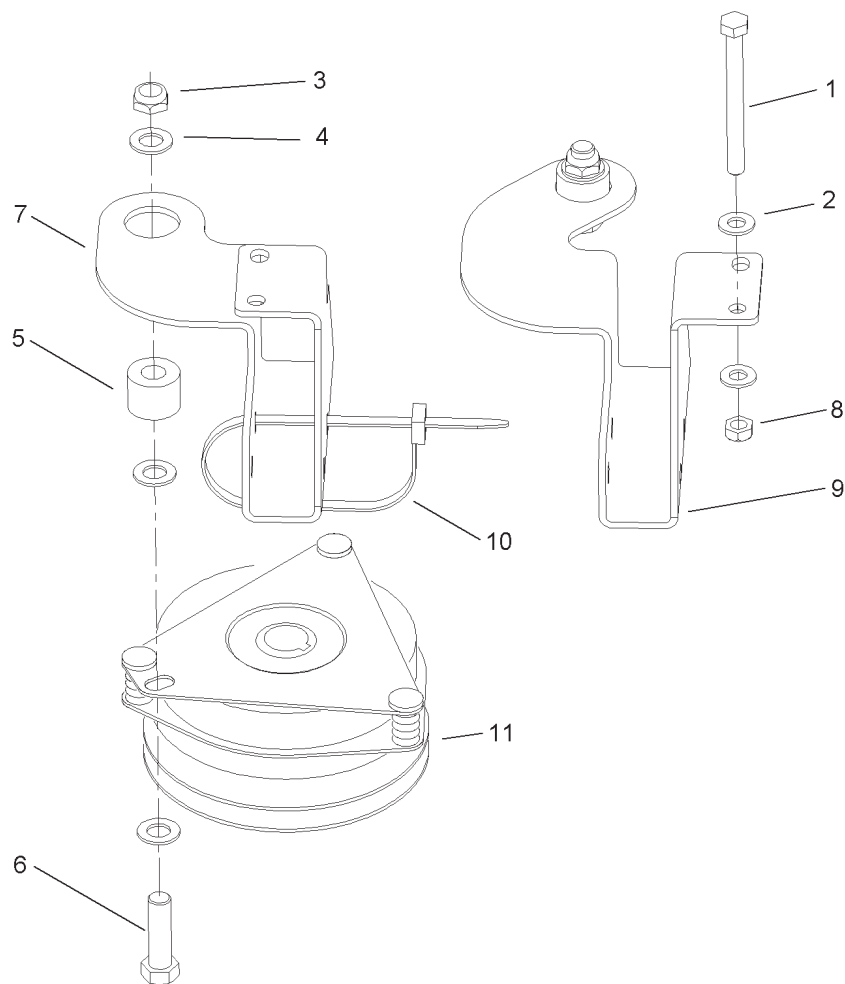
For example, a wheel assembly might be identified by reference number **6**, the tire by **6:1**, the valve by **6:2**, and the wheel by **6:3**. When you order the assembly identified by reference number **6**, you receive all parts identified by reference numbers **6:1**, **6:2**, and **6:3**. However, you may also order any part individually.

Reference numbers of this type appear in illustrations and in part lists.

Reference Numbers Indicating Quantity

In an illustration, if a reference number indicates more than one part, the reference number has the form **nX y**. The **n** represents the quantity of the part, the **X** is the multiplication symbol, and the **y** represents the reference number.

For example, in an illustration, the reference number **2X 37** means that two of the parts identified by reference number **37** are indicated.

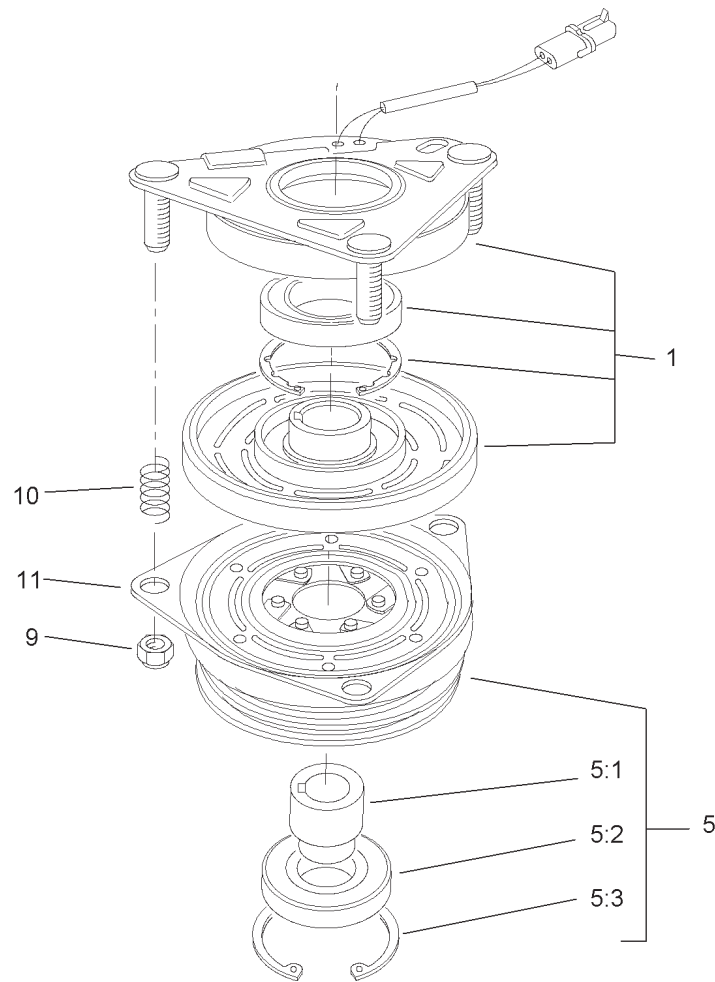


Sheet No.:0

Clutch Kit Assembly

Ref. No.	Part No.	Qty.	Description
1	322-20	4	Screw-HH
2	3256-23	8	Washer-Flat
3	3296-38	2	Nut-Lock NI
4	94-5858	6	Washer
5	106-1055	2	Spacer-Tubular
6	3212-6	2	Screw-HH
7	106-1047-03	1	Bracket-Clutch, RH
8	3296-47	4	Nut-Lock, NI
9	106-1046-03	1	Bracket-Clutch, LH
10	3290-378	2	Tie-Cable
11	106-1052	1	Electric Clutch-Brake ASM

Ref. No.	Part No.	Qty.	Description



Sheet No.:A1

Clutch-Brake Assembly No. 106-1052

Ref. No.	Part No.	Qty.	Description
1	67-7050	1	Field And Rotor ASM
5	92-0627	1	Armature ASM
5:1	67-7080	1	Sleeve-Bearing, Armature
5:2	67-7090	1	Bearing-Armature
5:3	67-7060	1	Ring-Retaining
9	3296-6	3	Nut-Lock, NI
10	44-8320	3	Spring
11	67-7100	1	Plate-Brake

