



## Groomer Kit

### Greensmaster<sup>®</sup> 3200 and 3250-D Cutting Units

Model No. 04485

## Parts Catalog

---

### Ordering Replacement Parts

To order replacement parts, please supply: the part number, the quantity, and the description of each part desired.

### Understanding Reference Numbers

Each identified part in an illustration has a reference number. The reference number for a part also appears in the parts list, along with other information about the part.

This catalog uses two special reference number formats, one to indicate parts in a service assembly and another to indicate the quantity of a given part in an illustration.

### Service Assembly Reference Numbers

Parts in service assemblies have reference numbers in the form **a:b**. The **a** represents the reference number of the entire service assembly and the **b** represents a sequential number unique to each part within the service assembly.

For example, a wheel assembly might be identified by reference number **6**, the tire by **6:1**, the valve by **6:2**, and the wheel by **6:3**. When you order the assembly identified by reference number **6**, you receive all parts identified by reference numbers **6:1**, **6:2**, and **6:3**. However, you may also order any part individually.

Reference numbers of this type appear in illustrations and in part lists.

### Reference Numbers Indicating Quantity

In an illustration, if a reference number indicates more than one part, the reference number has the form **nX y**. The **n** represents the quantity of the part, the **X** is the multiplication symbol, and the **y** represents the reference number.

For example, in an illustration, the reference number **2X 37** means that two of the parts identified by reference number **37** are indicated.

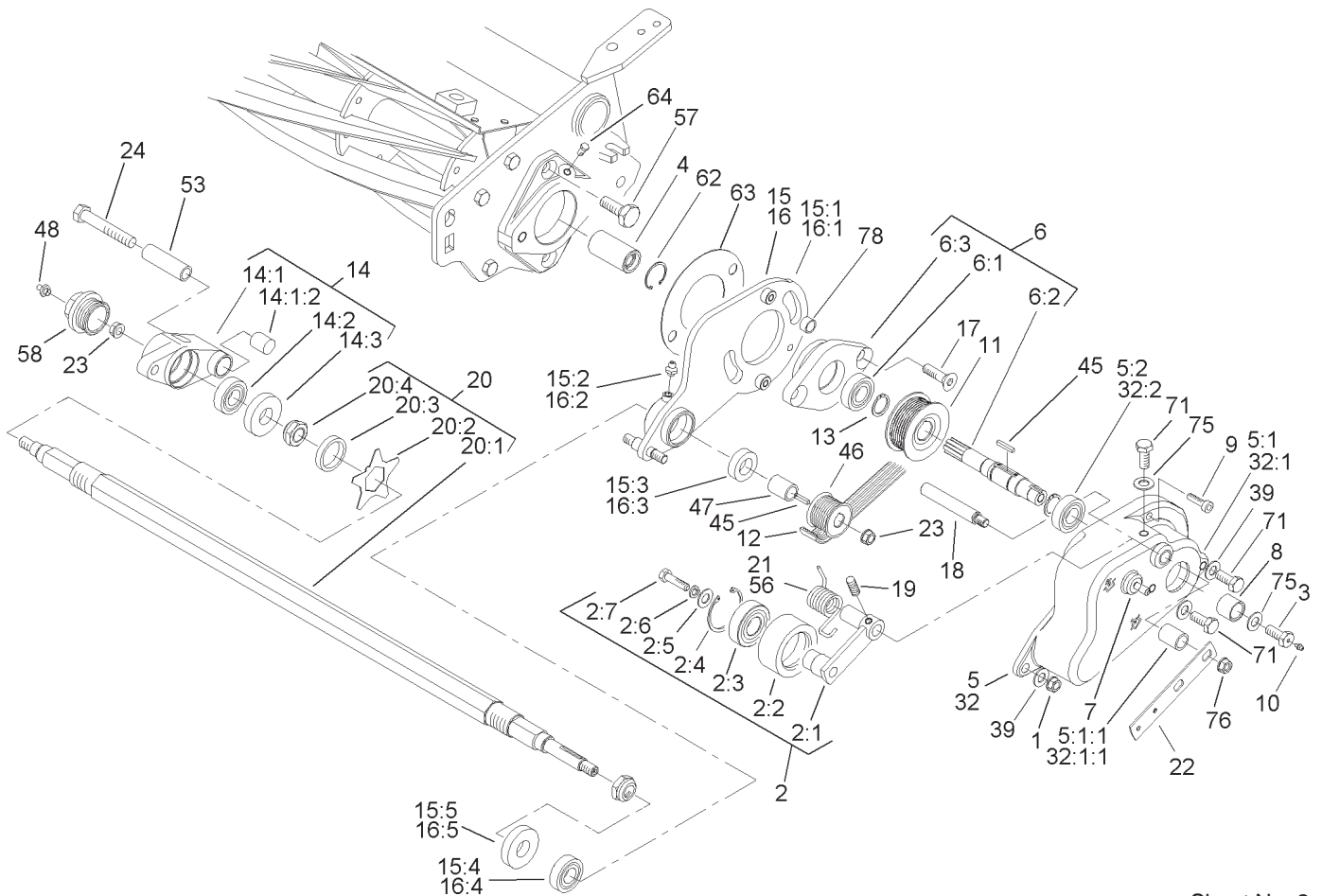
## Contents

<b>Description</b>	<b>Page</b>	<b>Description</b>	<b>Page</b>
Housing and Pivot Plate Assembly . . . . .	3	Full Roller Bracket and Groomer Extension Assembly . . . . .	5

## Part Description Abbreviations

Part descriptions in this catalog may include the following abbreviations.

<b>Abbreviation</b>	<b>Meaning</b>	<b>Abbreviation</b>	<b>Meaning</b>
AR . . . . .	as required	HYD . . . . .	hydraulic
ASM . . . . .	assembly	INC . . . . .	incorporated
CARR . . . . .	carriage	LH . . . . .	left hand
DEG . . . . .	degrees	NI . . . . .	nylon insert
FH . . . . .	flat head	PPH . . . . .	Phillips pan head
GA . . . . .	gauge	PTH . . . . .	Phillips truss head
HF . . . . .	hex flange	PTO . . . . .	power take off
HH . . . . .	hex head	RH . . . . .	right hand
HHF . . . . .	hex head flange	SFH . . . . .	slotted fillister head
HLH . . . . .	hex lag head	SHH . . . . .	slotted hex head
HJ . . . . .	hex jam	SQH . . . . .	square head
HOC . . . . .	height-of-cut	SHWH . . . . .	slotted hex washer head
HS . . . . .	hex socket	SPH . . . . .	slotted pan head
HSBH . . . . .	hex socket button head	SRH . . . . .	slotted round head
HSFH . . . . .	hex socket flat head	STD . . . . .	standard
HSH . . . . .	hex socket head	TAP . . . . .	self tapping
HWH . . . . .	hex washer head	TTH . . . . .	Torx truss head
HWHTF . . . . .	hex washer head thread forming	WH . . . . .	wing head



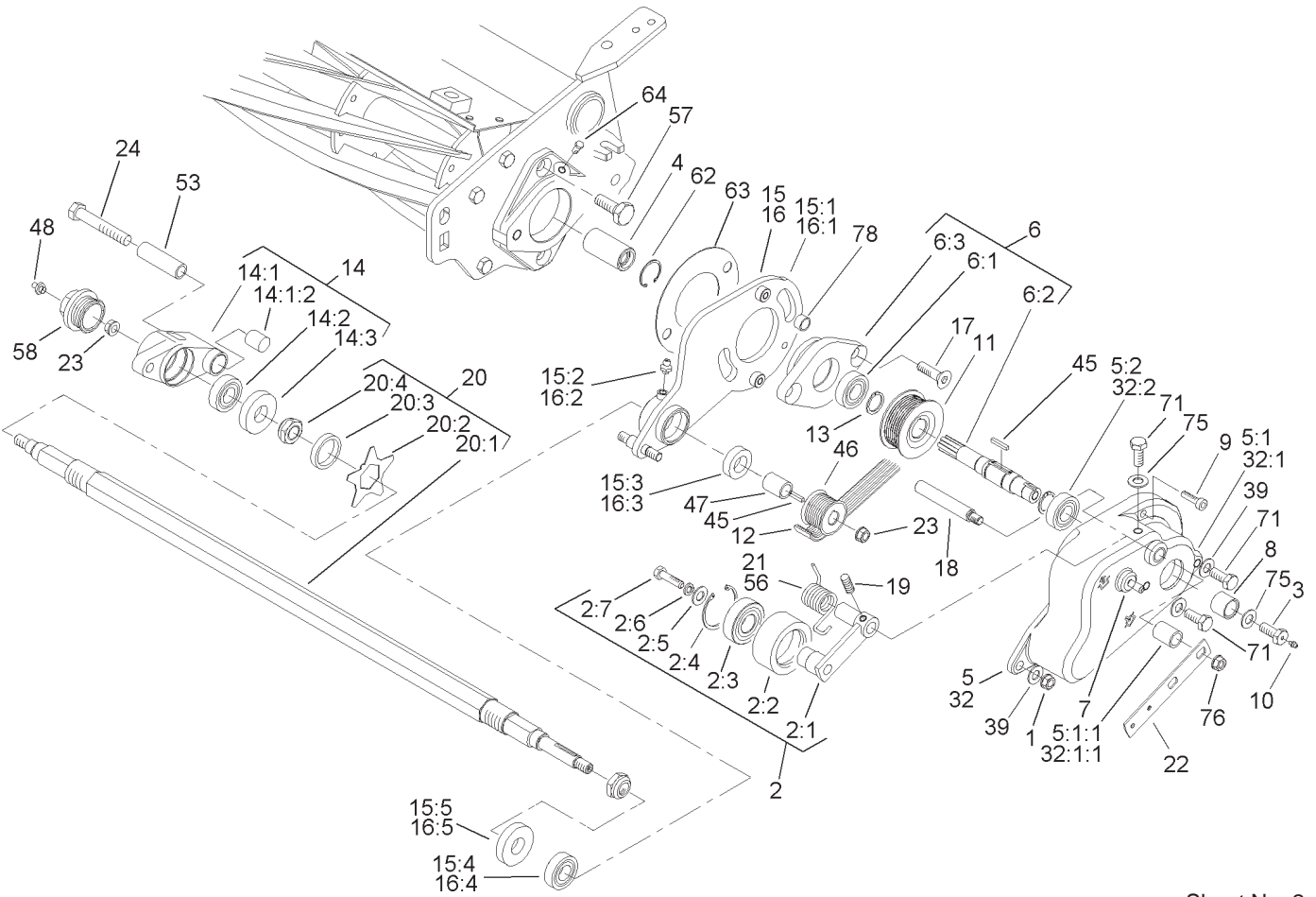
Sheet No.:2

## Housing and Pivot Plate Assembly

Ref. No.	Part No.	Qty.	Description
1	33024-00	3	Nut-Lock
☆2		3	Idler/Pulley & Bushing ASM
2:1	95-0703	1	Arm-Idler
2:2	95-0744	1	Pulley-Idler
2:3	38-7820	1	Bearing-Ball
2:4	32120-42	1	Ring-Retaining
2:5	88-7200	1	Washer-Flat
2:6	3253-4	1	Washer-Lock
2:7	33114-020	1	Screw-HH
3	95-2936	3	Capscrew
4	94-4507	3	Coupler-Splined
☆5		1	RH Housing & Bearing ASM
5:1	95-0716	1	Housing-Cover, RH
5:1:1	95-9617	2	Bushing-Bronze
5:2	251-336	1	Bearing-Ball
☆6		3	Pivot-Adapter, Shaft & Bearing
6:1	251-336	1	Bearing-Ball
6:2	95-0740	1	Shaft-Drive, Groomer
6:3	95-7141	1	Adapter-Plate, Pivot
7	95-5992	3	Pin-Dowel
8	95-6123	3	Spacer-Shaft, Drive
9	3274-101	6	Screw-Head, Socket
10	302-18	3	Fitting-Grease

Ref. No.	Part No.	Qty.	Description
11	95-0742	3	Pulley-Drive
12	95-0728	3	Belt-Drive, Poly-V
13	32151-12	6	Ring-Retaining
☆14		3	Hub / Bearing ASM
14:1	94-9230	1	Hub-Bearing
14:1:2	95-0709	2	Bushing-Oilite
14:2	95-0707	1	Bearing-Aligning, Self
14:3	95-0725	1	Seal-Grease
☆15		1	RH Pivot Plate & Bearing ASM
15:1	95-0710	1	Plate-Pivot
15:2	302-5	1	Fitting-Grease
15:3	95-9616	1	Seal
15:4	95-0707	1	Bearing-Aligning, Self
15:5	95-0725	1	Seal-Grease
☆16		2	LH Pivot Plate & Bearing ASM
16:1	95-0749	1	Plate-Pivot
16:2	302-5	1	Fitting-Grease
16:3	95-9616	1	Seal
16:4	95-0707	1	Bearing-Aligning, Self
16:5	95-0725	1	Seal-Grease
17	3289-26	6	Capscrew-HSFH
18	95-0739	3	Shaft-Idler, Pivot
19	3245-1	3	Screw-Set, HSH
☆20		3	Shaft / Blade ASM

☆ Not serviced separately



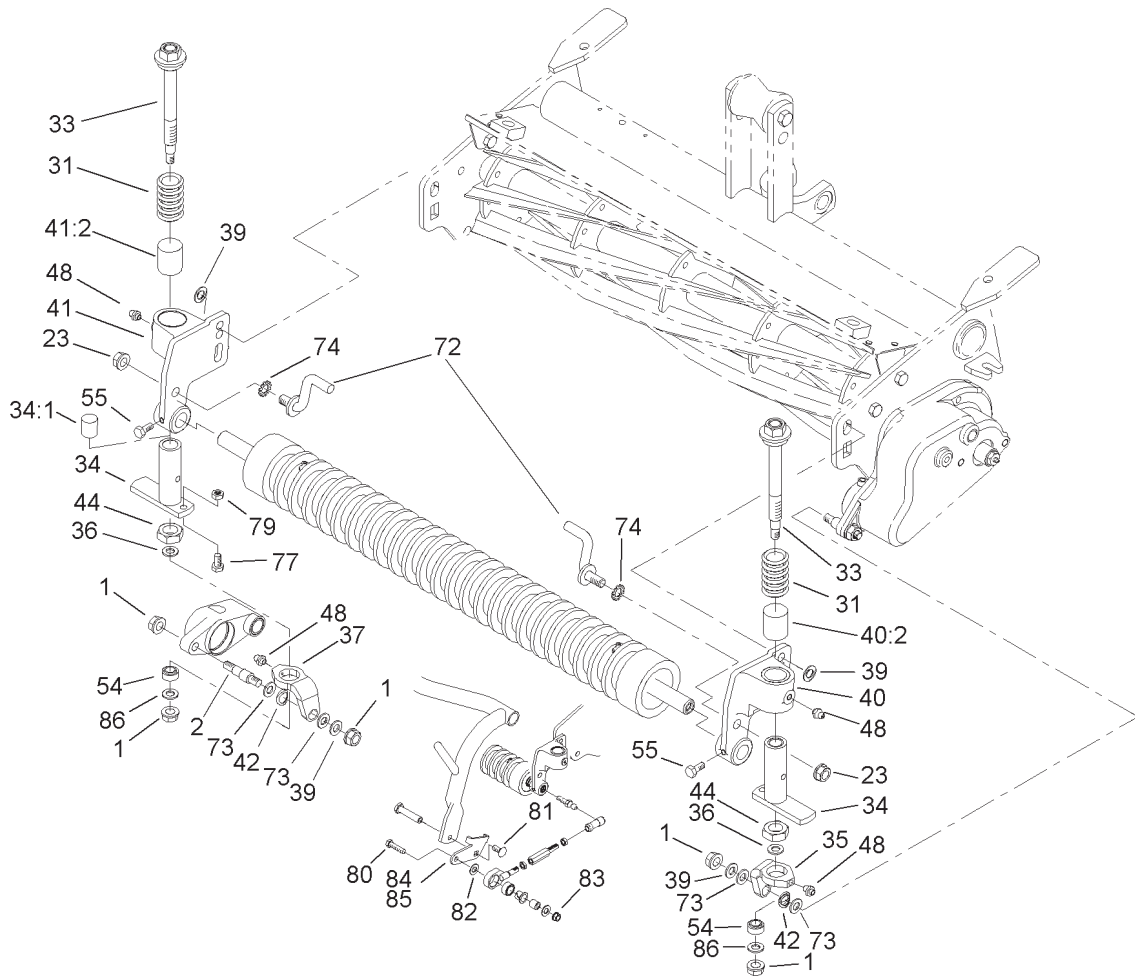
Sheet No.:2

## Housing and Pivot Plate Assembly (Continued)

Ref. No.	Part No.	Qty.	Description
20:1	98-1835	1	Shaft-Groomer
20:2	95-5719	41	Blade-Groomer
20:3	70-1350	84	Spacer
20:4	3296-60	2	Nut-Lock, NI
21	95-9614	1	Spring-Idler , Right
22	98-3584	3	Lever-Control
23	33025-00	6	Nut-Lock
24	33105-070	3	Screw-HHF
☆32		2	LH Housing & Bearing ASM
32:1	95-0724	1	Housing-Cover , LH
32:1:1	95-9617	2	Bushing-Bronze
32:2	251-336	1	Bearing-Ball
39	3256-23	9	Washer-Flat
45	95-9615	6	Key-Square
46	95-0743	3	Pulley-Driven
47	95-0733	3	Spacer-Pulley , Driven
48	302-5	3	Fitting-Grease
53	95-7002	3	Tube-Pivot, Bearing
56	95-7000	2	Spring-Idler , Left
57	95-0745	6	Screw-Tapered
58	95-7859	3	Plug-Cap
62	32120-37	3	Ring-Retaining
63	95-7009	3	Shim
64	302-59	3	Plug-Threaded
71	33114-008	8	Screw-HH

Ref. No.	Part No.	Qty.	Description
75	88-7200	5	Washer-Flat
76	98-0668	3	Nut
78	98-181 1	6	Spacer

☆ Not serviced separately



Sheet No.:3

## Full Roller Bracket and Groomer Extension Assembly

Ref. No.	Part No.	Qty.	Description
1	33024-00	15	Nut-Lock
2	95-7008	3	Pin-Dowel, Plated
23	33025-00	6	Nut-Lock
31	104-9412	6	Spring-Compression
33	95-0747	6	Adjustment Bolt ASM
34	104-941 1	6	Tube-Support, Adj.
34:1	98-9002	1	Bushing-Sleeve
35	105-9796	3	Bracket-Pivot, LH
36	610361	6	Washer-Plain
37	105-9797	3	Bracket-Pivot, RH
39	3256-23	12	Washer-Flat
40	104-9418	3	LH Roller Bracket ASM
40:2	104-9413	1	Bushing-Sleeve
41	104-9419	3	RH Roller Bracket ASM
41:2	104-9413	1	Bushing-Sleeve
42	95-7862	6	Washer-W ave, Spring
44	51-2070	6	Nut
48	302-5	12	Fitting-Grease
54	106-6353	6	Bushing-Spherical
55	33113-012	6	Screw-HH
72	95-0702	6	Rod-Adjustment
73	95-7863	12	Washer
74	3255-9	6	Washer-Lock, Ext
77	321-2	6	Screw-HH
79	3217-5	6	Nut-Hex

Ref. No.	Part No.	Qty.	Description
80	323-8	4	Screw-HH
81	3231-2	4	Screw-CARR
82	3256-4	4	Washer-Flat
83	3296-39	4	Nut-Lock, NI
84	99-4148	2	Bracket-Link, RH
85	99-4149	2	Bracket-Link, LH
86	3256-56	6	Washer-Flat





