



48in Snow/Dozer Blade

XT Series Garden Tractor

Model No. 79481–230000001 and Up

Parts Catalog

Ordering Replacement Parts

To order replacement parts, please supply: the part number, the quantity, and the description of each part desired.

Understanding Reference Numbers

Each identified part in an illustration has a reference number. The reference number for a part also appears in the parts list, along with other information about the part.

This catalog uses two special reference number formats, one to indicate parts in a service assembly and another to indicate the quantity of a given part in an illustration.

Service Assembly Reference Numbers

Parts in service assemblies have reference numbers in the form **a:b**. The **a** represents the reference number of the entire service assembly and the **b** represents a sequential number unique to each part within the service assembly.

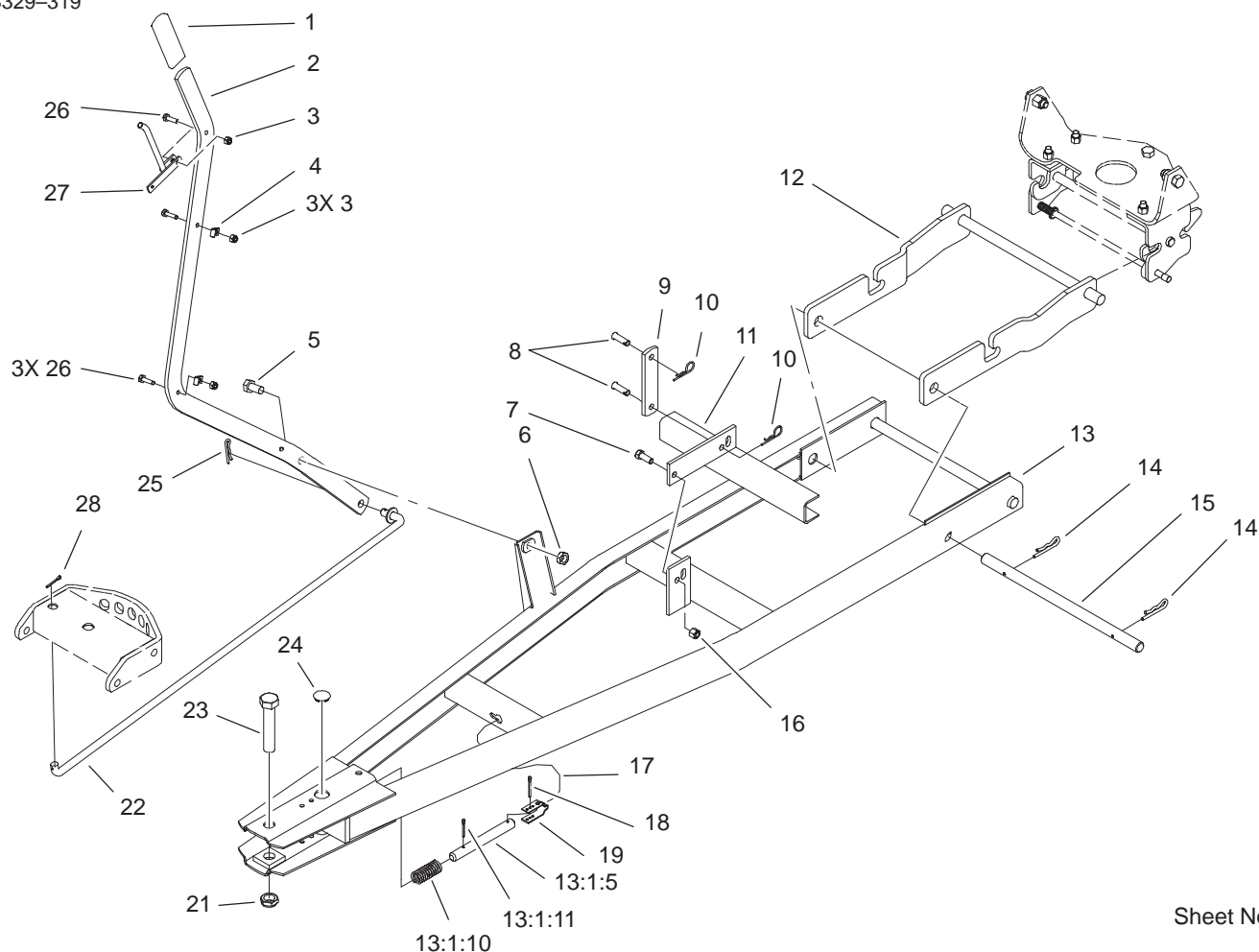
For example, a wheel assembly might be identified by reference number **6**, the tire by **6:1**, the valve by **6:2**, and the wheel by **6:3**. When you order the assembly identified by reference number **6**, you receive all parts identified by reference numbers **6:1**, **6:2**, and **6:3**. However, you may also order any part individually.

Reference numbers of this type appear in illustrations and in part lists.

Reference Numbers Indicating Quantity

In an illustration, if a reference number indicates more than one part, the reference number has the form **nX y**. The **n** represents the quantity of the part, the **X** is the multiplication symbol, and the **y** represents the reference number.

For example, in an illustration, the reference number **2X 37** means that two of the parts identified by reference number **37** are indicated.

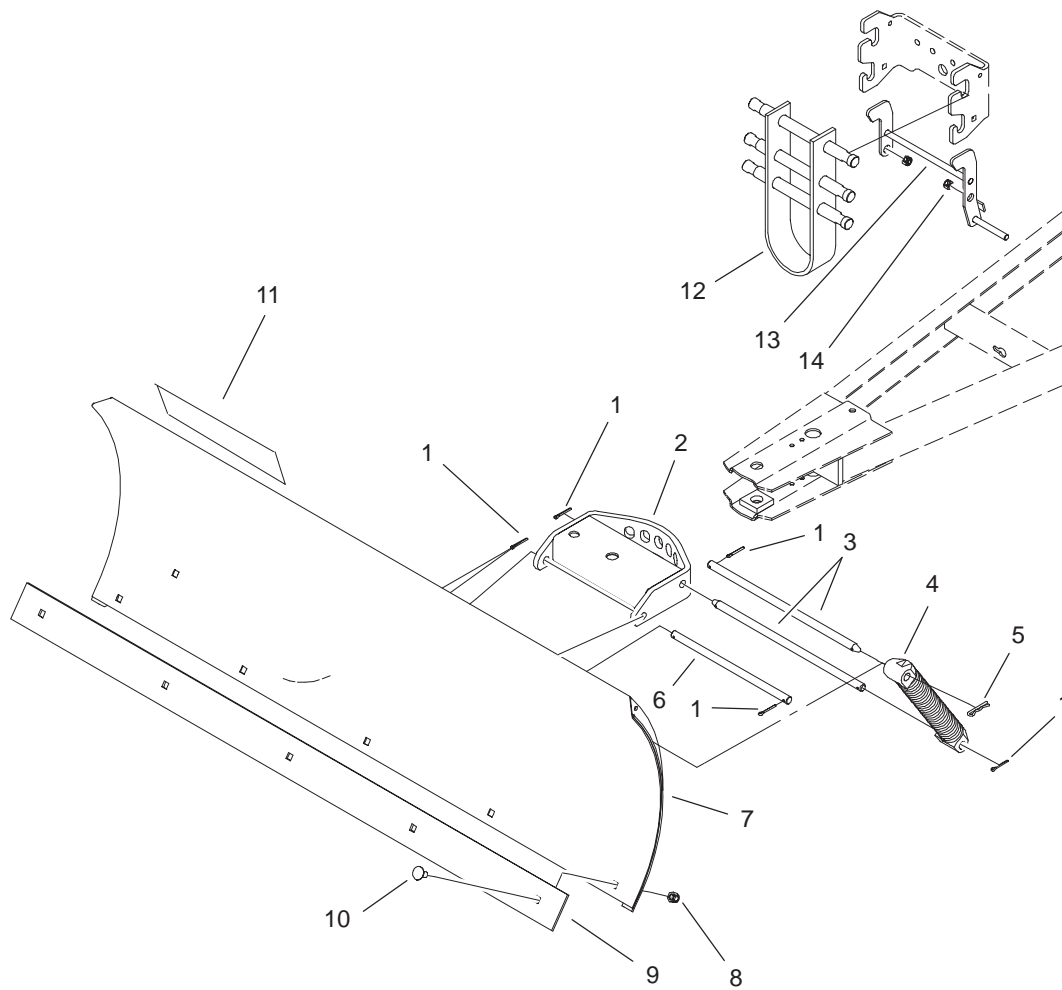


Sheet No.:2

Frame Assembly

Ref. No.	Part No.	Qty.	Description
1	5359	1	Grip
2	104-5073-01	1	Lever-Blade
3	32146-17	4	Nut-Lock
4	2412-32	3	R-Clamp-Throttle/ Choke
5	325-4	1	Screw-HH
6	3218-18	1	Nut-Jam
7	323-6	1	Screw-HH
8	283-2	2	Pin-Clevis
9	105052	1	Link-Lift
10	9335054	2	Pin-Hair
11	119790-01	1	Lift ASM
12	106-9893-01	1	Dozer Ext. ASM
13	104-5039-01	1	Frame
13:1:5	88-6520	1	Pin-Index
13:1:10	2354	1	Spring-Compression
13:1:11	3272-11	1	Pin-Cotter
14	9335074	2	Pin-Hair
15	114595	1	Shaft
16	3296-39	1	Nut-Lock, NI
17	104-1289	1	Cable-Tension
18	3272-12	1	Pin-Cotter
19	94-7782	1	Bracket - Cable End
21	9156404	1	Nut-Lock
22	79-4790	1	Rod
23	3216-7	1	Screw-HH

Ref. No.	Part No.	Qty.	Description
24	4944	2	Plug
25	9335124	1	Pin-Hair
26	321-6	4	Screw-HH
27	92-7036	1	Lever-Index
28	3272-11	1	Pin-Cotter



Sheet No.:3

Blade Assembly

Ref. No.	Part No.	Qty.	Description
1	3272-11	5	Pin-Cotter
2	78-8760-01	1	Quadrant
3	5120	2	Rod-Blade Pivot
4	105-1386-03	2	Lug/Spring ASM
5	9335124	1	Pin-Hair
6	4564	1	Rod-Lower Plated
7	78-1330-01	1	Blade ASM
8	3296-39	5	Nut-Lock, NI
9	93-1612-01	1	Plate - Blade Edge
10	3231-1	5	Screw-CARR
11	106-5838	1	Decal-Workhorse
12	106-9907-03	1	Anti Sway ASM
13	106-9905-03	1	Latch ASM
14	3296-29	2	Nut-Lock, NI

Ref. No.	Part No.	Qty.	Description

