



Front Axle Shaft Replacement Kit for Reelmaster[®] 5000 Series Traction Units

Part No. 106–7099

Parts Catalog

Ordering Replacement Parts

To order replacement parts, please supply: the part number, the quantity, and the description of each part desired.

Understanding Reference Numbers

Each identified part in an illustration has a reference number. The reference number for a part also appears in the parts list, along with other information about the part.

This catalog uses two special reference number formats, one to indicate parts in a service assembly and another to indicate the quantity of a given part in an illustration.

Service Assembly Reference Numbers

Parts in service assemblies have reference numbers in the form **a:b**. The **a** represents the reference number of the entire service assembly and the **b** represents a sequential number unique to each part within the service assembly.

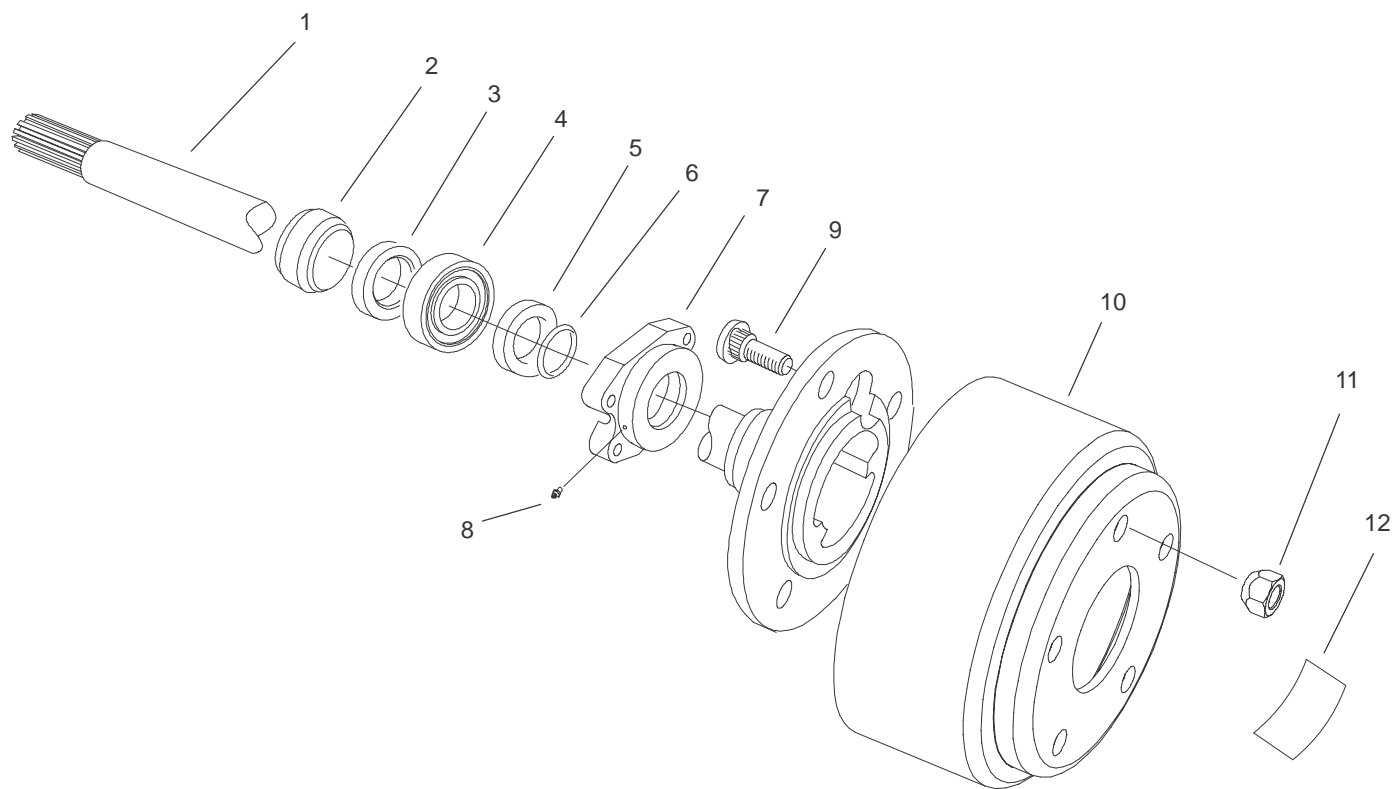
For example, a wheel assembly might be identified by reference number **6**, the tire by **6:1**, the valve by **6:2**, and the wheel by **6:3**. When you order the assembly identified by reference number **6**, you receive all parts identified by reference numbers **6:1**, **6:2**, and **6:3**. However, you may also order any part individually.

Reference numbers of this type appear in illustrations and in part lists.

Reference Numbers Indicating Quantity

In an illustration, if a reference number indicates more than one part, the reference number has the form **nX y**. The **n** represents the quantity of the part, the **X** is the multiplication symbol, and the **y** represents the reference number.

For example, in an illustration, the reference number **2X 37** means that two of the parts identified by reference number **37** are indicated.



Sheet No.:0

Front Axle Replacement Kit Assembly

Ref. No.	Part No.	Qty.	Description
1	100-3840	1	Shaft-Axle, LH
1	100-3841	1	Shaft-Axle, RH
2	100-3847	2	Retainer-Bearing
3	100-3842	2	Seal-Oil
4	21-8180	2	Bearing ASM
5	100-3845	2	Seal-Grease
6	100-3848	2	O-Ring
7	100-3849	2	Cap-Bearing
8	100-3850	2	Zerk-Special
9	106-9205	10	Stud-Wheel
10	106-9209-03	2	Drum-Brake
11	242-50	10	Nut-Lug
12	106-9206	2	Decal-Torque, Wheel

Ref. No.	Part No.	Qty.	Description