



<h2 style="margin: 0;">Remote Air Cleaner Kit</h2> <p style="margin: 0;">Groundsmaster/Proline 117,118,120</p>	
<p>Part No. 55-8460</p>	<p>INSTALLATION INSTRUCTIONS</p>

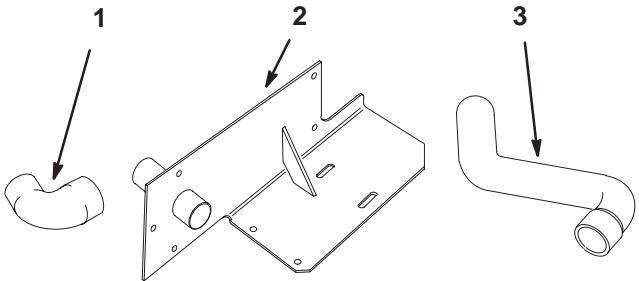
Loose Parts

Note: Use the chart below to identify parts for assembly.

DESCRIPTION	QTY.	USE
Air Hose	1	Select air hose and mounting bracket
Air Hose	1	
Mounting Bracket	1	
Air Cleaner Assembly	1	Install air cleaner for Groundsmaster 117 and 118 or 120
Hose Clamp	2	
Cap Screw	4	
Nut	1	

Selecting Air Hose and Mounting Bracket

1. Select the proper air hose for your model of Groundsmaster. Mounting bracket is used only on Groundsmaster models 117 and 118 (Fig.1).



m-4107

Figure 1

1. Air Hose for Groundsmaster models 117 and 118 only.
2. Mounting Bracket for Groundsmaster models 117 and 118 only.
3. Air Hose for Groundsmaster model 120 only.

Installing Air Cleaner for Groundsmaster 117 and 118

1. Loosen hose clamp securing air cleaner hose to air chamber. Slide hose off air chamber (Fig. 2).
2. Remove (5) cap screws and locknuts securing air chamber, wire harness R-clamp, and air chamber cover to left seat support. Remove air chamber and air chamber cover (Fig. 2).
3. Remove (2) capscrews and locknuts securing left side of hood support to seat support (Fig. 2).

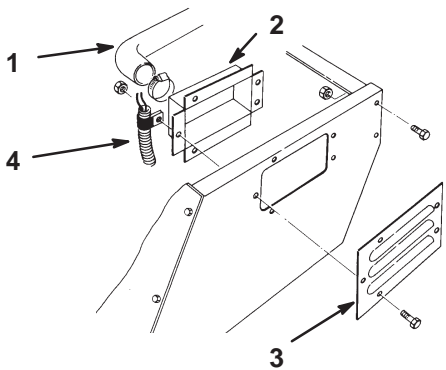


Figure 2

- | | |
|----------------|-------------------------|
| 1. Hose | 3. Air Chamber Cover |
| 2. Air Chamber | 4. Wire Harness R-Clamp |

4. Align mounting holes in air cleaner mounting bracket with holes in seat support, and secure with capscrews and locknuts previously removed (Fig. 3).

Note: Make sure wire harness clamp and hood support are reinstalled when securing mounting bracket to seat support. Make sure wires are routed away from moving parts.

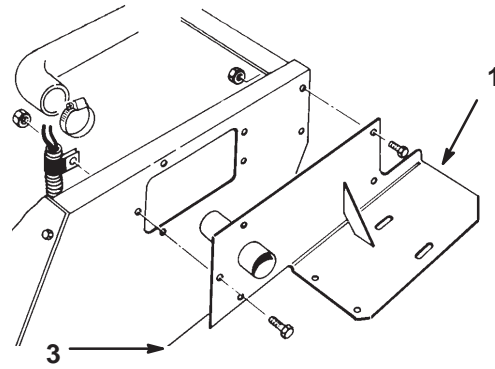


Figure 3

1. Air Cleaner Mounting Bracket

5. Remove machine screws and square nuts securing air cleaner mounting bands to air cleaner body. Remove mounting bands (Fig. 4).
6. Secure mounting bands to mounting bracket with capscrews and locknuts (Fig. 4).
7. Slide air cleaner body between mounting bands and secure with machine screws and square nuts previously removed (Fig. 4).

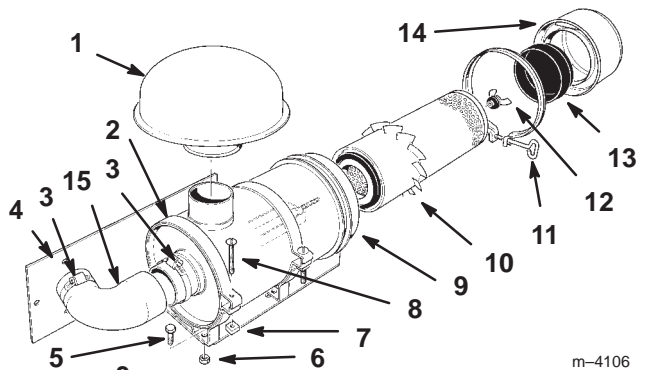


Figure 4

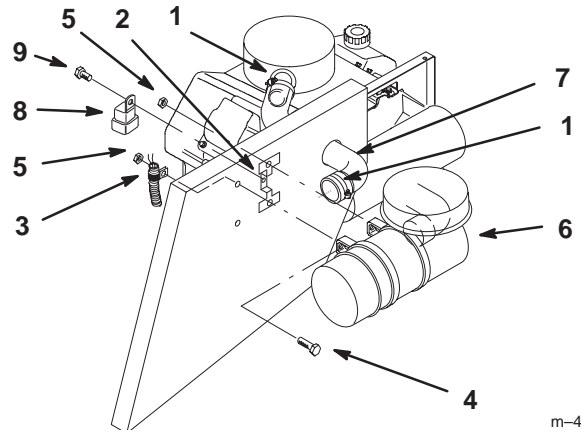
- | | |
|---------------------------------|---------------------|
| 1. Air Inlet Hood | 8. Machining Screw |
| 2. Mounting Band | 9. Air Cleaner Body |
| 3. Hose Clamps | 10. Filter Element |
| 4. Air Cleaner Mounting Bracket | 11. Clamp |
| 5. Capscrew | 12. Nut |
| 6. Locknut | 13. Baffle |
| 7. Square Nut | 14. Dust Cap |
| | 15. Hose |

8. Slide hose clamps onto air cleaner hose. Push ends of hose onto air cleaner and mounting bracket opening. Large end of hose fits air cleaner outlet.
9. Position and tighten hose clamps so a good seal is formed between inside of hose and mounting surface.
10. Install air cleaner inlet hood.

Installing Air Cleaner for Groundsmaster 120

1. Disengage the power take off (PTO), set the parking brake, and turn the ignition key to "OFF" to stop the engine. Remove the key.
2. Tilt seat forward and pull up hood.
3. Remove screw and electrical relay attached to electrical bracket (Fig. 5).
4. Remove two (2) cap screws and nuts holding electrical bracket (Fig. 5).
5. Remove cap screw holding R-clamp and electrical wire for seat (Fig. 5).
6. Install capscrews through air cleaner assembly and reinstall R-clamp and electrical bracket. Tighten capscrews to secure air filter (Fig. 5).
7. Reinstall screw and electrical relay (Fig. 5).

8. Place hose through hole in side panel (Fig. 5).
9. Place hose clamps onto hose for Groundsmaster 120 (Fig. 5).
10. Install hose onto the air cleaner and air intake on top of motor. (Fig. 5).
11. Tighten hose clamps on the ends of the air hose (Fig. 5).



m-4108

Figure 5

- | | |
|-----------------------|---------------------|
| 1. Clamp | 6. Air Cleaner |
| 2. Electrical Bracket | 7. Air Hose |
| 3. R-Clamp | 8. Electrical Relay |
| 4. Capscrew | 9. Screw |
| 5. Nut | |

Servicing Air Cleaner

General Air Cleaner Maintenance

To prevent possible severe engine damage and ensure maximum engine service life, periodically inspect the air cleaner and hose assembly.

1. Assure hose between air cleaner and carburetor is clamped securely in place. Replace the hose if it is cracked or punctured.
2. Check air cleaner body for dents and other damage which could possibly cause an air leak. Replace a damaged air cleaner body.
3. Insure dust cup is sealing around bottom of air cleaner body.
4. Mounting screws and nuts holding air cleaner in place must be tight.
5. Inlet cap must be free of obstructions.

Service Dust Cup and Baffle

Inspect the dust cup and rubber baffle once a week or every 50 hours operation; however, daily or more frequent inspection is required when operating conditions are extremely dusty and dirty. Never allow dust to build up closer than 1 inch (25 mm) from the slot in top of dust cup.

Note: If conditions are extremely dusty and dirty, begin by checking dust cup and baffle after each day's operation to establish approximately how long an interval passes before dust cup should be emptied. Base further maintenance requirements on this figure. These conditions may be particularly prevalent if the rear discharge cutting unit is attached.

1. Disengage the power take off (PTO), set the parking brake, and turn the ignition key to "OFF" to stop the engine. Remove the key.
2. Loosen thumb screw until dust cup and baffle can be removed. Separate dust cup and baffle (Fig. 4).
3. Dump dirt out of the dust cup. After cleaning cup and baffle, reinstall both parts with TOP of dust cup up (Fig. 4).

Servicing Air Cleaner Filter

Service the air cleaner filter every 200 hours or more frequently in extreme dusty or dirty conditions by washing or using compressed air. Replace the element after every six cleanings (1500 hours) or annually, whichever comes first.

Note: If conditions are extremely dusty and dirty, begin by checking dust cup and baffle after each day's operation to establish approximately how long an interval passes before dust cup should be emptied.

1. Disengage the power take off (PTO), set the parking brake, and turn the ignition key to "OFF" to stop the engine. Remove the key.
2. Clean around the air cleaner to prevent dirt from getting into the engine and causing damage.
3. Remove and service dust cup; refer to Service Dust Cup and Baffle.
4. Remove wing nut w/gasket and slide filter element out of air cleaner body (Fig. 4).

Inspecting Filter Element

1. Place bright light inside filter element.
2. Rotate filter slowly while checking for cleanliness, ruptures, holes, and tears. Replace defective filter element.
3. Check fin assembly, gasket, and screen for damage.

Cleaning the Filter Element – Washing Method 1

IMPORTANT: Replace filter if damage is evident.

1. Clean filter element by washing in a solution of filter cleaner (Toro Part No. 27-7220, available from Toro) and water.

IMPORTANT: Do not remove plastic fin assembly because washing removes dust from beneath fins.

2. Prepare a solution of filter cleaner and water and soak filter element about 15 minutes. Refer to directions on filter cleaner carton for complete information.
3. After soaking filter for 15 minutes, rinse with clear water. Maximum water pressure must not exceed 40 psi (276 kPa) to prevent damage to the filter element.
4. Dry filter element using warm, flowing air (160°F (71°C) max), or allow element to air-dry. Do not use compressed air or a light bulb to dry the filter element because damage could result.

Cleaning the Filter Element – Compressed Air Method

IMPORTANT: Replace filter if damage is evident.

Note: Compressed air is recommended when element must be used immediately after servicing because a washed element must be dried before it is used. By comparison, washing the element cleans better than blowing dirt out with compressed air.

IMPORTANT: Do not remove plastic fin assembly because back-blowing with compressed air removes dust from beneath fins.

1. Blow compressed air from inside to the outside of dry filter element. Do not exceed 100 psi (689 kPa) to prevent damage to the element.
2. Keep air hose nozzle at least 1 inch (25 mm) from pleated paper, and move nozzle up and down while rotating the filter element. Inspect element when dust and dirt are removed; refer to Inspecting Filter Element.
3. Wipe inside of air cleaner body with a damp cloth to remove excess dust. Slide filter into air cleaner body and secure in place with wing nut and gasket.
4. Install dust cup and baffle. Move thumb screw behind air cleaner body and tighten it securely.

