



Groundsmaster[®] 225

Traction Unit

Model No. 30230—230000001 and Up

Parts Catalog

Ordering Replacement Parts

To order replacement parts, please supply: the part number, the quantity, and the description of each part desired.

Understanding Reference Numbers

Each identified part in an illustration has a reference number. The reference number for a part also appears in the parts list, along with other information about the part.

This catalog uses two special reference number formats, one to indicate parts in a service assembly and another to indicate the quantity of a given part in an illustration.

Service Assembly Reference Numbers

Parts in service assemblies have reference numbers in the form **a:b**. The **a** represents the reference number of the entire service assembly and the **b** represents a sequential number unique to each part within the service assembly.

For example, a wheel assembly might be identified by reference number **6**, the tire by **6:1**, the valve by **6:2**, and the wheel by **6:3**. When you order the assembly identified by reference number **6**, you receive all parts identified by reference numbers **6:1**, **6:2**, and **6:3**. However, you may also order any part individually.

Reference numbers of this type appear in illustrations and in part lists.

Reference Numbers Indicating Quantity

In an illustration, if a reference number indicates more than one part, the reference number has the form **nX y**. The **n** represents the quantity of the part, the **X** is the multiplication symbol, and the **y** represents the reference number.

For example, in an illustration, the reference number **2X 37** means that two of the parts identified by reference number **37** are indicated.

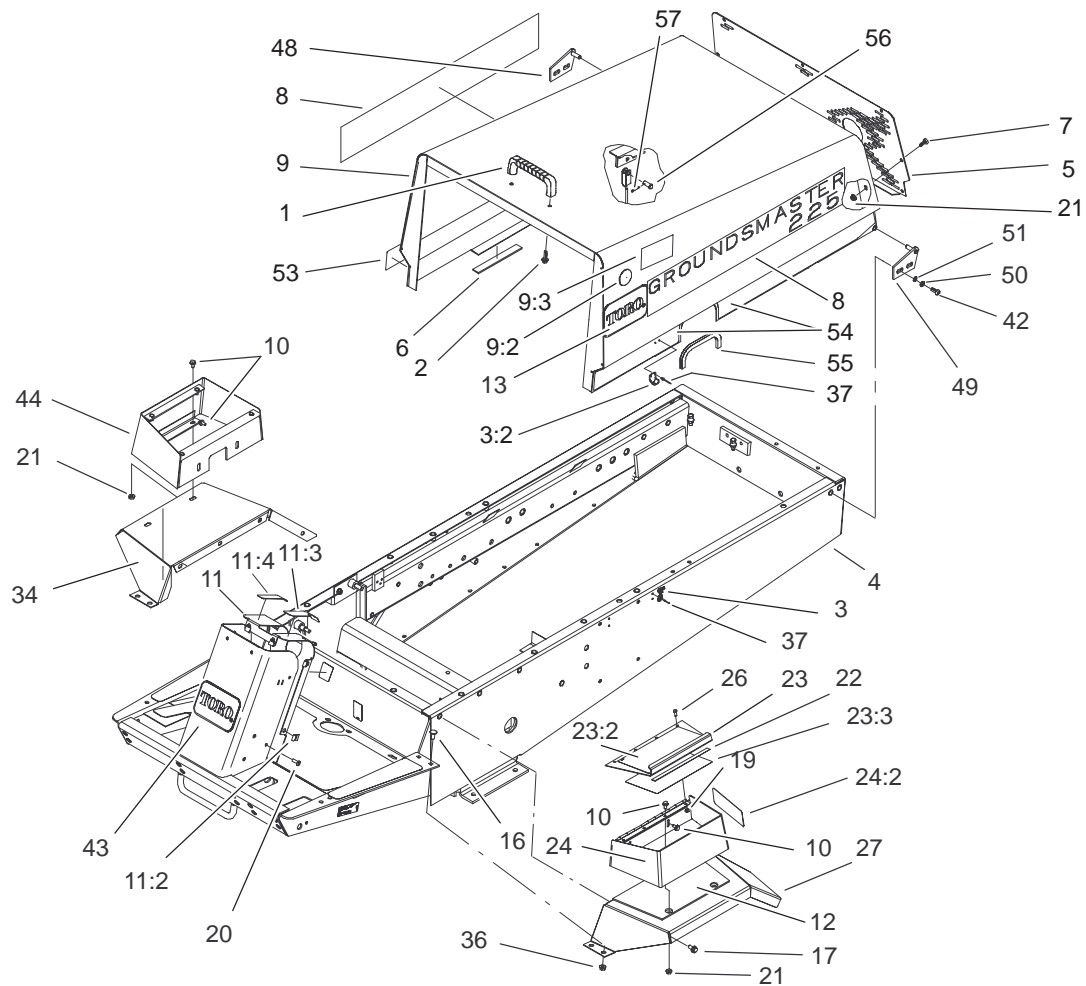
Contents

Description	Page	Description	Page
Frame and Cover Assembly	3	Axle Assembly	27
Frame Assembly No. 95–6280	4	Steering Cylinder Assembly No. 76–2070	28
Control Panel Assembly	5	Engine Installation Assembly	29
Power Steering and Brake Pedal Assembly ...	6	Electric Clutch/Brake Assembly No. 100–6565	30
Power Steering Valve Assembly No. 92–7308 .	8	Electrical Schematic	31
Traction Pedal Assembly	9	Electrical Schematic(Continued)	32
Battery and Engine Mount Assembly	10	Differential Assembly	33
PTO and Shaft Assembly	11	Differential Carrier Assembly No. 92–4909	34
Hydraulic Lift and Throttle Assembly	12	Brake Assembly	36
Hydraulic Lift and Throttle Assembly (Continued)	13	Hydraulic Schematic	37
Lift Valve Assembly No. 63–7960	14	Cylinder Assembly	38
Connector Fitting Assembly No. 63–6760	15	Crankshaft Assembly	39
Radiator Assembly	16	Cylinder Head Assembly	40
Fuel Tank and Axle Assembly	17	Intake and Exhaust Assembly	41
Fuel Tank and Axle Assembly(Continued)	18	Carburetor Assembly	42
Transmission and Drive Coupling Assembly ...	19	Rocker Arm Assembly	43
Transmission and Drive Coupling Assembly(Continued)	20	Oil Pan and Dipstick Assembly	44
Transmission Assembly No. 92–5513	21	Cover Assembly	45
Transmission Interlock Assembly	22	Gears and Housing Assembly	46
Seat Frame Assembly	23	Water Pump and Fan Assembly	47
Air Cleaner Components Assembly	24	Governor Assembly	48
Air Cleaner Assembly No. 27–7100	25	Alternator and Starter Assembly	49
Rear Axle Assembly	26	Gasket Set and Valve Overhaul Kit	50
		Carburetor Kit	51

Part Description Abbreviations

Part descriptions in this catalog may include the following abbreviations.

Abbreviation	Meaning	Abbreviation	Meaning
AR	as required	HYD	hydraulic
ASM	assembly	INC	incorporated
CARR	carriage	LH	left hand
DEG	degrees	NI	nylon insert
FH	flat head	PPH	Phillips pan head
GA	gauge	PTH	Phillips truss head
HF	hex flange	PTO	power take off
HH	hex head	RH	right hand
HHF	hex head flange	SFH	slotted fillister head
HLH	hex lag head	SHH	slotted hex head
HJ	hex jam	SQH	square head
HOC	height-of-cut	SHWH	slotted hex washer head
HS	hex socket	SPH	slotted pan head
HSBH	hex socket button head	SRH	slotted round head
HSFH	hex socket flat head	STD	standard
HSH	hex socket head	TAP	self tapping
HWH	hex washer head	TTH	Torx truss head
HWHTF	hex washer head thread forming	WH	wing head

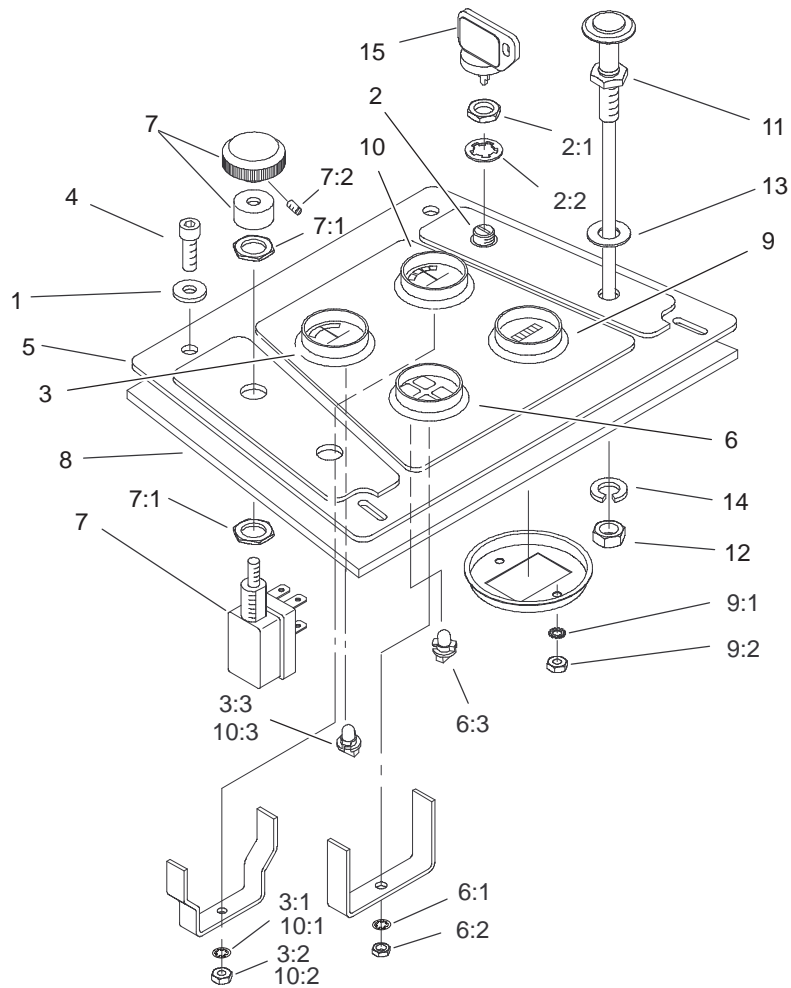


Sheet No.:2

Frame and Cover Assembly

Ref. No.	Part No.	Qty.	Description
1	65-5100	1	Handle-Door
2	46-8091	2	Screw-HWH
3	59-9740	1	Flex Draw Latch ASM
3:2	249-40	1	Keeper
4	105-7165	1	Frame ASM
5	63-7030-03	1	Screen-Hood Rear
6	82-8950	2	Foam
7	321-3	7	Screw-HH
8	106-4398	2	Decal
9	100-6571	1	Hood ASM
9:2	98-9314	1	Grommet
9:3	100-6574	1	Decal-Warning
10	3234-13	8	Screw-HHF
11	105-7180	1	Tower Panel ASM
11:2	105-7170	6	Nut-Retainer
11:3	105-7179	1	Decal-Brake, Parking
11:4	82-8940	1	Decal-Steering, Tilt
12	76-4790	1	Pad-Rubber
13	62-7400	2	Decal-Logo, Toro
16	3230-23	4	Screw-CARR
17	3234-14	8	Screw-HHF
19	3296-12	4	Nut-Lock
20	3250-32	6	Screw-PPH
21	32128-33	11	Nut-HF
22	66-3050	1	Latch-Box, Tool
23	106-8066	1	Tool Box Cover ASM

Ref. No.	Part No.	Qty.	Description
23:2	92-5774	1	Decal-Danger
23:3	106-8065	1	Decal-Service
24	92-6501	1	Tool Box ASM
24:2	93-7822	1	Decal-Refueling
26	3290-359	4	Screw-HWH
27	63-7310-01	1	Fender-LH
34	63-7300-01	1	Fender-RH
36	32128-20	4	Nut-HF
37	3290-271	4	Rivet-Pop
42	322-5	4	Screw-HH
43	62-5550	1	Decal-Toro
44	63-8050	1	Box-Control
48	63-6890-01	1	Plate ASM-Hood Hinge, RH
49	63-6900-01	1	Plate ASM-Hood Hinge, LH
50	3253-4	4	Washer-Lock
51	3256-23	4	Washer-Flat
53	93-3192	1	Decal-Hood, RH
54	93-3193	1	Decal-Hood, LH
55	66-8110	1	Trim-Hood
56	283-58	1	Pin-Clevis
57	3272-10	1	Pin-Cotter



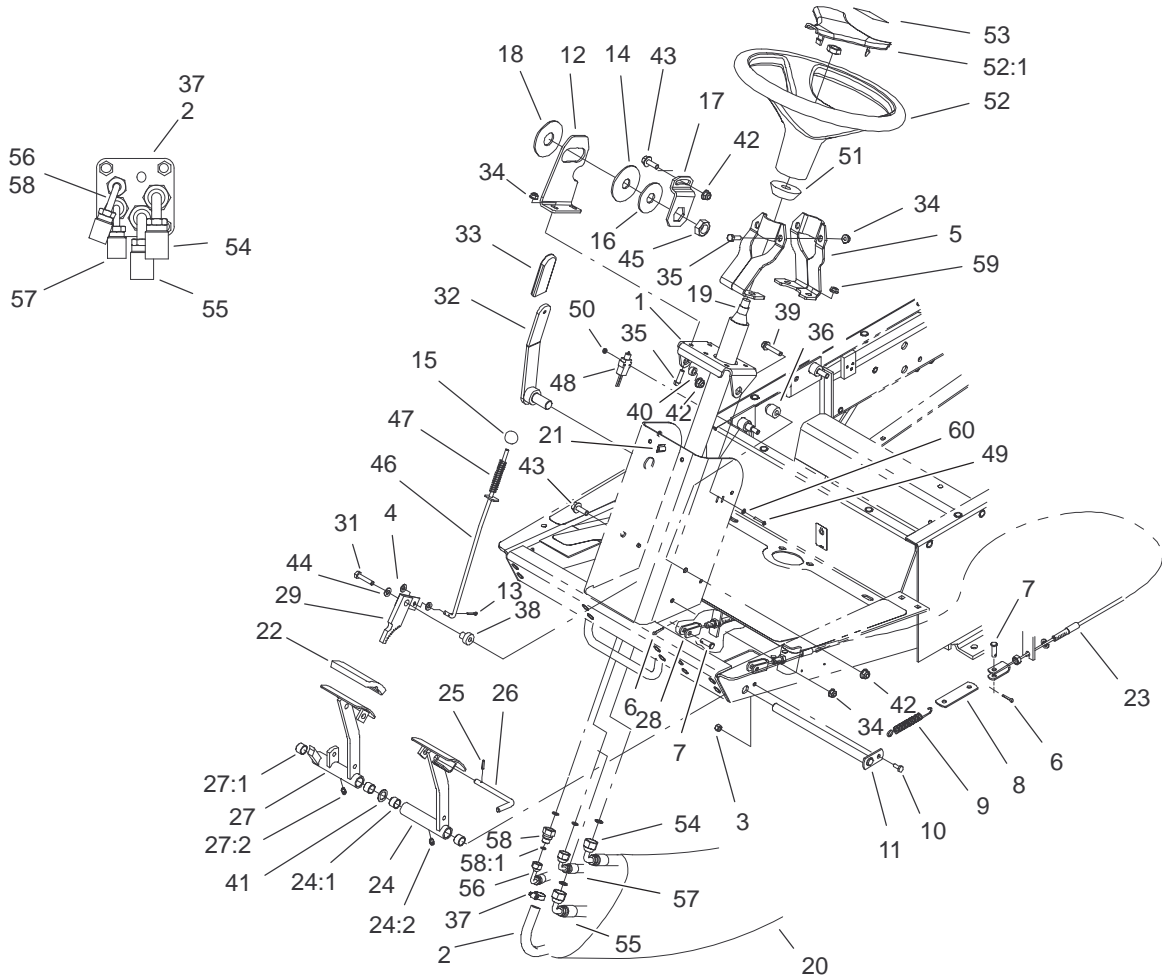
Sheet No.:3

Control Panel Assembly

Ref. No.	Part No.	Qty.	Description
1	3256-1	4	Washer-Flat
2	104-2541	1	Switch-Key
2:1	218-461	1	Nut-HH
2:2	3254-5	1	Washer-Lock, Internal
3	105-2540	1	Gauge-Temp, Gas
3:1	3254-1	3	Washer-Lock, Internal
3:2	3217-27	3	Nut-Hex
3:3	105-9265	1	Bulb And Lamp ASM
4	3274-65	4	Screw-HSBH
5	95-3009	1	Panel-Control
6	98-9306	1	Light-Warning
6:1	3254-1	1	Washer-Lock, Internal
6:2	3217-27	1	Nut-Hex
6:3	105-9264	4	Bulb And Lamp ASM
7	95-6309	1	Switch-PTO
7:1	3218-19	2	Nut-HJ
7:2	3298-8	1	Screw-Set
8	105-4279-03	1	Panel-Control
9	66-2950	1	Gauge-Hourmeter
9:1	3255-20	2	Washer-Lock
9:2	3217-25	2	Nut-Hex
10	98-9339	1	Gauge-Fuel
10:1	3254-1	3	Washer-Lock, Internal
10:2	3217-27	3	Nut-Hex
*10:3	105-9265	1	Bulb And Lamp ASM
11	94-9425	1	Choke Control ASM

Ref. No.	Part No.	Qty.	Description
12	3220-3	1	Nut-Jam
13	3256-24	1	Washer-Flat
14	3253-21	1	Washer-Lock
15	63-8360	1	Key-Ignition

* Not illustrated

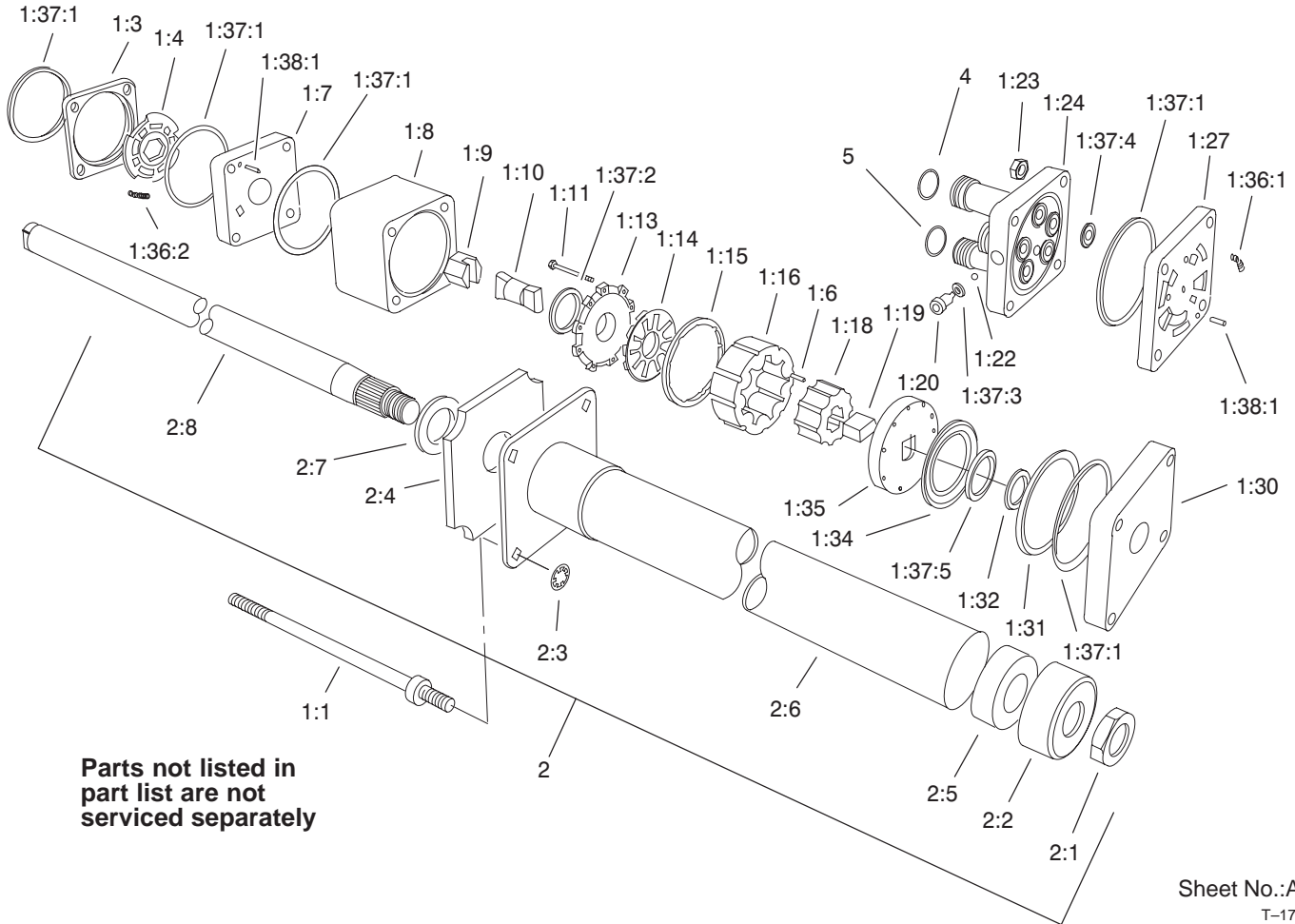


Sheet No.:4

Power Steering and Brake Pedal Assembly

Ref. No.	Part No.	Qty.	Description
1	105-7155-03	1	Bracket-Pivot
2	66-8140	1	Hose-Hydraulic
3	3296-42	1	Nut-Lock, NI
4	3256-22	2	Washer-Flat
5	105-7191-03	2	Support-Column
6	3272-10	4	Pin-Cotter
7	283-58	4	Pin-Clevis
8	63-6750	2	Link-Cable, Brake
9	3-7243	2	Spring-Extension
10	321-3	1	Screw-HH
11	63-6210-03	1	Pin-Brake
12	105-7181-03	1	Plate-Pivot
13	3272-5	2	Pin-Cotter
14	82-9010	1	Disc-Friction
15	233-17	1	Knob
16	80-2930	1	Washer-Flat
17	80-2880	1	Bracket-Tilt
18	31-0390	1	Disc-Friction
19	92-7308	1	Power Steering Unit ASM
20	44-8530	1	Protector-Sleeve
21	105-7188	2	Clamp-Adhesive Backed
22	93-8742	2	Footpad-Brake
23	63-7731	1	Cable-Brake
24	63-6180	1	Pedal-Brake, LH

Ref. No.	Part No.	Qty.	Description
24:1	256-42	2	Bushing
24:2	302-5	1	Fitting-Grease
25	32121-50	1	Pin-Spring
26	63-7880	1	Pin-Latch, Brake
27	63-6190	1	Pedal-Brake, RH
27:1	256-42	2	Bushing
27:2	302-5	1	Fitting-Grease
28	63-7730	1	Cable-Brake
29	63-7900-03	1	Rack ASM
31	322-7	1	Screw-HH
32	93-1353-03	1	Lever-Steering, Tilt
33	21-1880	1	Grip-Handle
34	104-8300	5	Nut-Flange, NI
35	322-5	4	Screw-HH
36	105-7166	1	Spacer
37	2412-36	1	Clamp-Hose
38	105-7156	1	Spacer
39	3234-18	1	Screw-HHF
40	80-2960	1	Spacer-Tower
41	3256-69	2	Washer-Flat
42	104-8301	3	Nut-Flange, NI
43	3234-42	2	Screw-HHF
44	3256-23	1	Washer-Flat
45	3218-7	1	Nut-Jam
46	105-7168	1	Rod ASM



Parts not listed in part list are not serviced separately

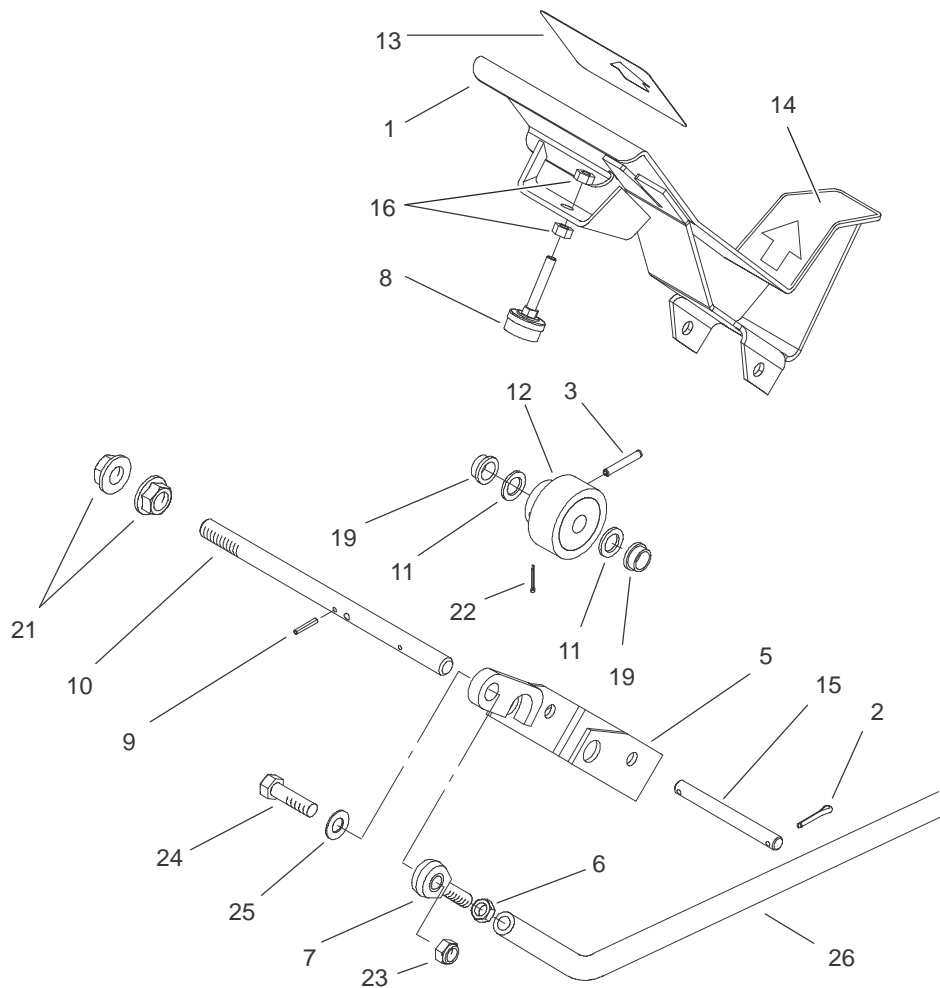
Sheet No.:A2
T-1760

Power Steering Valve Assembly No. 92-7308

Ref. No.	Part No.	Qty.	Description
☆1		1	Power Steering Unit
1:1	92-7310	4	Bolt-Special
☆1:3		1	Ring-Valve
☆1:4		1	Plate-Valve
☆1:6		9	Pin-Alignment
☆1:7		1	Manifold-Isolation
☆1:8		1	Ring-Metering
☆1:9		1	Hex Drive ASM
☆1:10		1	Link-Drive
☆1:11		11	Screw-HSH
☆1:13		1	Cover-Commutator
☆1:14		1	Commutator
☆1:15		1	Ring-Commutator
☆1:16		1	Stator
☆1:18		1	Rotor
☆1:19		1	Spacer-Link, Drive
☆1:20		1	Plug
☆1:22		1	Ball
☆1:23		4	Nut-Hex
☆1:24		1	Cover-Port
☆1:27		1	Manifold-Port
☆1:30		1	Plate-Cover, Upper
☆1:31		1	Spacer-Bearing, Thrust
☆1:32		1	Spacer-Seal
☆1:34		1	Bearing-Thrust

Ref. No.	Part No.	Qty.	Description
☆1:35		1	Plate-Drive
*1:36	66-9970	1	Spring Kit
☆1:36:1		3	Spring
☆1:36:2		3	Spring
*1:37	66-9980	1	Seal Kit
☆1:37:1		5	Ring-Seal
☆1:37:2		1	Seal-Commutator
☆1:37:3		1	O-Ring
☆1:37:4		5	O-Ring
☆1:37:5		1	Seal-Face
*1:38	66-9990	1	Needle Roller Kit
☆1:38:1		9	Pin-Alignment
2	92-7314	1	Column ASM
2:1	3220-6	1	Nut-Jam
2:2	92-7315	1	Seal-Upper
2:3	92-7316	4	Nut-Push On
2:4	92-7317	1	Seal-Foam, Upper Cover
2:5	66-9780	1	Bushing
☆2:6		1	Cover-Upper
☆2:7		1	Washer-Retaining
☆2:8		1	Shaft-Input
4	237-30	2	O-Ring
5	237-22	2	O-Ring

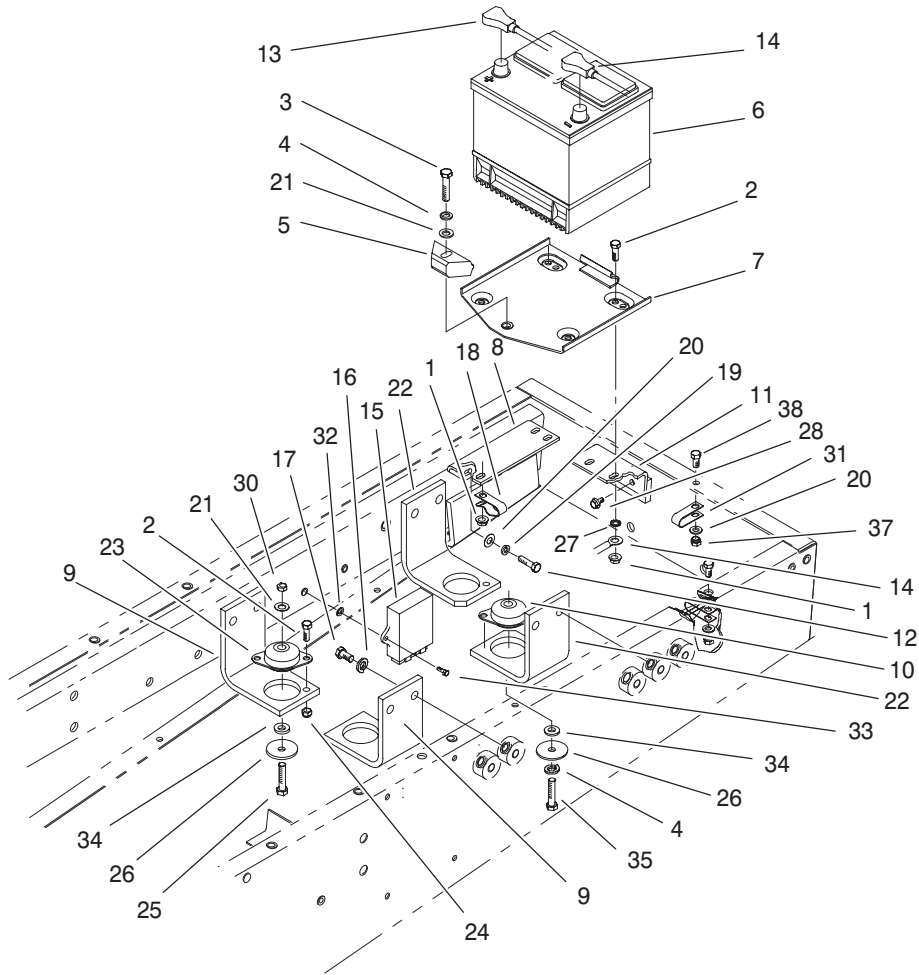
☆ Not serviced separately
* Not illustrated



Sheet No.:5

Traction Pedal Assembly

Ref. No.	Part No.	Qty.	Description	Ref. No.	Part No.	Qty.	Description
1	105-7150-03	1	Pedal ASM				
2	3272-10	2	Pin-Cotter				
3	32121-6	1	Pin-Roll				
5	92-8854-03	1	Bracket-Pivot				
6	3220-3	1	Nut-Jam				
7	2411-36	1	Bearing-End, Rod				
8	32141-36	1	Screw-Adjustment, Level				
9	32121-50	1	Pin-Spring				
10	92-5534	1	Shaft-Pedal, Traction				
11	5-7570	2	Washer-Flat				
12	28-5220	1	Friction Wheel ASM				
13	94-3307	1	Pad-Pedal, Traction				
14	94-3308	1	Pad-Pedal, Traction				
15	92-5537	1	Pin-Pedal, Traction				
16	3217-6	2	Nut-Hex				
19	256-156	2	Bushing-Flange				
21	32128-56	2	Nut-HF				
22	3272-6	1	Pin-Cotter				
23	3296-39	1	Nut-Lock, NI				
24	323-29	1	Screw-HH				
25	3256-24	1	Washer-Flat				
26	63-6410-03	1	Tube-Pump, Control				

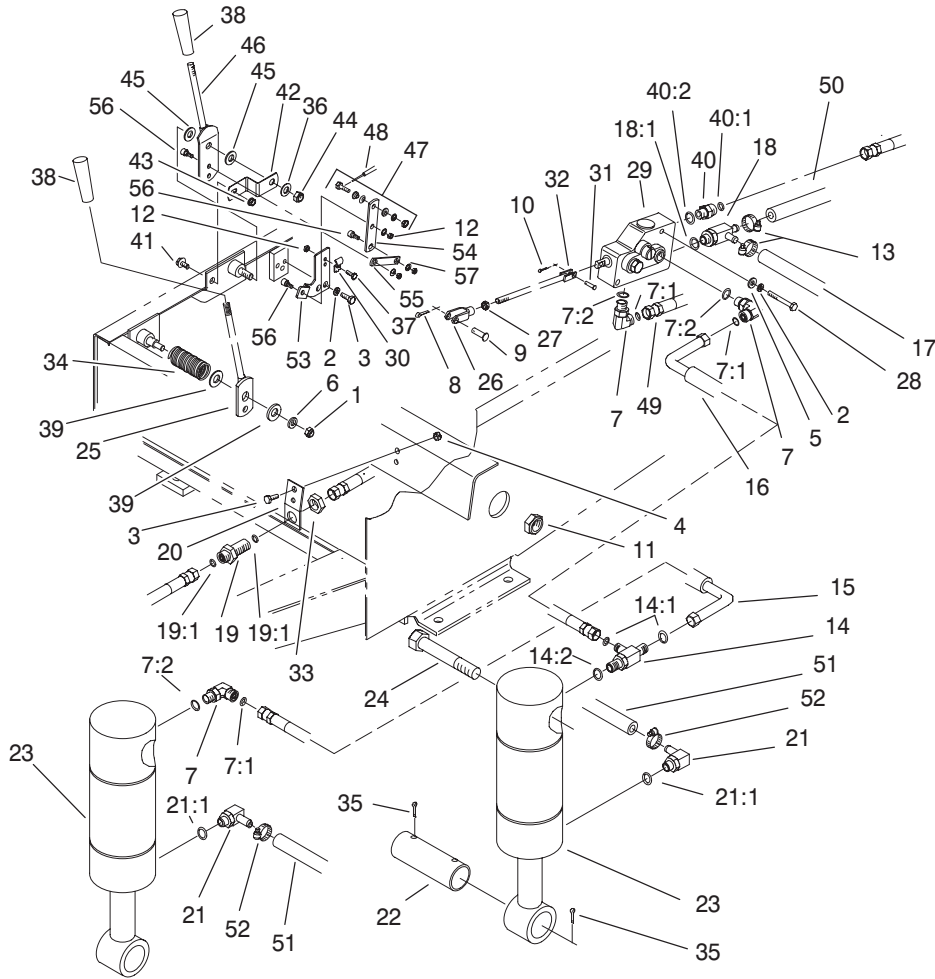


Sheet No.:6

Battery and Engine Mount Assembly

Ref. No.	Part No.	Qty.	Description
1	32128-20	3	Nut-HF
2	322-5	11	Screw-HH
3	323-9	1	Screw-HH
4	3253-21	2	Washer-Lock
5	66-2490	1	Retainer-Battery
6	66-2750	1	Battery
7	94-7343	1	Battery Base ASM
8	95-1592-03	1	Bracket-Base, Battery
9	95-6270-03	2	Bracket-Mount, Engine
10	63-7141	1	Mount-Shock, Engine
11	95-1599-03	1	Bracket-Base, Battery
12	322-6	2	Screw-HH
13	105-1223	1	Cable-Positive
14	63-7340	1	Cable-Battery, Negative
15	99-9262	1	Module-Ignition
16	3253-7	8	Washer-Lock
17	3213-2	8	Screw-HH
18	92-5753	1	Clamp-Hose
19	3253-4	2	Washer-Lock
20	3256-23	4	Washer-Flat
21	3256-24	4	Washer-Flat
22	95-6272-03	2	Bracket-Engine Mount
23	63-7140	3	Mount-Shock, Engine
24	3296-29	8	Nut-Lock, NI

Ref. No.	Part No.	Qty.	Description
25	323-11	3	Screw-HH
26	63-7400	4	Washer-Rebound
27	3255-8	1	Washer-Lock
28	3234-30	2	Screw-HHF
30	3296-39	3	Nut-Lock, NI
31	98-3883	2	Clamp-Wire
32	3256-22	2	Washer-Flat
33	3274-8	2	Screw-HSH
34	80-7730	4	Spacer
35	323-10	1	Screw-HH
37	33024-00	2	Nut-Lock
38	3274-96	2	Screw

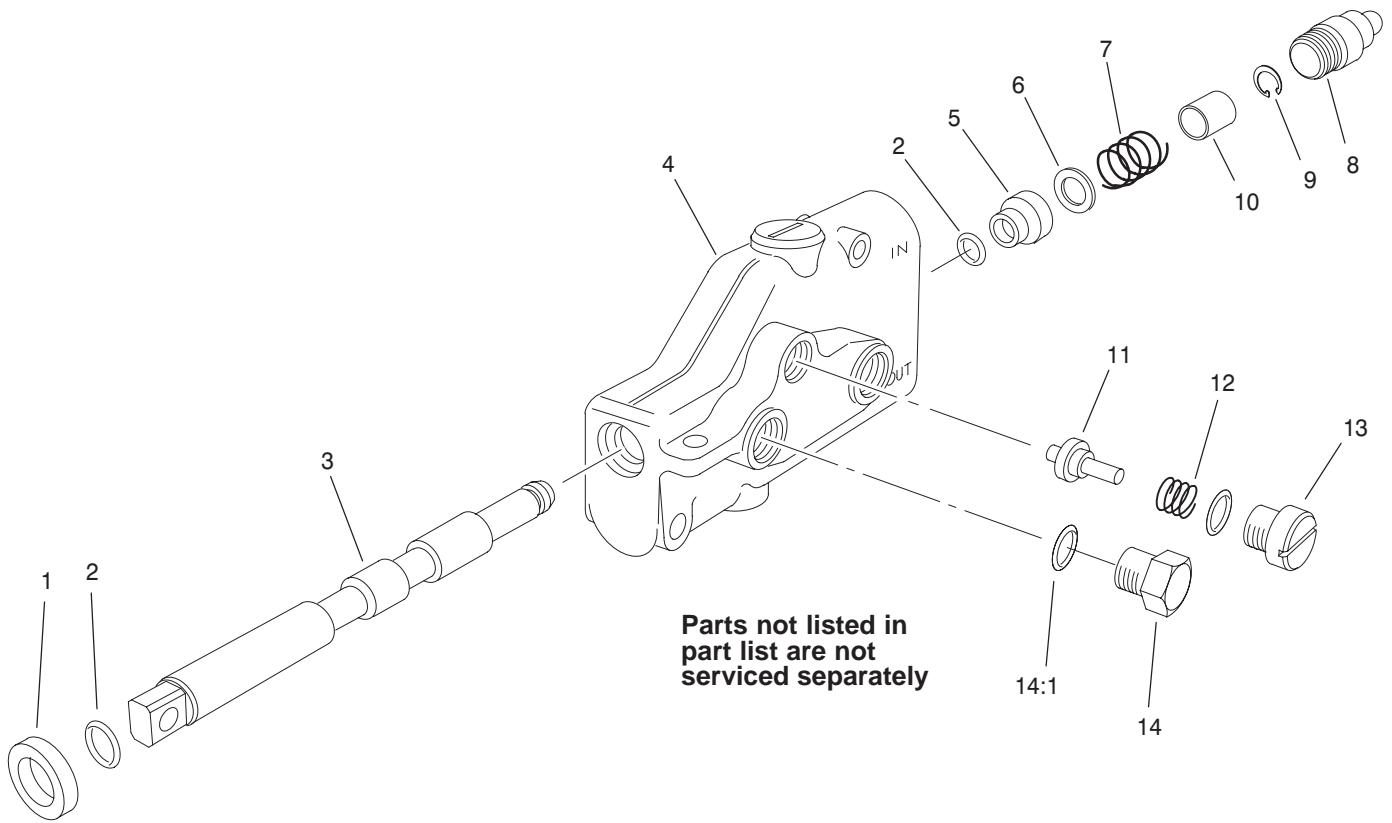


Sheet No.:8

Hydraulic Lift and Throttle Assembly

Ref. No.	Part No.	Qty.	Description
1	3296-29	1	Nut-Lock, NI
2	3253-3	4	Washer-Lock
3	321-4	4	Screw-HH
4	3296-42	2	Nut-Lock, NI
5	3256-22	2	Washer-Flat
6	3256-23	1	Washer-Flat
7	340-77	3	Fitting-HYD, 90°
7:1	237-22	1	O-Ring
7:2	237-42	1	O-Ring
8	3272-10	1	Pin-Cotter
9	283-58	1	Pin-Clevis
10	3272-5	1	Pin-Cotter
11	3296-15	2	Nut-Lock NI
12	3296-12	4	Nut-Lock
13	2412-36	2	Clamp-Hose
14	340-86	1	Fitting-HYD, Tee
14:1	237-22	2	O-Ring
14:2	237-42	1	O-Ring
15	66-8190	1	Hydraulic Hose ASM
16	66-8640	1	Hydraulic Hose ASM
17	66-8150	1	Hose-Hydraulic
18	66-3130	1	Fitting-Special
18:1	237-65	1	O-Ring
19	340-71	1	Fitting-Straight, Bulkhead
19:1	237-22	2	O-Ring

Ref. No.	Part No.	Qty.	Description
20	63-7410	1	Bracket-Bulkhead
21	304-99	2	Stem-Hose
21:1	237-78	1	O-Ring
22	27-4240	2	Pin-Cylinder
23	63-6630	2	Cylinder-Hydraulic
24	3216-3	2	Screw-HH
25	66-2720-03	1	Lever-Valve
26	282-27	1	Clevis
27	3220-2	1	Nut
28	321-11	2	Screw-HH
29	63-7960	1	Valve-Lift
30	2412-58	1	Clamp
31	283-16	1	Pin-Clevis
32	76-4830-03	1	Rod-Valve
33	340-70	1	Nut-Lock
34	70-7530	1	Spring-Compression
35	3272-23	4	Pin-Cotter
36	3256-24	1	Washer-Flat
37	32105-8	1	Screw
38	233-39	2	Knob-Control
39	3256-26	2	Washer-Flat
40	340-2	1	Fitting-HYD, Straight
40:1	237-22	1	O-Ring
40:2	237-42	1	O-Ring
41	3234-13	1	Screw-HHF
42	66-2670	1	Bracket-Throttle



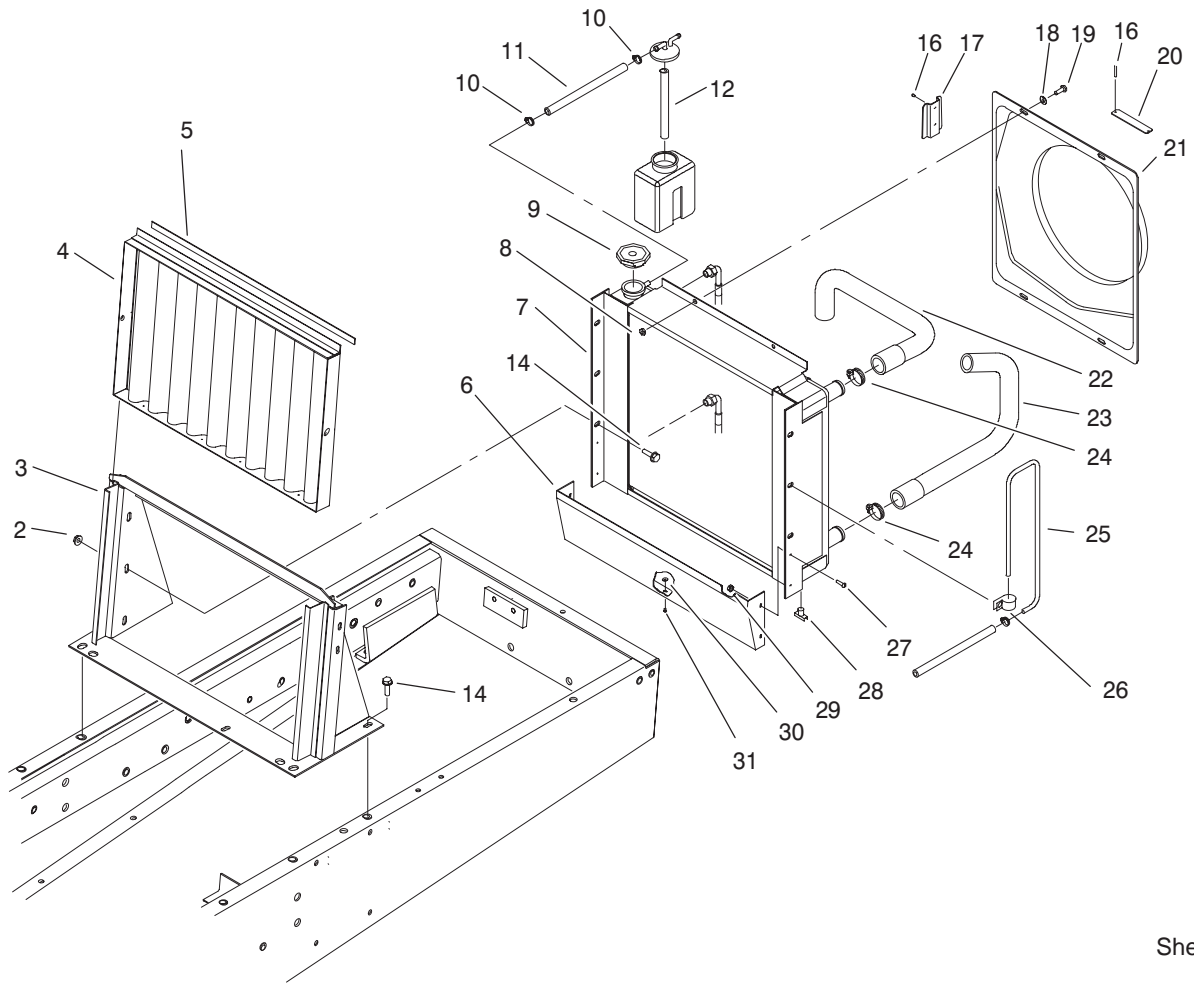
Sheet No.:A3
T-0532

Lift Valve Assembly No. 63-7960

Ref. No.	Part No.	Qty.	Description
1	58-6320	1	Wiper
2	58-6450	2	O-Ring
☆3		1	Spool
☆4		1	Body
5	58-6400	1	Bushing
6	65-2770	1	Washer
7	65-2950	1	Spring
8	58-6420	1	Cap
9	58-6460	1	Ring
10	65-2740	1	Spacer
11	65-2750	1	Plunger
12	65-2760	1	Spring
13	65-2930	1	Plug ASM
14	353-508	1	Plug
14:1	237-42	1	O-Ring

Ref. No.	Part No.	Qty.	Description

☆ Not serviced separately

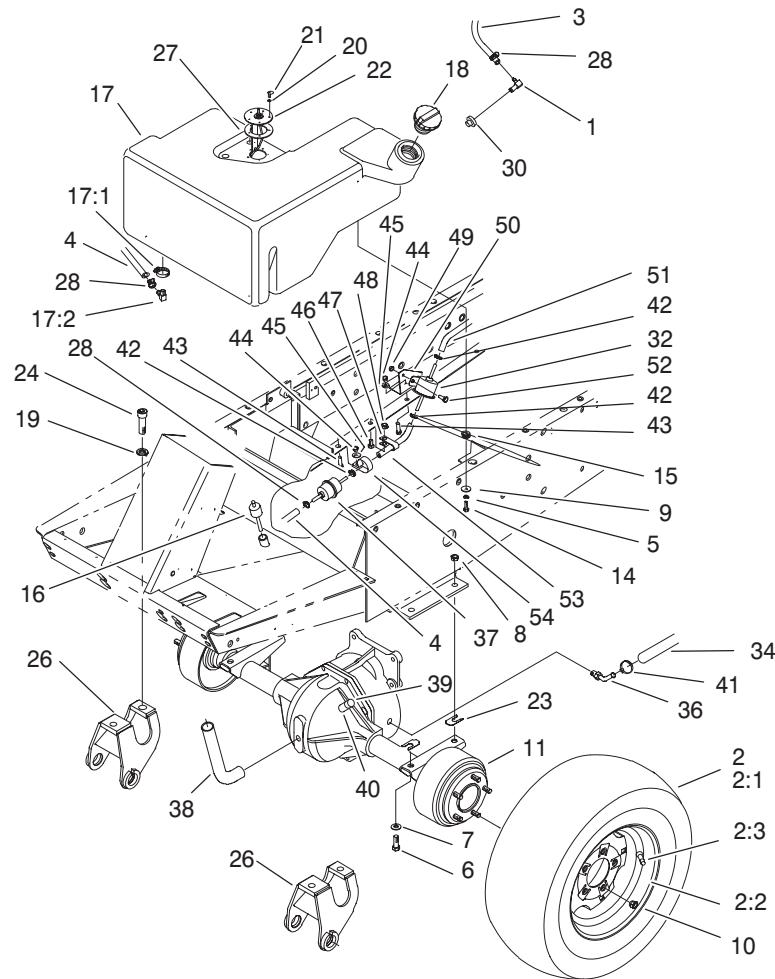


Sheet No.:9

Radiator Assembly

Ref. No.	Part No.	Qty.	Description
2	32128-20	6	Nut-HF
3	92-5757-03	1	Support-Radiator
4	63-7700-03	1	Grill-Front
5	63-7710	1	Strip-Magnetic
6	63-6440-03	1	Shield-Radiator, Bottom
7	63-6150	1	Radiator ASM
8	3296-42	4	Nut-Lock, NI
9	66-3240	1	Cap-Radiator
10	2412-108	3	Clamp-Worm
11	93-2260	1	Hose-Fuel
12	96-1215	1	Hose-Fuel
14	3234-5	8	Screw
16	3290-55	4	Rivet-Pop
17	94-7337	1	Bracket-Bottle, Overflow
18	3256-22	4	Washer-Flat
19	321-4	4	Screw-HH
20	76-8750	1	Plate-Warning
21	94-6750	1	Shroud-Fan
22	94-6756	1	Hose-Radiator
23	94-7421	1	Hose-Radiator, Lower
24	2412-34	4	Clamp-Hose
25	71-1540	1	Tube-Vent
26	2412-103	2	Clamp
27	3249-3	2	Screw

Ref. No.	Part No.	Qty.	Description
28	304-46	1	Draincock
29	3217-29	2	Nut-Hex
30	3269-10	3	Washer-Back
31	3269-13	3	Rivet-Pop

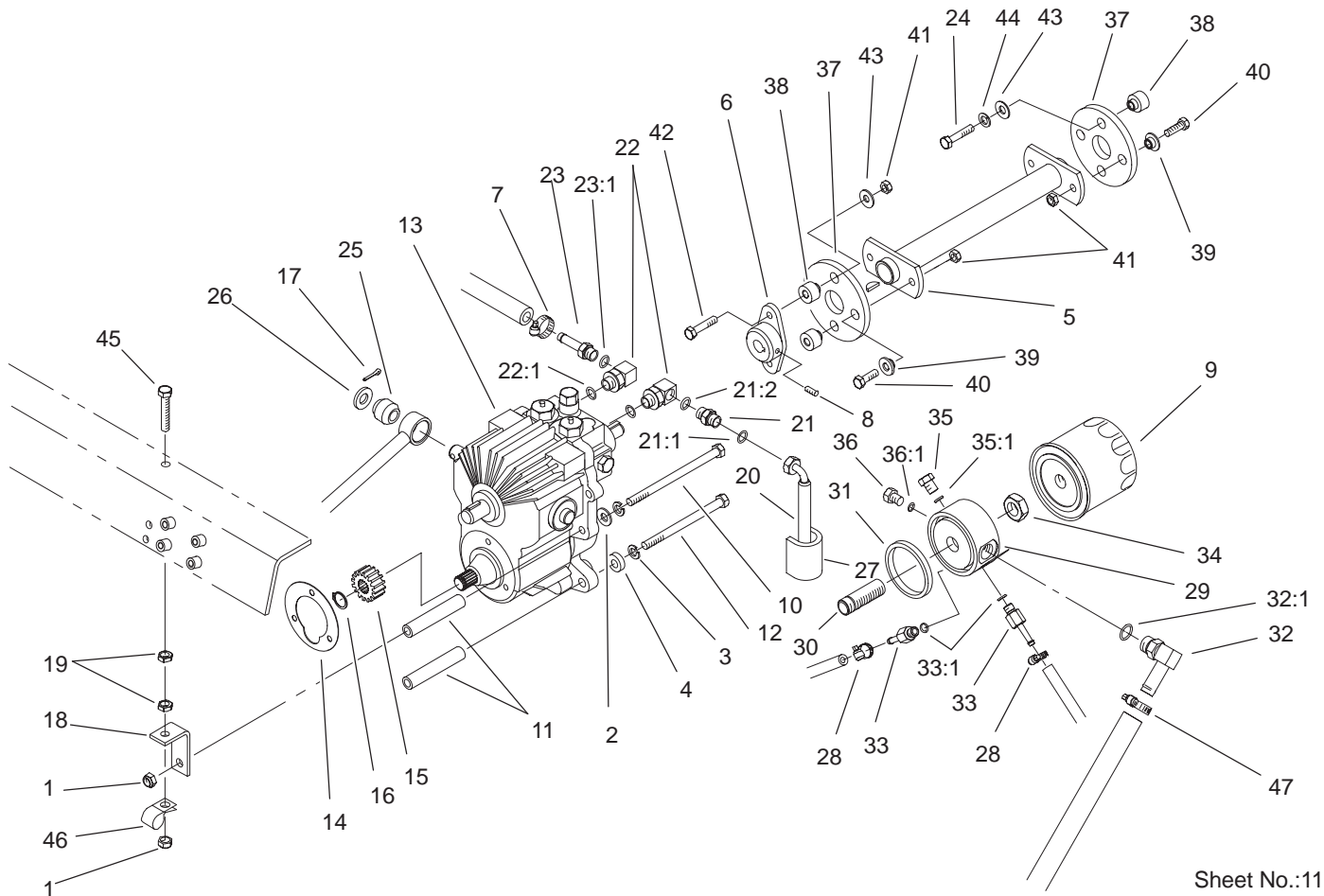


Sheet No.:10

Fuel Tank and Axle Assembly

Ref. No.	Part No.	Qty.	Description	Ref. No.	Part No.	Qty.	Description
1	94-6765	1	Fitting-90°, Barbed	23	42-6080	1	Shim-Axle
☆2		2	Tire ASM	24	3273-38	4	Screw-HSH
2:1	95-3348	1	Tire	26	98-2328-03	2	Bracket-Carrier
2:2	217-117	1	Wheel ASM	27	62-7650	1	Gasket
2:3	232-27	1	Stem-Valve	28	2412-108	3	Clamp-Worm
3	94-1349	1	Hose-Fuel	30	46-6560	1	Bushing
4	63-7627	1	Hose-Fuel	32	99-9196	1	Pump-Fuel
5	3253-3	3	Washer-Lock	34	92-5083	1	Hose-Hydraulic
6	324-5	4	Screw-HH	36	92-5088	1	Fitting-45°, Barbed
7	3256-25	4	Washer-Flat	37	99-9193	1	Filter-Fuel
8	3296-48	4	Nut-Lock NI	38	105-7169	1	Tube-Oil Fill
9	3256-67	3	Washer-Flat	39	2810-1	1	Coupling
10	23-7270	10	Nut-Wheel	40	289-6	1	Nipple-Pipe
11	86-9640-03	1	Front Axle ASM	41	2412-34	1	Clamp-Worm
14	321-5	3	Screw-HH	42	2412-98	3	Clamp
15	237-136	3	Grommet	43	321-6	2	Screw-HH
16	105-7172	1	Dipstick ASM	44	3296-42	2	Nut-Lock, NI
17	98-5002	1	Tank-Fuel	45	3256-22	2	Washer-Flat
17:1	2412-36	1	Clamp-Hose	46	322-5	1	Screw-HH
17:2	353-536	1	Fitting-Elbow, 90°	47	94-6821	1	Clamp-Wire
18	93-7170	1	Cap-Fuel	48	32128-20	1	Nut-HF
19	3253-8	4	Washer-Lock	49	32128-14	2	Nut-HF
20	3253-15	5	Washer-Lock/Sp	50	95-0655	1	Bracket-Fuel Pump
21	32122-24	5	Screw-Pth	51	94-7420	1	Hose-Fuel
22	63-7640	1	Sender-Fuel	52	321-4	2	Screw-HH

☆ Not serviced separately

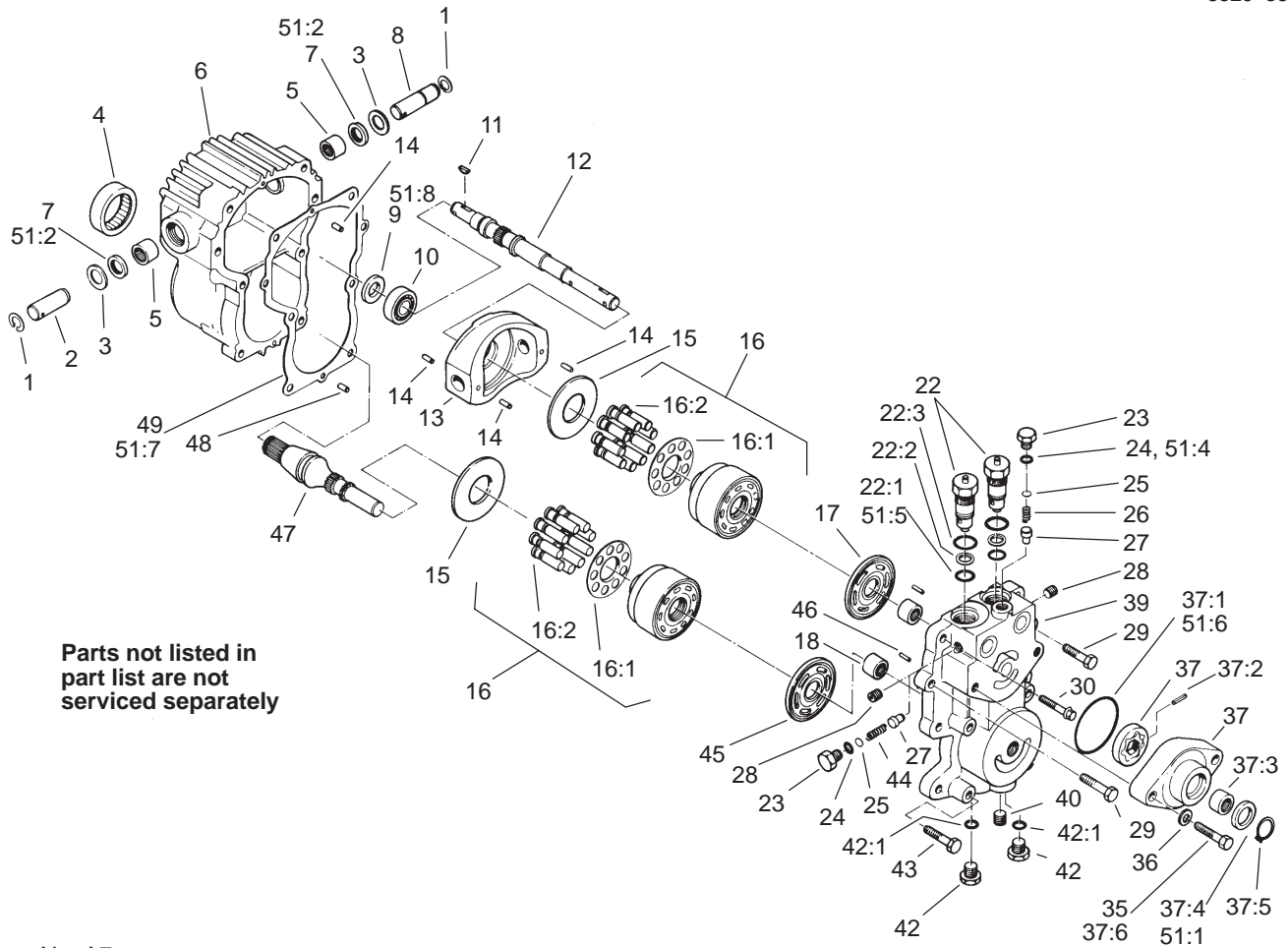


Sheet No.:11

Transmission and Drive Coupling Assembly

Ref. No.	Part No.	Qty.	Description
1	3296-39	2	Nut-Lock, NI
2	3256-24	1	Washer-Flat
3	3253-21	4	Washer-Lock
4	5-0652	1	Spacer
5	94-9400-03	1	Driveshaft
6	27-4370	1	Hub-Pump
7	2412-36	1	Clamp-Hose
8	3241-6	2	Screw-SQH
9	23-2300	1	Filter-Oil, Transmission
10	27-9620	1	Screw-HH
11	27-3680	4	Spacer-Mounting
12	323-39	3	Screw-HH
13	92-5513	1	Transmission
14	27-3690	1	Gasket-Transmission
15	86-7220	1	Gear-Pinion
16	32120-72	1	Ring-Snap
17	3272-10	1	Pin-Cotter
18	63-7170	1	Anchor-Transmission
19	3218-3	2	Nut-Jam
20	66-8490	1	HYD Hose ASM
21	82-8530	1	Fitting-HYD, Special
21:1	237-42	1	O-Ring
21:2	237-22	1	O-Ring
22	66-3110	2	Fitting-HYD, 90°
22:1	237-65	1	O-Ring

Ref. No.	Part No.	Qty.	Description
23	353-979	1	Fitting-Barb, Straight
23:1	237-42	1	O-Ring
24	33104-040	2	Screw-HHF
25	23-2270	1	Bushing-Rubber
26	3256-26	1	Washer-Flat
27	38-3400	1	Guard-Rubber
28	2412-108	2	Clamp-Worm
29	92-5076	1	Adapter-Filter
30	92-5085	1	Union-Filter
31	92-5087	1	Seal-Adapter, Filter
32	92-5086	1	Fitting-HYD, 90°
32:1	237-79	1	O-Ring
33	92-5512	2	Fitting-Hose, Barbed
33:1	237-78	1	O-Ring
34	3220-7	1	Nut-Jam
35	353-990	1	Plug
35:1	237-78	1	O-Ring
36	353-988	1	Plug-Hex, Hollow
36:1	237-79	1	O-Ring
37	44-2230	2	Coupling-Rubber
38	27-6590	4	Spacer-Coupling, Rubber
39	27-6600	4	Spacer-Coupling
40	3210-5	4	Screw-HH
41	32152-5	6	Nut-Conelock
42	3210-8	2	Screw-HH



Sheet No.:A7

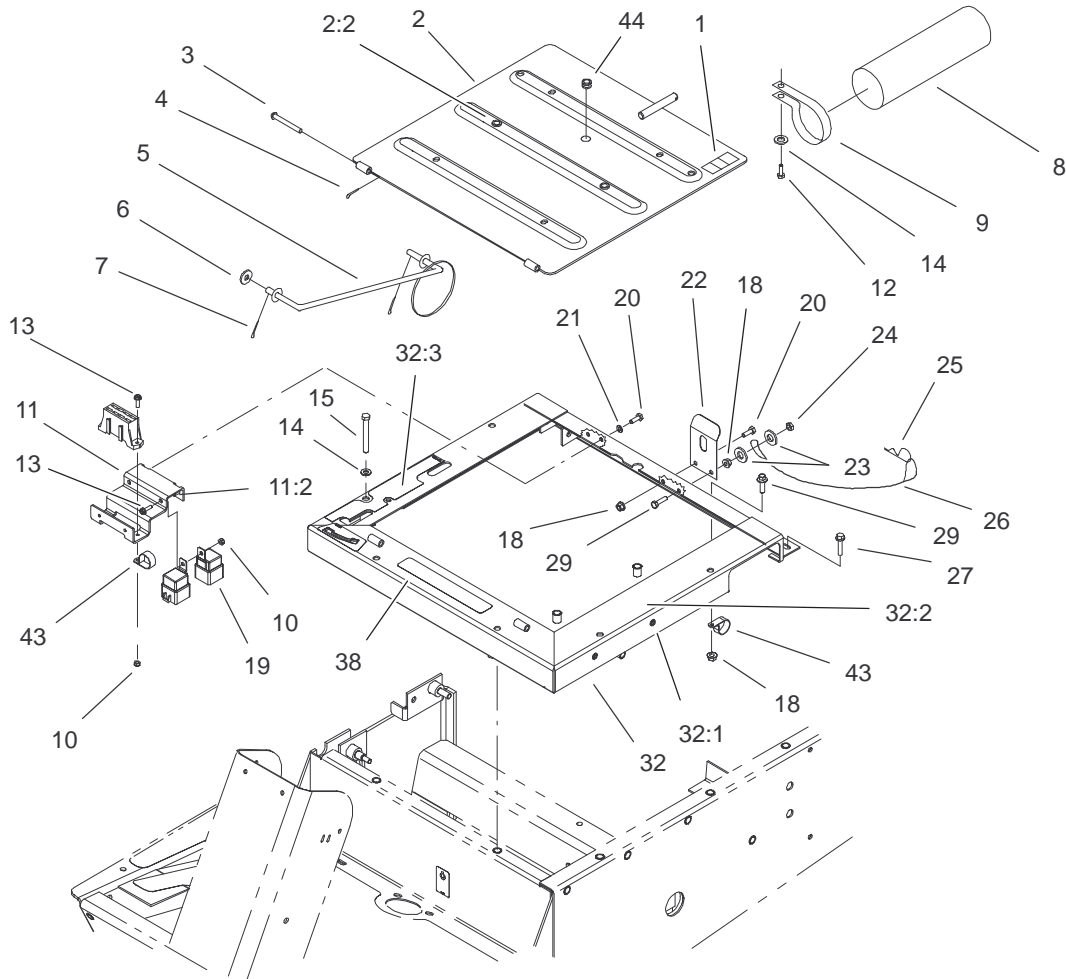
T-0536

Transmission Assembly No. 92-5513

Ref. No.	Part No.	Qty.	Description
1	32151-46	2	Ring-Retaining
2	25-2500	1	Shaft-Trunnion
3	25-2510	2	Washer-Flat
4	28-3300	1	Bearing-Roller
5	252-82	2	Bearing-Needle
6	92-5709	1	Housing-Transmission
7	25-3210	2	Seal-Lip
8	28-3670	1	Shaft-Trunnion
9	93-4133	1	Seal-Lip
10	28-3650	1	Bearing-Ball
11	3257-5	2	Key-Woodruff
12	28-3640	1	Shaft-Pump
13	49-7820	1	Swashplate-Variable
14	32121-91	3	Pin-Spring, Coil
15	25-2380	2	Plate-Thrust
16	48-1800	2	Cylinder Block Kit
☆16:1		1	Retainer-Slipper
☆16:2		9	Piston ASM
17	46-7320	1	Plate-Valve, Pump
18	25-3300	2	Bearing-Needle
22	49-7830	2	Check Valve Kit
22:1	28-3590	2	O-Ring
22:2	28-3580	2	Ring-Back Up
22:3	28-3570	2	O-Ring
23	25-2460	2	Plug-HH
24	28-3400	2	O-Ring

Ref. No.	Part No.	Qty.	Description
25	25-2470	1	Pack-Shim
26	46-7310	1	Spring
27	83-7260	2	Cone-Relief, Charge
28	285-17	4	Plug-Pipe
29	323-8	2	Screw-HH
30	28-3530	2	Capscrew
36	28-3450	2	Washer
37	38-2670	1	Charge Pump Kit
37:1	28-3520	1	O-Ring
37:2	38-2680	1	Pin
37:3	28-3480	1	Bearing
37:4	94-2975	1	Seal-Shaft
37:5	94-2976	1	Ring-Retaining
37:6	324-23	2	Screw-HH
39	92-5716	1	Section-Center
40	92-5717	1	Plug-Pipe
42	28-3440	2	Plug-Threaded
42:1	75-0240	1	O-Ring
43	323-10	4	Screw-HH
44	25-2480	1	Spring-Valve
45	28-3380	1	Plate-Valve, Motor
46	25-2430	2	Pin-Dowel
47	49-8200	1	Shaft-Motor
48	353-599	2	Pin-Dowel
49	28-3340	1	Gasket
51	106-4384	1	Seal Kit (15 Series)

☆ Not serviced separately

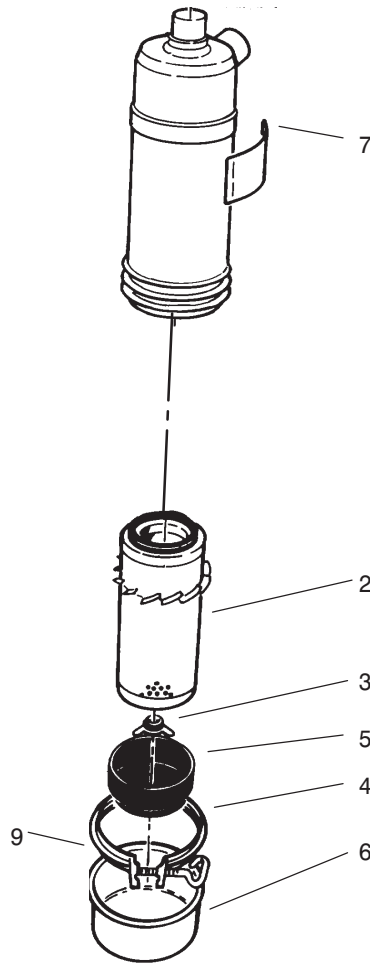


Sheet No.:13

Seat Frame Assembly

Ref. No.	Part No.	Qty.	Description
1	71-3730	1	Decal-Gas
2	92-5759	1	Plate-Seat
2:2	32148-9	2	Insert-Nut
3	283-49	2	Pin-Clevis
4	3272-4	2	Pin-Cotter
5	66-2800-03	1	Rod-Support
6	3256-24	1	Washer-Flat
7	3272-11	2	Pin-Cotter
8	74-0720	1	Tube-Manual
9	2412-133	2	R-Clamp
10	3296-12	4	Nut-Lock
11	105-0036	1	Fuse Block Bracket ASM
11:2	32148-6	2	Insert-Nut
12	322-5	2	Screw-HH
13	32105-13	4	Screw-SHH
14	3256-23	8	Washer-Flat
15	322-13	6	Screw-HH
18	32128-33	3	Nut-HF
19	70-1480	4	Relay
20	321-4	3	Screw-HH
21	3253-3	2	Washer-Lock
22	66-2630	1	Latch-Seat
23	3256-22	2	Washer-Flat
24	3296-56	1	Nut-Lock, NI
25	3290-255	1	Pin-Hair

Ref. No.	Part No.	Qty.	Description
26	28-8070	1	Lanyard
27	3234-17	2	Screw-HHF
29	321-5	2	Screw-HH
32	92-8877	1	Seat Frame ASM
32:1	32148-6	4	Insert-Nut
32:2	67-1710	1	Decal-Warning
32:3	93-7833	1	Decal-Throttle And Lift Control
38	105-9584	1	Decal-Starting Instructions
43	2412-106	2	Clamp-R
44	240-5	1	Grommet

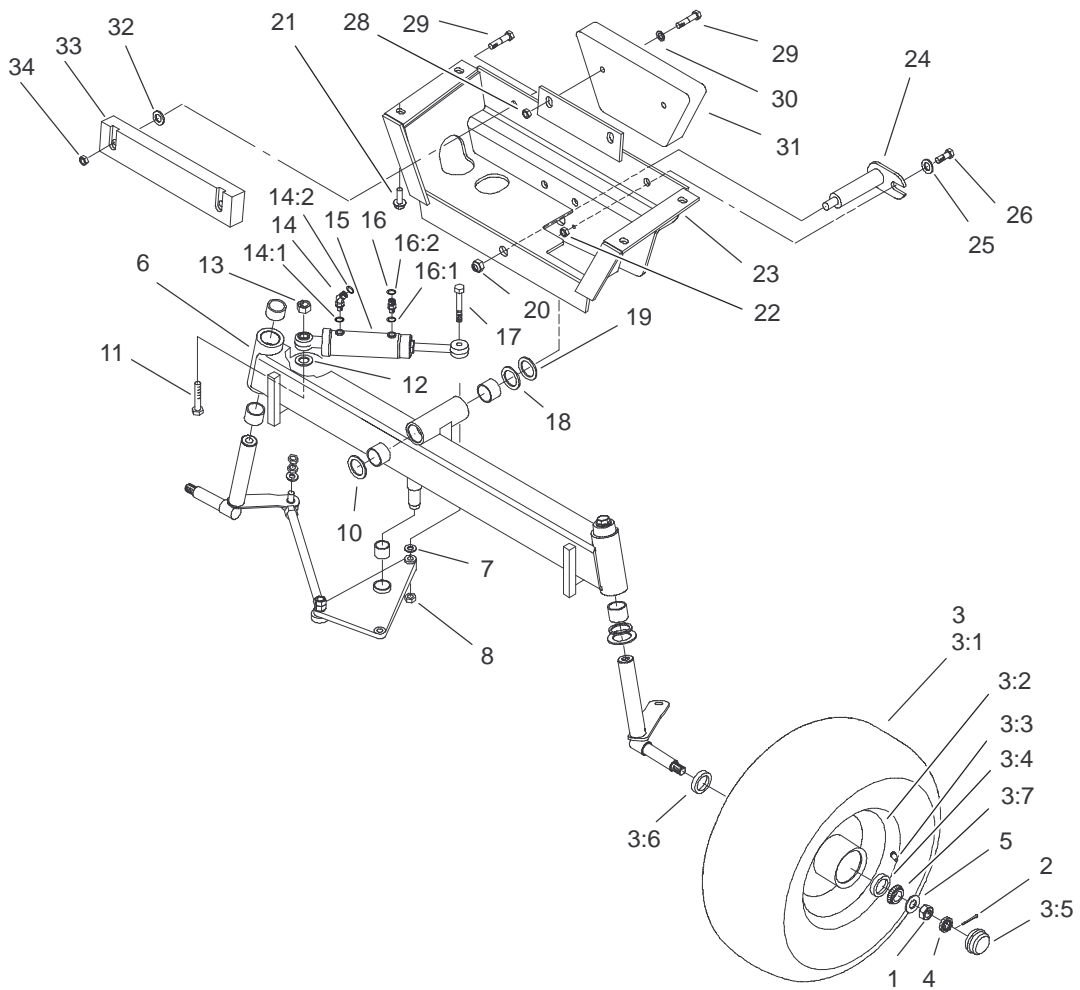


Sheet No.:A8
T-3786

Air Cleaner Assembly No. 27-7100

Ref. No.	Part No.	Qty.	Description
2	27-7110	1	Air Cleaner ASM
3	27-7120	1	Nut And Gasket ASM
4	27-7130	1	Clamp ASM
5	27-7140	1	Skirt-Baffle
6	27-7150	1	A/C Cup ASM
7	27-7160	1	Decal-Installation
9	80-3330	1	Gasket

Ref. No.	Part No.	Qty.	Description



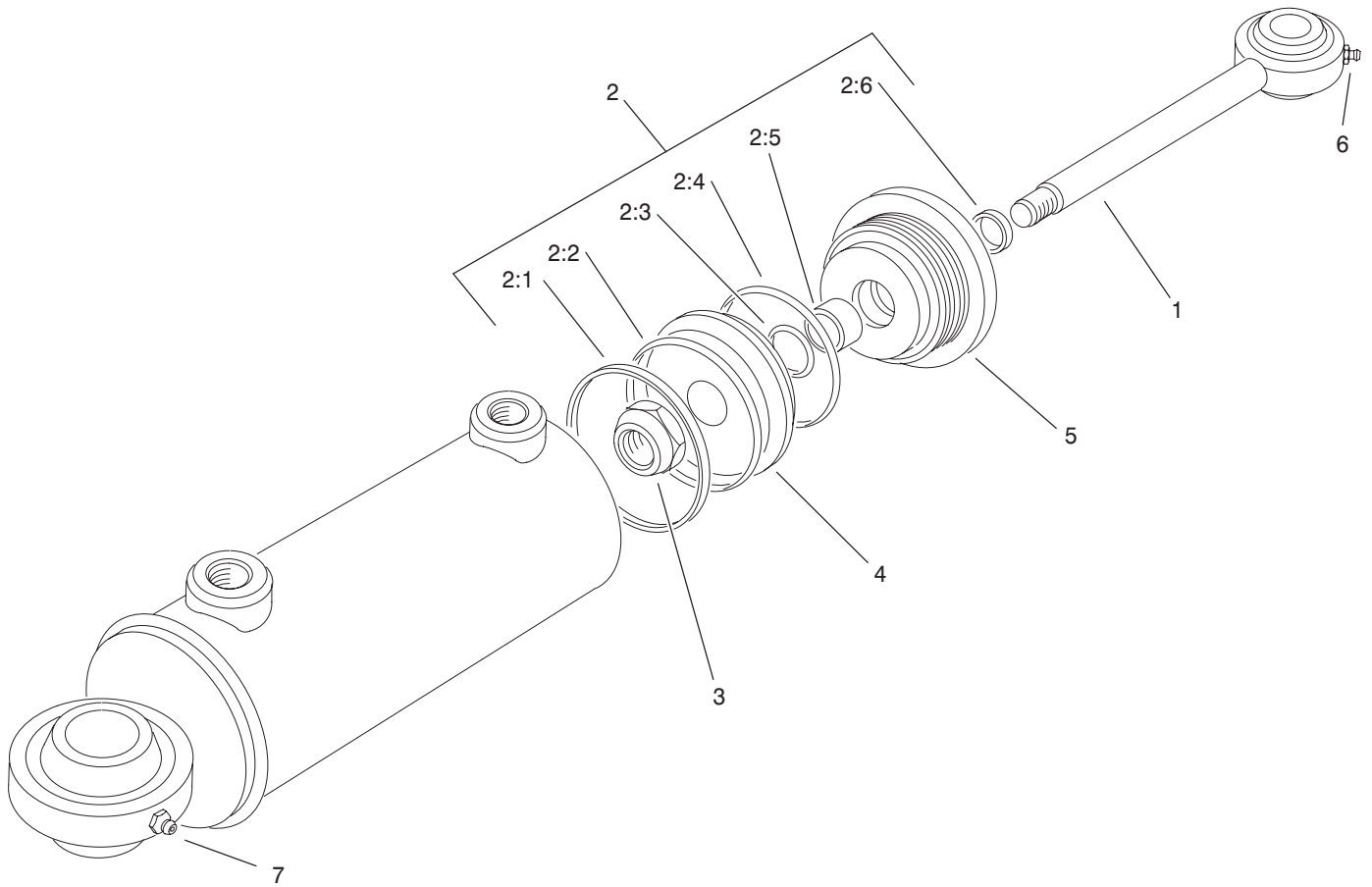
Sheet No.:15

Rear Axle Assembly

Ref. No.	Part No.	Qty.	Description
1	3220-7	2	Nut-Jam
2	3272-13	2	Pin-Cotter
☆3		2	Wheel And Tire ASM
3:1	231-105	1	Tire
3:2	217-118	1	Rim
3:3	232-35	1	Stem-Valve
3:4	254-72	2	Bearing-Cup, Tapered
3:5	241-119	1	Cap-Dust
3:6	253-129	1	Seal
3:7	254-94	2	Bearing-Cone, Taper
4	93-0307	2	Nut-Lock, Retainer
5	93-0309	2	Washer-Tab
☆6		1	Rear Axle ASM
7	67-9410	1	Washer
8	32128-45	1	Locknut-Flange
10	71-4540	1	Washer-Thrust
11	67-7300	1	Screw-HH
12	67-7250	1	Spacer-Ring
13	32153-6	1	Locknut
14	340-103	1	Fitting-HYD, 45°
14:1	237-78	1	O-Ring
14:2	237-21	1	O-Ring
15	76-2070	1	Cylinder-Steering
16	340-92	1	Fitting-HYD, Straight
16:1	237-78	1	O-Ring
16:2	237-21	1	O-Ring

Ref. No.	Part No.	Qty.	Description
17	328-25	1	Screw-HH
18	10-8110	1	Washer-Thrust
19	56-2460	1	Washer-Flat
20	3296-51	1	Nut-Lock, NI
21	3234-25	4	Bolt-HF
22	3296-42	1	Nut-Lock, NI
23	63-6430-03	1	Frame-Rear
24	63-6770-03	1	Pin-Masked
25	3256-22	1	Washer-Flat
26	321-4	1	Screw-HH
28	3296-25	2	Nut-Lock, NI
29	325-9	4	Screw-HH
30	3253-7	2	Washer-Lock
31	24-5790-01	1	Weight-Rear
32	70-8040	2	Washer
33	92-8762-03	1	Weight-20 Lb
34	3296-45	2	Nut-Lock, NI

☆ Not serviced separately



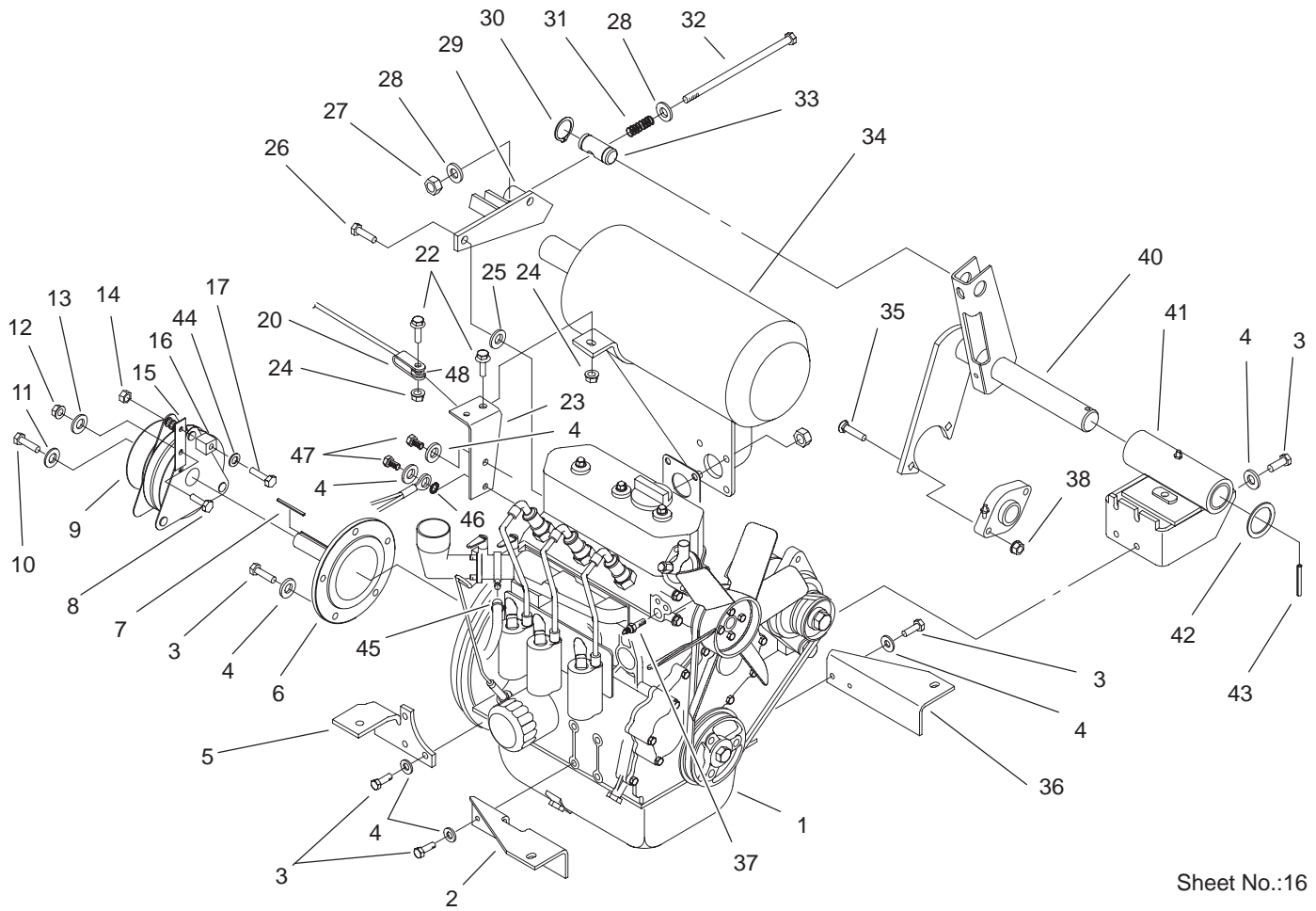
T-0541
Sheet No.:B1

Steering Cylinder Assembly No. 76-2070

Ref. No.	Part No.	Qty.	Description
☆1		1	Rod-Piston
2	76-2090	1	Seal Kit
☆2:1		1	Seal
☆2:2		1	O-Ring
☆2:3		1	O-Ring
☆2:4		1	O-Ring
☆2:5		1	U-Cup
☆2:6		1	Wiper
☆3		1	Nut-Lock
☆4		1	Piston
☆5		1	Gland
6	302-40	1	Fitting-Grease
7	302-5	1	Fitting-Grease

Ref. No.	Part No.	Qty.	Description

☆ Not serviced separately

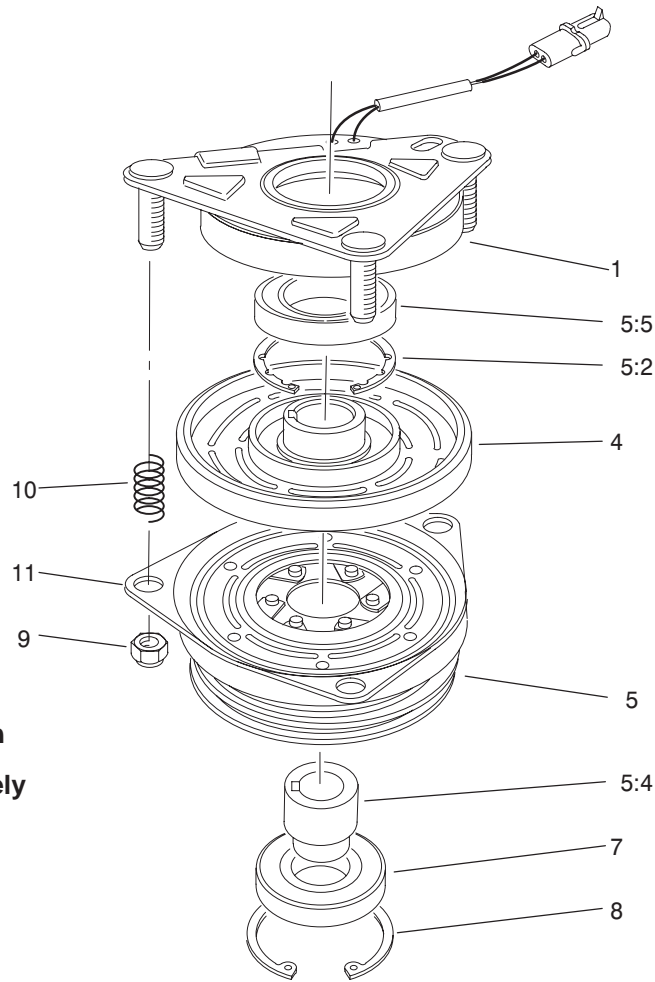


Sheet No.:16

Engine Installation Assembly

Ref. No.	Part No.	Qty.	Description
1	99-8440	1	Engine-Briggs Diahatsu Dm950g
2	95-3300-03	1	Bracket-Mounting
3	66-3160	16	Screw-Cap
4	48-8030	18	Washer
5	94-7416-03	1	Bracket-Mounting
6	94-7430	1	Hub-Clutch
7	18-6430	1	Key-Square
8	323-34	1	Screw-HH
9	100-6565	1	Electric Clutch/Brake ASM
10	3212-5	1	Screw-HH
11	105-3698	1	Spacer
12	3296-59	1	Nut-Lock, NI
13	3256-24	2	Washer-Flat
14	32153-4	1	Locknut
15	94-7438	1	Anchor-Lever, Clutch
16	95-6328	1	Bumper-Electric Clutch
17	321-8	1	Screw-HH
20	66-2870	1	Cable-Hood Stop
22	3234-29	2	Screw-HHF
23	94-7433-03	1	Support-Muffler
24	32128-20	2	Nut-HF
25	5-0652	1	Spacer
26	43-0090	2	Screw-HH

Ref. No.	Part No.	Qty.	Description
27	32153-3	1	Nut-Lock
28	4-2390	2	Washer-Flat
29	94-7434-03	1	Bracket-Mounting
30	32151-83	2	Ring-Snap
31	3-6624	1	Spring-Compression
32	94-7431	1	Bolt-HH
33	63-6290	1	Pin-PTO Tension
34	94-6412	1	Muffler-Exhaust
35	3230-4	2	Screw-CARR
36	95-3097-03	1	Bracket-Mounting
37	94-7621	1	Sender-Temperature, Ds
38	32149-1	2	Nut
40	63-6250-03	1	Shaft-PTO Tension
41	94-7344	1	Pivot Plate ASM
42	3-4324	1	Washer-Flat
43	32121-32	1	Pin-Roll
44	3256-60	1	Washer-Flat
45	2412-98	1	Clamp
46	3255-8	1	Washer-Lock
47	33114-020	2	Screw-HH
48	3256-23	2	Washer-Flat



Sheet No.:B2
T-0544

Electric Clutch / Brake Assembly No. 100-6565

Ref. No.	Part No.	Qty.	Description
1	100-6563	1	Field And Rotor
*☆2		1	Bearing-Field
*☆3		1	Ring-Retaining
*☆4		1	Field Coil ASM
5	67-7070	1	Armature And Pulley ASM
5:2	67-7060	1	Ring-Retaining
5:4	67-7080	1	Sleeve-Bearing, Armature
5:5	67-7090	1	Bearing-Armature
*☆6		1	Collar-Bearing
7	67-7090	1	Bearing-Armature
8	67-7060	1	Ring-Retaining
9	3296-6	3	Nut-Lock, NI
10	44-8320	3	Spring
11	67-7100	1	Plate-Brake

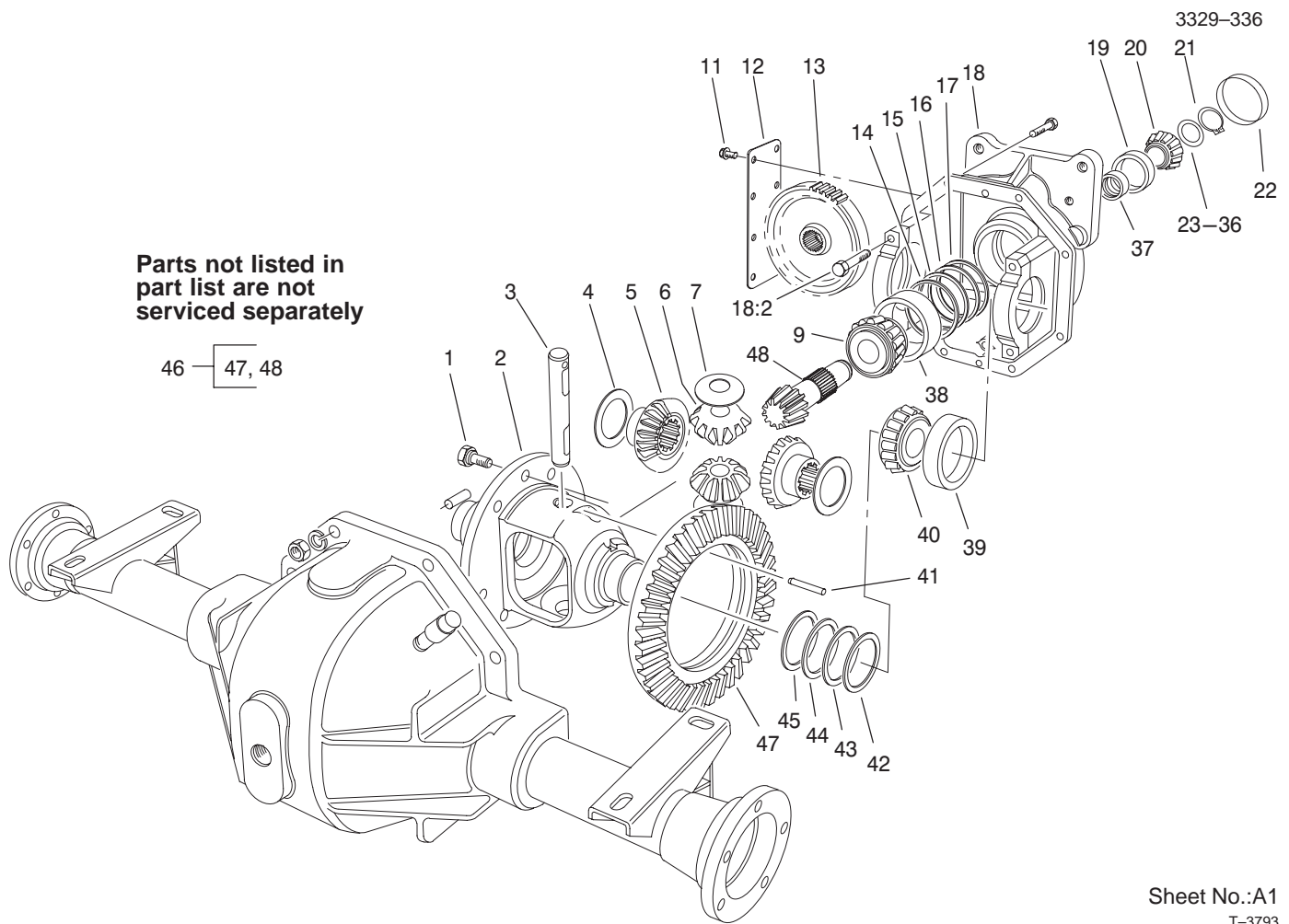
Ref. No.	Part No.	Qty.	Description

☆ Not serviced separately
* Not illustrated

Electrical Schematic (Continued)

Ref. No.	Part No.	Qty.	Description
1	105-2529	1	Harness-Wire, Main
2	105-0024	1	Harness-Wire, Gauges
3	105-0025	1	Harness-Wire, Seat
4	218-581	1	Fuse-15 Amp, 32 Volt
5	218-574	2	Fuse 7.5 Amp(Blade Style)
6	219-17	4	Bulb
7	99-3441	1	Harness-Wire, Fusible Link
8	100-4918	3	Diode

Ref. No.	Part No.	Qty.	Description

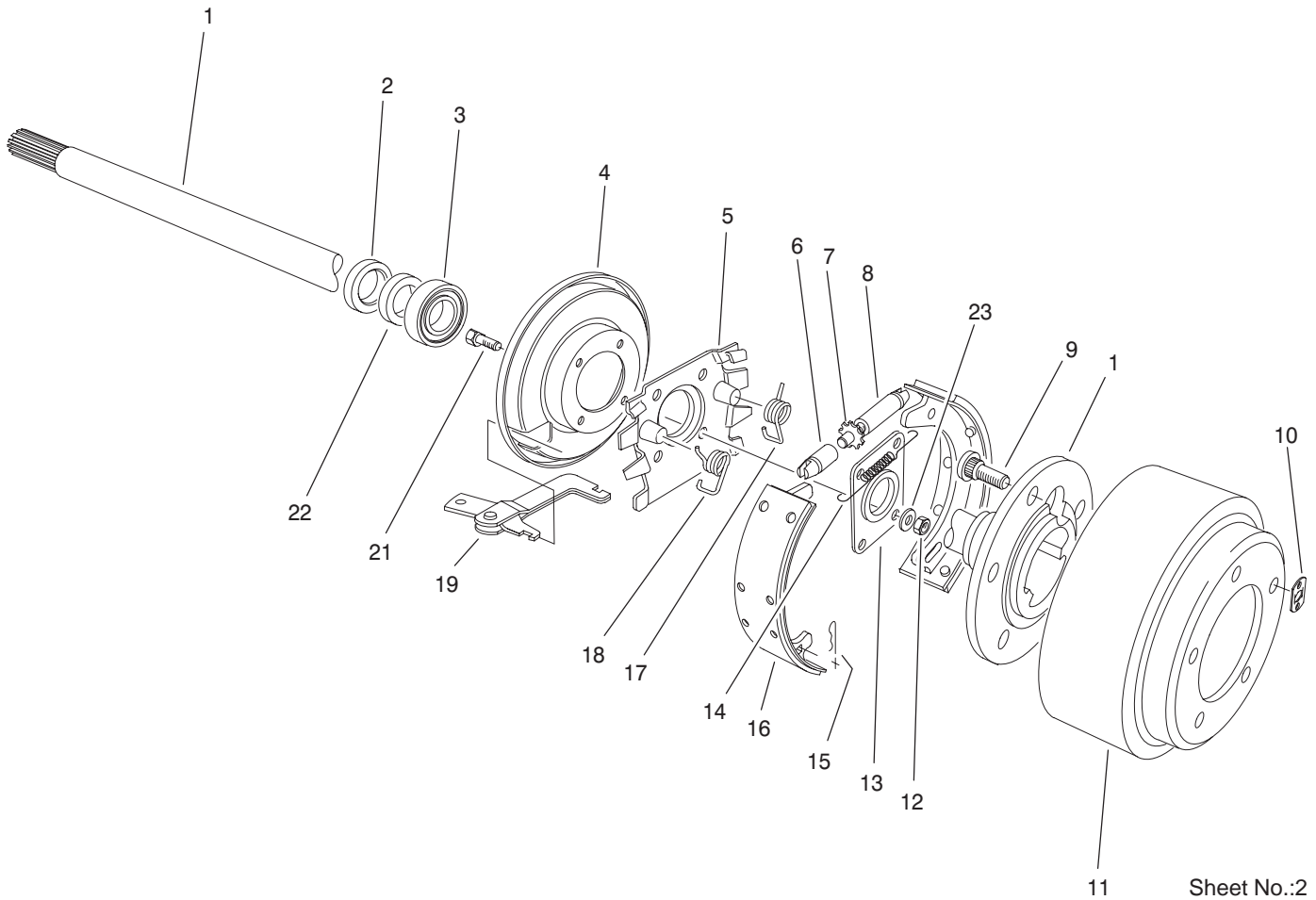


Sheet No.:A1
T-3793

Differential Carrier Assembly No. 92-4909

Ref. No.	Part No.	Qty.	Description
1	21-7770	5	Screw-Gear, Drive
2	21-7670	1	Case-Differential
3	21-7700	1	Shaft-Pinion Mate
4	21-7720	2	Washer-Thrust
5	24-8790	2	Gear-Differential
6	21-7690	2	Pinion-Differential
7	21-7730	2	Washer-Thrust, Pinion
9	43-6760	1	Bearing-Roller, Cone Taper
11	12-5450	8	Screw
12	21-7830	1	Cover-Gear
13	86-7230	1	Gear-Input, Transmission
14	43-6710	1	Shim
15	43-6711	1	Shim
16	43-6712	1	Shim
17	43-6713	1	Shim
18	86-7930	1	Upper Housing ASM
18:2	92-1773	4	Screw-HHF
19	254-90	1	Bearing-Cup
20	254-91	1	Cone-Bearing
21	43-6550	1	Ring-Snap
22	21-7850	1	Cup Plug
23	46-2210	1	Shim-Front Bearing
24	46-2211	1	Shim-Front Bearing, .033

Ref. No.	Part No.	Qty.	Description
25	46-2212	1	Shim-Front Bearing, .035
26	46-2213	1	Shim-Front Bearing, .037
27	46-2214	1	Shim-Front Bearing, .039
28	46-2215	1	Shim-Front Bearing, .041
29	46-2216	1	Shim-Front Bearing, .043
30	46-2220	1	Shim-Front Bearing, .045
31	46-2221	1	Shim-Front Bearing, .047
32	46-2222	1	Shim-Front Bearing, .049
33	46-2223	1	Shim-Front Bearing, .051
34	46-2224	1	Shim-Front Bearing, .053
35	46-2225	1	Shim-Front Bearing, .055
36	46-2226	1	Shim-Front Bearing, .057
37	21-8020	1	Spacer-Bearing
38	43-6750	1	Bearing-Taper, Cup



Sheet No.:2

T-2664

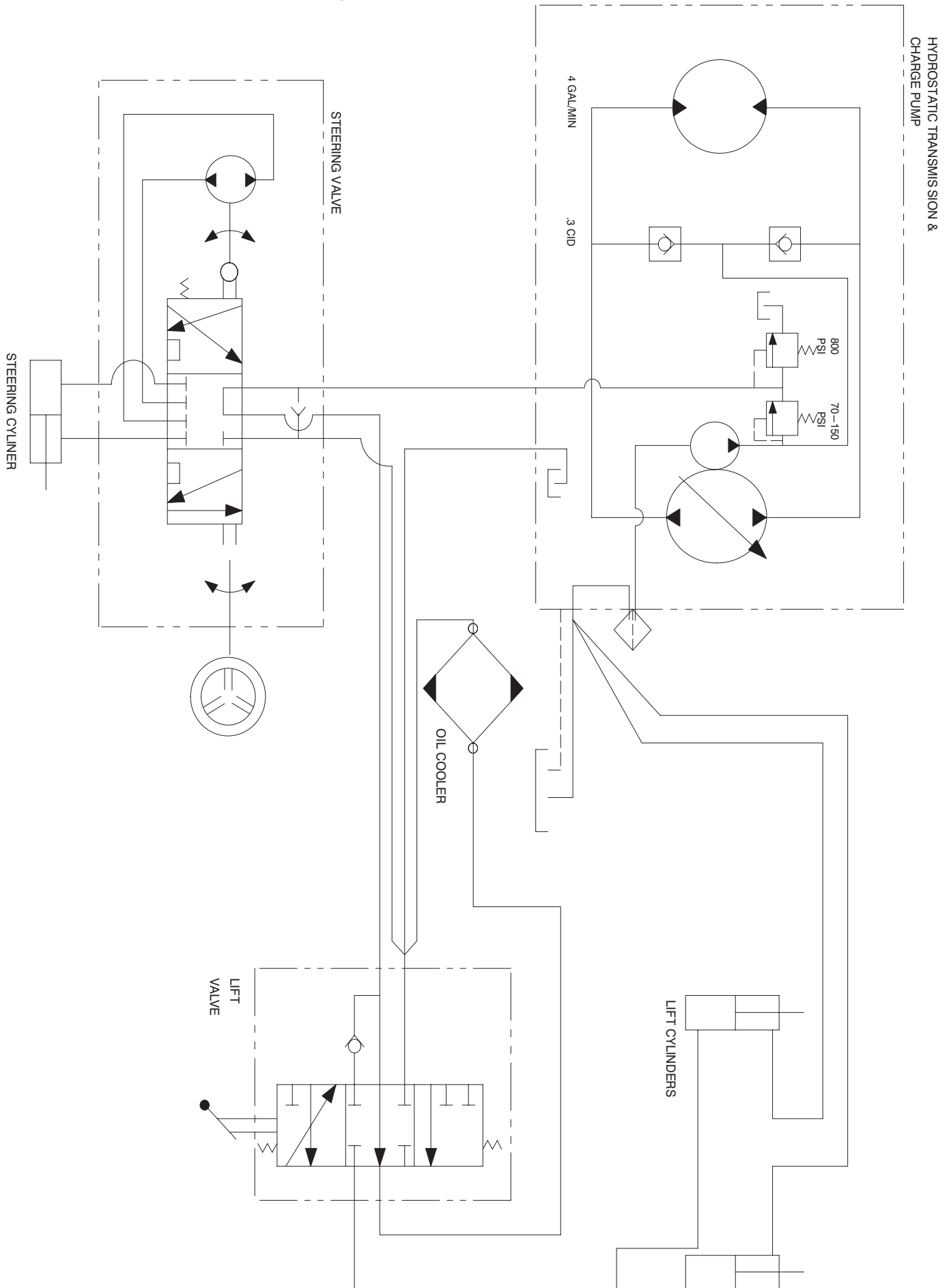
Brake Assembly

Ref. No.	Part No.	Qty.	Description
*1	27-6851	1	Shaft-Flanged Axle, RH
1	27-6861	1	Shaft-Flanged Axle, LH
2	92-1774	2	Seal-Oil
3	21-8180	2	Bearing ASM
4	21-9450	2	Shield-Dust
5	43-6810	2	Spider-Torque
6	21-9390	2	Socket-Adjusting, Screw
7	21-9370	2	Screw-Adjusting
8	21-9380	2	Nut-Pivot
9	242-34	10	Stud-Drive
10	21-8360	2	Locknut
11	28-0680	2	Drum-Brake
12	94-6935	8	Locknut
13	28-0670	2	Seal-Grease
14	21-9440	2	Spring-Adjusting Screw
15	21-9460	4	Retainer-Lever, Brake
16	84-8600	1	Set-Shoes, Lined
17	21-9430	2	Spring-Return, RH
18	21-9420	2	Spring-Return, LH
19	24-9180	2	Strut And Lever ASM
21	94-6934	8	Screw-HH, Brake

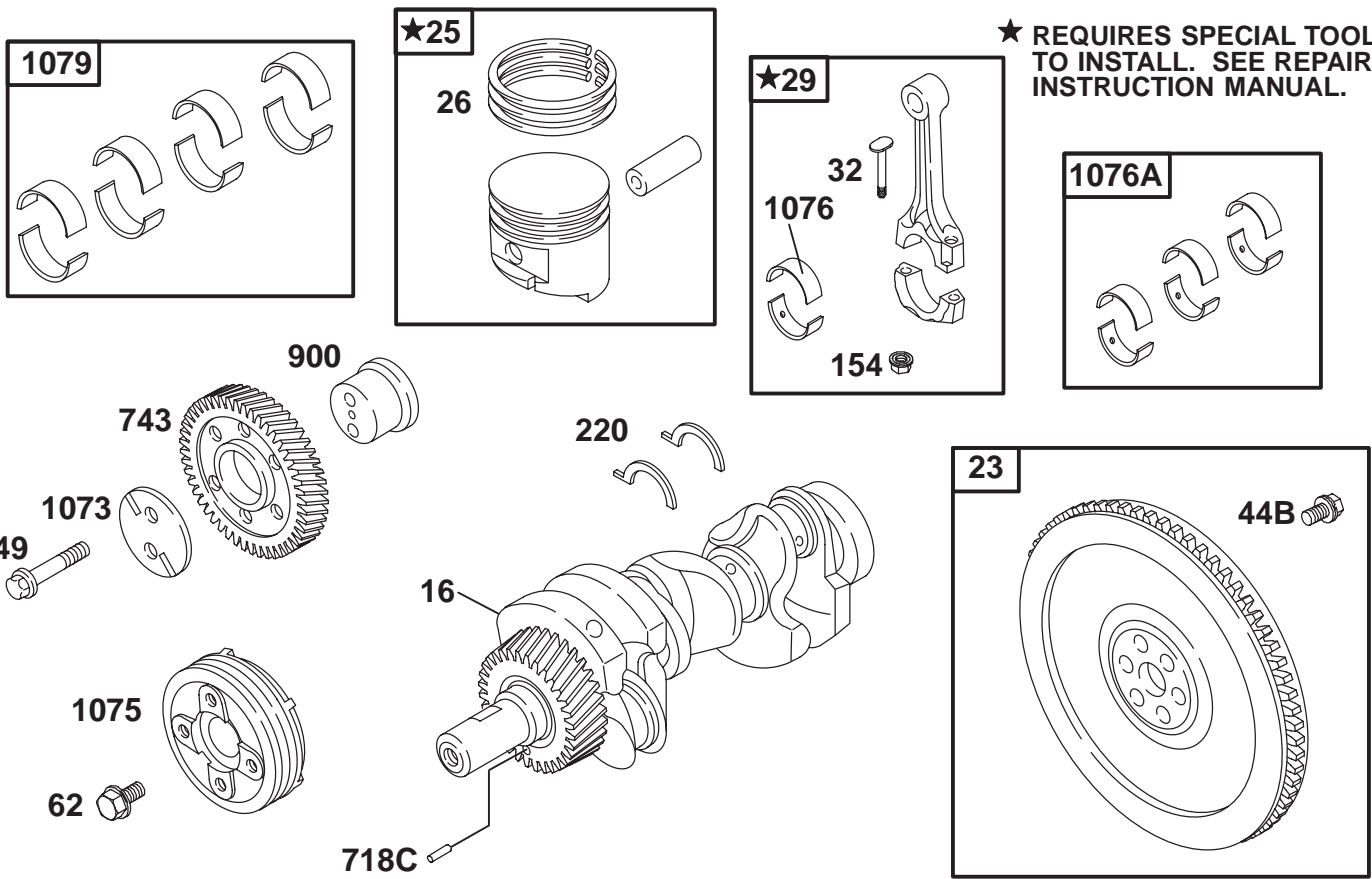
Ref. No.	Part No.	Qty.	Description
22	24-8840	2	Ring-Retaining, Wheel Bearing
23	94-6936	8	Washer-Hardened
*24	92-8775	1	Liquid Gasket Kit

* Not illustrated

Hydraulic Schematic



★ REQUIRES SPECIAL TOOLS TO INSTALL. SEE REPAIR INSTRUCTION MANUAL.

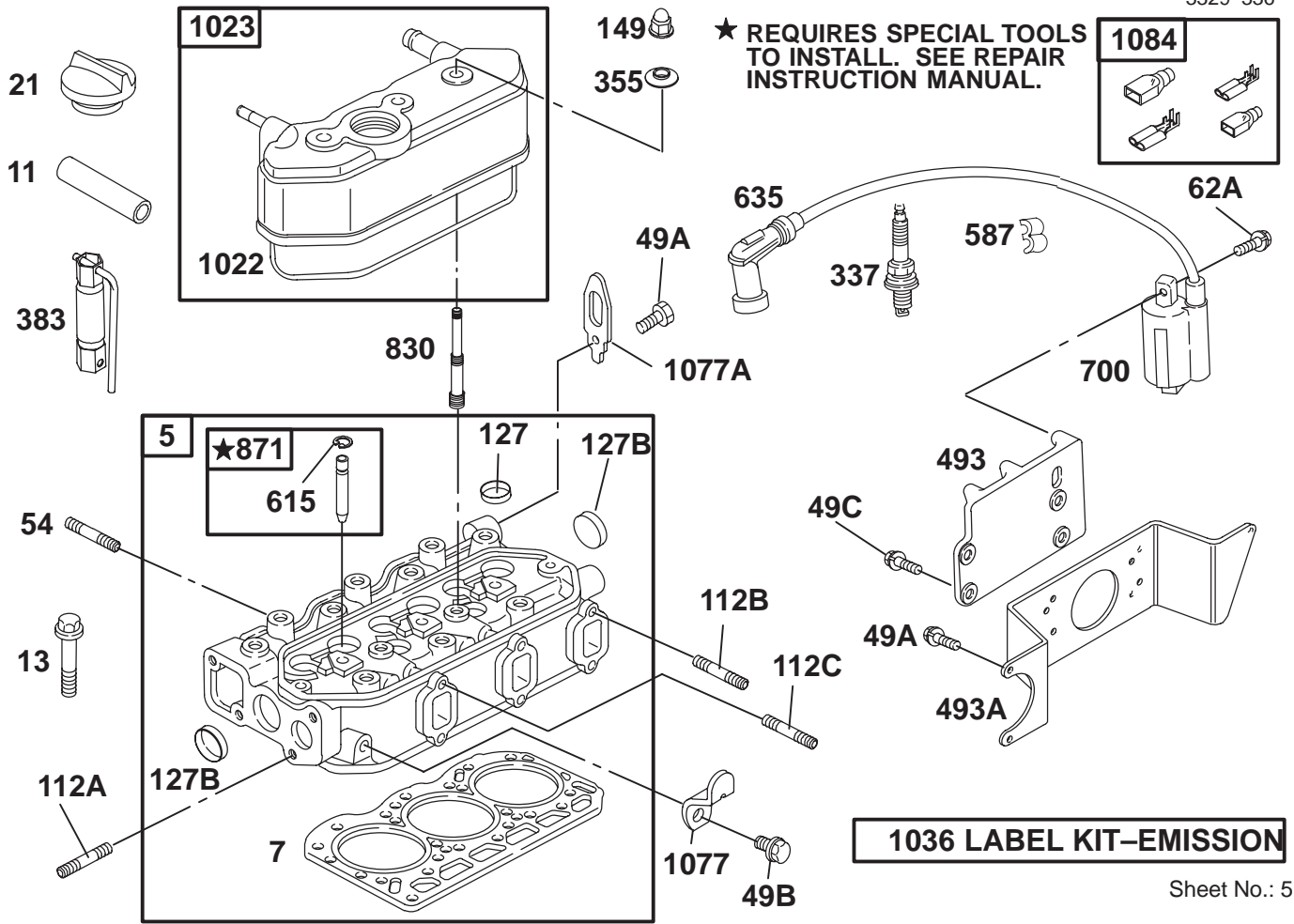


Sheet No.: 4

Crankshaft Assembly

Ref. No.	Part No.	Qty.	Description
1073	99-9040	1	Plate-Gear, Idler
1075	99-9041	1	Pulley-Crankshaft
1076	99-9042	3	Bearing-Rod
1076A	99-9043	3	Bearing Set-Rod
1076A	99-9044	3	Bearing Set-Rod, .010 Undersize
1079	99-9045	4	Bearing Set-Main
1079	99-9046	4	Bearing Set-Main, .010 Undersize
154	99-9034	6	Nut-Hex
16	99-9252	1	Crankshaft
220	99-9035	1	Washer-Thrust
220	99-9036	1	Washer-Thrust, .005 Oversize
23	99-9024	1	Flywheel
25	99-9025	3	Piston ASM, Standard
25	99-9026	3	Piston ASM, .010 Over
26	99-9028	3	Ring Set, .010 Over
26	99-9027	3	Ring Set, Standard
29	99-9029	3	Rod-Connecting
32	99-9030	6	Screw-Rod, Connecting
44B	99-9031	6	Screw-Hex
49	99-9032	2	Screw-Hex
62	99-9033	1	Screw-Hex
718C	99-9037	1	Pin-Locating

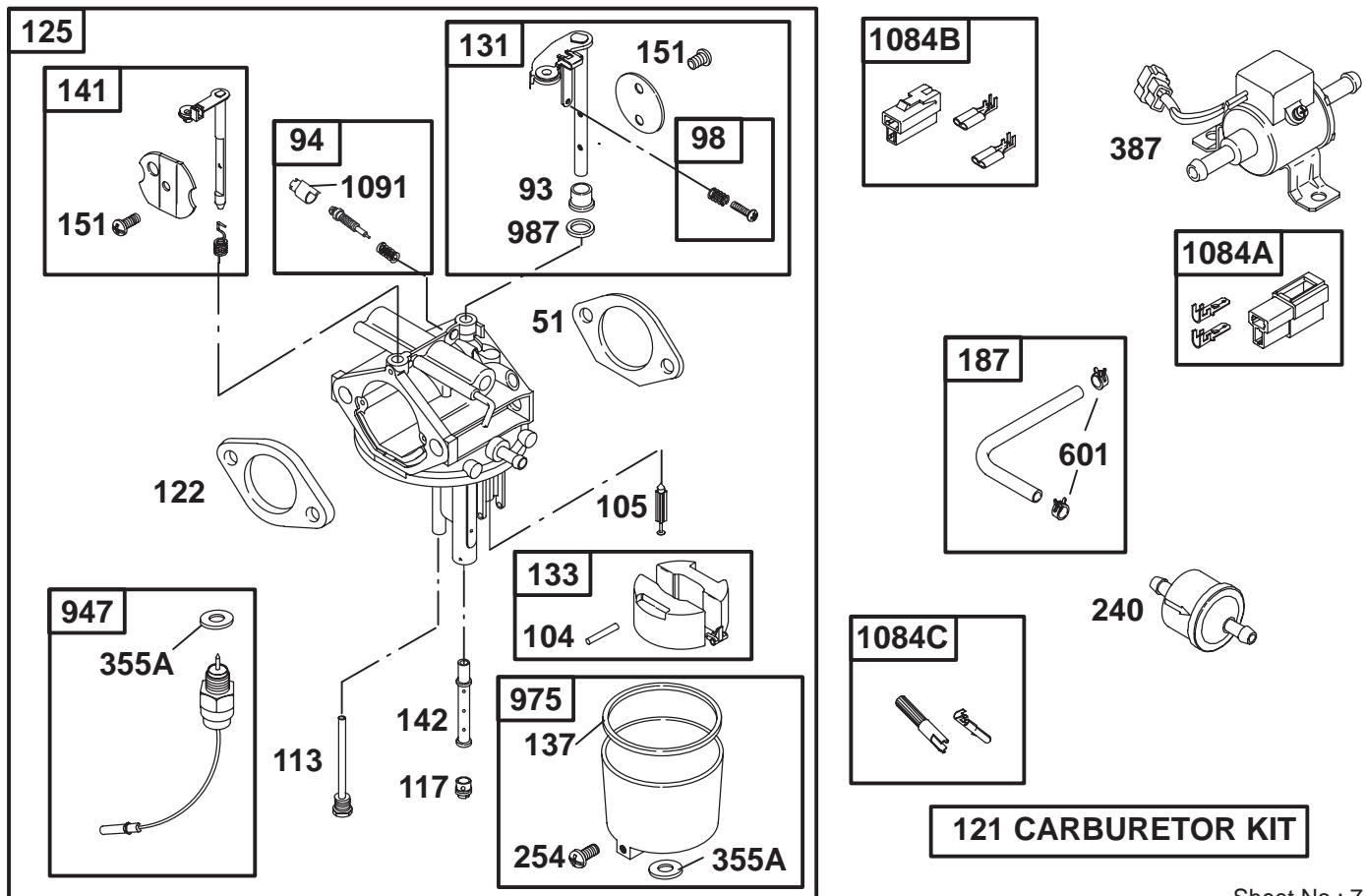
Ref. No.	Part No.	Qty.	Description
743	99-9609	1	Gear-Drive
900	99-9039	1	Shaft-Gear



Cylinder Head Assembly

Ref. No.	Part No.	Qty.	Description
1022	99-9073	1	Gasket-Cover, Rocker
1023	99-9074	1	Cover-Rocker
1036	99-9075	1	Label-Kit Emission
1077	99-9076	1	Bracket-Lifting
1077A	99-9077	1	Bracket-Lifting
1084	99-9078	1	Connector
11	99-9049	1	Tube-Breather
112A	99-9057	2	Stud-Metric
112B	99-9058	5	Stud-Metric
112C	99-9059	1	Stud-Metric
127	99-9008	2	Plug-Welch
127B	99-9060	2	Plug-Welch
13	99-9255	14	Screw-Hex
149	99-9061	3	Nut-Hex, Metric
21	99-9052	1	Cap-Fill, Oil
337	77-7330	3	Plug-Spark
355	99-9063	3	Washer-Seal
383	99-9064	1	Wrench-Spark Plug
493	99-9065	1	Bracket-Mounting
493A	99-9220	1	Bracket-Support
49A	99-9256	3	Screw-Hex
49B	99-9054	2	Screw-Hex, 8mm
49C	99-9202	4	Screw-Hex, 8mm
5	99-9253	1	Head-Cylinder
54	99-9055	2	Stud-Metric
587	99-9066	2	Clip-Wire

Ref. No.	Part No.	Qty.	Description
615	99-9067	6	Retainer
62A	99-9056	6	Screw-Hex
635	99-9068	3	Boot-Spark Plug
7	99-9254	1	Gasket-Cylinder Head
700	99-9069	3	Coil-Ignition
830	99-9101	3	Stud-Arm, Rocker
871	99-9070	6	Bushing-Guide

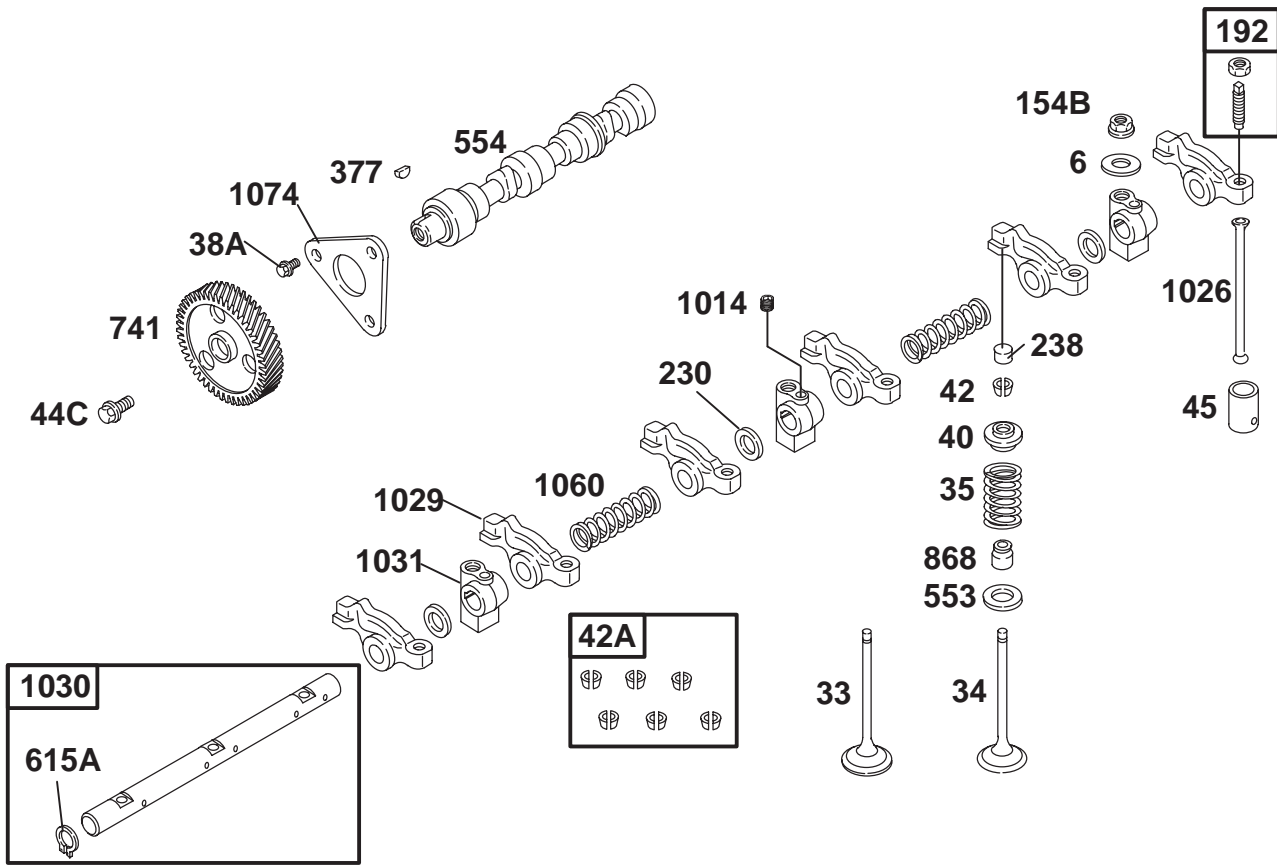


Sheet No.: 7

Carburetor Assembly

Ref. No.	Part No.	Qty.	Description
104	99-9226	1	Pin-Float Hinge
105	99-9227	1	Valve-Needle
1084A	99-9199	1	Connector
1084B	99-9213	1	Connector
1084C	99-9245	1	Connector
1091	99-9246	1	Cap-Limiter
113	99-9228	1	Tube-Jet
117	99-9230	1	Jet-Main (High Altitude)
117	99-9229	1	Jet-Main
121	99-9231	1	Carbuertor Kit
122	99-9184	1	Spacer-Carburator
125	99-9185	1	Carburetor
131	99-9232	1	Shaft-Throttle
133	99-9233	1	Float-Carburetor
137	99-9234	1	Gasket-Float Bowl
141	99-9235	1	Shaft-Choke
142	99-9236	1	Nozzle-Carburetor
151	99-9237	1	Screw-Cross/Slotted
187	99-9238	1	Line-Fuel
240	99-9193	1	Filter-Fuel
254	99-9239	1	Drain-Carb. Bowl
355A	99-9240	1	Washer-Seal
387	99-9196	1	Pump-Fuel
51	99-9182	1	Gasket-Intake
601	99-9242	1	Clamp-Hose

Ref. No.	Part No.	Qty.	Description
94	99-9224	1	Valve-Idle Adj.
947	99-9243	1	Solenoid-Fuel
975	99-9244	1	Bowl-Float
98	99-9225	1	Screw-Idle Speed

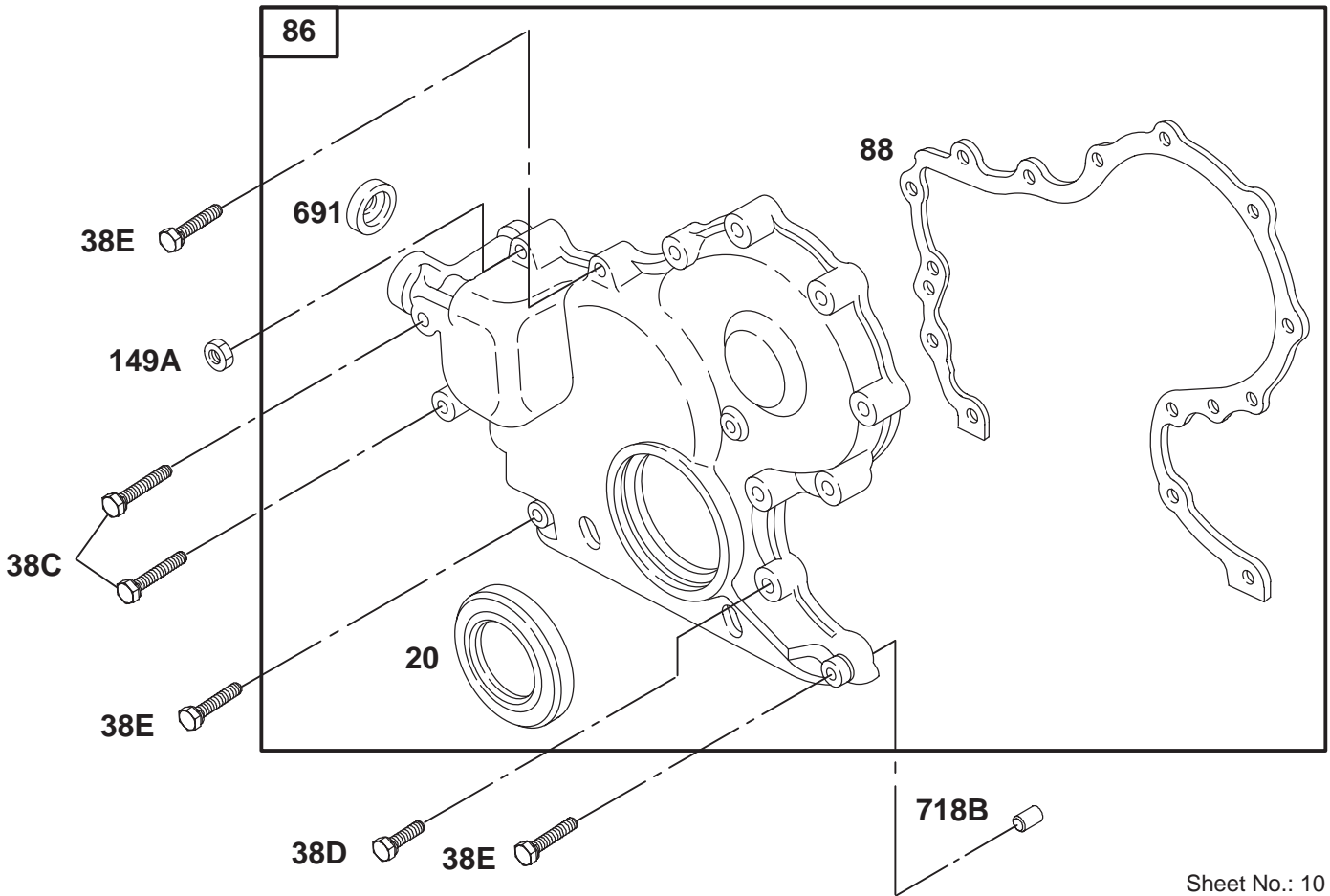


Sheet No.: 8

Rocker Arm Assembly

Ref. No.	Part No.	Qty.	Description
1014	99-9090	3	Screw-Metric
1026	99-9103	6	Rod-Push
1029	99-9104	6	Arm-Rocker
1030	99-9106	1	Shaft-Arm, Rocker
1031	99-9107	3	Support-Arm, Rocker
1060	99-9108	2	Spring-Shaft, Rocker
1074	99-9109	1	Retainer-Camshaft
154B	99-9091	3	Nut-Hex, Metric
192	99-9092	6	Adjuster-Arm, Rocker
230	99-9093	3	Washer-Spacer
238	99-9094	6	Cap-Valve
33	99-9080	3	Valve-Exhaust
34	99-9081	3	Valve-Exhaust
35	99-9082	6	Spring-Valve
377	99-9095	1	Key-Woodruff
38A	99-9083	3	Screw-Hex, 6mm
40	99-9084	6	Retainer-Valve
42	99-9086	1	Keeper-Valve
42A	99-9087	6	Keeper-Valve (Set Of Six)
44C	99-9085	1	Screw-Metric
45	99-9088	6	Tappet-Valve
553	99-9096	6	Seat-Spring, Valve
554	99-9097	1	Shaft-Cam
6	99-9079	3	Washer-Flat
615A	99-9099	2	Retainer

Ref. No.	Part No.	Qty.	Description
741	99-9641	1	Gear-Cam
868	99-9102	6	Seal-Valve

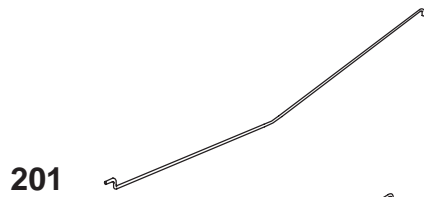


Sheet No.: 10

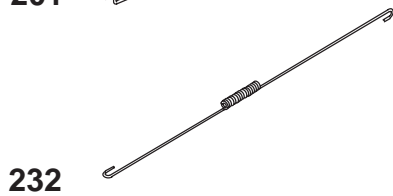
Cover Assembly

Ref. No.	Part No.	Qty.	Description
149A	99-9114	2	Nut-Hex, Metric
20	99-9126	1	Seal-Oil
38C	99-9127	2	Screw-Hex
38D	99-9128	6	Screw-Hex, 6mm
38E	99-9129	3	Screw-Hex, 6mm
691	99-9131	1	Seal-Governor Shaft
718B	99-9014	2	Pin-Locating
86	99-9130	1	Gear Cover ASM
88	99-9132	1	Gasket-Cover

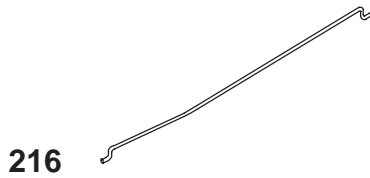
Ref. No.	Part No.	Qty.	Description



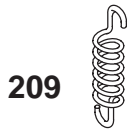
201



232

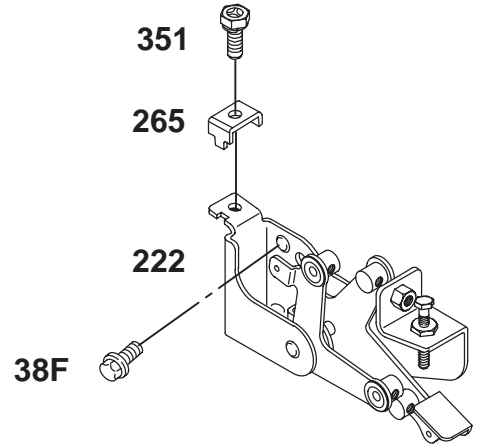
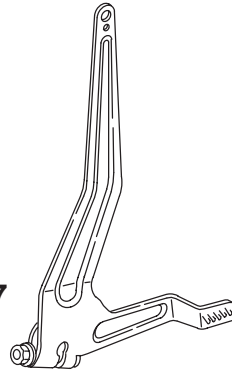


216



209

227



351

265

222

38F

Sheet No.: 13

Governor Assembly

Ref. No.	Part No.	Qty.	Description
201	99-9187	1	Link-Mech. Governor
209	99-9188	1	Spring-Governor
216	99-9189	1	Link-Choke
222	99-9190	1	Bracket-Control
227	99-9191	1	Lever-Governor
232	99-9192	1	Spring-Link
265	99-9194	1	Clamp-Casing
351	99-9195	1	Screw-Phillips, Hex
38F	99-9181	2	Screw-Hex

Ref. No.	Part No.	Qty.	Description

