



# Anti-Scalp Roller Kit

## 38 and 42 inch Mowers for TimeCutter® Z Riding Mower

Model No. 106-7020 and 106-7027

### Installation Instructions

**Note:** Determine the left and right sides of the machine from the normal operating position.

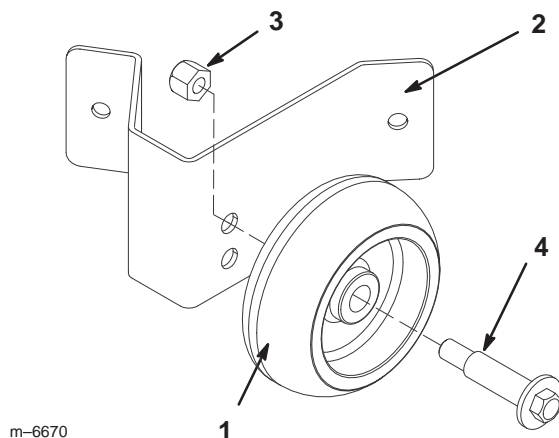
## Loose Parts

**Note:** Use the chart below to identify parts for assembly.

Description	Qty.	Use
Gage wheel bracket, front right	1	Assembling the gage wheels
Gage wheel bracket, front left	1	
Gage wheel	2	
Wheel bolt	2	
Lock nut, 3/8 inch	2	
Bolt, 5/16 x 5/8 inch	6	Installing the gage wheel bracket, 38 inch
Flange nut, 5/8 inch	6	
Bolt, 5/16 x 5/8 inch	4	Installing the gage wheel bracket, 42 inch
Flange nut, 5/8 inch	4	

## Assembling the Gage Wheels

1. Assemble the gage wheel and the bracket using the wheel bolt and lock nut, 3/8 inch (Fig. 1). Use the same hole for both brackets.
2. Repeat step one for the other bracket and wheel.



**Figure 1**

Left gage wheel assembly for 42 inch deck shown

- |                       |               |
|-----------------------|---------------|
| 1. Gage wheel         | 3. Locknut    |
| 2. Gage wheel bracket | 4. Wheel bolt |

## Adjusting the Gage Wheels

The front mower wheels are to guide the mower over uneven ground. The front wheel height can be changed to closely match the selected height of cut for the mower.

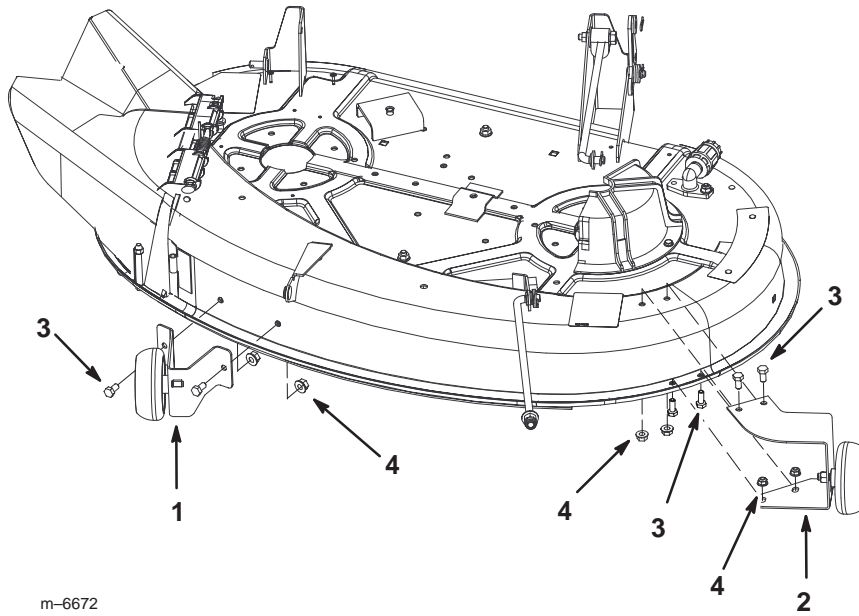
1. To change the height of the mower front wheels, remove the wheel mounting bolt and change the hole into which the wheel is mounted (Fig. 1).
2. Use the top hole for the lowest cutting height and the bottom hole for higher cutting heights (Fig. 1).

# Installing the Wheel Brackets

1. Stop the engine and remove the ignition key.
2. Raise the mower to the G position [4-1/2 inch (114 mm)]. See the mower Operator's Manual for raising the mower.
3. Mount the brackets onto the deck using the bolts, 5/16 x 5/8 inch and flange nuts, 5/16 inch (Fig. 2 and 3).

**Note:** The 38 inch deck will use four bolts for the left gage wheel bracket.

4. Lower the mower.

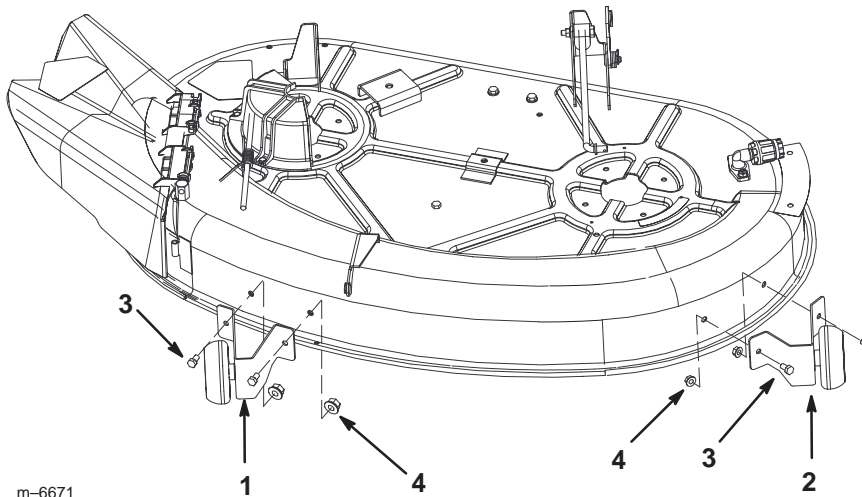


m-6672

**Figure 2**

38 inch deck shown

- |                     |                    |                          |                          |
|---------------------|--------------------|--------------------------|--------------------------|
| 1. Right gage wheel | 2. Left gage wheel | 3. Bolt, 5/16 x 5/8 inch | 4. Flange nut, 5/16 inch |
|---------------------|--------------------|--------------------------|--------------------------|



m-6671

**Figure 3**

42 inch deck shown

- |                     |                    |                          |                          |
|---------------------|--------------------|--------------------------|--------------------------|
| 1. Right gage wheel | 2. Left gage wheel | 3. Bolt, 5/16 x 5/8 inch | 4. Flange nut, 5/16 inch |
|---------------------|--------------------|--------------------------|--------------------------|