



## Boom Kit

### for Multi-Pro<sup>®</sup> 1200, 1250 and 5600

Model No. 41027—230000001 and Up

## Parts Catalog

### Ordering Replacement Parts

To order replacement parts, please supply: the part number, the quantity, and the description of each part desired.

### Understanding Reference Numbers

Each identified part in an illustration has a reference number. The reference number for a part also appears in the parts list, along with other information about the part.

This catalog uses two special reference number formats, one to indicate parts in a service assembly and another to indicate the quantity of a given part in an illustration.

### Service Assembly Reference Numbers

Parts in service assemblies have reference numbers in the form **a:b**. The **a** represents the reference number of the entire service assembly and the **b** represents a sequential number unique to each part within the service assembly.

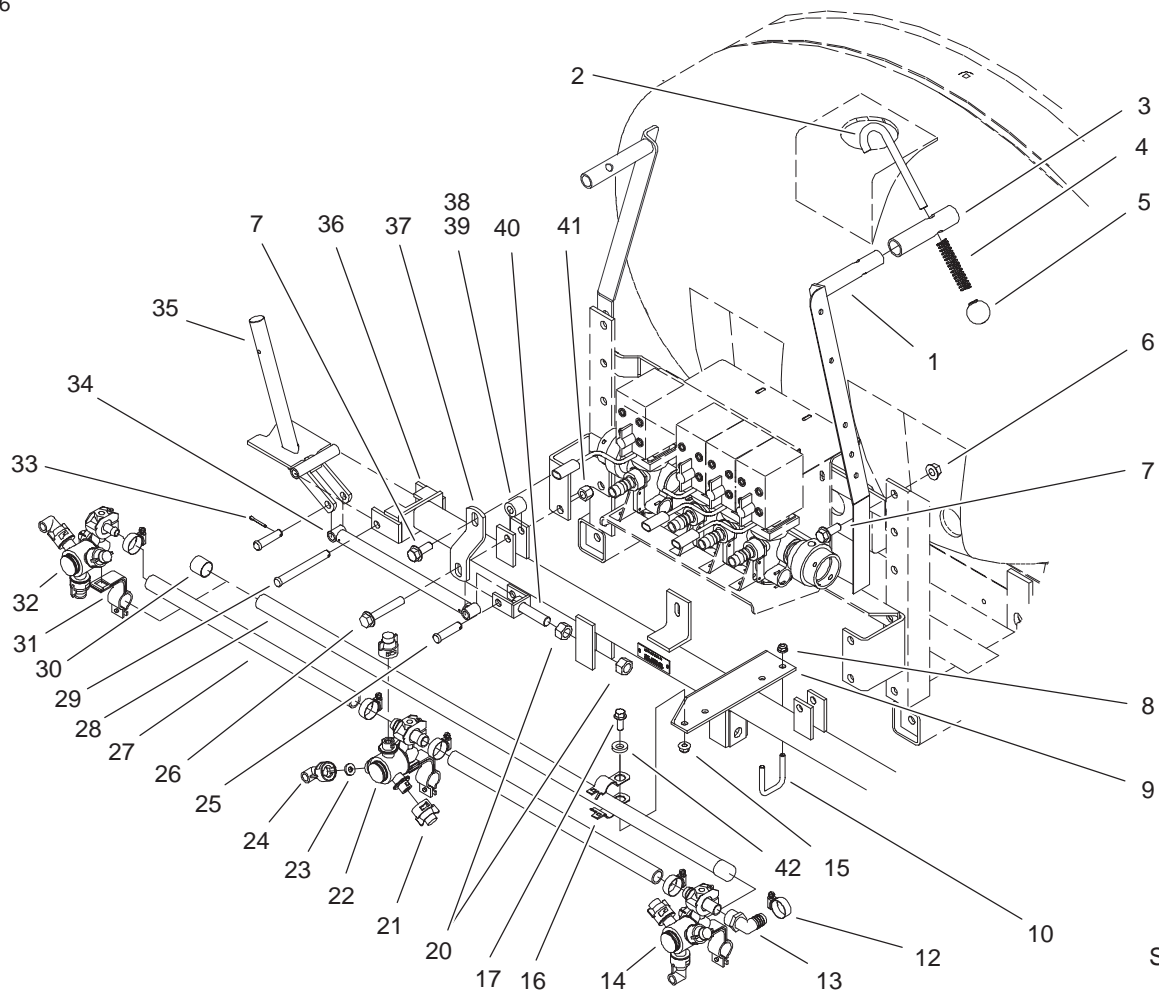
For example, a wheel assembly might be identified by reference number **6**, the tire by **6:1**, the valve by **6:2**, and the wheel by **6:3**. When you order the assembly identified by reference number **6**, you receive all parts identified by reference numbers **6:1**, **6:2**, and **6:3**. However, you may also order any part individually.

Reference numbers of this type appear in illustrations and in part lists.

### Reference Numbers Indicating Quantity

In an illustration, if a reference number indicates more than one part, the reference number has the form **nX y**. The **n** represents the quantity of the part, the **X** is the multiplication symbol, and the **y** represents the reference number.

For example, in an illustration, the reference number **2X 37** means that two of the parts identified by reference number **37** are indicated.

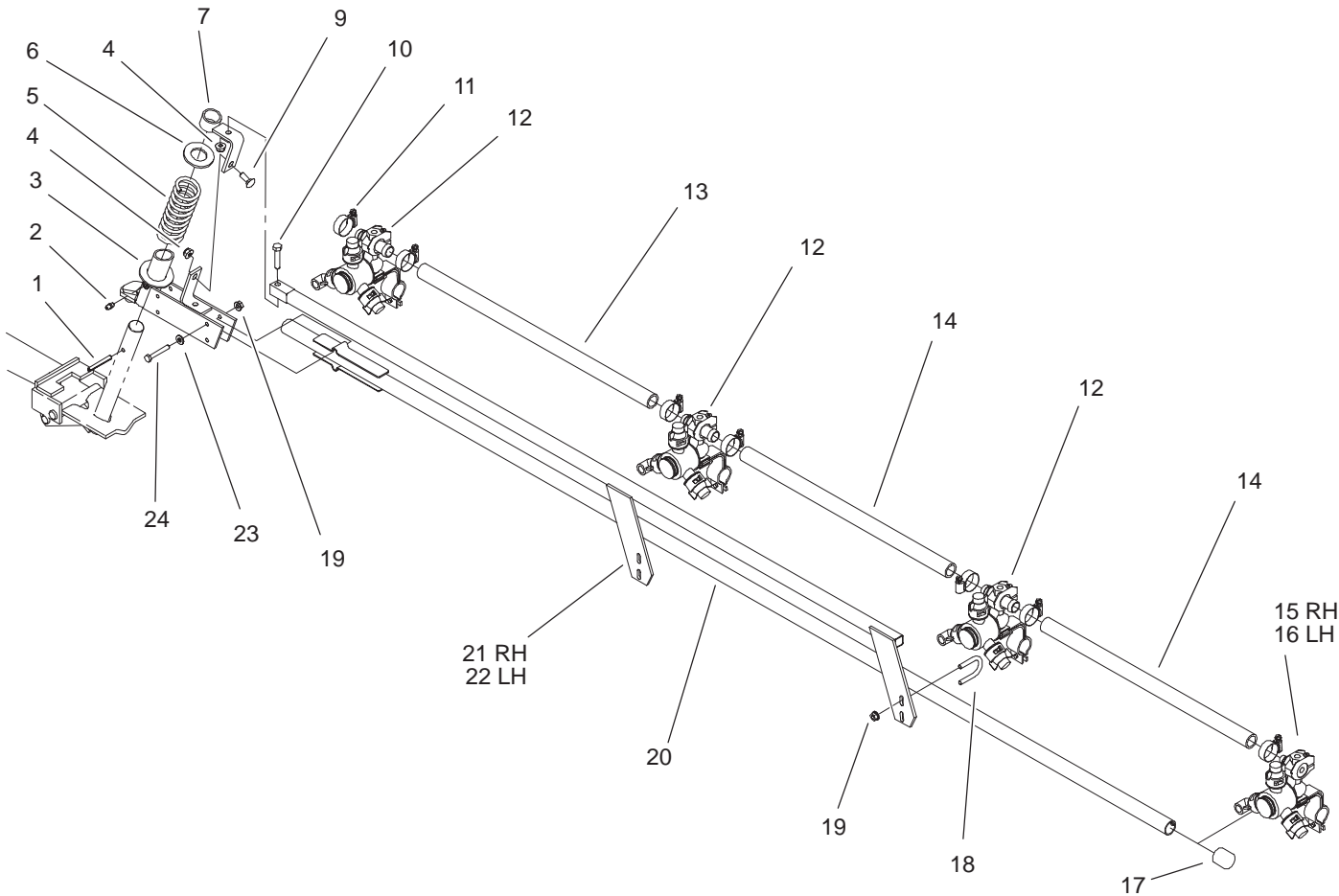


Sheet No.:2

## Main Frame Tube Assembly

Ref. No.	Part No.	Qty.	Description
1	106-5082-03	2	Hold-Boom
2	92-8562	2	Hook-Boom Restraint
3	92-8561	2	Hose-Hold In
4	92-8563	2	Spring
5	92-8564	2	Knob
6	32128-23	4	Nut-HF
7	3234-32	6	Screw-HHF
8	104-8300	4	Nut-Flange, NI
9	106-5085-03	2	Plate-Center Boom
10	301950	2	U-Bolt-Square
12	2412-129	5	Clamp-Hose
13	95-9314	1	Elbow
14	104-8790	1	Body-Turret, Double (W/Thread)
15	104-8301	2	Nut-Flange, NI
16	40494	2	Clamp ASM
17	3234-11	2	Screw-HHF
20	3217-11	4	Nut-Hex
21	95-9187	22	Cap-Blank
22	104-8789	1	Body-Turret, Double
23	40998	11	Seat-Gasket
24	95-9186	11	Cap
25	42195	4	Pin-Clevis
26	3234-40	2	Screw-HF
27	40506	2	Hose-Jumper
28	40493-03	1	Pipe-Boom, Center

Ref. No.	Part No.	Qty.	Description
29	283-83	2	Pin-Clevis
30	92-8420	2	Cap-Boom
31	95-9185	11	Clamp
32	104-8787	1	Body-Turret, Single (LH)
33	3272-11	6	Pin-Cotter
34	42240-03	2	Strut ASM
35	42243-03	2	Hinge ASM
36	42227-03	1	Main Frame Tube ASM
37	104-8761-03	2	Strap-Support, Boom
38	42257	2	Spacer-Tubular, 1"
39	42258	2	Spacer-Tubular, 1-1/4"
40	42237	2	Adjustable Clevis ASM
41	3296-23	4	Nut-Lock, NI
42	3256-4	2	Washer



Sheet No.:3

# Boom Assembly

Ref. No.	Part No.	Qty.	Description
1	32121-78	2	Pin-Roll
2	302-5	2	Fitting-Grease
3	42706-03	2	Breakaway Pivot ASM
4	104-8300	4	Nut-Flange, NI
5	42196-03	2	Spring
6	3256-62	2	Washer-Flat
7	42707-03	2	Support Bracket ASM
9	3230-16	2	Screw-CARR
10	322-7	2	Screw-HH
11	2412-129	14	Clamp-Hose
12	104-8789	6	Body-Turret, Double
13	95-2229	2	Hose
14	40506	4	Hose-Jumper
15	104-8788	1	Body-Turret, Single (RH)
16	104-8787	1	Body-Turret, Single (LH)
17	92-8420	2	Cap-Boom
18	92-0010	4	U-Bolt
19	32128-32	16	Nut-HHF
20	106-5076-03	2	Boom Extension ASM
21	42710-03	1	RH Boom Support ASM
22	42711-03	1	LH Boom Support ASM

Ref. No.	Part No.	Qty.	Description
23	3256-22	8	Washer-Flat
24	321-10	8	Screw-HH

