



# Electric Hose Reel Kit

Serial Number 315000000 and After Multi Pro® 1750 Turf Sprayer

Model No. 41159—Serial No. 415200000 and Up

## Installation Instructions

## Introduction

The Electric Hose Reel Kit is a dedicated attachment for a turf spray application vehicle and is intended to be used by professional, hired operators in commercial applications. It is primarily designed for spraying on well-maintained lawns in parks, golf courses, sports fields, and on commercial grounds.

Read this information carefully to learn how to operate and maintain your product properly and to avoid injury and product damage. You are responsible for operating the product properly and safely.

Visit [www.Toro.com](http://www.Toro.com) for more information, including safety tips, training materials, accessory information, help finding a dealer, or to register your product.

Whenever you need service, genuine Toro parts, or additional information, contact an Authorized Service Dealer or Toro Customer Service and have the model and serial numbers of your product ready. **Figure 1** identifies the location of the model and serial numbers on the product. Write the numbers in the space provided.

**Important:** With your mobile device, you can scan the QR code on the serial number decal (if equipped) to access warranty, parts, and other product information.

Model No. \_\_\_\_\_

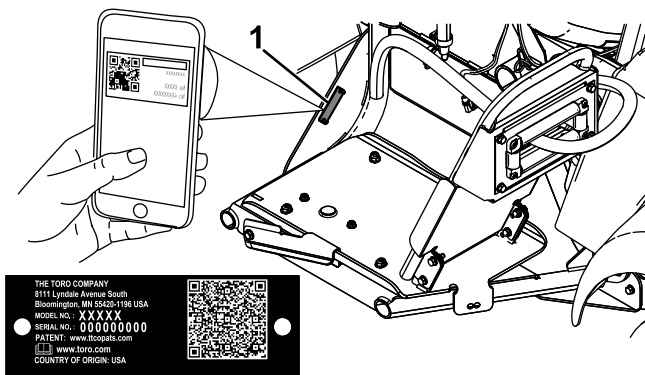
Serial No. \_\_\_\_\_

**Note:** This product complies with all relevant European directives. For details, please see the Declaration of Incorporation (DOI) at the back of this publication.

Determine the left and right sides of the machine from the normal operating position.

**Important:** Teflon tape is required for the installation of this kit. The tape is used to wrap threads of fittings before assembly. Threads should be wrapped starting at the base and traveling to the tip of fitting to ensure a waterproof seal.

**Important:** A non-petroleum based lubricant, such as vegetable oil, will be required for the installation of this kit.




g328087

**Figure 1**

1. Model and serial number location



# Safety

Improper use or maintenance by the operator or owner can result in injury. To reduce the potential for injury, comply with these safety instructions and always pay attention to the safety-alert symbol , which means **Caution, Warning, or Danger**—personal safety instruction. Failure to comply with the instruction may result in personal injury or death.

Read also the safety and operation instructions in the vehicle *Operator's Manual*.

- Do not aim the hand sprayer at people or animals. Fluids under high pressure can penetrate skin and cause severe injury, possibly resulting in amputation or death. Hot liquids and chemicals can also cause burns or injury. If any part of the body comes in contact with the spray stream, immediately consult a physician familiar with injected fluid injuries.
- Do not place your hand or any other part of your body in front of the spray nozzle.
- Do not leave the equipment under pressure when you are not present.
- Do not use the hand sprayer if the hose, trigger lock, nozzle, or any other part is damaged or missing.
- Do not use the hand sprayer if there are any leaks in any hoses, fittings, or other components.
- Do not spray near power lines.
- Do not drive while spraying with a hand sprayer.
- Wear a chemical suit, goggles, respirator, rubber shoes, and protective gloves when spraying chemicals with the hand sprayer.
- Operate the machine only in good visibility and appropriate weather conditions. Do not operate the machine when there is a risk of lightning.

## **CAUTION**

**Chemicals are hazardous and can cause personal injury.**

- **Read the directions on the chemical labels before handling the chemicals and follow all manufacturer recommendations and precautions.**
- **Keep chemicals away from your skin. Should contact occur, wash the affected area thoroughly with soap and clean water.**
- **Wear goggles and any other protective equipment recommended by the chemical manufacturer.**

# Installation

## Loose Parts

Use the chart below to verify that all parts have been shipped.

Procedure	Description	Qty.	Use
<b>1</b>	No parts required	–	Prepare the machine.
<b>2</b>	Wire harness Switch Weatherproof cap and nut Small R-clamp Flange nut (3/8) Carriage bolt Fusible link wire harness (108-9455) Relay (99-7435) Push-in fastener	1 1 1 1 1 1 1 1 1	Install the wire harness.
<b>3</b>	Hose-reel frame Bolt (5/16) Flange nut (5/16 inch) Swivel plate Hose reel Large carriage bolt Flange nut (3/8 inch) Handle Mud shield Spring clip Locknut Small carriage bolt Large R-clamp Spray gun bracket Spacer Self-tapping screws Thrust washer Snap ring	1 10 10 1 1 4 4 1 1 1 2 2 2 1 2 2 1 1 1	Mount the hose reel.
<b>4</b>	No parts required	–	Remove the actuator and valve cluster.

Procedure	Description	Qty.	Use
<b>5</b>	Flanged control valve	1	Install the control valve.
	Wing handle	2	
	Handle screw (6-32 x 5/8 inch)	2	
	Valve mount	2	
	90° elbow	1	
	Flange clamp	1	
	Gasket	1	
	Fitting cap (1/2 inch)	2	
	Straight fitting	1	
	Retainer	3	
	Straight control valve	2	
	Control-valve bracket (serial number 415399999 and before)	1	
	Flange-head bolt (1/4 x 5/8 inch)	2	
	Locknut (1/4 inch)		
	Control-valve bracket (serial number 415400000 and after)	1	
	Control-valve bracket (serial number 415400000 and after with GeoLink)	1	
	T-manifold	1	
	Carriage bolt (1/4 x 5/8 inch)	2	
	Bolt (M6 x 12 mm)	8	
	Hose-reel supply hose	1	
	Hose clamp	1	
<b>6</b>	Long hose with fitting	1	Connect the spray hose.
	Spray gun	1	
	Plastic hose clamp	1	

# 1

## Preparing the Machine

### No Parts Required

### Procedure

1. Empty the sprayer tank.
2. Clean and rinse the sprayer tank; refer to the *Operator's Manual* for your machine.
3. Park the machine on a level surface, engage the parking brake, shut off the pump, shut off the engine, remove the key, and wait for all moving parts to stop.
4. Disconnect the negative battery cable.
5. Disconnect the positive battery cable.

# 2

## Installing the Wire Harness

### Parts needed for this procedure:

1	Wire harness
1	Switch
1	Weatherproof cap and nut
1	Small R-clamp
1	Flange nut (3/8)
1	Carriage bolt
1	Fusible link wire harness (108-9455)
1	Relay (99-7435)
1	Push-in fastener

### Installing the Small R-Clamp

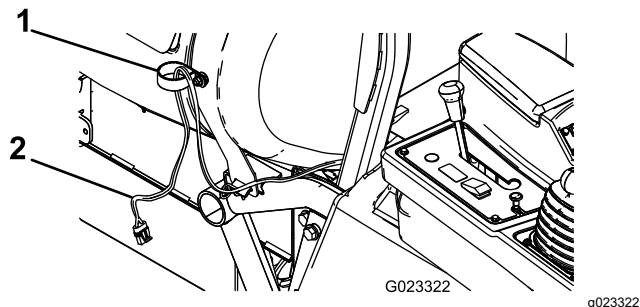
1. Remove the fasteners securing the front tank straps at the top of the tank.

**Note:** Retain all parts.

2. Install a carriage bolt to the lower inboard hole on the right tank strap.
3. Install the tank strap fasteners removed previously to secure the straps to the tank.

**Note:** Make sure the strap is secure to the tank. Do not overtighten it.

4. Secure a small R-clamp to the carriage bolt using a flange nut (3/8 inch) as shown in [Figure 2](#).
5. Route the hose reel end of the wire harness through the R-clamp as shown in [Figure 2](#).



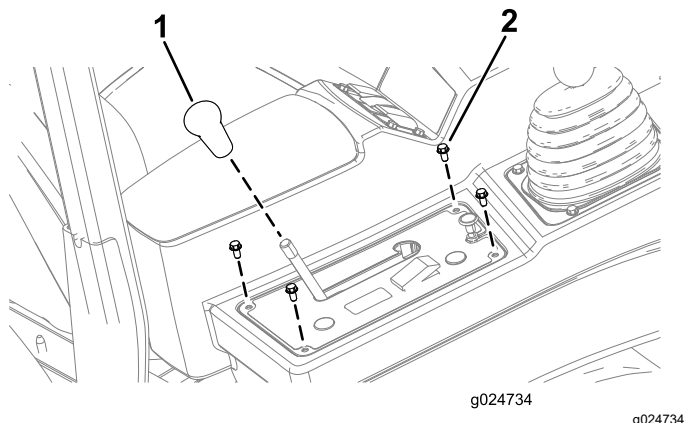
**Figure 2**

1. R-clamp (small)
2. Wire harness

### Installing the Switch

1. Remove the 4 hex-head screws that secure the control-panel cover to the console, and lift the panel slightly.

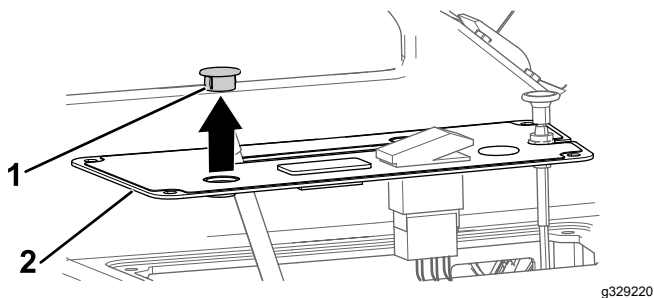
**Note:** If needed, remove the knob from the differential-lock rod.



**Figure 3**

1. Knob
2. Hex-head screw (1/4 x 1/2 inch)

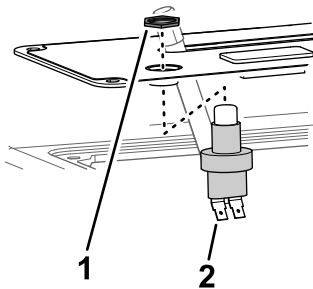
2. Remove the round plug from the control-panel cover ([Figure 4](#)).



**Figure 4**

1. Panel plug (round)
2. Control-panel cover

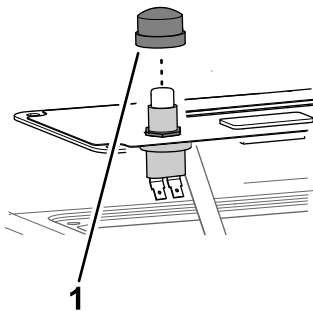
3. Assemble the switch to the control-panel cover with the jam nut, and tighten the jam nut by hand (Figure 5).



**Figure 5**

1. Jam-nut (switch)
2. Switch

4. Install the button cover onto the switch (Figure 6).



**Figure 6**

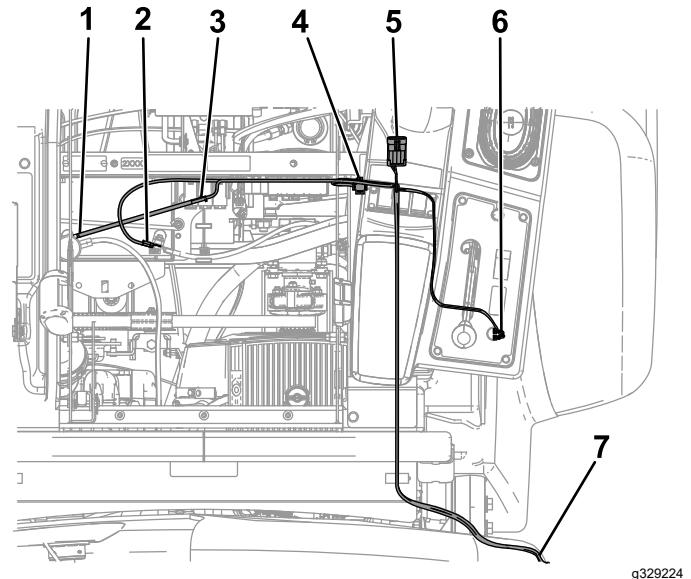
1. Button cover

## Connecting the Wire Harness

1. Connect the 2 connectors on the wire harness to the 2-blade connector on the switch (Figure 7).
2. Secure the control-panel cover to the console arm using the previously removed bolts.

**Note:** Install the knob on the differential-lock rod if you previously removed it.

3. Connect the nearby connector into the hose reel plug on the main wire harness, located under the front portion of the control arm.
4. Plug the next connector into the relay (Figure 7), and mount the relay to the outer hole on the frame near the existing relays.
5. Connect the fusable link to the red wire attached to the positive (+) battery terminal (Figure 7).
6. Connect the negative (-) connection on the wire harness to the negative (-) battery terminal.
7. Connect the far end of the wire harness to the fuse block ground (Figure 7).



**Figure 7**

1. To positive (+) battery terminal
2. To negative (-) battery terminal
3. Fusable link
4. To relay
5. To main wire harness plug terminal
6. To switch
7. To fuse block ground

# 3

## Mounting the Hose Reel

### Parts needed for this procedure:

1	Hose-reel frame
10	Bolt (5/16)
10	Flange nut (5/16 inch)
1	Swivel plate
1	Hose reel
4	Large carriage bolt
4	Flange nut (3/8 inch)
1	Handle
1	Mud shield
1	Spring clip
2	Locknut
2	Small carriage bolt
2	Large R-clamp
1	Spray gun bracket
2	Spacer
2	Self-tapping screws
1	Thrust washer
1	Snap ring

### Procedure

1. Mount the hose-reel frame to the side of the machine using 4 bolts (5/16 inch) and 4 flange nuts (5/16 inch) as shown in [Figure 8](#).

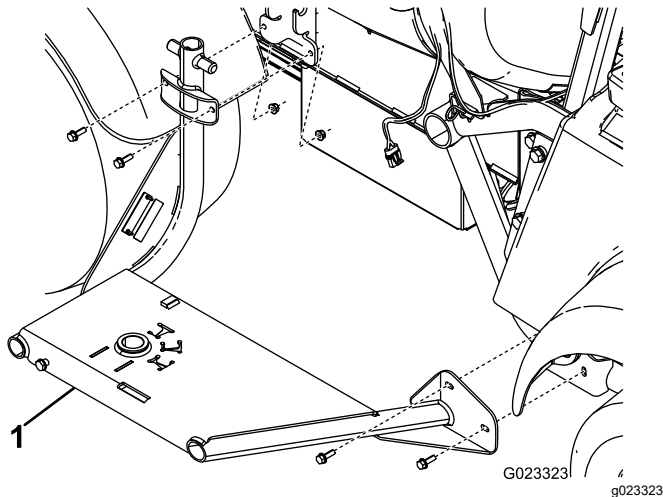


Figure 8

1. Hose-reel frame

2. Attach the swivel plate to the bottom of the hose reel using 4 carriage bolts and 4 flange nuts (3/8 inch) ([Figure 9](#)).

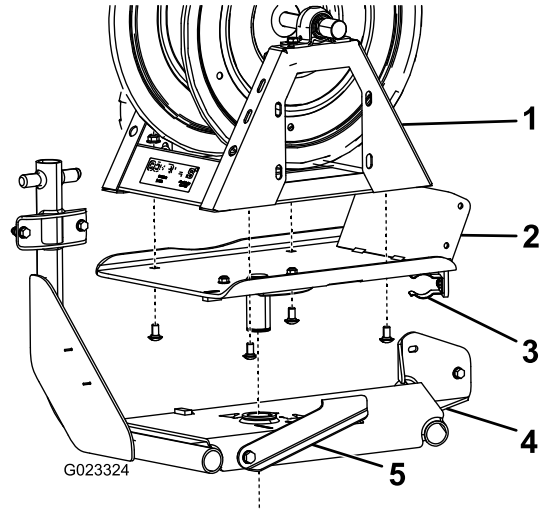


Figure 9

1. Hose reel
2. Swivel plate
3. Spring clip
4. Hose reel frame
5. Swivel lock

3. Drop the swivel plate into the hole on the hose-reel frame ([Figure 9](#)).

**Note:** Move the swivel lock to the left for ease of installation.

4. On the underside of the hose reel frame, attach the thrust washer and snap ring to the post on the swivel plate ([Figure 10](#)).

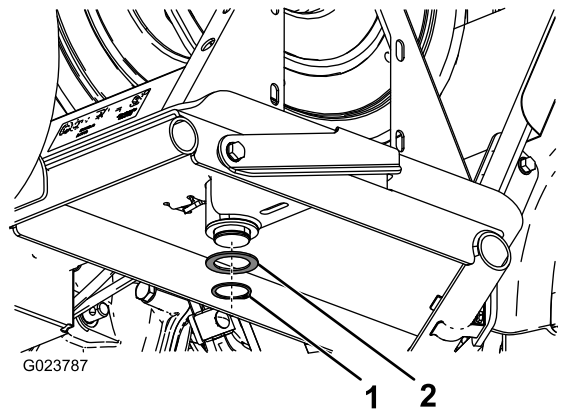
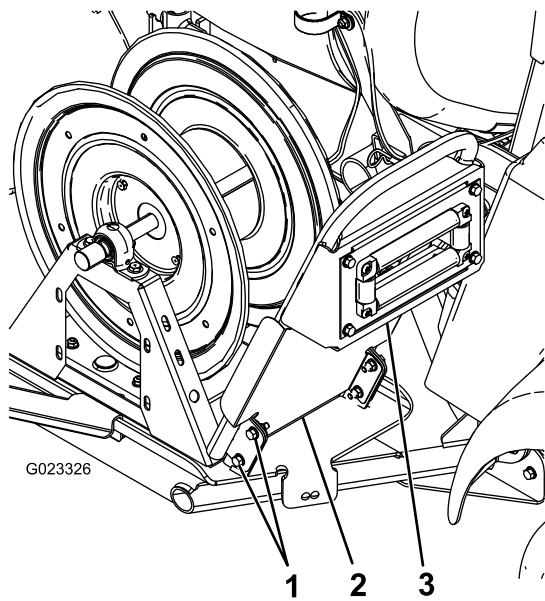


Figure 10

1. Snap ring
2. Thrust washer

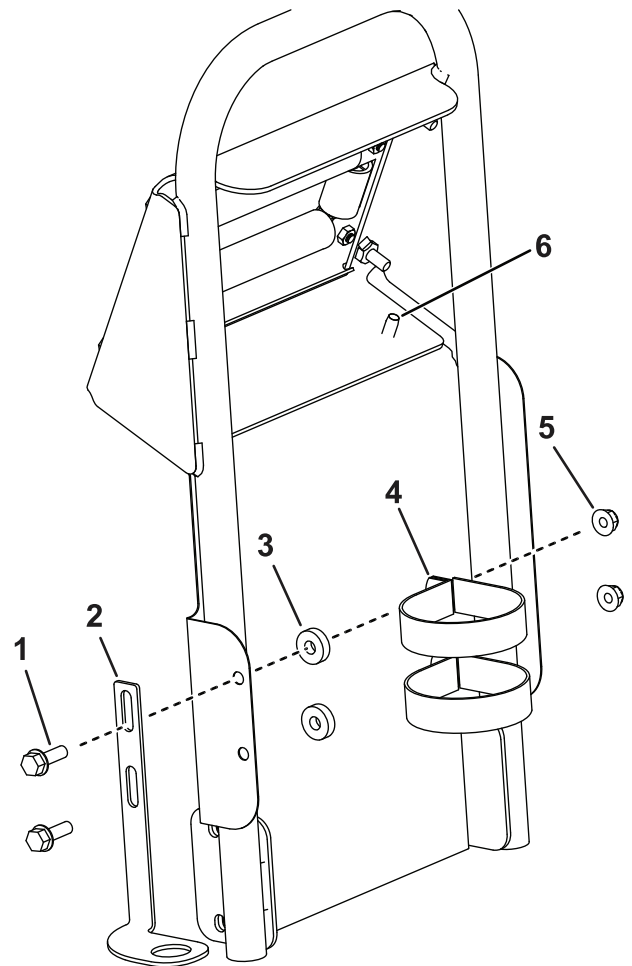
5. Loosely mount the handle to the swivel plate with 4 bolts (5/16 inch) ([Figure 11](#)).



**Figure 11**

1. Bolts (5/16)
2. Mud shield
3. Handle

6. Attach the mud shield and handle to the swivel plate using the bolts installed in step 5 and 4 flange nuts (5/16 inch) (Figure 11).
7. Secure the top of the mud shield to the handle using 2 self-tapping screws (Figure 12).



**Figure 12**

1. Bolt (5/16 inch)
2. Spray gun bracket
3. Spacer
4. R-clamp (large)
5. Flange nut (5/16 inch)
6. Self-tapping screw

8. Attach the spray gun holder to the mud shield as shown in Figure 12.
9. Connect the wire harness to the hose reel.



# 4

## Removing the Actuator and Valve Cluster

No Parts Required

### Procedure

**Note:** Retain all removed parts for later installation unless otherwise noted.

1. Remove the retainer that secures the actuator to the manifold valve for the section valve or agitation valve (Figure 13).

**Note:** Squeeze the 2 legs of the retainer together while pushing it down.

**Note:** Retain the actuator and retainer.

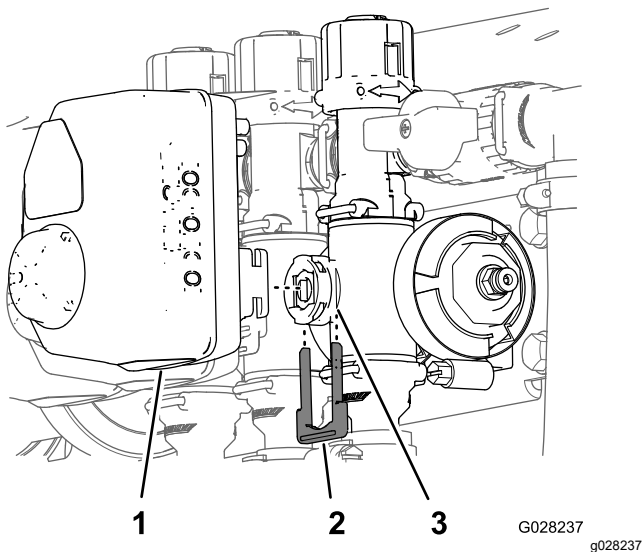


Figure 13

- |             |              |
|-------------|--------------|
| 1. Actuator | 3. Stem port |
| 2. Retainer |              |

2. Remove the actuator from the manifold valve.

3. Remove the retainers holding the boom bypass valve cluster assembly, end cap, and the fitting and hose assembly as shown in Figure 14.

**Important:** If your machine has GeoLink installed, do this for the valve clusters on both sides.

**Note:** You will not use the male cap, but keep the O-ring that is on the cap.

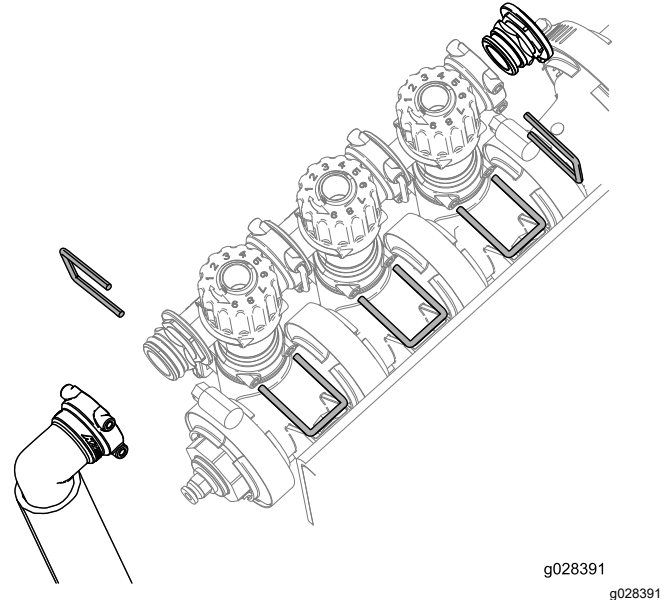


Figure 14

4. Note and record the current left and right knob settings.

**Important:** If your machine has GeoLink installed, record all of the knob settings.

5. Rotate the boom bypass valve cluster 180° as shown in Figure 15.

# 5

## Installing the Control Valve

### Parts needed for this procedure:

1	Flanged control valve
2	Wing handle
2	Handle screw (6-32 x 5/8 inch)
2	Valve mount
1	90° elbow
1	Flange clamp
1	Gasket
2	Fitting cap (1/2 inch)
1	Straight fitting
3	Retainer
2	Straight control valve
1	Control-valve bracket (serial number 415399999 and before)
2	Flange-head bolt (1/4 x 5/8 inch)
	Locknut (1/4 inch)
1	Control-valve bracket (serial number 415400000 and after)
1	Control-valve bracket (serial number 415400000 and after with GeoLink)
1	T-manifold
2	Carriage bolt (1/4 x 5/8 inch)
8	Bolt (M6 x 12 mm)
1	Hose-reel supply hose
1	Hose clamp

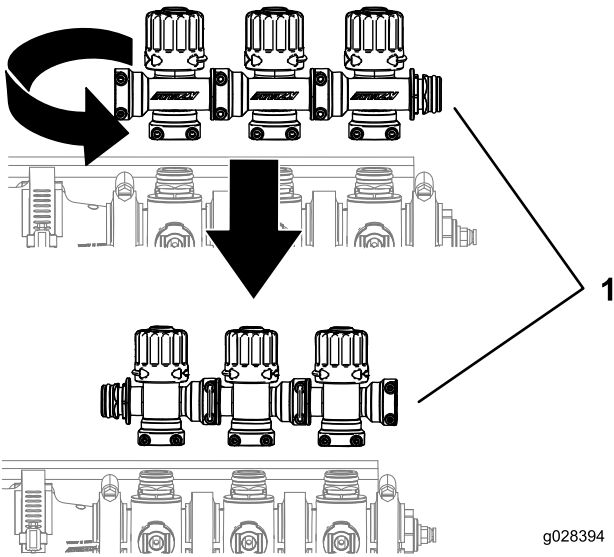


Figure 15

1. Boom valve cluster

6. Adjust the left and right knobs to the previous settings.

**Important:** If your machine has GeoLink installed, adjust all of the knobs to their previous settings.

7. Install the boom valve cluster using the retainers previously removed as shown in Figure 16.

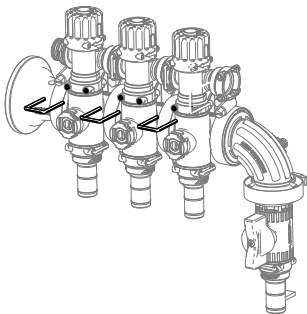


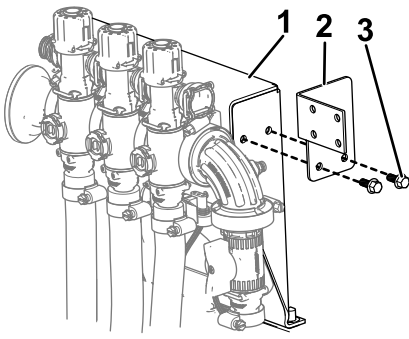
Figure 16

## Installing the Control Valve to the Machine

**Multi Pro 1750 Turf Sprayers—Serial number 415399999 and Before**

**Note:** Retain all removed parts for later installation unless otherwise noted.

1. Install the control-valve bracket onto the valve-mount frame using 2 flange-head bolts (1/4 x 5/8 inch) as shown in Figure 17.

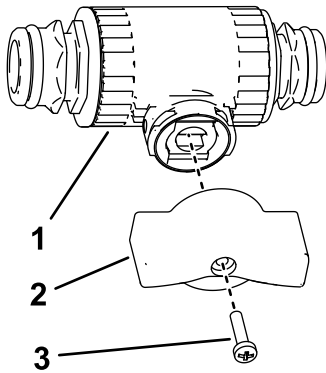


**Figure 17**

g329236

1. Valve-mount frame
2. Valve-mount bracket
3. Flange-head bolt (1/4 x 5/8 inch)

2. Assemble the red wing handle to the control valve as shown in [Figure 18](#).

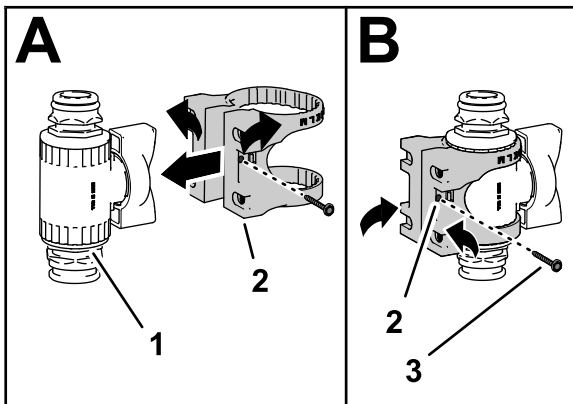


**Figure 18**

g493416

1. Control valve
2. Wing handle (red)
3. Handle screw (6-32 x 5/8 inch)

3. Assemble the valve mount onto the control valve as shown in A of [Figure 19](#).

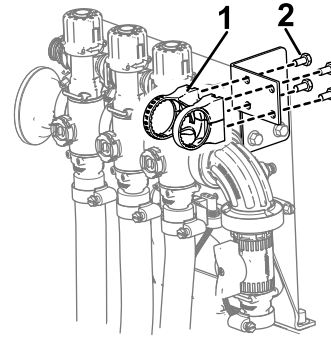


**Figure 19**

g493417

1. Control-valve assembly
2. Valve mount
3. Flange-head screw (#6)

4. Secure the valve mount to the control valve with the flange-head screw (#6), and tighten the screw by hand (B of [Figure 19](#)).
5. Install the control valve assembly onto the control-valve bracket using 4 bolts (M6) as shown in [Figure 20](#).

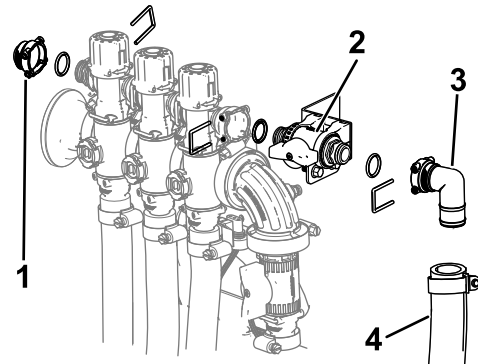


**Figure 20**

g329237

1. Valve mount (control valve assembly)
2. Bolt (M6)

6. Secure the control valve assembly to the boom valve with the previously removed O-ring and retainer ([Figure 21](#)).
7. Install the cap (1/2 inch), O-rings, fitting, and hose assembly onto the control valve using the retainers previously removed as shown in [Figure 21](#).

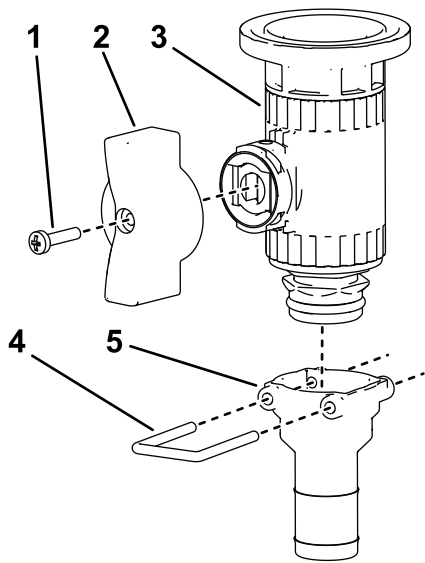


**Figure 21**

g329239

1. Cap (1/2 inch)
2. Control valve installed in valve mount
3. Fitting
4. Hose assembly

8. Install the actuators removed in [Figure 13](#) to the manifold valve using the previously-removed retainers.
9. Remove the pressure-sense hose from the coupler.
10. Assemble the green wing handle and straight fitting to the flanged control valve using the retainer as shown in [Figure 22](#).

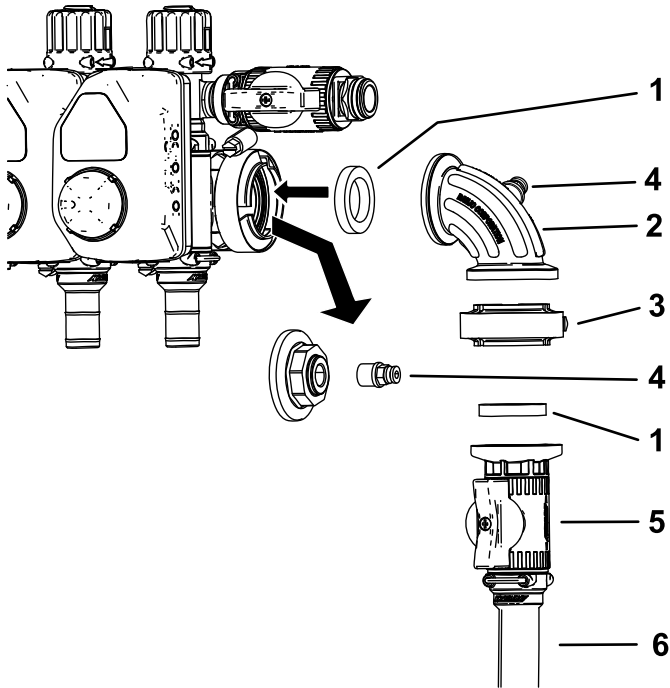


**Figure 22**

g490830

- |                                   |                     |
|-----------------------------------|---------------------|
| 1. Handle screw (6-32 x 5/8 inch) | 4. Retainer         |
| 2. Wing handle (green)            | 5. Straight fitting |
| 3. Control valve                  |                     |

11. Disconnect the cap and coupler from the pressure-gauge port ([Figure 23](#)).



**Figure 23**

g329241

- |                 |                          |
|-----------------|--------------------------|
| 1. Gasket       | 4. Coupler               |
| 2. 90° fitting  | 5. Control valve         |
| 3. Gasket clamp | 6. Hose-reel supply hose |

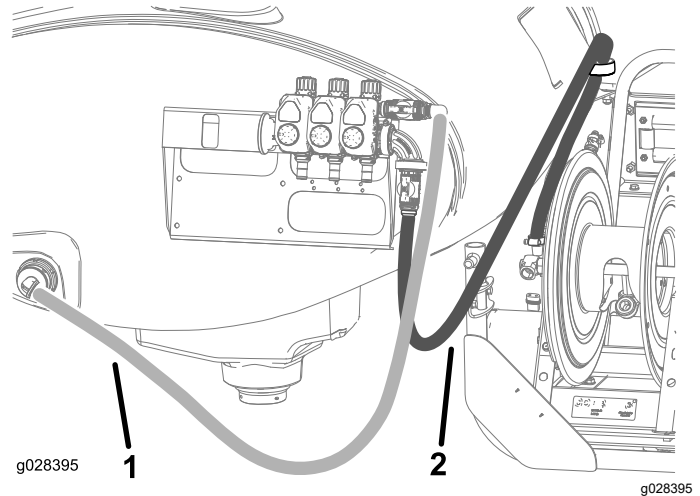
12. Install the control valve assembly vertically as shown in [Figure 23](#).

13. Install the coupler into the open port on the 90° fitting ([Figure 23](#)).

**Note:** The cap can be discarded.

14. Connect the pressure-sense hose to the coupler.
15. Connect the tank-supply hose to the horizontal control valve using a hose clamp.
16. Secure the open end of the hose-reel supply hose to the straight fitting with a hose clamp.
17. Route the hose-reel supply hose as shown in [Figure 24](#) and attach it to the hose reel with a hose clamp.

**Note:** If the Tank Cleanse Rinse Kit is installed, route the hose behind the rinse pump.



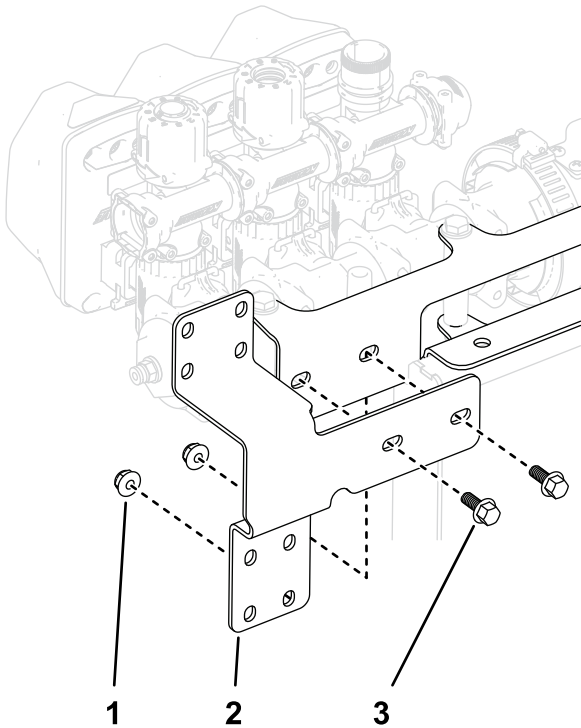
**Figure 24**

- |                     |                          |
|---------------------|--------------------------|
| 1. Tank-supply hose | 2. Hose-reel supply hose |
|---------------------|--------------------------|

# Installing the Control Valve to the Machine

## Multi Pro 1750 Turf Sprayers without GeoLink—Serial number 415400000 and After

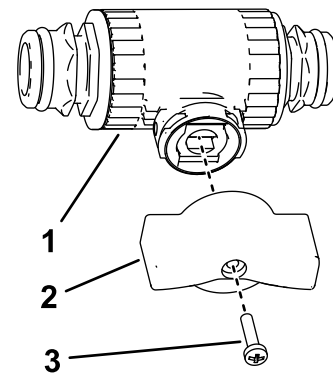
1. Install the actuators removed in [Figure 13](#) to the manifold valve using the previously-removed retainers.
2. Install the control valve bracket onto the valve-mount frame using 2 flange-head bolts (1/4 x 5/8 inch) and locknuts (1/4 inch) as shown in [Figure 25](#).



**Figure 25**

1. Locknut (1/4 inch)
2. Valve-mount frame
3. Flange-head bolt (1/4 x 5/8 inch)

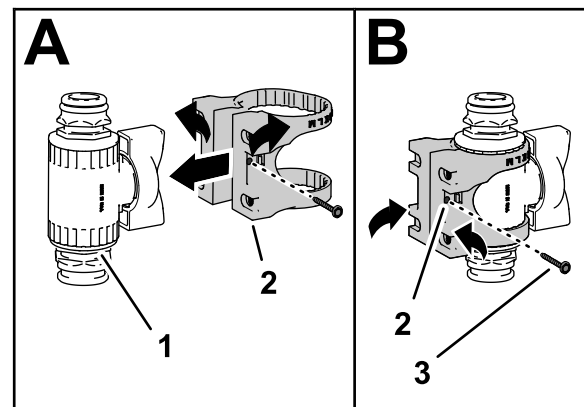
3. Assemble the red wing handle to a straight control valve.



**Figure 26**

1. Control valve
2. Wing handle (red)
3. Handle screw (6-32 x 5/8 inch)

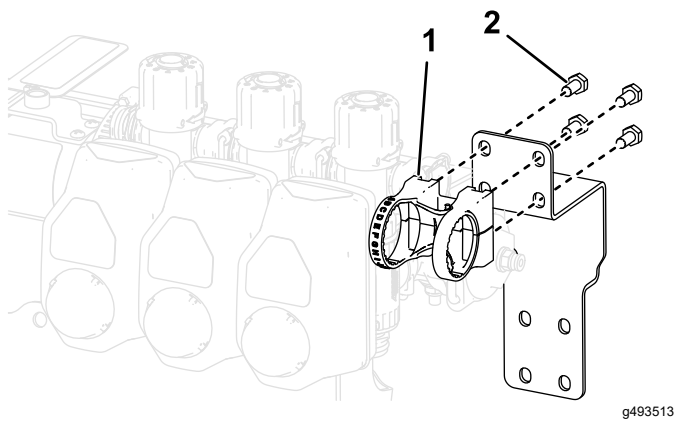
4. Assemble the valve mount onto a straight control valve as shown in A of [Figure 27](#).
5. Secure the valve mount to the control valve with the flange-head screw (#6), and tighten the screw by hand (B of [Figure 27](#)).



**Figure 27**

1. Control valve
2. Valve mount
3. Flange-head screw (#6)

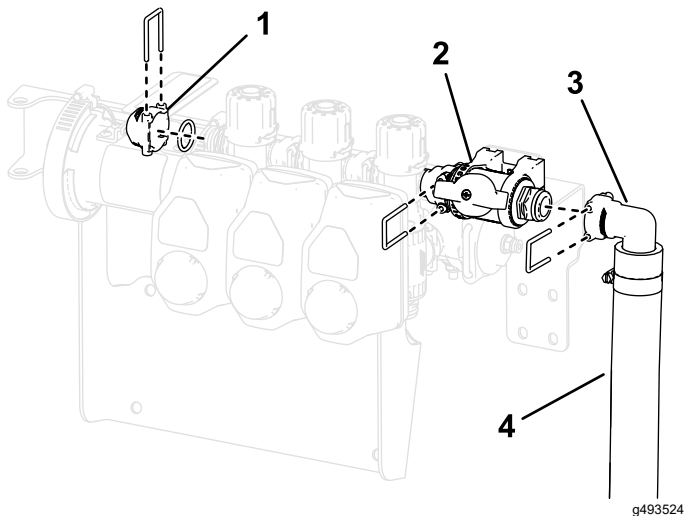
6. Install the control valve assembly onto the top of the control valve bracket using 4 screws (M6) as shown in [Figure 28](#).



**Figure 28**

1. Valve mount (control valve assembly)
2. Screw (M6)

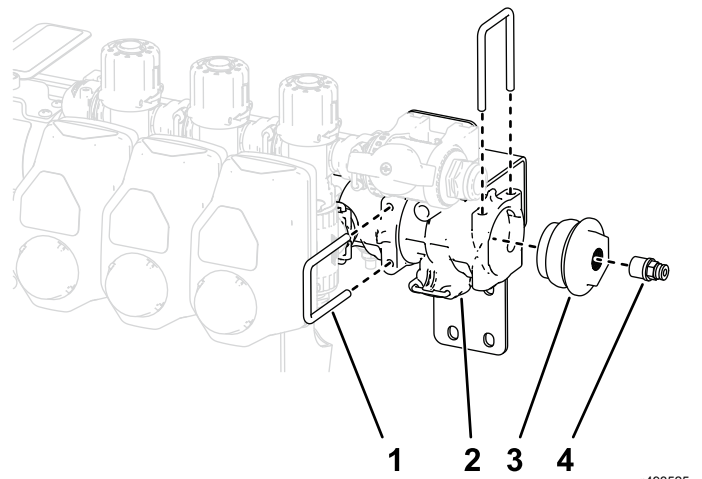
7. Secure the control valve assembly to the boom valve with the previously removed O-ring and retainer as shown in [Figure 29](#).
8. Install the cap (1/2 inch), O-rings, fitting, and hose assembly onto the control valve using the retainers previously removed as shown in [Figure 29](#).



**Figure 29**

1. Cap (1/2 inch)
2. Control valve installed in valve mount
3. Fitting
4. Hose assembly

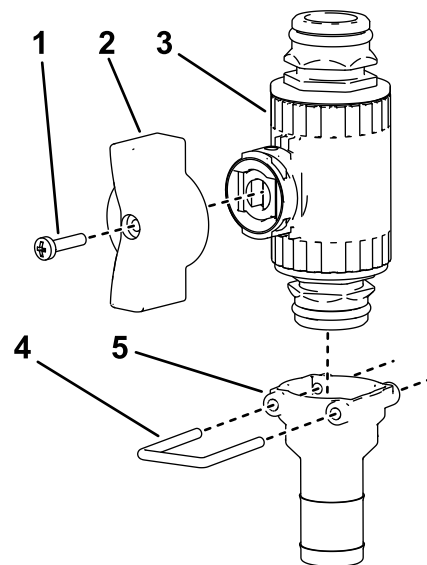
9. Remove the retainer that secures the fitting cap and coupler from the end of the valve section ([Figure 30](#)).
10. Install the included T-manifold to the end of the valve section using the retainer used in step 9.
11. Install the fitting cap to the side of the T-manifold installed in step 9.



**Figure 30**

1. Retainer
2. T-manifold
3. Fitting cap (removed from existing manifold)
4. Coupler

12. Assemble the straight fitting to the other straight control valve using the retainer as shown in [Figure 31](#).



**Figure 31**

1. Handle screw (6-32 x 5/8 inch)
2. Wing handle (green)
3. Control valve
4. Retainer
5. Straight fitting

13. Connect the hose-reel supply hose to the bottom of the straight fitting.
14. Connect the control valve assembly with the straight fitting to the bottom of the T-manifold using the included retainer ([Figure 32](#)).
15. Install the control valve assembly onto the bottom of the control valve bracket using 4 bolts (M6) as shown in [Figure 32](#).



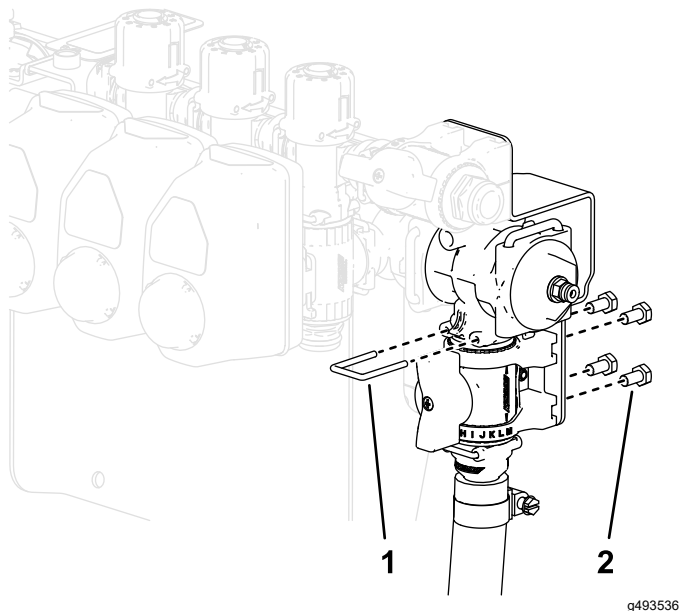


Figure 32

g493536

## Installing the Control Valve to the Machine

**Multi Pro 1750 Turf Sprayers—Serial number 415400000 and After with GeoLink™**

1. Install the actuators removed in [Figure 13](#) to the manifold valve using the previously-removed retainers.
2. Install the control valve bracket onto the valve-mount frame using 2 carriage bolts (1/4-20 x 5/8 inch) and 2 locknuts (1/4-20 inch) as shown in

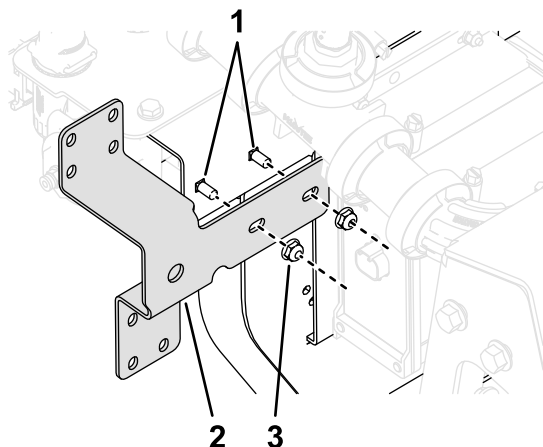


Figure 34

g491712

1. Carriage bolt (1/4-20 x 5/8 inch)
2. Control-valve bracket
3. Locknut (1/4-20 inch)

16. Connect the tank-supply hose to the horizontal control valve using a hose clamp.
17. Secure the open end of the hose-reel supply hose to the straight fitting with a hose clamp.
18. Route the hose-reel supply hose as shown in [Figure 33](#) and attach it to the hose reel with a hose clamp.

**Note:** If the Tank Cleanse Rinse Kit is installed, route the hose behind the rinse pump.

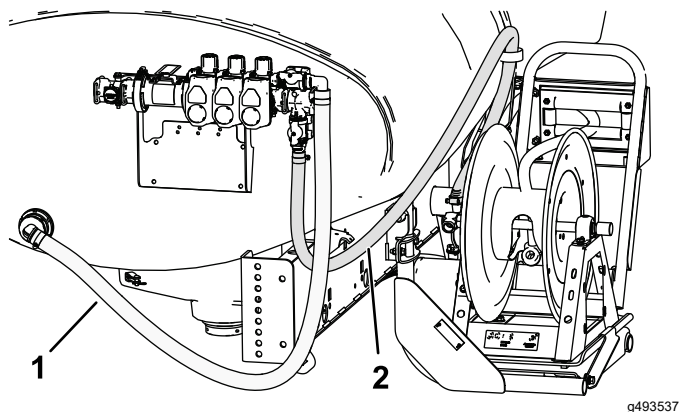


Figure 33

g493537

1. Tank-supply hose
2. Hose-reel supply hose

3. Remove the retainer that secures the fitting cap and coupler from the end of the valve section ([Figure 35](#)).
4. Install the kit T-manifold to the end of the valve section using the retainer removed in step 3.

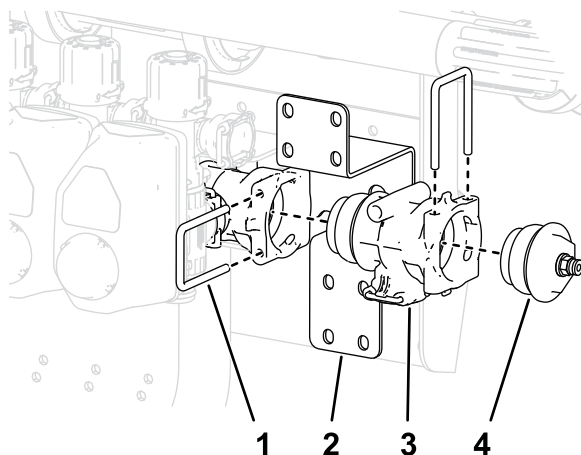
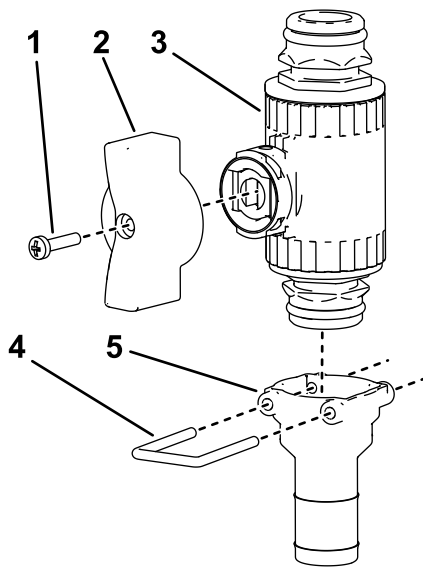


Figure 35

g493719

1. Retainer
2. Control-valve bracket
3. T-fitting
4. Fitting cap and coupler

5. Assemble the green wing handle to a straight control valve [Figure 36](#).

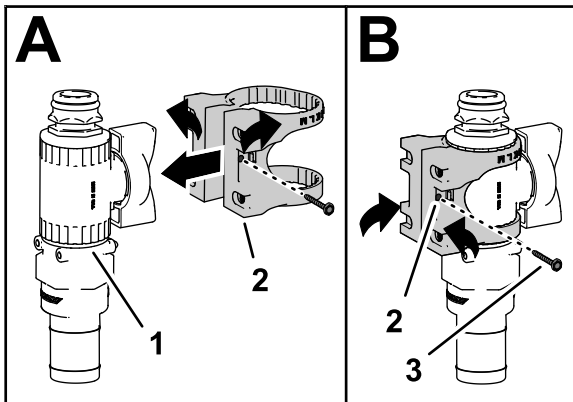


**Figure 36**

g491707

1. Handle screw (6-32 x 5/8 inch)
2. Wing handle (green)
3. Control valve
4. Retainer
5. Straight fitting

6. Assemble the valve mount onto a straight control valve as shown in A of [Figure 37](#).
7. Secure the valve mount to the control valve with the flange-head screw (#6), and tighten the screw by hand (B of [Figure 37](#)).

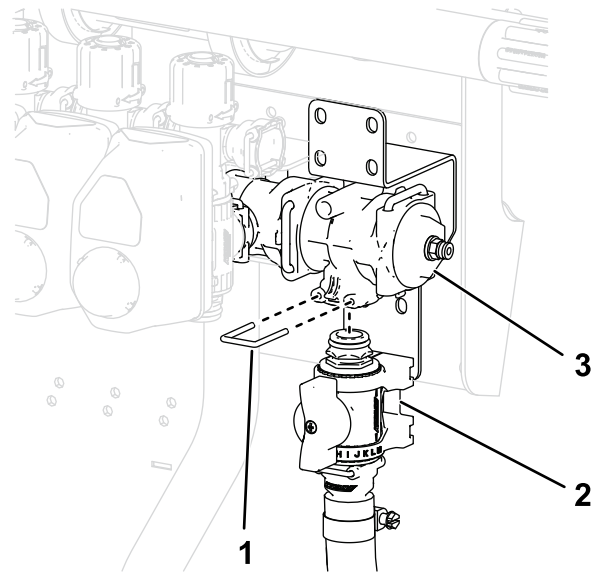


**Figure 37**

g491708

1. Control-valve assembly
2. Valve mount
3. Flange-head screw (#6)

8. Secure the hose-reel supply hose to the straight fitting with a hose clamp.
9. Secure the control-valve assembly to the T-fitting with a retainer as shown in [Figure 38](#).

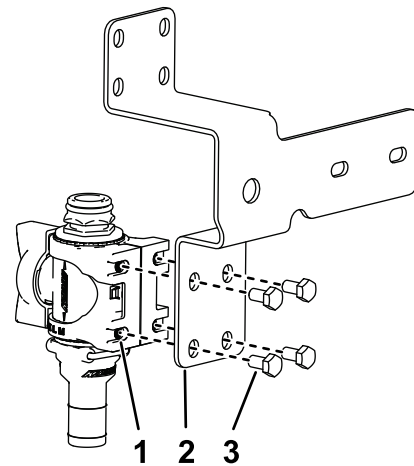


**Figure 38**

g493731

1. Retainer
2. Control-valve assembly
3. T-fitting

10. Assemble the valve mount to the control-valve bracket with the 4 flange-head bolts (M6 x 12 mm); torque the bolts to 10 to 12 N·m (86 to 106 in-lb).



**Figure 39**

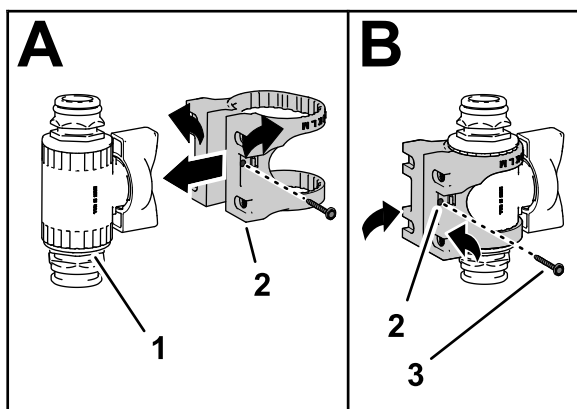
g491709

Some parts not shown for clarity

1. Valve mount
2. Control-valve bracket
3. Flange-head bolt (M6 x 12 mm)

11. Assemble the valve mount onto the control valve as shown in A.
12. Secure the valve mount to the control valve with the flange-head screw (#6), and tighten the screw by hand as shown in B.

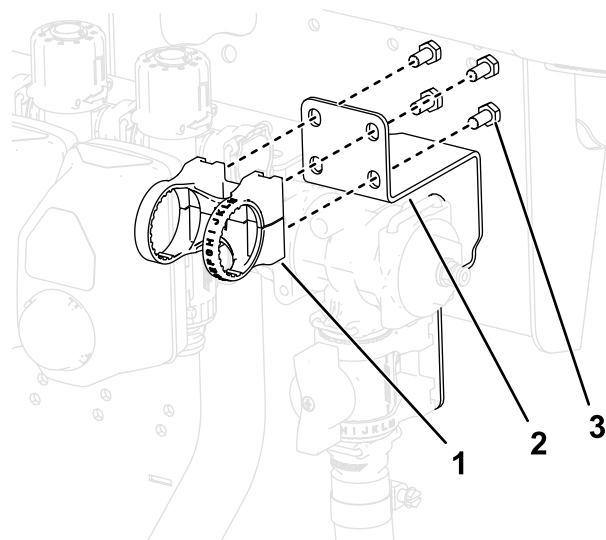




g493417

**Figure 40**

1. Control-valve assembly
2. Valve mount
3. Flange-head screw (#6)



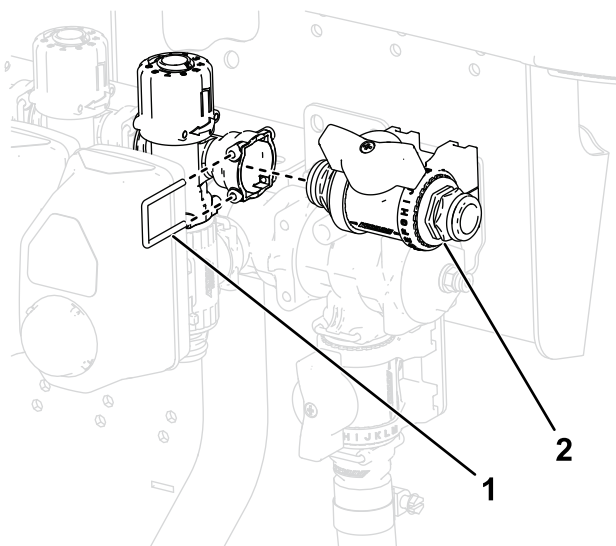
g493790

**Figure 42**

Some parts not shown for clarity

1. Valve mount
2. Bracket
3. Bolts (M6)

13. Install the control-valve assembly to the valve cluster as shown in [Figure 41](#).

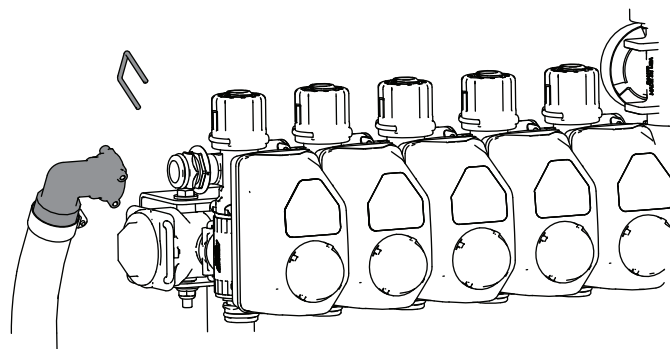


g493802

**Figure 41**

1. Retainer
2. Control-valve assembly

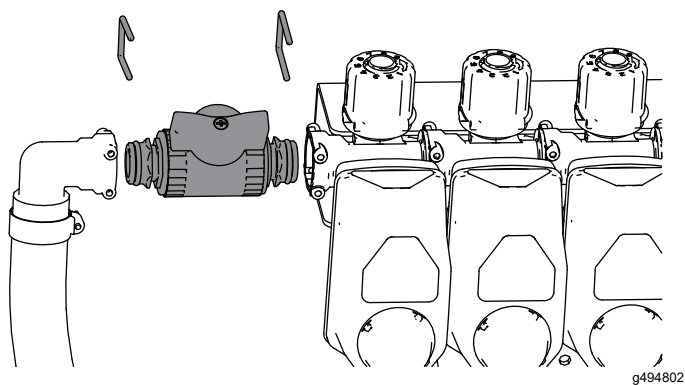
14. Install the control-valve assembly onto the top of the control valve bracket using 4 screws (M6) as shown in [Figure 42](#).



g494803

**Figure 43**

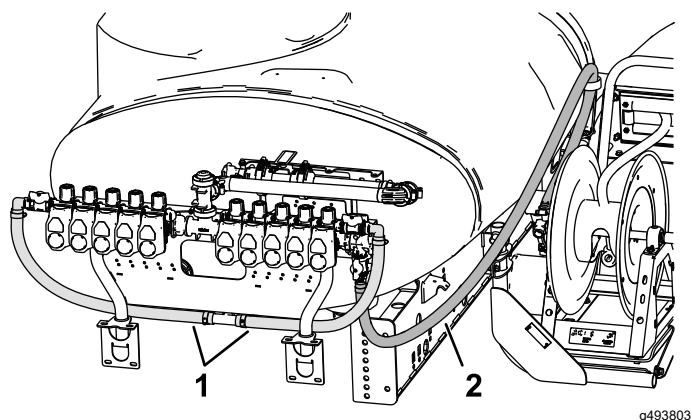
17. Install the shutoff valve on the hose and machine. Secure them with the retainers.



**Figure 44**

g494802

18. Connect the tank-supply hoses to the horizontal control valve using a hose clamp.
19. Route the hose-reel supply hose as shown in and attach it to the hose reel with a hose clamp.



**Figure 45**

g493803

1. Tank-supply hoses
2. Hose-reel supply hose

**Note:** If the Tank Cleanse Rinse Kit is installed, route the hose behind the rinse pump.

# 6

## Connecting the Hoses

Parts needed for this procedure:

1	Long hose with fitting
1	Spray gun
1	Plastic hose clamp

### Procedure

1. Cable tie the wire harness to the supply hose using 2 cable ties.
2. Wrap Teflon® tape around the threads of the hose fitting on the long hose, and install the fitting into the connecting tube on the reel (Figure 46).

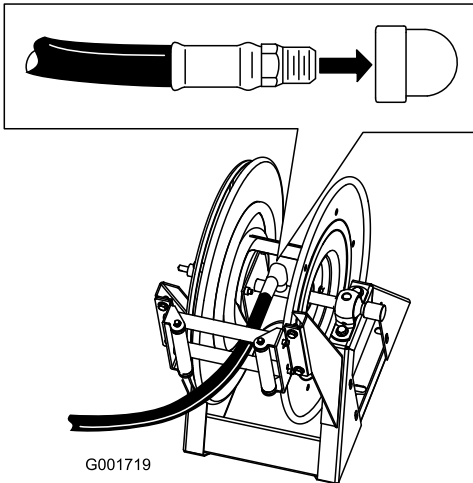


Figure 46

g001719

3. Connect the free end of the long hose to the fitting on the spray gun (Figure 47).

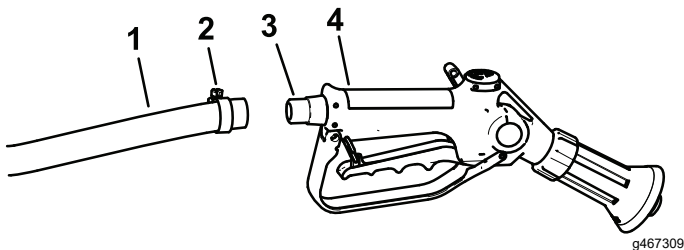


Figure 47

1. Hose
2. Hose clamp
3. Barb
4. Spray gun

4. Secure the end of the hose with a plastic hose clamp.

5. Connect the positive battery wire to the battery.
6. Connect the negative battery wire to the battery.
7. Press the hose wind button, and carefully guide the hose onto the reel moving the hose from side to side to evenly distribute the hose.

### ⚠ CAUTION

Hands, loose clothing, long hair, and jewelry could get caught in the hose and reel while rewinding and cause injury.

- Keep your hands clear of the reel and hose while it is rewinding.
- Do not wear loose clothing or jewelry and tie up long hair.

# Operation

## ⚠ WARNING

Fluid under pressure can penetrate skin and cause injury.

- Keep your body and hands away from nozzles that eject high-pressure fluid.
- Do not aim the sprayer at any person or animal.
- Make sure that all fluid hoses and lines are in good condition and that all connections and fittings are tight before applying pressure to the system.
- Use cardboard or paper to find leaks.
- Safely relieve all pressure in the system before performing any work on it.
- Get immediate medical help if fluid is injected into skin.
- Hot liquids and chemicals can cause burns or other harm.

**Important:** You must always empty and clean the sprayer immediately after each use. Failure to do so may cause the chemicals to dry or thicken in the lines, clogging the pump and other components.

Clean the spray system after **each** spraying session. To properly clean the spray system:

- Use 3 separate rinses.
- Use a minimum of 50 gallons for each rinse.
- Use the cleaners and neutralizers as recommended by the chemical manufacturers.
- Use pure clean water (no cleaners or neutralizers) for the **last** rinse.

## Switching from Boom Spray Mode to Hand Spray Mode

1. Stop the machine, turn the booms off, and set the parking brake.

## ⚠ WARNING

**Driving while using the hand sprayer can cause loss of control, resulting in injury or death. Do not operate the hand sprayer while driving.**

2. At the back of the machine, ensure that the trigger lock on the spray gun is locked.
3. Rotate the green handle on the control valve 90°.
4. At the operating position, turn the pump on.
5. Switch the master boom to the ON position.
6. Set the engine to the desired speed, then engage the neutral engine speed lock.

**Important:** Do not use a pressure setting higher than 1034 kPa (150 psi) with the hand sprayer.

## Spraying with the Hand Sprayer

1. Pull out the desired amount of hose from the reel.

**Important:** Do not pull the hose with the spray gun. Always hold the hose and pull on it directly. Pulling on the hose with the gun may break the fitting on the gun or damage the hose.

2. Release the trigger lock.
3. Direct the spray gun nozzle at the area to be sprayed and pull the trigger.
4. Release the trigger and set the trigger lock when you are finished.

# Switching from Hand Spray Mode to Boom Spray Mode

1. Press the rewind button on the hose reel until only a few feet of hose is out of the reel.

**Note:** The hose-reel rewind button can only be used when the supervisor key on the sprayer console is in the unlocked position.

## **⚠ CAUTION**

**Hands, loose clothing, long hair, and jewelry could get caught in the hose and reel while rewinding and cause injury.**

- **Keep your hands clear of the reel and hose while it is rewinding.**
  - **Do not wear loose clothing or jewelry and tie up long hair.**
2. Rotate the green handle on the control valve 90°.
  3. Direct the spray gun nozzle at an area where it is safe to spray, release the trigger lock, and pull the trigger until all remaining fluid is out of the hose, then set the trigger lock.
  4. Return the spray gun to the holder on the back of the reel.
  5. Return the engine to idle speed.
  6. Stop the pump.

**Important:** Ensure that you flush the spray gun with fresh clean water during your daily cleaning routine (refer to your sprayer *Operator's Manual*). Failure to properly clean the spray gun may degrade the performance and reliability of the hose reel kit and spray gun.

7. Use the rate switch to set the desired kPa (psi).

# Declaration of Incorporation

The Toro Company, 8111 Lyndale Ave. South, Bloomington, MN, USA declares that the following unit(s) conform(s) to the directives listed, when installed in accordance with the accompanying instructions onto certain Toro models as indicated on the relevant Declarations of Conformity.

Model No.	Serial No.	Product Description	Invoice Description	General Description	Directive
41159	415200000 and Up	Electric Hose Reel Kit, Multi Pro 1750 Turf Sprayer	ELECTRIC HOSE REEL KIT - MP1750 KZ VALVE	Sprayer Accessories	2006/42/EC, 2000/14/EC

Relevant technical documentation has been compiled as required per Part B of Annex VII of 2006/42/EC.

We will undertake to transmit, in response to requests by national authorities, relevant information on this partly completed machinery. The method of transmission shall be electronic transmittal.

This machinery shall not be put into service until incorporated into approved Toro models as indicated on the associated Declaration of Conformity and in accordance with all instructions, whereby it can be declared in conformity with all relevant Directives.

Certified:



Tom Langworthy  
Engineering Director  
8111 Lyndale Ave. South  
Bloomington, MN 55420, USA  
April 29, 2024

Authorized Representative:

Marcel Dutrieux  
Manager European Product Integrity  
Toro Europe NV  
Nijverheidsstraat 5  
2260 Oevel  
Belgium

# UK Declaration of Incorporation

The Toro Company, 8111 Lyndale Ave. South, Bloomington, MN, USA declares that the following unit(s) conform(s) to the directives listed, when installed in accordance with the accompanying instructions onto certain Toro models as indicated on the relevant Declarations of Conformity.

Model No.	Serial No.	Product Description	Invoice Description	General Description	Regulation
41159	415200000 and Up	Electric Hose Reel Kit, Multi Pro 1750 Turf Sprayer	ELECTRIC HOSE REEL KIT - MP1750 KZ VALVE	Sprayer Accessories	S.I. 2001 No. 1701, S.I. 2008 No. 1597

Relevant technical documentation has been compiled as required per Schedule 9.

We will undertake to transmit, in response to requests by national authorities, relevant information on this partly completed machinery. The method of transmission shall be electronic transmittal.

This machinery shall not be put into service until incorporated into approved Toro models as indicated on the associated Declaration of Conformity and in accordance with all instructions, whereby it can be declared in conformity with all relevant Directives.

This declaration has been issued under the sole responsibility of the manufacturer.  
The object of the declaration is in conformity with relevant UK legislation.



Tom Langworthy  
Engineering Director  
8111 Lyndale Ave. South  
Bloomington, MN 55420, USA  
April 29, 2024

Authorized Representative:

Marcel Dutrieux  
Manager European Product Integrity  
Toro U.K. Limited  
Spellbrook Lane West  
Bishop's Stortford  
CM23 4BU  
United Kingdom



**Count on it.**