



## Quiet Collector

### Wheel Horse® 260-Series Lawn and Garden Tractors

Model No. 78200 - 230000001 and up.

## Parts Catalog

---

### Ordering Replacement Parts

To order replacement parts, please supply: the part number, the quantity, and the description of each part desired.

### Understanding Reference Numbers

Each identified part in an illustration has a reference number. The reference number for a part also appears in the parts list, along with other information about the part.

This catalog uses two special reference number formats, one to indicate parts in a service assembly and another to indicate the quantity of a given part in an illustration.

### Service Assembly Reference Numbers

Parts in service assemblies have reference numbers in the form **a:b**. The **a** represents the reference number of the entire service assembly and the **b** represents a sequential number unique to each part within the service assembly.

For example, a wheel assembly might be identified by reference number **6**, the tire by **6:1**, the valve by **6:2**, and the wheel by **6:3**. When you order the assembly identified by reference number **6**, you receive all parts identified by reference numbers **6:1**, **6:2**, and **6:3**. However, you may also order any part individually. Reference numbers of this type appear in illustrations and in part lists.

### Reference Numbers Indicating Quantity

In an illustration, if a reference number indicates more than one part, the reference number has the form **nX y**. The **n** represents the quantity of the part, the **X** is the multiplication symbol, and the **y** represents the reference number.

For example, in an illustration, the reference number **2X 37** means that two of the parts identified by reference number **37** are indicated.

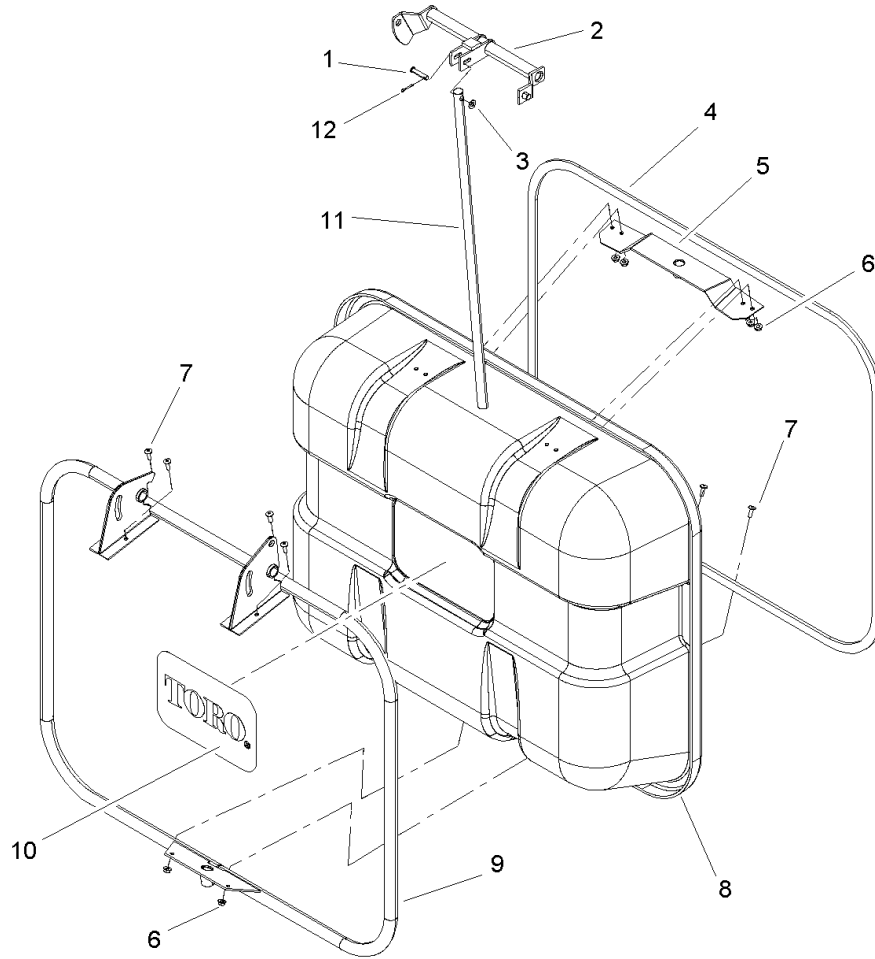
## Part Description Abbreviations

Part descriptions in this catalog may include the following abbreviations.

AR. ....	as required	HWHTF. ....	hex washer head thread forming
ASM. ....	assembly	HYD. ....	hydraulic
CARR. ....	carriage	INC. ....	incorporated
DEG. ....	degrees	LH. ....	left hand
FH. ....	flat head	NI. ....	nylon insert
GA. ....	gauge	PPH. ....	phillips pan head
HF. ....	hex flange	PTH. ....	phillips truss head
HH. ....	hex head	PTO. ....	power take off
HHF. ....	hex head flange	RH. ....	right hand
HHFTF. ....	hex head flange thread forming	SFH. ....	slotted fillister head
HJ. ....	hex jam	SHH. ....	slotted hex head
HLH. ....	hex lag head	SHWH. ....	slotted hex washer head
HOC. ....	height-of-cut	SPH. ....	slotted pan head
HS. ....	hex	SQH. ....	square head
HSBH. ....	hex socket button head	SRH. ....	slotted round head
HSFH. ....	hex socket flat head	STD. ....	standard
HSH. ....	hex socket head	TAP. ....	self tapping
HWH. ....	hex washer head	TTH. ....	torx truss head

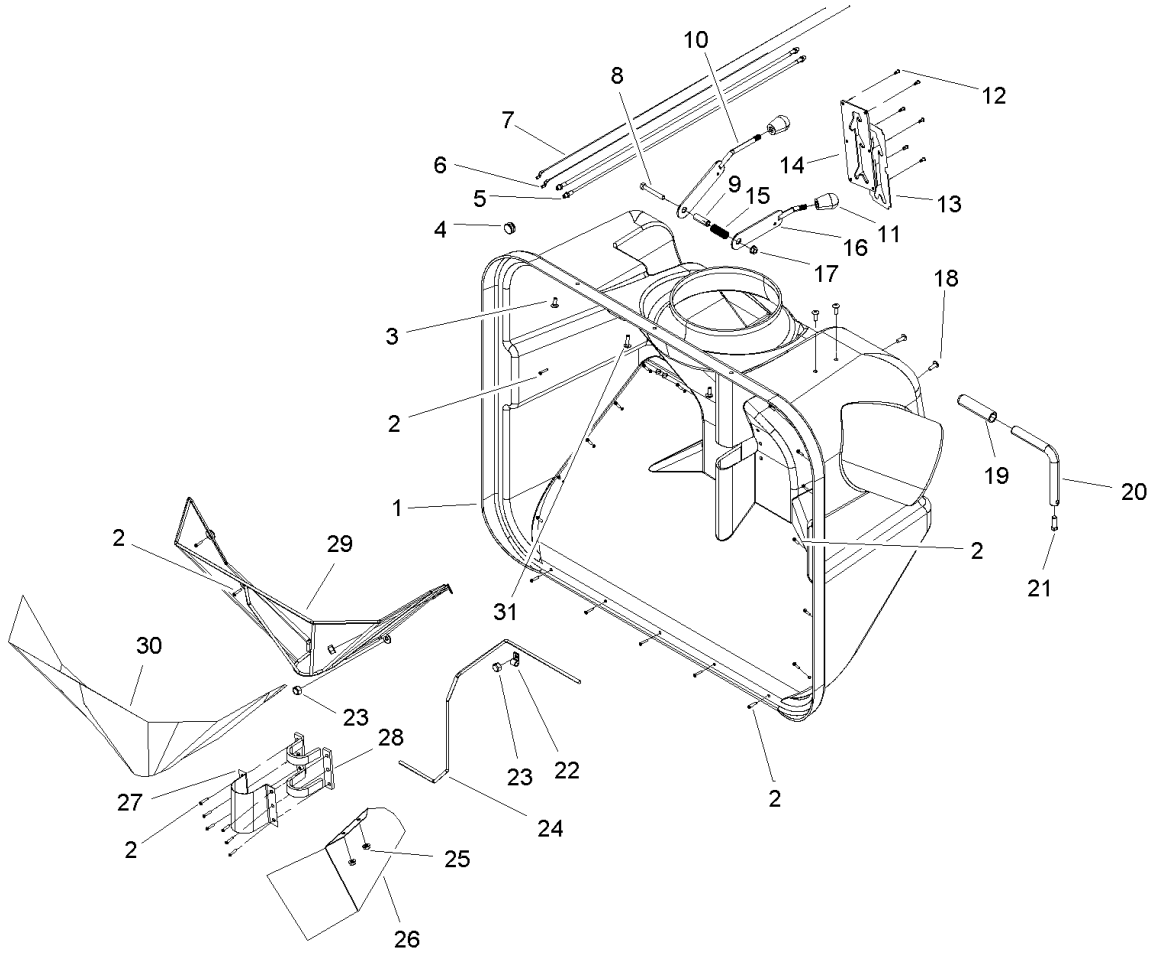
## Contents

<b>Description</b>	<b>Page</b>
Hopper Back Assembly	..... 3
Front Hopper Assembly	..... 4
Frame and Bottom Hopper Assembly	..... 5
Scroll Assembly	..... 6
Baffle and Tube Assembly	..... 7
Hitch and Pulley Assembly	..... 8



### Hopper Back Assembly

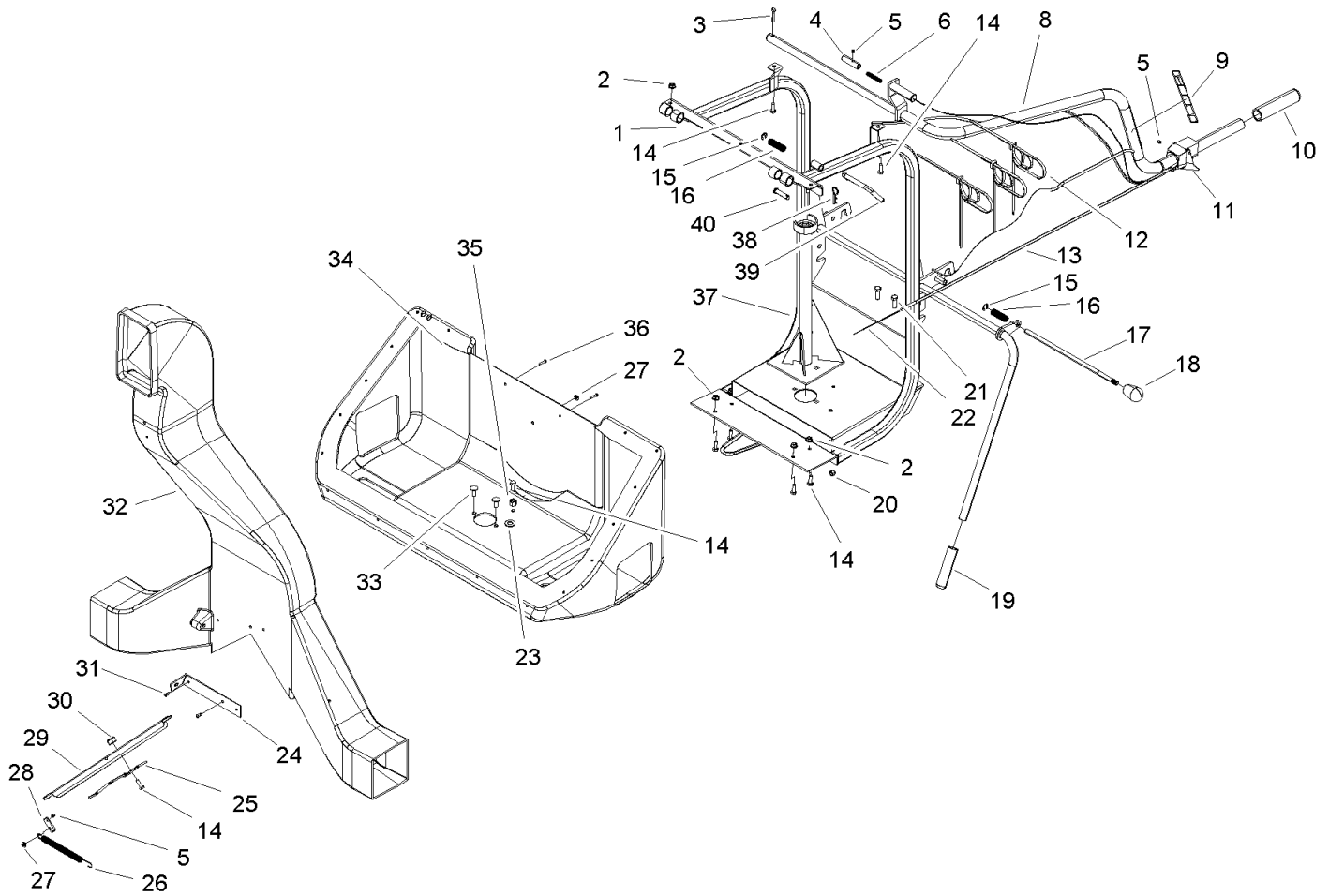
Ref	Part No.	Qty.	Description				
1	98-3637	1	Pin				
2	98-3657	1	Lever				
3	3256-23	1	Washer-Flat				
4	98-3645	1	Seal-Stripping				
5	98-9172	1	Bracket-Guide				
6	32128-33	6	Nut-HF				
7	9114604	6	Screw-Truss Head				
8	98-9170	1	Hopper-Back				
9	98-9171	1	Frame				
10	67-7310	1	Decal-Toro				
11	98-9173	1	Rod-Locking				
12	3272-10	1	Pin-Cotter				



## Front Hopper Assembly

Ref	Part No.	Qty.	Description
1	98-3601	1	Hopper-Front
2	32144-23	26	Screw-Metal
3	3229-1	2	Screw-CARR
4	98-3650	1	Cap-Rubber
5	98-3618	2	Shield-Cable
6	98-3620	1	Cable
7	98-9182	1	Cable-Control
8	322-11	1	Screw-HH
9	98-3648	1	Sleeve
10	98-9177	1	Lever-Clutch
11	98-3672	2	Knob-Oval
12	92-9665	6	Screw
13	106-2654	1	Decal-Operation
14	106-3460	1	Plate-Lever
15	98-3647	1	Spring
16	98-9176	1	Lever-Air Control
17	32128-20	1	Nut-HF
18	9114604	4	Screw-Truss Head
19	98-3662	1	Grip-Handle
20	98-9185	1	Arm-Fill Gauge
21	3243-5	1	Screw-Set
22	98-9144	1	Clip-Cable, Nylon
23	3296-8	3	Nut-Lock, NI
24	98-9190	1	Rod-Fill Gauge
25	32128-33	2	Nut-HF

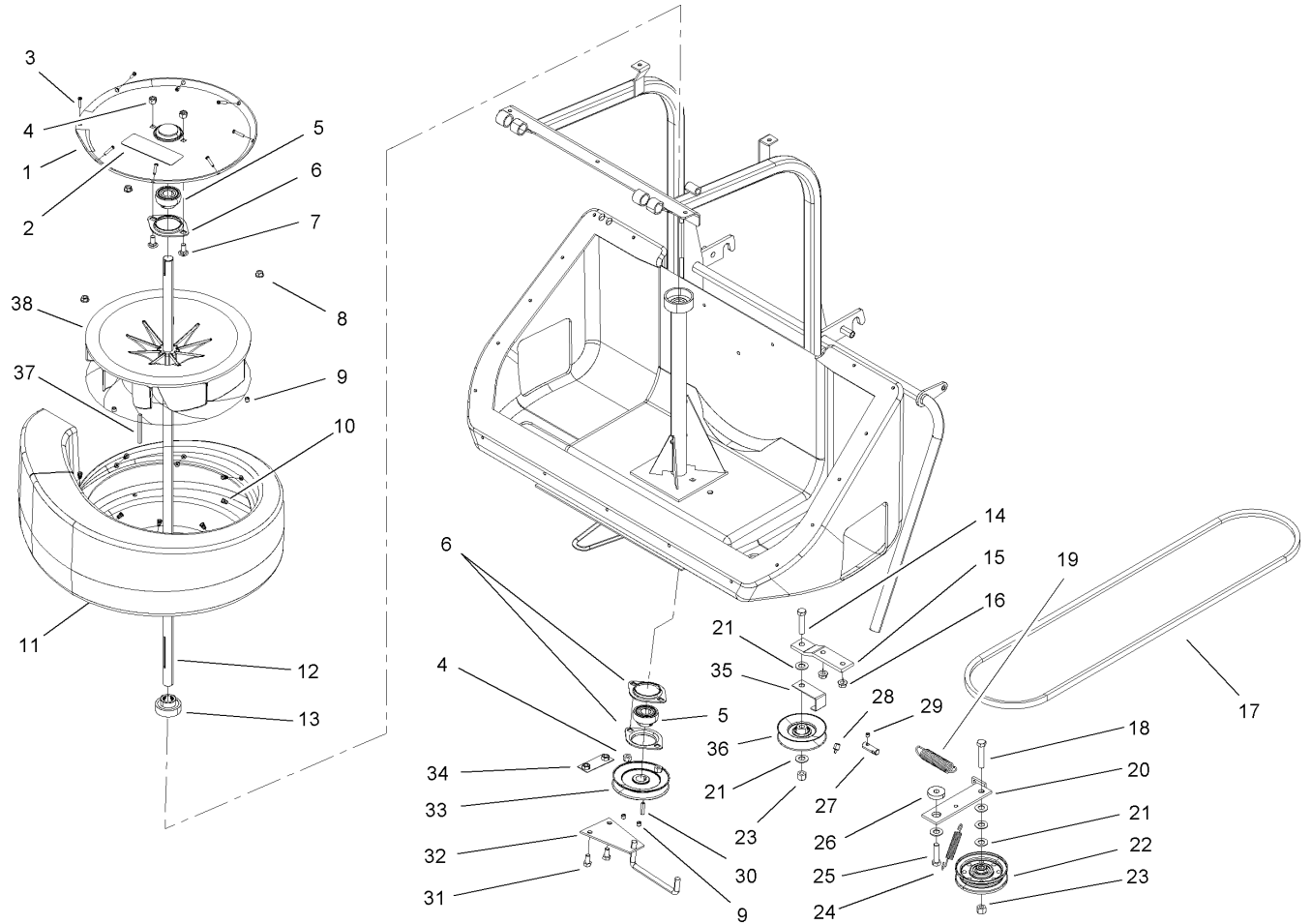
Ref	Part No.	Qty.	Description
26	98-9186	1	Baffle-Grass
27	98-9164	1	Cover-Bearing
28	98-9151	1	Seal-Stripping
29	98-9178	1	Frame-Filter
30	98-9181	1	Filter
31	3229-2	1	Screw-CARR



## Frame and Bottom Hopper Assembly

Ref	Part No.	Qty.	Description
1	98-3651	1	Frame
2	32128-33	6	Nut-HF
3	3272-21	1	Pin-Cotter
4	98-3665	1	Pin-Lock
5	3245-1	3	Screw-Set, HSH
6	98-3627	1	Spring
8	98-3646	1	Arm-Dump
9	98-3679	1	Decal-Dump Arm Operation
10	98-3669	1	Grip-Handle
11	98-3622	1	Lever-Control
12	3290-378	3	Tie-Cable
13	98-3619	1	Shield-Cable
14	321-4	8	Screw-HH
15	98-3659	2	Ring-Retainer
16	98-3640	2	Spring
17	98-3668	1	Pin-Hitch
18	98-3672	1	Knob-Oval
19	98-3662	1	Grip-Handle
20	3296-42	1	Nut-Lock, NI
21	322-5	2	Screw-HH
22	98-3621	1	Cable
23	3256-25	1	Washer-Flat
24	98-3694	1	Bracket-Reinforcing
25	98-3644	1	Lever-Door
26	98-3642	1	Spring

Ref	Part No.	Qty.	Description
27	98-3652	2	Washer-Cap
28	98-3681	1	End-Cable
29	98-9175	1	Door-Air
30	3296-19	1	Nut-Lock NI
31	92-9665	2	Screw
32	98-3605	1	Dock-Air
33	3230-23	2	Screw-CARR
34	98-3602	1	Hopper-Bottom
35	3296-39	1	Nut-Lock, NI
36	32144-23	2	Screw-Metal
37	98-9139	1	Support-Shaft
38	98-3696	1	Hairpin
39	98-3613	1	Hook
40	98-3695	1	Pin-Hitch

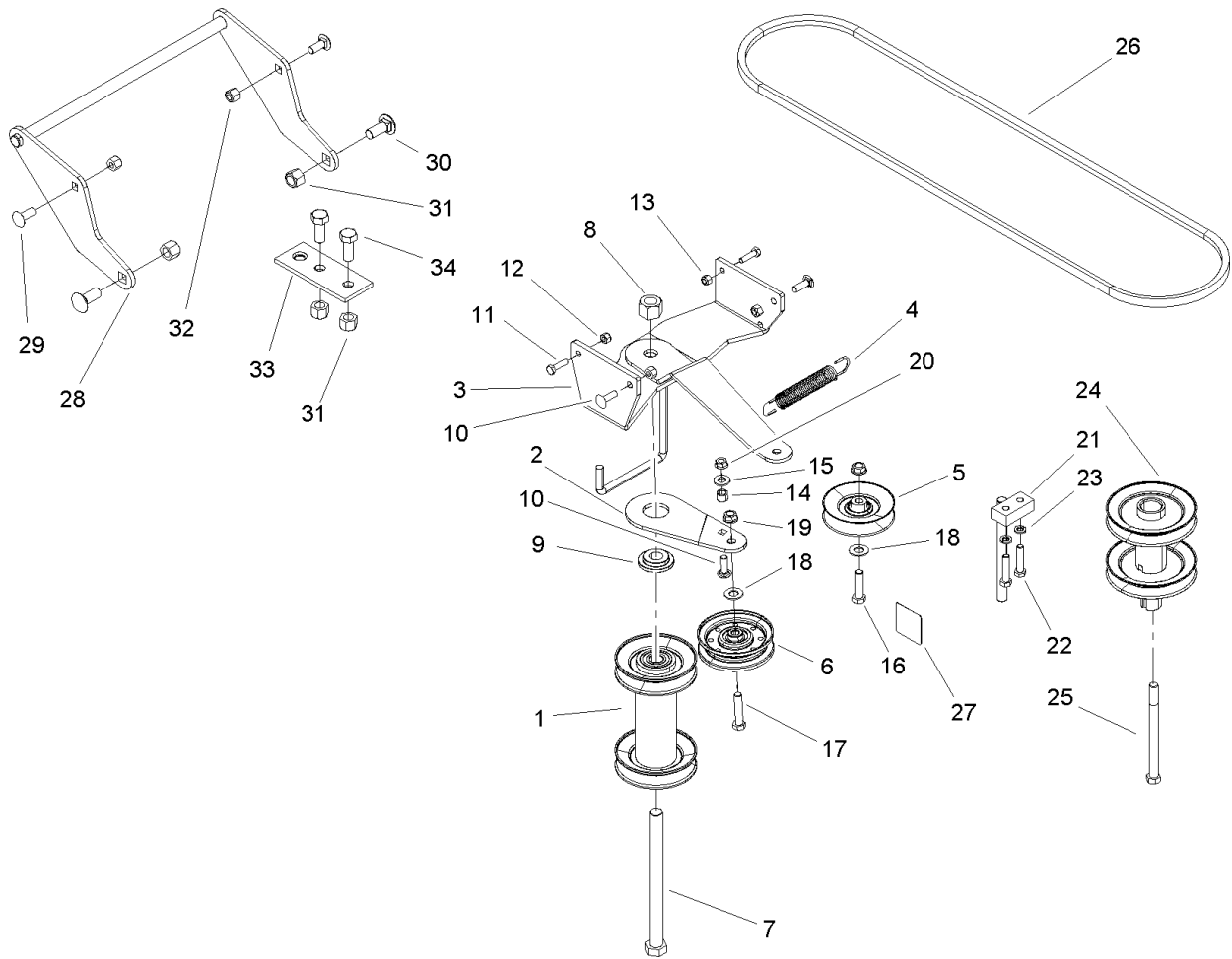


### Scroll Assembly

Ref	Part No.	Qty.	Description
1	98-3604	1	Cover-Scroll
2	106-4156	1	Decal-Hazard, Add Weight
3	3250-17	8	Screw-PPH
4	3296-29	4	Nut-Lock, NI
5	98-3690	2	Bearing
6	98-3691	3	Flange
7	3230-1	2	Bolt-CARR
8	32128-33	2	Nut-HF
9	3246-2	2	Screw-Set, HSH
10	98-9145	8	Nut-Insert
11	98-9146	1	Scroll
12	98-9141	1	Shaft
13	98-9150	1	Bearing
14	323-9	1	Screw-HH
15	106-3450	1	Bracket
16	32128-20	2	Nut-HF
17	106-3453	1	Belt-V
18	323-10	1	Screw-HH
19	98-9195	1	Spring-Extension
20	98-9196	1	Arm-Idler
21	3256-25	6	Washer-Flat
22	98-9135	1	Idler-Flat
23	3296-39	2	Nut-Lock, NI
24	98-9197	1	Spring-Extension
25	323-8	1	Screw-HH

Ref	Part No.	Qty.	Description
26	98-3632	1	Washer-Flange
27	98-3681	1	End-Cable
28	98-9194	1	Grommet-Cable
29	3245-1	1	Screw-Set, HSH
30	98-3692	1	Key
31	322-2	2	Screw-HH
32	106-3452	1	Guide-Belt
33	98-3623	1	Pulley-V
34	106-3451	1	Plate-Mounting
35	98-9199	1	Guide-Belt
36	98-9198	1	Pulley-V
37	98-3628	1	Key
38	98-9140	1	Fan





## Hitch and Pulley Assembly

Ref	Part No.	Qty.	Description
1	98-9179	1	Pulley-Double
2	98-9189	1	Arm-Idler
3	98-9191	1	Frame-Drive
4	98-3636	1	Spring
5	98-9198	1	Pulley-V
6	98-9135	1	Idler-Flat
7	327-27	1	Screw-HH
8	3296-53	1	Nut-Lock, NI
9	98-9161	1	Washer-Flange
10	3230-22	3	Screw-CARR
11	321-6	2	Screw-HH
12	3296-29	2	Nut-Lock, NI
13	3296-42	2	Nut-Lock, NI
14	98-9162	1	Sleeve
15	3256-24	1	Washer-Flat
16	323-8	1	Screw-HH
17	323-9	1	Screw-HH
18	3256-25	2	Washer-Flat
19	3290-357	2	Nut-HHF
20	32128-20	1	Nut-HF
21	98-9192	1	Shim
22	322-7	2	Screw-HH
23	3253-4	2	Washer-Lock
24	98-9183	1	Pulley-Engine
25	3212-26	1	Screw-HH

Ref	Part No.	Qty.	Description
26	98-9193	1	Belt-V
27	106-2655	1	Decal-Hazard, Pinched Finger
28	98-9188	1	Hitch-Quick, Tractor
29	3231-2	2	Screw-CARR
30	3233-1	2	Screw-CARR
31	3296-23	4	Nut-Lock, NI
32	3296-39	2	Nut-Lock, NI
33	98-9187	1	Plate-Hitch
34	325-5	2	Screw-HH

# NOTES

## NOTES

## NOTES

