



## 1332 Power Shift<sup>®</sup> Snowthrower

Model No. 38592-240000001 and Up

### Parts Catalog

#### Ordering Replacement Parts

To order replacement parts, please supply: the part number, the quantity, and the description of each part desired.

#### Understanding Reference Numbers

Each identified part in an illustration has a reference number. The reference number for a part also appears in the parts list, along with other information about the part.

This catalog uses two special reference number formats, one to indicate parts in a service assembly and another to indicate the quantity of a given part in an illustration.

#### Service Assembly Reference Numbers

Parts in service assemblies have reference numbers in the form **a:b**. The **a** represents the reference number of the entire service assembly and the **b** represents a sequential number unique to each part within the service assembly.

For example, a wheel assembly might be identified by reference number **6**, the tire by **6:1**, the valve by **6:2**, and the wheel by **6:3**. When you order the assembly identified by reference number **6**, you receive all parts identified by reference numbers **6:1**, **6:2**, and **6:3**. However, you may also order any part individually.

Reference numbers of this type appear in illustrations and in part lists.

#### Reference Numbers Indicating Quantity

In an illustration, if a reference number indicates more than one part, the reference number has the form **nX y**. The **n** represents the quantity of the part, the **X** is the multiplication symbol, and the **y** represents the reference number.

For example, in an illustration, the reference number **2X 37** means that two of the parts identified by reference number **37** are indicated.

## Contents

Description	Page	Description	Page
Housing and Engine Frame Assembly . . . . .	3	Carburetor Part No. 640105 . . . . .	12
32in Auger Gearcase Assembly Part No. 74-1562 . . . . .	5	Tecumseh Engine Assembly Model No. OHSK130-223818E . . . . .	13
Engine and Transmission Assembly . . . . .	6	Tecumseh Engine Assembly Model No. OHSK130-223818E . . . . .	14
Traction Gearcase Assembly Part No. 66-8030 . . . . .	7	Tecumseh Engine Assembly Model No. OHSK130-223818E (continued) . . . . .	15
Power Shift Control Assembly . . . . .	9	Electric Starter (110 Volt) Part No. 37105 . . . . .	16
Handle and Control Assembly . . . . .	10	Recoil Starter Part No. 590749 . . . . .	17
Lower Traction Assembly . . . . .	11	Recoil Starter Part No. 590733 (Optional) . . . . .	18

## Part Description Abbreviations

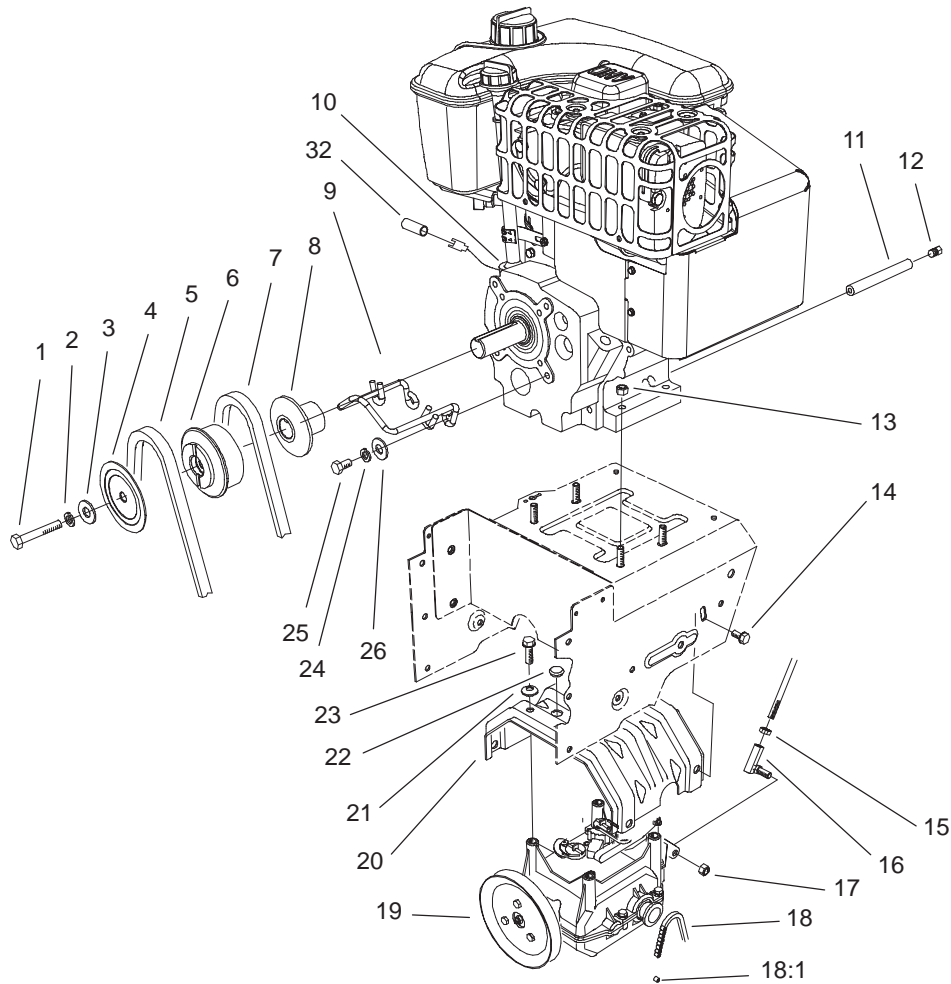
Part descriptions in this catalog may include the following abbreviations.

Abbreviation	Meaning	Abbreviation	Meaning
AR . . . . .	as required	HYD . . . . .	hydraulic
ASM . . . . .	assembly	INC . . . . .	incorporated
CARR . . . . .	carriage	LH . . . . .	left hand
DEG . . . . .	degrees	NI . . . . .	nylon insert
FH . . . . .	flat head	PPH . . . . .	Phillips pan head
GA . . . . .	gauge	PTH . . . . .	Phillips truss head
HF . . . . .	hex flange	PTO . . . . .	power take off
HH . . . . .	hex head	RH . . . . .	right hand
HHF . . . . .	hex head flange	SFH . . . . .	slotted fillister head
HLH . . . . .	hex lag head	SHH . . . . .	slotted hex head
HJ . . . . .	hex jam	SQH . . . . .	square head
HOC . . . . .	height-of-cut	SHWH . . . . .	slotted hex washer head
HS . . . . .	hex socket	SPH . . . . .	slotted pan head
HSBH . . . . .	hex socket button head	SRH . . . . .	slotted round head
HSFH . . . . .	hex socket flat head	STD . . . . .	standard
HSH . . . . .	hex socket head	TAP . . . . .	self tapping
HWH . . . . .	hex washer head	TTH . . . . .	Torx truss head
HWHTF . . . . .	hex washer head thread forming	WH . . . . .	wing head









Sheet No.:3

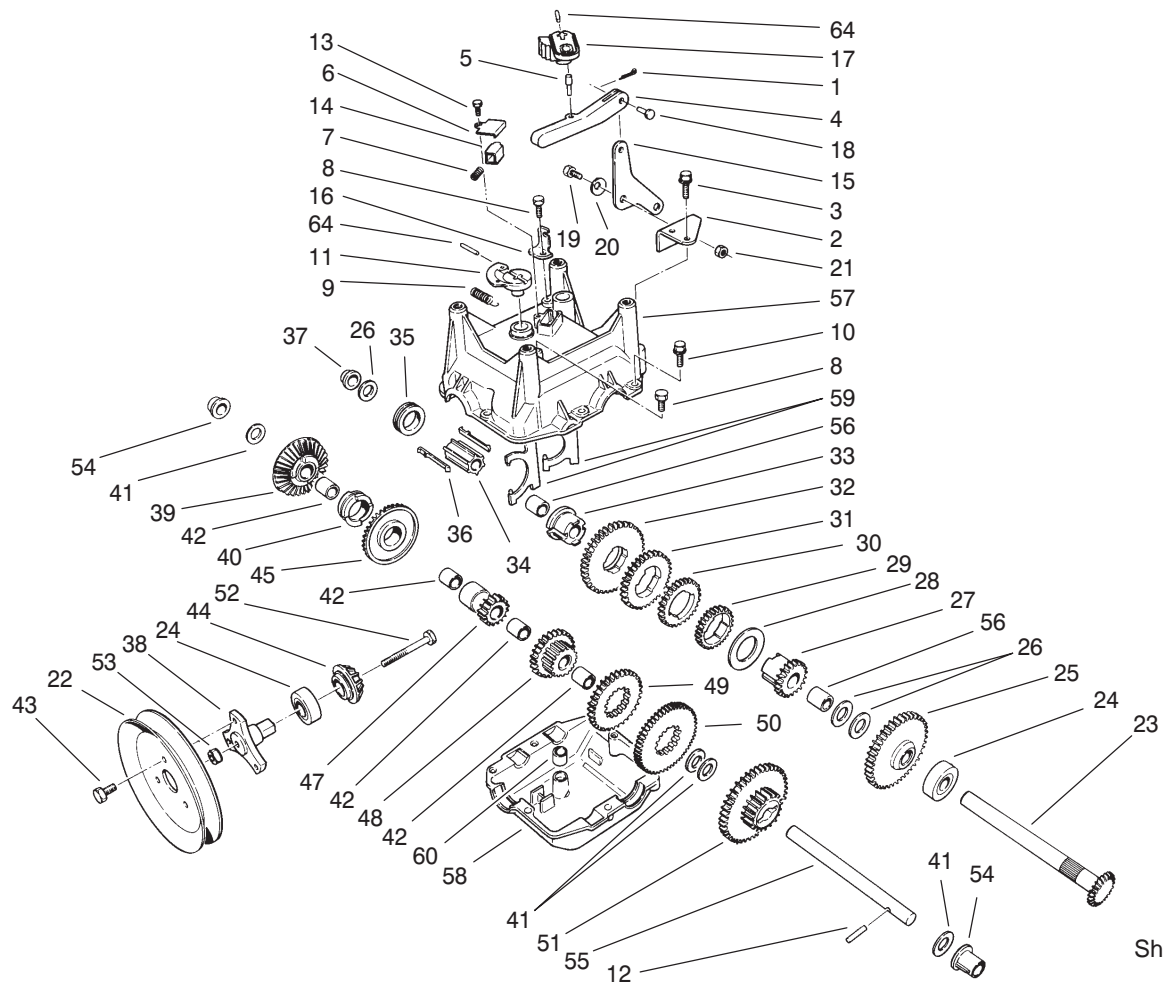
## Engine and Transmission Assembly

Ref. No.	Part No.	Qty.	Description
1	3212-8	1	Screw-HH
2	3253-6	1	Washer-Lock
3	3256-41	1	Washer-Flat
4	62-0940	1	Sheave-Half, Impeller
5	63-2967	1	V Belt
6	62-0930	1	Pulley-Engine, Center
7	63-2955	1	V-Belt, Traction
8	62-0920	1	Sheave-Half, Traction
9	100-3432	1	Guide-Belt
☆10		1	Engine-13hp Tecumseh Ohsk 130-223818e
*10:2	99-9300	1	Cord-Extension
11	289-34	1	Nipple-Pipe
12	288-2	1	Cap-Pipe
13	32128-20	4	Nut-HF
14	3234-7	4	Screw-HHF
15	3220-3	1	Nut-Jam
16	78-2920	1	Ball-Joint
17	3296-6	1	Nut-Lock, NI
18	63-2930	1	Chain
18:1	2710-15	1	Link-Offset
19	66-8030	1	Traction Gearcase ASM
20	63-2990-03	1	Transmission Frame ASM

Ref. No.	Part No.	Qty.	Description
21	3290-461	4	Washer-Spring
22	95-7947	2	Cap-Plug
23	11-0590	4	Screw-HWH, Thd Form
24	3253-4	2	Washer-Lock
25	3210-3	2	Screw-HH
26	3256-41	2	Washer-Flat
32	94-2782	1	Cap-Wire, Lite

☆ Not serviced separately

\* Not illustrated

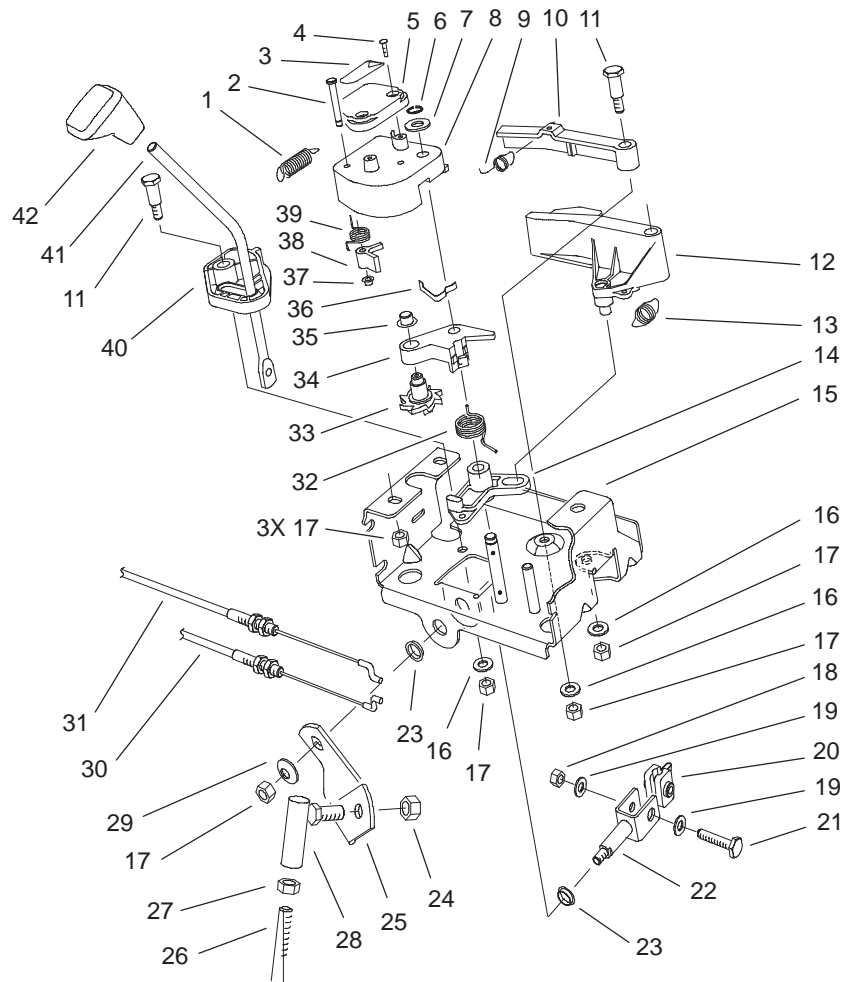


Sheet No.:A2

## Traction Gearcase Assembly Part No. 66-8030

Ref. No.	Part No.	Qty.	Description	Ref. No.	Part No.	Qty.	Description
1	3272-1	1	Pin-Cotter	27	62-0340	1	Gear-Sleeve, 19 T
2	62-1190	1	Bracket-Bellcrank	28	63-2280	1	Washer-Thrust
3	32104-95	2	Screw-HWH	29	62-0250	1	Gear, 29 T
4	62-0860	1	Link-Shift, Gear	30	62-0200	1	Gear, 27 T
5	63-2190	1	Pin-Link, Gear Shift	31	62-0220	1	Gear, 34 T
6	62-1690	1	Cover-Detent	32	62-0240	1	Gear, 45 T
7	63-2890	1	Spring-Detent	33	62-0320	1	Sleeve-Gear
8	32144-4	2	Screw-HWH	34	68-4320	1	Sleeve-Shift
9	63-2920	1	Spring-Extension	35	62-0430	1	Collar-Shift
10	32144-86	6	Screw-HH	36	62-0310	2	Key-Shift
11	62-0880	1	Lever	37	62-1180	1	Bushing-Flange, Output
12	32121-106	1	Pin-Spring	38	62-0380	1	Hub-Pulley
13	32104-71	1	Screw-HWH	39	67-5860	1	Gear-Bevel, Rev, 36 T
14	62-1020	1	Button-Detent	40	67-5880	1	Collar-Shift
15	63-2600	1	Bellcrank	41	257-10	4	Washer-Thrust
16	62-1740	1	Bracket-Cable	42	62-1160	4	Bushing
17	62-0870	1	Lever-Shift, Gear	43	12-3270	3	Screw
18	283-3	1	Pin-Clevis	44	62-0350	1	Pinion-Bevel
19	63-3410	1	Screw-Shoulder	45	67-5870	1	Gear-Bevel, 36 T
20	3290-477	1	Washer-Curved	47	62-0500	1	Gear-Bevel, 15 T
21	3296-42	1	Nut-Lock, NI	48	68-4310	1	Gear, 26 T
22	62-1310	1	Traction-Sheave, Half	49	62-0210	1	Gear, 33 T
23	62-1080	1	Shaft-Output	50	62-0260	1	Gear, 51 T
24	100-1048	2	Bearing-Ball	51	62-0360	1	Gear, 19/41 T
25	62-0370	1	Gear, 41 T	52	321-15	1	Screw-HH
26	252-59	3	Bearing-Thrust				

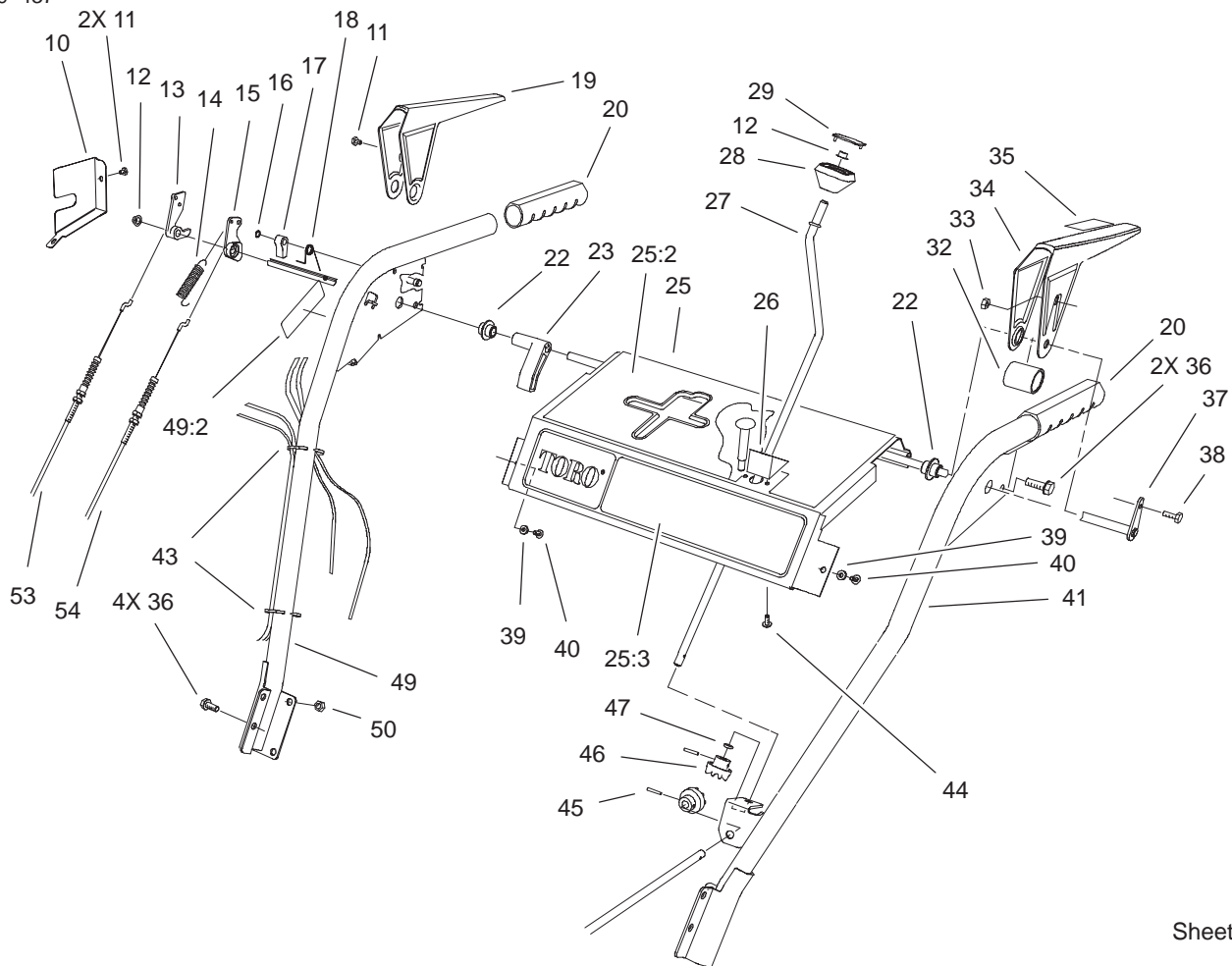




Sheet No.:4

## Power Shift Control Assembly

Ref. No.	Part No.	Qty.	Description	Ref. No.	Part No.	Qty.	Description
1	63-2220	1	Spring-Extension	26	63-2830	1	Rod-Bent Shift, Lower
2	63-2610	1	Pin-Tang	27	3220-3	1	Nut-Jam
3	63-2480	1	Decal-Number 2	28	78-2920	1	Ball-Joint
4	94-6961	2	Screw	29	3290-456	1	Washer-Belleville
5	62-1140	1	Cover-Latch	30	63-2210	1	Cable-Gearbox
6	32120-46	1	Ring-Retaining	31	63-2200	1	Cable-Arm, Latch
7	257-9	1	Washer-Thrust	32	63-2270	1	Spring-Torsion
8	62-1100	1	Lever Latch	33	62-0170	1	Wheel-Index
9	63-2240	1	Spring-Extension	34	62-1110	1	Lever-Wheel, Index
10	62-1700	1	Lever-Lockout	35	3290-320	1	Retainer-Push On
11	63-2650	2	Screw-Shoulder	36	62-1710	1	Spring-Flat
12	62-1130	1	Lever-Reverse	37	3290-422	1	Nut-Push
13	63-2230	1	Spring-Extension	38	62-0180	1	Tang-Index
14	62-1120	1	Lever-Reverse, Switch	39	62-1650	1	Spring-Torsion
15	63-2150-03	1	Control Frame ASM	40	62-1470	1	Base-Lockout
16	3256-23	3	Washer-Flat	41	67-9240	1	Rod-Shift
17	3296-29	7	Nut-Lock, NI	42	62-1290	1	Knob-Shift
18	3296-42	1	Nut-Lock, NI				
19	3256-1	2	Washer-Flat				
20	67-9250	1	Retainer-Rod, Shift				
21	321-9	1	Screw-HH				
22	66-7730	1	Clevis ASM				
23	256-296	2	Bushing				
24	3296-6	1	Nut-Lock, NI				
25	63-2630	1	Bracket-Shift				

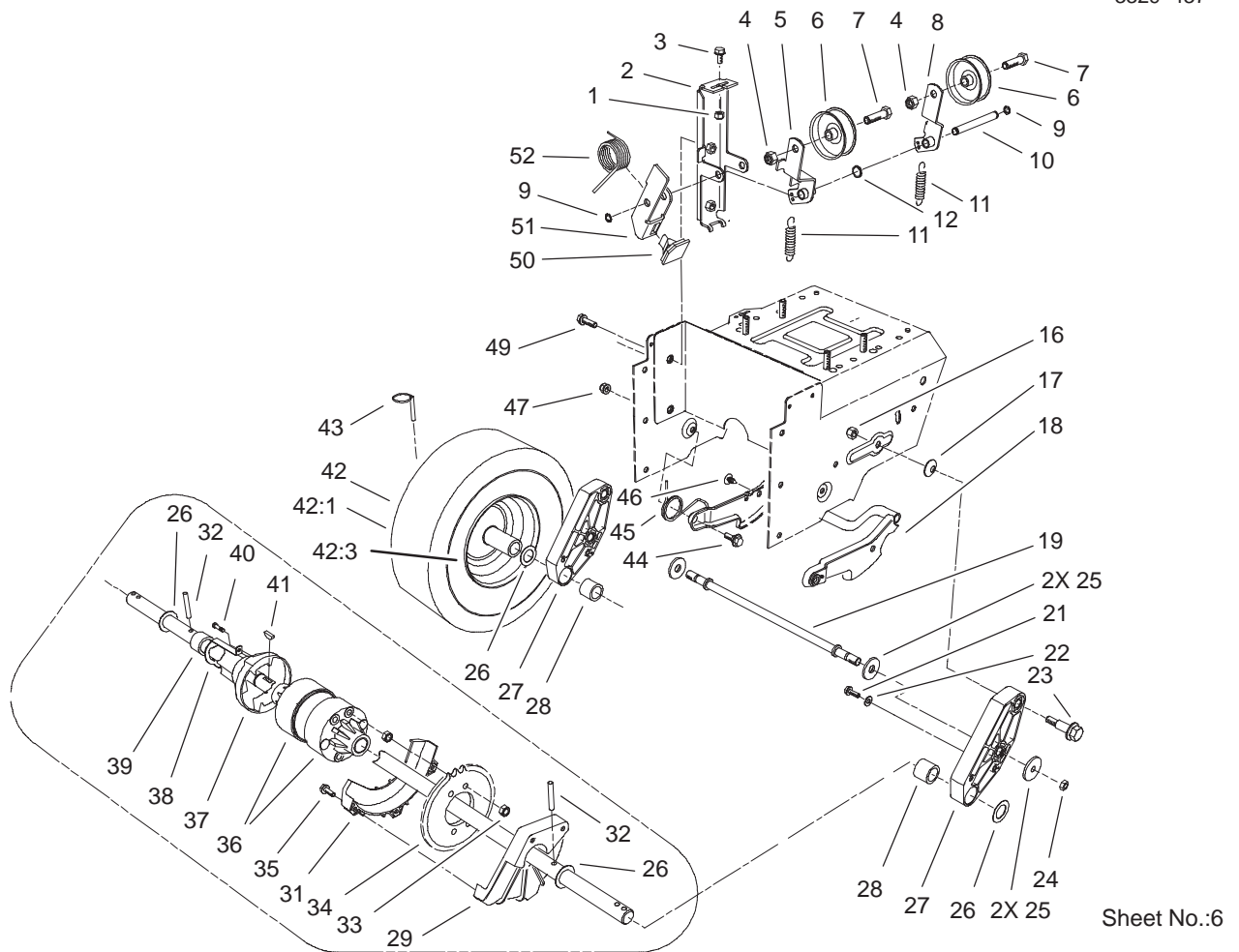


Sheet No.:5

## Handle and Control Assembly

Ref. No.	Part No.	Qty.	Description
10	63-2170-03	1	Cover-Lock, Lever
11	2210-250	3	Screw-HH
12	3290-320	2	Retainer-Push On
13	62-0300	1	Tang-Locking
14	88-0810	1	Spring-Extension
15	62-0290	1	Cam-Release
16	32151-66	1	E-Ring-Retainer
17	62-0280	1	Latch-Locking
18	63-2910	1	Spring-Torsion
19	62-1050-03	1	Lever-Traction, RH
20	66-7850	2	Grip-Handle
22	62-1070	2	Bushing-Lever
23	62-1640	1	Lever-Trip
25	100-3578	1	Control Panel ASM
25:2	99-3230	1	Decal-Top, Panel
25:3	100-3337	1	Decal - Panel Front
26	62-1490	1	Plate-Guide
27	63-2160	1	Crank-Rod, Chute
28	62-1320	1	Knob-Control, Chute
29	62-1520	1	Cover-Knob
32	63-3380	1	Spacer-Lever, Traction
33	3296-2	1	Nut-Lock
34	62-1060-03	1	Lever-Traction, LH
35	63-3050	1	Decal-Lever
36	32144-14	6	Screw-HWH

Ref. No.	Part No.	Qty.	Description
37	63-2030	1	Cross Rod ASM
38	3290-359	1	Screw-HWH
39	3256-14	2	Washer-Flat
40	32104-76	2	Screw
41	66-8091-03	1	LH Handle ASM
43	3290-378	2	Tie-Cable
44	94-6961	2	Screw
45	32121-50	2	Pin-Spring
46	62-1460	2	Gear-Universal
47	62-1230	1	Washer-Rubber
49	100-3597	1	Handle ASM
49:2	66-6860	1	Decal-Warning
50	3296-47	4	Nut-Lock, NI
53	63-2700	1	Cable-Impeller
54	63-2710	1	Cable-Traction

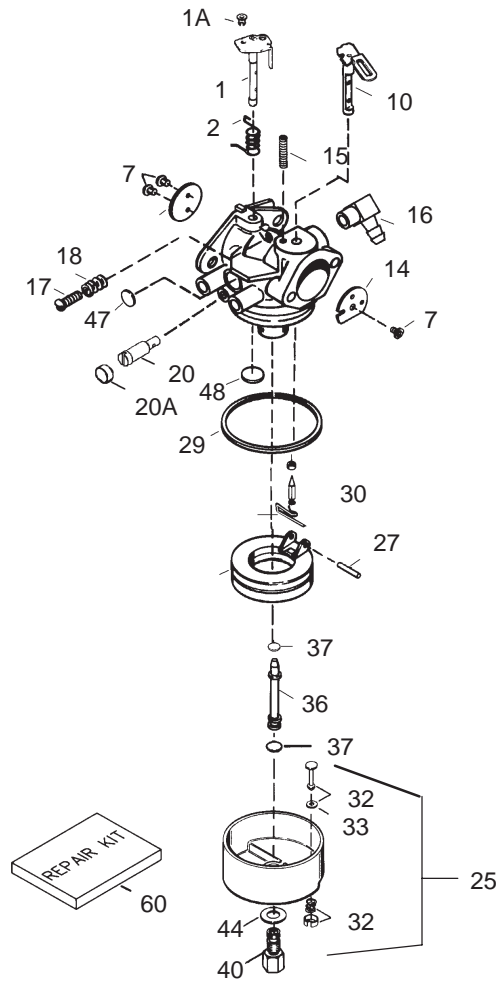


Sheet No.:6

## Lower Traction Assembly

Ref. No.	Part No.	Qty.	Description	Ref. No.	Part No.	Qty.	Description
1	3296-42	1	Nut-Lock, NI	29	62-1010	1	Guard-Chain, LH
2	63-2850	1	Idler Arm Bracket ASM	31	68-9310	1	Guard-Chain
3	3234-13	1	Screw-HHF	32	32121-9	2	Pin-Spring
4	3296-59	2	Nut-Lock, NI	33	3296-47	6	Nut-Lock, NI
5	93-8046	1	Impeller Idler Arm ASM	34	68-9270	1	Sprocket, 32 T
6	3-4244	2	Pulley-Idler	35	94-4496	3	Screw-PPH
7	323-7	2	Screw-HH	36	68-9200	1	Differential ASM
8	93-8045	1	Traction Idler Arm ASM	37	68-9250	1	Coupling-Differential
9	32120-46	2	Ring-Retaining	38	68-9260	1	Spring - Lockout
10	62-0970	1	Pin-Idler	39	95-7930	1	Spacer
11	63-2870	2	Spring-Extension	40	104-2065	1	Screw-HWH
12	3256-38	1	Washer-Flat	41	3257-41	2	Key-Woodruff
16	3296-39	2	Nut-Lock, NI	42		2	Wheel & Tire Assembly
17	3290-461	2	Washer-Spring	42:1	231-123	1	Tire
18	62-0470-03	1	Latch ASM	*42:2	232-48	1	Inner Tube
19	66-7720	1	Rod-Latch	42:3	241-127	1	Rim-Wheel
21	32144-4	2	Screw-HWH	43	3290-243	2	Pin-Lynch
22	3256-1	2	Washer-Flat	44	5-2490	2	Screw-Shoulder
23	62-1330	2	Bolt-Shoulder	45	63-2740	1	Spring-Latch, Torsion
24	3296-23	2	Nut-Lock, NI	46	3290-476	1	Fastener-Panel
25	63-3340	4	Washer-Support	47	3296-47	2	Nut-Lock, NI
26	252-80	4	Washer-Thrust	49	3234-7	2	Screw-HHF
27	66-7740	2	Pivot Arm ASM	50	66-8060	1	Pad-Brake
28	63-2250	2	Bushing-Axle	51	63-2820	1	Arm-Brake
				52	100-5474	1	Spring-Torsion

\* Not illustrated



Sheet No.:

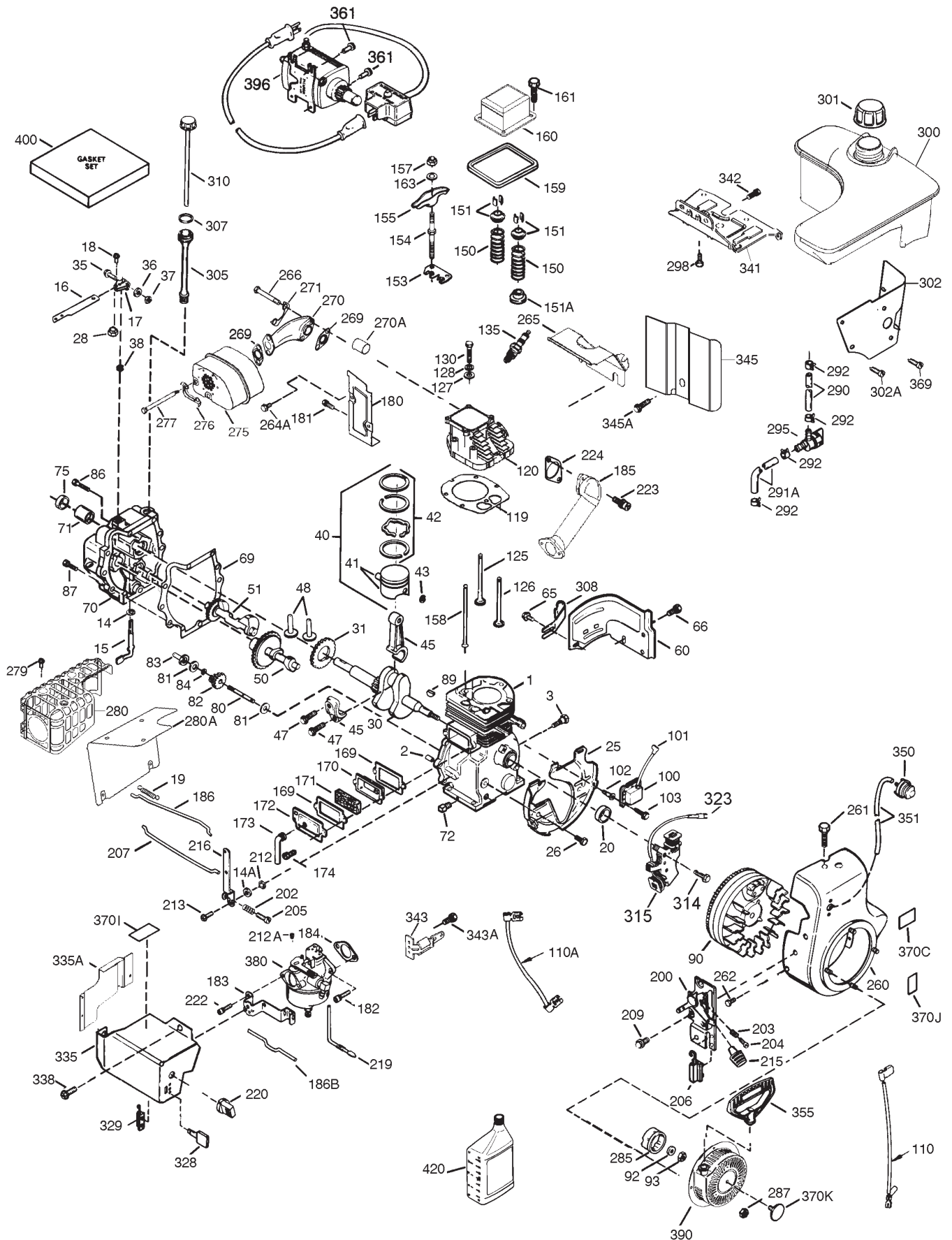
### Carburetor Part No. 640105

Ref. No.	Part No.	Qty.	Description
1	632787	1	Throttle Shaft & Lever ASM
1A	36288	1	Bushing
2	631970	1	Throttle Return Spring
6	640107	1	Throttle Shutter
7	650506	4	Shutter Screw
10	632513	1	Choke Shaft & Lever ASM
14	632429A	1	Choke Shutter
15	630735	1	Choke Positioning Spring
16	632527	1	Fuel Fitting
17	651025	1	Idle Speed Screw
18	630766	1	Tension Spring
20	640016	1	Idle Restrictor Screw
20A	640053	1	Idle Restrictor Screw Cap
25	632594A	1	Float Bowl ASM (Incl. 32 & 33)
27	631024	1	Float Shaft
28	632802	1	Float
29	631028	1	Float Bowl O-Ring
30	631021	1	Inlet Needle, Seat, Clip (Incl. 31)
31	631022	1	Spring Clip
32	27136	1	Bowl Drain ASM

Ref. No.	Part No.	Qty.	Description
33	27554	1	Drain Plunger Gasket
36	640005	1	Main Nozzle Tube
37	632547	2	O-Ring, Main Nozzle Tube
40	640106	1	High Speed Bowl Nut
44	27110A	1	Bowl Nut Washer
47	630748	1	Welch Plug, Idle Mixture Well
48	631027	1	Welch Plug, Vent
60	632760	1	Repair Kit

Obtain Parts from Local Tecumseh Dealer.

# Tecumseh Engine Assembly Model No. OHSK130-223818E



## Tecumseh Engine Assembly Model No. OHSK130-223818E

Ref. No.	Part No.	Qty.	Description	Ref. No.	Part No.	Qty.	Description
1	37083	1	Cylinder (Incl. 2, 20, 72 & 80)	71	35377	1	Crankshaft Bushing
2	27652	2	Dowel Pin	72	27642	1	Oil Drain Plug
3	650820	2	Screw, 1/4-20 x 1/2"	75	35319	1	Oil Seal
14	28277	1	Washer	80	35751	1	Governor Shaft
14A	651057	1	Washer	81	35479	2	Washer
15	35685	1	Governor Rod (Incl. 14 & 38)	82	35321	1	Governor Gear ASM
16	35686A	1	Governor Lever (Incl. 212A)	83	35322	1	Governor Spool
17	29916	1	Governor Lever Clamp	84	29193	1	Retaining Ring
18	651028	1	Screw - Torx T-15, 8-32 x 3/8"	86	650833	7	Screw, 1/4-20 x 1-3/16"
19	35688	1	Throttle Spring	87	650832	1	Screw, 1/4-20 x 1-11/16"
20	35319	1	Oil Seal	89	32589	1	Flywheel Key
25	36460	1	Blower Housing Baffle	90	611093	1	Flywheel (W/Ring Gear)
26	650561	2	Screw, 1/4-20 x 5/8"	92	650880	1	Lock Washer
28	30322	1	Lock Nut, 10-32	93	650881	1	Flywheel Nut
30	36706	1	Crankshaft	100	35135A	1	Solid State Ignition
31	35327	1	Counterbalance Gear	101	610118	1	Spark Plug Cover
35	29826	1	Screw, 10-32 x 3/4"	102	651024	2	Solid State Mounting Stud
36	29918	1	Lock Washer	103	651007	2	Screw - Torx T-15, 10-24 x 15/16"
37	29216	1	Lock Nut, 10-32	110	35187	1	Ground Wire
38	29642	3	Retaining Ring	110A	37047	1	Ground Wire
40	35776A	1	Piston, Pin & Ring Set (Std.)	119	36932	1	Cylinder Head Gasket
40	35777A	1	Piston, Pin & Ring Set (.010" OS)	120	37491	1	Cylinder Head (Incl. 151A)
40	35778A	1	Piston, Pin & Ring Set (.020" OS)	125	36934	1	Exhaust Valve (Std.)
41	35773A	1	Piston & Pin Ass'y (Std.) (Incl. 43)	125	36936	1	Exhaust Valve (1/32" OS)
41	35774A	1	Piston & Pin Ass'y (.010" OS) (Incl. 43)	126	36935	1	Intake Valve (Std.)
41	35775A	1	Piston & Pin Ass'y (.020" OS) (Incl. 43)	127	650691	6	Washer
42	35779	1	Ring Set (Std.)	128	650690	6	Belleville Washer
42	35780	1	Ring Set (.010" OS)	130	650697A	6	Screw, 5/16-18 x 2-1/2"
42	35781	1	Ring Set (.020" OS)	135	34645	1	Spark Plug (RN4C)
43	35772	2	Piston Pin Retaining Ring	150	33507	2	Valve Spring
45	36898	1	Connecting Rod ASM (Incl. 47)	151	33508	2	Valve Spring Keeper
47	651033	2	Connecting Rod Bolt	151A	35862	1	Intake Valve Seal
48	35313	2	Valve Lifter	153	35949	1	Push Rod Guide
50	35682A	1	Camshaft (MCR)	154	650945	2	Rocker Arm Stud
51	35315A	1	Counterbalance Weight	155	35950	2	Rocker Arm
60	35316A	1	Blower Housing Extension	157	650947	2	Jam Nut
65	30200	1	Screw, 10-24 x 9/16"	158	35466	2	Push Rod
66	30063	1	Screw - Torx T-30, 1/4-20 x 1/2"	159	35952	1	Rocker Arm Cover Gasket
69	35683	1	Cylinder Cover Gasket	160	35953A	1	Rocker Arm Cover
70	35684A	1	Cylinder Cover (Incl. 14, 15, 38, 71, 75)	161	30063	4	Screw - Torx T-30, 1/4-20 x 1/2"
				163	650890	2	Lock Washer
				169	27896A	2	Valve Cover Gasket
				170	28423	1	Breather Body
				171	28424	1	Breather Element
				172	28425	1	Valve Cover

Obtain Parts from Local Tecumseh Dealer.

## Tecumseh Engine Assembly Model No. OHSK130-223818E (continued)

Ref. No.	Part No.	Qty.	Description	Ref. No.	Part No.	Qty.	Description
173	35350	1	Breather Tube	290	30962	1	Fuel Line
174	650128	2	Screw, 10-24 x 1/2"	291	29774	1	Fuel Line
180	37101	1	Blower Housing Extension	292	26460	4	Fuel Line Clamp
181	30200	2	Lock Nut, 10-32	295	35857	1	Fuel Shut-Off Valve
182	650517	2	Screw - Torx T-30, 1/4-20 x 27/32	298	650665	2	Screw, 1/4-15 x 3/4"
183	34583A	1	Choke Bracket	300	37099	1	Fuel Tank (Incl. 292 & 301)
184	33263	1	Carb. To Intake Pipe Gasket	301	36246	1	Fuel Cap
185	37085	1	Intake Pipe	302	37098	1	Fuel Tank Extension
186	35691	1	Governor Link	302A	650821	3	Screw, 10-32 x 1/2"
186B	36653	1	Choke Spring	305	35574	1	Oil Fill Tube
200	35702	1	Control Bracket (Incl. 203 & 204)	307	35499	1	O-Ring
202	36482	1	Compression Spring	308	35539	1	Fill Tube Clip
203	31342	1	Compression Spring	310	35700	1	Dipstick
204	651029	1	Screw - Torx T-10, 5-40 x 7/16"	314	650873	1	Screw, 1/4-20 x 3/4"
205	651019	1	Screw - Torx T-10, 6-32 x 41/64"	315	611111	1	Alternator Coil (18 Watt) (Incl. 323)
206	610973	1	Terminal	322	611117	1	Connector Body
207	35692	1	Throttle Link	323	611118	1	Terminal
209	650821	2	Screw, 10-32 x 1/2"	328	35062	2	Ignition Keys
212	30773A	1	Bushing	329	610973	1	Terminal
212A	36288	1	Bushing	335	37096	1	Carburetor Cover
213	650930	1	Screw, 10-32 x 5/8"	335A	37087	1	Carburetor Cover
215	35438	1	Control Knob	338	650821	4	Screw, 10-32 x 1/2"
216	35679	1	R.P.M. Adjusting Lever	341	37093	1	Fuel Tank Bracket
219	35689	1	Choke Rod	342	792028	2	Screw, 5/16-18 x 7/8"
220	35440	1	Choke Knob	343	35079A	1	Key Switch Bracket
222	28820	2	Screw, 10-32 x 1/2"	343A	651060	1	Screw, 10-32 x 23/64"
223	650971	2	Screw - Torx T-30, 5/16-18 x 7/8"	345	37097	1	Heat Baffle
224	33515A	1	Intake Pipe Gasket	345A	650821	1	Screw, 10-32 x 1/2"
260	37092A	1	Blower Housing	350	570682A	1	Primer Assembly
261	650738	1	Screw, 1/4-20 x 5/8"	351	32180C	1	Primer Line
262	29747B	2	Screw - Torx T-40, 5/16-24 x 21/32"	355	590574	1	Starter Handle
264A	30063	1	Screw - Torx T-30, 1/4-20 x 1/2"	361	650990	2	Screw - Torx T-30, 1/4-20 x 15/32"
265	37086	1	Cylinder Head Cover	369	651032	2	Screw, 12-16 x 5/8"
266	650876	2	Screw, 5/16-18 x 1-9/32"	370C	36501	1	Primer Decal
269	35762	2	Exhaust Gasket	370I	37119	1	Warning Decal
270	37263	1	Manifold	370J	37226	1	Throttle Decal
270A	35829A	1	Exhaust Port Liner	370K	36695	1	Starter Decal
271	35293	1	Locking Plate (Manifold)	380	640105	1	Carburetor (Incl. 184)
275	37264	1	Muffler	390	590749	1	Rewind Starter (Note: This engine could have been built with 590733 starter.)
276	35348	1	Locking Plate	396	37105	1	Electric Starter Motor (110 Volt)
277	650877	2	Screw, 5/16-18 x 4-1/2"	400	36947B	1	Gasket Set
279	651011	4	Screw, 10-32 x 5/16"	420	730226A	1	SAE 5W30 4-Cycle Engine Oil (Quart)
280	37265	1	Heat Shield		758216	1	Shortblock
285	35985B	1	Starter Cup				
287	29752	4	Nut & Lock Washer, 1/4-28				

Obtain Parts from Local Tecumseh Dealer.









