



Quiet Collector Drive Kit
Wheel Horse[®] 5xi Garden Tractor Attachment
Model No. 79452—Serial No. 230000001 and Up

Operator's Manual



English (GB)

Contents

	Page
Introduction	2
Safety	3
Safety and Instruction Decals	3
Setup	4
Loose Parts	4
Preparing the Mower	4
Changing the Rear Leveling Shaft	4
Installing the Idler Pulley Assembly and Collector Drive Belt	5
Installing the Belt Cover	6
Installing the Boot	6

Introduction

Read this manual carefully to learn how to operate and maintain your product properly. The information in this manual can help you and others avoid injury and product damage. Although Toro designs and produces safe products, you are responsible for operating the product properly and safely.

Whenever you need service, genuine Toro parts, or additional information, contact an Authorized Service Dealer or Toro Customer Service and have the model and serial numbers of your product ready. Figure 1 illustrates the location of the model and serial numbers on the product.

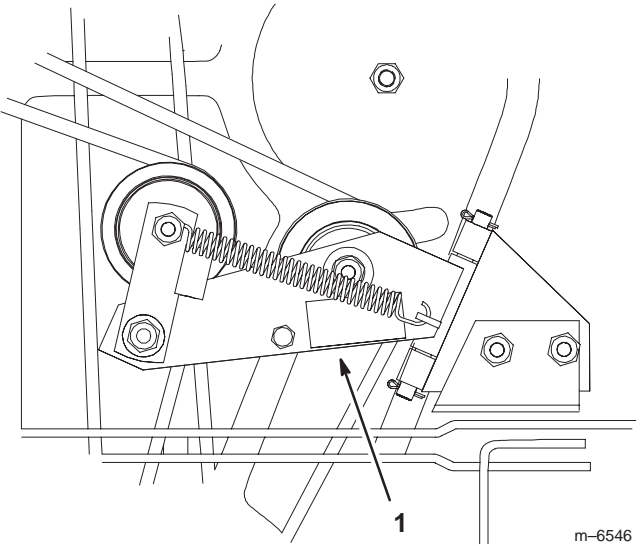


Figure 1

1. Location of the model and serial numbers

Write the product model and serial numbers in the space below:

Model No. _____

Serial No. _____

This manual identifies potential hazards and has special safety messages that help you and others avoid personal injury and even death. **Danger**, **Warning**, and **Caution** are signal words used to identify the level of hazard. However, regardless of the hazard, be extremely careful.

Danger signals an extreme hazard that *will* cause serious injury or death if you do not follow the recommended precautions.

Warning signals a hazard that *may* cause serious injury or death if you do not follow the recommended precautions.

Caution signals a hazard that may cause minor or moderate injury if you do not follow the recommended precautions.

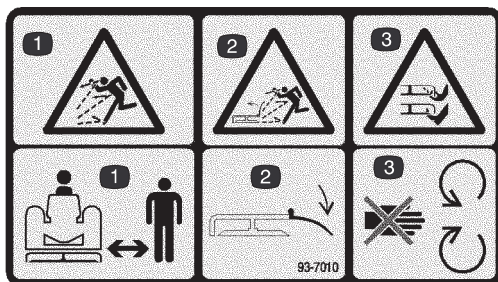
This manual uses two other words to highlight information. **Important** calls attention to special mechanical information and **Note:** emphasizes general information worthy of special attention.

The following list contains safety information specific to Toro products and other safety information you must know.

Safety and Instruction Decals



Safety decals and instructions are easily visible to the operator and are located near any area of potential danger. Replace any decal that is damaged or lost.



93-7010

1. Thrown object hazard—stay a safe distance from the machine.
 2. Thrown object hazard, mower—keep the deflector in place.
 3. Cutting/dismemberment of hand or foot—stay away from moving parts.
-

Setup

Note: Determine the left and right sides of the machine from the normal operating position.

Loose Parts

Note: Use the chart below to verify all parts have been shipped.

DESCRIPTION	QTY.	USE
Double pulley	1	Preparing the mower
Roll pin	2	Changing the rear leveling shaft
Idler pulley assembly	1	Installing the idler pulley assembly and collector drive belt
Collector drive belt	1	
Bolt, 1/4 x 1 inch	3	Installing the belt cover
Lock washer, 1/4 inch	3	
Flat washer, 5/16 inch	3	
Spacer	3	
Boot assembly	1	Installing the boot

Preparing the Mower

1. Remove the mower from the tractor. Refer to the mower operator's manual.
2. Remove the belt guard from the right side spindle (Fig. 2).
3. Remove the mower belt from the mower. Refer to the mower operator's manual.
4. Remove the right side spindle pulley (Fig. 2). Save the flat washer and nut.

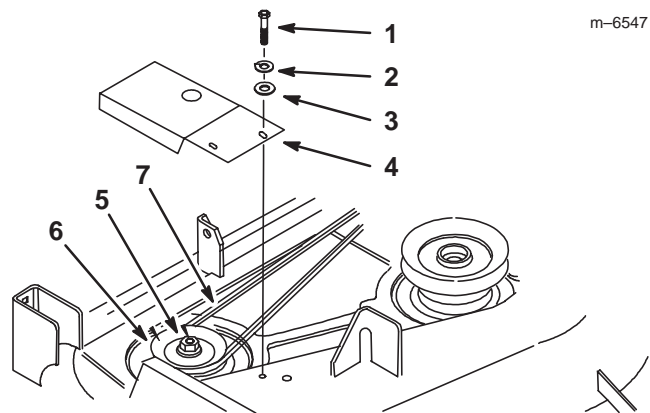


Figure 2

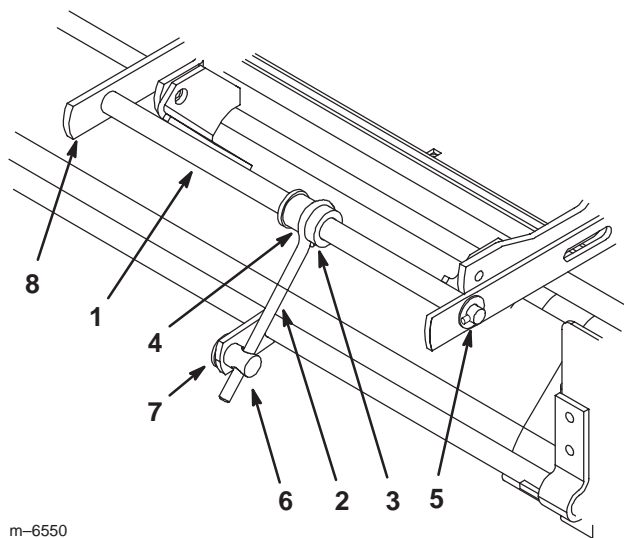
1. Bolt
2. Lock washer
3. Flat washer
4. Belt guard
5. Spindle nut
6. Spindle pulley—single pulley shown
7. Mower belt—on lower pulley

5. Install the double pulley onto the right side spindle with the previously removed flat washer and nut. Torque the nut to 80 to 100 ft-lb (109–136 N•m).
6. Install the mower belt. Ensure the belt is installed onto the lower right pulley (Fig. 2).

Changing the Rear Leveling Shaft

The rear leveling shaft needs to be flipped 180 degrees to allow space for the collector drive belt.

1. Remove the leveling shaft from the mower linkage by removing the roll pins and washers on **both** ends (Fig. 3).
2. Disconnect the trunnion and remove the rear adjustment rod from the mower (Fig. 3).
3. Remove the locking collar and rear adjustment rod from the leveling shaft (Fig. 3).
4. Flip the leveling shaft 180 degrees and install the spacer, rear adjustment rod, and locking collar onto the leveling shaft. See Figure 3 for the correct position.
5. Install the leveling shaft to the mower linkage with new roll pins and existing washers (Fig. 3).
6. Slide the locking collar against the spacer and rear adjustment rod and tighten locking collar (Fig. 3).
7. Install the rear adjustment rod on the opposite side of the gage wheel bracket with the trunnion, washer, and new cotter pin. See Figure 3 for the correct position.



m-6550

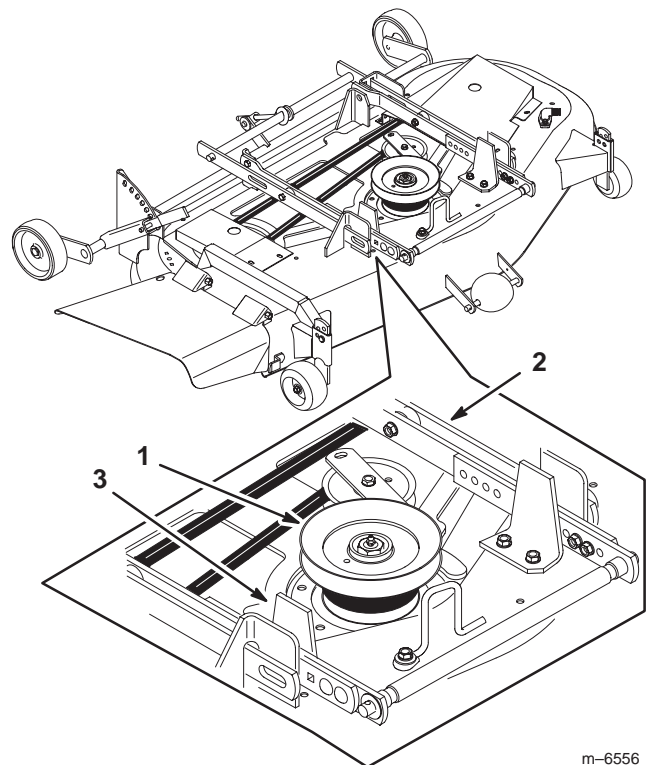
Figure 3

- | | |
|---------------------------------------|------------------------|
| 1. Leveling shaft—flipped 180 degrees | 5. Roll pin and washer |
| 2. Rear adjustment rod | 6. Trunnion |
| 3. Locking collar | 7. Gage wheel bracket |
| 4. Spacer | 8. Mower linkage |

Installing the Idler Pulley Assembly

1. Remove the right side bracket guide and save the hardware and bracket guide (Fig. 4).

2. Install the idler pulley assembly with the hinge plate under the bracket guide (Fig. 4). Secure with the nuts and bolts removed in step 1.



m-6556

Figure 4

- | | |
|-------------------|------------------------|
| 1. Center spindle | 3. Right bracket guide |
| 2. Mower linkage | |

Installing the Collector Drive Belt

3. Refer to the Quiet Collector operator's manual for installing the collector drive belt.

Installing the Belt Cover

Refer to the Quiet Collector operator's manual for installing the belt cover.

Installing the Boot

Refer to the Quiet Collector operator's manual for installing the boot.

