



Form No. 3469-379 Rev A

Count on it.

Parts Catalog

E-Z Vac™ Twin Bagger TITAN® Zero-Turn-Radius Riding Mower Model No. 79330—Serial No. 407000000 and Up



Ordering Replacement Parts

To order replacement parts, please supply the part number, the quantity, and the description of each part desired.

Understanding Reference Numbers

Each identified part in an illustration has a reference number. The reference number for a part also appears in the parts list, along with other information about the part.

This catalog uses two special reference number formats, one to indicate parts in a service assembly and another to indicate the quantity of a given part in an illustration.

Service Assembly Reference Numbers

Parts in service assemblies have reference numbers in the form a:b. The a represents the reference number of the entire service assembly and the b represents a sequential number unique to each part within the service assembly.

For example, a wheel assembly might be identified by reference number 6, the tire by 6:1, the valve by 6:2, and the wheel by 6:3. When you order the assembly identified by reference number 6, you receive all parts identified by reference numbers 6:1, 6:2, and 6:3. However, you may also order any part individually. Reference numbers of this type appear in illustration and in parts lists.

Reference Numbers Indicating Quantity

In an illustration, if a reference number indicates more than one part, the reference number has the form nX y. The n represents the quantity of the part, the X is the multiplication symbol, and the y represents the reference number.

For example, in an illustration, the reference number 2X 37 means that two of the parts identified by reference number 37 are indicated.

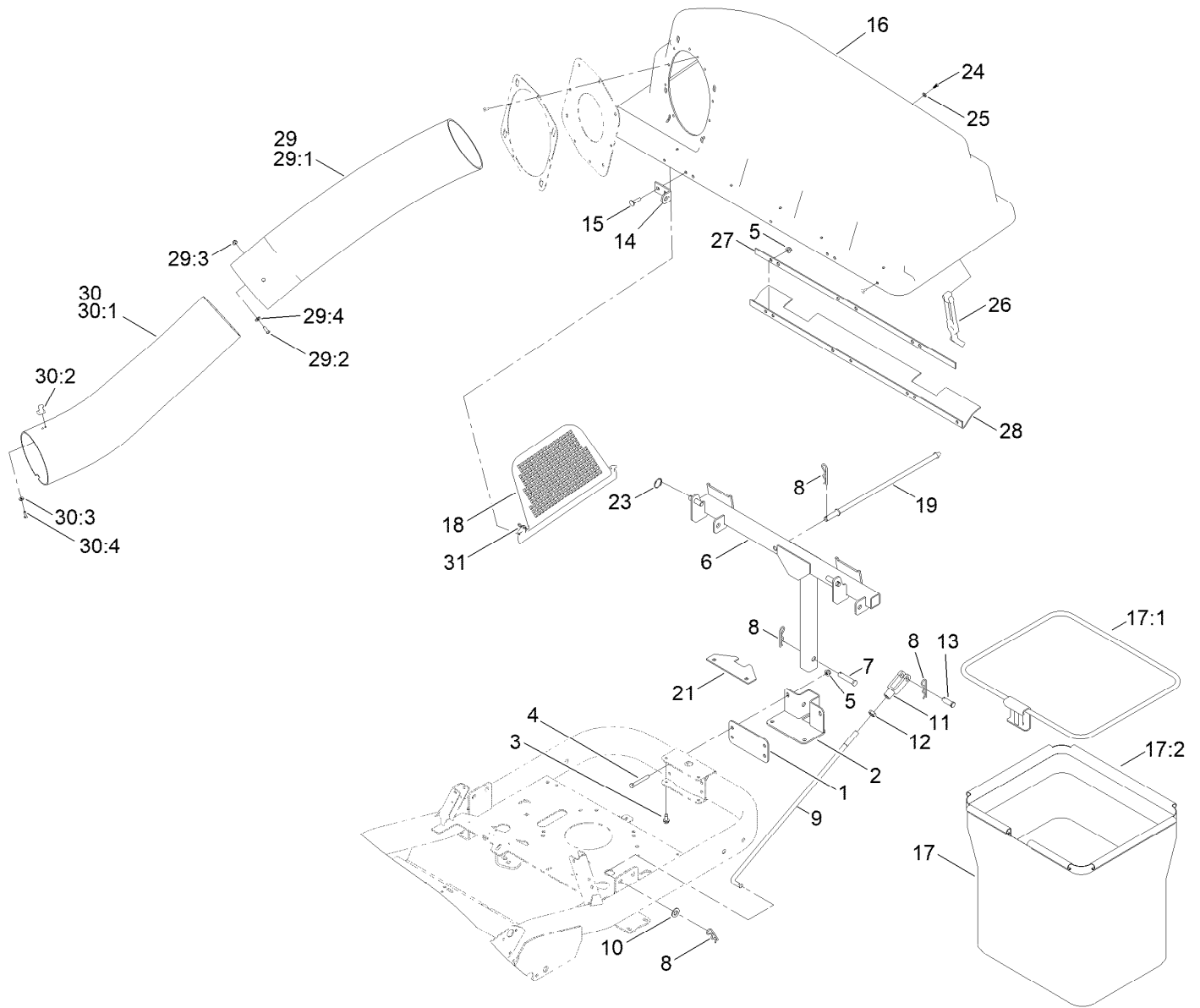
Contents

Twin Bagger and Hood Assembly 4

Weight Assembly 6

Bagger Hood Assembly No. 121-3215 8

Twin Bagger and Hood Assembly

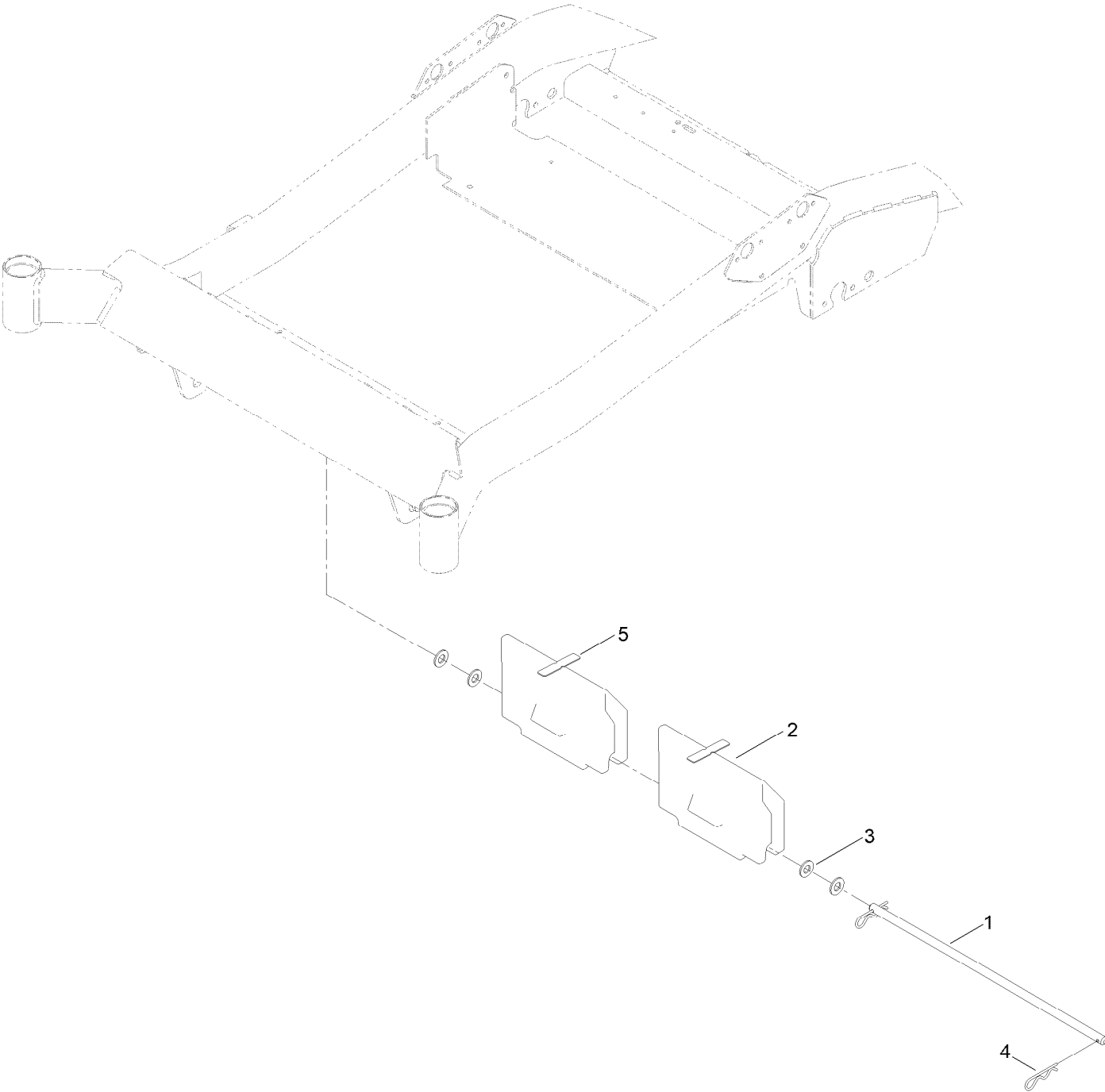


Twin Bagger and Hood Assembly (continued)

<i>Ref.</i>	<i>Part Number</i>	<i>Qty.</i>	<i>Description</i>	<i>Ref.</i>	<i>Part Number</i>	<i>Qty.</i>	<i>Description</i>
1	117-5355-03	1	Plate	19	116-6491	1	Rod-Hold Down, Hood
2	120-7120-03	1	Support-Bagger	21	117-5397-03	1	Plate-Spacer
3	32144-70	2	Screw-HWHTF	23	120-7127	1	Pin-Cotter, Circular
4	322-12	2	Screw-HH	24	107-7461	2	Screw-Plastite
5	104-8300	6	Nut-HF, NI	25	3256-77	2	Washer-Flat
6	125-1811-03	1	Pivot Frame ASM	26	127-0101	1	Latch-Rubber
7	92-2739	1	Pin-Clevis	27	116-4127-03	1	Plate-Backing
8	3290-355	6	Pin-Hair	28	116-4126	1	Seal
9	115-2645	2	Rod-Bagger	29	125-5464	1	Upper Tube ASM
10	3256-26	2	Washer-Flat	29:1	125-5568	1	Tube-Upper
11	100-7338	2	Clevis	29:2	3274-69	2	Screw-HSBH
12	3220-5	2	Nut-Jam	29:3	104-7201	2	Nut-HF, NI
13	104-3634	2	Pin-Clevis	29:4	3256-22	2	Washer-Flat
14	112-3987	2	Bracket-Pivot, Hopper	30	116-4128	1	Lower Tube ASM
15	3230-3	4	Screw-CARR	30:1	116-4495	1	Tube-Lower
16	121-3215	1	Bagger Hood ASM	30:2	103-4081	2	Latch-Keeper ●
17	147-2888	2	Bag ASM	30:3	3256-14	2	Washer-Flat
17:1	140-5179-03	1	Frame, Bag [black]	30:4	3290-500	2	Screw-PPH
17:2	140-5192	1	Bag ASM 20In Depth	31	3290-307	2	Pin-Cotter
18	112-3993	1	Screen-Bagger				

● Kit No. 103-4188 - Contains catch, rubber latch, and mounting hardware

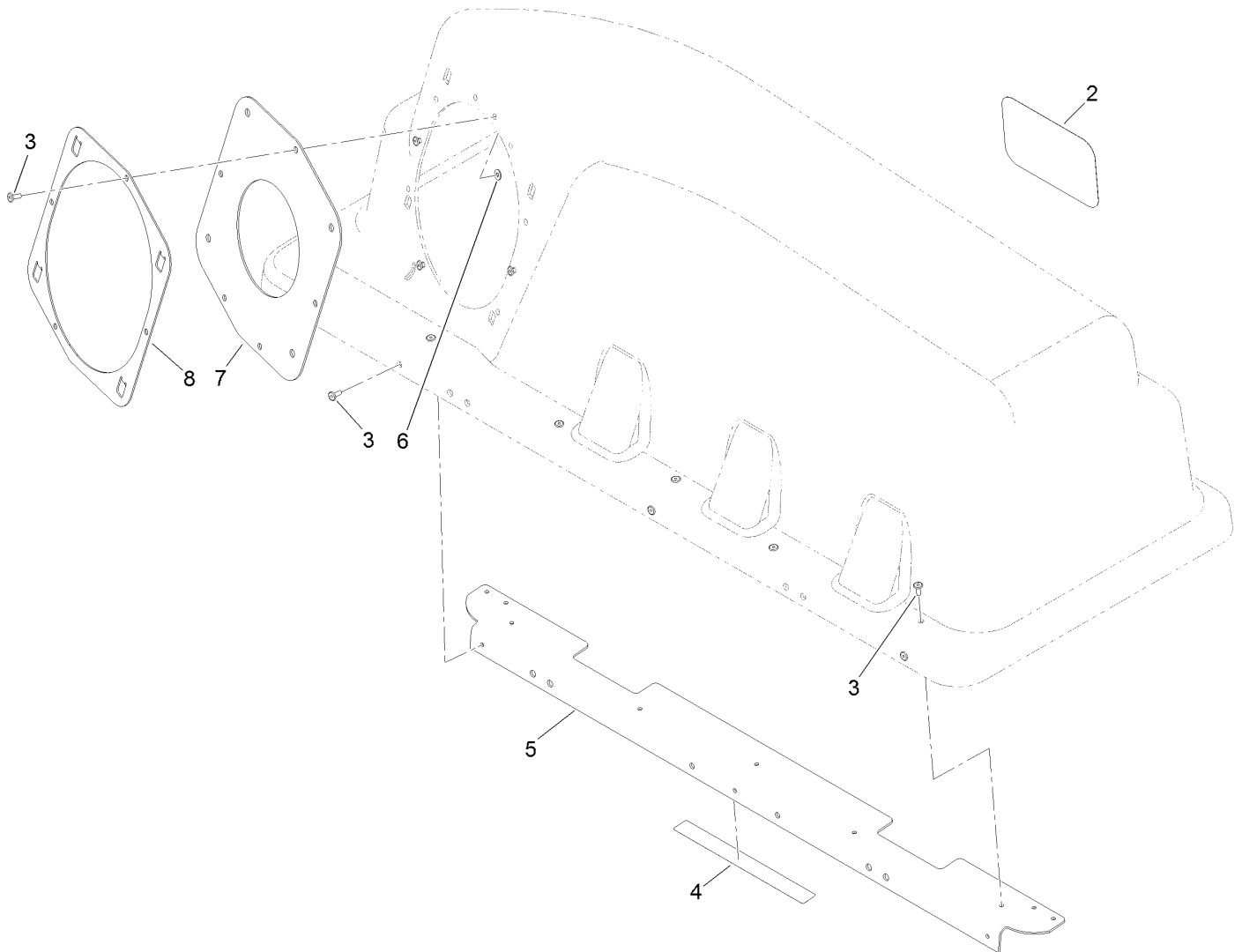
Weight Assembly



Weight Assembly (continued)

<i>Ref.</i>	<i>Part Number</i>	<i>Qty.</i>	<i>Description</i>	<i>Ref.</i>	<i>Part Number</i>	<i>Qty.</i>	<i>Description</i>
1	115-5030	1	Rod-Deck, Pivot	4	3290-355	2	Pin-Hair
2	115-9640-05	2	Weight-Bagger	5	112-4033	2	Bumper-Pad
3	3256-26	4	Washer-Flat				

Bagger Hood Assembly No. 121-3215



Bagger Hood Assembly No. 121-3215 (continued)

<i>Ref.</i>	<i>Part Number</i>	<i>Qty.</i>	<i>Description</i>
2	99-4693	1	Decal
3	114439	12	Rivet-Blind
4	109-6809	1	Decal-Caution, Bagger
5	116-5071-03	1	Stiffener-Bagger, Top

<i>Ref.</i>	<i>Part Number</i>	<i>Qty.</i>	<i>Description</i>
6	9202704	4	Washer-Flat
7	116-4478	1	Gasket
8	112-4000-03	1	Ring-Retainer

Notes:

Notes:



Count on it.