



36in/42in Rear Discharge Mower Conversion Kit

XT Series Garden Tractor

Part No. 106–8252

Parts Catalog

Ordering Replacement Parts

To order replacement parts, please supply: the part number, the quantity, and the description of each part desired.

Understanding Reference Numbers

Each identified part in an illustration has a reference number. The reference number for a part also appears in the parts list, along with other information about the part.

This catalog uses two special reference number formats, one to indicate parts in a service assembly and another to indicate the quantity of a given part in an illustration.

Service Assembly Reference Numbers

Parts in service assemblies have reference numbers in the form **a:b**. The **a** represents the reference number of the entire service assembly and the **b** represents a sequential number unique to each part within the service assembly.

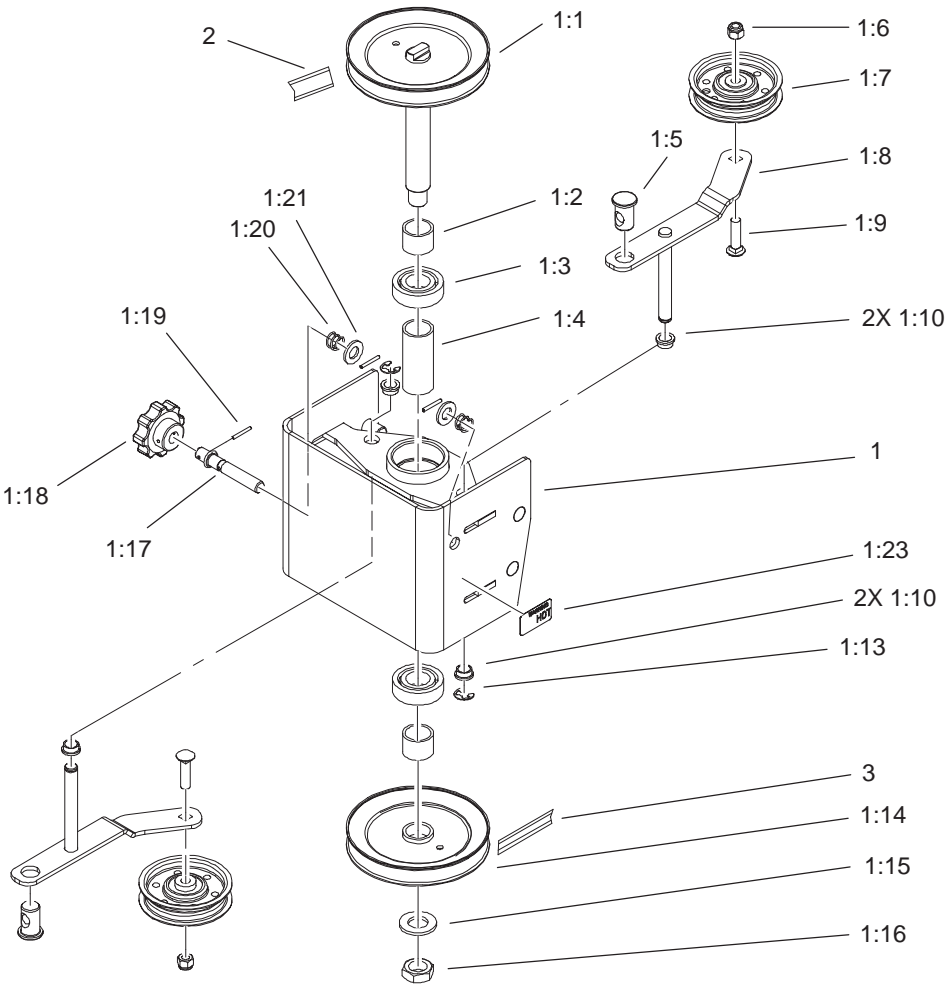
For example, a wheel assembly might be identified by reference number **6**, the tire by **6:1**, the valve by **6:2**, and the wheel by **6:3**. When you order the assembly identified by reference number **6**, you receive all parts identified by reference numbers **6:1**, **6:2**, and **6:3**. However, you may also order any part individually.

Reference numbers of this type appear in illustrations and in part lists.

Reference Numbers Indicating Quantity

In an illustration, if a reference number indicates more than one part, the reference number has the form **nX y**. The **n** represents the quantity of the part, the **X** is the multiplication symbol, and the **y** represents the reference number.

For example, in an illustration, the reference number **2X 37** means that two of the parts identified by reference number **37** are indicated.



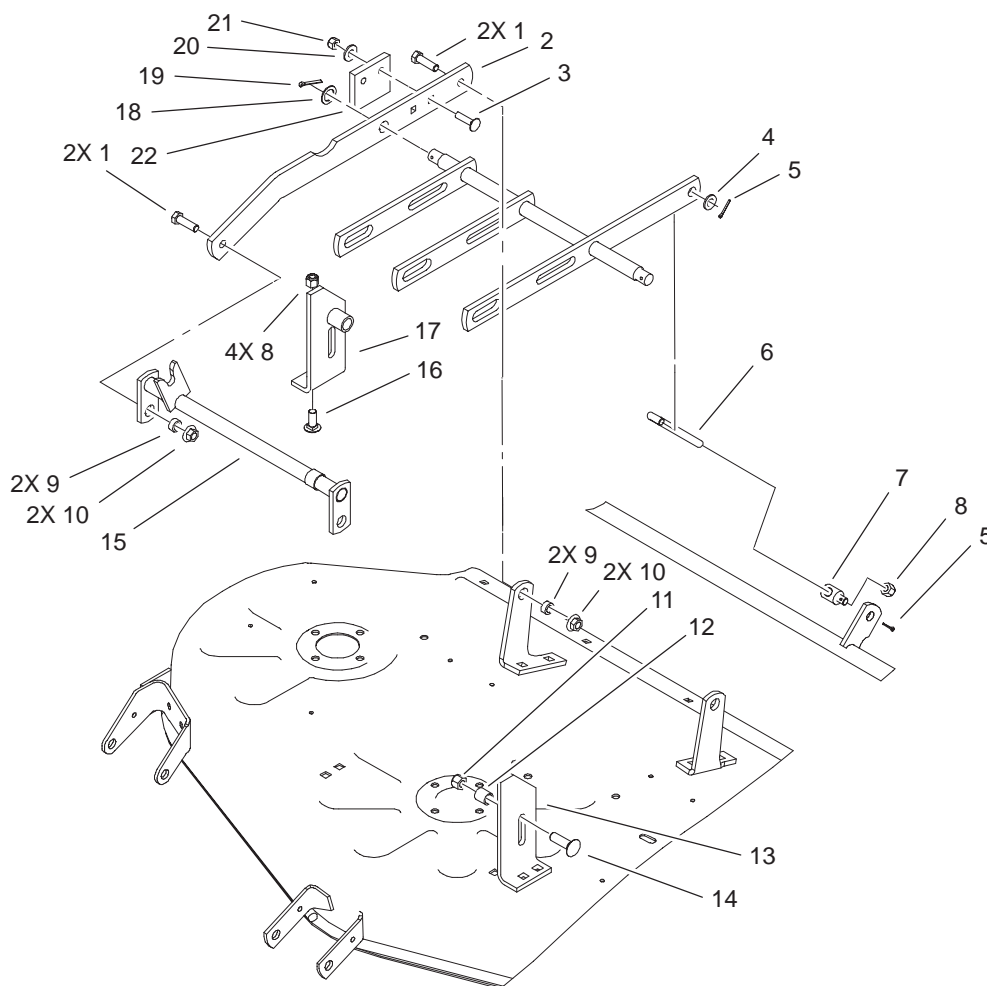
Sheet No.:2

Pulley Box Assembly

Ref. No.	Part No.	Qty.	Description
1	106-5562	1	Pulley Box ASM
1:1	106-5625	1	Upper Pulley ASM
1:2	106-5634	2	Spacer-Pulley
1:3	251-82	2	Bearing-Ball
1:4	106-5633	1	Spacer-Bearing
1:5	105-1397	2	Ferrule-Adjuster
1:6	3296-22	2	Nut-Lock NI
1:7	92-7101	2	Pulley-Flat Idler
1:8	106-5636	2	Idler Arm ASM
1:9	3231-4	2	Screw-CARR
1:10	256-156	4	Bushing-Flange
1:13	32120-47	2	Ring-Retaining, External
1:14	106-5627	1	Lower Pulley ASM
1:15	3256-28	1	Washer-Flat
1:16	3220-7	1	Nut-Jam
1:17	106-4024	2	Rod-Tension
1:18	105-1492	2	Knob-Adjusting
1:19	933156	4	Pin-Spirol, Roll
1:20	106-9892	2	Spring-Compression
1:21	106-9888	2	Washer-Flat
1:23	65-2690	2	Decal-Surface, Hot
2	106-5631	1	Belt-PTO,Xt
3	106-9897	1	Belt-Drive (42 Rd Conversion)

Ref. No.	Part No.	Qty.	Description
*4	106-9910	1	Belt-Drive (36 Rd Conv.)

* Not illustrated



Sheet No.:3

Deck Mounting Assembly

Ref. No.	Part No.	Qty.	Description
1	323-7	4	Screw-HH
2	106-5641-03	2	Bar-Draft
3	3230-3	4	Screw-CARR
4	3256-24	1	Washer-Flat
5	3272-6	2	Pin-Cotter
6	106-9881	1	Rod-Adjusting,(36/42 in Rd Conversion)
7	6739	1	Trunnion-Lift
8	3296-39	5	Nut-Lock, NI
9	114127	4	Spacer
10	32128-19	4	Nut-HF
11	3296-48	2	Nut-Lock, NI
12	9793604	2	Spacer
13	106-9901-03	1	Bracket-Front Deck, RH
14	3232-3	2	Screw-CARR
15	106-5644-03	1	Hitch ASM
16	3231-2	4	Screw-CARR
17	106-9900-03	1	Bracket-Front Deck, LH
18	3256-69	2	Washer-Flat
19	3272-12	2	Pin-Cotter
20	3256-3	4	Washer-Flat
21	3296-29	4	Nut-Lock, NI
22	102322	2	Bumper

Ref. No.	Part No.	Qty.	Description

