



Light Kit

TimeCutter® Z Riding Mower

Part No. 106-2245

Form No. 3329-506

Installation Instructions

Note: This kit is for the TimeCutter Z Model 74350 only.

Loose Parts

Note: Use the chart below to identify parts used for assembly.

Description	Qty.	Use
Light assembly	1	Installing the light assembly
Wire harness	1	Installing the wire harness
Fuse	1	Installing the fuse

Drilling Holes for the Wire Harness

There are two holes to drill for installing the wire harness. One is located in the front and the other on the right side of the frame.

1. In the front of the machine, measure 7-1/2 inches (19 cm) over from the right adjusting nut and up 1-1/4 inches up from the mower frame (Fig. 1).

Note: The hole will be centered between the two adjusting nuts.

2. Mark the location and drill a 1/4 inch dia. hole in the front of the machine (Fig. 1).
3. Remove any burrs from the drilled hole on both sides of the frame (Fig. 1).

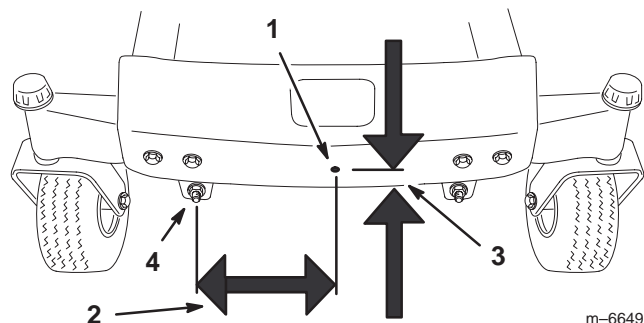


Figure 1

1. 1/4 inch hole to drill
2. 7-1/2 inches (19 cm)
3. 1-1/4 inches (32 mm)
4. Right adjusting nut

4. Locate the hole on the right side of the machine by measuring 3 inches (76 mm) over and 1-1/2 inches (38 mm) up as shown in Figure 3.
5. Mark the location and drill a 1/4 inch dia. hole in the side of the machine (Fig. 1).
6. Remove any burrs from the drilled hole on both sides of the frame (Fig.).

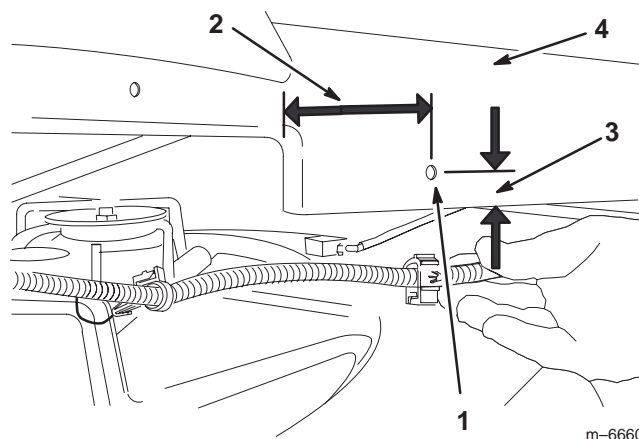


Figure 2

1. 1/4 inch hole to drill
2. 3 inches (76 mm)
3. 1-1/4 inches (32 mm)
4. Right side of the machine

Installing the Light Assembly

1. Remove the two bolts, washers, and locknuts that are on the front of the machine and farthest to the outside (Fig. 3).

2. Attach the light bracket to the front of the mower with the bolts, washers, and nuts removed in step 1 (Fig. 3).

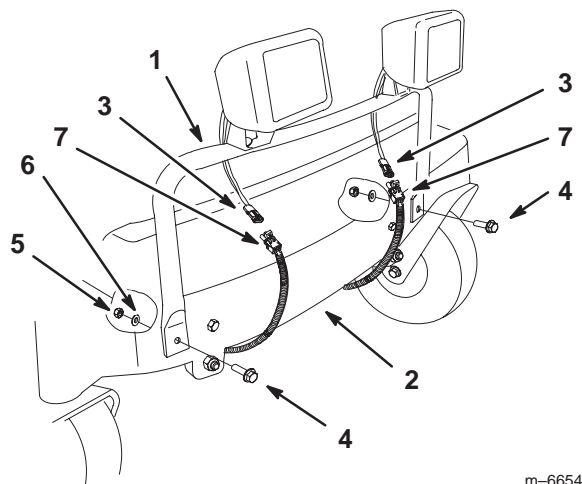


Figure 3

- | | |
|--------------------|-----------------|
| 1. Light assembly | 5. Locknut |
| 2. Mower | 6. Washer |
| 3. Light connector | 7. Wire harness |
| 4. Bolt | |

Installing the Switch

1. Remove the plug in the control panel.
2. Install the light switch into the control panel (Fig. 4).

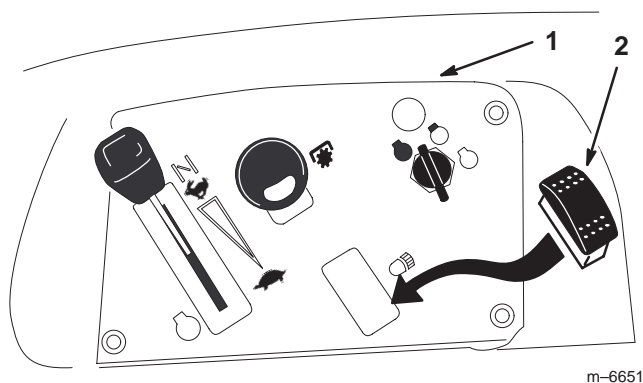


Figure 4

- | | |
|------------------|-----------------|
| 1. Control panel | 2. Light switch |
|------------------|-----------------|

Installing the Wire Harness

1. Route the wire harness under the foot rest and above the support rods (Fig. 5).
2. Connect the two head light connectors to the wire harness (Fig. 3).
3. Install the wire harness clip into the hole in the front of the machine (Fig. 5)

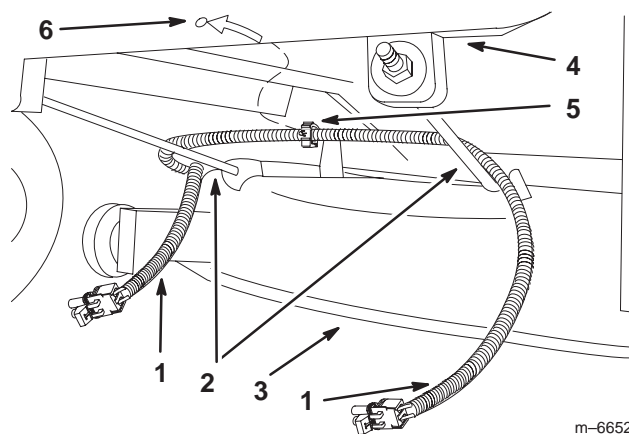


Figure 5

- | | |
|-----------------|--------------------------|
| 1. Wire harness | 4. Footrest |
| 2. Support rods | 5. Harness clip |
| 3. Mower | 6. Hole drilled in front |

4. Route the harness along the right side of the footrest and under the height-of-cut lever (Fig. 6).
5. Install the wire harness clips into the holes in the side of the frame (Figures 6 and 7).

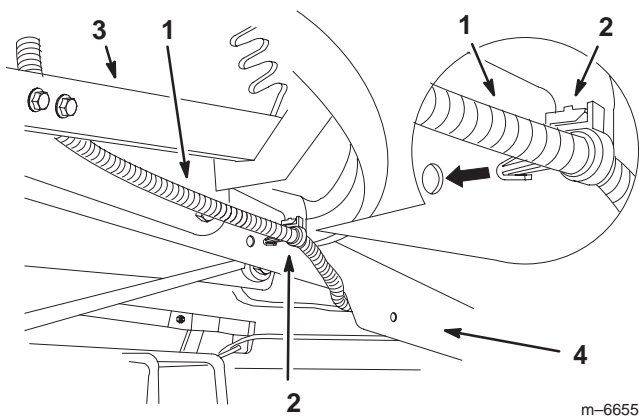


Figure 6

- | | |
|-----------------|---------------------------|
| 1. Wire harness | 3. Height-of-cut lever |
| 2. Harness clip | 4. Right side of footrest |

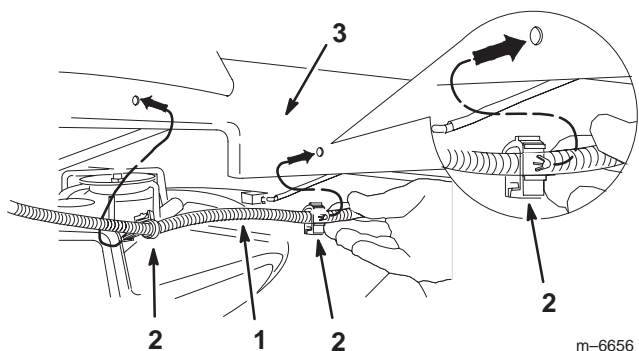


Figure 7

- | | |
|-----------------|---------------------------|
| 1. Wire harness | 3. Right side of footrest |
| 2. Harness clip | |

- Line up the light wire harness connector with the light switch (Fig. 8).

Important Make sure the round post on switch lines up with hole in harness connector (Fig. 8).

Important Make sure the extended tab lines up with the square hole in the switch (Fig. 8).

- Install the light switch connector to the light switch (Fig. 8).
- Install the power terminal from the main harness into the light power connector in the light harness (Fig. 8).

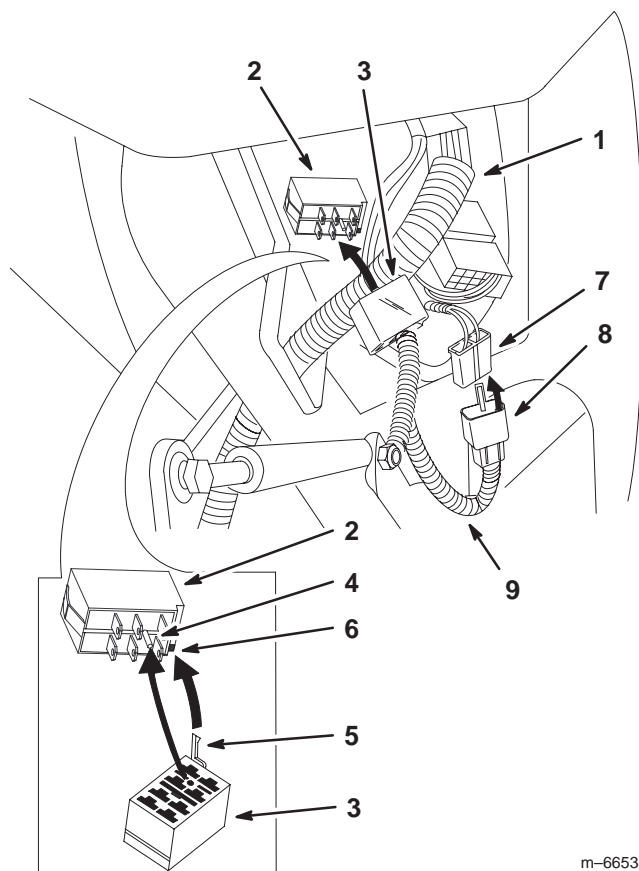
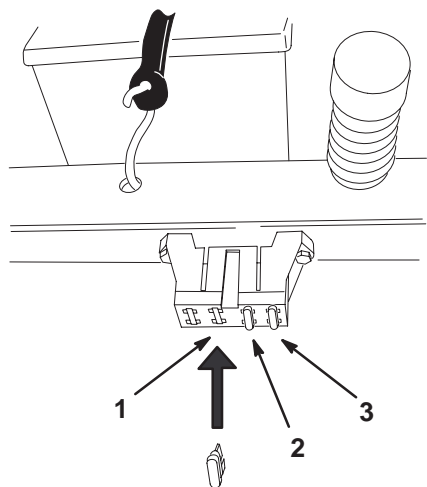


Figure 8

- | | |
|---------------------------|--------------------------|
| 1. Wire harness | 6. Square hole in switch |
| 2. Light switch | 7. Power terminal |
| 3. Light switch connector | 8. Light power connector |
| 4. Round post | 9. Light wire harness |
| 5. Extended tab | |

Installing the Fuse

1. Install the 10 amp fuse into the empty slot next to the 25 amp fuse in fuse block, as shown in Figure 9.



m-6648

Figure 9

- | | |
|-----------------------------|----------------|
| 1. Install 10 amp fuse here | 3. 30 amp fuse |
| 2. 25 amp fuse | |
-