



## Z287L

### Z Master<sup>®</sup> with 72in SFS Side Discharge Mower

Model No. 74214—230006001 and Up

## Parts Catalog

### Ordering Replacement Parts

To order replacement parts, please supply: the part number, the quantity, and the description of each part desired.

### Understanding Reference Numbers

Each identified part in an illustration has a reference number. The reference number for a part also appears in the parts list, along with other information about the part.

This catalog uses two special reference number formats, one to indicate parts in a service assembly and another to indicate the quantity of a given part in an illustration.

### Service Assembly Reference Numbers

Parts in service assemblies have reference numbers in the form **a:b**. The **a** represents the reference number of the entire service assembly and the **b** represents a sequential number unique to each part within the service assembly.

For example, a wheel assembly might be identified by reference number **6**, the tire by **6:1**, the valve by **6:2**, and the wheel by **6:3**. When you order the assembly identified by reference number **6**, you receive all parts identified by reference numbers **6:1**, **6:2**, and **6:3**. However, you may also order any part individually.

Reference numbers of this type appear in illustrations and in part lists.

### Reference Numbers Indicating Quantity

In an illustration, if a reference number indicates more than one part, the reference number has the form **nX y**. The **n** represents the quantity of the part, the **X** is the multiplication symbol, and the **y** represents the reference number.

For example, in an illustration, the reference number **2X 37** means that two of the parts identified by reference number **37** are indicated.

## Contents

<b>Description</b>	<b>Page</b>	<b>Description</b>	<b>Page</b>
Front Frame Assembly .....	4	Cylinder/Crankcase Assembly	
Caster and Wheel Assembly .....	5	Kawasaki FD750D–AS03 .....	27
Main Frame Assembly .....	6	Piston/Crankshaft Assembly	
Brake and Wheel Hub Assembly .....	7	Kawasaki FD750D–AS03 .....	28
Steering Controls Assembly .....	8	Valve/Camshaft Assembly	
Hydraulic System Assembly .....	9	Kawasaki FD750D–AS03 .....	29
Seat Assembly .....	11	Lubrication Equipment Assembly	
Seat Assembly No. 99–8522 .....	12	Kawasaki FD750D–AS03 .....	30
Deck Connection Assembly .....	13	Cooling Equipment Assembly	
Drive Idler Assembly .....	14	Kawasaki FD750D–AS03 .....	31
Z Stand <sup>®</sup> Assembly .....	15	Electric Equipment Assembly	
Engine, Clutch and Air Cleaner Assembly .....	16	Kawasaki FD750D–AS03 .....	32
Cooling System Assembly .....	17	Control Equipment Assembly	
Hood Assembly .....	18	Kawasaki FD750D–AS03 .....	33
Cooling Mounting Frame Assembly .....	19	Carburetor Assembly	
Fuel System Assembly .....	20	Kawasaki FD750D–AS03 .....	34
Electrical System Assembly .....	21	Air Filter/Muffler Assembly	
Deck and Wheel Gage Assembly .....	22	Kawasaki FD750D–AS03 .....	35
Deck Assembly No. 105–1698 .....	23	Fuel Tank/Fuel Valve Assembly	
Spindle and Pulley Assembly .....	24	Kawasaki FD750D–AS03 .....	36
Belt and Idler Arm Assembly .....	25	Starter Assembly	
Electrical Schematic .....	26	Kawasaki FD750D–AS03 .....	37

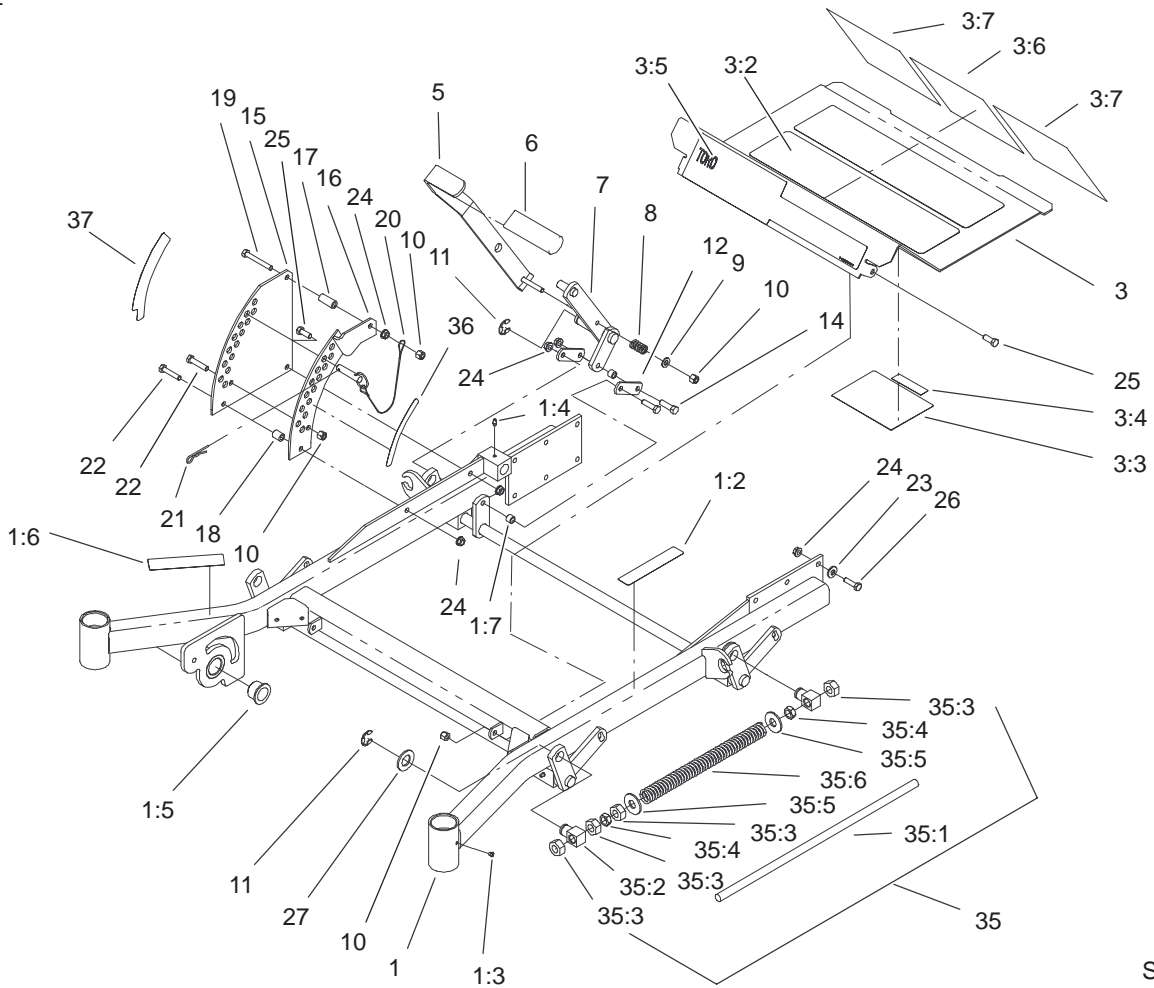
## Accessories

<b>Description</b>	<b>Model / Part No.</b>	<b>Description</b>	<b>Model / Part No.</b>
Striping Kit .....	30163	Z Recycler Kit .....	100–9678
Hitch Kit .....	99–8925	ROPS .....	TORO Dealer
Atomic Blade .....	104–1304		

## Part Description Abbreviations

Part descriptions in this catalog may include the following abbreviations.

<b>Abbreviation</b>	<b>Meaning</b>	<b>Abbreviation</b>	<b>Meaning</b>
AR .....	as required	HYD .....	hydraulic
ASM .....	assembly	INC .....	incorporated
CARR .....	carriage	LH .....	left hand
DEG .....	degrees	NI .....	nylon insert
FH .....	flat head	PPH .....	Phillips pan head
GA .....	gauge	PTH .....	Phillips truss head
HF .....	hex flange	PTO .....	power take off
HH .....	hex head	RH .....	right hand
HHF .....	hex head flange	SFH .....	slotted fillister head
HLH .....	hex lag head	SHH .....	slotted hex head
HJ .....	hex jam	SQH .....	square head
HOC .....	height-of-cut	SHWH .....	slotted hex washer head
HS .....	hex socket	SPH .....	slotted pan head
HSBH .....	hex socket button head	SRH .....	slotted round head
HSFH .....	hex socket flat head	STD .....	standard
HSH .....	hex socket head	TAP .....	self tapping
HWH .....	hex washer head	TTH .....	Torx truss head
HWHTF .....	hex washer head thread forming	WH .....	wing head



Sheet No.:2

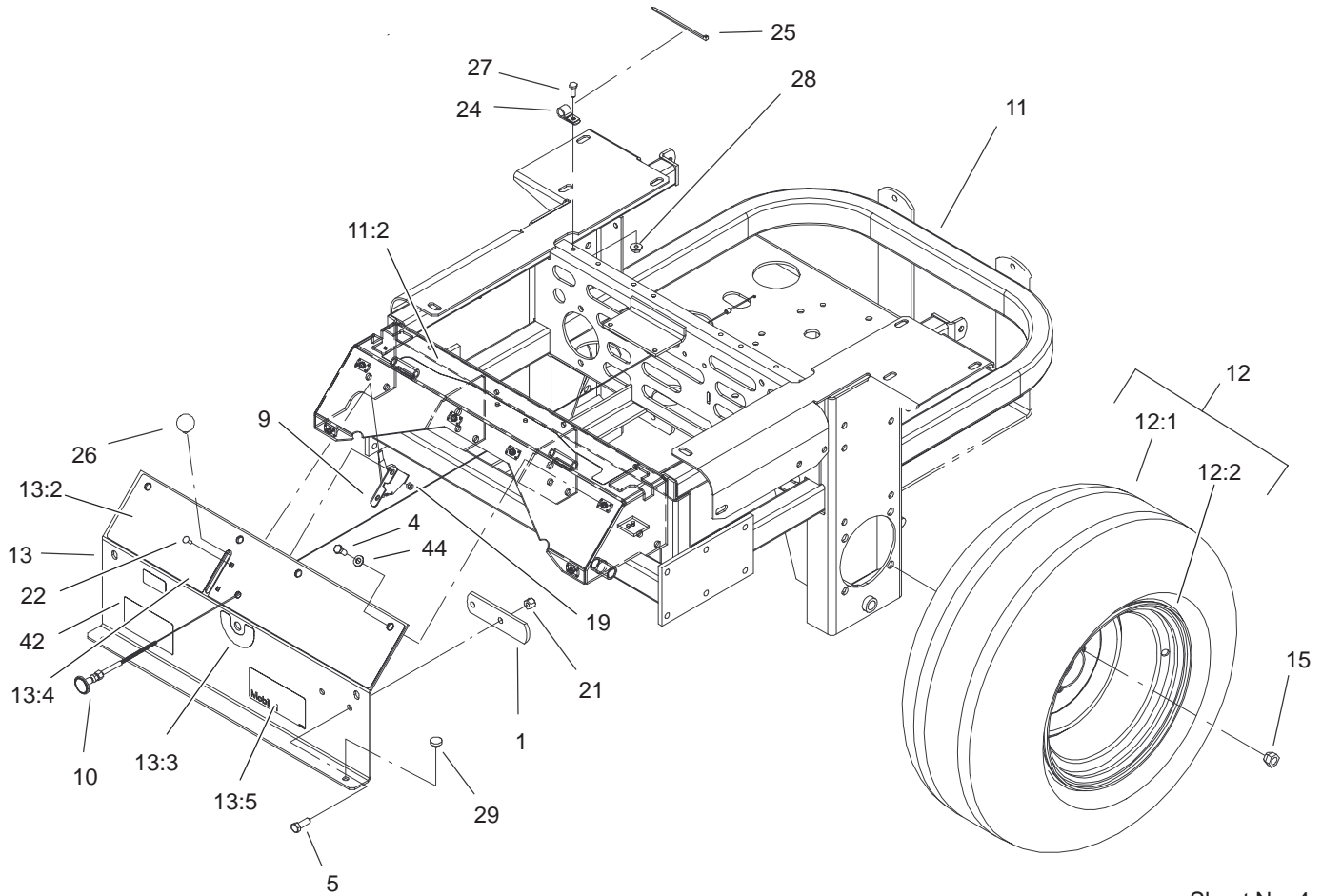
## Front Frame Assembly

Ref. No.	Part No.	Qty.	Description
1	104-5133	1	Frame ASM
1:2	1-633818	1	Decal-Warning
1:3	1-811010	2	Plug
1:4	302-19	5	Fitting-Grease
1:5	94-1291	2	Bushing-Special
1:6	104-7759	1	Decal-Warning
1:7	103-1918	1	Bushing
3	106-6587	1	Floorpan ASM
3:2	1-633553	2	Pad-Antiskid
3:3	1-633766	1	Decal-Check
3:4	98-5954	1	Decal-Missing, Cover
3:5	1-633737	1	Decal-Z Master
3:6	106-6571	1	Decal - Danger, Slope
3:7	106-6572	2	Pad, Anti Skid
5	103-2083-03	1	Lever-Lift
6	1-633295	1	Grip-Lever, Lift
7	103-2064-03	1	Arm-Lift, Deck
8	1-633325	1	Spring-Compression
9	3256-24	1	Washer-Flat
10	3296-39	5	Nut-Lock, NI
11	32151-103	5	Ring-Snap
12	1-633068	2	Arm-Lift, Deck
14	323-29	2	Screw-HH
15	1-633889-01	1	Plate-Lift, Deck
16	1-632899-01	1	Plate-Lift, Deck
17	1-633082	1	Bushing-Lever, Lift

Ref. No.	Part No.	Qty.	Description
18	1-633080	1	Bushing-Lever, Lift
19	323-13	1	Screw-HH
20	1-633097	1	Pin-Hitch W/Lanyard
21	1-806005	1	Pin-Hair
22	323-9	2	Screw-HH
23	98-5975	12	Washer-Belleville
24	3290-357	17	Nut-HHF
25	323-6	3	Screw-HH
26	323-7	12	Screw-HH
27	3256-29	4	Washer-Flat
☆35		2	Front Frame Spring ASM
35:1	1-633096	1	Rod-Lift, Deck
35:2	1-633441	2	Swivel-Deck Mount, Rear
35:3	3217-11	4	Nut-Hex
35:4	3218-6	2	Nut-Jam
35:5	3256-7	2	Washer-Flat
35:6	1-633064	1	Spring-Support, Deck
36	1-633706	1	Decal-Height, Deck
37	1-633345	1	Decal-Height, Deck

☆ Not serviced separately



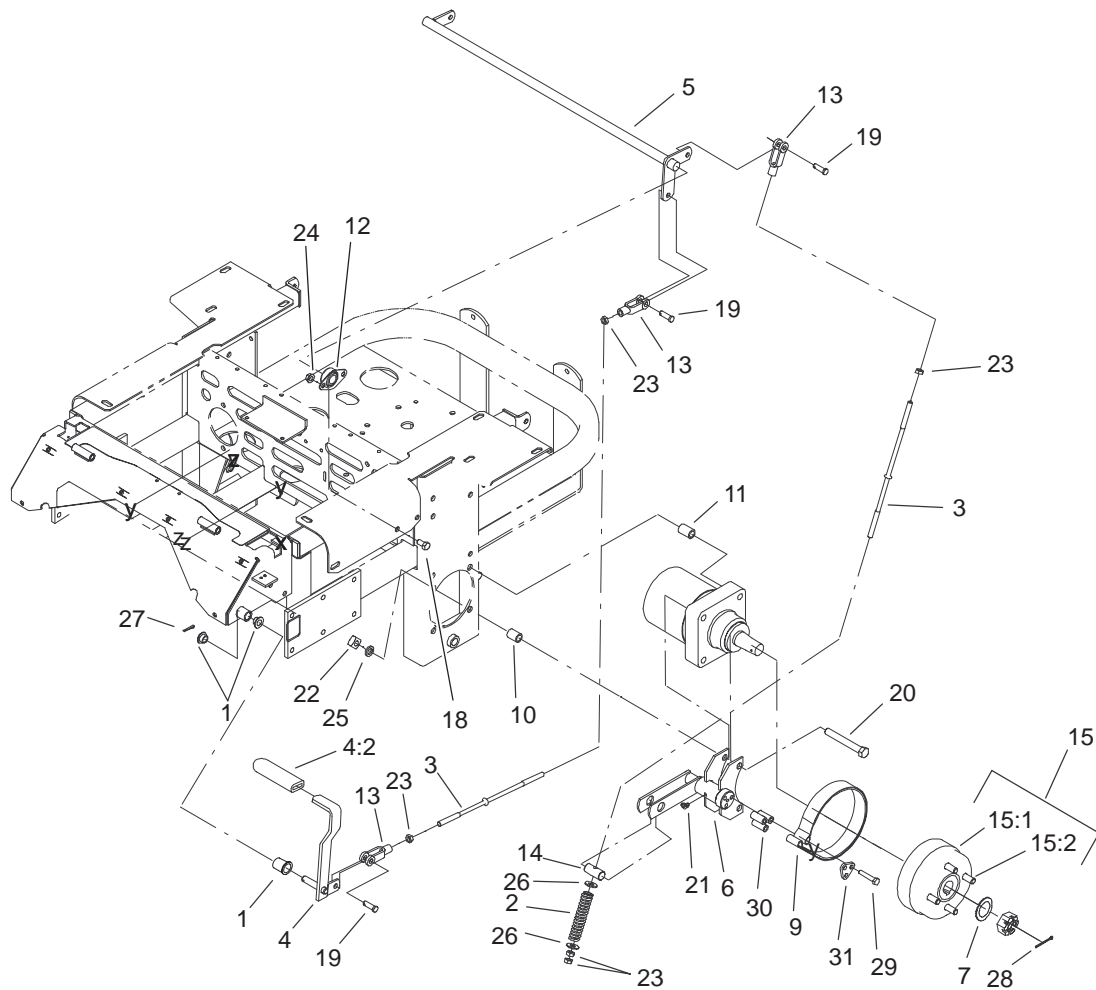


Sheet No.:4

## Main Frame Assembly

Ref. No.	Part No.	Qty.	Description
1	1-633964-03	1	Stop-Brake, Park
4	322-3	6	Screw-HH
5	323-6	2	Screw-HH
9	1-633696	1	Cable-Throttle
10	1-603336	1	Control-Choke
11	105-3648	1	Main Frame ASM
11:2	103-2433	1	Decal-Console, Top
12	1-633970	2	Wheel And Tire ASM
12:1	1-633993	1	Tire
12:2	1-633992	1	Wheel
13	106-6584	1	Console ASM
13:2	106-6570	1	Decal-Control Panel
13:3	103-0262	1	Decal-Valve, Fuel
13:4	98-4387	1	Decal-Protection, Ear
13:5	104-8172	1	Decal-Mobil 1
15	242-50	8	Nut-Lug
19	3296-2	2	Nut-Lock
21	3296-39	2	Nut-Lock, NI
22	1-807513	2	Bolt-CARR
24	1-513762	1	Clip-Loom
25	1-303335	1	Tie-Plastic
26	1-513592	1	Knob-Ball
27	321-4	1	Screw-HH
28	32128-33	1	Nut-HF
29	1-513658	2	Bumper-Catcher, Grass

Ref. No.	Part No.	Qty.	Description
42	104-7787	1	Decal-Z287I
44	3256-23	6	Washer-Flat

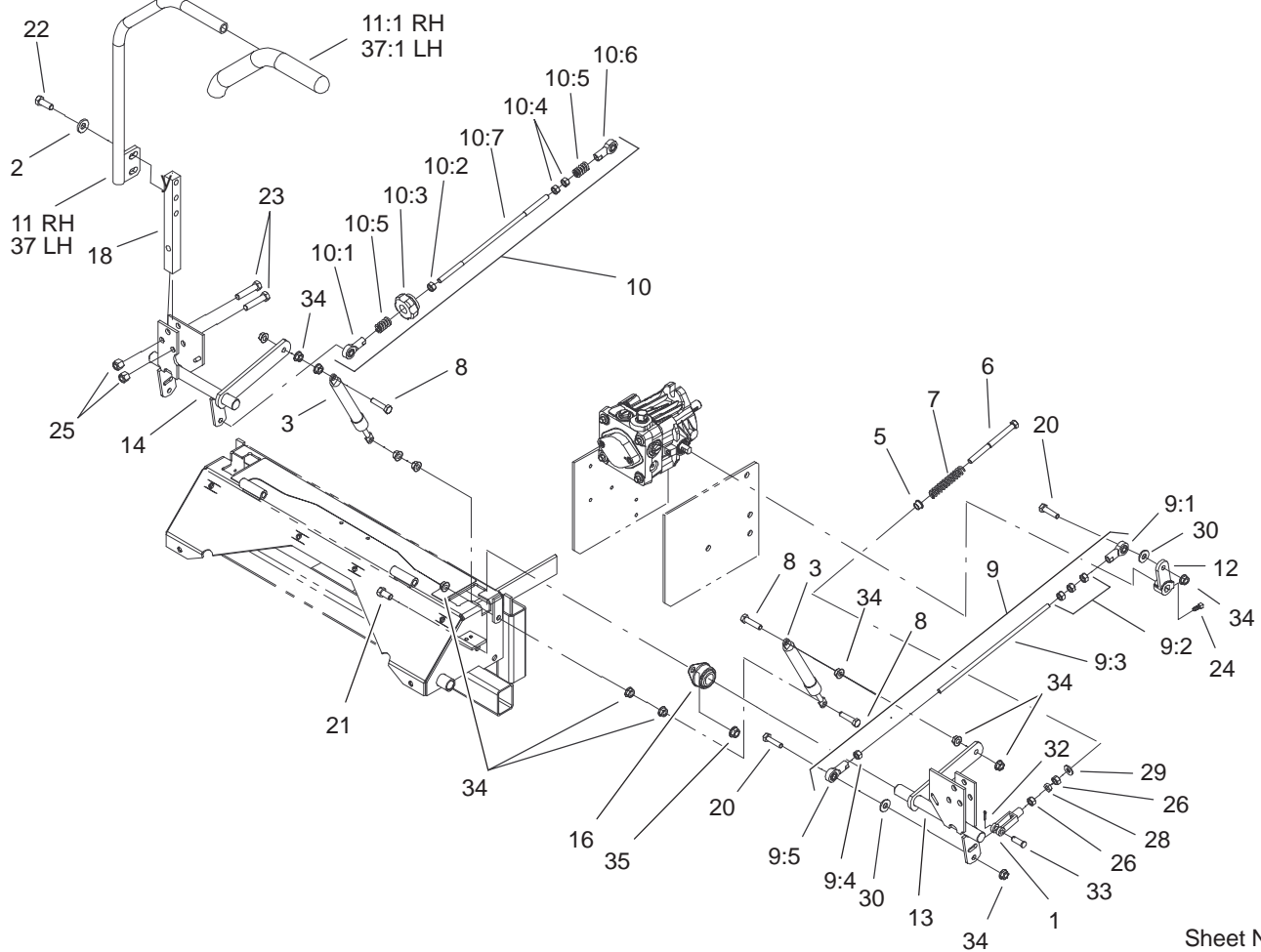


Sheet No.:5

## Brake and Wheel Hub Assembly

Ref. No.	Part No.	Qty.	Description
1	1-513140	2	Bearing-Control
2	1-633454	2	Spring-Brake
3	1-633477	3	Rod-Brake
4	1-634500	1	Brake Lever ASM
4:2	1-633268	1	Grip-Lever, Brake
5	1-632217-03	1	Shaft-Brake
6	103-0354-03	2	Bracket-Brake
7	1-523157	2	Washer-Spacer
9	103-0355	2	Band-Brake
10	1-633060	4	Spacer-Wheel, Short
11	1-633062	4	Spacer-Wheel, Long
12	1-633102	2	Bearing-Flange, Side
13	1-633131	4	Yoke-Linkage, Brake
14	1-633144	2	Pin-Trunion
15	103-0590	2	Hub-Wheel
15:1	103-0589	1	Hub-Wheel
15:2	1-633926	4	Stud-Wheel
18	323-4	4	Screw-HH
19	103-2399	4	Pin-Spring, Clevis
20	325-20	8	Screw-HH
21	302-19	2	Fitting-Grease
22	103-0131	8	Nut-Square
23	3219-3	8	Nut-HH
24	3290-357	4	Nut-HHF
25	3253-7	8	Washer-Lock
26	3256-4	4	Washer-Flat

Ref. No.	Part No.	Qty.	Description
27	3272-10	1	Pin-Cotter
28	1-806800	2	Pin-Cotter
29	322-9	6	Screw-HH
30	103-0384	6	Spacer
31	103-0374	2	Retainer-Band, Brake

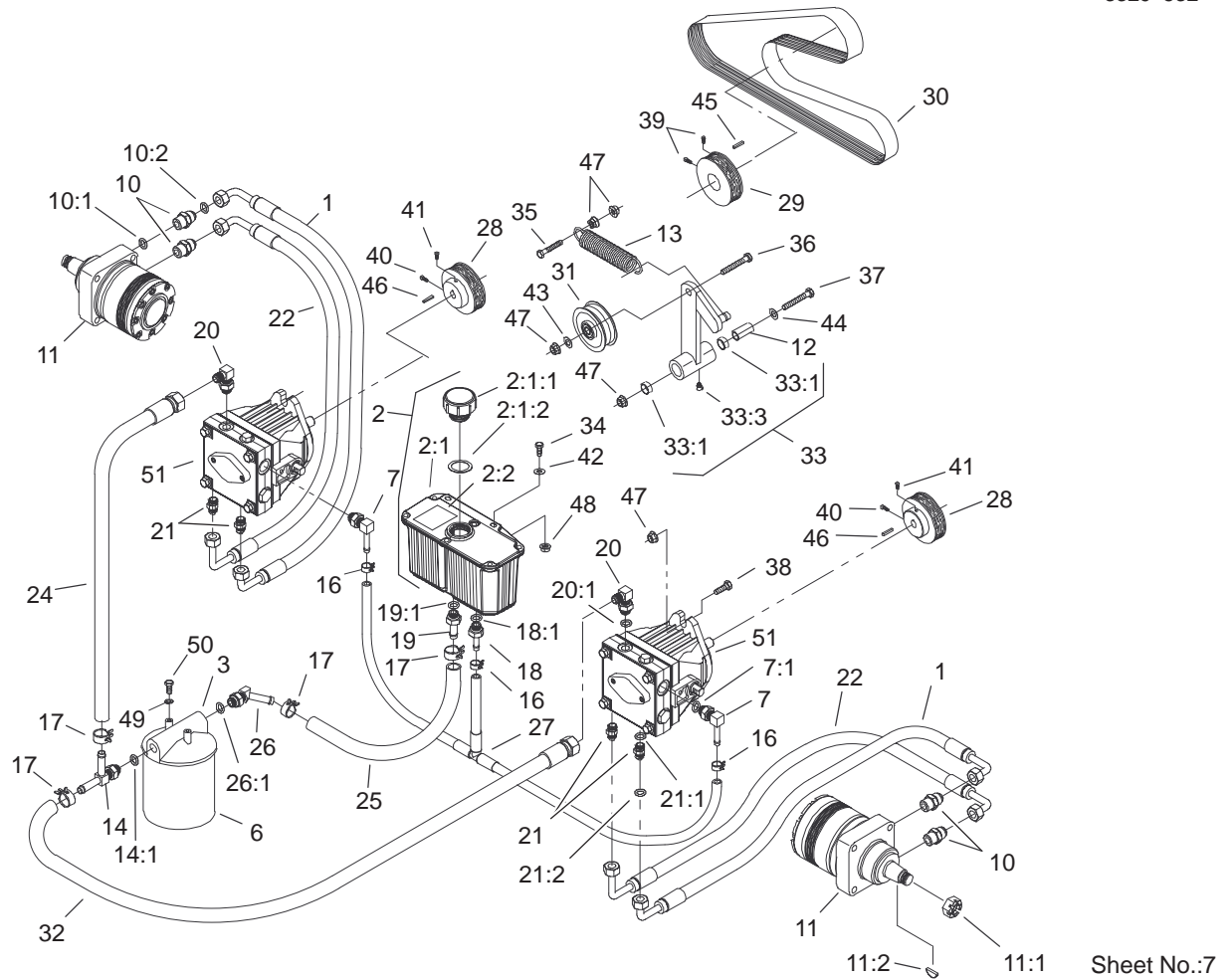


## Steering Controls Assembly

Ref. No.	Part No.	Qty.	Description
1	1-303105	2	Yoke-Adjustable
2	98-5975	4	Washer-Belleville
3	103-2913	2	Damper-Control, Motion
5	1-603735	2	Bushing-Flanged
6	1-603737	2	Bolt-Return, Neutral
7	1-603807	2	Spring-Return, Neutral
8	1-403180	4	Screw-HH
☆9		1	LH Pump Linkage ASM
9:1	1-543017	1	Balljoint-RH
9:2	3219-2	3	Nut-Hex
9:3	103-3064	1	Link-Rod, Tracking
9:4	1-804524	1	Nut
9:5	1-633152	1	Balljoint-Thread, LH
☆10		1	Tracking Rod ASM
10:1	1-543017	1	Balljoint-RH
10:2	3219-2	1	Nut-Hex
10:3	103-3060	1	Knob-Tracking
10:4	1-804524	2	Nut
10:5	1-323245	2	Spring-Compression
10:6	1-633152	1	Balljoint-Thread, LH
10:7	103-3064	1	Link-Rod, Tracking
11	103-0632	1	RH Lever ASM
11:1	1-633257	1	Grip-Control, Motion

Ref. No.	Part No.	Qty.	Description
12	1-632208	2	Arm-Control, Pump
13	1-642319	1	Control-Motion, LH
14	1-642320	1	Control-Motion, RH
16	1-633102	4	Bearing-Flange, Side
18	103-0407	2	Arm-Shaft, Control
20	322-6	4	Screw-HH
21	323-4	8	Screw-HH
22	323-6	4	Screw-HH
23	323-9	6	Screw-HH
24	1-803022	2	Screw-Set
25	3296-39	6	Nut-Lock, NI
26	3219-2	4	Nut-Hex
28	3220-2	2	Nut
29	3256-2	2	Washer-Flat
30	3256-3	4	Washer-Flat
32	3272-5	2	Pin-Cotter
33	1-808280	2	Pin-Clevis
34	32128-20	16	Nut-HF
35	3290-357	8	Nut-HHF
37	103-0631	1	LH Lever ASM
37:1	1-633257	1	Grip-Control, Motion

☆ Not serviced separately



## Hydraulic System Assembly

Ref. No.	Part No.	Qty.	Description
1	103-3734	2	HYD Hose ASM
2	103-1947	1	HYD Reservoir ASM
☆2:1		1	Reservoir-HYD
2:1:1	103-1948	1	Cap-Reservoir, HYD
2:1:2	103-1949	1	Gasket-Cap
2:2	1-523552	1	Decal-Tank, HYD
3	104-7836	1	Head-Filter
6	1-633750	1	Filter-HYD
6	1-633752	1	Filter-HYD, Winter
7	103-1799	2	Elbow-90°
7:1	237-42	1	O-Ring
10	1-633786	4	Fitting-90°
10:1	237-80	1	O-Ring
10:2	1-603992	1	O-Ring
11	1-523328	2	Motor-Wheel
11:1	1-809036	1	Nut-HH
11:2	3257-42	1	Key-Woodruff
*11:99	103-2748	1	Drive Link Kit
*11:99	1-000139	1	Bearing Kit
*11:99	1-000099	1	Seal Kit
12	1-603384	1	Bushing-Pivot, Idler
13	103-3330	1	Spring-Extension
14	103-1828	1	Adapter-Run, Tee
14:1	237-42	1	O-Ring
16	103-1716	3	Clamp-Hose
17	103-1988	4	Clamp-Hose

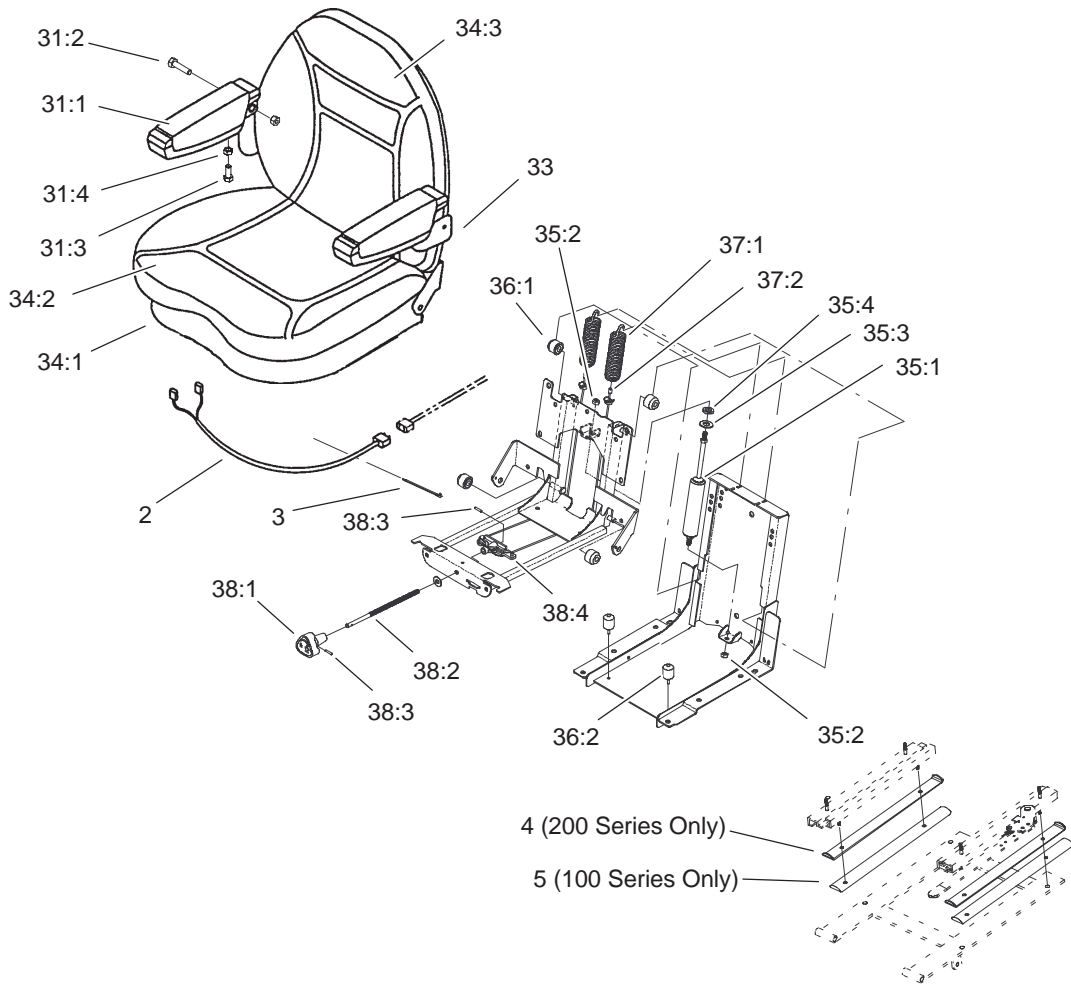
Ref. No.	Part No.	Qty.	Description
18	103-1801	1	Adapter-Straight
18:1	237-42	1	O-Ring
19	103-1912	1	Adapter-Straight
19:1	237-42	1	O-Ring
20	103-1802	2	Fitting-HYD, 90°
20:1	237-42	1	O-Ring
21	1-603990	4	Fitting-Straight
21:1	237-79	1	O-Ring
21:2	1-603992	1	O-Ring
22	103-1863	2	Hose-Lower
24	103-1826	1	HYD Hose ASM
25	103-1808	1	Hose-HYD
26	103-1807	1	Elbow-45°
26:1	237-42	1	O-Ring
27	103-1806	1	HYD Hose ASM
28	1-633568	2	Sheave
29	1-633567	1	Sheave
30	1-633749	1	Belt-Drive, Pump
31	1-633167	1	Sheave-Idler
32	103-1827	1	HYD Hose ASM
33	1-634277	1	Bearing Arm ASM
33:1	1-513034	2	Sleeve-Bearing
33:3	302-40	1	Fitting-Grease
34	321-6	2	Screw-HH
35	323-8	1	Screw-HH
36	323-9	1	Screw-HH

☆ Not serviced separately

\* Not illustrated







Sheet No.:A1

## Seat Assembly No. 99-8522

Ref. No.	Part No.	Qty.	Description
2	103-1227	1	Harness-Wiring, Seat
3	1-303335	5	Tie-Plastic
4	1-633872-03	2	Stop-Seat
5	1-653282-03	2	Stop/Spacer-Seat
*30	1-643281	1	Switch-Seat
31	1-631842	1	Armrest Pad Kit
☆31:1		1	Pad-Arm
☆31:2		1	Capscrew
☆31:3		1	Capscrew
☆31:4		1	Flange-Locknut
*☆31:5		2	Spacer
32	1-631843	1	Boot Kit
*☆32:1		1	Boot
*☆32:2		1	Wire-Form, Upper
*☆32:3		2	Wire-Form, Lower
*☆32:4		2	Tie Wrap
33	1-631844	1	Armrest Kit
*☆33:1		2	Capscrew
☆33:2		1	Armrest ASM
*☆33:3		2	Washer
34	1-631845	1	Pan ASM
☆34:1		1	Pan
☆34:2		1	Seat-Gray
☆34:3		1	Back-Gray
*☆34:4		1	Adhesive-Thermoset
*☆34:5		6	Nut-Panel

Ref. No.	Part No.	Qty.	Description
*☆34:6		10	Staple
35	1-631846	1	Damper Kit
☆35:1		1	Damper
☆35:2		2	Locknut-Hex
☆35:3		1	Washer
☆35:4		1	Spacer
36	1-631847	1	Roller Kit
☆36:1		4	Roller
☆36:2		2	Bumper
*☆36:4		2	Spacer
37	1-631848	1	Spring And Cable Kit
☆37:1		2	Spring
☆37:2		1	Cable ASM
38	1-631849	1	Knob And Shaft Kit
☆38:1		1	Knob-Tension, Adjust
☆38:2		1	Shaft-Tension Adjust
☆38:3		2	Pin-Spring
☆38:4		1	Spring-Hanger

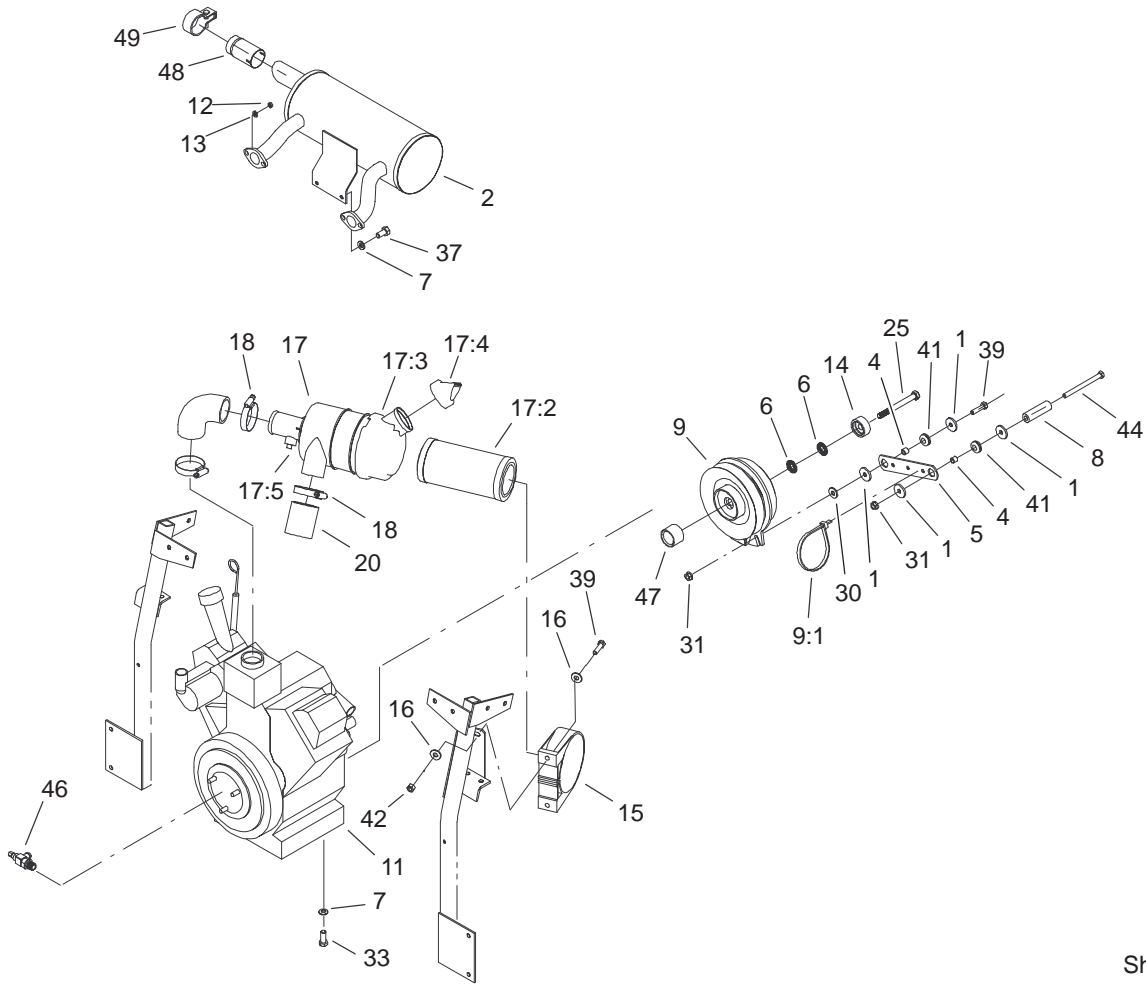
\* Not illustrated

☆ Not serviced separately









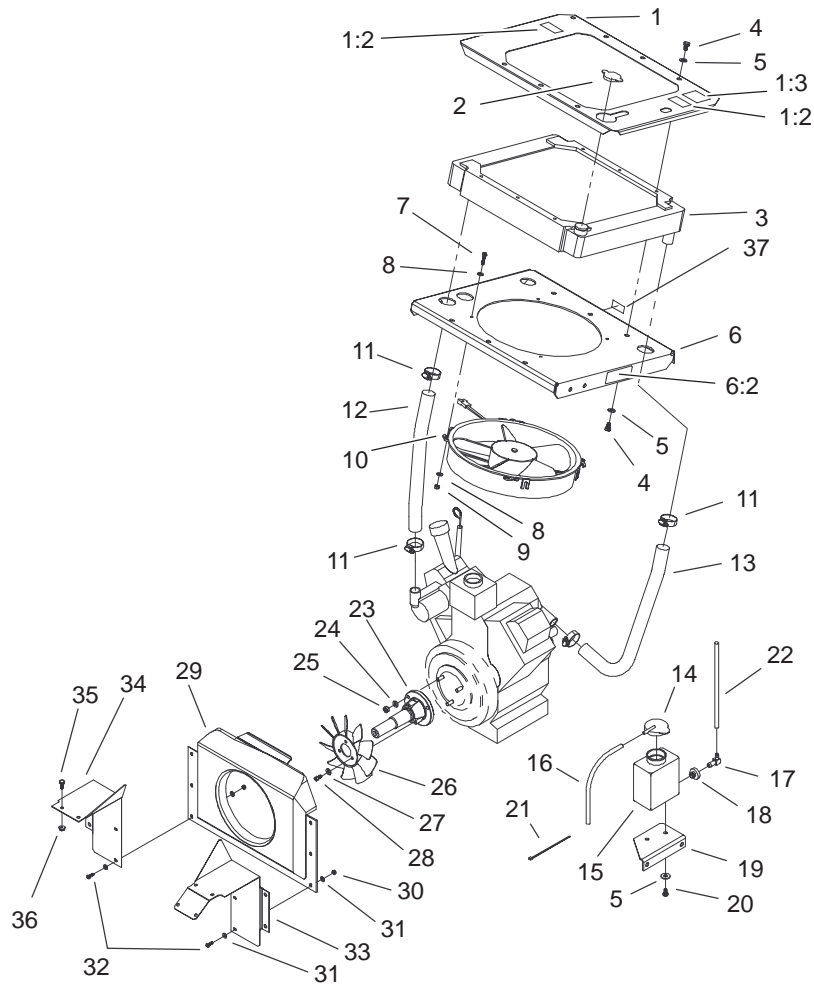
Sheet No.:14

## Engine, Clutch and Air Cleaner Assembly

Ref. No.	Part No.	Qty.	Description
1	1-613235	4	Washer
2	103-2759	1	Muffler
4	1-633545	2	Spacer-Grommet
5	1-633543-03	1	Strap-Clutch, Brake
6	1-603610	2	Washer-Spring
7	1-303334	6	Washer-Spring
8	1-643008	1	Spacer-Anchor, Clutch
9	103-1364	1	Clutch
9:1	1-303335	1	Tie-Plastic
☆11		1	Engine-Kawasaki, Fd750d-As03
12	33013-00	4	Nut-Hex
13	1-805004	4	Washer-Lock
14	103-0152	1	Keeper-Clutch
15	95-5806	1	Bracket-Mounting
16	3256-3	4	Washer-Flat
17	95-5805	1	Air Cleaner ASM
17:2	93-2195	1	Filter
17:3	94-3652	1	Cover ASM
17:4	94-1414	1	Valve-Vacuator
17:5	285-17	1	Plug-Pipe
18	1-643009	2	Clamp-Hose
20	1-643084	1	Hose-Inlet, Air
25	48-7570	1	Screw-HH
30	3256-3	1	Washer-Flat

Ref. No.	Part No.	Qty.	Description
31	32128-20	2	Nut-HF
33	33115-025	4	Screw-HH
37	33115-020	2	Screw-HH
39	322-6	3	Screw-HH
41	1-633630	2	Grommet-Brake
42	3296-29	2	Nut-Lock, NI
44	322-19	1	Screw-HH
46	103-3068	1	Valve-Drain, Oil
47	103-0114	1	Spacer-Clutch
48	103-1511	1	Arrestor-Spark
49	103-1512	1	Clamp-Muffler

☆ Not serviced separately



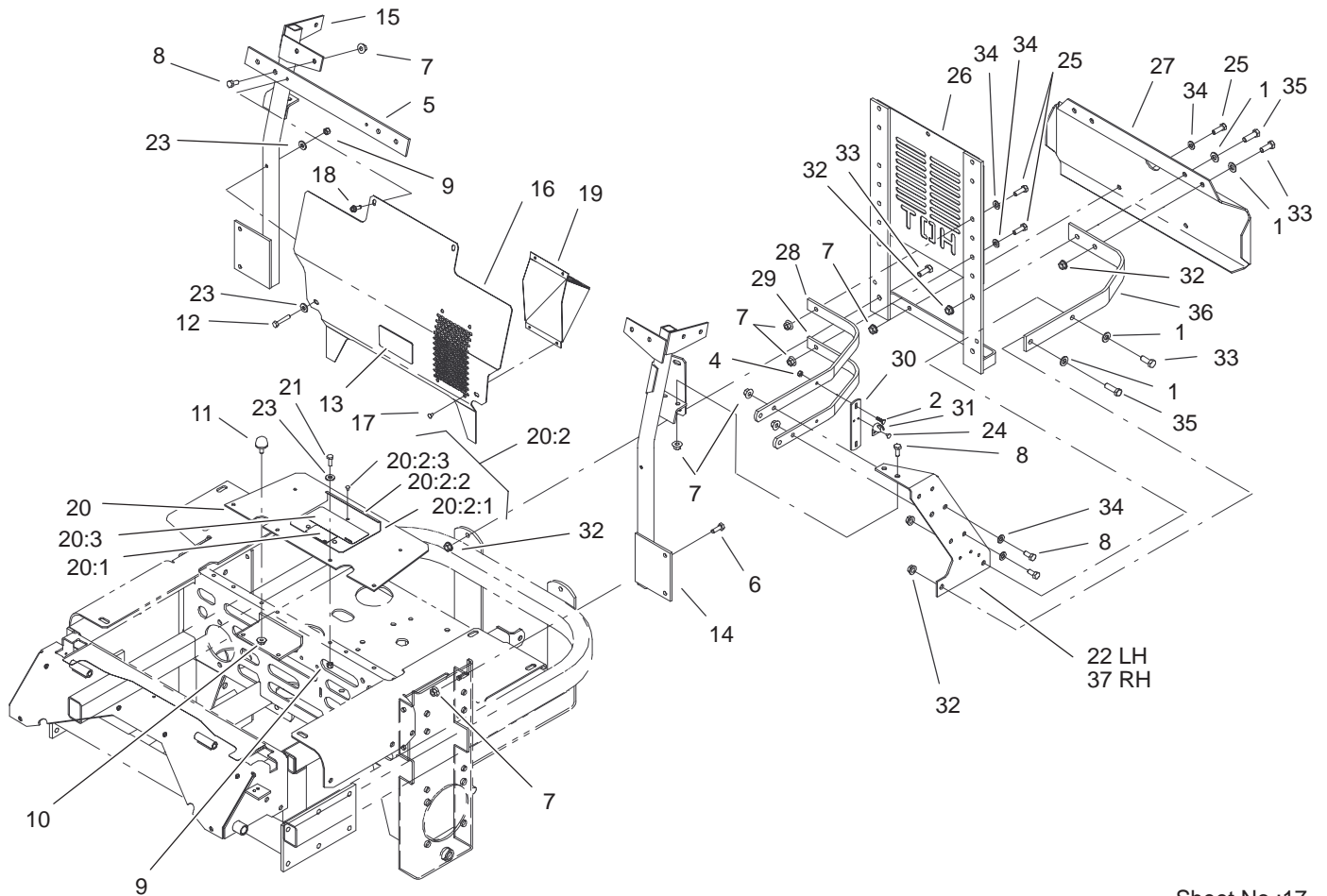
Sheet No.:15

## Cooling System Assembly

Ref. No.	Part No.	Qty.	Description
1	104-7843	1	Radiator Trim Plate ASM
1:2	65-2690	2	Decal-Surface, Hot
1:3	104-2449	1	Decal-Coolant, Havoline
2	1-643161	1	Cap-Radiator
3	103-1046	1	Radiator-Mount, Horiz.
4	322-1	12	Screw-HH
5	3256-23	14	Washer-Flat
6	100-4301	1	Fan Mounting Plate ASM
6:2	1-643253	2	Decal-Fan, Radiator
7	1-803067	4	Screw
8	3256-16	8	Washer-Flat
9	1-804254	4	Nut
10	1-633831	1	Fan
11	1-633989	4	Clamp-Hose
12	103-0074	1	Hose-Inlet, Radiator
13	103-0075	1	Hose-Outlet, Radiator
14	1-643164	1	Cap-Tank, Overflow
15	1-643163	1	Tank-Overflow
16	1-643131	1	Hose
17	1-643259	1	Fitting-Elbow
18	1-513645	1	Bushing-Valve, Fuel
19	103-2603-03	1	Bracket-Bottle

Ref. No.	Part No.	Qty.	Description
20	321-2	2	Screw-HH
21	1-303287	3	Tie-Plastic
22	1-643129	1	Hose
23	1-633851	1	Extension-Crankshaft
24	3255-8	3	Washer-Lock
25	33014-00	3	Nut-Hex
26	1-633869	1	Fan-Pump, Cooling
27	3256-22	3	Washer-Flat
28	1-809095	3	Screw-HSH
29	103-0098	1	Shroud-Fan, HYD
30	3296-2	6	Nut-Lock
31	3256-14	12	Washer-Flat
32	3290-500	6	Screw-PPH
33	103-0895-03	1	Shield-LH
34	1-633794-03	1	Baffle-Engine Shield, RH
35	321-4	6	Screw-HH
36	32128-33	6	Nut-HF
37	103-3270	1	Decal-3750 Rpm



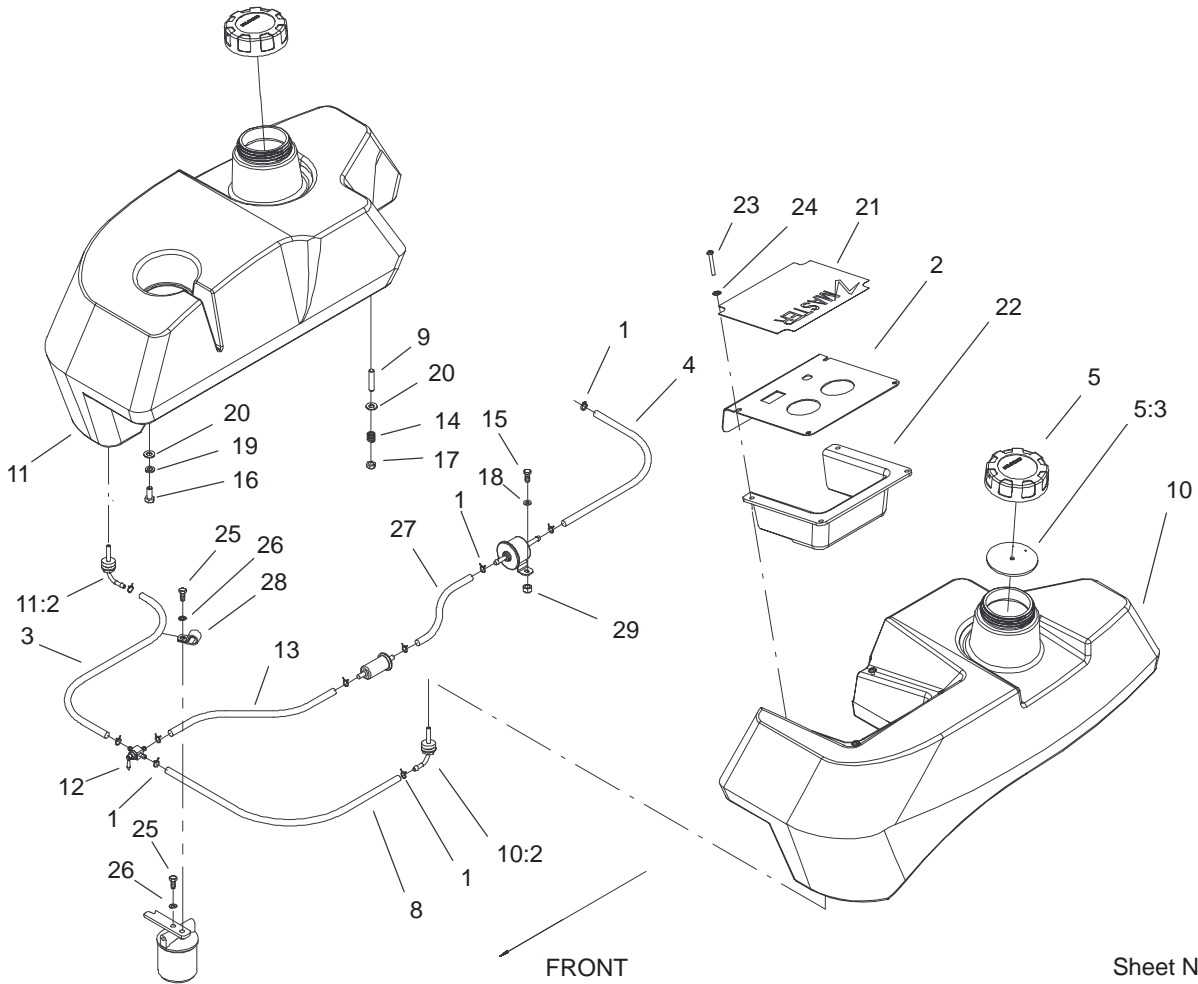


Sheet No.:17

## Cooling Mounting Frame Assembly

Ref. No.	Part No.	Qty.	Description
1	3256-24	6	Washer-Flat
2	1-803075	4	Screw-Truss Head
4	3296-2	4	Nut-Lock
5	1-633878-03	1	Crossbar
6	322-4	4	Screw-HH
7	32128-20	12	Nut-HF
8	322-3	8	Screw-HH
9	3296-42	6	Nut-Lock, NI
10	32128-33	2	Nut-HF
11	1-523420	2	Bumper
12	321-9	2	Screw-HH
13	1-643339	1	Decal-Routing, Belt
14	103-0107-03	1	Brace-Radiator, LH
15	1-632985-03	1	Brace-Radiator, RH
16	103-2870-03	1	Deflector-Air
17	3269-3	4	Rivet-Pop
18	49-2040	2	Screw-Tapping
19	103-0110-03	1	Plenum-Intake, Air
20	1-644276	1	Shield ASM
20:1	1-633462	1	Decal-Important
20:2	1-634308	1	Shield/Lift ASM
20:2:1	103-1308	1	Shield-Engine
20:2:2	1-633300-03	1	Lift-Shield
20:2:3	1-803035	3	Rivet-Pop
20:3	103-0368	1	Decal-Devices, Rotating

Ref. No.	Part No.	Qty.	Description
21	321-4	4	Screw-HH
22	103-0896-03	1	Plate-Side, LH
23	3256-2	6	Washer-Flat
24	923786	4	Rivet-Pop
25	322-5	9	Screw-HH
26	1-632873-03	1	Mount-Radiator, Rear
27	1-633886-03	1	Guard-Bumper
28	1-633897-03	2	Rib-Top
29	1-633898-03	2	Rib-Bottom
30	1-633877-03	2	Bar-Hook, Latch
31	1-643189	2	Keeper-Latch, Rubber
32	3290-357	10	Nut-HHF
33	323-6	6	Screw-HH
34	3256-23	11	Washer-Flat
35	323-7	4	Screw-HH
36	1-633896-03	2	Bar-Mount Frame, Radiator
37	103-0897-03	1	Plate-Side, RH

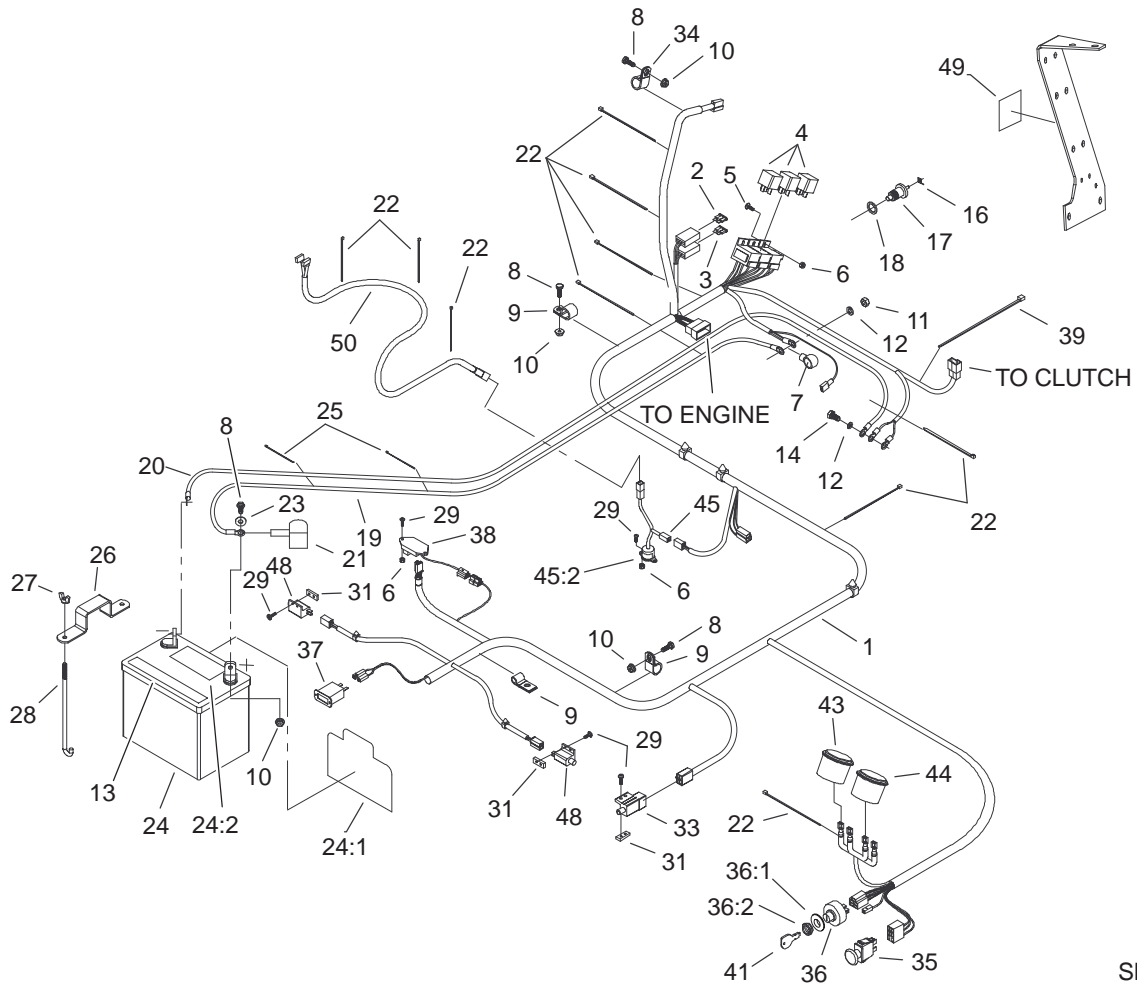


Sheet No.:24

## Fuel System Assembly

Ref. No.	Part No.	Qty.	Description
1	1-303077	10	Clamp
2	99-4617-03	1	Panel-Control
3	103-2885	1	Hose-Fuel
4	103-1335	1	Hose-Fuel
5	88-3980	2	Gas Cap ASM
5:3	88-4010	1	Gasket-Cap, Gas
8	1-543456	1	Hose-Fuel
9	1-633023	6	Stud
10	105-3629	1	LH Fuel Tank ASM
10:2	103-2605	1	Fitting-Fuel, Bulkhead
11	105-3628	1	RH Fuel Tank ASM
11:2	103-2605	1	Fitting-Fuel, Bulkhead
12	1-633347	1	Valve-Fuel
13	1-303426	1	Hose-Line, Fuel
14	1-633349	6	Spring-Tank, Fuel
15	321-4	2	Screw-HH
16	322-3	2	Screw-HH
17	3296-47	6	Nut-Lock, NI
18	3256-2	2	Washer-Flat
19	1-805005	2	Washer-Lock
20	3256-23	8	Washer-Flat
21	99-4612	1	Decal-Panel, Control
22	99-4940	1	Shield-Panel, Control
23	1-803071	4	Screw
24	1-303435	4	Washer-Spring
25	321-3	2	Screw-HH

Ref. No.	Part No.	Qty.	Description
26	1-805004	2	Washer-Lock
27	1-643270	1	Hose-Fuel
28	1-513762	1	Clip-Loom
29	32128-33	2	Nut-HF



Sheet No.:29

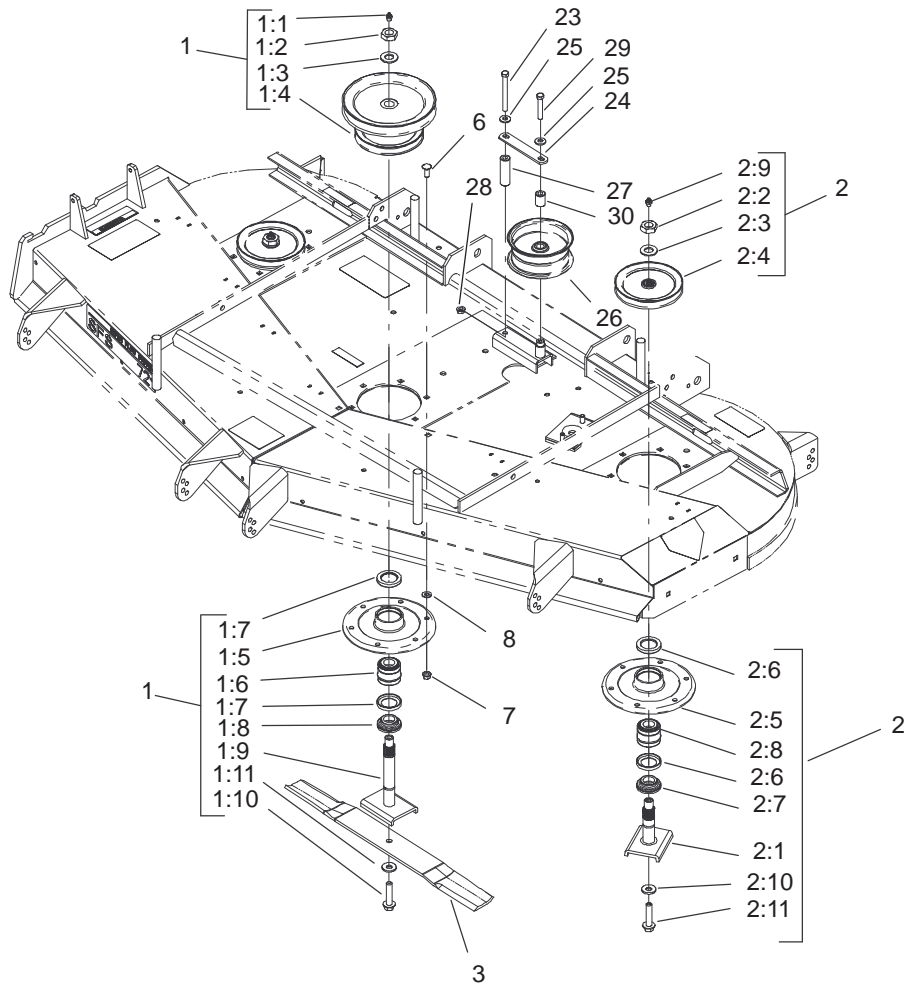
## Electrical System Assembly

Ref. No.	Part No.	Qty.	Description
1	104-7757	1	Harness-Wire
2	1-816001	1	Fuse-Type, Blade
3	1-816003	1	Fuse-Blade Type, 30 Amp
4	1-643275	3	Relay
5	1-803071	2	Screw
6	3296-2	2	Nut-Lock
7	1-543393	1	Insulator-Solenoid
8	321-4	5	Screw-HH
9	1-633396	3	Clip-Loom
10	32128-33	5	Nut-HF
11	33014-00	1	Nut-Hex
12	3256-23	2	Washer-Flat
13	105-3646	1	Decal-Warning, Battery
14	33114-016	1	Screw-HH
16	1-643145	1	Tab
17	103-0283	1	Sender-Temperature
18	1-643153	1	Washer-Aluminum
19	1-523279	1	Wire-Battery, Positive
20	1-633307	1	Wire-Ground
21	1-543391	1	Insulator-Battery
22	1-303335	10	Tie-Plastic
23	3256-2	2	Washer-Flat
24	105-1692	1	Battery
24:1	104-4163	1	Decal-Battery

Ref. No.	Part No.	Qty.	Description
24:2	104-4164	1	Decal-Battery
25	1-303287	2	Tie-Plastic
26	1-633652-03	1	Strap-Holddown
27	1-543792	2	Wingnut
28	1-633651	2	Bolt-Holddown
29	3290-500	10	Screw-PPH
31	1-633181	3	Plate-Tapped
33	1-633111	1	Switch
34	1-513762	1	Clip-Loom
35	1-633673	1	Switch-Delta
36	88-9830	1	Key Switch ASM
36:1	3254-5	1	Washer-Tooth
36:2	218-461	1	Nut-HH
37	1-513374	1	Meter-Hour
38	100-6186	1	Module-Delay, Seat
39	1-643115	1	Tie-Plastic
41	63-8360	2	Key-Ignition
43	1-643037	1	Gauge-Voltmeter
44	1-643021	1	Gauge-Temperature
45	1-644427	1	Tilt Switch ASM
45:2	1-643401	1	Decal-Switch, Mercury
48	1-513051	2	Switch-Open, Normally
49	103-1027	1	Decal-Relay
50	103-1227	1	Harness-Wiring, Seat







Sheet No.: 72

## Spindle and Pulley Assembly

Ref. No.	Part No.	Qty.	Description
1	105-1691	1	Spindle Housing ASM
1:1	302-2	1	Fitting-Grease
1:2	32146-20	1	Nut-Jam
1:3	92-5836	1	Washer
1:4	100-4309	1	Pulley ASM
1:5	61-4160	1	Housing
1:6	46-8530	1	Bearing ASM
1:7	253-139	2	Seal-Oil
1:8	27-0950	1	Spacer
1:9	105-1686	1	Spindle Shaft ASM
1:10	92-5816	1	Bolt-Blade
1:11	1-513435	1	Washer-Spring
2	99-4642	2	Outer Spindle ASM
2:1	27-0920	1	Shaft
2:2	32146-20	1	Nut-Jam
2:3	7-4150	1	Washer
2:4	99-4615	1	Pulley And Hub ASM
2:5	61-4160	1	Housing
2:6	253-139	2	Seal-Oil
2:7	27-0950	1	Spacer
2:8	46-8530	1	Bearing ASM
2:9	302-2	1	Fitting-Grease
2:10	1-513435	1	Washer-Spring
2:11	92-5816	1	Bolt-Blade
3	94-1861	3	Blade
6	3231-22	18	Screw-CARR

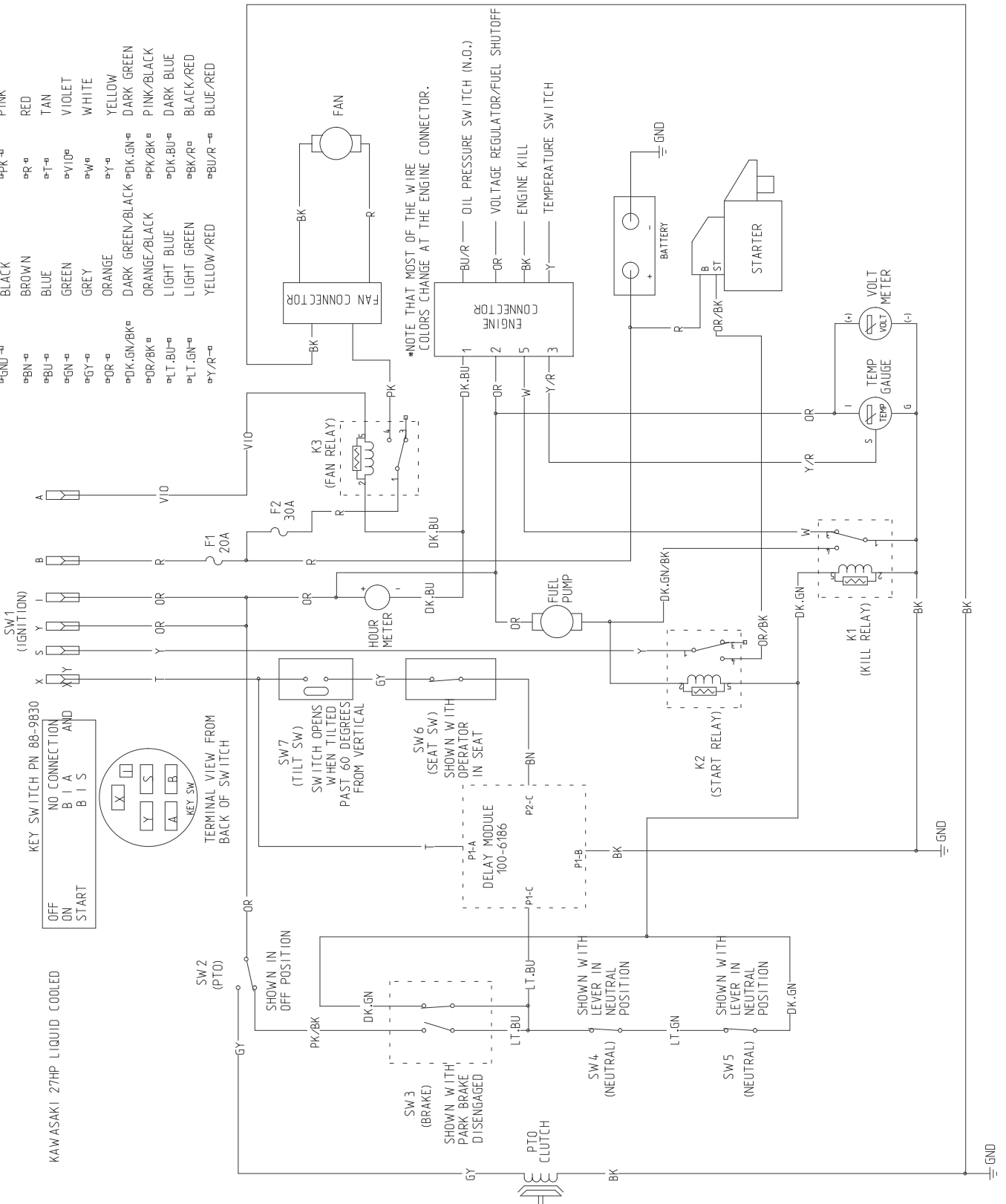
Ref. No.	Part No.	Qty.	Description
7	32128-21	18	Nut-HF
8	3256-24	4	Washer-Flat
23	323-42	1	Screw-HH
24	1-653189	1	Plate
25	98-5975	2	Washer-Belleville
26	1-413099	1	Pulley-Idler
27	99-4659	1	Spacer-Bracket
28	3290-357	1	Nut-HHF
29	323-11	1	Screw-HH
30	1-653190	1	Spacer

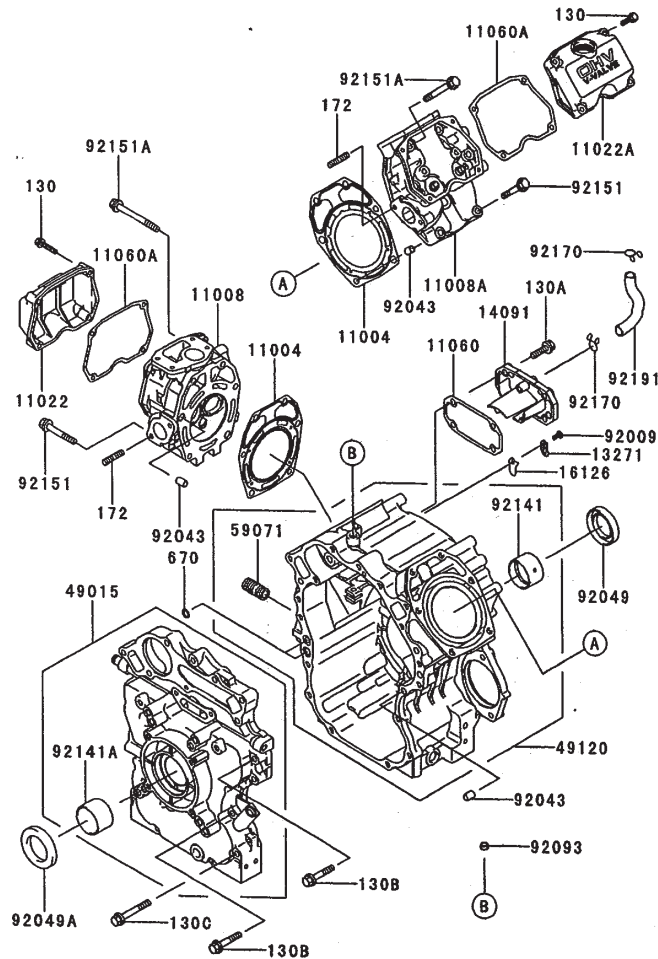


# Electrical Schematic

**WIRE COLOR CODES**

ⓂGND-Ⓜ	BLACK	ⓂPK-Ⓜ	PINK
ⓂBN-Ⓜ	BROWN	ⓂR-Ⓜ	RED
ⓂBU-Ⓜ	BLUE	ⓂT-Ⓜ	TAN
ⓂGN-Ⓜ	GREEN	ⓂVIO-Ⓜ	VIOLET
ⓂGY-Ⓜ	GREY	ⓂW-Ⓜ	WHITE
ⓂOR-Ⓜ	ORANGE	ⓂY-Ⓜ	YELLOW
ⓂDK.GN/BK-Ⓜ	DARK GREEN/BLACK	ⓂDK.GN-Ⓜ	DARK GREEN
ⓂOR/BK-Ⓜ	ORANGE/BLACK	ⓂPK/BK-Ⓜ	PINK/BLACK
ⓂLT.BU-Ⓜ	LIGHT BLUE	ⓂDK.BU-Ⓜ	DARK BLUE
ⓂLT.GN-Ⓜ	LIGHT GREEN	ⓂBK/R-Ⓜ	BLACK/RED
ⓂY/R-Ⓜ	YELLOW/RED	ⓂBU/R-Ⓜ	BLUE/RED

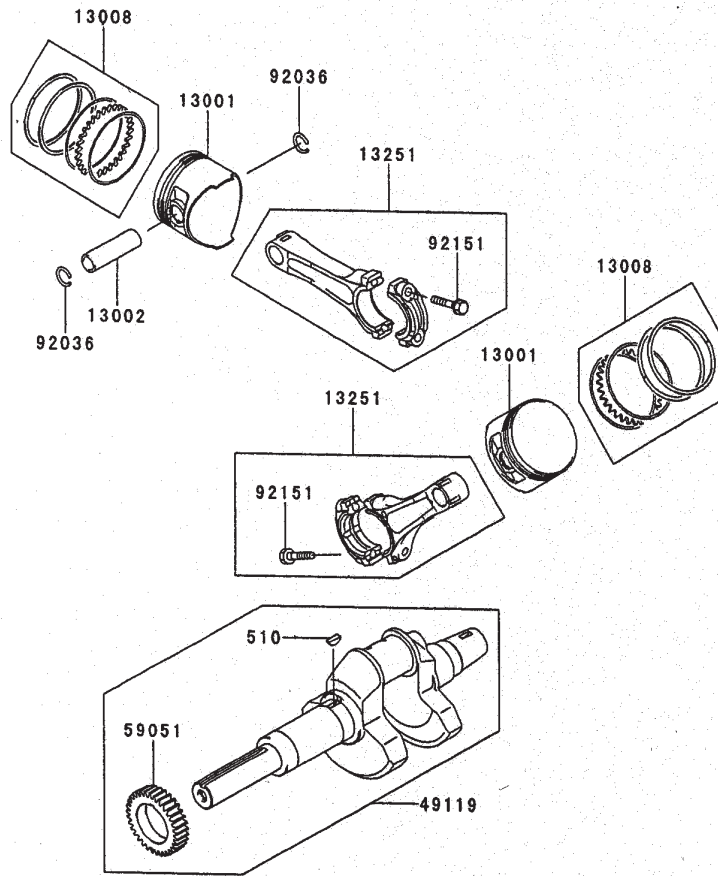




## Cylinder/Crankcase Assembly Kawasaki FD750D-AS03

Ref. No.	Part No.	Qty.	Description	Ref. No.	Part No.	Qty.	Description
11004	11004-2142	2	Gasket-Head	130	130G0630	8	Bolt-Flanged
11008	11008-2145	1	Head-Comp-Cylinder	130A	130G0830	4	Bolt-Flanged
11008A	11008-2146	1	Head-Comp-Cylinder	130B	130G0845	4	Bolt-Flanged
11022	11022-2072	1	Case-Rocker	130C	310G0860	4	Bolt-Flanged
11022A	11022-2073	1	Case-Rocker	172	172G0822	4	Bolt-Stud
11060	11060-2466	1	Gasket, Breath	670	670B2011	2	O-Ring
11060A	11060-2470	2	Gasket, Rocker, Case				
13271	13271-2105	2	Plate				
14091	14091-2064	1	Cover, Breath				
16126	16126-2225	2	Valve, Breath				
49015	49015-6232	1	Cover-Crankcase				
49120	49120-6127	1	Crankcase-Comp				
59071	59071-2079	1	Joint				
92009	92009-2308	2	Screw				
92043	92043-1037	6	Pin				
92049	92049-2242	1	Seal-Oil				
92049A	92049-2243	1	Seal-Oil				
92093	92093-2086	1	Seal				
92141	92141-2118	1	Bearing-Plane				
92141A	92141-2119	1	Bearing-Plane				
92151	92151-2158	4	Bolt				
92151A	92151-2159	8	Bolt				
92170	92170-2002	2	Clamp				
92191	92191-2105	1	Tube				

Obtain Parts from Kawasaki

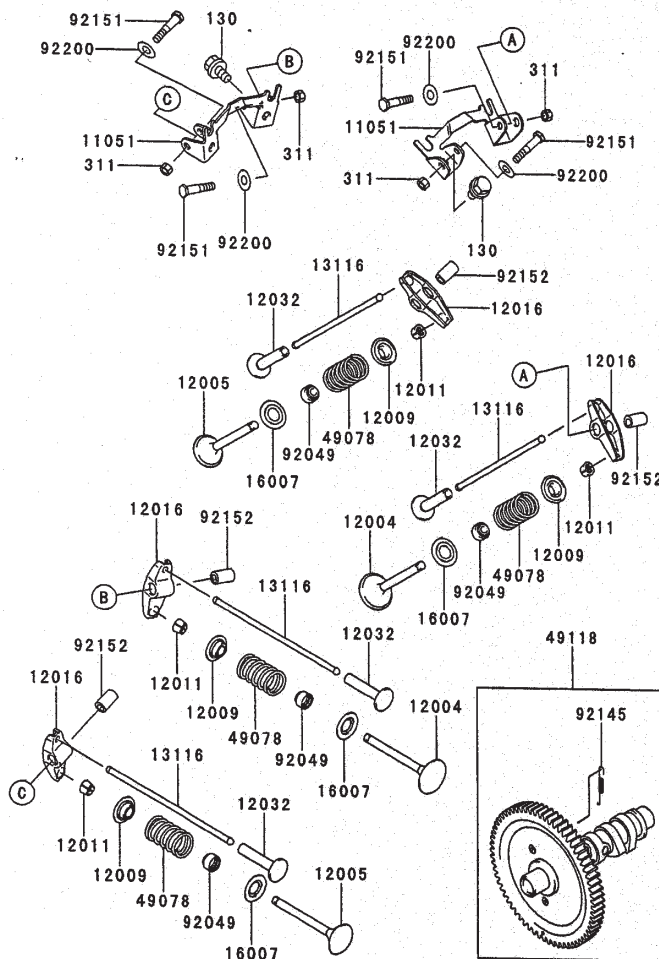


## Piston/Crankshaft Assembly Kawasaki FD750D-AS03

Ref. No.	Part No.	Qty.	Description
13001	13001-2125	2	Piston-Engine
13002	13002-2069	2	Pin-Piston
13008	13008-6007	2	Ring-Set-Piston
13251	13251-2058	2	Rod ASM-Connecting
49119	49119-2198	1	Crankshaft ASM
59051	59051-2358	1	Gear-Spur, 33T
92036	92036-008	4	Ring-Snap
92151	92151-2150	4	Bolt
510	510A5100	1	Key-Woodruff

Ref. No.	Part No.	Qty.	Description

Obtain Parts from Kawasaki



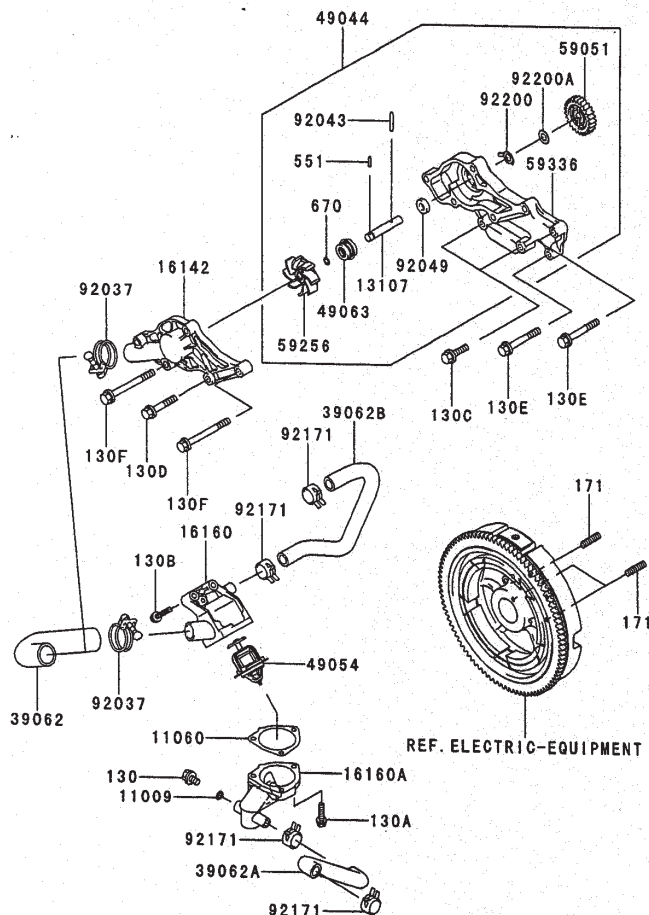
### Valve/Camshaft Assembly Kawasaki FD750D-AS03

Ref. No.	Part No.	Qty.	Description
11051	11051-2092	2	Bracket
12004	12004-2113	2	Valve-Intake
12005	12005-2100	2	Valve-Exhaust
12009	12009-2060	4	Retainer-Valve Spring
12011	12011-2052	8	Collet
12016	12016-2063	4	Arm-Rocker
12032	12032-2060	4	Tappet
13116	13116-2074	4	Rod-Push
16007	16007-2052	4	Seat-Spring
49078	49078-2060	4	Spring-Engine Valve
49118	49118-2138	1	Camshaft
92049	92049-2100	4	Seal-Oil
92145	92145-2085	1	Spring
92151	92151-2134	4	Bolt
92152	92152-2066	4	Collar
92200	92200-2128	4	Washer
130	130G0814	4	Bolt-Flanged
311	311B0600	4	Nut-Hex

Ref. No.	Part No.	Qty.	Description

Obtain Parts from Kawasaki



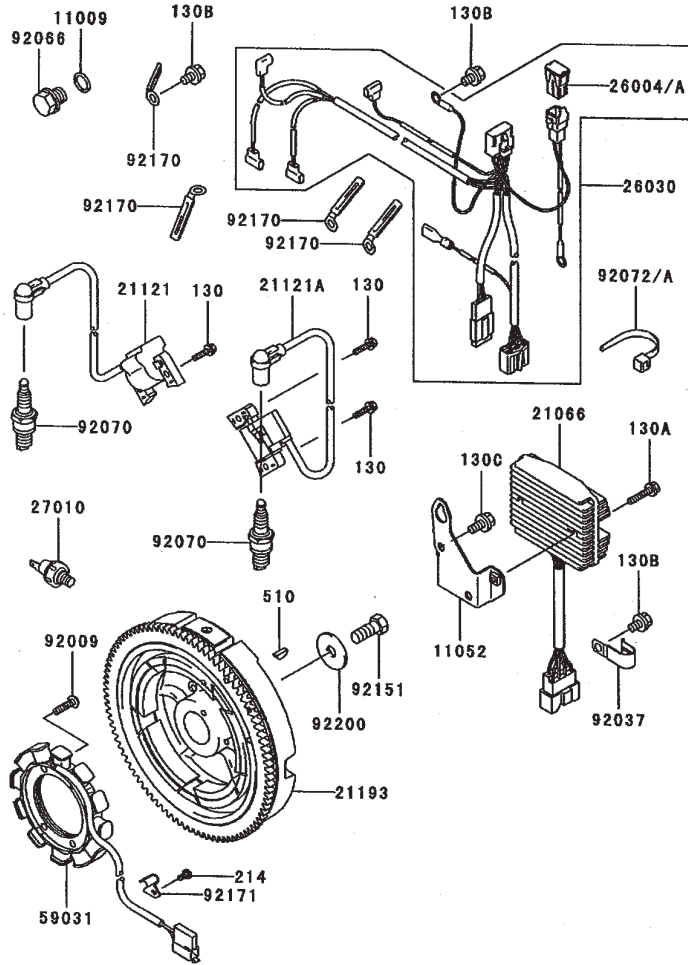


## Cooling Equipment Assembly Kawasaki FD750D-AS03

Ref. No.	Part No.	Qty.	Description
11009	11009-3028	1	Gasket
11060	11060-2475	1	Gasket-Thermostat
13107	13107-2097	1	Shaft-Impeller
16142	16142-2077	1	Cover-Pump
16160	16160-2127	1	Body-Upper
16160A	16160-6002	1	Body-Valve
39062	39062-2080	1	Hose-Cooling
39062A	39062-2083	1	Hose-Cooling
39062B	39062-2084	1	Hose-Cooling
49044	49044-2063	1	Pump-Water
49054	49054-2058	1	Thermostat
49063	49063-1054	1	Seal-Mechanical
59051	59051-2355	1	Gear-Spur, 25T
59256	59256-2069	1	Impeller
59336	59336-2078	1	Case-Pump
92037	92170-1284	2	Clamp
92043	92043-2237	1	Pin
92049	92049-2111	1	Seal-Oil
92171	92171-2056	4	Clamp
92200	92200-2134	1	Washer
92200A	92200-2135	1	Washer
130	130C0812	1	Bolt-Flanged
130A	130G0625	3	Bolt-Flanged
130B	130G0635	2	Bolt-Flanged

Ref. No.	Part No.	Qty.	Description
130C	130G0830	2	Bolt-Flanged
130D	130G0845	1	Bolt-Flanged
130E	130G0860	2	Bolt-Flanged
130F	130G0880	4	Bolt-Flanged
171	171G0818	3	Bolt-Stud
551	551A0314	1	Pin-Dowel
670	670B1507	1	O-Ring

Obtain Parts from Kawasaki

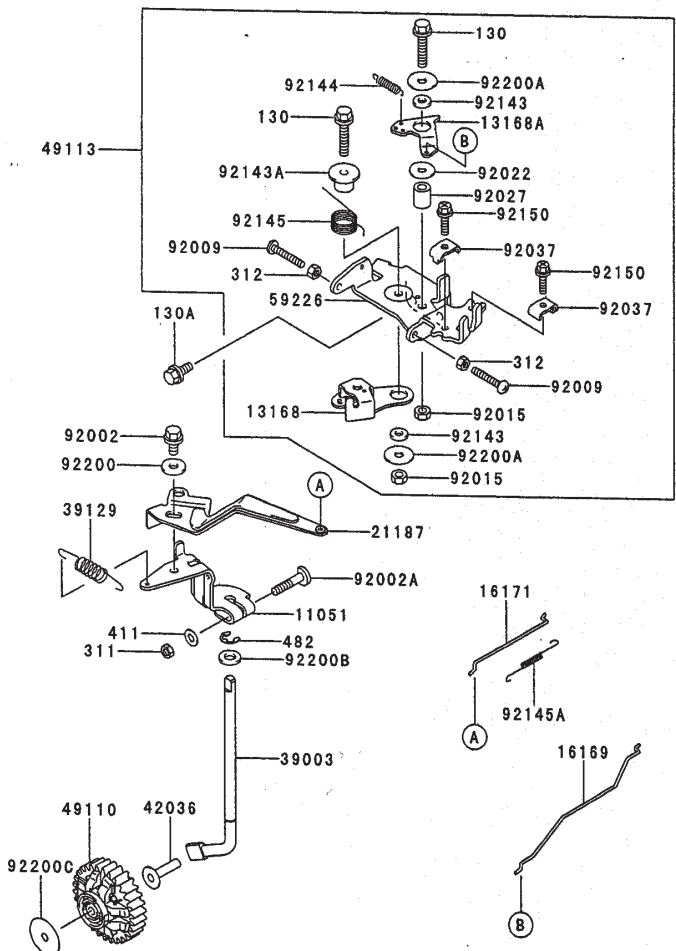


## Electric Equipment Assembly Kawasaki FD750D-AS03

Ref. No.	Part No.	Qty.	Description
11009	11009-2766	1	Gasket
11052	11052-2058	1	Bracket
21066	21066-2079	1	Regulator-Voltage
21121	21121-2090	1	Coil-Ignition, No. 1
21121A	21121-2091	1	Coil-Ignition, No. 2
21193	21193-2177	1	Flywheel ASM
26004	26004-1093	1	Fuse ASM
26030	26030-2320	1	Harness
27010	27010-7001	1	Switch
59031	59031-2127	1	Coil-Charging
92009	92009-2273	4	Scerw
92037A	92037-2101	1	Clamp
92066	92066-2099	1	Plug-Drain
92070	92070-2110	2	Plug-Spark, BPR2ES
92072	92072-1195	1	Band
92151	92151-2097	1	Bolt
92170	92170-2060	4	Clamp
92171	92171-2060	1	Clamp
92200	92200-2119	1	Washer
130	130G0520	1	Bolt-Flanged
130A	130G0630	2	Bolt-Flanged
130B	130G0812	3	Bolt-Flanged
130C	130G0816	2	Bolt-Flanged
214	214B0510	1	Screw-Pan+

Ref. No.	Part No.	Qty.	Description
510	510A5100	1	Key-Woodruff

Obtain Parts from Kawasaki



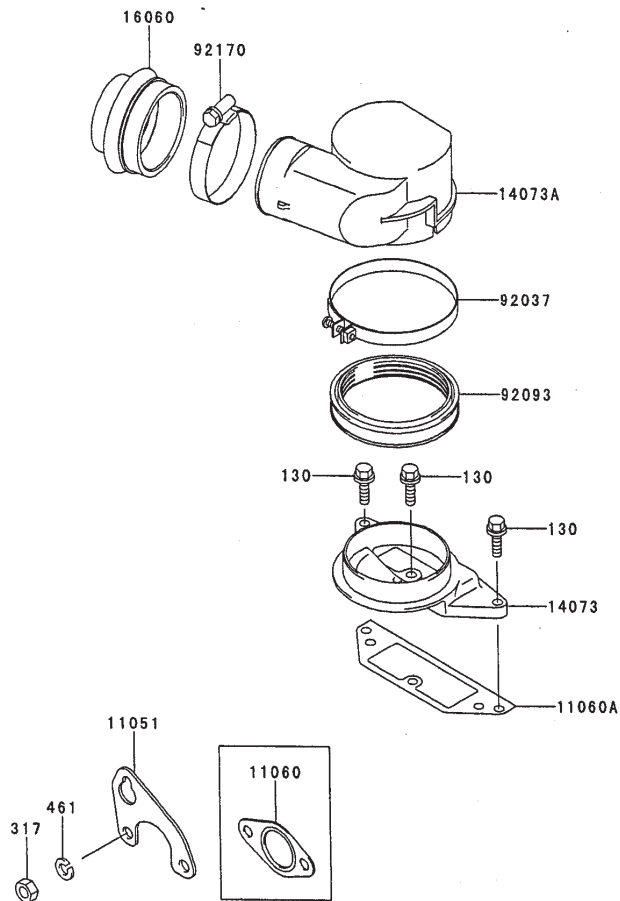
## Control Equipment Assembly Kawasaki FD750D-AS03

Ref. No.	Part No.	Qty.	Description
11051	11051-2113	1	Bracket
13168	13168-2466	1	Lever-Throttle
13168A	13168-2467	1	Lever-Choke
16169	16169-2142	1	Link-Choke
16171	16171-2091	1	Link
21187	21187-2073	1	Arm ASM
39003	39003-2091	1	Arm-Pivot
39129	39129-2099	1	Spring-Governor
42036	42036-2060	1	Sleeve
49110	49110-2094	1	Governor ASM
49113	49113-2170	1	Panel-Comp-Control
59226	59226-2328	1	Panel-Control
92002	92002-1902	1	Bolt
92002A	92002-2269	1	Bolt
92009	92009-2381	2	Screw
92015	92015-2051	2	Nut
92022	92002-2372	1	Washer
92027	92027-1461	1	Collar
92037	92037-2209	2	Clamp
92143	92143-2135	2	Collar
92143A	92143-2148	1	Collar
92144	92144-2052	1	Spring
92145	92145-2058	1	Spring
92145A	92145-2095	1	Spring

Ref. No.	Part No.	Qty.	Description
92150	92150-2182	2	Bolt
92200	92200-2035	1	Washer
92200A	92200-2108	2	Washer
92200B	92200-2120	1	Washer
92200C	92200-2122	1	Washer
130	130B0630	2	Bolt-Flanged
130A	130G0614	2	Bolt-Flanged
311	311B0600	2	Nut-Hex
312	312G0500	2	Nut-Hex
411	411B0600	1	Washer
482	482J7000	1	Circlip-Type E

Obtain Parts from Kawasaki





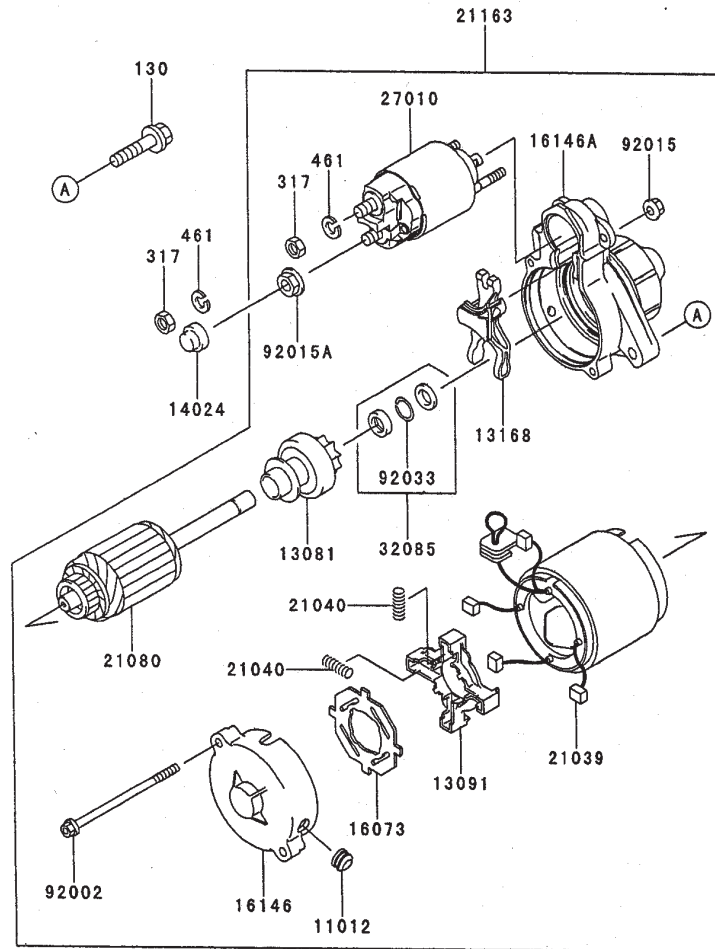
## Air Filter/Muffler Assembly Kawasaki FD750D-AS03

Ref. No.	Part No.	Qty.	Description
11051	11051-2088	1	Bracket
11060	11060-2467	2	Gasket-Muffler
11060A	11060-2474	2	Gasket-Air Filter
14073	14073-2075	1	Duct-Lower
14073A	14073-2076	1	Duct-Upper
16060	16060-2197	1	Pipe-Intake
92037	92037-1654	1	Clamp
92093	92093-2118	1	Seal
92170	92170-2075	1	Clamp
130	130G0620	3	Bolt-Flanged
317	317R0800	1	Nut-Hex
461	461F0800	1	Washer-Spring

Ref. No.	Part No.	Qty.	Description

Obtain Parts from Kawasaki





## Starter Assembly Kawasaki FD750D-AS03

Ref. No.	Part No.	Qty.	Description	Ref. No.	Part No.	Qty.	Description
	11012	1	Cap				
	13081	1	Clutch ASM				
	13091	1	Holder-Brush				
	13168	1	Lever-Shift				
	14024	1	Cover				
	16073	1	Insulator				
	16146	1	Cover ASM				
	16146A	1	Cover ASM				
	21039	4	Brush				
	21040	4	Spring-Brush				
	21080	1	Armature				
	21163	1	Starter-Electric				
	27010	1	Switch				
	32085	1	Stopper				
	92002	2	Bolt				
	92015	2	Nut				
	92015A	1	Nut				
	92033	1	Ring-Snap				
	130	2	Bolt-Flanged				
	317	2	Nut-Hex				
	461	2	Washer-Spring				

Obtain Parts from Kawasaki





