



52in TURBO FORCE Mower Finishing Kit Z500 Twin Soft Bagger

Model No. 78501

Parts Catalog

Ordering Replacement Parts

To order replacement parts, please supply: the part number, the quantity, and the description of each part desired.

Understanding Reference Numbers

Each identified part in an illustration has a reference number. The reference number for a part also appears in the parts list, along with other information about the part.

This catalog uses two special reference number formats, one to indicate parts in a service assembly and another to indicate the quantity of a given part in an illustration.

Service Assembly Reference Numbers

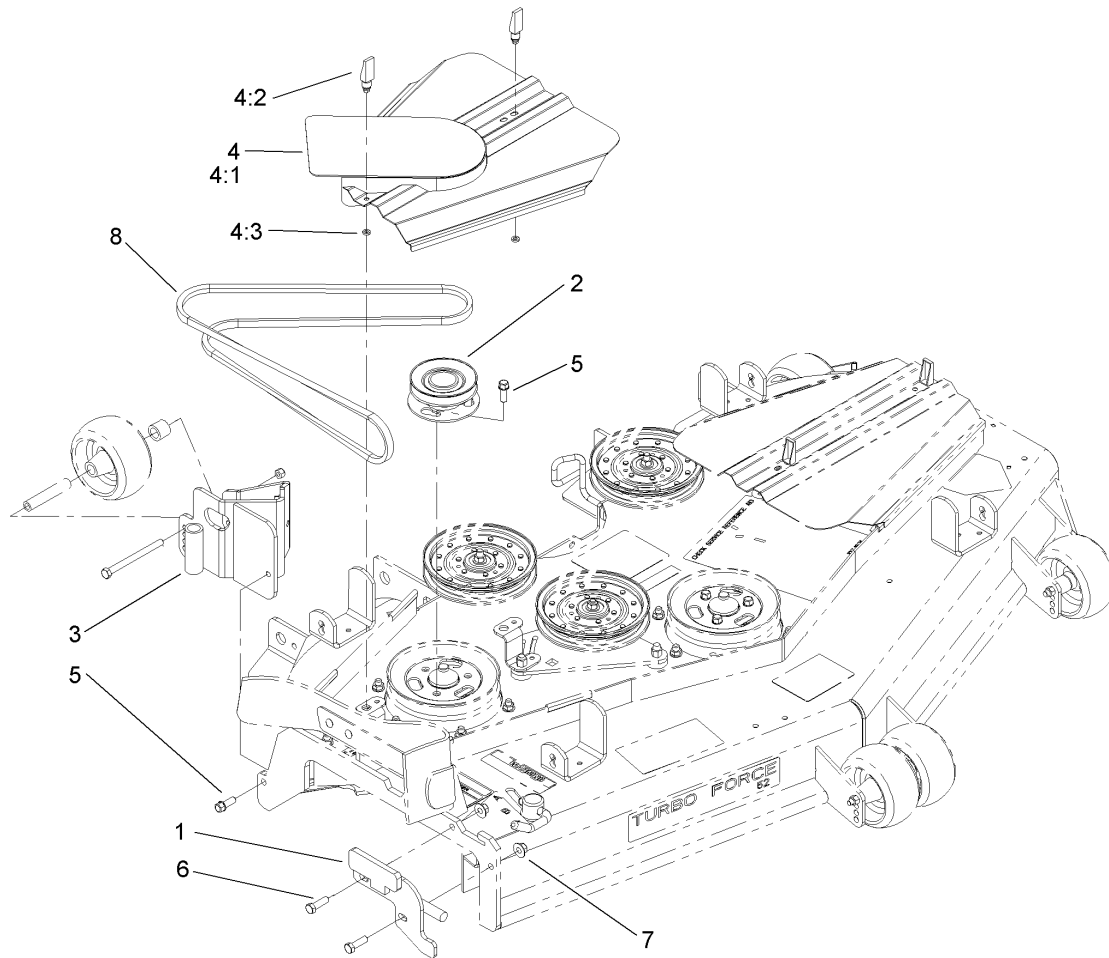
Parts in service assemblies have reference numbers in the form **a:b**. The **a** represents the reference number of the entire service assembly and the **b** represents a sequential number unique to each part within the service assembly.

For example, a wheel assembly might be identified by reference number 6, the tire by **6:1**, the valve by **6:2**, and the wheel by **6:3**. When you order the assembly identified by reference number 6, you receive all parts identified by reference numbers 6:1, 6:2, and 6:3. However, you may also order any part individually. Reference numbers of this type appear in illustrations and in part lists.

Reference Numbers Indicating Quantity

In an illustration, if a reference number indicates more than one part, the reference number has the form **nX y**. The **n** represents the quantity of the part, the **X** is the multiplication symbol, and the **y** represents the reference number.

For example, in an illustration, the reference number **2X 37** means that two of the parts identified by reference number 37 are indicated.



52in Finishing Kit Assembly

Ref	Part No.	Qty.	Description				
1	106-3448-03	1	Front Hinge ASM				
2	106-3395	1	Pulley ASM				
3	107-3400-01	1	Rear Hinge ASM				
4	107-1628	1	Latch And Cover ASM				
4:1	107-3217-01	1	Belt Cover ASM				
4:2	74-5950	2	Latch-Swell				
4:3	99-3058	2	Washer				
5	95-1726	4	Screw-Taptite				
6	323-7	2	Screw-HH				
7	32128-43	2	Nut-Flange				
8	106-3038	1	Belt-V				