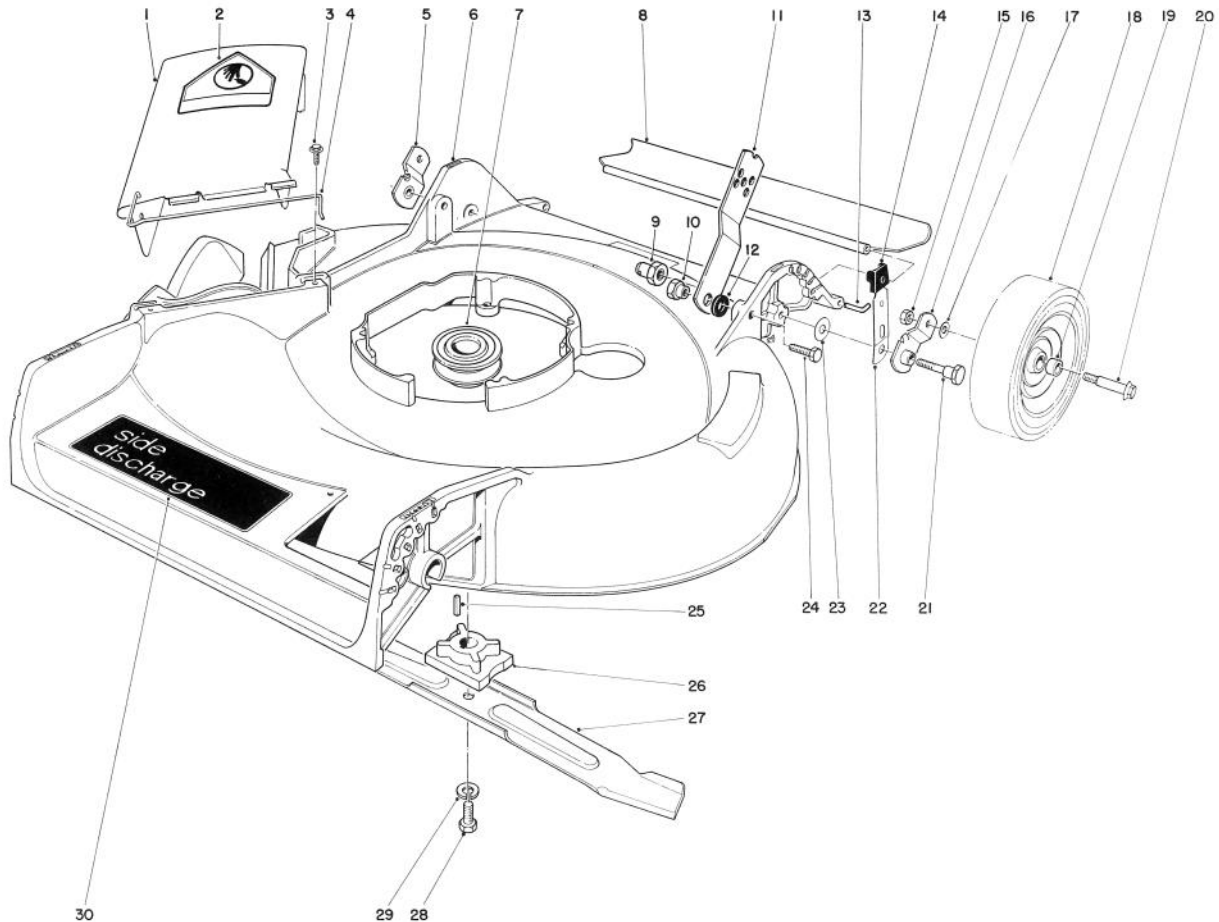




MODEL NO. 16780-3000001 & UP

PARTS CATALOG

21" S.P. SIDE DISCHARGE



HOUSING ASSEMBLY

Ref. No.	Part No.	Description	No. Used
1	27-7817	Deflector Assembly (Incl. Ref. #2 & 4)	1
2	39-5770	Decal — Danger	1
3	46-6811	Screw w/Washer	2
4	20-2640	Spring Hinge	1
5	20-2130	Pivot Arm Assembly "B"	1
6	11-4639	Housing — 21"	1
7	46-7910	Pulley — Driver	1
8	22-4950	Shield — Rear	1
9	12-2080	Nut — Shoulder	2
10	27-6520	Nut — Shoulder	2
11	27-7070	Latch — Handle	2
12	3-3287	Spacer — Handle Latch	2
13	33-3201	Rod — Rear Shield	1
14	25-7740	Knob — Spring Arm	2
15	32146-6	Locknut	2

Ref. No.	Part No.	Description	No. Used
16	20-2140	Pivot Arm Assembly "A"	1
17	40-1940	Washer — Wheel Bolt	2
18	44-0560	Wheel & Tire Assembly (Incl. Ref. #19)	2
19	27-6250	Bushing	4
20	27-6230	Wheel Bolt	2
21	3-0655	Screw — Pivot	2
22	25-8000	Spring Arm Assembly	2
23	5-4460	Washer — Pivot	2
24	322-6	Capscrew — Hex Hd.	2
25	5-7310	Key — Square	1
26	46-7800	Retainer Blade	1
27	20-2720	Blade — 21"	1
28	26-0671	Blade Screw	1
29	3253-22	Lockwasher	1
30	44-0440	Decal — Side Discharge	1
*	11-3249	Loose Parts	1

*Not Illustrated

COPYRIGHT © ALL RIGHTS RESERVED

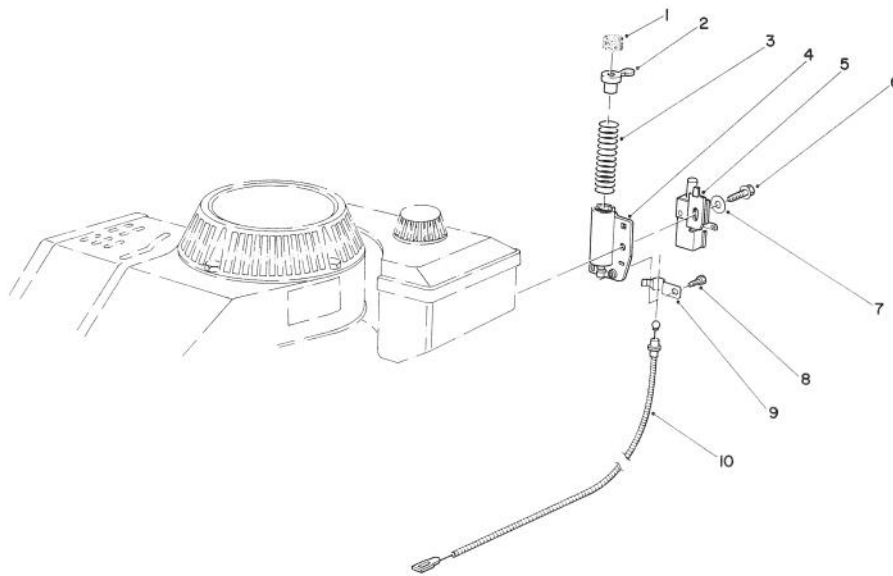
The Toro Company — 1983

MINNEAPOLIS, MN 55420 — U.S.A.

PRICE \$1.00



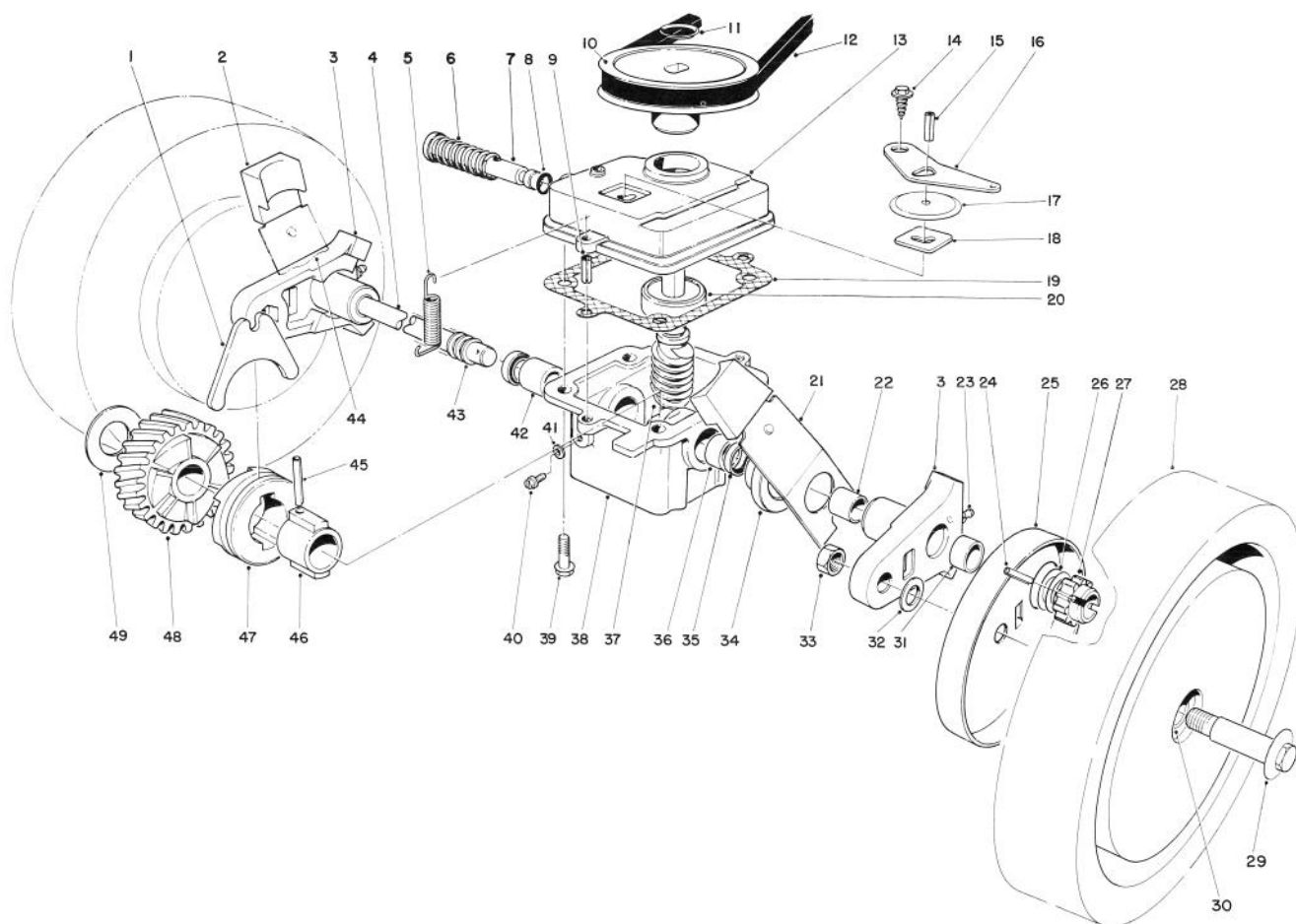
Ref. No.	Part No.	Description	No. Used
14	81-0080	Plug — Button	1
15	81-0110	Air Cleaner	1
16	46-0071	Screw — Washer Head	1
19	81-0140	Deflector	1
20	46-0400	Locknut	2
21	81-0100	Foam Element — Air Cleaner	1
22	81-0120	Cover — Air Cleaner	1
23	3234-20	Capscrew — Hex Head	4
24	46-5610	Clamp — Cable	1
25	32144-11	Screw — Thread Forming	1
26	46-4780	Cover — Belt	1
27	12-5450	Screw — Thread Forming	2



BRAKE ASSEMBLY

Ref. No.	Part No.	Description	No. Used
1		Pad — Friction	1
2	47-7350	Plunger & Pad Assembly (Incl. Ref. #1)	1
3	46-9130	Spring — Compression	1
4	46-5840	Tube	1
5	47-6520	Switch — Push Button	1

Ref. No.	Part No.	Description	No. Used
6	11-9760	Screw — Self Tapping	1
7	3256-22	Washer — Plain	1
8	12-5450	Screw — Thread Forming Hex Washer Hd.	1
9	46-6530	Cable Clamp	1
10	43-4533	Cable — Brake	1

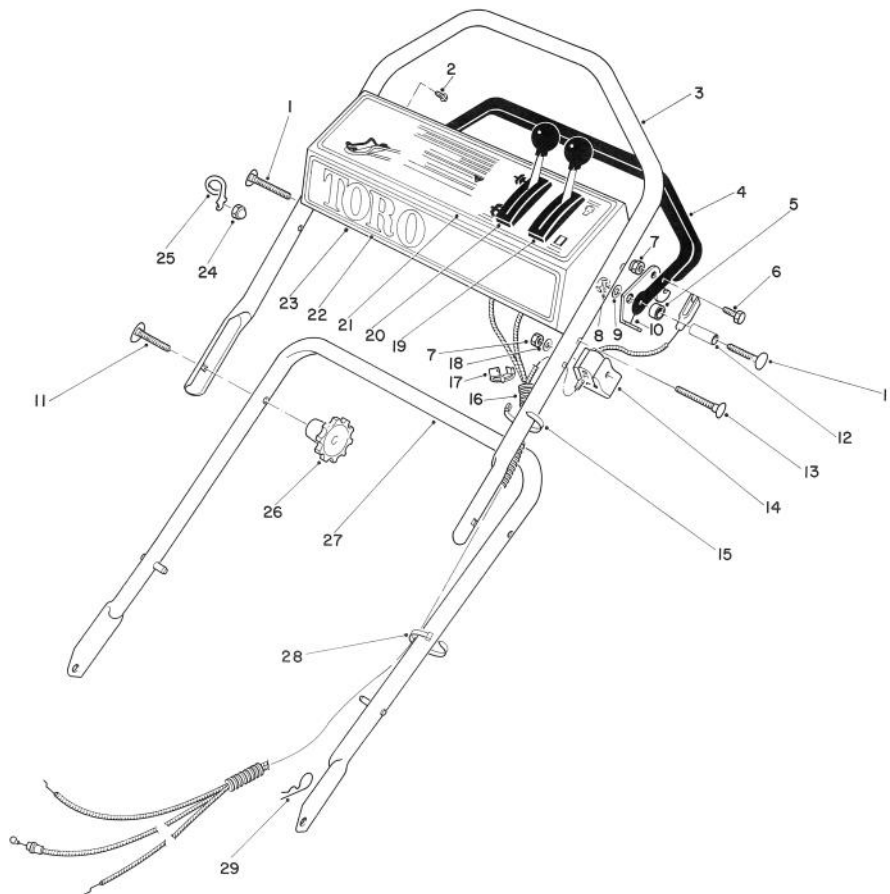


GEAR CASE ASSEMBLY

Ref. No.	Part No.	Description	No. Used
1	5-3247	Shifter Fork	1
2	25-7740	Knob Arm	2
3	38-2220	Pivot Arm (Incl. Ref.#22,23&31)	2
4	37-9440	Drive Shaft	1
5	17-4490	Spring — Belt Tension	1
6	3-0731	Spring	1
7	46-8240	Shifter Rod	1
8	237-137	"O" — Ring	1
9	32121-1	Roll Pin	2
10	18-9760	Pulley	1
11	3290-346	Push On Retainer	1
12	5-4505	V-Belt	1
13	39-1100	Gear Case Cover	1
14	32140-64	Screw — Self Tapping	1
15	32121-23	Roll Pin	1
16	5-3252	Shifter Arm	1
17	3-2615	Transmission Dust Cover	1
18	3-0681	Latch Plate	1
19	36-1000	Gasket — Gear Case	1
20	47-7250	Ball Bearing	1
21	25-7930	Spring Arm Assembly L.H.	1
22	256-206	Bushing	2
23	302-56	Grease Fitting	2
24	32121-98	Pin — Coil	2
25	18-9820	Wheel Cover	2
26	46-6510	Thrust Washer	4
27	46-5930	Pinion Gear	2

Ref. No.	Part No.	Description	No. Used
28	44-0570	Wheel & Tire Assembly (Incl. Ref. #30)	2
29	27-6230	Wheel Bolt	2
30	27-6250	Bushing — Wheel	4
31	256-1	Bushing	2
32	40-1940	Washer — Wheel Bolt	2
33	32146-6	Nut	2
34	3-2646	End Cap	2
35	47-6730	Oil Seal	2
36	47-2890	Bushing	1
37	8-5679	Worm Shaft & Gear (Incl. Ref. #48)	1
38	8-0479	Gear Case (Incl. Ref. # 35-36 & 42)	1
39	11-9760	Screw	4
40	28-1550	Screw Nylon	1
41	46-9640	Gasket	1
42	47-2900	Bushing	1
43	24-7920	Cover Drive Shaft	1
44	25-7920	Spring Arm Assembly R.H.	1
45	32121-88	Coil Pin	1
46	3-0721	Sleeve	1
47	19-5660	Clutch Jaw	1
48		Helical Gear	1
49	3-0724	Thrust Washer	1
*	11-4149	Gear Case Assembly Complete	1

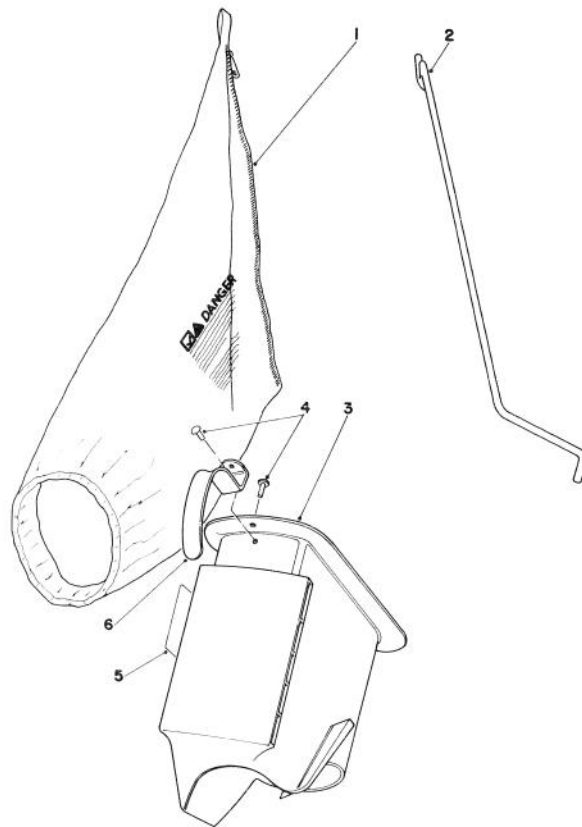
*Not Illustrated



HANDLE ASSEMBLY

Ref. No.	Part No.	Description	No. Used
1	46-6433	Screw — Handle	1
2	32104-76	Screw — Self Tapping	3
3	46-5410	Handle — Upper	1
4	46-5560	Control Bar Assembly	1
5	46-6240	Spacer — Nylon	1
6	321-5	Capscrew	1
7	3296-42	Locknut	2
8	3296-47	Locknut	2
9	3256-23	Washer	2
10	46-7950	Lever — Control	1
11	17-9421	Screw — Handle	4
12	46-5580	Bushing — Powdered Metal	2
13	46-6432	Screw — Handle	1
14	46-6980	Support — Cable	1
15	3290-381	Cable Tie	1
16	46-6441	Cover — Control Cable	1
17	2412-50	Clip	2
18	3256-22	Washer	1

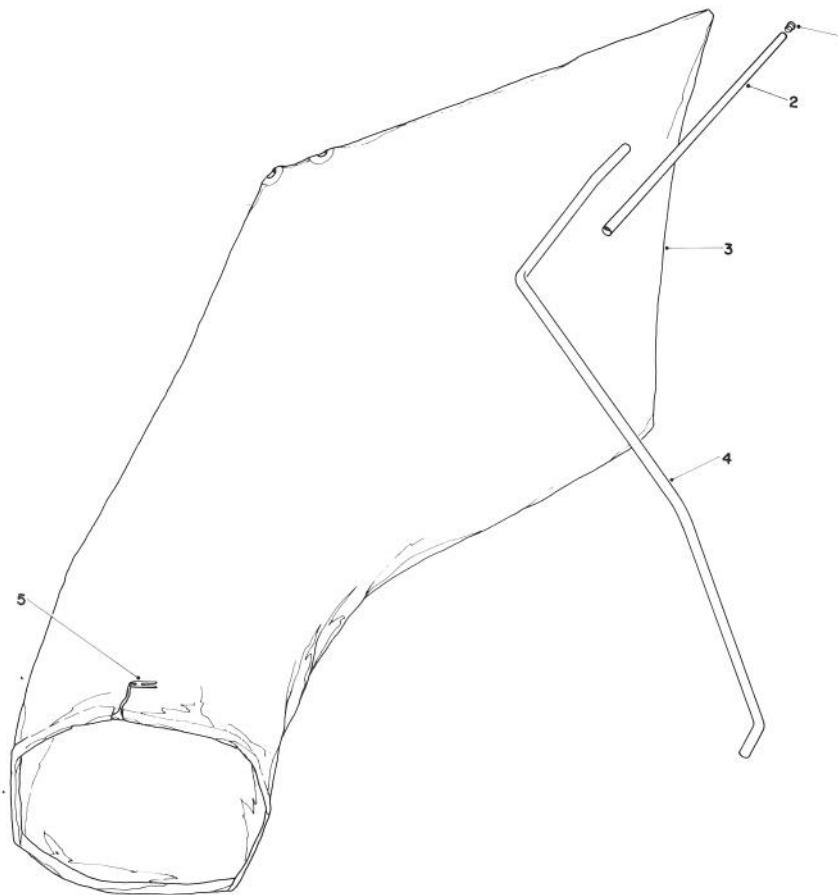
Ref. No.	Part No.	Description	No. Used
19	46-6040	Control — Traction Bend Type 3 Sheath Lg. 53" (134.6 cm) Wire Lg. 2-1/16" (5.2 cm)	1
20	46-8001	Control — Choke	1
21	46-7990	Decal — Instructions	1
22	46-7380	Decal — Toro	1
23	11-5179	Panel — Control (Incl. Ref. #21)	1
24	32111-7	Acorn Nut	1
25	46-8080	Guide — Rope	1
26	19-4050	Handle — Knob	2
27	49-0120	Lower Handle Assembly	1
28	3290-378	Cable Tie	1
29	3290-255	Hair Pin Cotter	2



BAGGING KIT NO. 47-6510 (OPTIONAL)

Ref. No.	Part No.	Description	No. Used
1	6-0929	Grass Bag	1
2	47-5830	Bag Rod	1
3	6-1089	Grass Chute (Incl. Ref. #4&6)	1

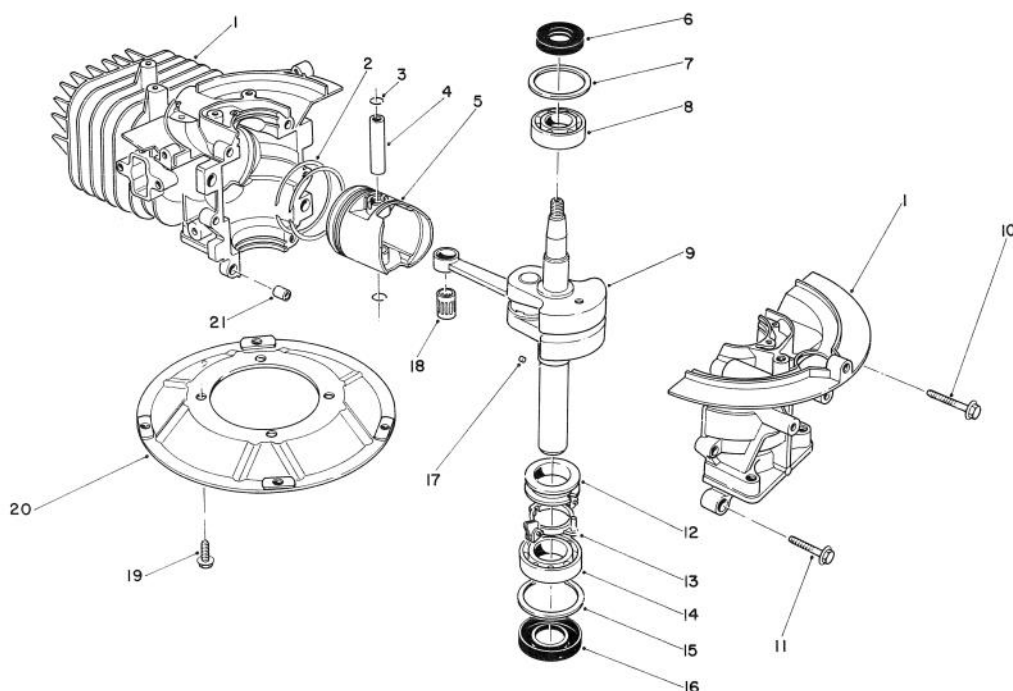
Ref. No.	Part No.	Description	No. Used
4	3295-26	Rivet	2
5	36-5230	Decal — Bag Chute	1
6	20-4650	Handle Chute	1



GIANT BAGGING KIT NO. 29-9750 (OPTIONAL)

Ref. No.	Part No.	Description	No. Used
1	2410-29	Cap	1
2	29-7000	Tube 25"	1
3	8-4719	Bag (Incl. Ref. #5)	1

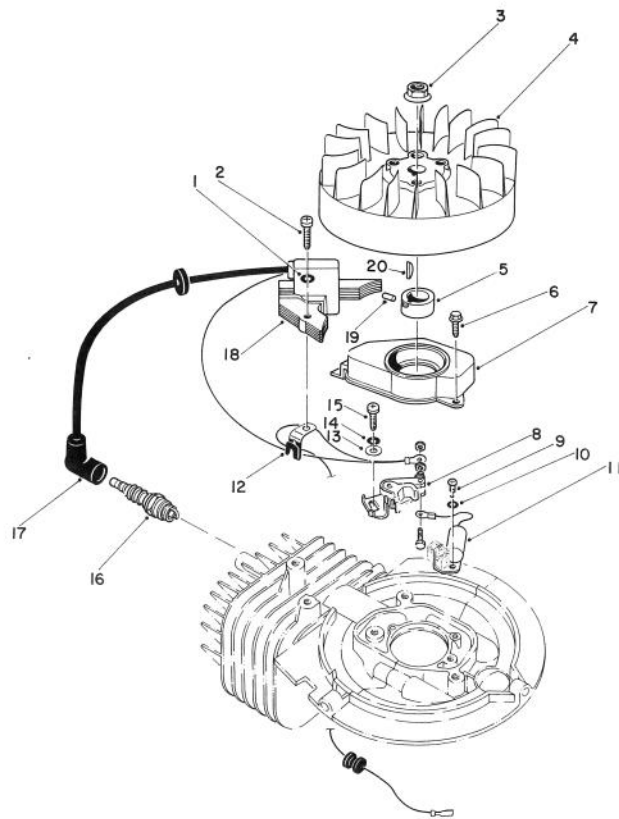
Ref. No.	Part No.	Description	No. Used
4	22-4820	Hanger Rod	1
5	3-2781	Bag Cord Fasteners	1



CRANKSHAFT ASSEMBLY

Ref. No.	Part No.	Description	No. Used
1	81-0510	Crankcase Assembly	1
2	81-0590	Ring Set	1
3	81-0620	Circlip	2
4	81-0600	Pin — Piston 12 mm dia.	1
5	81-0580	Piston — 58 mm	1
6	81-0720	Oil Seal — Upper	1
7	81-0710	Thrust Washer — Upper	1
8	81-0690	Bearing — Upper — 20mm	1
9	81-1550	Crankshaft Assembly	1
10	81-0550	Bolt (35mm Lg.)	1
11	81-0540	Bolt (30mm Lg.)	2

Ref. No.	Part No.	Description	No. Used
12	81-0770	Spacer — Governor	1
13	81-0750	Bracket — Arm Governor	1
14	81-0700	Bearing — Lower 25mm	1
15	81-0730	Thrust Washer — Lower	1
16	81-0740	Oil Seal — Lower	1
17	81-0760	Pin — 3mm dia. x 5mm long	1
18	81-0610	Bearing — Wrist Pin	1
19	81-0570	Bolt	4
20	81-0560	Plate — Mounting	1
21	81-0520	Pin — Crankcase Dowel	2

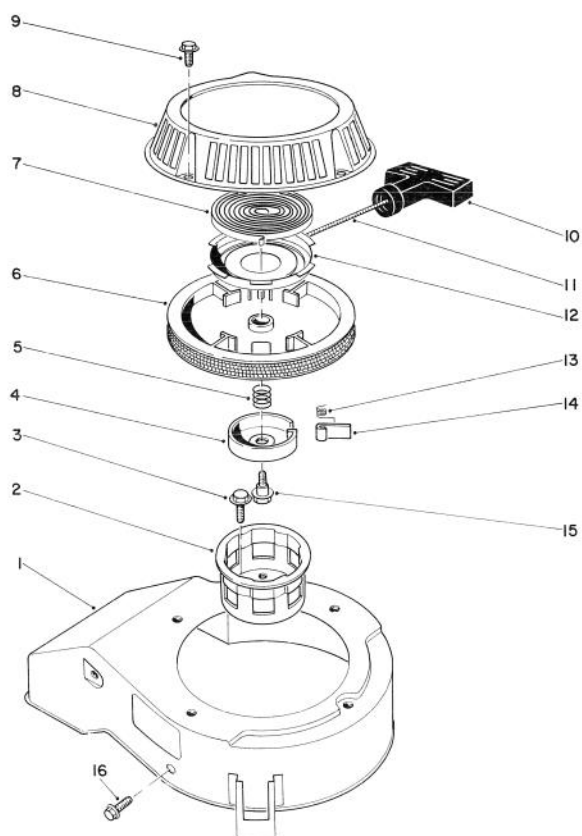


FLYWHEEL & MAGNETO ASSEMBLY

Ref. No.	Part No.	Description	No. Used
1	81-1450	Lockwasher	1
2	81-1440	Screw	1
3	81-1330	Nut	1
4	81-1310	Flywheel — Magneto	1
5	81-1460	Cam — Contact Point	1
6	81-1350	Bolt — Self Tapping	1
7	81-1340	Cover — Contact Point	1
8	81-1360	Point Assembly — Contact	1
9	81-1410	Screw	1
10	81-1420	Lockwasher	1
11	81-1400	Condenser	1

Ref. No.	Part No.	Description	No. Used
12	81-1480	Clamp	1
13	81-1390	Washer — Plain	1
14	81-1380	Lockwasher	1
15	81-1370	Screw — Phillips Hd.	1
16	81-0180	Spark Plug	1
17	81-1500	Cap — Spark Plug	1
18	81-1430	Coil Assembly — Ignition	1
19	81-0760	Pin	1
20	81-1320	Key — Aluminum Woodruff	1
*	81-1540	Tune Up Kit (Incl. Ref. #8 & 11)	1
*	41-7650	Puller — Flywheel	1
*	41-7900	Timing Tester	1

*Not Illustrated

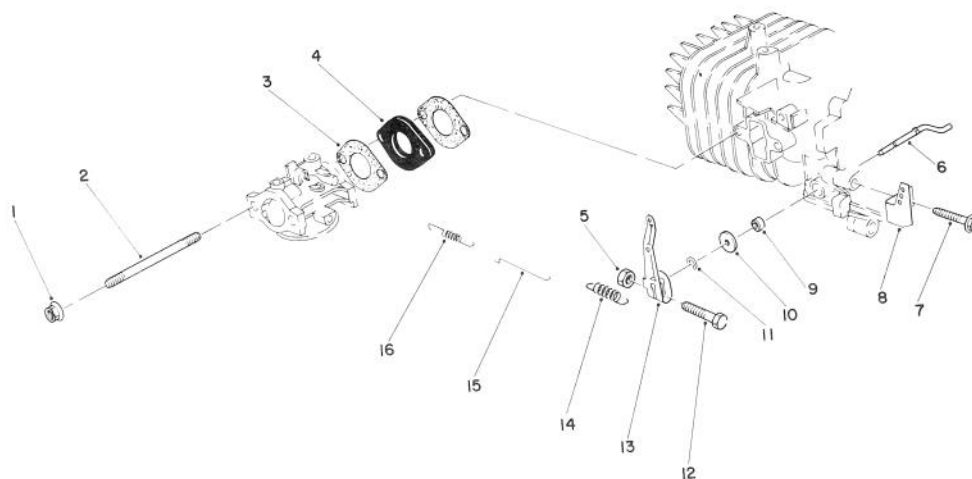


RECOIL ASSEMBLY

Ref. No.	Part No.	Description	No. Used
1	81-1160	Cover — Cooling Fan	1
2	81-1290	Cup — Starter Pulley	1
3	81-1300	Bolt	3
4	81-1250	Retainer	1
5	81-1240	Spring — Compression	1
6	81-1210	Reel — Rope Pulley	1
7	81-1200	Spring — Recoil	1
8	81-1190	Case	1
9	81-1280	Bolt	4

Ref. No.	Part No.	Description	No. Used
10	81-1630	Handle — Recoil	1
11	81-1270	Rope	1
12	81-1640	Retainer Cup — Recoil Spring	1
13	81-1220	Spring — Dog	2
14	81-1230	Dog	2
15	81-1260	Bolt	1
16	81-1170	Bolt	3
*	81-1180	Starter Assembly (Incl. Ref. #4-15)	1

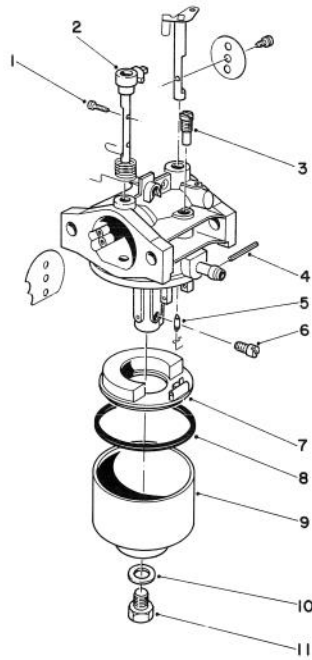
*Not Illustrated



GOVERNOR ASSEMBLY

Ref. No.	Part No.	Description	No. Used
1	46-0400	Nut	2
2	81-0800	Stud-Bolt — Carburetor	2
3	81-0780	Gasket — Carburetor	2
4	81-0790	Insulator — Carburetor	1
5	81-0900	Nut	1
6	81-0840	Shaft — Governor	1
7	81-0530	Bolt (25mm Lg.)	3
8	81-0930	Bracket — Governor Spring	1

Ref. No.	Part No.	Description	No. Used
9	81-0850	Oil Seal	1
10	81-0860	Washer	1
11	81-0870	E-Ring	1
12	81-0890	Bolt	1
13	81-0880	Lever — Throttle Control	1
14	81-0920	Spring	1
15	81-0910	Rod — Carburetor	1
16	81-0940	Spring (L-31) 3000 RPM	1

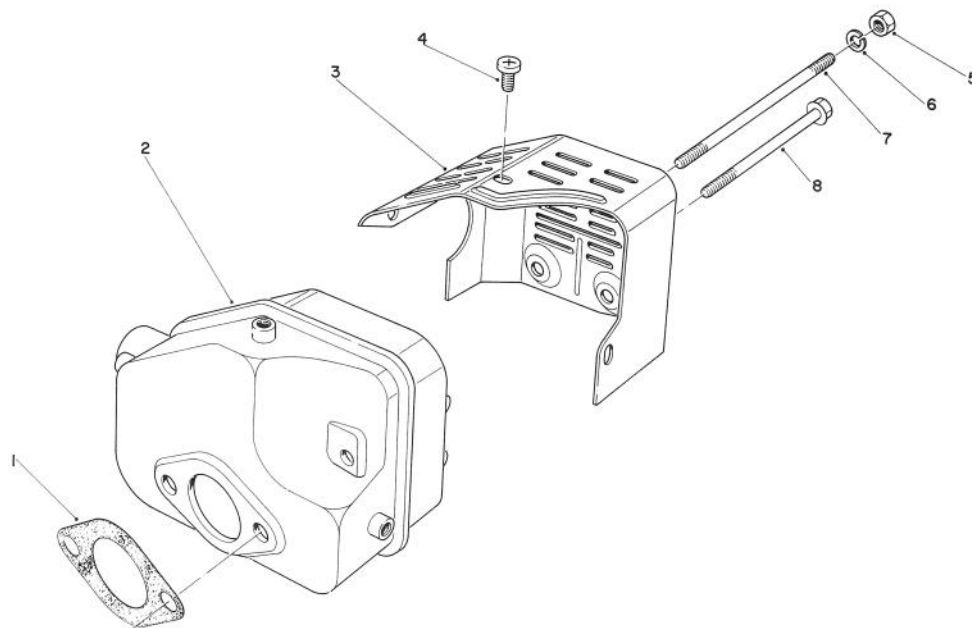


CARBURETOR ASSEMBLY

Ref. No.	Part No.	Description	No. Used
1	81-0990	Screw	2
2	81-1650	Shaft — Choke	1
3	81-1030	Jet — Pilot (40)	1
4	81-0980	Pin	1
5	81-1600	Needle Valve & Spring Wire	1
6	81-1040	Jet — Main (80)	1
*	81-1050	Jet — Main (77.5) High Altitude (above 6,000 ft.) (Optional)	1

Ref. No.	Part No.	Description	No. Used
7	81-0970	Float	1
8	81-1010	Gasket	1
9	81-1610	Float — Bowl	1
10	81-1020	Gasket — Bowl Screw	1
11	81-1000	Bolt	1
*	81-1620	Carburetor Kit (Incl. Ref. #3, 5-6, 8 & 10)	1
*	81-0960	Carburetor Assy. Complete	1

*Not Illustrated



MUFFLER ASSEMBLY

Ref. No.	Part No.	Description	No. Used
1	81-1080	Gasket — Muffler	1
2	81-1090	Muffler	1
3	81-1130	Cover — Muffler	1
4	81-1140	Screw — Phillips Hd.	3
5	81-1110	Nut	2

Ref. No.	Part No.	Description	No. Used
6	81-1120	Washer — Lock	2
7	81-1100	Bolt	2
8	81-1150	Bolt — Self Tapping	1
*	81-0200	Spark Arrester	1

*Not Illustrated

PRODUCT CHANGES

In an effort to make improvements available to TORO owners as quickly as possible, minor changes are incorporated into Toro's products from time to time that do not become immediately shown in the Parts Catalog. If such a change apparently has been made in your unit, which is not reflected in your manual, see your TORO Distributor or his Authorized TORO Service Dealer for information and part numbers.

IDENTIFICATION AND ORDERING

MODEL AND SERIAL NUMBERS

The Mower has two identification numbers: a model number and a serial number. The two numbers are stamped on a decal which is located on the mower housing between the rear wheels. In any correspondence concerning the mower, supply model and serial numbers to assure that correct information and replacement parts are obtained.

To order replacement parts from an Authorized TORO Service Dealer, supply the following information:

1. Model and serial numbers of the mower.
2. Part number, description, and quantity of part(s) desired.

Note: Do not order by reference number if a parts catalog is being used; use the PART NUMBER.

The Toro Promise

Two Cycle Rotary Mower A Limited Warranty

The Toro Company promises to repair your TORO Product if defective in materials or workmanship. The following time periods from the date of purchase apply:

Mower (Residential Use)	1 Year
Engine Only (Residential Use)	2 Years
Mower and Engine (Commercial Use)	45 Days

The costs of parts and labor are included, but the customer pays the transportation costs. Just return any residential product to an Authorized TORO Service Dealer or TORO Distributor.

Should you feel your TORO mower is defective and wish to rely on The Toro Promise, the following procedure is recommended:

1. Contact any Authorized TORO Service Dealer, TORO Master Service Dealer, or TORO Distributor (the Yellow Pages of your telephone directory is a good reference source).
2. He will either instruct you to return the product to him or recommend another Authorized TORO Service outlet which might be more convenient.
3. Bring the product along with your original sales slip, or other evidence of purchase date, to the service dealer.
4. The servicing dealer will inspect the unit, advise you whether the product is defective and, if so, make all repairs necessary to correct the defect without extra charge to you.

If for any reason you are dissatisfied with the dealer's analysis of the defect or the service performed, you may contact us.

Write:

TORO Customer Service Department
8111 Lyndale Avenue South
Minneapolis, Minnesota 55420

The above remedy of product defects through repair by an Authorized TORO Service Dealer is the purchaser's sole remedy for any defect.

THERE IS NO OTHER EXPRESS WARRANTY. ALL IMPLIED WARRANTIES OF MERCHANTABILITY AND

FITNESS FOR USE ARE LIMITED TO THE DURATION OF THE EXPRESS WARRANTY.

Some states do not allow limitation on how long implied warranty lasts, so the above limitation may not apply to you.

This Warranty applies only to parts or components which are defective and does not cover repairs necessary due to normal wear, misuse, accidents, or lack of proper maintenance. Bent or broken crankshafts are normally due to abnormal use and are not covered by this warranty. Regular, routine maintenance of the unit to keep it in proper operating condition is the responsibility of the owner.

All warranty repairs reimbursable under The Toro Promise must be performed by an Authorized TORO Service Dealer using Toro approved replacement parts.

Repairs or attempted repairs by anyone other than an Authorized TORO Service Account are not reimbursable under The Toro Promise. In addition, these unauthorized repair attempts may result in additional malfunctions, the correction of which is not covered by warranty.

The Toro Company is not liable for indirect, incidental or consequential damages in connection with the use of the product including any cost or expense of providing substitute equipment or service during periods of malfunction or non-use.

Some states do not allow the exclusion of incidental or consequential damages, so the above exclusion may not apply to you.

This warranty gives you specific legal rights, and you may also have other rights which vary from state to state.

MAINTENANCE RECORD

[illegible]

MAINTENANCE RECORD

[illegible]