



Form No. 3469-788 Rev A

Count on it.

Parts Catalog

AutoSteer Kit

Multi Pro[®] 5800 Turf Sprayer with GeoLink[®]

Model No. 41636—Serial No. 415400000 and Up



Ordering Replacement Parts

To order replacement parts, please supply the part number, the quantity, and the description of each part desired.

Understanding Reference Numbers

Each identified part in an illustration has a reference number. The reference number for a part also appears in the parts list, along with other information about the part.

This catalog uses two special reference number formats, one to indicate parts in a service assembly and another to indicate the quantity of a given part in an illustration.

Service Assembly Reference Numbers

Parts in service assemblies have reference numbers in the form a:b. The a represents the reference number of the entire service assembly and the b represents a sequential number unique to each part within the service assembly.

For example, a wheel assembly might be identified by reference number 6, the tire by 6:1, the valve by 6:2, and the wheel by 6:3. When you order the assembly identified by reference number 6, you receive all parts identified by reference numbers 6:1, 6:2, and 6:3. However, you may also order any part individually. Reference numbers of this type appear in illustration and in parts lists.

Reference Numbers Indicating Quantity

In an illustration, if a reference number indicates more than one part, the reference number has the form nX y. The n represents the quantity of the part, the X is the multiplication symbol, and the y represents the reference number.

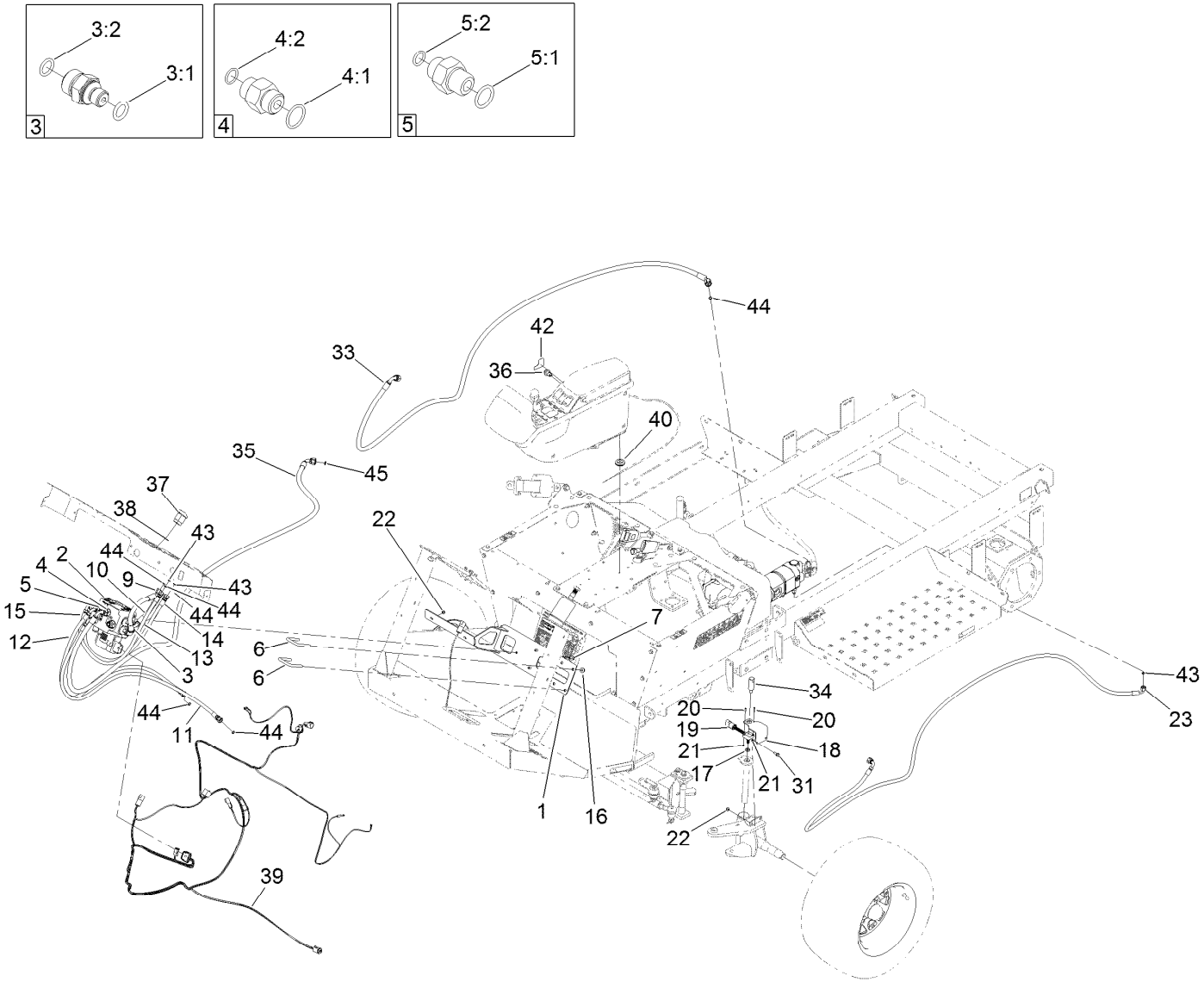
For example, in an illustration, the reference number 2X 37 means that two of the parts identified by reference number 37 are indicated.

Contents

Autosteering Assembly 4

Hydraulic Valve Assembly No. 137-4076 6

Autosteering Assembly

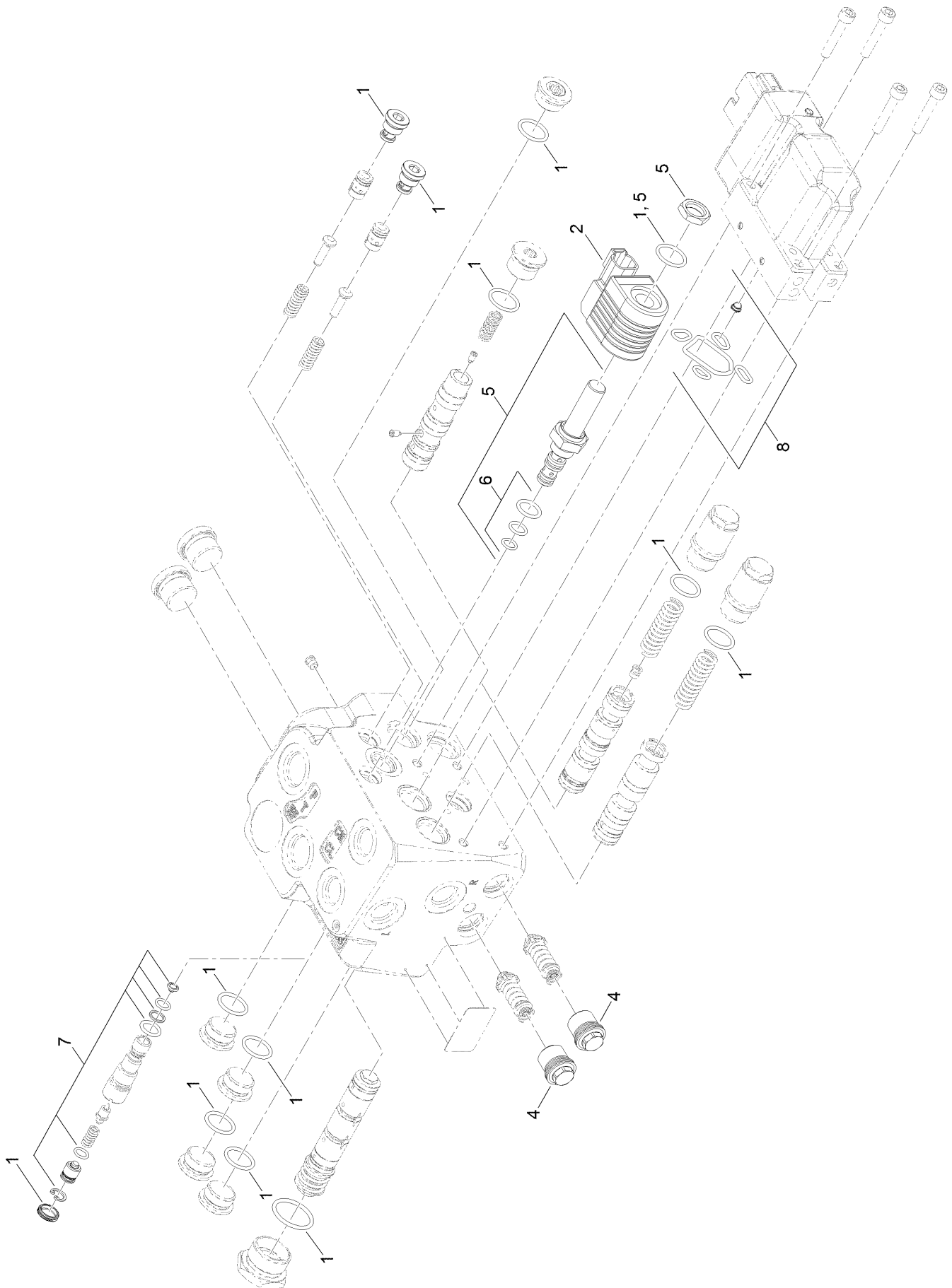


Autosteering Assembly (continued)

<i>Ref.</i>	<i>Part Number</i>	<i>Qty.</i>	<i>Description</i>	<i>Ref.</i>	<i>Part Number</i>	<i>Qty.</i>	<i>Description</i>
1	138-6159-03	1	Mount-Manifold	19	138-6252	1	Sensor-Rotary
2	137-4076	1	Valve-Steering Ehi	20	3290-313	2	Screw-SPH
3	138-6187	2	Fitting-STR	21	3296-52	2	Nut-Lock, NI
3:1	138-6247	1	Seal-Oring	22	119-6921	4	Nut-Hex, Flange
3:2	237-22	1	O-Ring	23	138-6194	1	Hose ASM
4	137-4294	4	Fitting-STR	31	3234-4	4	Screw-HHF
4:1	138-6249	1	O-Ring M22	33	138-6250	1	Hose ASM
4:2	237-30	1	O-Ring	34	138-6179	1	Tool-Alignment
5	137-4295	4	Fitting-STR	35	138-6256	1	Hose ASM
5:1	138-6248	1	O-Ring M18	36	125-7996	1	Switch-Pb, Momentary
5:2	237-22	1	O-Ring	37	95-8999	1	Switch-Rocker, On-None-On
6	104-9082	2	U-Bolt	38	161-4186	1	Decal-Transportation Switch
7	33104-016	3	Screw-HHF	39	122-1598	1	Harness-Wire, Autosteer
9	138-6153	1	Hose ASM	40	240-5	1	Grommet
10	138-6154	1	Hose ASM	42	138-6278	1	Decal-Engage Autoguide
11	138-6170	1	Hose ASM	43	237-21	3	O-Ring
12	138-6171	1	Hose ASM	44	237-22	6	O-Ring
13	138-6188	1	Hose ASM	45	237-30	1	O-Ring
14	138-6191	1	Hose ASM	99	117-2382	6	Plug-Plastic ●
15	138-6245	1	Hose ASM	99	3272-12	2	Pin-Cotter ●
16	104-8301	4	Nut-HF, NI	99	3272-18	1	Pin-Cotter ●
17	112-8617	1	Nut-Hex	99	340-152	1	Cap-HYD ●
18	138-6178-03	1	Bracket-Sensor				

● Not illustrated

Hydraulic Valve Assembly No. 137-4076



Hydraulic Valve Assembly No. 137-4076 (continued)

<i>Ref.</i>	<i>Part Number</i>	<i>Qty.</i>	<i>Description</i>
1	138-6270	1	Seal Kit
2	138-6271	1	Coil Kit
4	138-6273	1	Shock Valve Kit
5	138-6274	1	Cartridge Kit

<i>Ref.</i>	<i>Part Number</i>	<i>Qty.</i>	<i>Description</i>
6	138-6275	1	Spool Kit
7	138-6276	1	Relief Valve Kit
8	138-6277	1	Pve Kit



Count on it.