



Basket Tipper Kit for Reelmaster[®] 5500D Part No. 100–9945

Parts Catalog

Ordering Replacement Parts

To order replacement parts, please supply: the part number, the quantity, and the description of each part desired.

Understanding Reference Numbers

Each identified part in an illustration has a reference number. The reference number for a part also appears in the parts list, along with other information about the part.

This catalog uses two special reference number formats, one to indicate parts in a service assembly and another to indicate the quantity of a given part in an illustration.

Service Assembly Reference Numbers

Parts in service assemblies have reference numbers in the form **a:b**. The **a** represents the reference number of the entire service assembly and the **b** represents a sequential number unique to each part within the service assembly.

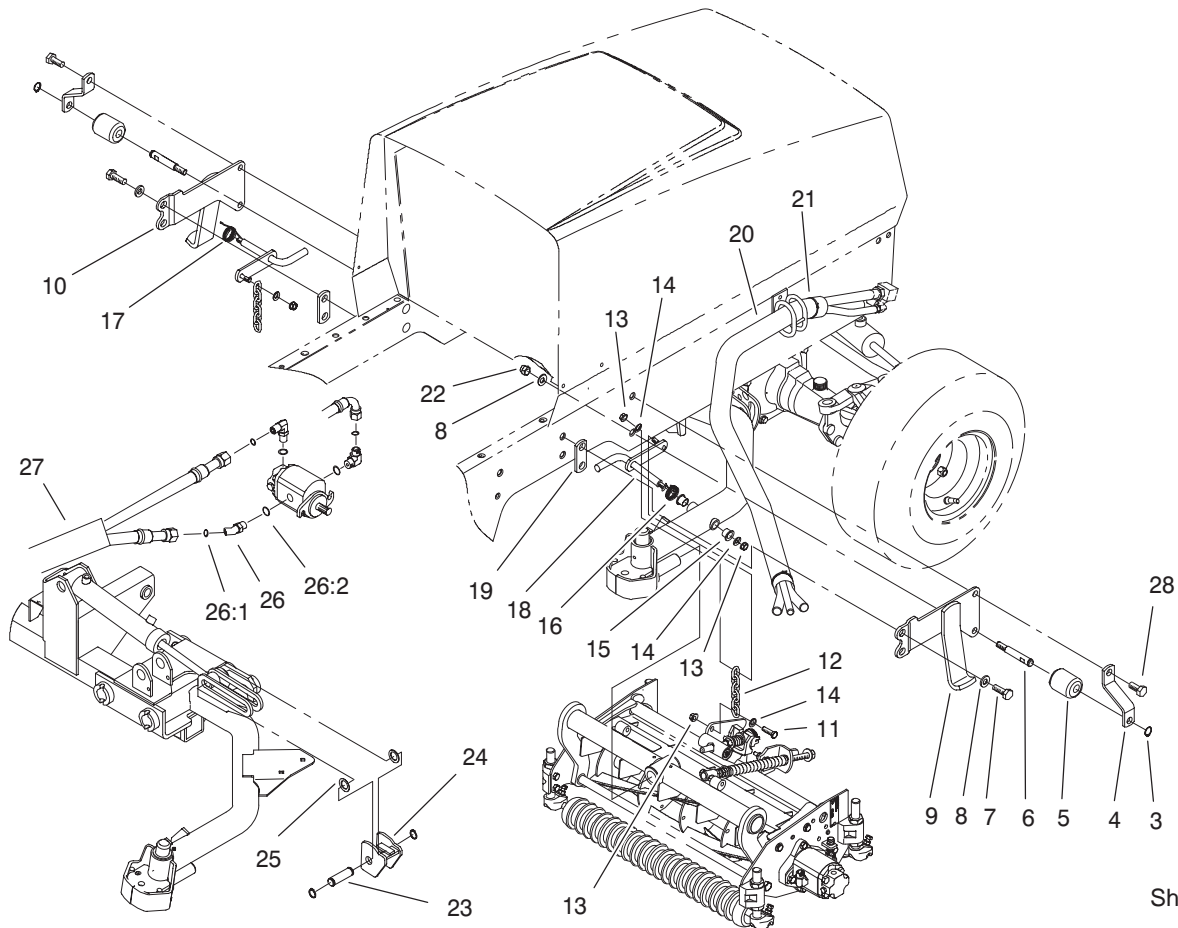
For example, a wheel assembly might be identified by reference number **6**, the tire by **6:1**, the valve by **6:2**, and the wheel by **6:3**. When you order the assembly identified by reference number **6**, you receive all parts identified by reference numbers **6:1**, **6:2**, and **6:3**. However, you may also order any part individually.

Reference numbers of this type appear in illustrations and in part lists.

Reference Numbers Indicating Quantity

In an illustration, if a reference number indicates more than one part, the reference number has the form **nX y**. The **n** represents the quantity of the part, the **X** is the multiplication symbol, and the **y** represents the reference number.

For example, in an illustration, the reference number **2X 37** means that two of the parts identified by reference number **37** are indicated.



Sheet No.:0

T-3591

Basket Tipper Assembly

Ref. No.	Part No.	Qty.	Description
3	32151-62	2	Ring-Retaining
4	100-9930-03	2	Bracket-Roller
5	100-9947	2	Roller-Reel
6	98-3934	2	Pin-Roller
7	325-6	4	Screw-HH
8	3256-26	6	Washer-Flat
9	100-9929-03	1	LH Tipper ASM
10	100-9928-03	1	RH Tipper ASM
11	323-7	2	Screw-HH
12	5-1096	2	Chain-Lift
13	3296-39	6	Nut-Lock, NI
14	3256-24	6	Washer-Flat
15	256-287	4	Bushing
16	104-1805	1	Spring-Torsion, LH
17	98-3929	1	Spring-Torsion
18	104-1800-03	2	Pivot Rod ASM
19	100-9936	2	Plate-Frame
20	99-5648	2	Sleeve-Protective
21	3290-379	6	Tie-Cable
22	3296-23	2	Nut-Lock, NI
23	100-9938	2	Pin-Cylinder
24	104-1803-03	2	Cylinder Stop ASM
25	3-6498	4	Washer-Thrust
26	340-101	1	Fitting-HYD, 90°
26:1	237-30	1	O-Ring
26:2	237-79	1	O-Ring

Ref. No.	Part No.	Qty.	Description
27	104-1817	1	Sleeve-Protective
28	3213-3	2	Screw-HH