



44in Snowthrower Conversion Kit XT Series Garden Tractors

Model No. 106-8259

Parts Catalog

Ordering Replacement Parts

To order replacement parts, please supply the part number, the quantity, and the description of each part desired.

Understanding Reference Numbers

Each Identified part in an illustration has a reference number. The reference number for a part also appears in the parts list, along with other information about the part.

This catalog uses two special reference number formats, one to indicate parts in a service assembly and another to indicate the quantity of a given part in an illustration.

Service Assembly Reference Numbers

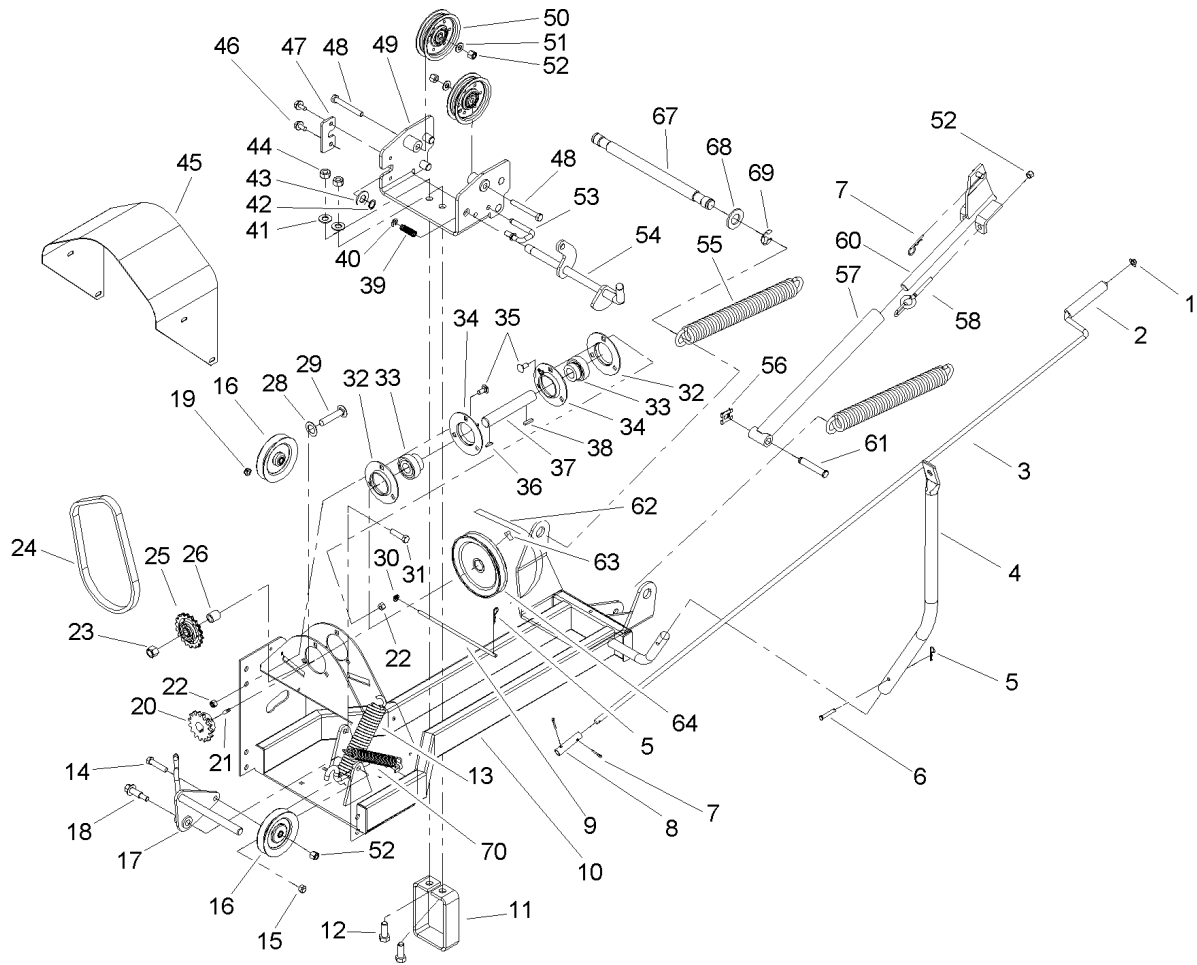
Parts in service assemblies have reference numbers in the form a:b. The a represents the reference number of the entire service assembly and the b represents a sequential number unique to each part within the service assembly.

For example, a wheel assembly might be identified by reference number 6, the tire by 6:1, the valve by 6:2, and the wheel by 6:3. When you order the assembly identified by reference number 6, you receive all parts identified by reference numbers 6:1, 6:2, and 6:3. However, you may also order any part individually. Reference numbers of this type appear in illustrations and in part lists.

Reference Numbers Indicating Quantity

In an illustration, if a reference number indicates more than one part, the reference number has the form nX y. The n represents the quantity of the part, the X is the multiplication symbol, and the y represents the reference number.

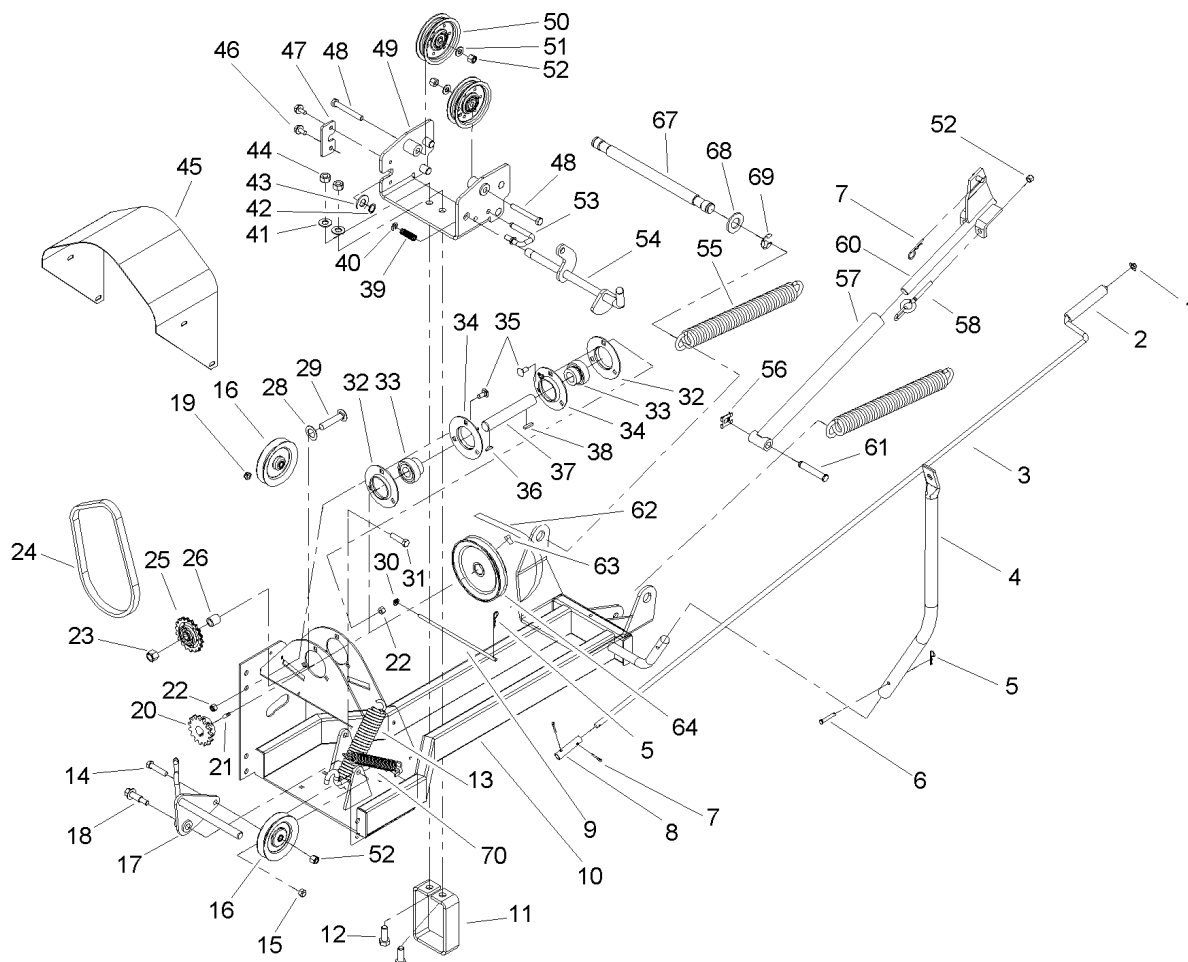
For example, in an illustration, the reference number 2X 37 means that two of the parts identified by reference number 37 are indicated.



Two Stage Snow Thrower Kit

Ref	Part No.	Qty.	Description
1	3290-320	1	Retainer-Push On
2	40-8230	1	Grip-Chute Control
3	106-9947	1	Rod-Chute
4	95-3864-03	1	Tube - Crank Support
5	9335044	2	Pin-Hair
6	283-66	1	Pin-Clevis
7	9335054	3	Pin-Hair
8	117538	1	Coupling
9	106-9922	1	Rod-Stop
10	106-8203-03	1	Frame ASM
11	106-8217-03	1	Plate-Guide
12	3213-2	2	Screw-HH
13	4629	1	Spring
14	323-9	1	Screw-HH
15	108881	1	Nut
16	95-7668	2	Pulley-V, Idler
17	106-9928	1	Belt Tension ASM
18	62-1330	1	Bolt-Shoulder
19	3296-59	1	Nut-Lock, NI
20	117338	1	Sprocket-15 T
21	3241-5	2	Screw-Set
22	3296-29	6	Nut-Lock, NI
23	3296-23	1	Nut-Lock, NI
24	107-3650	1	Chain-Drive

Ref	Part No.	Qty.	Description
25	93-1614	1	Sprocket-Idler
26	107-3678	1	Spacer-Idler
28	1278	1	Washer
29	3233-27	1	Screw-CARR
30	3290-337	1	Nut-Speed
31	3211-6	1	Screw-HH
32	119020	2	Flange-Relube
33	110569	2	Bearing And Collar
34	110568	2	Flange
35	3230-1	6	Bolt-CARR
36	937221	1	Key-Hi Pro
37	106-9923	1	Shaft-Jack
38	6366	1	Key
39	8616	1	Spring
40	105797	1	Ring-Retaining
41	3256-26	2	Washer-Flat
42	32151-62	1	Ring-Retaining
43	3256-27	1	Washer-Flat
44	3217-9	2	Nut-Hex
45	106-9934-03	1	Belt Cover ASM
46	32144-14	2	Screw-HWH
47	106-8222	1	Plate-Keeper
48	323-14	2	Screw-HH
49	106-8214-03	1	Pulleybox



Two Stage Snow Thrower Kit (continued)

Ref	Part No.	Qty.	Description				
50	116859	2	Pulley-Flat Idler				
51	3256-24	2	Washer-Flat				
52	3296-39	5	Nut-Lock, NI				
53	106-4095	1	Rod-Catch, Midhitch				
54	106-8218	1	Spring Lever ASM				
55	106-9945	2	Spring-Extension				
56	95-4064	1	Clip-Pin				
57	106-9931-03	1	Rod-Lift				
58	107-8465	2	Lift Chain ASM				
60	106-9946-03	1	Lift Rod ASM				
61	98-1640	1	Pin-Clevis				
62	107-8486	1	V-Belt				
63	3242-2	2	Screw-SQH				
64	92-5769	1	Pulley - Gear Box				
67	106-9926	1	Shaft-Pivot				
68	3256-29	2	Washer-Flat				
69	32151-103	2	Ring-Snap				
70	80-6610	1	Spring-Extension				

