



Z253

Z Master[®] with 62in SFS Side Discharge Mower

Model No. 74225—230006001 and Up

Parts Catalog

Ordering Replacement Parts

To order replacement parts, please supply: the part number, the quantity, and the description of each part desired.

Understanding Reference Numbers

Each identified part in an illustration has a reference number. The reference number for a part also appears in the parts list, along with other information about the part.

This catalog uses two special reference number formats, one to indicate parts in a service assembly and another to indicate the quantity of a given part in an illustration.

Service Assembly Reference Numbers

Parts in service assemblies have reference numbers in the form **a:b**. The **a** represents the reference number of the entire service assembly and the **b** represents a sequential number unique to each part within the service assembly.

For example, a wheel assembly might be identified by reference number **6**, the tire by **6:1**, the valve by **6:2**, and the wheel by **6:3**. When you order the assembly identified by reference number **6**, you receive all parts identified by reference numbers **6:1**, **6:2**, and **6:3**. However, you may also order any part individually.

Reference numbers of this type appear in illustrations and in part lists.

Reference Numbers Indicating Quantity

In an illustration, if a reference number indicates more than one part, the reference number has the form **nX y**. The **n** represents the quantity of the part, the **X** is the multiplication symbol, and the **y** represents the reference number.

For example, in an illustration, the reference number **2X 37** means that two of the parts identified by reference number **37** are indicated.

Contents

Description	Page	Description	Page
Front Frame Assembly	4	Group 2 – Crankcase Assembly	
Caster and Wheel Assembly	5	Kohler CH23S–76569	26
Rear Frame and Wheel Assembly	6	Group 3 – Oil Pan/Lubrication Assembly	
Brake and Wheel Hub Assembly	7	Kohler CH23S–76569	27
Steering Control Assembly	8	Group 4 – Head/Valve/Breather Assembly	
Hydraulic System Assembly	9	Kohler CH23S–76569	28
Seat Assembly	11	Group 5 – Ignition/Electrical Assembly	
Seat Assembly No. 1–633705	12	Kohler CH23S–76569	30
Frame and Deck Assembly	13	Group 6 – Blower Housing Assembly	
Idler Assembly	14	Kohler CH23S–76569	31
Stand Assembly	15	Group 7 – Starter Assembly	
Clutch Assembly	16	Kohler CH23S–76569	32
Shield Assembly	17	Group 8 – Fuel System Assembly	
Fuel System Assembly	18	Kohler CH23S–76569	33
Electrical System Assembly	19	Group 9 – Engine Control Assembly	
Deck and Wheel Gage Assembly	20	Kohler CH23S–76569	34
Deck Assembly No. 106–5864	21	Group 10 – Air Intake/Filtration Assembly	
Spindle and Pulley Assembly	22	Kohler CH23S–76569	35
Belt and Idler Arm Assembly	23	Group 11 – Exhaust Assembly	
Electrical Schematic	24	Kohler CH23S–76569	36
Group 1 – Crankshaft Assembly			
Kohler CH23S–76569	25		

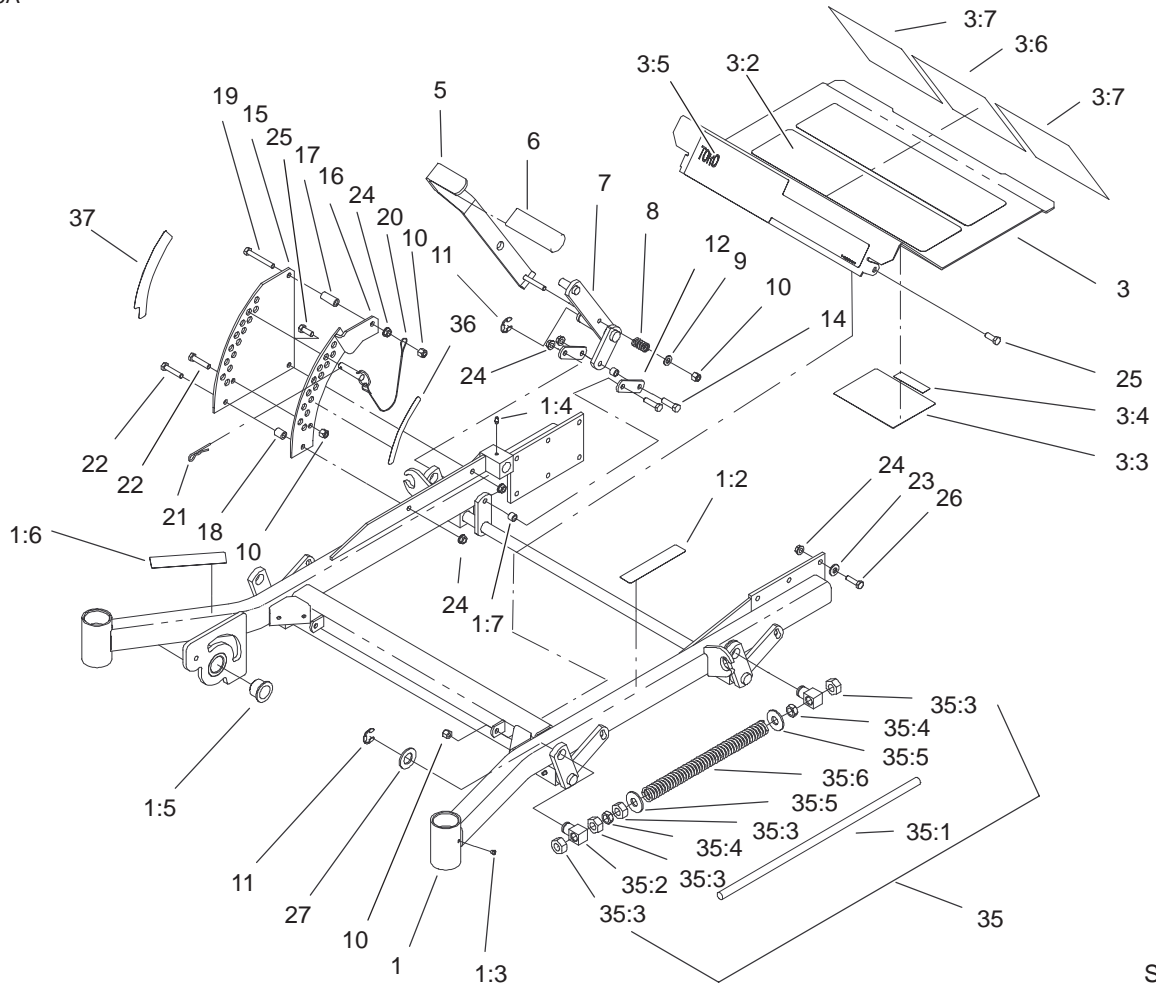
Accessories

Description	Model / Part No.	Description	Model / Part No.
Suspension Seat Kit	99–8522	Spark Arrester Kit	105–1672
Deck Lift Assist	100–4336	Filter Minder	99–4664
Striping Kit	30163	DFS Bagger	78491
Hitch Kit	99–8925	Boot and Tube Kit (For DFS Bagger)	78495
Atomic Blade Assembly	104–1303	ROPS	TORO Dealer
Z Recycler Kit (62in)	100–9600		

Part Description Abbreviations

Part descriptions in this catalog may include the following abbreviations.

Abbreviation	Meaning	Abbreviation	Meaning
AR	as required	HWHTF	hex washer head thread forming
ASM	assembly	INC	incorporated
CARR	carriage	LH	left hand
DEG	degrees	NI	nylon insert
FH	flat head	PPH	Phillips pan head
GA	gauge	PTH	Phillips truss head
HF	hex flange	PTO	power take off
HH	hex head	RH	right hand
HHF	hex head flange	SFH	slotted fillister head
HLH	hex lag head	SHH	slotted hex head
HJ	hex jam	SQH	square head
HOC	height-of-cut	SHWH	slotted hex washer head
HS	hex socket	SPH	slotted pan head
HSBH	hex socket button head	SRH	slotted round head
HSFH	hex socket flat head	STD	standard
HSH	hex socket head	TAP	self tapping
HWH	hex washer head	TTH	Torx truss head



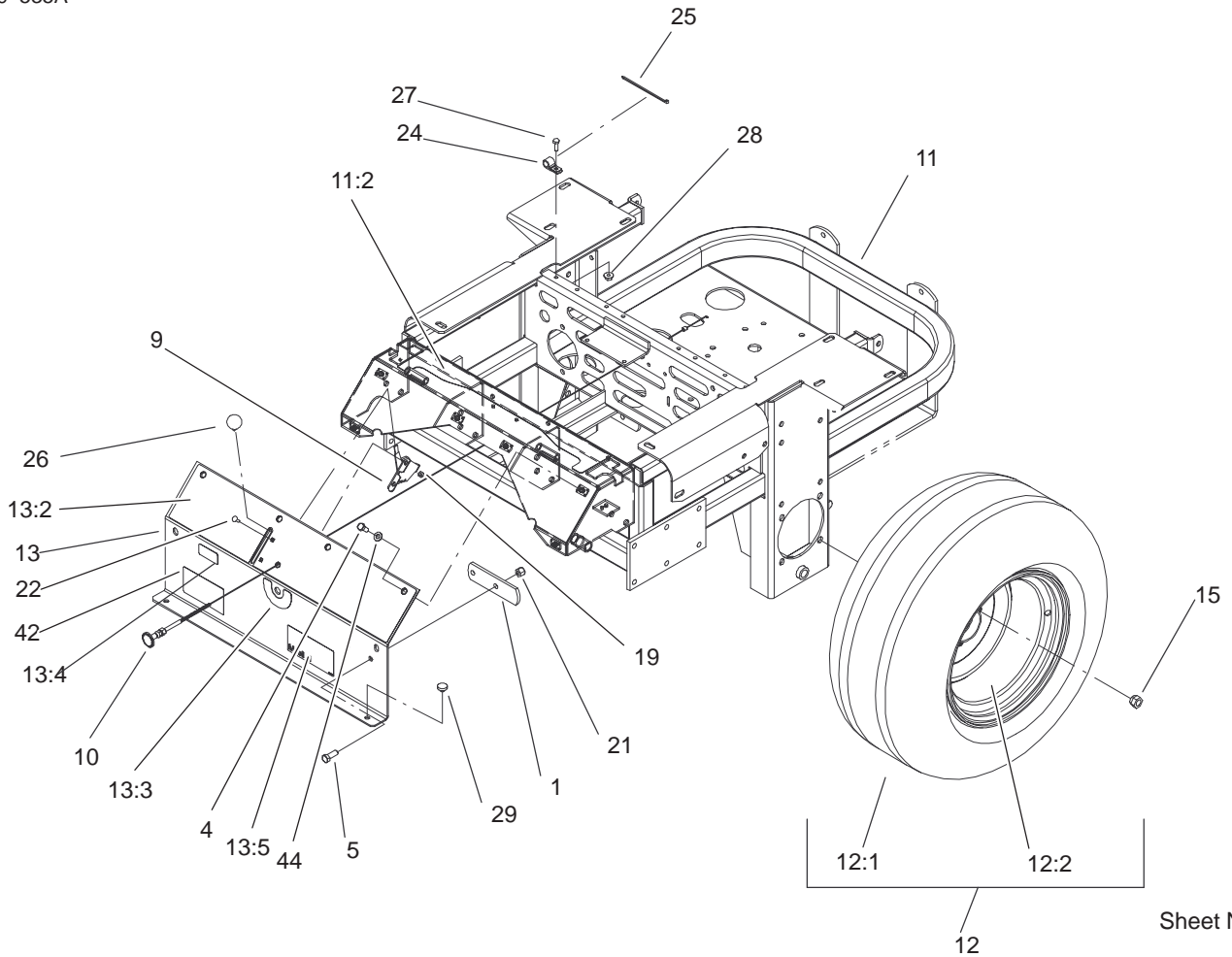
Sheet No.:2

Front Frame Assembly

Ref. No.	Part No.	Qty.	Description
1	104-5132	1	Frame ASM
1:2	1-633818	1	Decal-Warning
1:3	1-811010	2	Plug
1:4	302-19	5	Fitting-Grease
1:5	94-1291	2	Bushing-Special
1:6	104-7759	1	Decal-Warning
1:7	103-1918	1	Bushing
3	106-6587	1	Floorpan ASM
3:2	1-633553	2	Pad-Antiskid
3:3	1-633766	1	Decal-Check
3:4	98-5954	1	Decal-Missing, Cover
3:5	1-633737	1	Decal-Z Master
3:6	106-6571	1	Decal - Danger, Slope
3:7	106-6572	2	Pad, Anti Skid
5	103-2083-03	1	Lever-Lift
6	1-633295	1	Grip-Lever, Lift
7	103-2064-03	1	Arm-Lift, Deck
8	1-633325	1	Spring-Compression
9	3256-24	1	Washer-Flat
10	3296-39	5	Nut-Lock, NI
11	32151-103	5	Ring-Snap
12	1-633068	2	Arm-Lift, Deck
14	323-29	2	Screw-HH
15	1-633889-01	1	Plate-Lift, Deck
16	1-632899-01	1	Plate-Lift, Deck
17	1-633082	1	Bushing-Lever, Lift

Ref. No.	Part No.	Qty.	Description
18	1-633080	1	Bushing-Lever, Lift
19	323-13	1	Screw-HH
20	1-633097	1	Pin-Hitch W/Lanyard
21	1-806005	1	Pin-Hair
22	323-9	2	Screw-HH
23	98-5975	12	Washer-Belleville
24	3290-357	17	Nut-HHF
25	323-6	3	Screw-HH
26	323-7	12	Screw-HH
27	3256-29	4	Washer-Flat
☆35		2	Front Frame Spring ASM
35:1	1-633096	1	Rod-Lift, Deck
35:2	1-633441	2	Swivel-Deck Mount, Rear
35:3	3217-11	4	Nut-Hex
35:4	3218-6	2	Nut-Jam
35:5	3256-7	2	Washer-Flat
35:6	1-633064	1	Spring-Support, Deck
36	1-633706	1	Decal-Height, Deck
37	1-633345	1	Decal-Height, Deck

☆ Not serviced separately

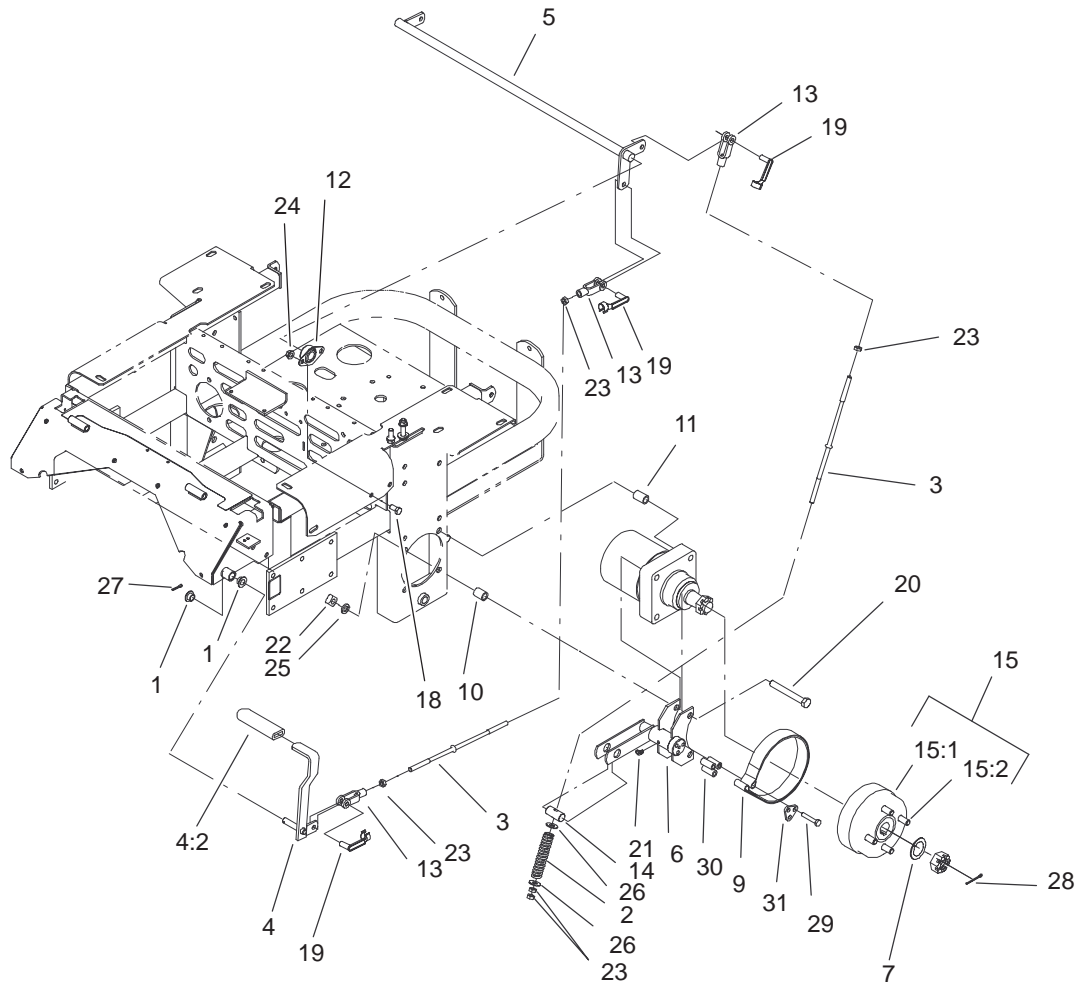


Sheet No.:4

Rear Frame and Wheel Assembly

Ref. No.	Part No.	Qty.	Description
1	1-633964-03	1	Stop-Brake, Park
4	322-3	6	Screw-HH
5	323-6	2	Screw-HH
9	1-633696	1	Cable-Throttle
10	1-603336	1	Control-Choke
11	105-3648	1	Main Frame ASM
11:2	103-2433	1	Decal-Console, Top
12	1-633970	2	Wheel And Tire ASM
12:1	1-633993	1	Tire
12:2	1-633992	1	Wheel
13	106-6584	1	Console ASM
13:2	106-6570	1	Decal-Control Panel
13:3	103-0262	1	Decal-Valve, Fuel
13:4	98-4387	1	Decal-Protection, Ear
13:5	104-8172	1	Decal-Mobil 1
15	242-50	8	Nut-Lug
19	3296-2	2	Nut-Lock
21	3296-39	2	Nut-Lock, NI
22	1-807513	2	Bolt-CARR
24	1-513762	1	Clip-Loom
25	1-303335	1	Tie-Plastic
26	1-513592	1	Knob-Ball
27	321-4	1	Screw-HH
28	32128-33	1	Nut-HF
29	1-513658	2	Bumper-Catcher, Grass

Ref. No.	Part No.	Qty.	Description
42	99-4628	1	Decal-Z253
44	3256-23	6	Washer-Flat

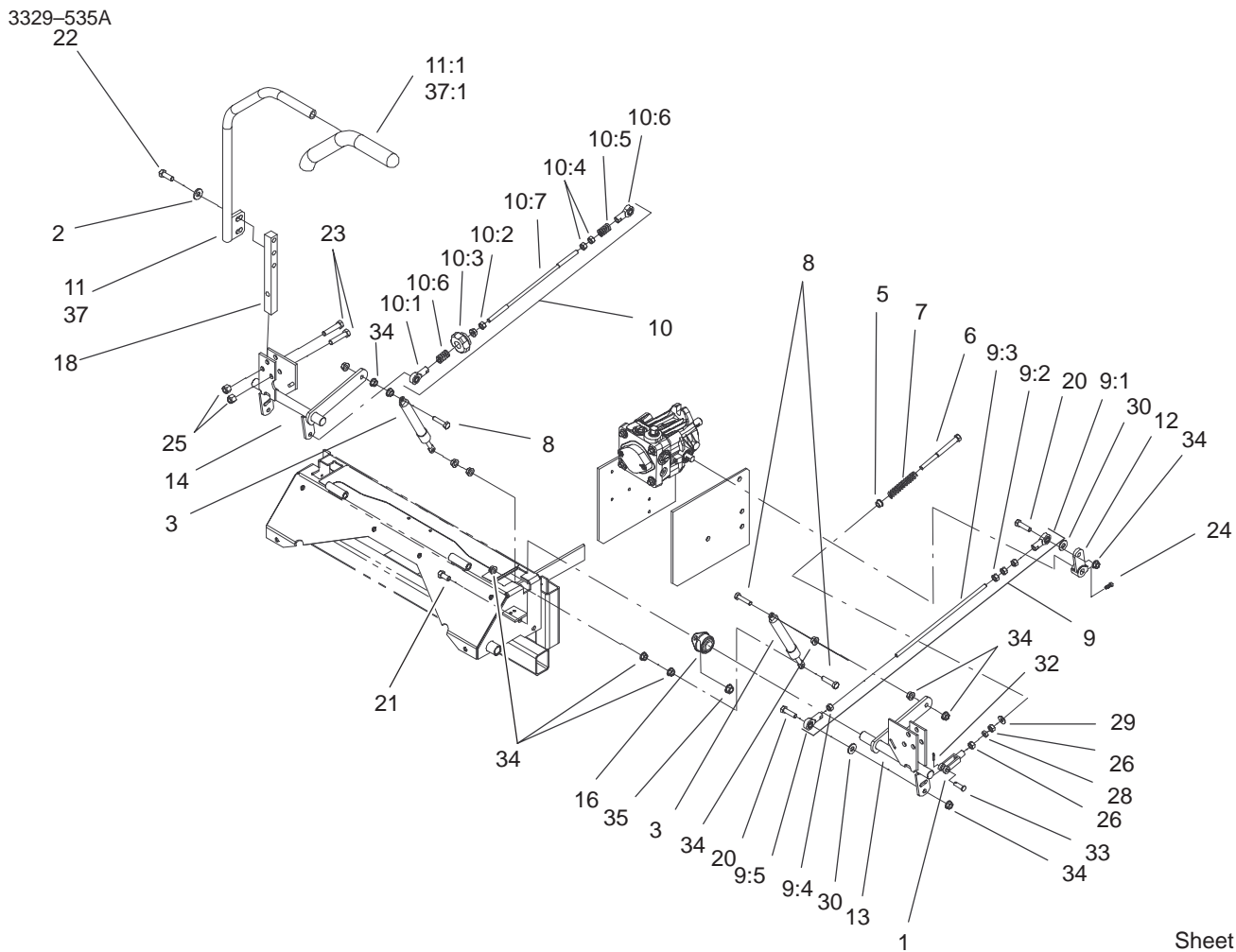


Sheet No.:5

Brake and Wheel Hub Assembly

Ref. No.	Part No.	Qty.	Description
1	1-513140	2	Bearing-Control
2	1-633454	2	Spring-Brake
3	1-633477	3	Rod-Brake
4	1-634500	1	Brake Lever ASM
4:2	1-633268	1	Grip-Lever, Brake
5	1-632217-03	1	Shaft-Brake
6	103-0352-03	2	Bracket-Brake
7	1-523157	2	Washer-Spacer
9	103-0355	2	Band-Brake
10	1-633380	4	Spacer-Wheel, Short
11	1-633382	4	Spacer-Wheel, Long
12	1-633102	2	Bearing-Flange, Side
13	1-633131	4	Yoke-Linkage, Brake
14	1-633144	2	Pin-Trunion
15	103-0590	2	Hub-Wheel
15:1	103-0589	1	Hub-Wheel
15:2	1-633926	4	Stud-Wheel
18	323-4	4	Screw-HH
19	103-2399	4	Pin-Spring, Clevis
20	325-17	8	Screw-HH
21	1481	2	Fitting-Grease
22	103-0131	8	Nut-Square
23	3219-3	8	Nut-HH
24	3290-357	4	Nut-HHF
25	3253-7	8	Washer-Lock
26	3256-4	4	Washer-Flat

Ref. No.	Part No.	Qty.	Description
27	3272-10	1	Pin-Cotter
28	1-806800	2	Pin-Cotter
29	322-9	6	Screw-HH
30	103-0384	6	Spacer
31	103-0374	2	Retainer-Band, Brake

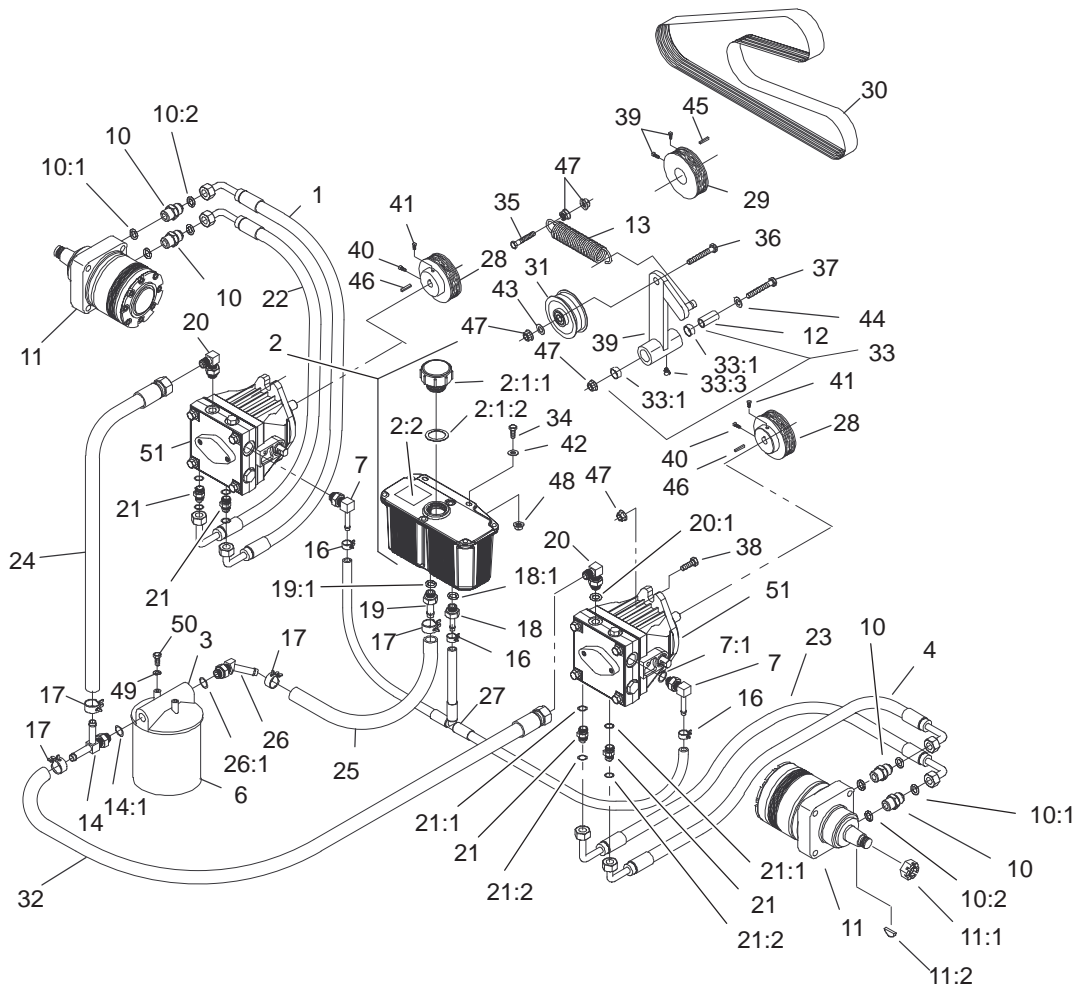


Sheet No.:6

Steering Control Assembly

Ref. No.	Part No.	Qty.	Description
1	1-303105	2	Yoke-Adjustable
2	98-5975	4	Washer-Belleville
3	103-2913	2	Damper-Control, Motion
5	1-603735	2	Bushing-Flanged
6	1-603737	2	Bolt-Return, Neutral
7	1-603807	2	Spring-Return, Neutral
8	1-403180	4	Screw-HH
9	103-3074	1	LH Pump Linkage ASM
9:1	1-543017	1	Balljoint-RH
9:2	3219-2	3	Nut-Hex
9:3	103-3064	1	Link-Rod, Tracking
9:4	1-804524	1	Nut
9:5	1-633152	1	Balljoint-Thread, LH
10	103-3061	1	Tracking Rod ASM
10:1	1-543017	1	Balljoint-RH
10:2	3219-2	1	Nut-Hex
10:3	103-3060	1	Knob-Tracking
10:4	1-804524	2	Nut
10:5	1-323245	2	Spring-Compression
10:6	1-633152	1	Balljoint-Thread, LH
10:7	103-3064	1	Link-Rod, Tracking
11	103-0632	1	RH Lever ASM
11:1	1-633257	1	Grip-Control, Motion

Ref. No.	Part No.	Qty.	Description
12	1-632208	2	Arm-Control, Pump
13	1-642319	1	Control-Motion, LH
14	1-642320	1	Control-Motion, RH
16	1-633102	4	Bearing-Flange, Side
18	103-0407	2	Arm-Shaft, Control
20	322-6	4	Screw-HH
21	323-4	8	Screw-HH
22	323-6	4	Screw-HH
23	323-9	6	Screw-HH
24	1-803022	2	Screw-Set
25	3296-39	6	Nut-Lock, NI
26	3219-2	4	Nut-Hex
28	3220-2	2	Nut
29	3256-2	2	Washer-Flat
30	3256-3	4	Washer-Flat
32	3272-5	2	Pin-Cotter
33	1-808280	2	Pin-Clevis
34	32128-20	16	Nut-HF
35	3290-357	8	Nut-HHF
37	103-0631	1	LH Lever ASM
37:1	1-633257	1	Grip-Control, Motion



Sheet No.:7

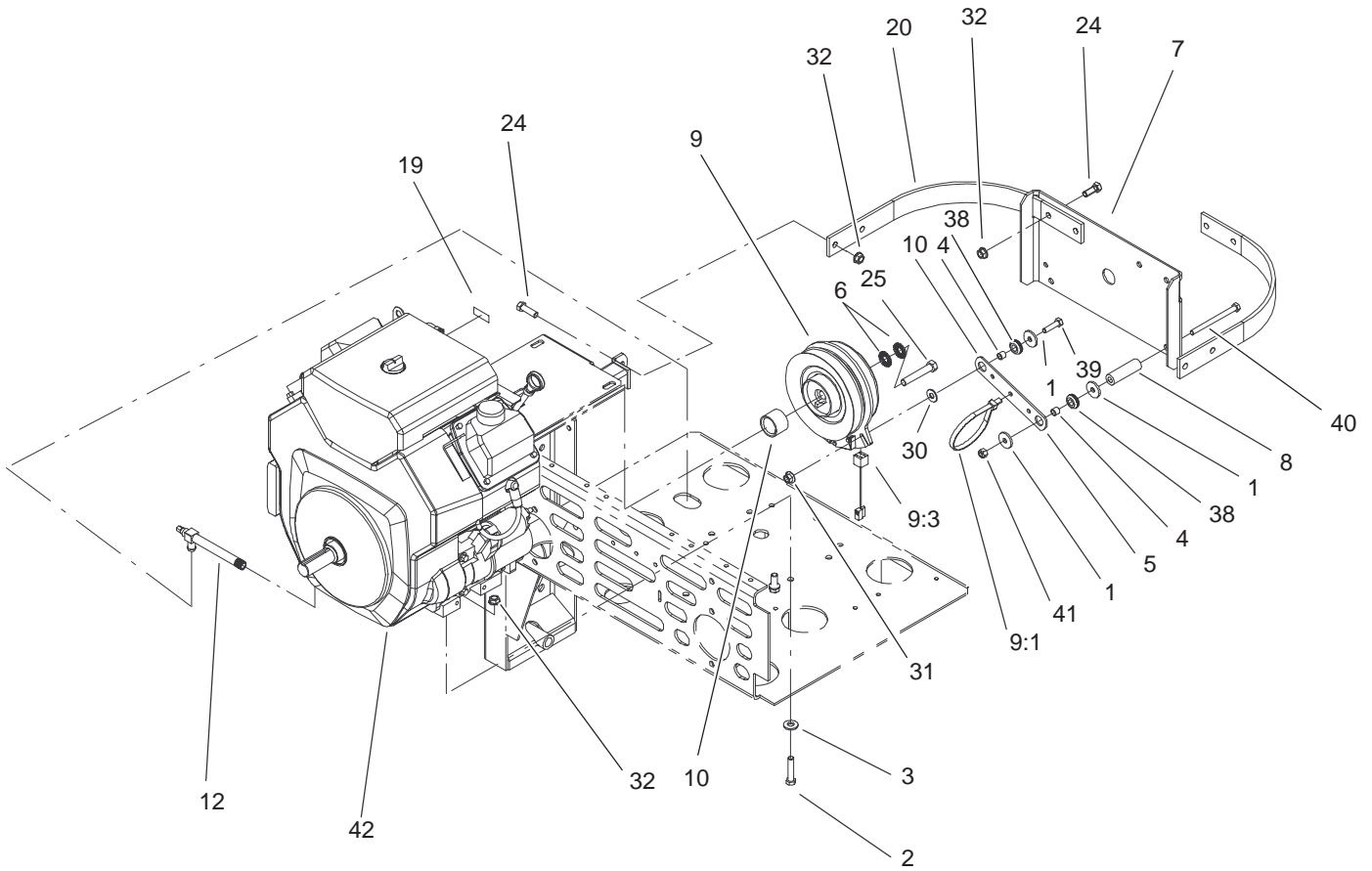
Hydraulic System Assembly

Ref. No.	Part No.	Qty.	Description
1	103-3736	1	Hose,RH Upper 52/60
2	103-1947	1	HYD Reservoir ASM
☆2:1		1	Reservoir-HYD
2:1:1	103-1948	1	Cap-Reservoir, HYD
2:1:2	103-1949	1	Gasket-Cap
2:2	1-523552	1	Decal-Tank, HYD
3	104-7836	1	Head-Filter
4	103-3733	1	Hose,LH Upper 52/60
6	1-633750	1	Filter-HYD
6	1-633752	1	Filter-HYD, Winter
7	103-1799	2	Elbow-90°
7:1	237-42	1	O-Ring
10	1-603991	4	Fitting-Straight
10:1	237-80	1	O-Ring
10:2	1-603992	1	O-Ring
11	1-523328	2	Motor-Wheel
11:1	1-809036	1	Nut-HH
11:2	3257-42	1	Key-Woodruff
*11:99	1-000099	1	Seal Kit
*11:99	1-000139	1	Bearing Kit
*11:99	103-2748	1	Drive Link Kit
12	1-603384	1	Bushing-Pivot, Idler
13	103-3330	1	Spring-Extension
14	103-1828	1	Adapter-Run, Tee
14:1	237-42	1	O-Ring
16	103-1716	3	Clamp-Hose

Ref. No.	Part No.	Qty.	Description
17	103-1988	4	Clamp-Hose
18	103-1801	1	Adapter-Straight
18:1	237-42	1	O-Ring
19	103-1912	1	Adapter-Straight
19:1	237-42	1	O-Ring
20	103-1802	2	Fitting-HYD, 90°
20:1	237-42	1	O-Ring
21	1-603990	4	Fitting-Straight
21:1	237-79	1	O-Ring
21:2	1-603992	1	O-Ring
22	103-3737	1	Hose,RH Lower 52/60
23	103-3735	1	Hose,LH Lower 52/60
24	103-1826	1	HYD Hose ASM
25	103-1808	1	Hose-HYD
26	103-1807	1	Elbow-45°
26:1	237-42	1	O-Ring
27	103-1806	1	HYD Hose ASM
28	1-633568	2	Sheave
29	1-633567	1	Sheave
30	1-633749	1	Belt-Drive, Pump
31	1-633167	1	Sheave-Idler
32	103-1827	1	HYD Hose ASM
33	1-634277	1	Bearing Arm ASM
33:1	1-513034	2	Sleeve-Bearing
33:3	302-40	1	Fitting-Grease
34	321-6	2	Screw-HH

☆ Not serviced separately

* Not illustrated



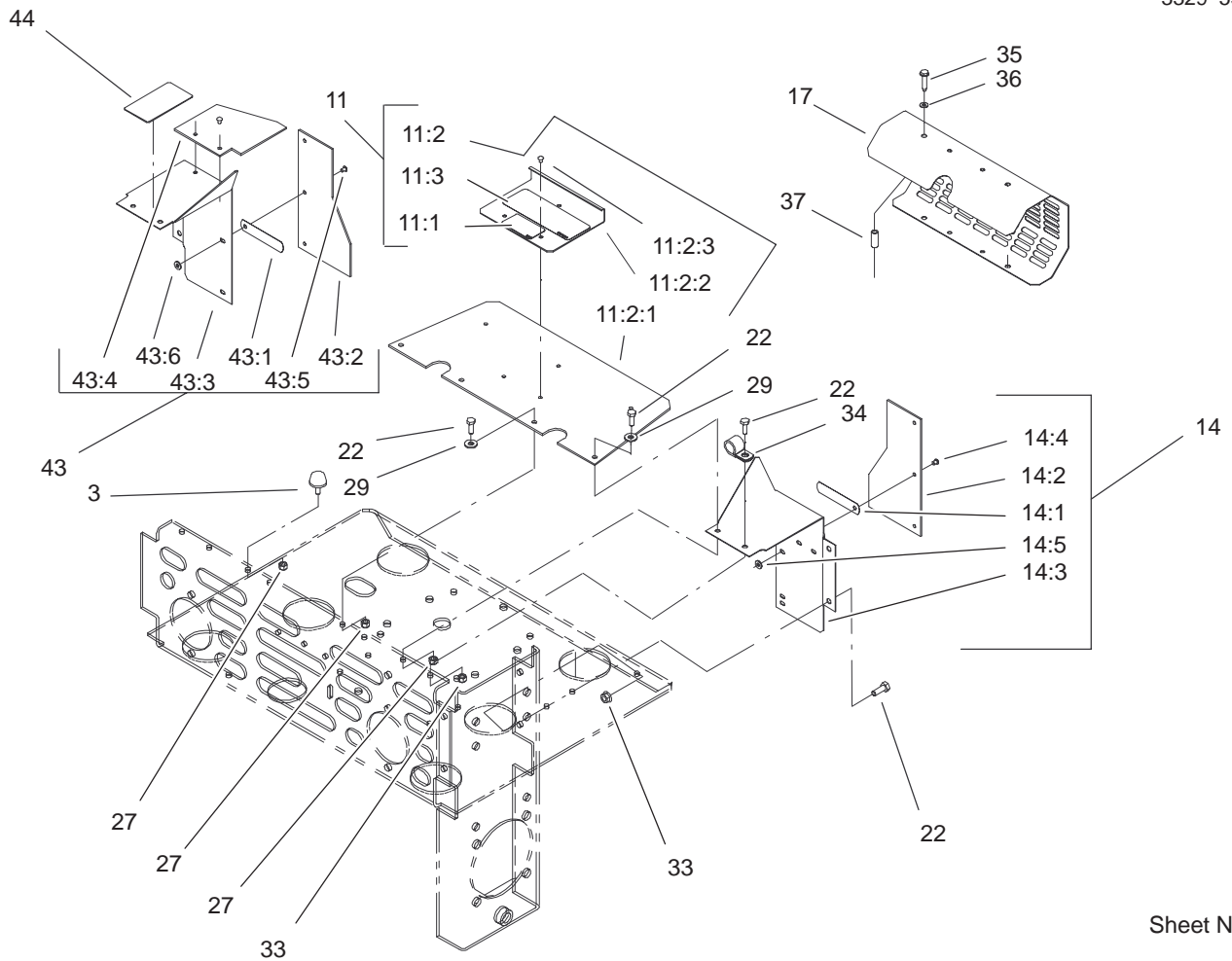
Sheet No.:12

Clutch Assembly

Ref. No.	Part No.	Qty.	Description
1	1-613235	4	Washer
2	323-9	4	Screw-HH
3	98-5975	4	Washer-Belleville
4	1-633545	2	Spacer-Grommet
5	1-633543-03	1	Strap-Clutch, Brake
6	1-603610	2	Washer-Spring
7	1-633615-03	1	Guard-Clutch
8	1-633988	1	Spacer-Anchor, Clutch
9	103-0662	1	Clutch ASM
9:1	1-303335	1	Tie-Plastic
9:3	105-1670	1	Harness-Jumper, Clutch
10	1-633453	1	Spacer-Clutch
12	103-1996	1	Valve-Oil Drain, Long
19	103-3270	1	Decal-3750 Rpm
20	1-643264-03	2	Bracket-Guard, Top
24	323-6	6	Screw-HH
25	3212-10	1	Screw-HH
30	3256-3	1	Washer-Flat
31	32128-20	1	Nut-HF
32	3290-357	8	Nut-HHF
38	1-633630	2	Grommet-Brake
39	322-6	1	Screw-HH
40	322-19	1	Screw-HH
41	3296-29	1	Nut-Lock, NI

Ref. No.	Part No.	Qty.	Description
☆42		1	Engine-Kohler, Ch23s-76569

☆ Not serviced separately

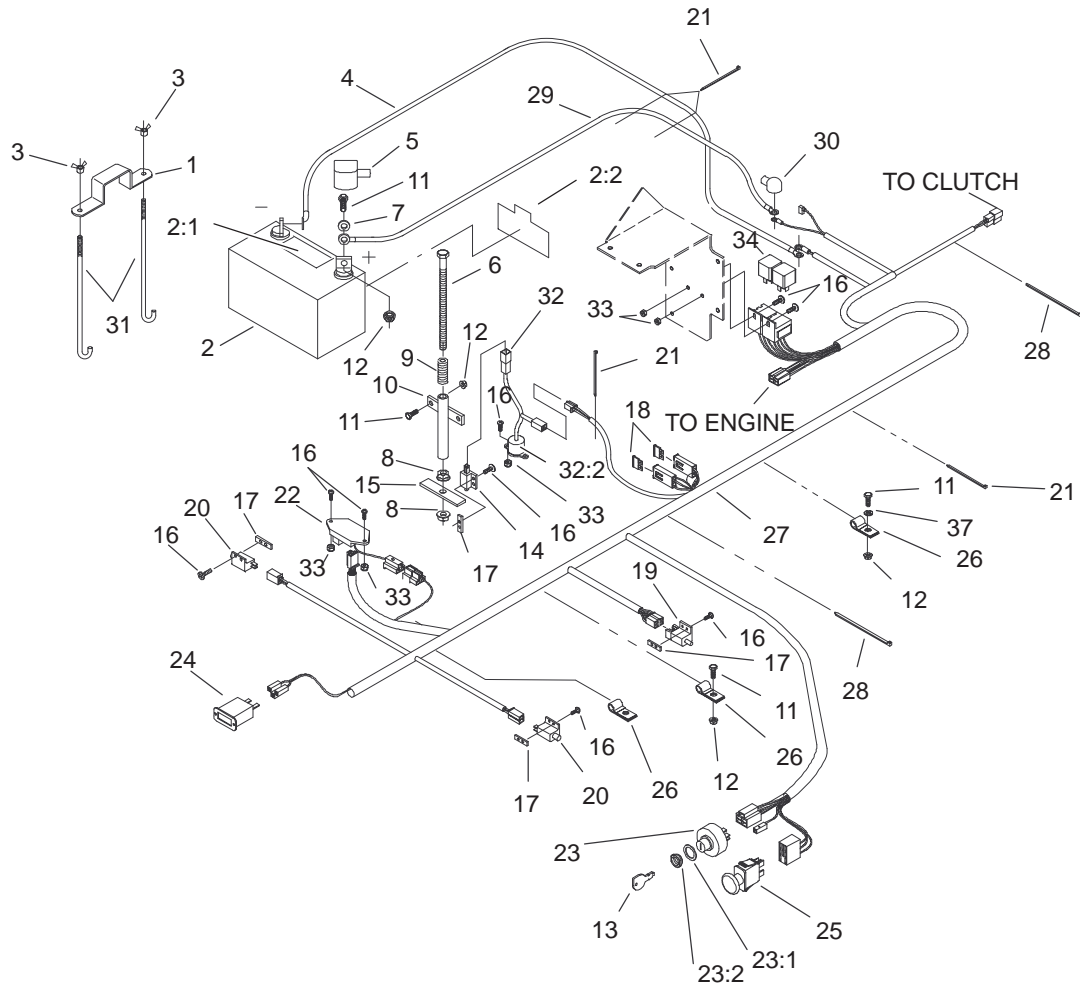


Sheet No.:13

Shield Assembly

Ref. No.	Part No.	Qty.	Description
3	1-523420	2	Bumper
11	1-644276	1	Shield ASM
11:1	1-633462	1	Decal-Important
11:2	1-634308	1	Shield/Lift ASM
11:2:1	103-1308	1	Shield-Engine
11:2:2	1-633300-03	1	Lift-Shield
11:2:3	1-803035	3	Rivet-Pop
11:3	103-0368	1	Decal-Devices, Rotating
14	1-634796	1	LH Shield ASM
14:1	1-523285	1	Clip-Baffle, Rear
14:2	1-633301	1	Shield-Engine
14:3	1-633795-03	1	Baffle-Engine Shield, LH
14:4	1-803035	3	Rivet-Pop
14:5	3256-63	3	Washer-Flat
17	1-643313-03	1	Guard-Muffler
22	321-4	10	Screw-HH
27	3296-42	6	Nut-Lock, NI
29	3256-2	4	Washer-Flat
33	32128-33	5	Nut-HF
34	1-633396	1	Clip-Loom
35	1-809076	2	Screw
36	1-323235	2	Washer-Spring
37	1-323236	2	Spacer
43	1-644316	1	RH Shield ASM

Ref. No.	Part No.	Qty.	Description
43:1	1-523285	1	Clip-Baffle, Rear
43:2	1-633301	1	Shield-Engine
43:3	1-633794-03	1	Baffle-Engine Shield, RH
43:4	1-643315	1	Baffle-Cooler, Engine
43:5	1-803035	5	Rivet-Pop
43:6	3256-63	5	Washer-Flat
44	1-643339	1	Decal-Routing, Belt

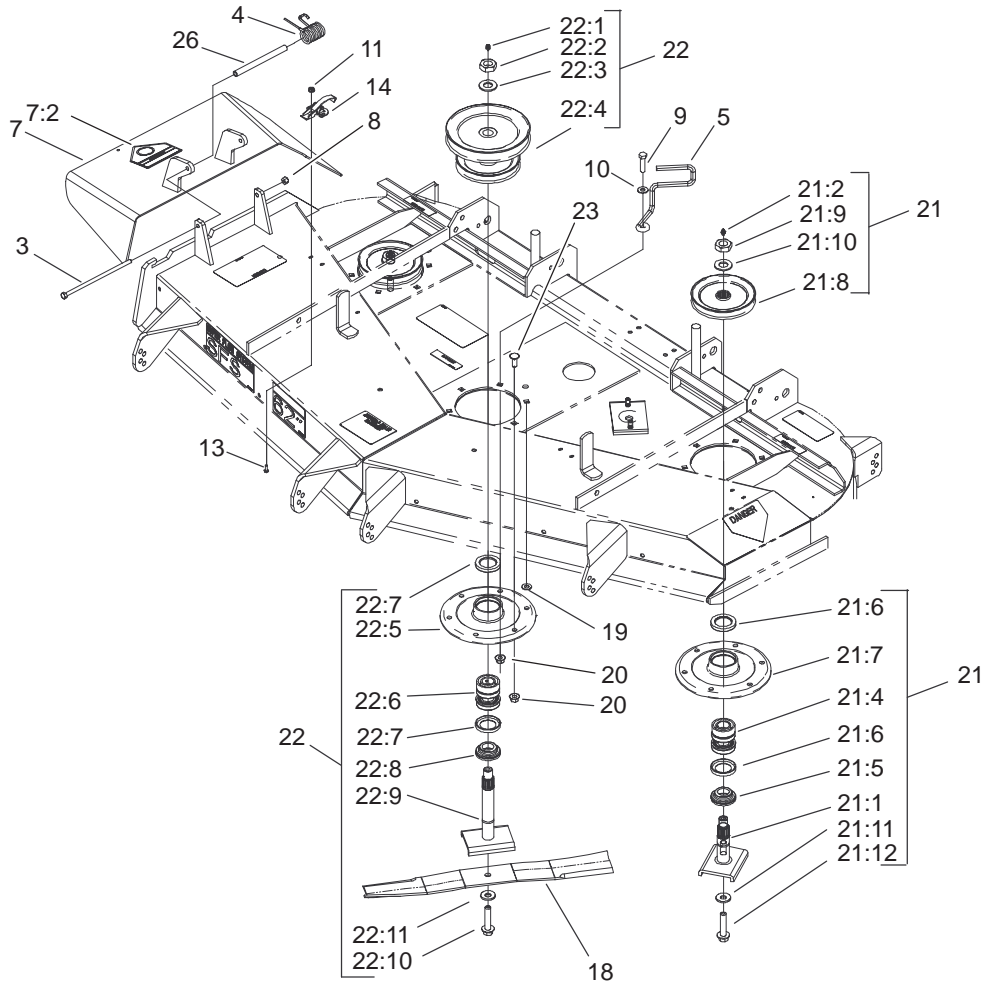


Sheet No.:27

Electrical System Assembly

Ref. No.	Part No.	Qty.	Description
1	1-633652-03	1	Strap-Holddown
2	105-1692	1	Battery
2:1	104-4163	1	Decal-Battery
2:2	104-4164	1	Decal-Battery
3	1-543792	2	Wingnut
4	1-633307	1	Wire-Ground
5	1-543391	1	Insulator-Battery
6	1-800282	1	Screw-HH
7	3256-2	2	Washer-Flat
8	32128-20	2	Nut-HF
9	1-523415	1	Spring-Switch, Seat
10	1-522424-03	1	Mount-Spring, Seat
11	321-4	6	Screw-HH
12	32128-33	6	Nut-HF
13	63-8360	2	Key-Ignition
14	1-513152	1	Switch-Closed, Normally
15	1-513180	1	Plate-Switch, Seat
16	3290-500	14	Screw-PPH
17	1-633181	4	Plate-Tapped
18	1-816001	2	Fuse-Type, Blade
19	1-633111	1	Switch
20	1-513051	2	Switch-Open, Normally
21	1-303287	5	Tie-Plastic
22	100-6186	1	Module-Delay, Seat

Ref. No.	Part No.	Qty.	Description
23	88-9830	1	Key Switch ASM
23:1	3254-5	1	Washer-Tooth
23:2	218-461	1	Nut-HH
24	1-513374	1	Meter-Hour
25	1-633673	1	Switch-Delta
26	1-633396	3	Clip-Loom
27	100-4340	1	Harness-Wire
28	1-303335	2	Tie-Plastic
29	1-523281	1	Wire-Starter
30	1-543393	1	Insulator-Solenoid
31	1-633651	2	Bolt-Holddown
32	1-644427	1	Tilt Switch ASM
32:2	1-643401	1	Decal-Switch, Mercury
33	3296-2	6	Nut-Lock
34	1-643275	2	Relay
37	3256-22	1	Washer-Flat

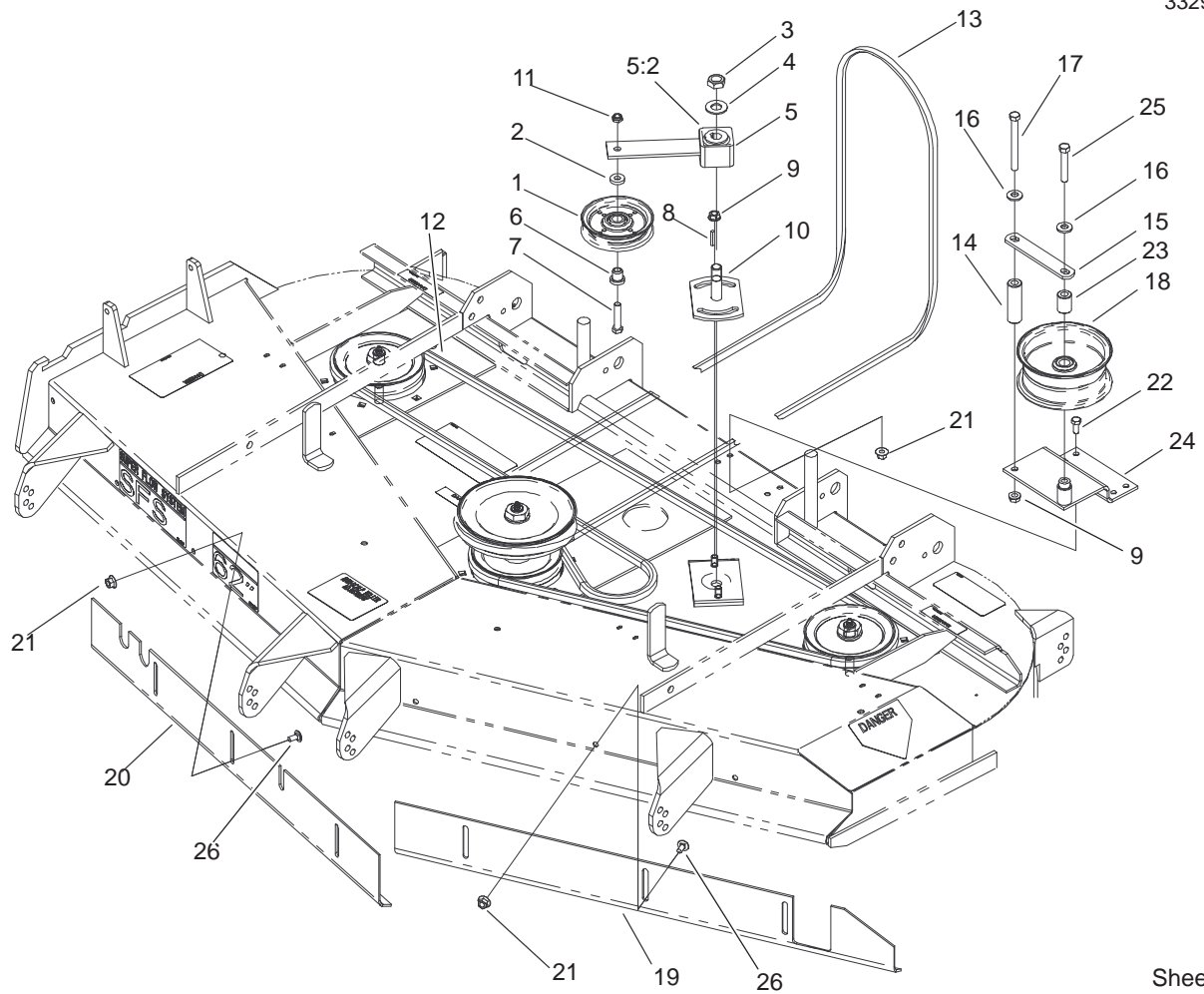


Sheet No.:62

Spindle and Pulley Assembly

Ref. No.	Part No.	Qty.	Description
3	322-50	1	Screw-HH
4	104-8554	1	Spring-Torsion
5	99-8933	1	Guide-Belt
7	105-3605	1	Deflector ASM
7:2	93-1122	1	Decal-Danger
8	3296-29	1	Nut-Lock, NI
9	323-8	1	Screw-HH
10	3256-3	1	Washer-Flat
11	32128-17	8	Nut-Lock, Flange
13	3290-321	8	Screw-HWH
14	249-21	4	Clamp-Slotted
18	44-6250	3	Blade
19	3256-24	1	Washer-Flat
20	32128-21	18	Nut-HF
21	99-4640	2	Outer Spindle ASM
21:1	27-0920	1	Shaft
21:2	302-2	1	Fitting-Grease
21:4	46-8530	1	Bearing ASM
21:5	27-0950	1	Spacer
21:6	253-139	2	Seal-Oil
21:7	61-4160	1	Housing
21:8	99-4614	1	Pulley And Hub ASM
21:9	32146-20	1	Nut-Jam
21:10	7-4150	1	Washer
21:11	1-513435	1	Washer-Spring
21:12	92-5816	1	Bolt-Blade

Ref. No.	Part No.	Qty.	Description
22	105-1689	1	Spindle Housing ASM
22:1	302-2	1	Fitting-Grease
22:2	32146-20	1	Nut-Jam
22:3	92-5836	1	Washer
22:4	100-4307	1	Pulley/Hub ASM
22:5	61-4160	1	Housing
22:6	46-8530	1	Bearing ASM
22:7	253-139	2	Seal-Oil
22:8	27-0950	1	Spacer
22:9	105-1686	1	Spindle Shaft ASM
22:10	92-5816	1	Bolt-Blade
22:11	1-513435	1	Washer-Spring
23	3231-22	17	Screw-CARR
26	105-4622	1	Spacer

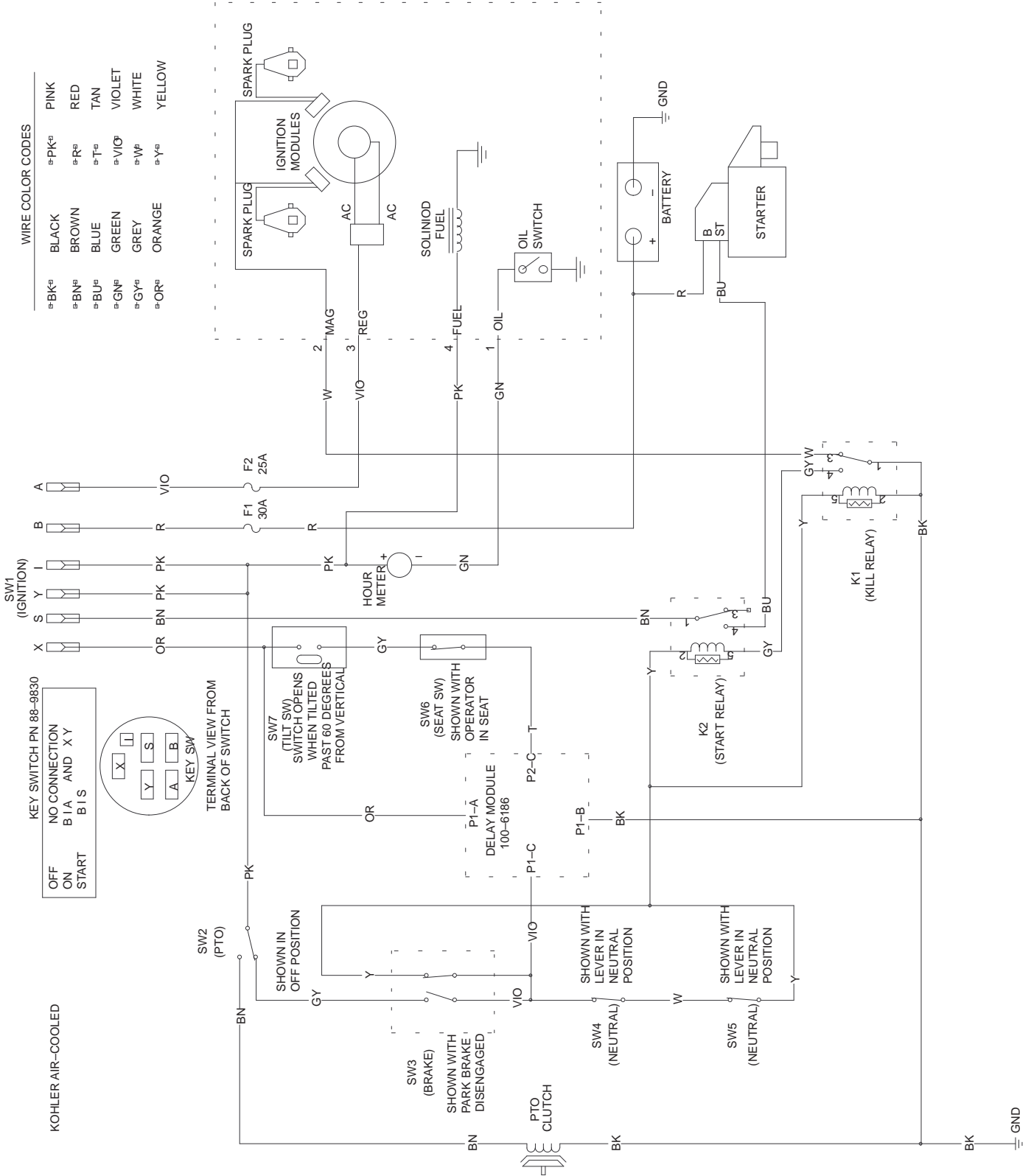


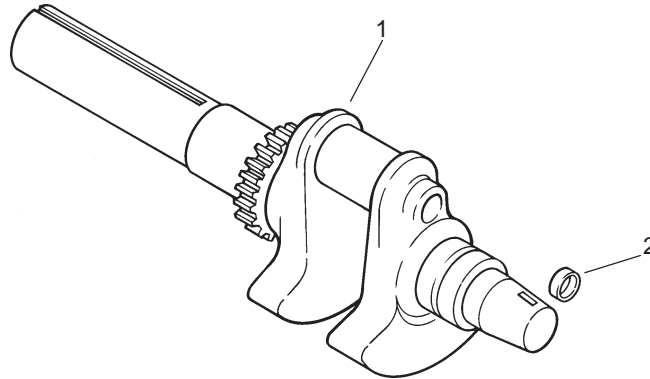
Sheet No.:63

Belt and Idler Arm Assembly

Ref. No.	Part No.	Qty.	Description	Ref. No.	Part No.	Qty.	Description
1	65-5940	1	Pulley-Idler	25	323-11	1	Screw-HH
2	7-0081	1	Washer-Flat	26	3230-18	6	Screw-CARR
3	3296-71	1	Nut-Lock NI				
4	3256-27	1	Washer-Flat				
5	27-8580	1	Idler Arm ASM				
5:2	27-8490	1	Bushing-Rubber				
6	65-5950	1	Bushing-Pulley				
7	3211-8	1	Screw-HH				
8	5-1077	1	Key-Square				
9	3290-357	3	Nut-HHF				
10	44-6301	1	Plate-Idler, LH				
11	3296-5	1	Nut-Lock, NI				
12	44-6260	1	V-Belt				
13	99-4647	1	V-Belt-Drive, Deck				
14	99-4659	1	Spacer-Bracket				
15	1-653189	1	Plate				
16	98-5975	2	Washer-Belleville				
17	323-42	1	Screw-HH				
18	1-413099	1	Pulley-Idler				
19	99-2833-03	1	Baffle-Front, LH				
20	99-2834-03	1	Baffle-Front, RH				
21	32128-20	10	Nut-HF				
22	322-3	4	Screw-HH				
23	1-653190	1	Spacer				
24	99-4684-01	1	Bracket-Pulley				

Electrical Schematic



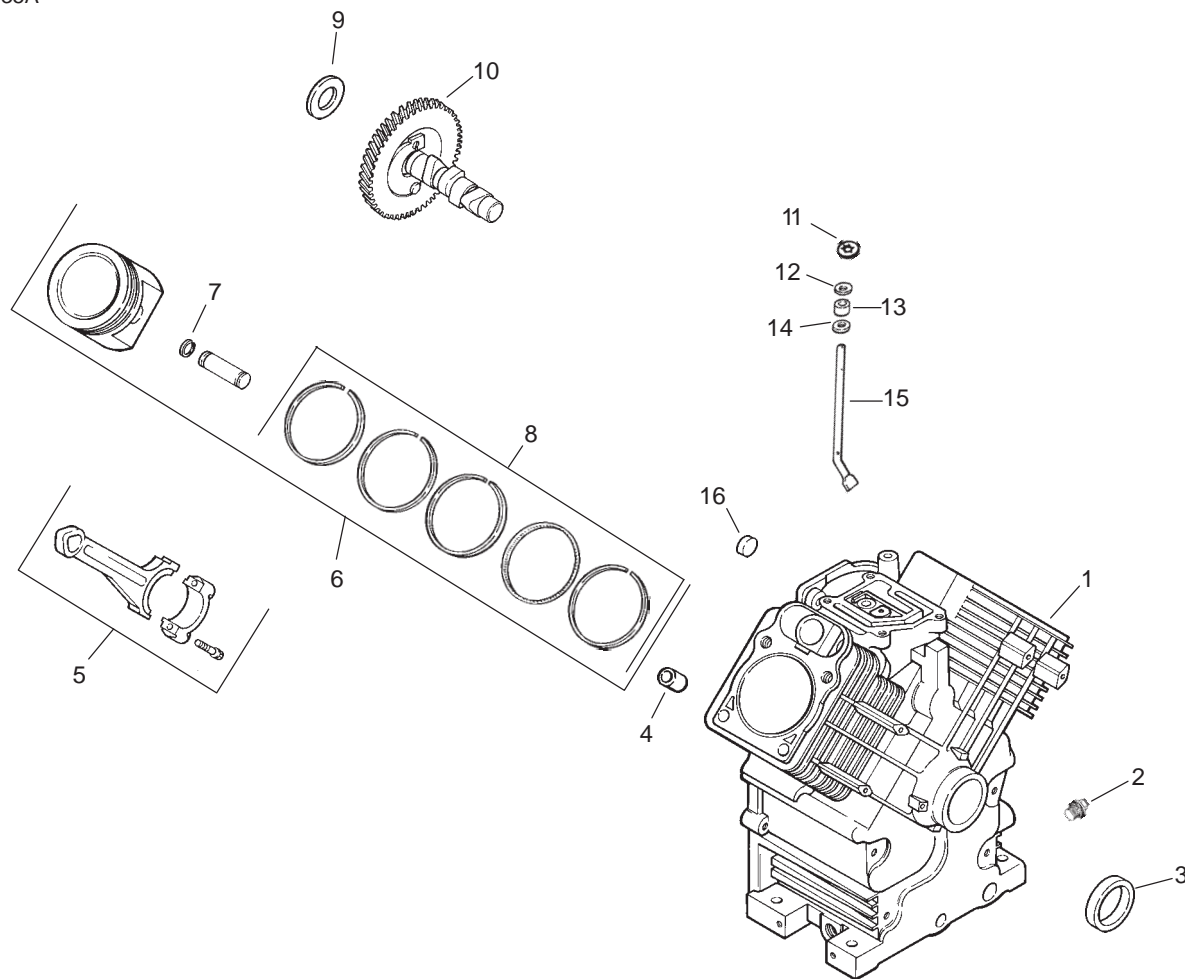


Group 1 – Crankshaft Assembly Kohler CH23S-76569

Ref. No.	Part No.	Qty.	Description
1	24 014 84-S	1	Crankshaft assembly (Includes 2)
2	52 139 09-S	1	Plug, cup

Ref. No.	Part No.	Qty.	Description

Obtain Parts from Kohler

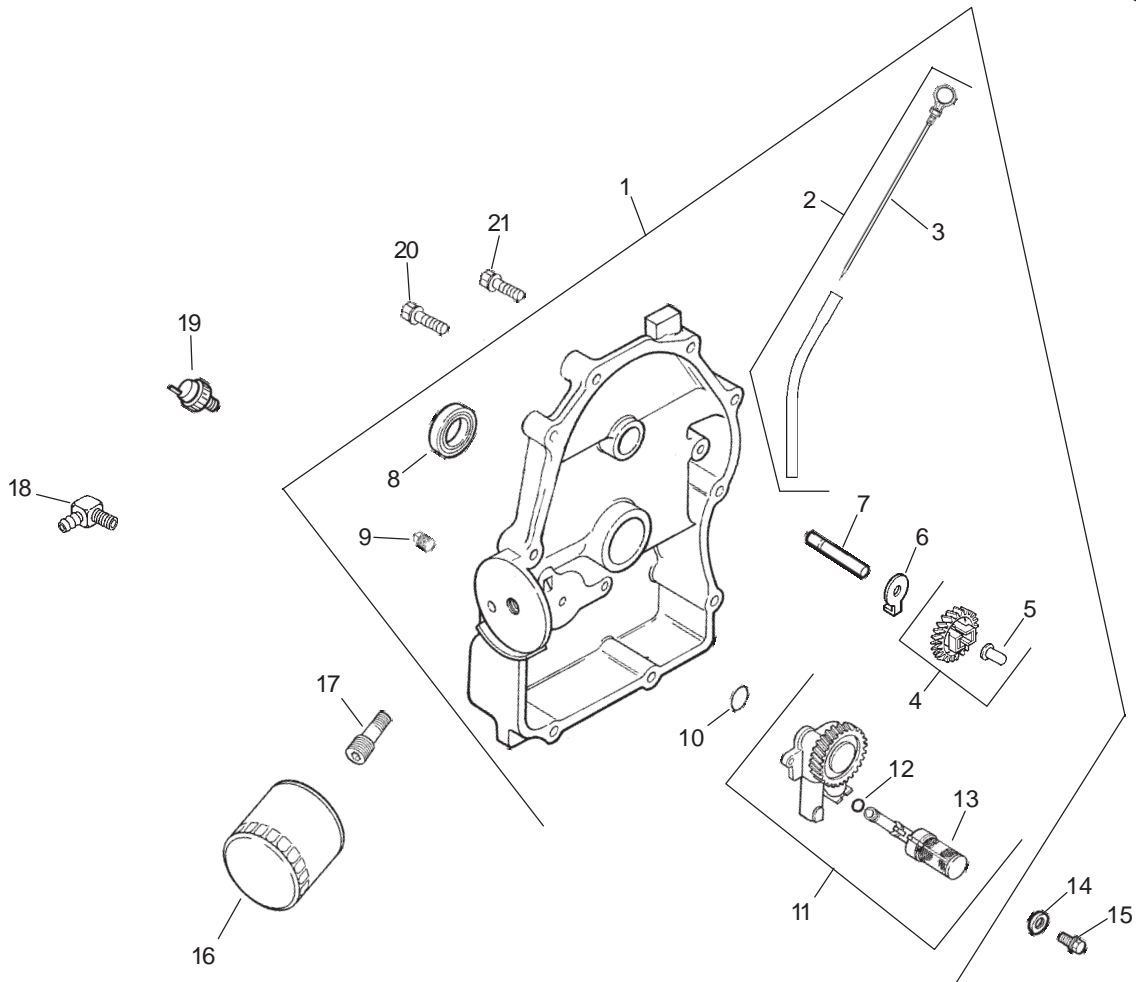


Group 2 – Crankcase Assembly Kohler CH23S-76569

Ref. No.	Part No.	Qty.	Description
1		1	Crankcase (USE: Short Block or Miniblock)
2	25 139 57-S	2	Plug, solid sq. hd. 3/8 N.P.T.F.
3	24 032 01-S	1	Seal, front oil
4	24 380 13-S	6	Pin, locating
5	24 067 13-S	2	Connecting Rod (Std.)
	24 067 14-S	2	Connecting Rod (.25)
6	24 874 09-S	2	Piston w/Ring Set (Std.) (Includes 7, 8)
	24 874 10-S	2	Piston w/Ring Set (.25) (Includes 7, 8)
	24 874 11-S	2	Piston w/Ring Set (.50) (Includes 7, 8)
	24 874 15-S	2	Piston w/Ring Set (.080) (Includes 7, 8)
7	24 018 01-S	4	Retainer, piston pin
8	24 108 08-S	2	Ring Set (Std.)
	24 108 09-S	2	Ring Set (.25)
	24 108 10-S	2	Ring Set (.50)
9	12 422 09-S	A.R.	Shim, camshaft
	12 422 13-S	A.R.	Shim, camshaft
	12 422 07-S	A.R.	Shim, camshaft

Ref. No.	Part No.	Qty.	Description
	12 422 08-S	A.R.	Shim, camshaft
	12 422 10-S	1	Shim, camshaft
	12 422 11-S	A.R.	Shim, camshaft
	12 422 12-S	A.R.	Shim, camshaft
10	24 012 10-S	1	Camshaft
11	24 018 09-S	1	Ring, retainer
12	M-931010-S	1	Washer, nylon (top)
13	28 032 09-S	1	Seal, governor cross shaft
14	24 468 15-S	1	Washer, (bottom)
15	24 144 38-S	1	Shaft, governor cross
16	52 139 09-S	1	Plug, cup

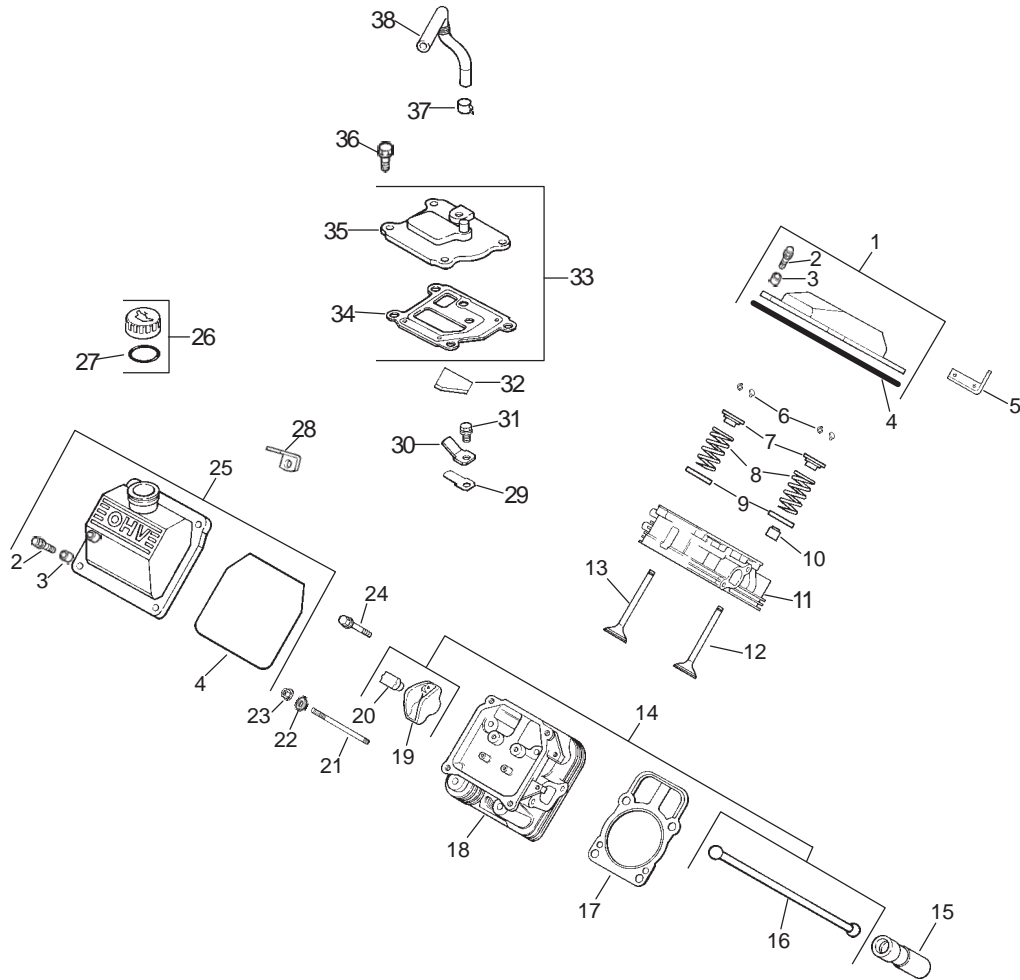
Obtain Parts from Kohler



Group 3 – Oil Pan/Lubrication Assembly Kohler CH23S-76569

Ref. No.	Part No.	Qty.	Description	Ref. No.	Part No.	Qty.	Description
1	24 009 83-S	1	Kit, closure plate (Includes 2-13)	19	24 099 03-S	1	Switch, oil pressure
2	24 755 121-S	1	Kit, dipstick & tube (Includes 3)	20	24 086 16-S	9	Screw, hex. flange M8x1.25x45
3	24 038 10-S	1	Dipstick	21	24 086 17-S	1	Screw, hex. flange M8x1.25x45
4	24 043 12-S	1	Kit, governor gear w/pin (Includes 5)				
5	12 380 01-S	1	Pin, governor regulating				
6	52 448 02-S	1	Tab, locking				
7	12 144 02-S	1	Shaft, governor gear				
8	52 032 08-S	1	Seal, oil (PTO end)				
9	25 139 60-S	2	Plug, allen hd. 1/8 pipe				
10	24 153 08-S	1	O-Ring				
11	24 393 10-S	1	Oil pump assembly (Includes 12, 13)				
12	24 153 01-S	1	O-Ring, oil pick-up				
13	24 381 04-S	1	Pick-up, oil				
14	M-631005-S	2	Washer, plain 6 mm				
15	M-645025-S	2	Screw, hex. flange M6x1.0x25				
16	52 050 02-S	1	Filter, oil				
17	24 136 01-S	1	Nipple, oil filter				
18	25 155 02-S	1	Connector				

Obtain Parts from Kohler

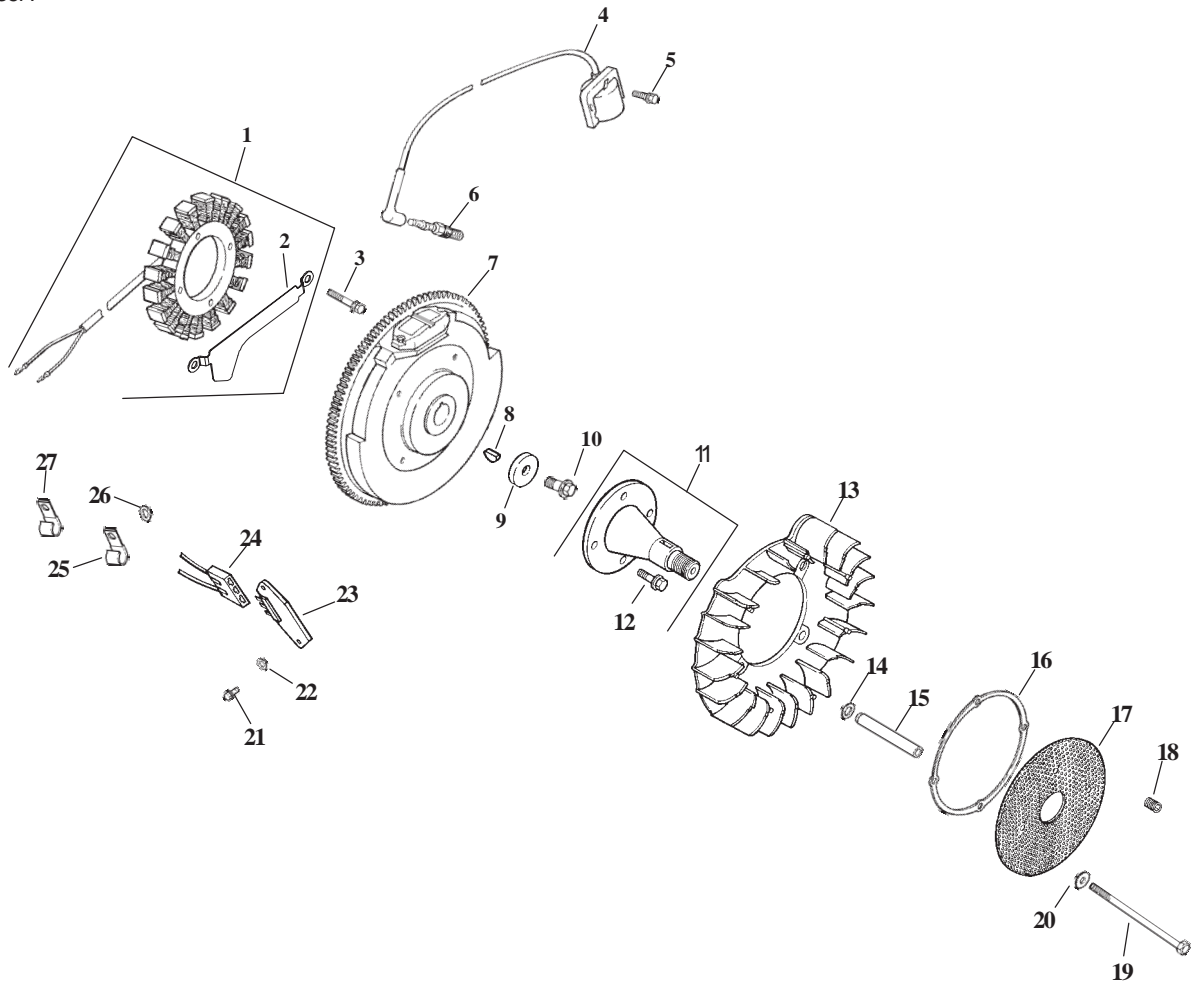


Group 4 – Head/Valve/Breather Assembly Kohler CH23S-76569

Ref. No.	Part No.	Qty.	Description
1	24 755 74-S	1	Kit, valve cover – plain (Includes 2-4)
2	M-651030-S	4	Screw, hex. flange M6x1.0x30
3	24 112 08-S	4	Spacer
4	24 153 23-S	1	O-Ring
5	24 445 01-S	1	Strap, lifting
6	12 755 03-S	4	Kit, retainer
7	12 173 01-S	4	Cap, valve spring
8	24 089 02-S	4	Spring, valve
9	235011-S	4	Retainer, spring
10	66 032 05-S	2	Seal, valve stem
11	24 318 68-S	1	Head assembly, #1 cylinder
12	24 017 01-S	2	Valve, intake (Std.)
	24 017 02-S	2	Valve, intake (.25)
13	24 016 01-S	2	Valve, exhaust (Std.)
	24 016 02-S	2	Valve, exhaust (.25)
14	24 755 66-S	1	Kit, valve train (Includes 16, 19,20)
15	25 351 01-S	4	Lifter, valve
16	24 411 05-S	4	Rod, push
17	24 041 40-S	2	Gasket, cylinder head

Ref. No.	Part No.	Qty.	Description
18	24 318 71-S	1	Head assembly, #2 cylinder
19	25 186 01-S	4	Arm, rocker
20	24 599 01-S	4	Pivot, rocker arm
21	24 072 09-S	8	Stud M10x1.5x90
22	24 468 16-S	8	Washer, flat
23	24 100 10-S	8	Nut, hex. flange M8x1.25
24	M-640034-S	4	Screw, hex. flange M6x1.0x34
25	24 755 75-S	1	Kit, valve cover – oil fill (Includes 2-4)
26	24 755 46-S	1	Kit, oil fill cap (Includes 27)
27	25 153 02-S	1	O-Ring, oil fill cap
28	12 445 05-S	1	Strap, lifting
29	24 402 03-S	1	Reed, breather
30	12 018 01-S	1	Retainer, breather reed
31	M-545010-S	1	Screw, hex. flange M5x0.8x10
32	24 050 01-S	1	Filter, breather
33	24 033 01-S	1	Kit, breather (Includes 34,35)
34	24 041 23-S	1	Gasket, breather

Obtain Parts from Kohler



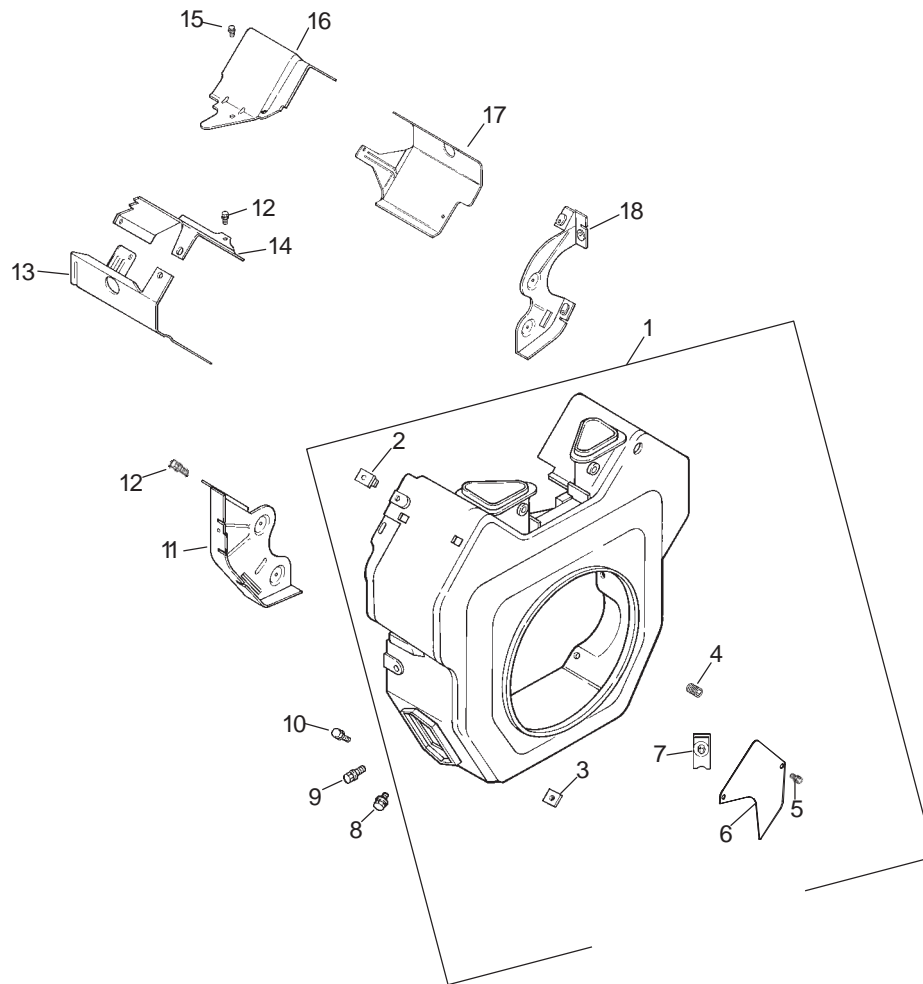
Group 5 – Ignition/Electrical Assembly Kohler CH23S-76569

Ref. No.	Part No.	Qty.	Description
1	54 755 09-S	1	Kit, 15 amp stator (Includes 2)
2	24 126 71-S	1	Bracket, stator wire
3	M-548025-S	2	Screw, hex. cap M5x0.8x25
4	24 584 25-S	2	Module, ignition
5	M-561025-S	4	Screw, thread forming M5x0.8x25
6	12 132 06-S	2	Spark Plug
7	24 025 01-S	1	Flywheel
8	X-42-15-S	1	Key
9	12 468 03-S	1	Washer, plain 3/8
10	12 086 14-S	1	Screw, hex. flange M10x1.5x46
11	24 755 08-S	1	Kit, front drive shaft (Includes 12)
12	M-839025-S	4	Screw, hex. flange M8x1.25x25
13	24 157 07-S	1	Fan
14	24 468 11-S	4	Washer, spring
15	24 112 14-S	4	Spacer
16	24 141 06-S	1	Support, ring
17	24 162 22-S	1	Screen, grass
18	25 086 43-S	1	Screw, set

Ref. No.	Part No.	Qty.	Description
19	M-603100-S	4	Screw, hex. cap M6x1.0x100
20	X-25-53-S	4	Washer, plain 1/4"
21	24 086 18-S	2	Screw, phillips hd. 11-16x7/8
22	X-25-92-S	2	Washer, plain 3/16"
23	25 403 03-S	1	Rectifier-regulator 15 amp
24	236602-S	1	Connector
25	235173-S	1	Clip, cable (clamps wires to intake manifold)
26	X-25-63-S	1	Washer, plain 1/4
27	48 154 02-S	1	Clip, cable (B+ lead)
*	X-22-11-S	1	Washer, lock 1/4"
*	24 176 109-S	1	Harness, wiring
*	24 518 12-S	1	Lead, black (5" - 12 gauge - insulated grip barrel eyelet terminals)
*	25 454 03-S	2	Tie

Obtain Parts from Kohler

* Not Illustrated

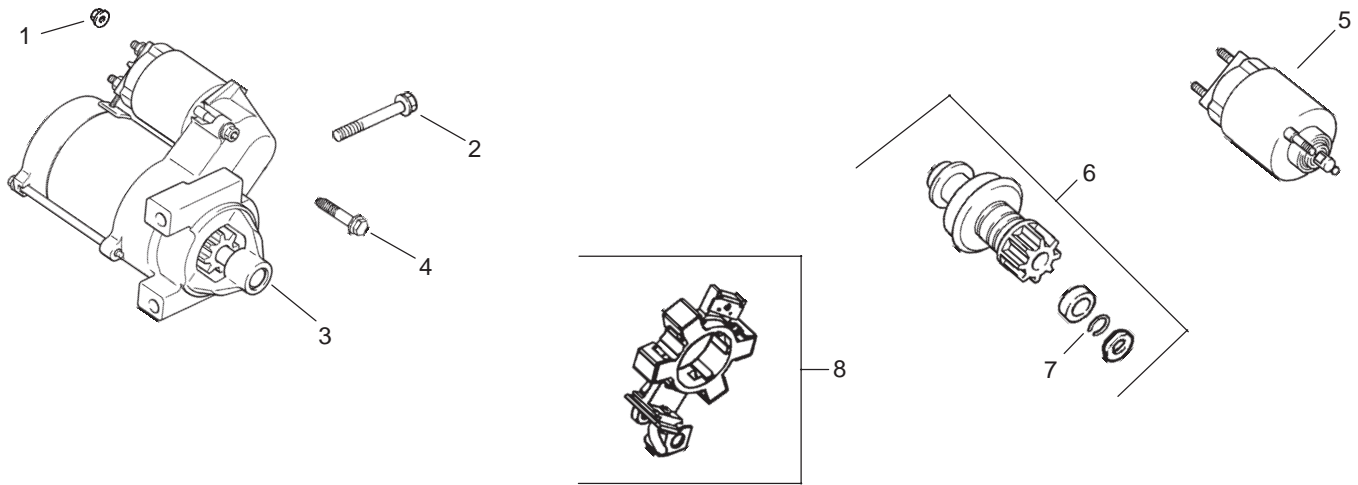


Group 6 – Blower Housing Assembly Kohler CH23S-76569

Ref. No.	Part No.	Qty.	Description	Ref. No.	Part No.	Qty.	Description
1	54 027 93-S	1	Housing, blower assembly (Includes 2-7)	15	M-545010-S	2	Screw, hex. flange M5x0.8x10
2	24 100 01-S	2	Nut, plastic	16	24 063 59-S	1	Baffle, valley – #1 side
3	24 100 02-S	2	Nut, plastic	17	24 063 58-S	1	Baffle, cylinder barrel – #1 side
4	25 086 43-S	1	Screw, set	18	24 146 20-S	1	Plate, backing – #1 side
5	M-645016-S	4	Screw, hex. flange M6x1.0x16	*	24 113 116-S	1	Decal, 23 HP
6	24 096 64-S	2	Cover, access				
7	25 154 02-S	4	Clip				
8	M-551016-S	1	Screw, hex. flange M5x0.8x16				
9	M-545016-S	3	Screw, hex flange M5x0.8x16				
10	M-545020-S	4	Screw, hex flange M5x0.8x20				
11	24 146 16-S	1	Plate, backing – #2 side				
12	M-645016-S	6	Screw, hex. flange M6x1.0x16				
13	24 063 20-S	1	Baffle, cylinder barrel – #2 side				
14	24 063 17-S	1	Baffle, valley – #2 side				

Obtain Parts from Kohler

* Not Illustrated

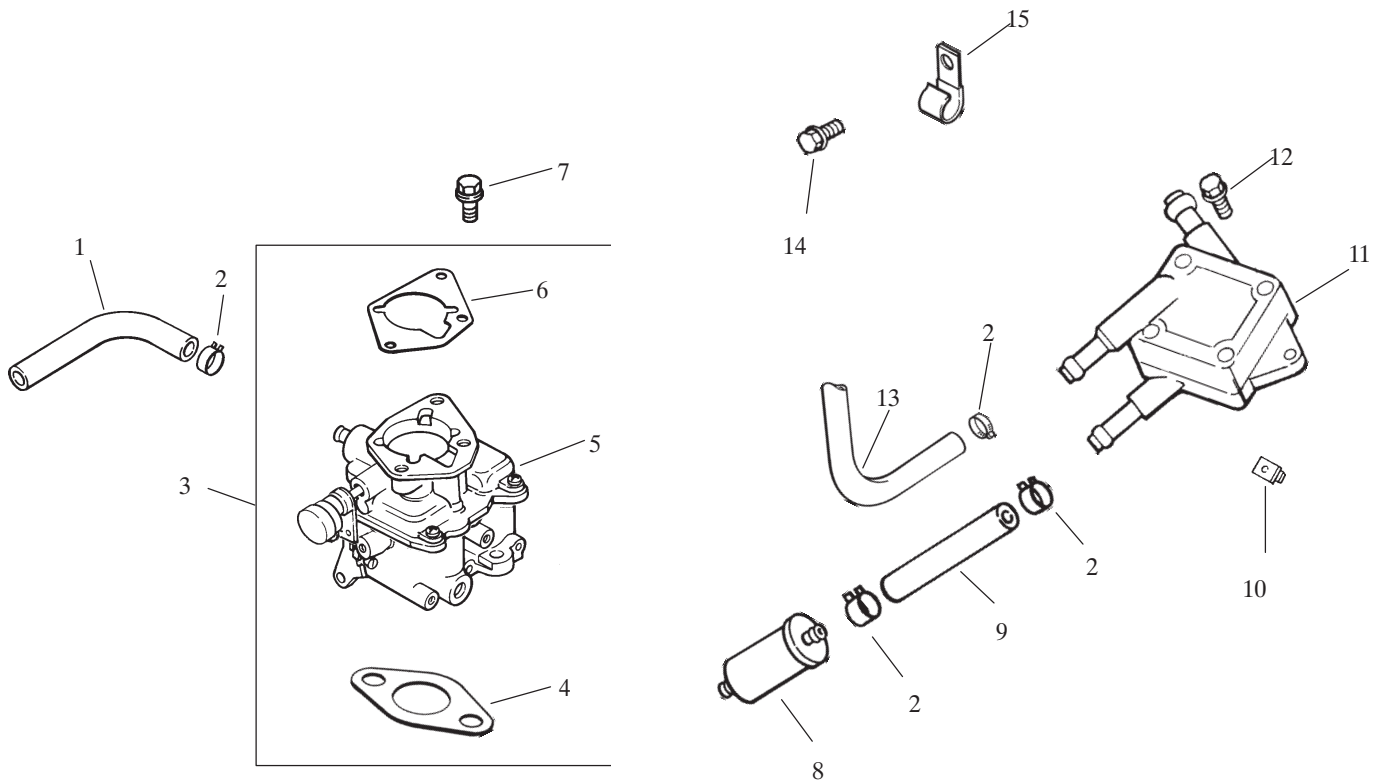


Group 7 – Starter Assembly Kohler CH23S-76569

Ref. No.	Part No.	Qty.	Description
1	M-841080-S	1	Nut, hex. flange M8x1.25
2	M-839080-S	2	Screw, hex. flange M8x1.25x80
3	25 098 08-S	1	Starter, solenoid shift assembly (Includes 4-8)
4	25 086 113-S	3	Screw, external torx hd.
5	25 435 04-S	1	Kit, solenoid (Includes 4)
6	25 755 33-S	1	Kit, pinion drive (Includes 7)
7	25 141 05-S	1	Ring
8	25 221 01-S	1	Kit, brush

Ref. No.	Part No.	Qty.	Description

Obtain Parts from Kohler



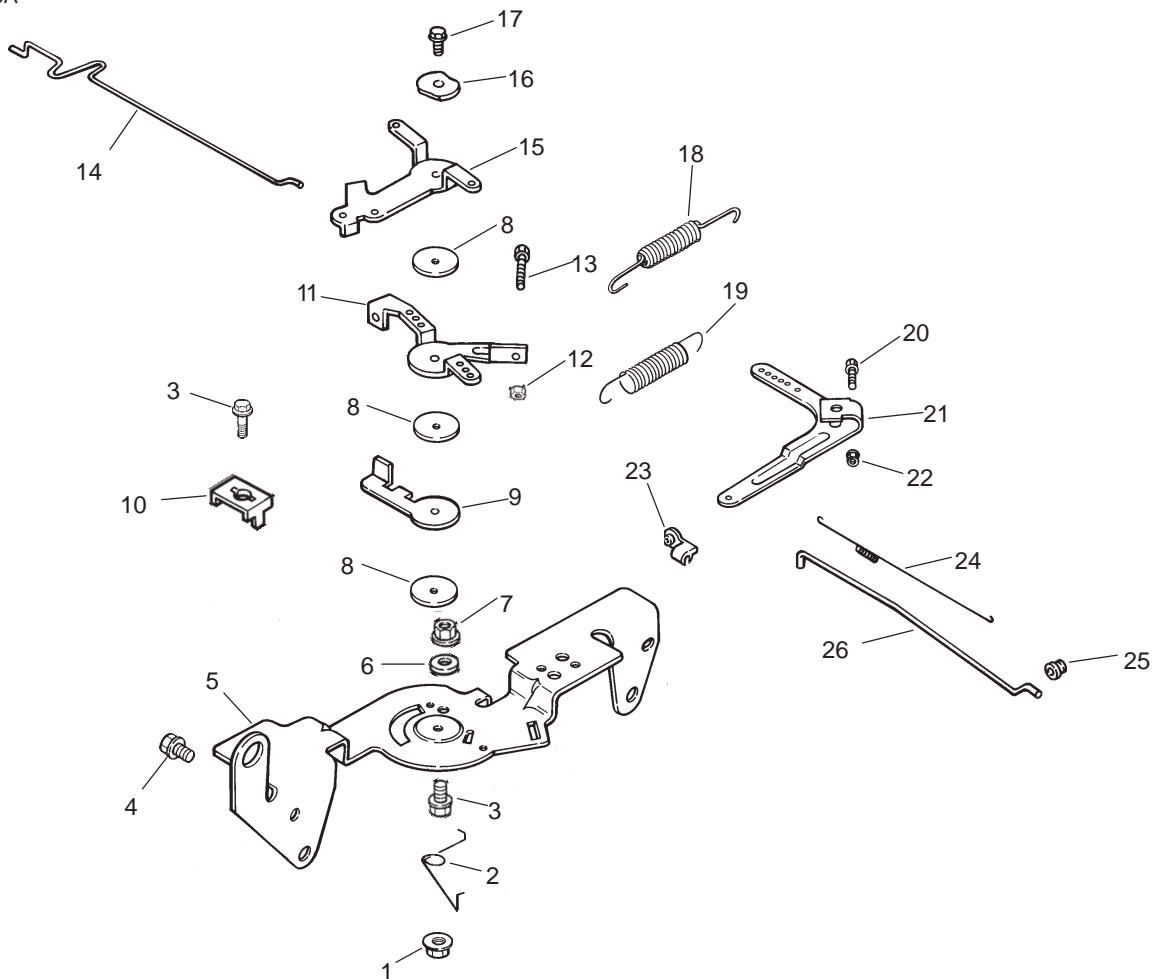
Group 8 – Fuel System Assembly Kohler CH23S-76569

Ref. No.	Part No.	Qty.	Description
1	25 353 32-S	1	Line, fuel 9-1/4"
2	25 237 14-S	6	Clamp, hose
3	24 853 58-S	1	Kit, carburetor w/gasket (Includes 4-6)
4	24 041 17-S	1	Gasket, carburetor
5	24 053 58	1	Carburetor assembly (For information only, not available separately) (Service with: 24 757 01-S, 24 757 02-S, 24 757 03-S, 24 757 07-S, 24 757 08-S, 24 757 09-S, 24 755 125-S)
6	24 041 06-S	1	Gasket, air cleaner
7	M-651030-S	2	Screw, hex. flange M6x1.0x30
8	24 050 02-S	1	Filter, fuel
9	25 353 15-S	1	Line, fuel 3-1/2"
10	24 100 01-S	2	Nut, plastic

Ref. No.	Part No.	Qty.	Description
11	24 393 16-S	1	Pump, fuel – pulse
12	24 086 12-S	2	Screw, hex. cap 18 mm
13	24 353 02-S	1	Line, fuel 15-1/2"
14	M-650012-S	1	Screw, hex. flange M6x1.0x10
15	47 154 01-S	1	Clip, cable
*	24 757 01-S	1	Kit, solenoid
*	24 757 02-S	1	Kit, float
*	24 757 03-S	1	Kit, carburetor repair
*	24 757 07-S	1	Kit, choke repair
*	24 757 08-S	1	Kit, repair – accelerator pump seal & bushing
*	24 757 09-S	1	Kit, repair – accelerator pump diaphragm
*	24 755 125-S	1	Kit, high altitude w/gaskets

Obtain Parts from Kohler

* Not Illustrated

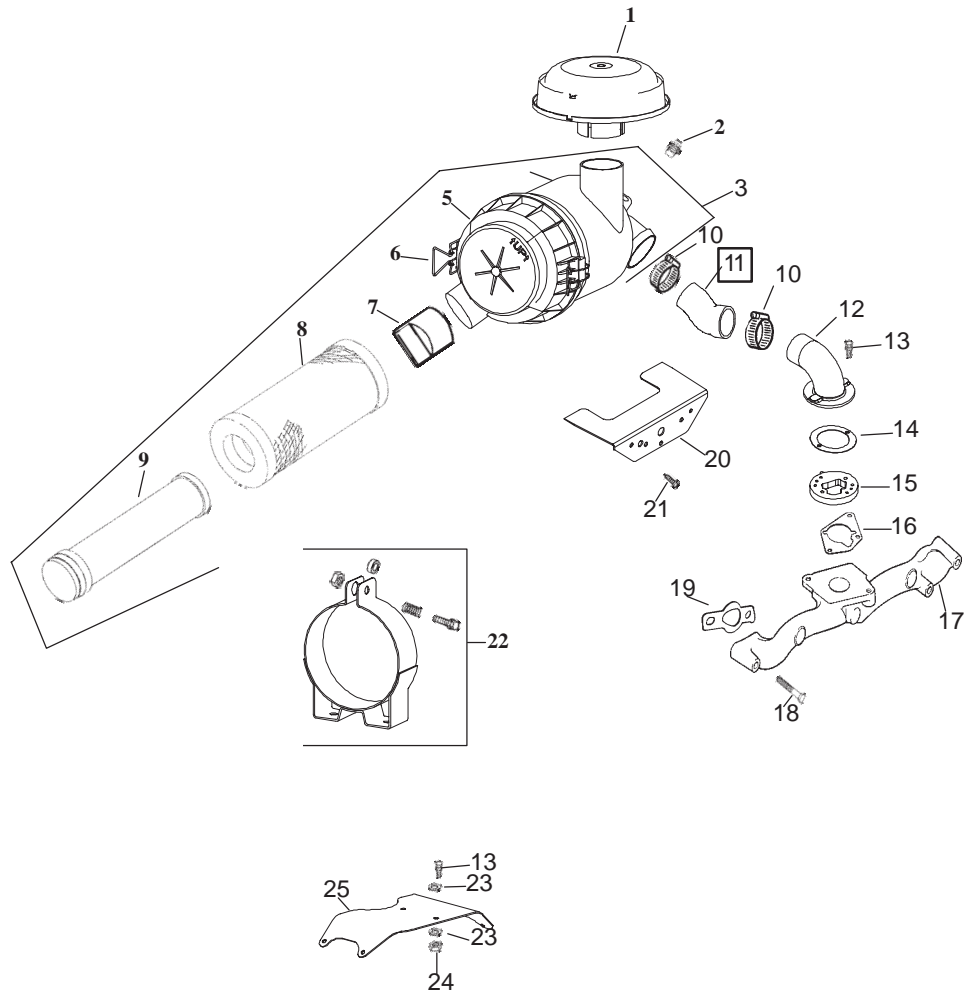


Group 9 – Engine Control Assembly Kohler CH23S-76569

Ref. No.	Part No.	Qty.	Description
1	M-547050-S	1	Nut, hex. lock M5x0.8
2	24 089 03-S	1	Spring, choke return
3	M-545016-S	3	Screw hex. flange M5x0.8x16
4	M-645016-S	4	Screw, hex. flange M6x1.0x16
5	24 126 56-S	1	Bracket, control
6	X-20-1-S	1	Washer, lock 1/4
7	M-541050-S	1	Nut, hex. flange M5x0.8
8	24 468 01-S	3	Washer, plain 1/4
9	24 090 07-S	1	Lever, throttle actuator
10	12 237 01-S	2	Clamp, cable
11	24 090 03-S	1	Lever, throttle control
12	M-446030-S	1	Nut, hex. flange M4x0.7
13	M-401030-S	1	Screw, hex. flange M4x0.7x30
14	24 079 21-S	1	Linkage, choke
15	24 090 05-S	1	Lever, choke
16	41 468 03-S	1	Washer, spring 1/4
17	M-545020-S	1	Screw, hex. flange M5x0.8x20
18	24 089 51-S	1	Spring, throttle limiter

Ref. No.	Part No.	Qty.	Description
19	24 089 46-S	1	Spring, governor
20	24 211 03-S	1	Bolt, rd. hd. sq. neck M6x1.0x25
21	24 090 33-S	1	Lever, governor
22	M-641060-S	1	Nut, hex. flange M6x1.0
23	25 158 11-S	1	Bushing, linkage retaining
24	24 089 01-S	1	Spring, linkage
25	25 158 08-S	1	Bushing, throttle linkage
26	24 079 01-S	1	Linkage, throttle

Obtain Parts from Kohler

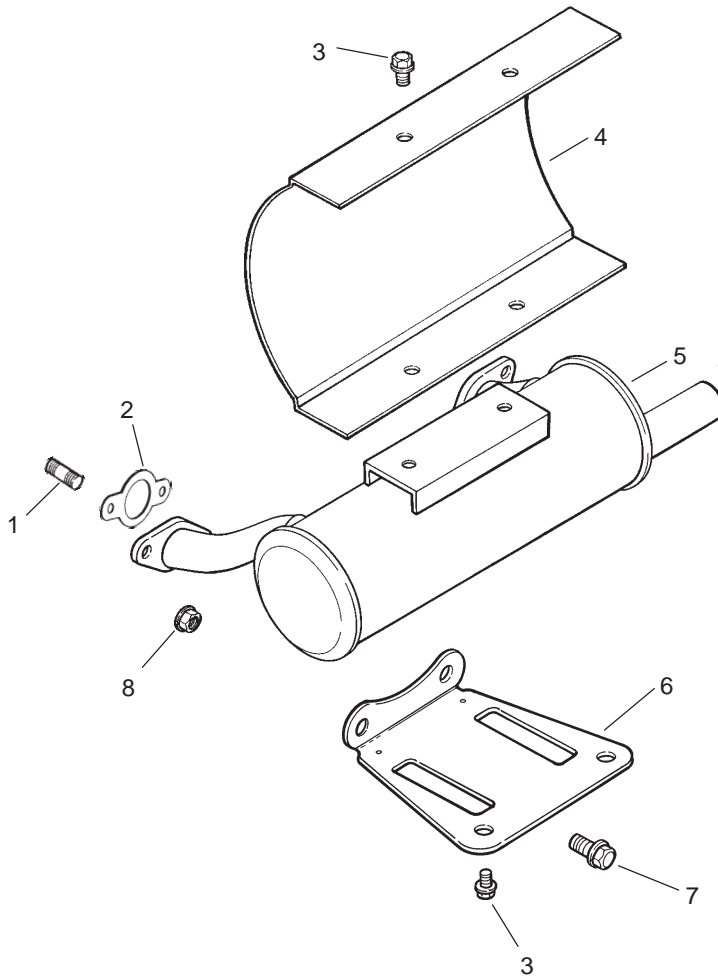


Group 10 – Air Intake/Filtration Assembly Kohler CH23S-76569

Ref. No.	Part No.	Qty.	Description	Ref. No.	Part No.	Qty.	Description
1	25 324 02-S	1	Hood, air cleaner	18	25 086 84-S	4	Screw, hex. flange M6x1.0x55
2	25 139 20-S	1	Plug, pipe	19	24 041 01-S	2	Gasket, intake manifold
3	25 048 07-S	1	Cleaner, heavy duty air (Includes 4-9)	20	24 314 25-S	1	Shield, debris
4	25 081 01-S	1	Housing, heavy duty air cleaner	21	24 086 06-S	2	Screw, phillips hd. 11-16x3/4"
5	25 096 06-S	1	Cover, heavy duty air cleaner	22	25 126 02-S	1	Bracket, air cleaner
6	25 154 05-S	2	Clip	23	X-25-73-S	4	Washer, plain 1/4"
7	24 462 07-S	1	Valve, dust ejector	24	M-647060-S	2	Nut, hex. lock M6x0.8
8	25 083 01-S	1	Element – primary	25	24 126 98-S	1	Bracket, air cleaner
9	25 083 04-S	1	Element safety filter	*	25 113 27-S	1	Decal, air cleaner
10	25 237 07-S	2	Clamp, hose				
11	24 326 32-S	1	Hose, air cleaner				
12	24 029 21-S	1	Adapter, remote air cleaner				
13	M-639016-S	6	Screw, hex. flange M6x1.0x16				
14	24 041 34-S	1	Gasket, adapter				
15	24 029 31-S	1	Adapter				
16	24 041 06-S	1	Gasket, air cleaner base				
17	24 164 14-S	1	Manifold, intake				

Obtain Parts from Kohler

* Not Illustrated



Group 11 – Exhaust Assembly Kohler CH23S-76569

Ref. No.	Part No.	Qty.	Description
1	25 072 04-S	4	Stud, M8x1.25x33
2	24 041 49-S	2	Gasket, exhaust
3	M-650012-S	4	Screw, hex. flange M6x1.0x12
4	24 314 04-S	1	Shield, heat
5	24 068 18-S	1	Muffler
6	24 126 12-S	1	Bracket, muffler
7	M-839020-S	2	Screw, hex. flange M8x1.25x20
8	M-841080-S	4	Nut, hex. flange M8x1.25
*	24 522 252	1	Short Block
*	24 782 27	1	Miniblock
*	24 755 113-S	1	Gasket Set

Ref. No.	Part No.	Qty.	Description

Obtain Parts from Kohler

* Not Illustrated

