



Wireless Hour Meter Kit

Greensmaster® 1000 Series Mower

Model No. 161-7380

Form No. 3470-692 Rev A

Installation Instructions

Preparing the Machine

1. Park the machine on a level surface.
2. Engage the parking brake.
3. Shut off the engine.
4. Remove the spark-plug wire from the spark plug; refer to your machine *Operator's Manual*.

Installing the Kit

1. Install the mount plate and regulator to the engine case using 2 flange nuts and 2 flange bolts as shown in [Figure 1](#).

Important: Install the ring terminal from the regulator connector on top of the regulator. ([Figure 1](#)).

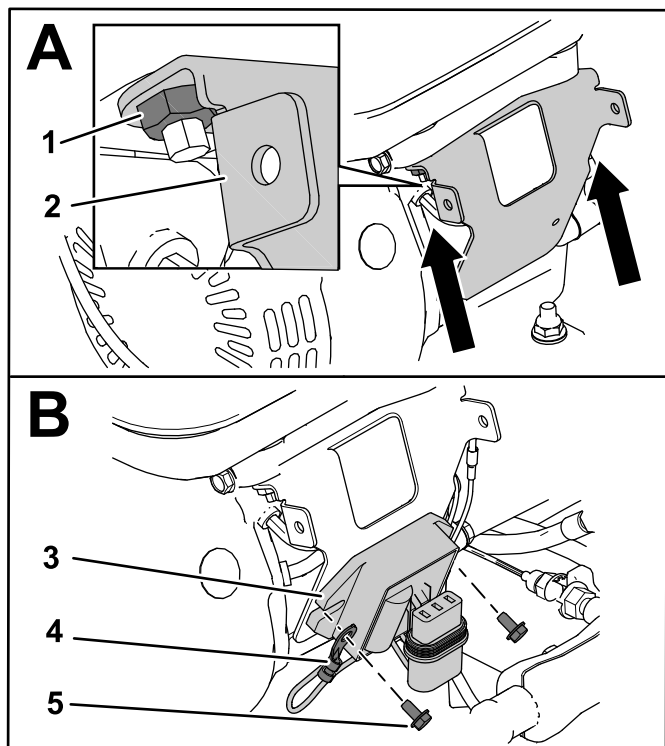
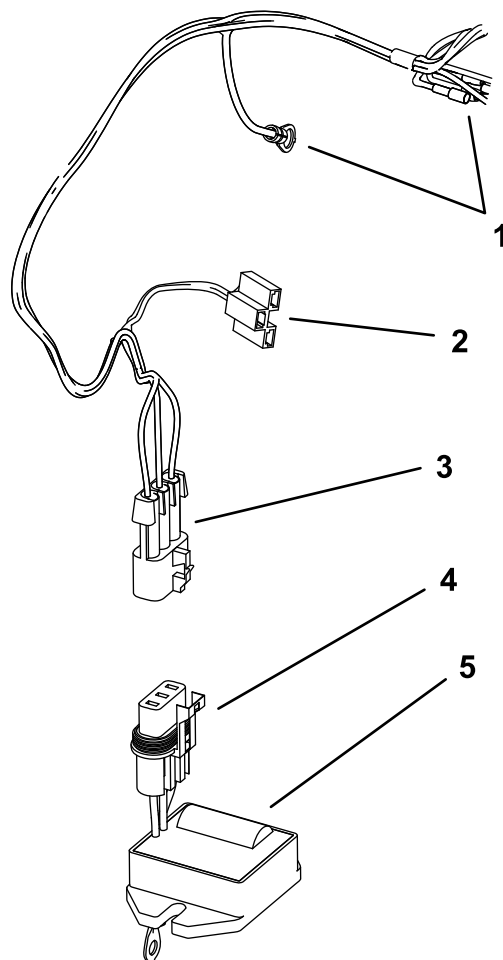


Figure 1

g515240

- | | |
|----------------|------------------|
| 1. Flange nuts | 4. Ring terminal |
| 2. Bracket | 5. Flange bolt |
| 3. Regulator | |

2. Connect the regulator connector to the wireless hour meter (WHM) kit wire harness ([Figure 2](#)).



g285913

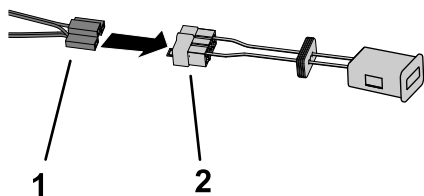
Figure 2

- | | |
|--------------------------------------|------------------------|
| 1. WHM harness — single connectors | 4. Regulator connector |
| 2. WHM harness — WHM connector | 5. Regulator |
| 3. WHM harness — regulator connector | |

3. Remove and discard the mounting brackets from the face of the WHM.



4. Connect the wireless hour meter to the WHM kit harness (Figure 3).



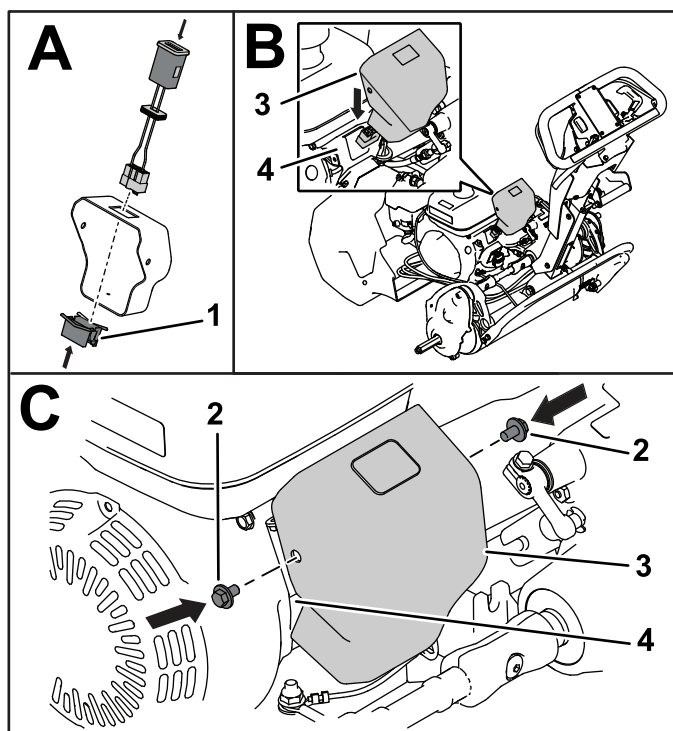
g285847

Figure 3

1. WHM harness — WHM connector 2. Wireless hour meter connector

5. Use the clip to install the WHM to the cover. Route the wireless harness through the bracket. Figure 4.
6. Install the cover onto the bracket and the wire-harness connections with 2 flange bolts as shown in Figure 4.

Important: Route the remaining loose wire-harness ends out of the notch in the wireless hour meter cover.



g515241

Figure 4

Wire harness connections not shown for clarity

1. Clip 3. Cover
2. Flange bolt 4. Bracket

7. Connect the WHM wire harness to the engine as follows:

For machines with the Light Kit **not** equipped:

- Connect the wire-harness end labeled J01 to the white end of the engine wire harness.
- Connect the wire-harness end labeled J02 to the green end of the main wire harness.
- Connect the wire-harness end labeled J03 to engine mounting bolt as a ground.
- Connect the wire-harness end labeled J04 to the white end of the main wire harness.
- Connect the wire-harness end labeled J05 to the green end of the engine wire harness.

For machines with the Light Kit **equipped**:

- Connect the wire-harness end labeled J01 to the white end of the engine wire harness.
- Connect the wire-harness end labeled J02 to the black end of the light-kit wire harness labeled J02.
- Connect the wire-harness end labeled J03 to engine mounting bolt as a ground.
- Connect the wire-harness end labeled J04 to the white end of the main wire harness.
- Connect the wire-harness end labeled J05 to the green end of the engine wire harness.
- Connect the white end of the light-kit wire harness (labeled J01) to the green end of the main wire harness.

Declaration of Incorporation

The Toro Company, 8111 Lyndale Ave. South, Bloomington, MN, USA declares that the following unit(s) conform(s) to the directives listed, when installed in accordance with the accompanying instructions onto certain Toro models as indicated on the relevant Declarations of Conformity.

1

Relevant technical documentation has been compiled as required per Part B of Annex VII of 2006/42/EC.

We will undertake to transmit, in response to requests by national authorities, relevant information on this partly completed machinery. The method of transmission shall be electronic transmittal.

This machinery shall not be put into service until incorporated into approved Toro models as indicated on the associated Declaration of Conformity and in accordance with all instructions, whereby it can be declared in conformity with all relevant Directives.

Certified:



Tom Langworthy
Engineering Director
8111 Lyndale Ave. South
Bloomington, MN 55420, USA
October 29, 2024

Authorized Representative:

Marcel Dutrieux
Manager European Product Integrity
Toro Europe NV
Nijverheidsstraat 5
2260 Oevel
Belgium



Count on it.