



# Multi Pro® 5800 Turf Sprayer with GeoLink® Precision Spray System

Form No. 3470-823 Rev A

Model No. 41394GK—Serial No. 400000000 and Up

Model No. 41636—Serial No. 415000000 and Up

## Software Guide

# Safety

## Autosteer Safety

The GeoLink Autosteer system provides steering guidance control, when the proper conditions are met, but you are responsible for driving the machine and must remain alert and in complete control of the machine at all times.

When using the control console for assisted steering during spraying operation, ensure that you operate the machine with attention to the following:

- The control console does not detect obstacles or hazards, keep the machine away from people, animals, buildings, and other structures.
- Do not operate the machine near high-voltage power lines or other overhead obstacles.
- Ensure that the operating area is clear of obstacles.
- Know the position of the machine and the ground (field) conditions at all times.
- Respond if satellite signals or the RTK correction is lost momentarily.

**Note:** When fallback mode is enabled, the system remains engaged if the RTK correction is lost and momentarily drops to float, estimated, or GPS.

The system only disengages if the GPS signal is lost. Take manual control if the GPS signal is lost.

Take manual control of the machine if an obstacle appears in the path of the machine or if the machine moves off of the guideline.



# Setup

## 1

## Installing the Plus+1 Service Tool

No Parts Required

### Downloading the Software

1. Go to Gateway and click on Service Library.



Figure 1

g483680

2. Select GeoLink Solutions.

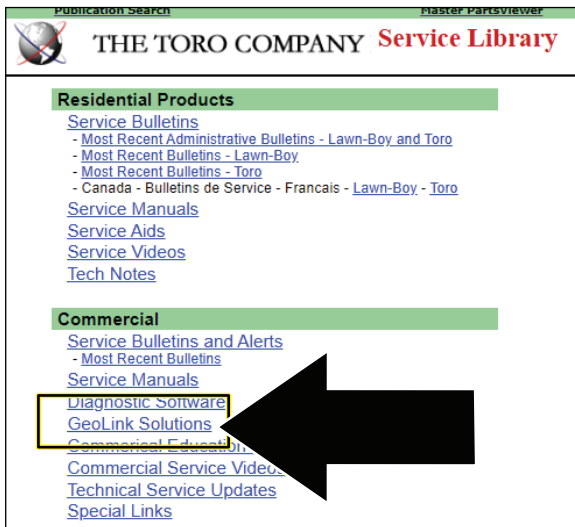


Figure 2

g483681

3. Select Autosteer Software.

**Note:** The file saves to the Downloads directory of your laptop computer.

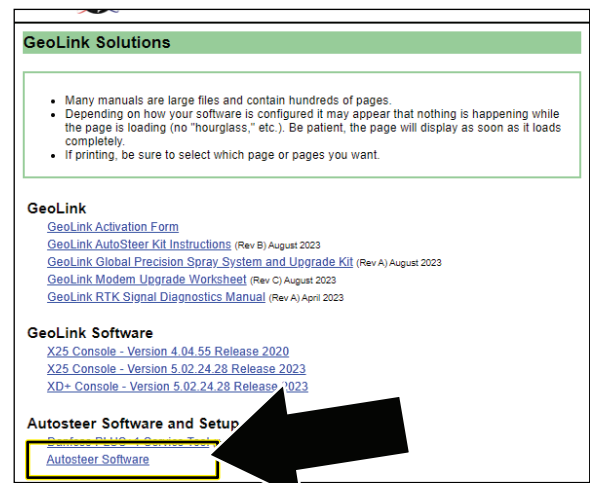


Figure 3

g483682

4. Select the download and click Extract all.

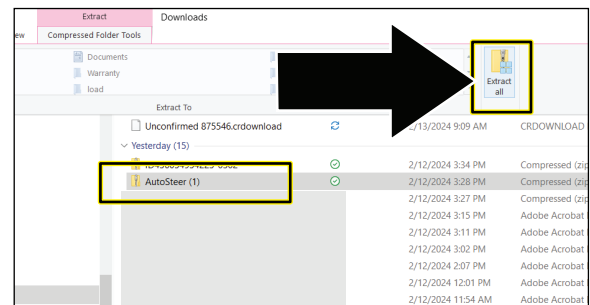


Figure 4

g483683

5. In the Extract Compressed dialog box, ensure that the SHOW EXTRACTED FILES WHEN COMPLETE check box is selected, and click the EXTRACT button.

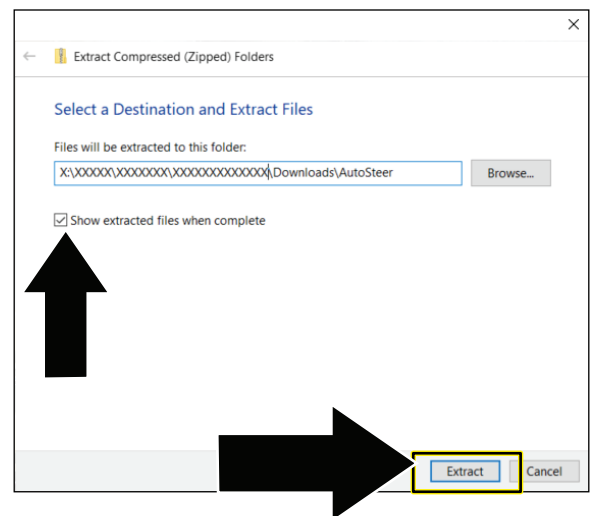


Figure 5

g483684

# Installing the Software and Driver Files

**Important:** The person installing the PLUS+1 Service tool must have administrative privileges on the laptop computer.

1. Double click the PLUS+1 ServiceTool 12.0.7 setup.exe file.

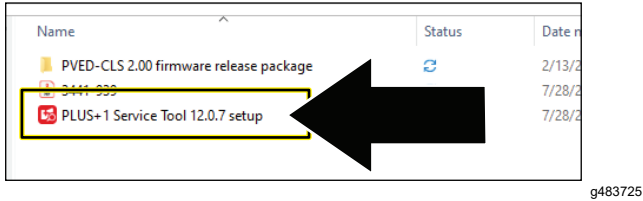


Figure 6

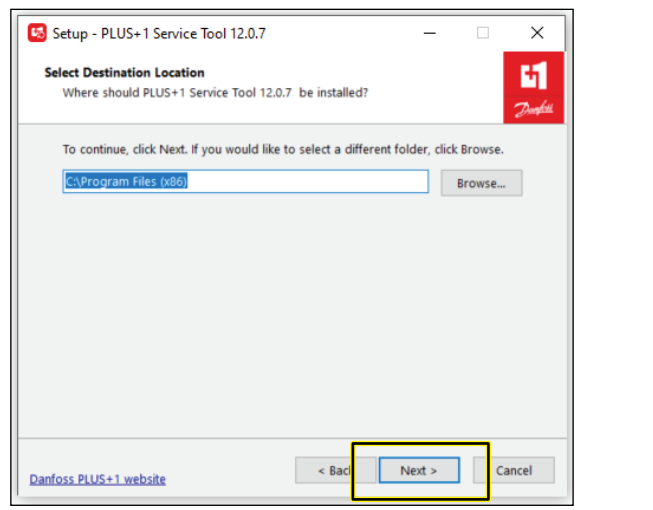


Figure 8

2. If the User Account Control dialog box displays, click the YES button (Figure 7).

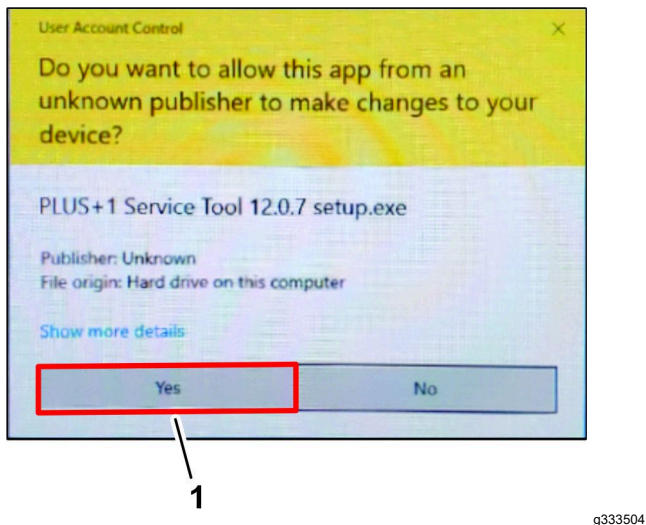


Figure 7

1. YES button

3. In the Select Destination Location dialog box, click the NEXT button.

4. In the Plus+1 Online dialog box, click the NEXT button.

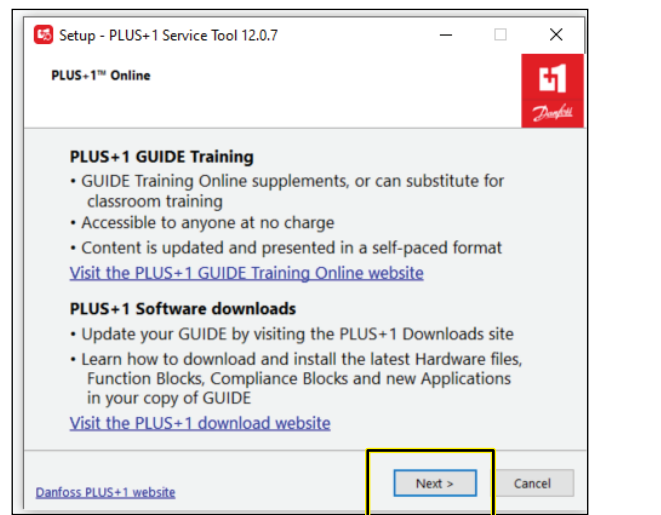


Figure 9

5. In the Select Additional Tasks dialog box, click the NEXT button.

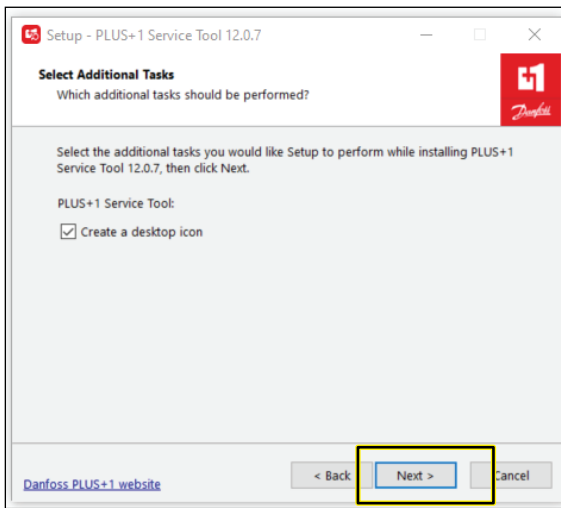


Figure 10

6. In the Ready to Install dialog box, click the INSTALL button.

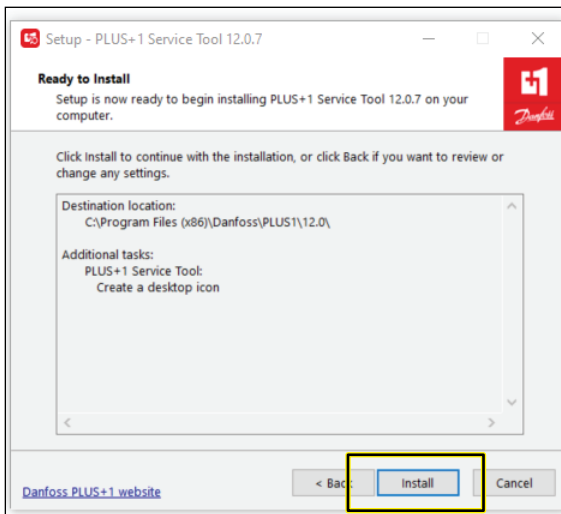


Figure 11

**Note:** The progress dialog box displays.

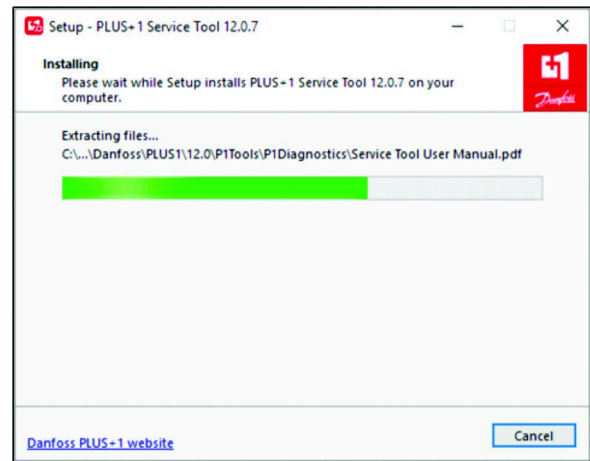


Figure 12

7. In the Completing Service Tool Setup Wizard dialog box, click the FINISHED button.

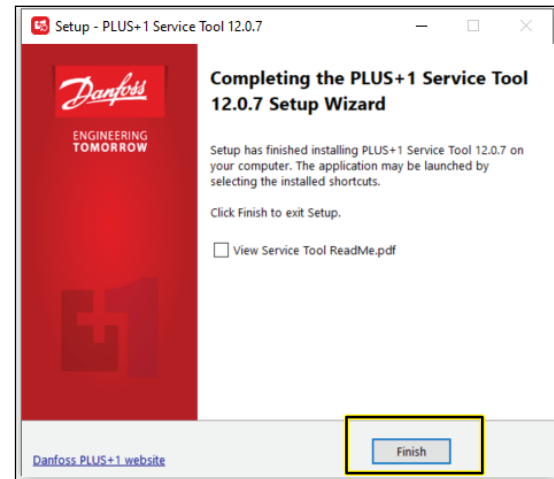
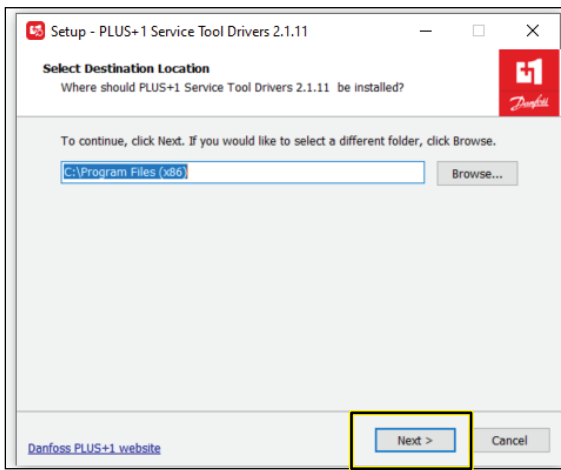


Figure 13

## Installing the Drivers

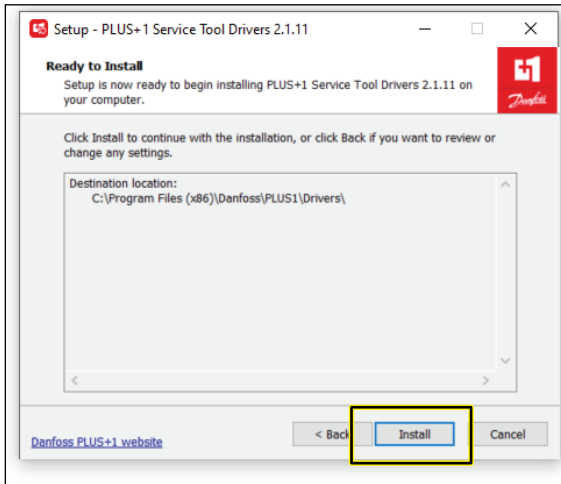
1. In the Select Destination Location dialog box, click the NEXT button.



**Figure 14**

g483719

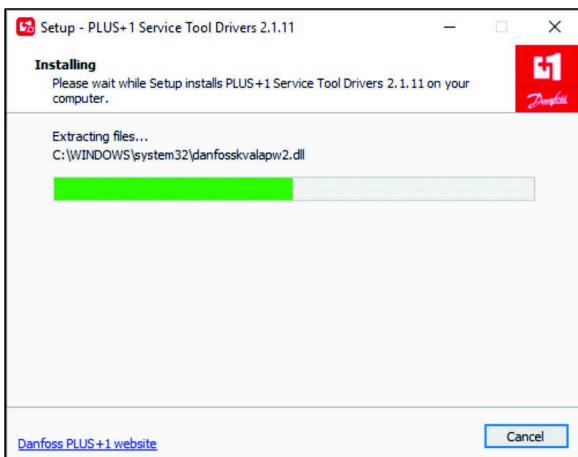
2. In the Ready to Install dialog box, click the INSTALL button.



**Figure 15**

g483720

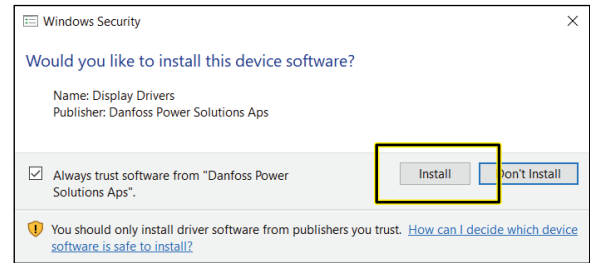
**Note:** The progress dialog box displays.



**Figure 16**

g333496

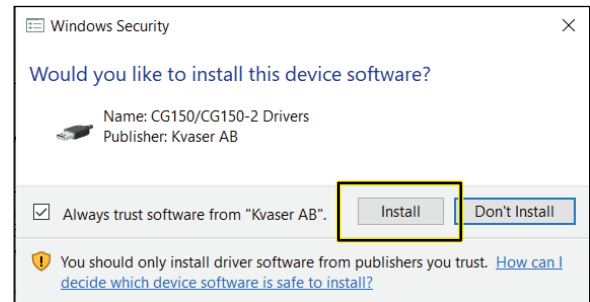
3. In the Would you like to install this device software dialog box, click the INSTALL button.



**Figure 17**

g483722

4. In the Would you like to install this device software dialog box, click the INSTALL button.



**Figure 18**

g483723

5. In the Completing Service Tool Drivers Setup Wizard dialog box, click the FINISHED button.

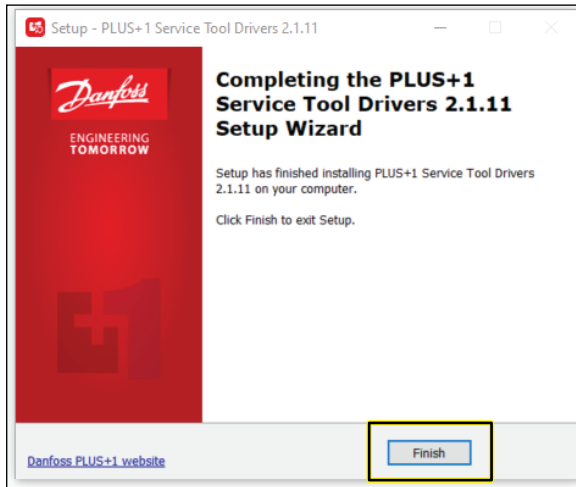


Figure 19

g483724



Figure 21

g483732

## Installing the Service and Data Files

1. Double click on the Plus+1 Service Tool icon.

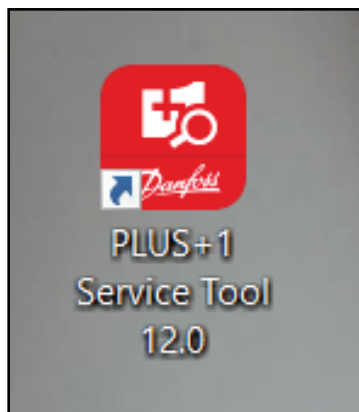


Figure 20

g483731

3. Click Ok on the confirmation screen.

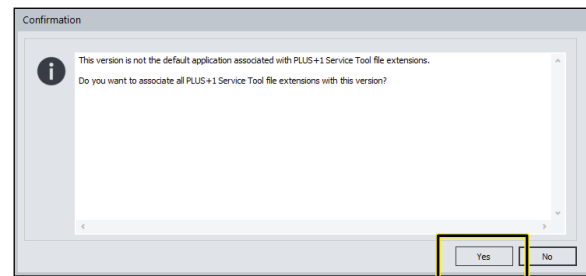


Figure 22

g483733

2. Read the license information, check the boxes noting you have read and agree to the agreement, and click Ok.

4. Click on the folder with magnifying glass icon to Scan for Service Application File.

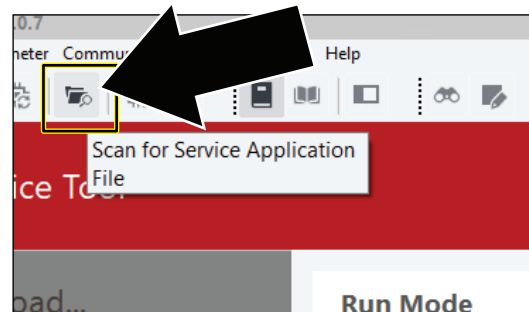


Figure 23

g483734

5. Navigate to the Service tool folder in the PVED-CLS 2.00 firmware release package folder.
6. Click on PVED-CLS\_2.00\_rev\_D and click OPEN.

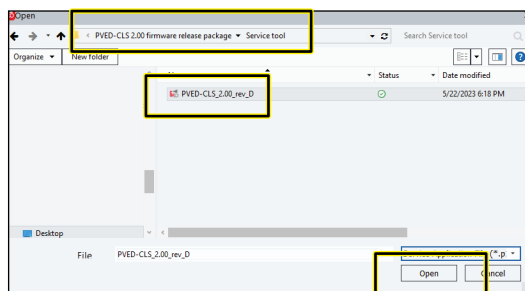


Figure 24

g483735

7. Click CLOSE if you receive this error. This is a passive error and will not effect the installation or use of this tool.

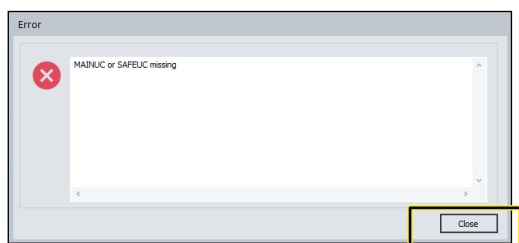


Figure 25

g483736

## Installing the Diagnostic Data

1. Click the FILE icon, and in the drop-down list, click the INSTALL DIAGNOSTIC DATA . . . icon.

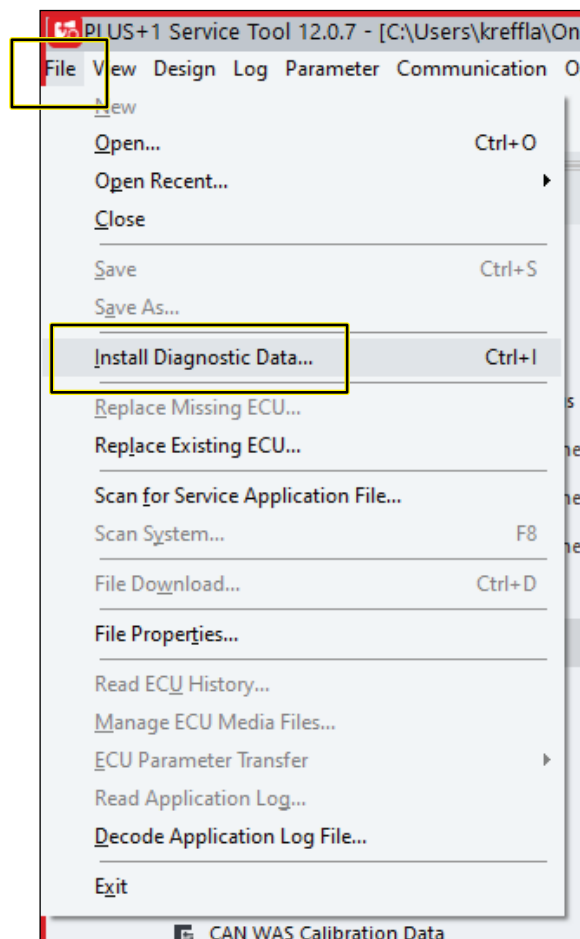


Figure 26

g483704

2. In the Install Diagnostic Data dialog box, click the PLUS+1 protocol icon, and press the INSTALL icon.

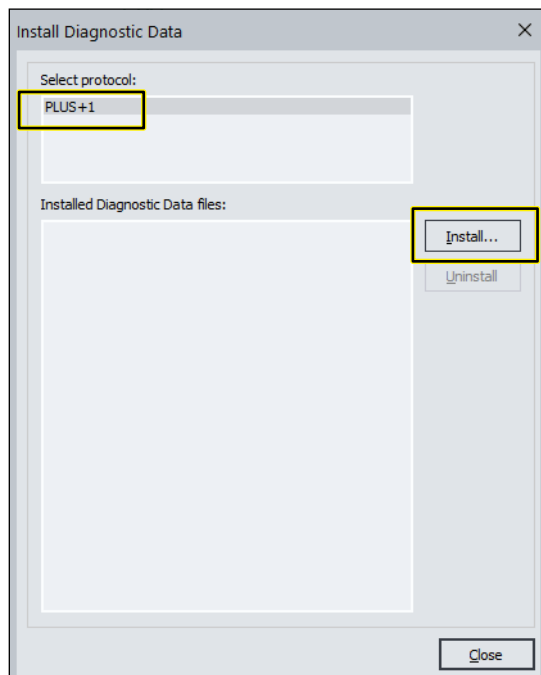


Figure 27

g483705

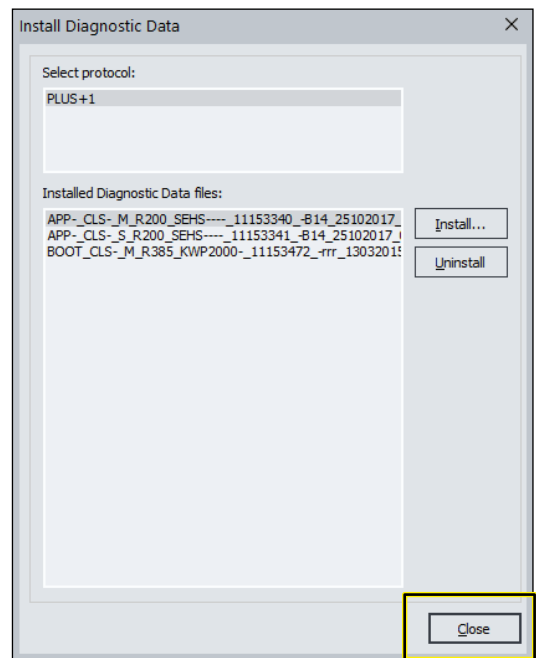


Figure 30

g483708

3. Navigate to the Diagnostic data files folder in the PVED-CLS 2.00 firmware release package folder.
4. Select all the files in this folder and click Ok.

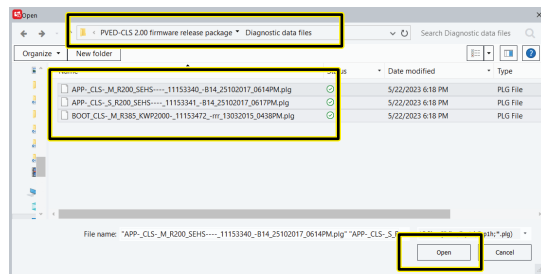


Figure 28

g483706

5. In the INSTALL DIAGNOSTIC DATA dialog box, click the CLOSE icon.

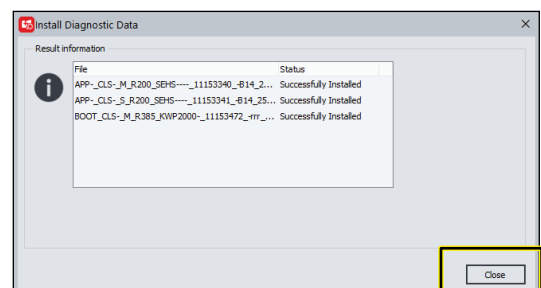


Figure 29

g483707

6. In the INSTALL DIAGNOSTIC DATA dialog box, click the CLOSE icon.

## Selecting the Gateway Channel

1. Plug a Toro Diag cable into the USB port of the laptop computer and open the Plus+1 software program.
2. On the ribbon bar, click the Communication button.

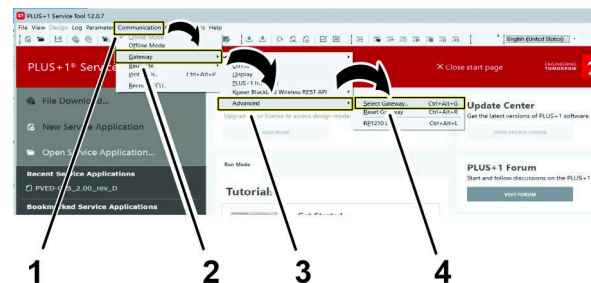


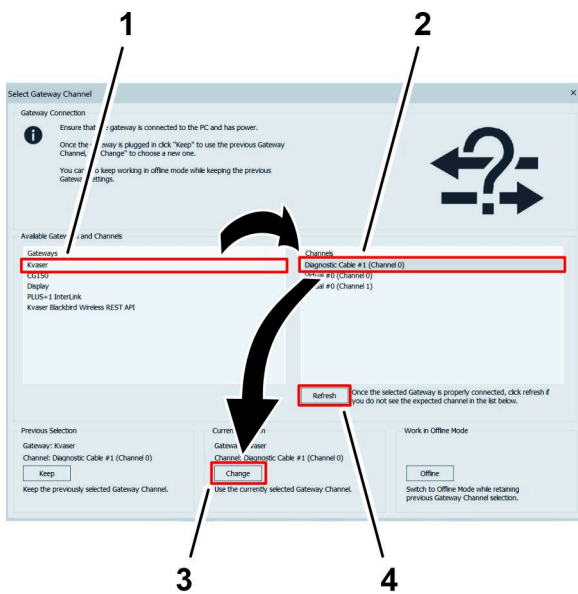
Figure 31

g332822

1. Communication button
2. Gateway button
3. Advanced button
4. Select Gateway... button

3. In the Communication drop-down menu, click the Gateway button.
4. In the Gateway drop-down menu, click the Advanced button.
5. In the Advanced drop-down menu, click the Select Gateway... button.
6. On the Select Gateway Channel screen, click the Kvaser option in the Gateways list.





g332837

**Figure 32**

1. Kvaser option (Gateways list)
2. Diagnostic Cable option (Channels menu)
3. CHANGE button (Current Selection heading)
4. Refresh button

7. In the Channels menu, click the Diagnostic Cable option.

**Note:** If a diagnostic cable option does not display in the Channels menu, verify that the Toro Diag cable is plugged into the USB port of the laptop computer, click the Refresh button on the Select Gateway Channel screen, and click the Diagnostic Cable option.

8. Click the CHANGE button under the Current Selection heading.

# Product Overview

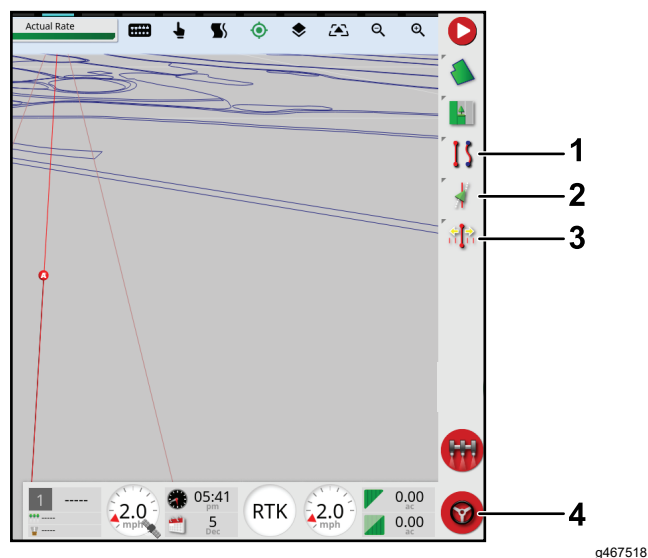


Figure 33

- 1. Guidelines icon
- 2. Steering options icon
- 3. Nudge icon
- 4. Autosteer (steering wheel) engage/disengage icon

# Controls

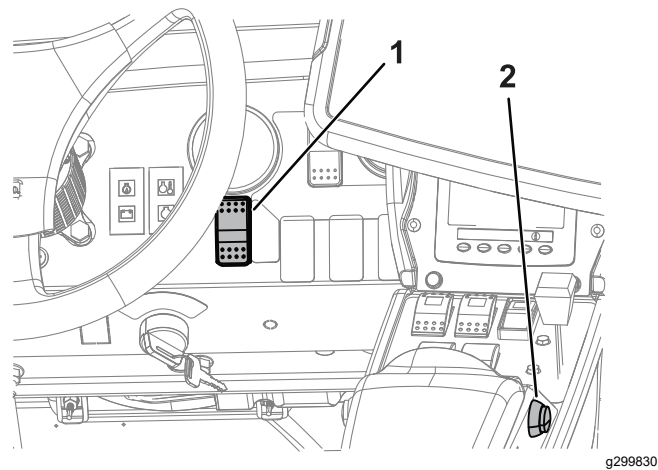


Figure 34

- 1. Autosteer enable(spray)/transport switch
- 2. Autosteer engage/disengage switch

## Enable/Transport Switch

Located on the dash console

Use the Autosteer enable/transport switch to enable the steering assist (Spray Mode) function or put the machine in transport mode.

## Engage/Disengage Switch

Located on the dash console and the console armrest




Use the Autosteer engage/disengage switch to engage or disengage the steering assist function.

Figure 33 shows the engage/disengage switch displayed in the control console.

# Operation

## Understanding the Icons

The color of the icon changes with the state of the system.

Icon color	Auto Steer State	Description
 Red	Not engaged	Autosteer is not engaged and not active. Press the Autosteer steering wheel icon (Figure 33) to see the condition(s) preventing the system from engaging.
 Yellow	Delayed engage	While in the stopped position and near a guideline, press the Autosteer steering wheel icon twice (double click). Autosteer engages when the minimum speed is reached within 15 seconds.
 White	Standby	The steering assist function is ready to use.
 Green	Engaged	Autosteer is engaged and active. Select the Autosteer steering wheel icon to return to manual steering mode. Note: The icon may briefly flash blue before turning green.

## Understanding the Alarms

### Visual alarms

- **STEERING ENGAGED**—a visual alarm displays when the steering assist function engages (Figure 35).

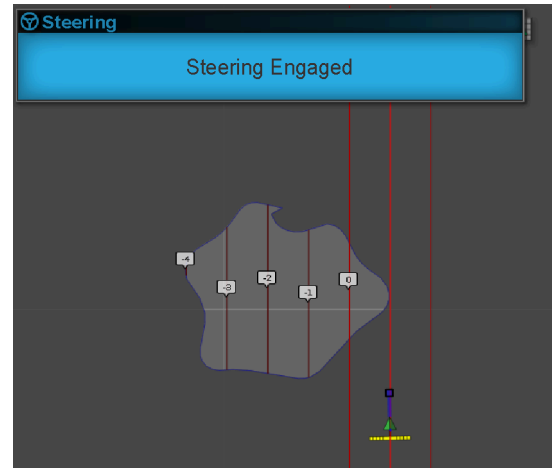


Figure 35

g242636

- **STEERING DISENGAGED**—a visual alarm displays when the steering assist function disengages (Figure 36). The system may disengage because of the following causes:
  - Weak satellite signal.
  - The GPS system loses the guideline or a degradation of the RTK connection.
  - You manually turn the steering wheel.



Figure 36

g242635

### Audible alarm

The audible alarm sounds when you disengage or engage the steering assist function.

# Understanding the Steering Options Menu

## Using the Status Screen

The status screen displays the conditions required for operating the machine with Autosteer.

- The conditions marked with a green indicator are ready for operation.
  - The conditions marked with a red indicator show that the steering assist function is not ready for operation.
1. Navigate to the guidance toolbar and press the Autosteer icon.
  2. Review the status of each condition in the list. Perform 1 of the following:
    - Press the Steering Alarm Icon at the bottom left of the screen to display the list of steering alarms.
    - Press the Steering Alarm information icon, the red button next to the confirm icon, to see detailed information regarding the steering alarms.
    - Press the Confirm icon to return to the main screen.

**Important:** Before using the steering assist function, complete the conditions with red indicators, working through the conditions from top to bottom in the status screen.

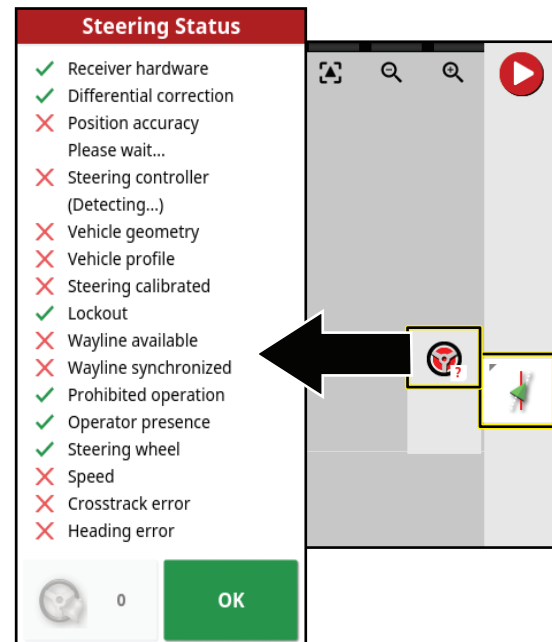


Figure 37

g467519

## Steering Status Table

Condition	Description when the condition displays in red:
Receiver hardware	Check that the receiver is connected and getting electrical power.
Differential corrections	The control console may not match the correction source requirements.
Position accuracy	The satellite receiver needs time for signal convergence. Check the number and color of the satellite icons on the control console. Drive the machine to a clearing with no overhead power lines.
Steering controller	Check that the controller is connected and getting electrical power.
Vehicle geometry	The vehicle geometry is incorrect. Select a new vehicle profile.
Vehicle profile	Check which vehicle is selected in the controller and check the geometry settings.
Steering calibrated	The steering needs to be calibrated; refer to your Toro Distributor or Toro's NSN Service Center.
Lockout	The steering system is in transport mode, there is a fault with the wheel angle sensor, or the steering controller has reported an error.
Guideline (wayline) available	The machine is too far from the guideline—drive closer to the guideline. Check that the guideline is created and selected.
Guideline (wayline) synchronized	The guideline is not loaded. Check that the satellite receiver has a satellite signal and the receiver loads the guideline. It may take time to upload guidelines to a satellite receiver, particularly for large curved guidelines.
Prohibited operation	The system cannot engage when certain actions are performed, such as steering calibration, changing GPS settings, or exporting a job.
Operator presence	Sit in the operator's seat.
Steering wheel	Loosely hold the steering wheel when engaging the steering assist function.
Speed	Drive the machine between 1 to 12.9 kph (0.7 to 8 mph). The required speed may vary by machine.

## Steering Status Table (cont'd.)

Condition	Description when the condition displays in red:
Crosstrack error	Drive the machine closer to the guideline before engaging the steering assist function.
Heading error	Check the angle or vehicle speed that the machine is traveling when approaching a guideline. Check the compass calibration.

# Using the Guidelines Menu

## Displaying Programmed Guidelines

1. Press the guideline menu icon.

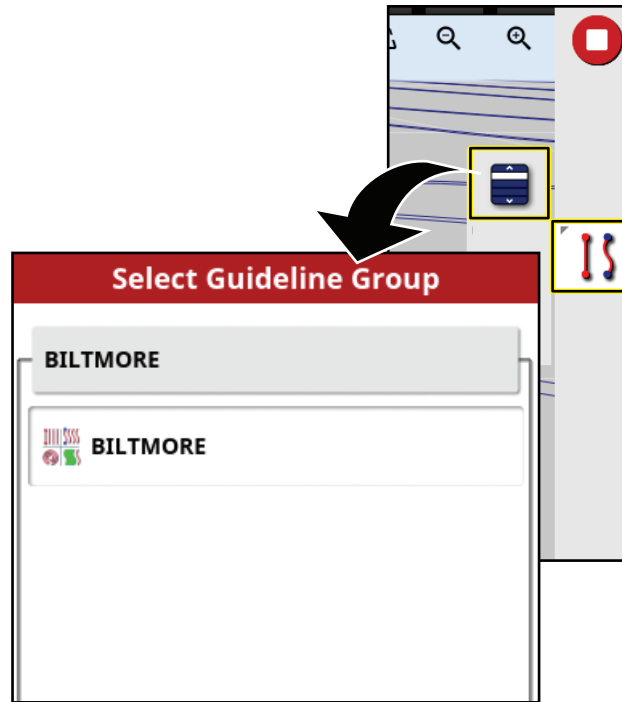


Figure 38

g467806

2. Press the select guideline menu.  
Then select the AB line menu or the select curve menu appears.
3. For longer lists of guidelines, swipe the scroll bar to navigate the full list of guidelines.

## Creating a Straight Guideline

To create a guideline start by defining the starting point (point A) and the end point (point B). This AB line is used to establish the parallel guidelines to cover the whole field or a boundary.

1. Drive the machine to the starting point of a guideline.
2. Press the guideline menu icon and press the add guideline icon.
3. Select the straight icon.

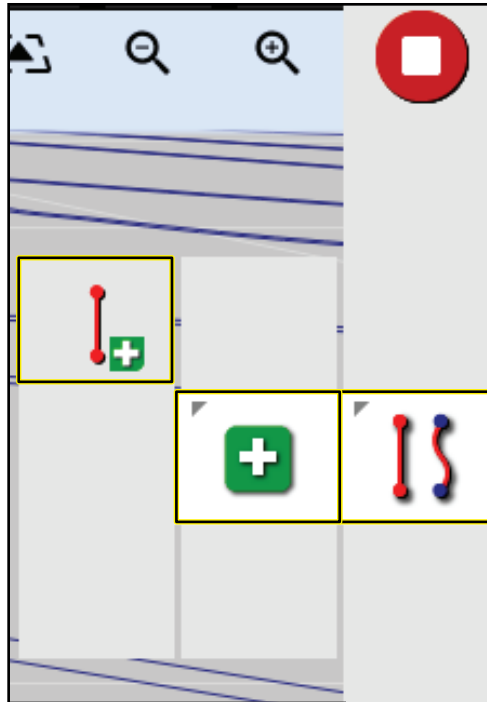


Figure 39

g467803

4. Press the set point A icon.  
Point B will display in the control console.
5. Drive the machine to the other side of the field boundary to the location where you want the AB guideline to reference.
6. Press the set point B icon.

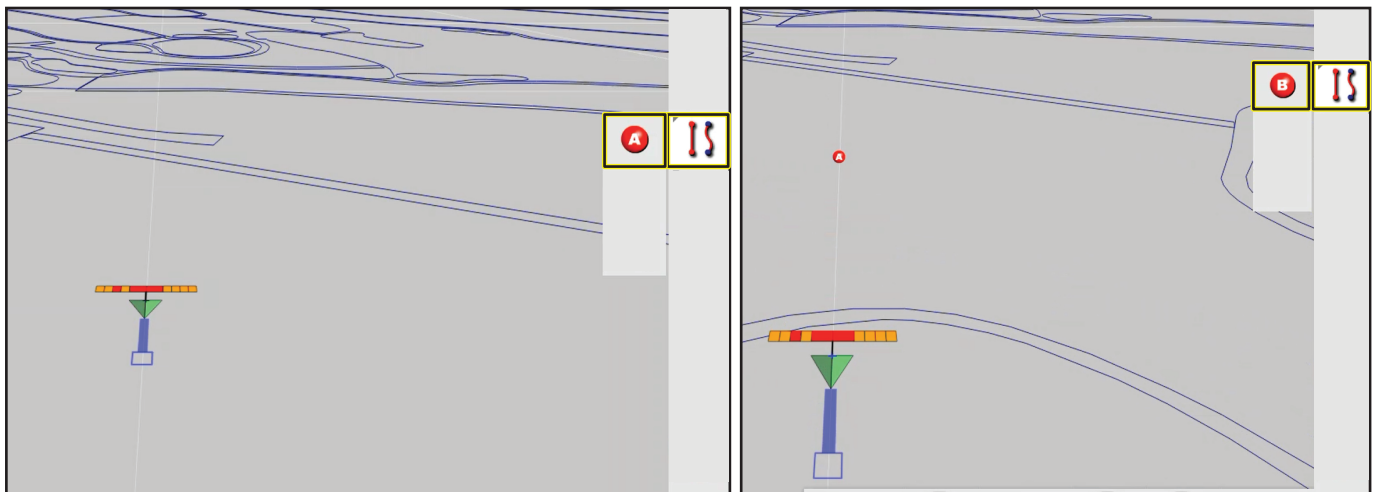


Figure 40

g470844

7. The console displays the options to rename or activate the new guideline.

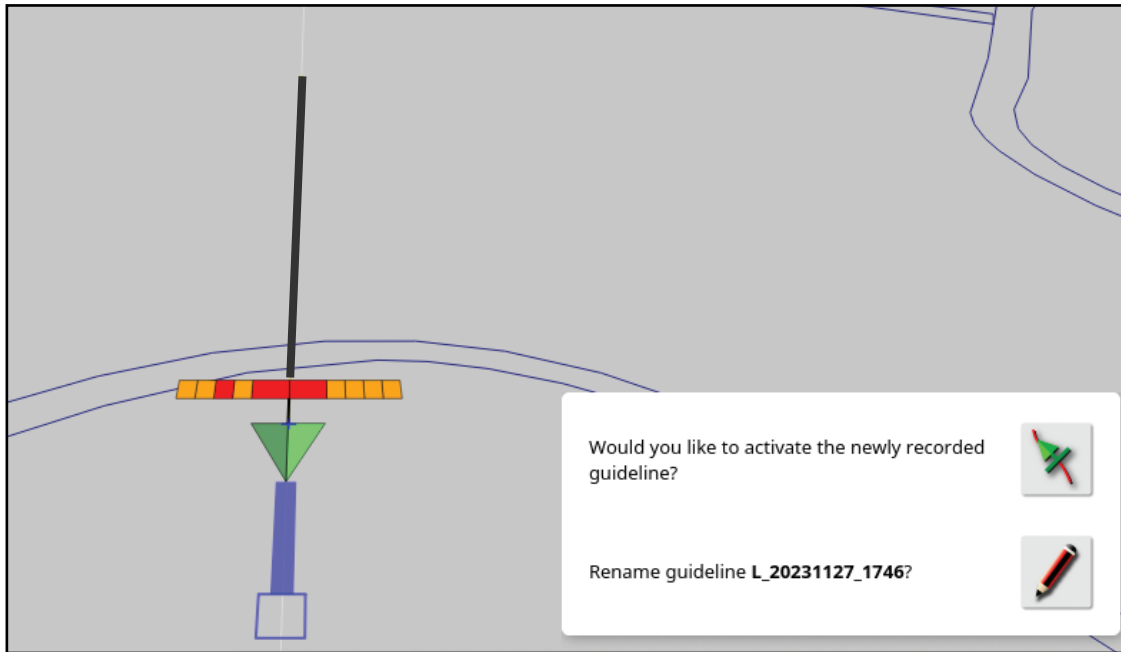


Figure 41

g467789

**Note:** The machine will drive straight at the end of a guideline.

## Creating a Curve Guideline

1. Drive the machine to the starting point of a guideline.
2. Press the guideline menu icon, press the add guideline icon, then the curved guideline icon.

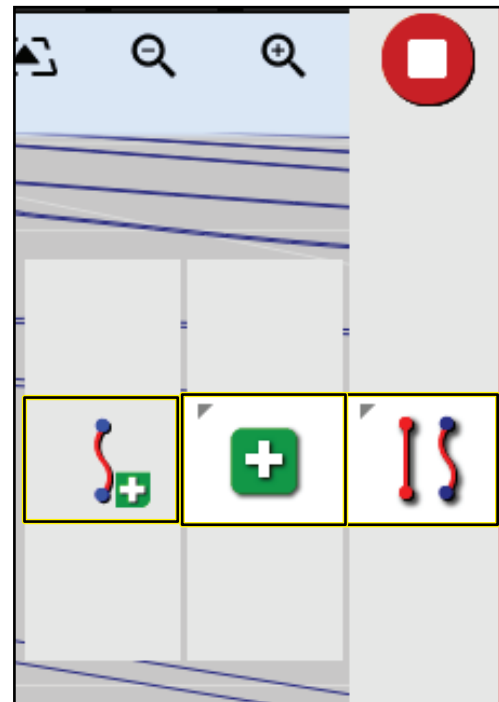


Figure 42

g467796

3. Press the Set Point A icon.  
Point B will display in the control console.



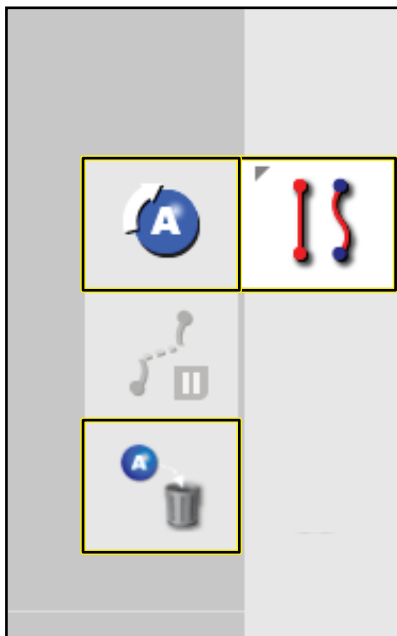


Figure 43

g467794

4. Drive the machine along the contour path of the field boundary.

The control console displays the path with a red line.

**Note:** Press the pause/resume recording icon to temporarily stop and start the recording of the path.

5. Press the Set Point B icon.

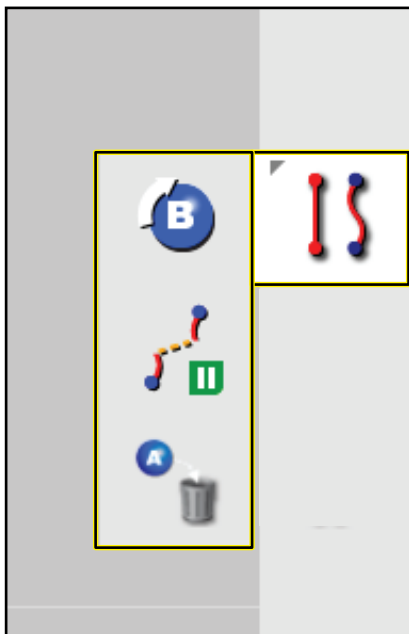


Figure 44

g467795

## Using Guidelock Guidance Mode

Guidelock guidance model generates a curve based on existing coverage.

Select the guidelock icon  on the top of the display .

**Note:** The black (or white) icon indicates that guidelock mode is off and the colored icon indicates that it is on.

## Using boundary steering

Boundary steering creates a guideline inside the boundary and is offset by half an implement width away from the boundary. The offset width can be adjusted using the nudge menu.

Ensure that the guideline is a sufficient distance away from the boundary to avoid colliding with anything.

As the vehicle moves towards the center of the field, more guidelines are created. Guidelines are spaced one implement width apart.

To create a boundary, refer to your *GeoLink Software Guide*.

1. Enable boundary steering in the setup menu.

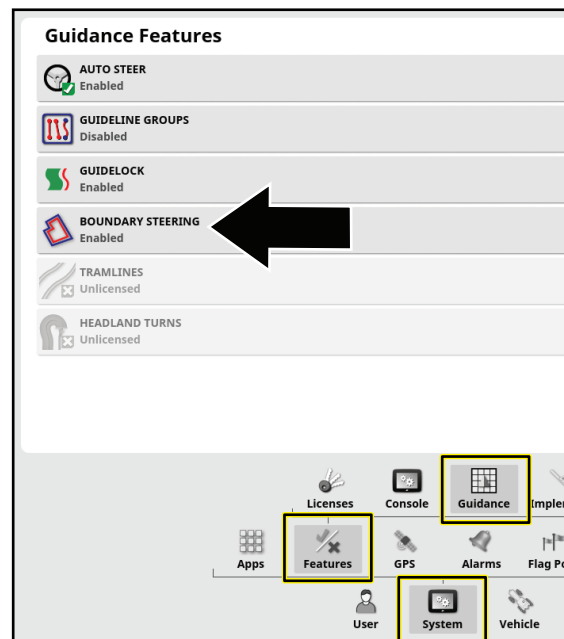


Figure 45

g468381

**Note:** The machine will drive straight at the end of a guideline.

2. Press and hold to select the boundary on the display.

The boundary is highlighted on the display.

3. Select the boundary guideline icon from the popup menu.

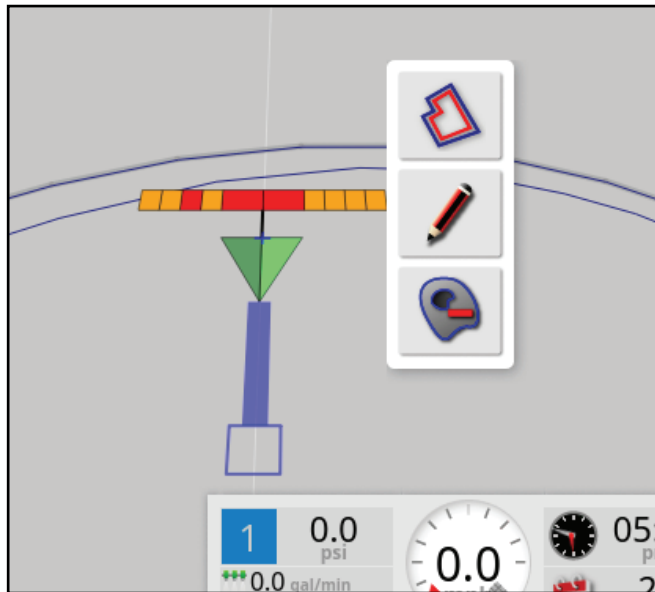


Figure 46

g468380

## Calibrating

### Calibrating the Compass

Ensure that the GeoLink compass is calibrated, refer to the GeoLink *Software Guide* for your machine.

### Enabling AutoSteer

1. Rotate the key to the ON position.
2. Start the X control console, and press the SETUP icon.
3. Press the SYSTEM icon, FEATURES icon, and the GUIDANCE icon.

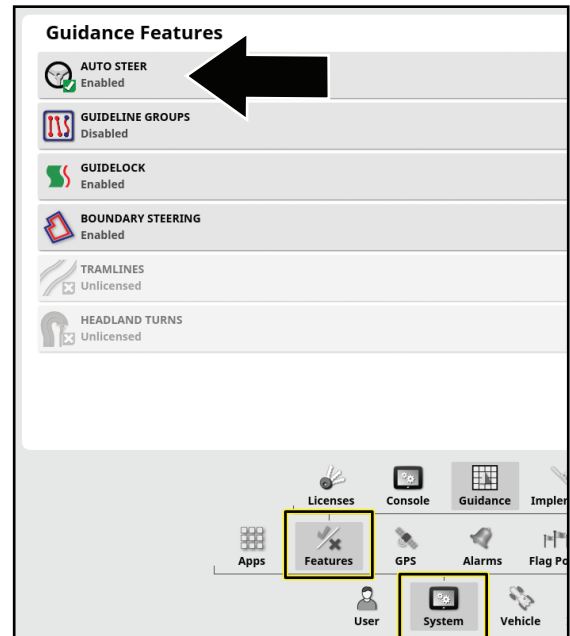



Figure 47

g470814

4. Press the AUTO STEER icon .
5. In the dialog box, press the ENABLE icon, and press the confirm icon.

### Setting the Steering Engage Value

1. On the setup screen, press the USER icon, and the ACCESS LEVEL icon.
2. On the user access screen, ACCESS LEVEL icon.

3. In the dialog box, press the EXPERT icon, and press the confirm icon.
4. Press the PASSWORD icon, type the dealer password with the pop-up keyboard window, and press the confirm icon.

**Note:** The user access level displays dealer.

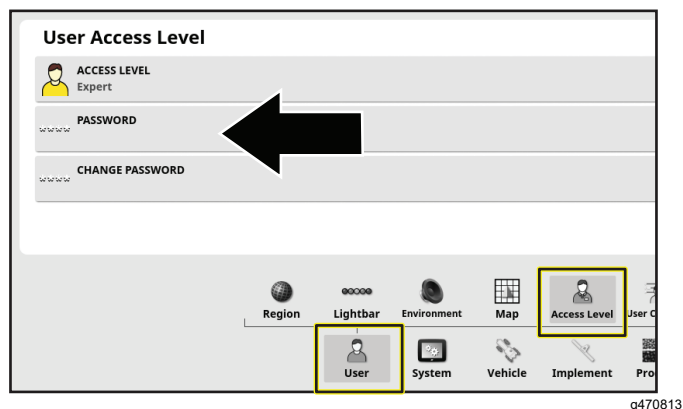


Figure 48

5. Press the VEHICLE icon, and press the STEERING icon.

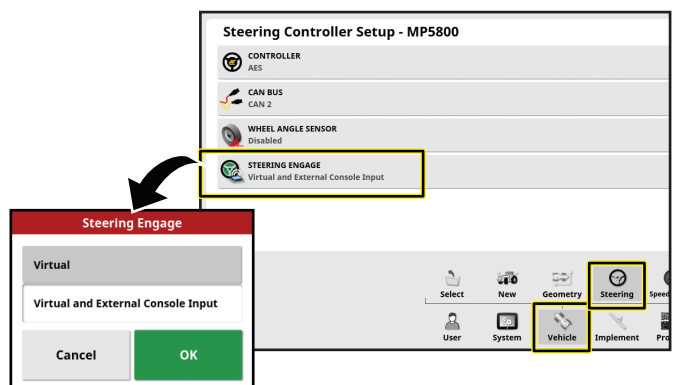


Figure 49

6. Press the STEERING ENGAGE icon.
7. In the dialog box, press the VIRTUAL AND EXTERNAL CONSOLE INPUT icon, and press the confirm icon.

## Calibrating the Wheel Angle Sensor

1. Move the machine to an open, flat area; clear of trees and buildings; and where you can drive the machine in a straight line for 92 m (300 ft).
2. Press the STEERING OPTIONS icon.

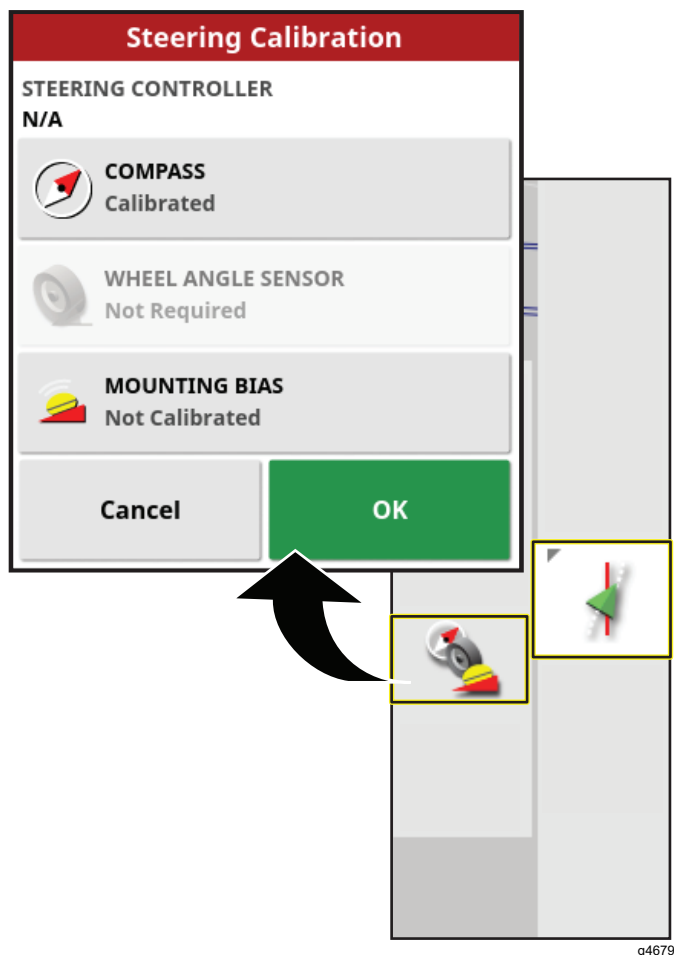


Figure 50

3. Press the STEERING CALIBRATION icon.
4. Press the WHEEL ANGLE SENSOR icon.  
The wheel angle sensor calibration wizard starts.  
**Note:** If a NOT INITIALIZED message displays in the control console, drive the machine for several minutes.
5. At step 1, wait until the wheel angle sensor calibration initializes, and press the next step icon.

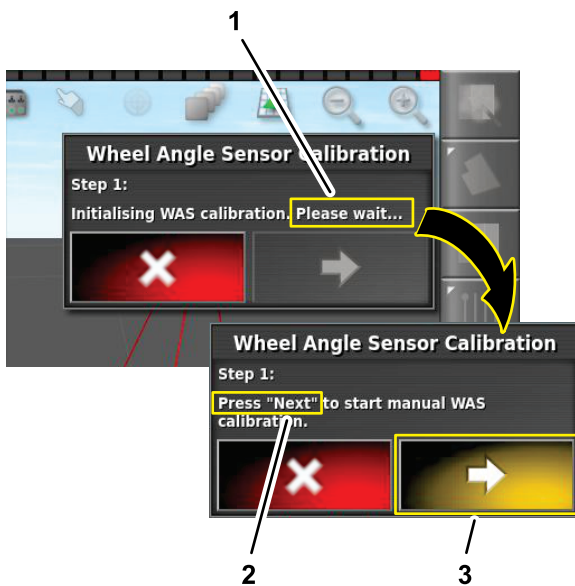


Figure 51

1. Initializing ... wait message
2. Step 1 press NEXT message
3. Next step icon

6. At step 2, fully turn the steering wheel to the left, stop, and press the next step icon.

**Important:** Verify that the wheel-angle sensor values change when the steer wheel turns.

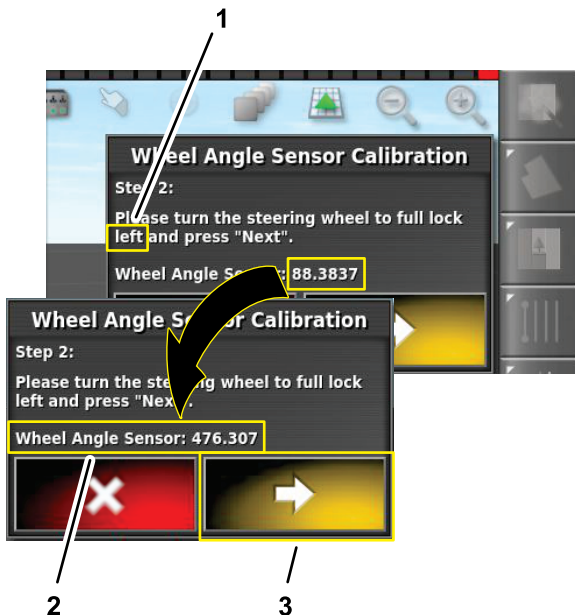


Figure 52

1. Step 2: turn the steering wheel left message
2. Wheel-angle sensor value
3. Next step icon

7. At step 3, fully turn the steering wheel to the right, stop, and press the next step icon.

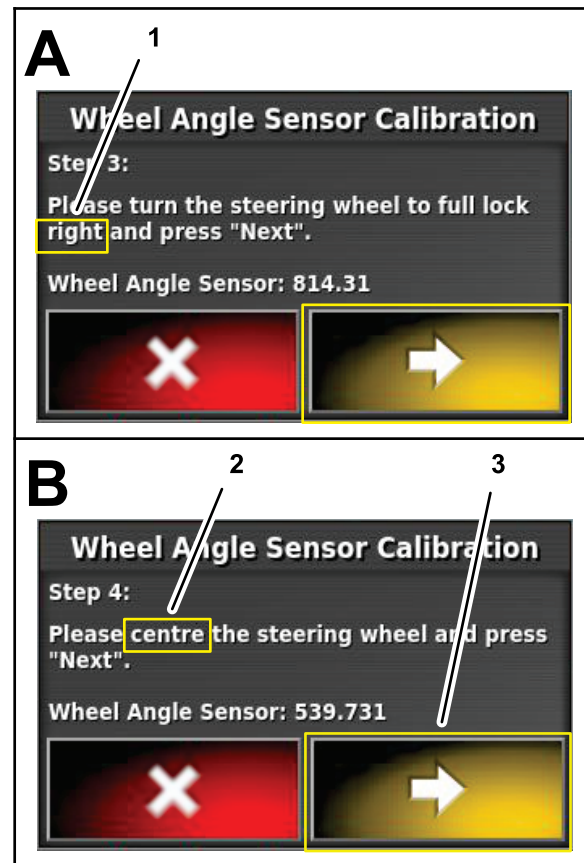
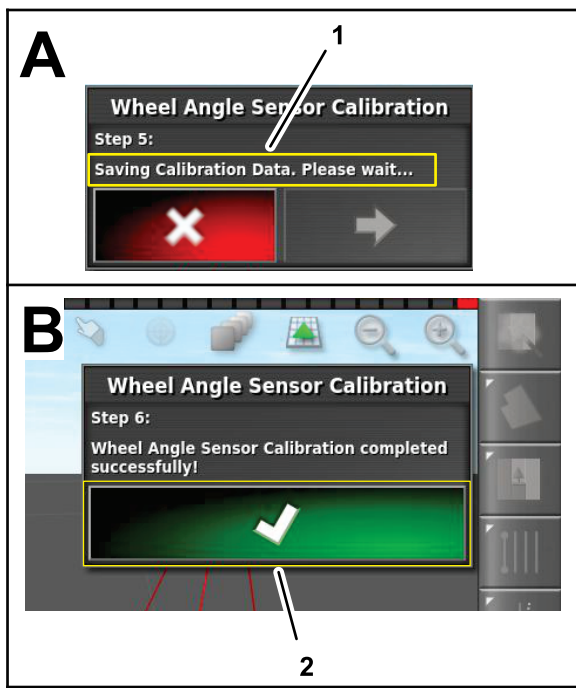


Figure 53

1. Step 3: turn the steering wheel right message
2. Step 4: turn the steering wheel to center message
3. Next step icon

8. At step 4, turn the steering wheel until the tires align straight ahead, stop, and press the next step icon.
9. At step 5, wait until the wheel angle sensor calibration saves data, and press the next step icon.



**Figure 54**

1. Step 5:saving calibration data message
2. Confirm icon

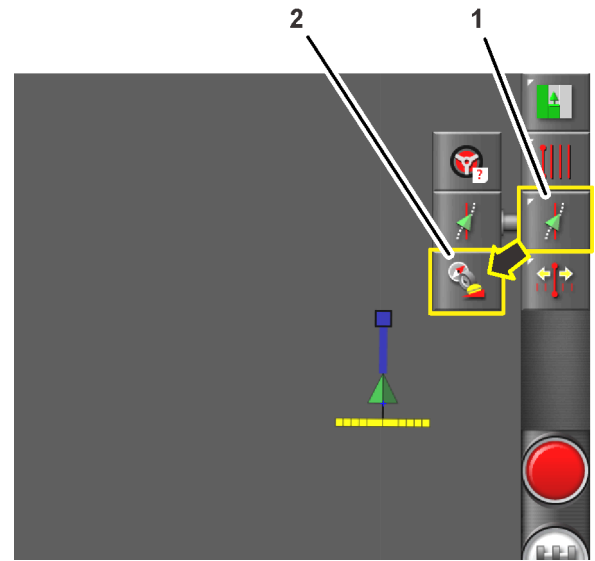
10. At step 6, press the conform icon.

## Calibrating the Mounting Bias for Auto Steer

Use this procedure to calibrate the receiver position on your machine. Calibrate the satellite receiver mounting bias when it is first installed or if the satellite receiver is replaced.

**Note:** For this calibration, you need a flat open area to drive a straight line for 76 m (250 ft) or more.

1. Press the STEERING OPTIONS icon.  
The steering options menu displays.

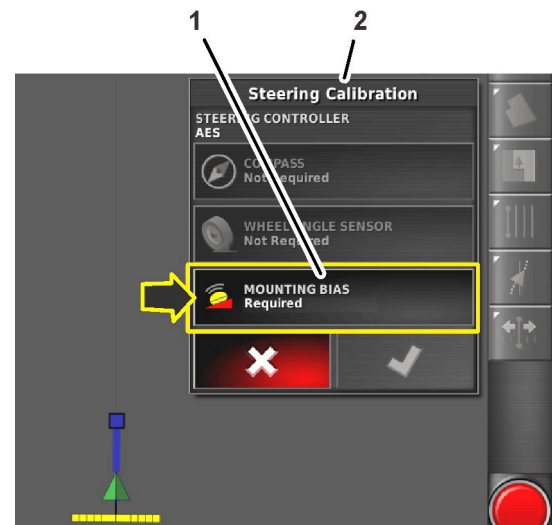


**Figure 55**

1. STEERING OPTIONS icon
2. AUTO STEER CALIBRATION icon

2. Press the STEERING CALIBRATION icon.  
The steering calibration menu displays.
3. Press the MOUNTING BIAS icon.  
The mounting bias calibration wizard displays.

**Note:** If the Mounting Bias icon indicates NOT REQUIRED, you do not need calibrate the mounting bias setting.



**Figure 56**

1. MOUNTING BIAS icon
2. Steering calibration menu

4. Drive the machine to the end of the open area, align it straight, and press the POSITION A icon.

**Note:** The point A symbol displays on the control console.



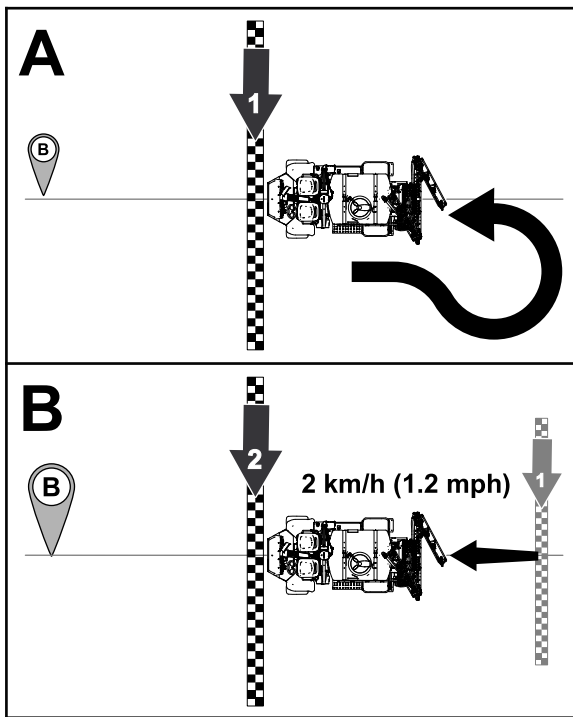



Figure 59

g314845

1. Engage the throttle lock of the machine
2. Press the Autosteer icon

7. Drive the machine toward point B and press the AUTO STEER icon .

**Important:** Allow the auto steer function to steer the machine.

8. Before reaching point B, set the ground speed for machine to 2 km/h (1.2 mph), and engage the throttle lock of the machine.

**Note:** Autosteer steers the machine between points B and A.

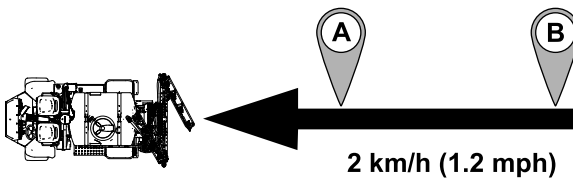


Figure 60

g314844

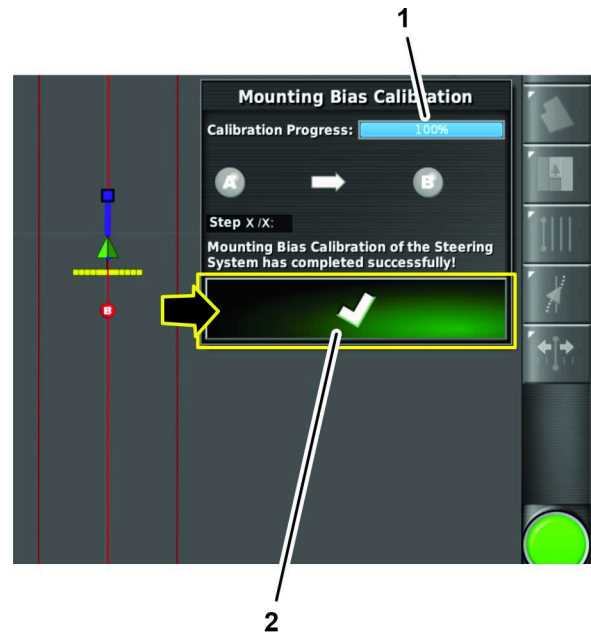


Figure 61

g314858

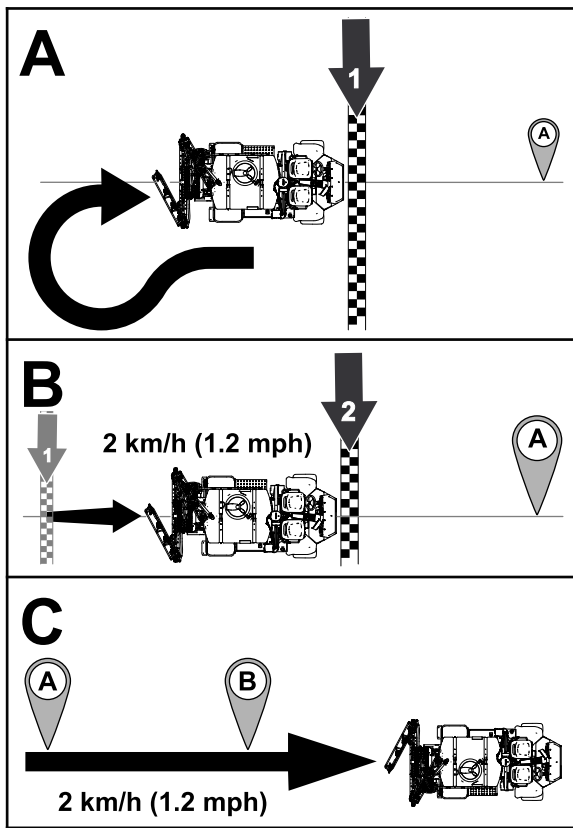
1. Mounting bias calibration progress (100%—complete)
2. Confirm icon

- Dialog boxes with additional steps to perform a point A to point B mounting bias calibration pass.

**Note:** If the system does not indicate 100% calibration progress after performing the point A to point B mounting bias calibration pass, contact the Toro technical assistance center.

9. Stop the machine.
10. The command console displays the following:
  - The dialog box indicating 100% calibration progress, press the confirm icon.





g314843

**Figure 62**

1. Press the Autosteer icon
2. Engage the throttle lock of the machine



# Using the Nudging Menu

## Nudging the Guideline Position

The nudge icon creates a new guideline identical to the created guideline in a new location.

Press the Nudged Guideline icon and Nudge Options icon for nudge options.

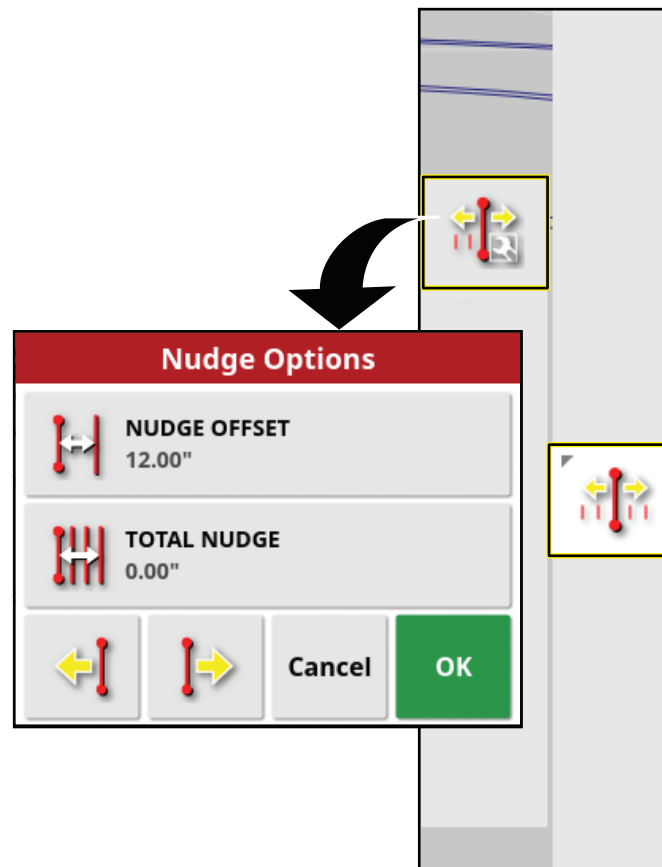


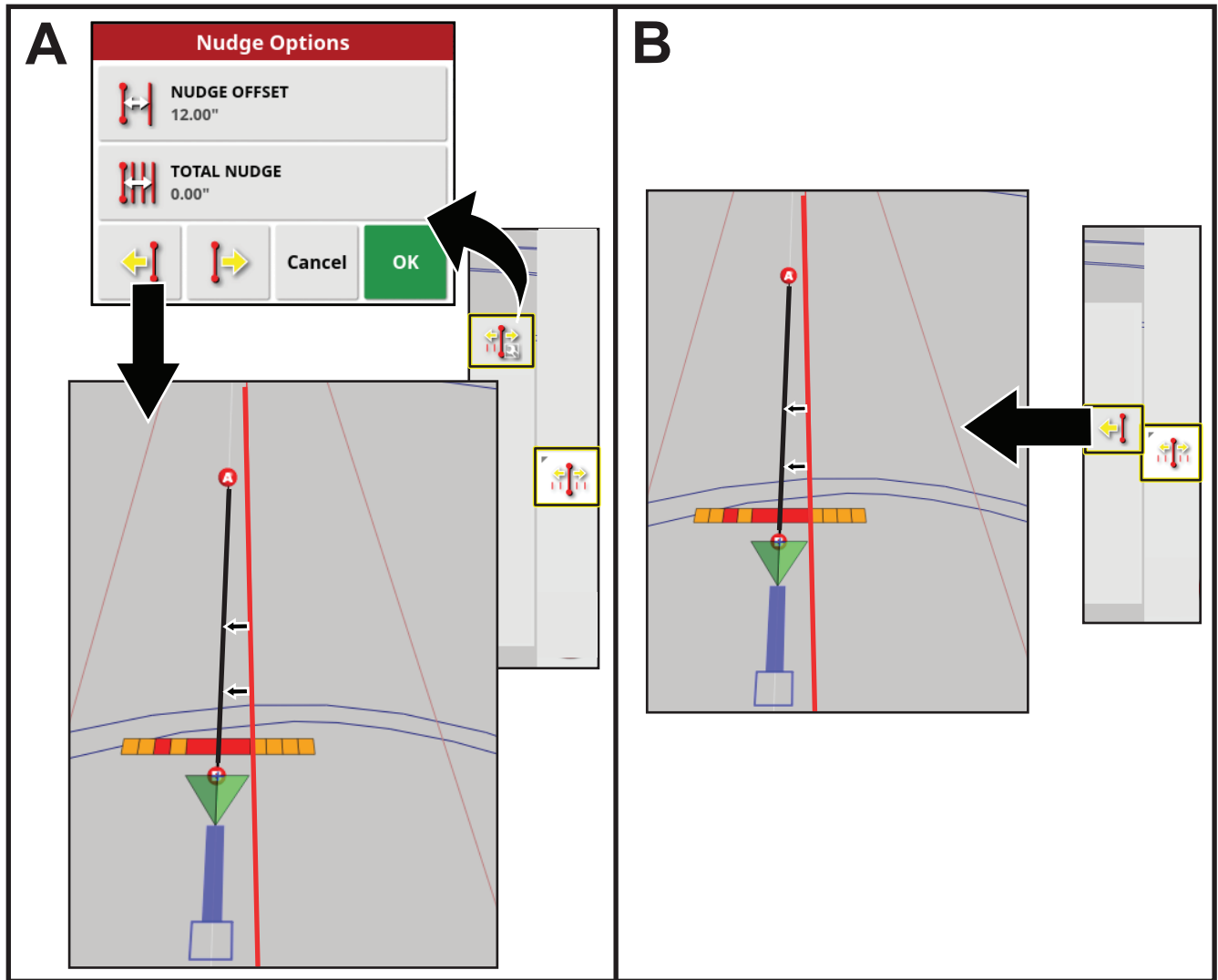
Figure 63

g467816

Use the nudge offset option to set how far the line will move.

Total nudge option displays the total distance nudged. Use the total nudge option to set a total nudge offset or to reset the nudge distance to 0.

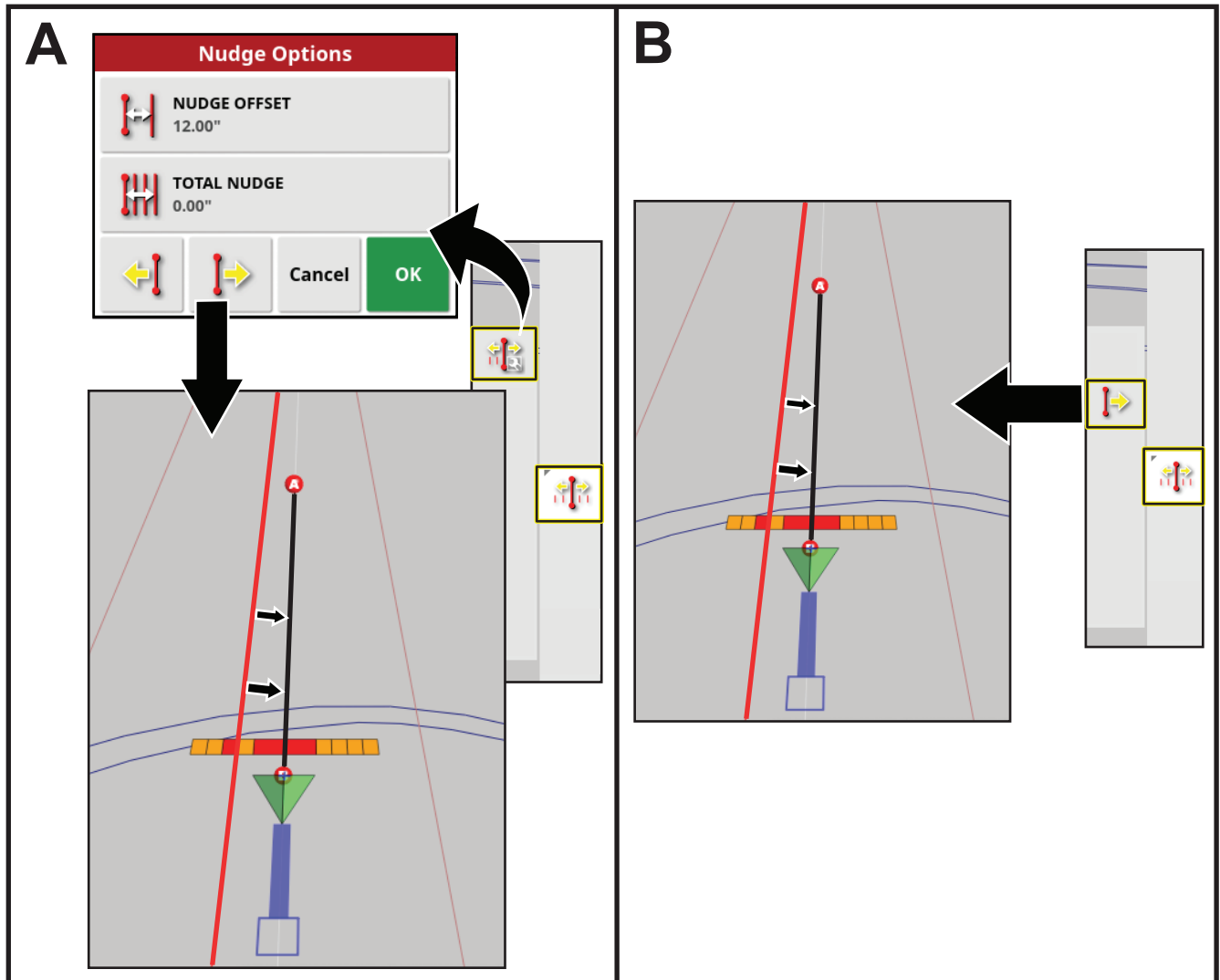
## Nudging the Guideline to the Left



g467819

Figure 64

## Nudging the Guideline to the Right



g467822

Figure 65

## Setting a Nudged Line to the Vehicle Position

Drive to where you want the new line to be and press the nudge line to vehicle icon

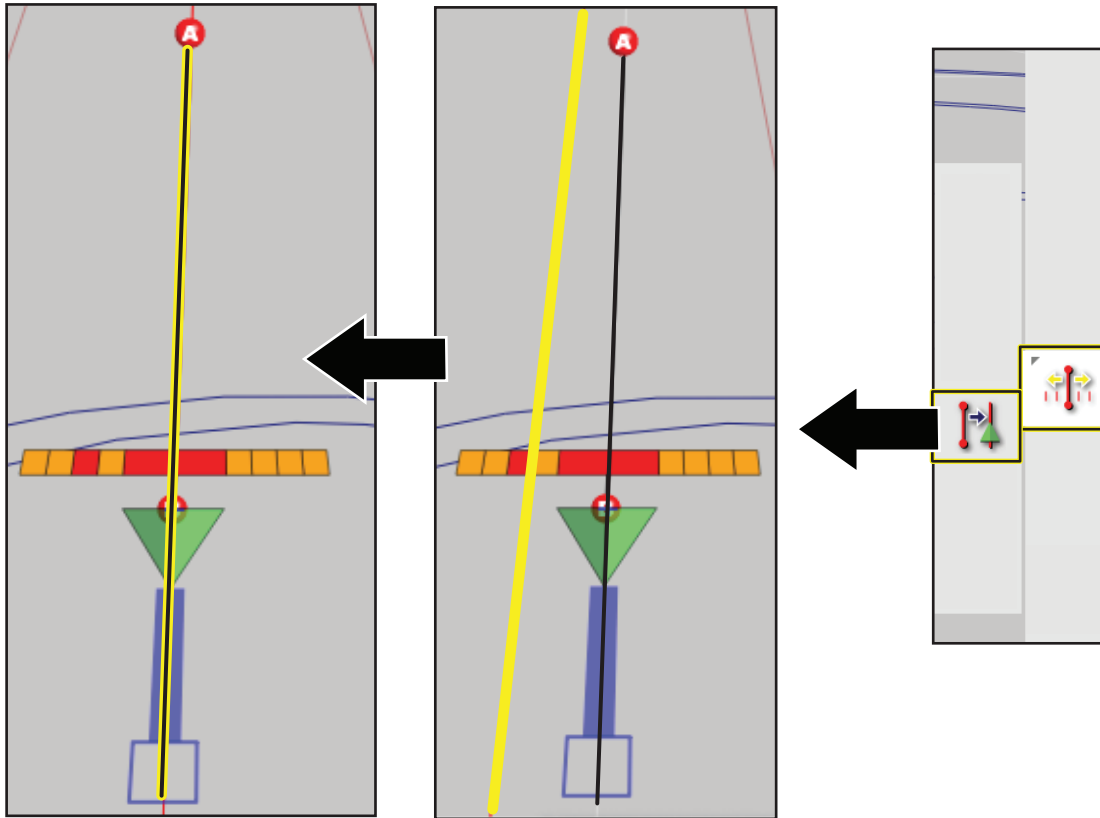


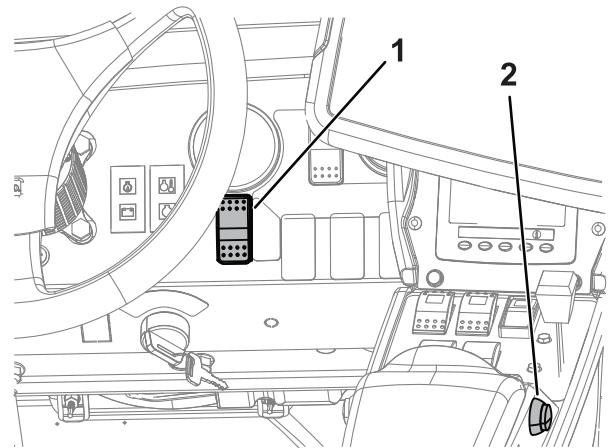
Figure 66

g467813

## Driving the Machine with Autosteer

### Using Autosteer to Drive the Machine


1. Select a guideline.
2. Set the enable/transport switch of the machine to the SPRAY position.



g299830

Figure 67

1. Autosteer enable(spray)/transport switch
  2. Autosteer engage/disengage switch
3. Confirm that all steering status items, except for the speed status, are OK (colored green); refer to [Using the Status Screen \(page 12\)](#).

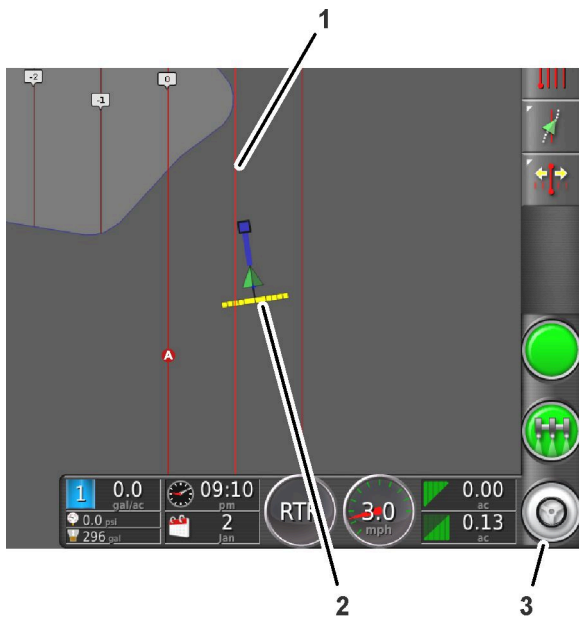
4. Zoom and pan the control console until the machine icon is sized and centered in the screen.
5. Drive the machine to the desired starting point of the active boundary that you intend to spray.
6. Confirm that the Autosteer icon in the lower right corner of the control console is colored white (standby) .

**Note:** If the steering icon is red, correct the condition not met from the status screen.

7. Press the Autosteer icon in the lower, right corner of the control console or press the engage/disengage switch of the machine.

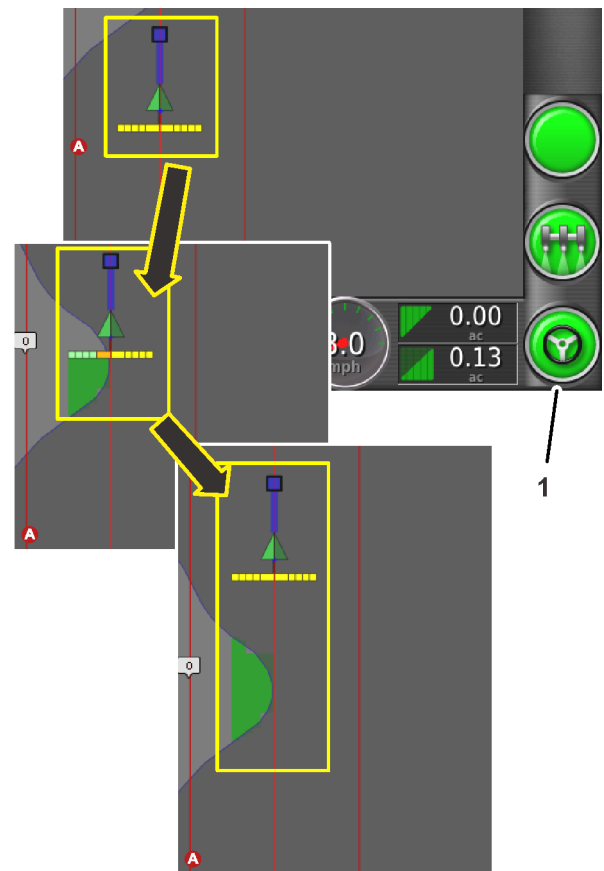
The Autosteer icon turns green and the machine steers toward the nearest guideline.

**Important:** The system is tuned to provide smooth engagement and transitions while operating; if you believe your system engages or transitions too abruptly, stop using the auto guidance function and contact Toro GeoLink Support at 1-844-GEOLINK (1-844-436-5465), or [GeoLink@toro.com](mailto:GeoLink@toro.com) for customer service..



**Figure 68**

1. Guideline
2. Machine icon
3. Autosteer icon—white (standby)



**Figure 69**

1. Autosteer icon—green (engaged)

8. When the machine drives outside the boundary, disengage the auto guidance function by performing 1 of the following actions:
  - Select the Autosteer icon at the lower right corner of the control console.
  - Rotate the steering wheel left or right.
  - Press the Autosteer engage/disengage switch on the machine.
  - Stop the machine.
9. Align the machine for the next spraying pass with the next guideline displayed in the control console.

**Notes:**

**Notes:**



**Count on it.**