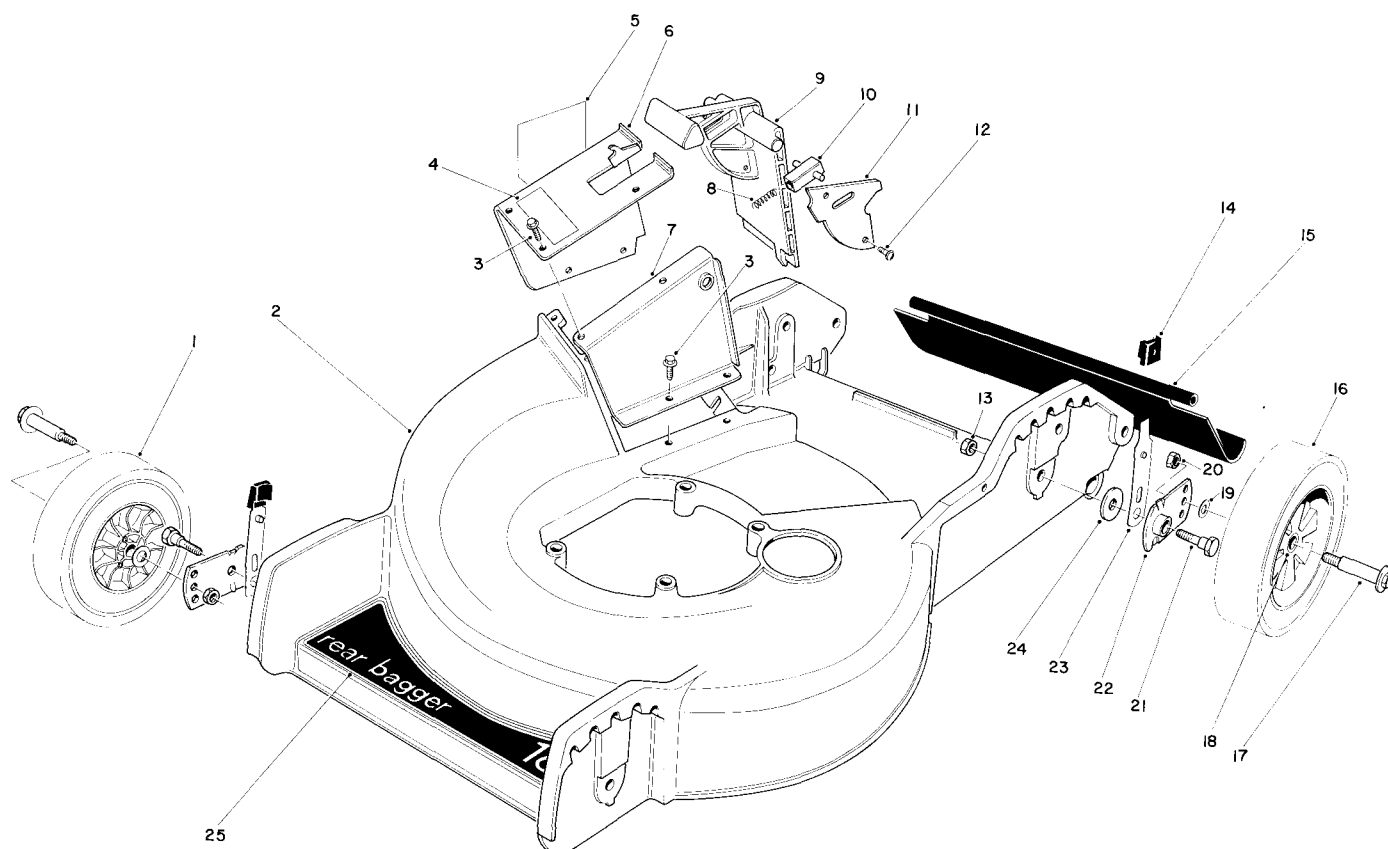




**MODEL NO. 20560-3000001 & UP**

## PARTS CATALOG

## 18" H.P. REAR BAGGER



## HOUSING ASSEMBLY

Ref. No.	Part No.	Description	No. Used
1	27-6210	Wheel & Tire Assembly (Incl. Ref. #18)	2
2	11-4059	Housing — 18"	1
3	12-3270	Screw — Thread Forming	7
4	47-6660	Decal — Door	1
5	39-5770	Decal — Danger	1
6	11-2849	Tunnel — Outer (Incl. Ref. # 4 & 5)	1
7	33-0430	Tunnel — Inner	1
8	33-0450	Spring — Latch	1
9	33-0410	Door — Mulching	1
10	47-5550	Latch — Door	1
11	33-0440	Cover — Door	1
12	32144-32	Screw — Thread Forming	2

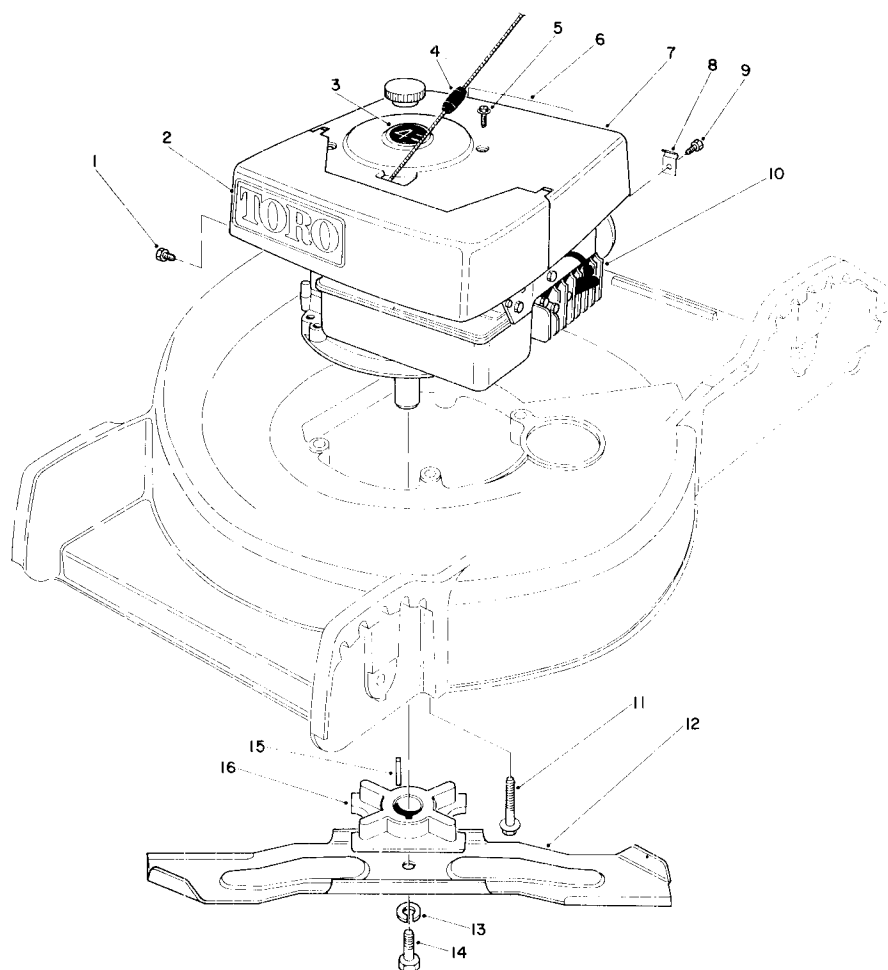
Ref. No.	Part No.	Description	No. Used
13	3296-29	Locknut	4
14	25-7740	Knob — Arm	4
15	33-2380	Rear Safety Shield	1
16	27-6200	Wheel & Tire Assembly (Incl. Ref. #18)	2
17	27-6230	Wheel Bolt	4
18	27-6250	Bushing	8
19	40-1940	Washer — Wheel Bolt	4
20	32146-6	Locknut	4
21	28-8880	Pivot Screw	4
21	33-0400	Pivot Arm Assembly	4
23	25-8000	Spring Arm Assembly	4
24	33-0390	Pivot Washer	4
25	46-7920	Decal — Deck	1

COPYRIGHT © ALL RIGHTS RESERVED

**The Toro Company — 1983**

MINNEAPOLIS, MN 55420 — U.S.A.

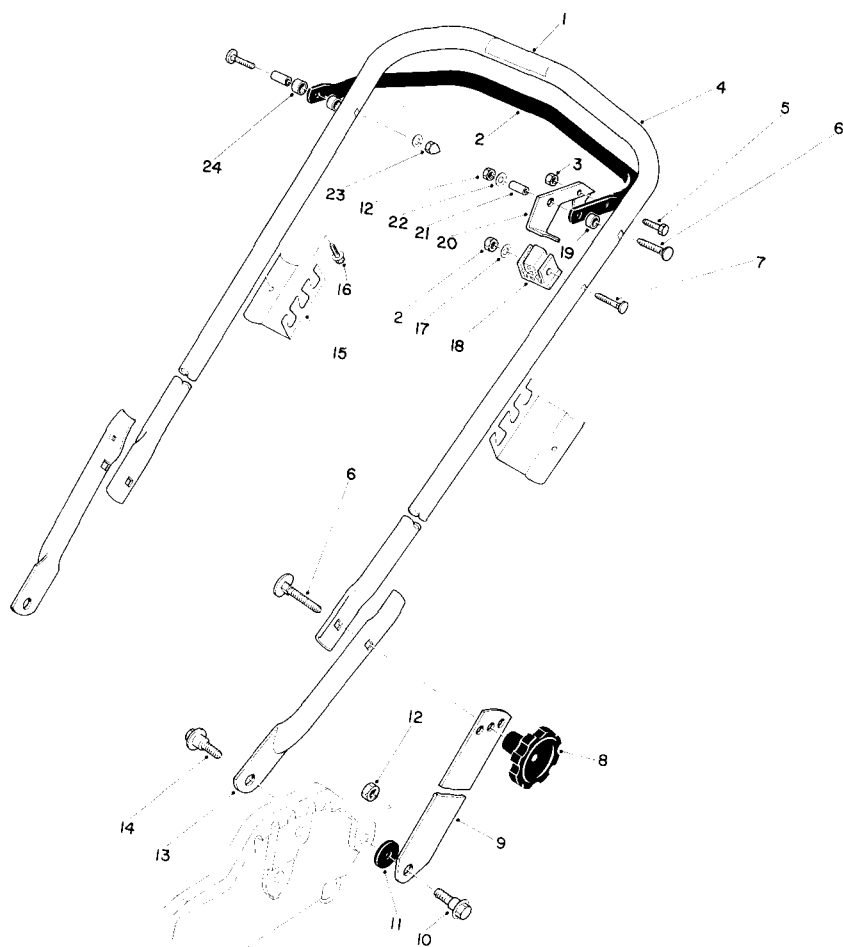
**PRICE \$1.00**



## ENGINE ASSEMBLY

Ref. No.	Part No.	Description	No. Used	Ref. No.	Part No.	Description	No. Used
1	2210-250	Screw, Hex Head	1	9	2210-125	Screw — Clamp	2
2	44-0510	Decal — Toro	1	10	221-738	Engine	1
3	38-0790	Decal — Shroud	1	11	11-0581	Screw — Engine	3
4	2210-252	Rope Stop	1	12	33-0490	Blade — 18"	1
5	32144-60	Screw — Thread Forming	4	13	3253-22	Lockwasher	1
6	46-8300	Decal — Danger	1	14	26-0671	Blade Screw	1
7	46-3670	Shroud — Assembly	1	15	27-8590	Key — Square	1
8	2412-38	Clamp — Casing	2	16	46-4870	Retainer Blade	1
				*	11-4519	Loose Parts	1

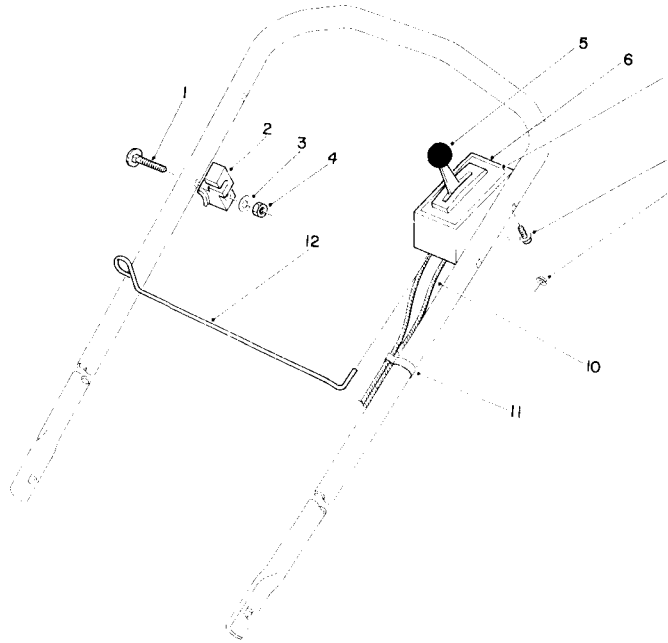
\*Not Illustrated



## HANDLE ASSEMBLY

Ref. No.	Part No.	Description	No. Used
1	47-4580	Decal — Instructions	1
2	46-9900	Bar — Control	1
3	3296-42	Locknut	2
4	11-5439	Upper Handle (Incl. Ref. #1)	1
5	321-5	Capscrew — Hex Head	1
6	17-9421	Handle Screw	4
7	46-6432	Handle Screw	1
8	19-4050	Knob — Handle	2
9	43-1370	Latch — Handle	2
10	27-7211	Screw — Shoulder	2
11	3-3287	Spacer — Handle Latch	2
12	3296-47	Locknut	3

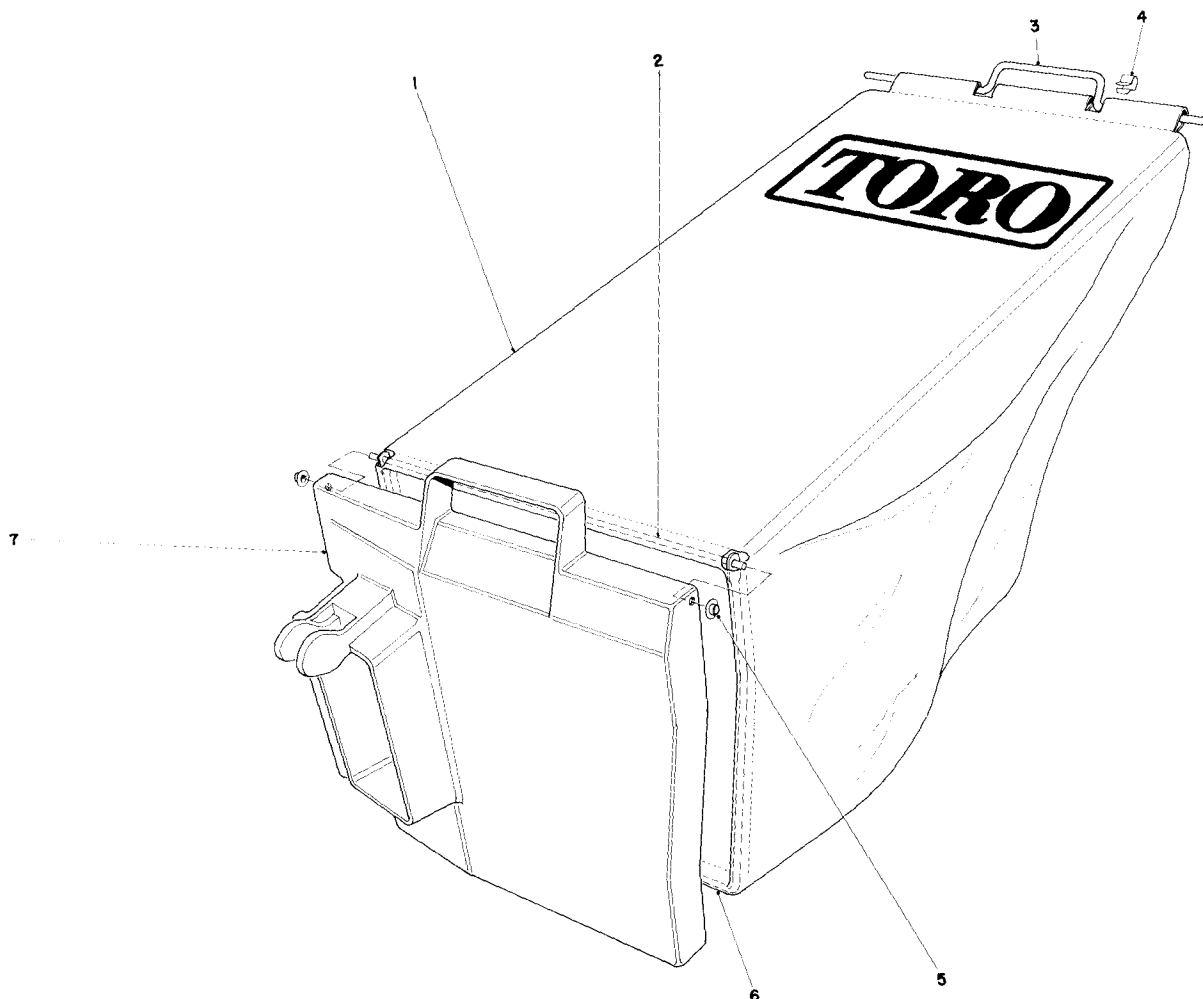
Ref. No.	Part No.	Description	No. Used
13	33-0520	Lower Handle	2
14	5-2490	Screw — Shoulder	2
15	46-9920	Support — Bag	2
16	32104-76	Screw — Tapping	2
17	3256-22	Washer	1
18	46-6980	Support — Cable	1
19	46-6240	Nylon Spacer	1
20	46-7950	Lever — Control	1
21	46-5580	Bushing — Powdered Metal	2
22	3256-23	Washer	2
23	32111-8	Nut — Acorn	1
24	256-276	Bushing — Nylon	2



## THROTTLE CONTROL

Ref. No.	Part No.	Description	No. Used
1	46-6430	Handle Screw	1
2	46-7960	Catch — Rod	1
3	3256-22	Washer	1
4	3296-42	Locknut	1
5	46-6010	Control — Throttle (Bend Type 1) (Sheath Lg. 48 inch, 121.9 cm) (Wire Lg. 1 $\frac{7}{8}$ inch, 4.8 cm)	1

Ref. No.	Part No.	Description	No. Used
6	11-5219	Cover — Control (Incl. Ref. #7)	1
7	47-5240	Decal — Control Cover	1
8	32104-76	Screw — Tapping	1
9	3290-337	Push Nut	1
10	46-8012	Cable — Brake	1
11	218-465	Clip	2
12	46-9910	Rod — Rope	1

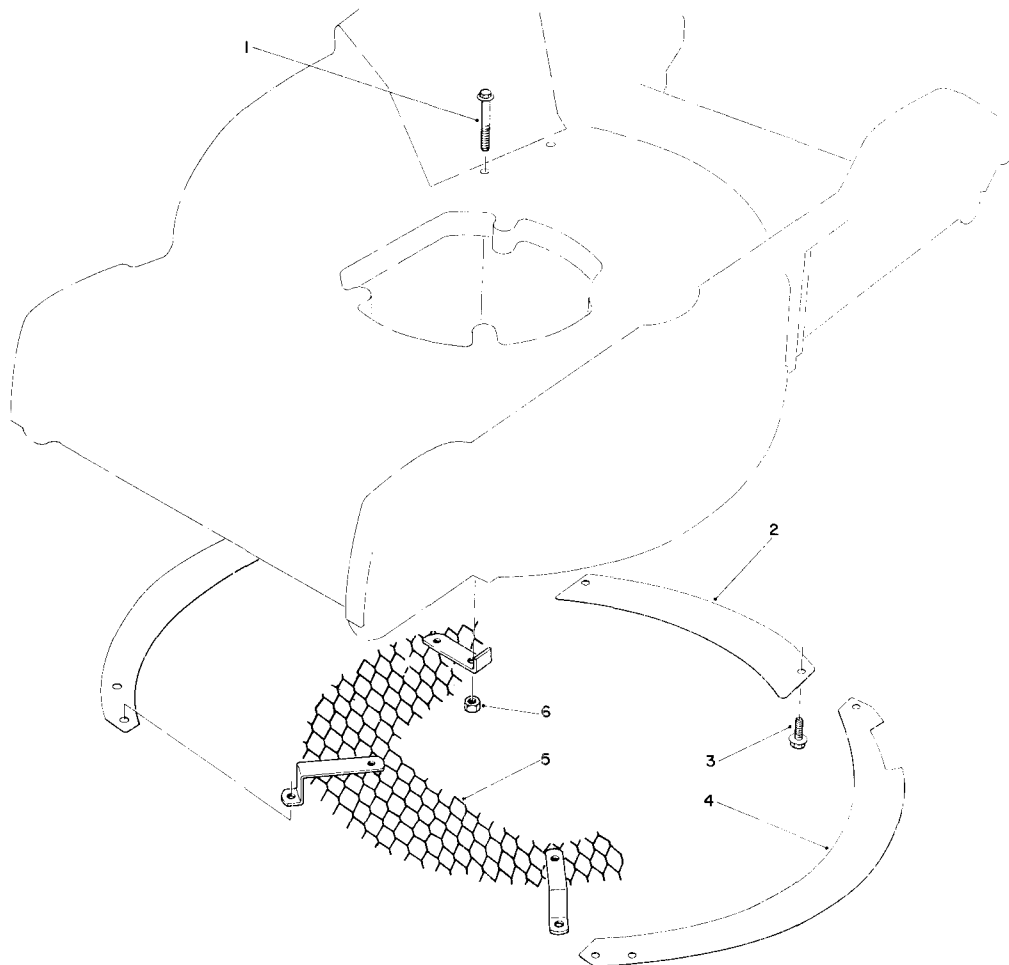


## GRASS BAG ASSEMBLY NO. 11-4949

Ref. No.	Part No.	Description	No. Used
1	8-0659	Bag	1
2	33-2970	Hinge	1
3	47-4560	Handle Bag	1
4	3290-421	Clip Bag Handle	2
5	3290-422	Push Nut Washer Cap	2

Ref. No.	Part No.	Description	No. Used
6	33-2240	Frame Bag	1
7	33-2980	Door — Bag	1
*	11-4949	Grass Bag Assembly (Incl. Ref. #1-7)	1

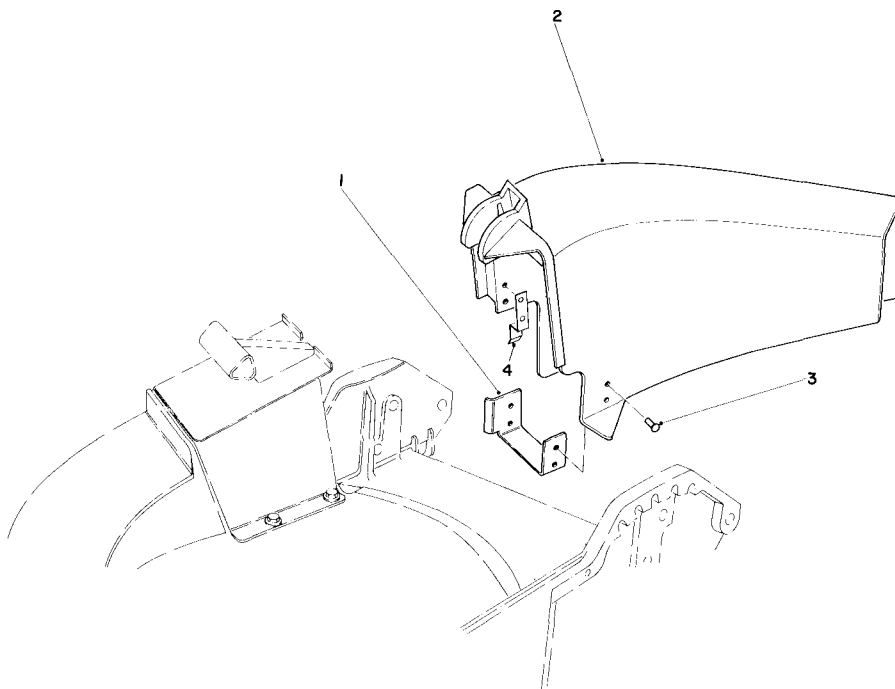
\*Not Illustrated



## LEAF SHREDDER KIT NO. 59101 (Optional)

Ref. No.	Part No.	Description	No. Used
1	37-7470	Screw	1
2	37-7410	Rear Baffle	1
3	12-3270	Screw	4

Ref. No.	Part No.	Description	No. Used
4	37-7400	Outer Baffle	2
5	37-7450	Screen	1
6	32146-17	Locknut	1

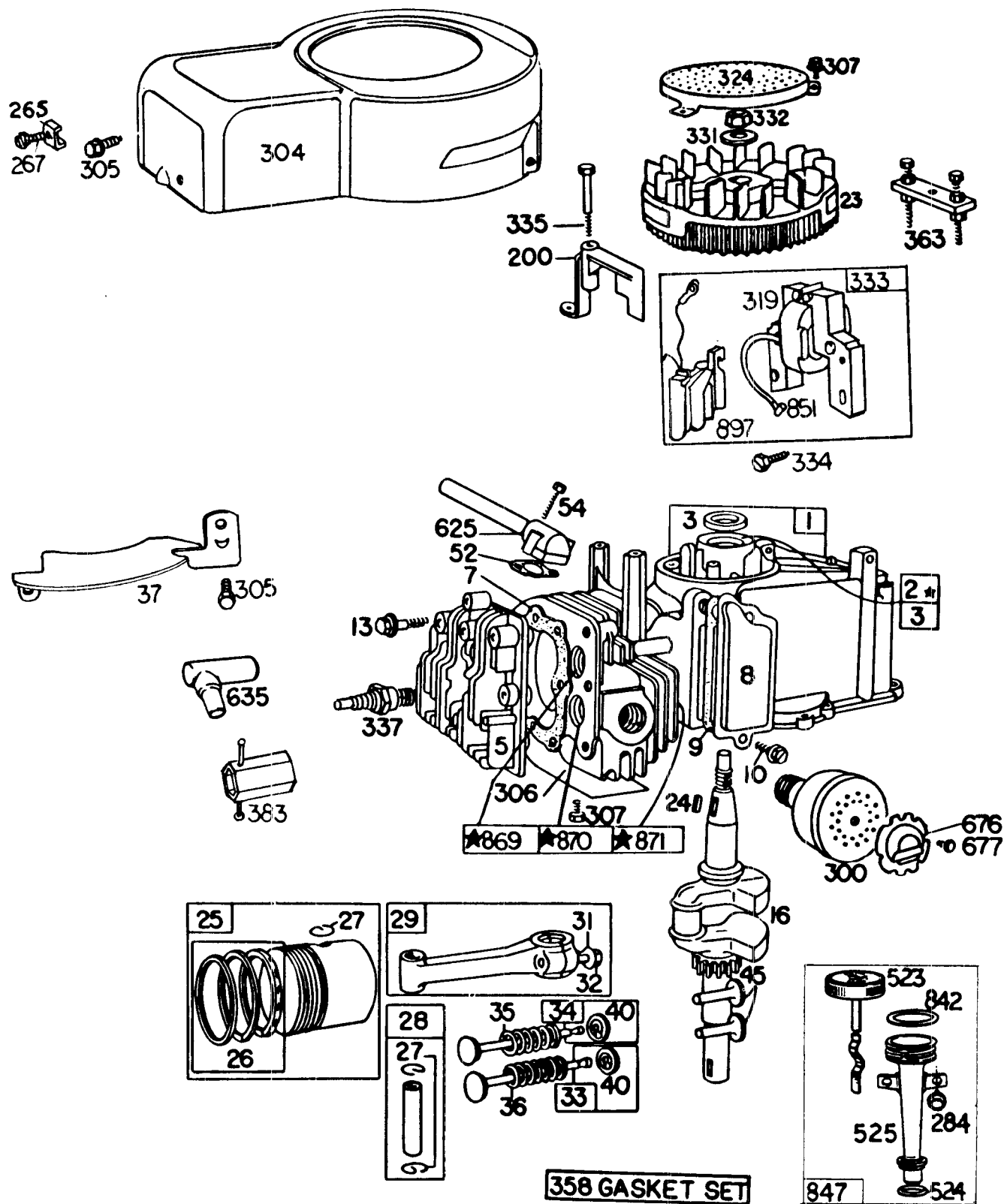


## SIDE DISCHARGE KIT NO. 59107 (Optional)

Ref. No.	Part No.	Description	No. Used
1	44-2620	Chute Bracket	1
2	44-2610	Chute Discharge	1

Ref. No.	Part No.	Description	No. Used
	3295-29	Rivet	6
	46-6400	Tab Chute	1

# ENGINE BRIGGS & STRATTON MODEL NO. 92908-3196-01



★ SPECIAL TOOLS REQUIRED FOR INSTALLING  
SEE REPAIR INSTRUCTION MANUAL

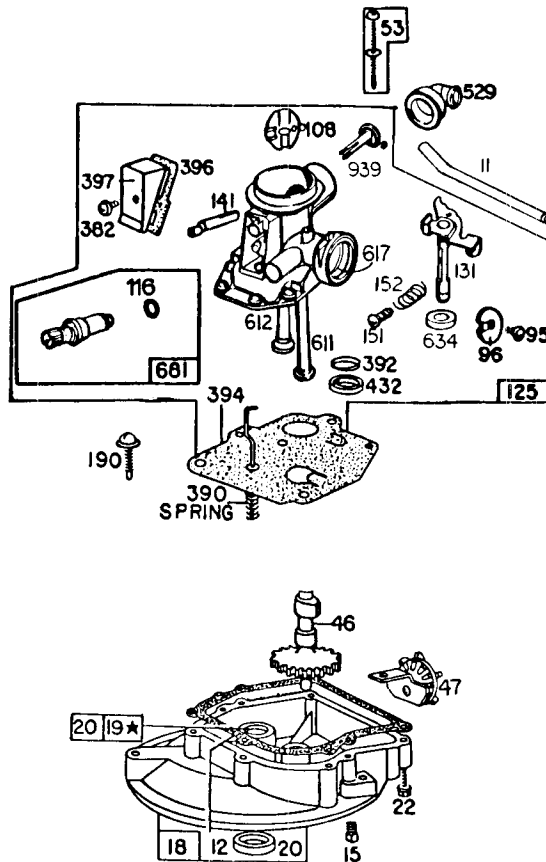


# ENGINE BRIGGS & STRATTON MODEL NO. 92908-3196-01

Ref. No.	Part No.	Description	No. Used
1	395373	Cylinder Assembly	
2	293708	Bushing — Cylinder Note: Requires special tools for installation.	
3	299819	Seal — Oil	
5	211479	Head — Cylinder	
7	*270341	Gasket — Cylinder Head	
8	298383	Breather — Valve Chamber	
9	*270239	Gasket — Valve Cover	
10	93394	Screw — Breather	
16	261293	Crankshaft	
13	93111	Screw — Cylinder Head	
23	394848	Flywheel — Magneto	
24	222698	Key — Flywheel	
25	298904	Piston — Assy. — Standard	
	298905	Piston Assy. — .010" O.S.	
	298906	Piston Assy. — .020" O.S.	
	298907	Piston Assy. — .030" O.S.	
		<b>PISTON</b>	
	<b>Ring Sets:</b>	Note: For Chrome Piston Ring Set — Standard Size — Order Part No. 299742.	
26	298982	Ring Set — Standard Piston	
	298983	Ring Set—.010" O.S. Piston	
	298984	Ring Set — .020" O.S. Piston	
	298985	Ring Set — .030" O.S. Piston	
27	26026	Lock — Piston Pin	
28	298909	Pin Assembly — Piston — Standard	
	298908	Pin Assembly — Piston — .005" O.S.	
29	294201	Rod Assy. — Connecting Note: For Connecting Rod with .020" undersize Crankpin Bore — order No. 296079.	
31	222282	Washer (One for each Screw)	
32	92296	Screw — Connecting Rod	
33	296676	Valve — Exhaust	
34	296677	Valve — Intake	
35	260552	Spring — Intake Valve	
36	26478	Spring — Exhaust Valve	
37	223150	Guard — Flywheel	
40	93312	Retainer — Valve Spring	
45	230173	Tappet — Valve	
52	*270345	Gasket — Intake Elbow	

Ref. No.	Part No.	Description	No. Used
54	93485	Screw — Intake Elbow Mtg.	
200	68388	Blade — Governor	
265	22372	Clamp — Casing	
267	93469	Screw — Clamp Mtg.	
284	93984	Screw — Clamp Mtg.	
300	394569	Muffler — Exhaust	
304	223132	Housing — Blower	
305	93559	Screw — Blower Housing Mounting	
306	221805	Shield — Cylinder	
307	93490	Screw — Cylinder Shield and Rotating Screen Mounting	
319	395488	Armature Assy. (Less Trigger Coil)	
324	223006	Screen — Rotating	
331	223047	Washer — Flywheel	
332	92284	Nut — Flywheel	
333	395489	Armature — Magneto	
334	93381	Screw — Armature Mounting	
335	93435	Screw — Armature and Governor Blade Mounting	
337	298809	Plug — Spark 1½" High — 37-42 M.M.	
358	298989	Gasket Set	
363	19069	Puller — Flywheel (Optional Accessory)	
383	89838	Wrench — Spark Plug	
523	391838	Cap with Dipstick — Oil Filler	
524	271485	Seal — Filler Tube	
525	280382	Tube — Oil Filler	
625	298775	Tube — Fuel Intake	
635	66538	Elbow — Spark Plug	
676	393756	Deflector — Muffler	
677	93705	Screw — Muffler Deflector	
842	270920	Seal — Oil Filler Cap	
847	395869	Tube Assy. — Oil Fill	
851	221798	Terminal — Ignition Cable	
869	210879	Seat — Intake Valve (Standard)	
870	211291	Seat — Exhaust Valve (Standard) Note: For Installation Repair Manual.	
871	63709	Guide — Exhaust Valve	
897	394970	Trigger Coil	

\*Included in Gasket Set — Part No. 298989

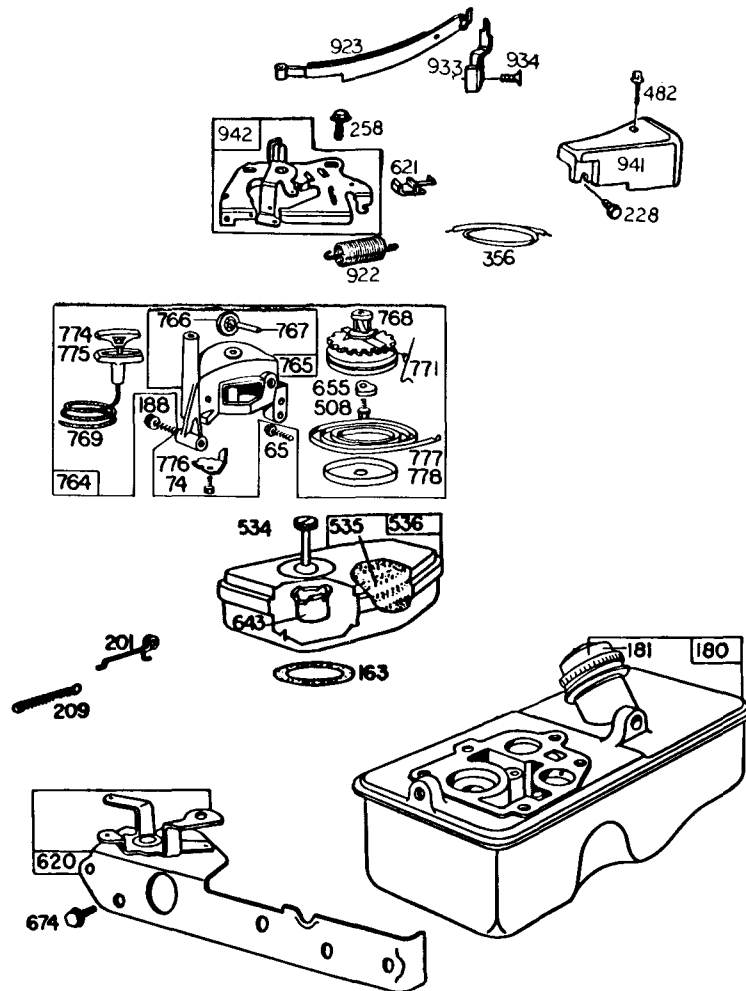


★ Special tools required to install.  
See repair instruction manual

## ENGINE BRIGGS & STRATTON MODEL NO. 92908-3196-01 (Continued)

Ref. No.	Part No.	Description	No. Used	Ref. No.	Part No.	Description	No. Used
11	231272	Tube — Breather		125	395699	Carburetor Assembly	
12	*270833	Gasket — Crankcase — .015" thick (Standard)		131	299977	Shaft and Lever — Throttle	
	*270895	Gasket — Crankcase — .005" thick		141	68908	Shaft — Choke	
	*270896	Gasket — Crankcase — .009" thick		151	93524	Screw — Rd. Hd.	
15	91084	Plug — Oil Drain		152	260746	Spring — Throttle Adj.	
18	395384	Sump — Oil		190	93440	Screw — Fuel Tank Mtg.	
19	293709	Bushing — Oil Sump		382	93545	Screw — Choke Link Cover	
		Note: Requires Special Tools for Installation		390	261249	Spring — Diaphragm	
20	391483	Seal — Oil		392	260455	Spring — Fuel Pump Diaphragm	
22	93032	Screw — Sump Mtg.		394	391643	Diaphragm — Carburetor	
46	394800	Gear — Cam		396	270571	Gasket — Choke Link Cover	
47	294652	Oil Slinger Gear and Bracket		397	211678	Cover — Choke Link	
53	391982	Screw — Carb. Mtg.		432	221377	Cap — Spring	
95	93499	Screw — Throttle Valve Mtg.		529	280368	Grommet — Breather	
96	211237	Valve — Throttle		611	297219	Pipe — Fuel (long)	
108	280370	Valve — Choke		612	296811	Pipe — Fuel (short)	
116	280203	O-Ring		617	270344	Seal — Fuel Intake Tube	
				634	270167	Washer — Throttle Shaft (Felt)	
				681	395508	Needle Valve Kit	
				939	395665	Choke Shaft Assy.	

\*Included in Gasket Set — Part No. 298989.



## ENGINE BRIGGS & STRATTON MODEL NO. 92908-3196-01 (Continued)

Ref. No.	Part No.	Description	No. Used
65	93587	Screw — Vertical Pull Starter Mounting	
74	93490	Screw	
163	271139	Gasket — Air Cleaner Mounting	
180	391694	Tank Assembly — Fuel	
181	298425	Cap — Fuel Tank	
188	93585	Screw — Fuel Tank and Starter Mounting	
201	261027	Link — Governor	
209	261034	Spring — Governor	
228	93758	Screw — Hex Head	
258	94018	Screw — Hex Head	
356	298479	Wire — Ground (cut to 12¼")	
482	93621	Screw	
508	93158	Screw	
534	93374	Screw — Air Cleaner	
535	270579	Element — Air Cleaner	
536	390055	Cleaner Assembly — Air	
620	299974	Plate — Carburetor Control	
621	297472	Switch — Stop	
643	280374	Cup — Air Cleaner	
655	222057	Anchor — Spring	
674	93559	Screw — Tank to Bracket	

Ref. No.	Part No.	Description	No. Used
764	396340	Starter Assembly — Vertical Pull	
765	395914	Housing — Vertical Pull Starter	
766	280022	Pulley — Rope (Small)	
767	231048	Pin — Small Rope Pulley (7/16" Long)	
768	396363	Pulley and Gear Assembly — Starter	
769	66684	Rope — Vertical Pull Starter (95") (cut to suit)	
771	299961	Clip — Vertical Pull Starter	
774	280121	Insert — Starter Handle	
775	280036	Grip — Starter Rope	
776	222049	Guide — Rope	
777	390066	Spring — Vertical Pull Starter	
778	280021	Cover — Vertical Pull Starter Pulley	
922	261647	Spring — Brake	
923	394867	Band Brake Assy.	
933	223187	Pivot — Band Brake	
934	94037	Screw — Brake Pivot	
941	280395	Cover — Linkage	
942	395393	Bracket and Lever Assy.	

## PRODUCT CHANGES

In an effort to make improvements available to TORO owners as quickly as possible, minor changes are incorporated into Toro's products from time to time that do not become immediately shown in the Parts Catalog. If such a change apparently has been made in your unit, which is not reflected in your manual, see your TORO Distributor or his Authorized TORO Service Dealer for information and part numbers.

## IDENTIFICATION AND ORDERING

### MODEL AND SERIAL NUMBERS

The Mower has two identification numbers: a model number and a serial number. The two numbers are stamped on a decal which is located on the mower housing between the rear wheels. In any correspondence concerning the mower, supply model and serial numbers to assure that correct information and replacement parts are obtained.

To order replacement parts from an Authorized TORO Service Dealer, supply the following information:

1. Model and serial numbers of the mower.
2. Part number, description, and quantity of part(s) desired.

**Note:** Do not order by reference number if a parts catalog is being used; use the PART NUMBER.

## The Toro Promise

### A ONE YEAR LIMITED WARRANTY

*The Toro Company promises to repair your TORO Product if defective in materials or workmanship. The following time periods from the date of purchase apply:*

Residential Product . . . . . 1 Year  
Residential Products Used Commercially . . . 45 Days

*The costs of parts and labor are included, but the customer pays the transportation costs. Just return any residential product to an Authorized TORO Service Dealer or TORO Distributor.*

Should you feel your TORO Product is defective and wish to rely on The Toro Promise, the following procedure is recommended:

1. Contact any Authorized TORO Service Dealer, TORO Master Service Dealer, or TORO Distributor (the Yellow Pages of your telephone directory is a good reference source).
2. He will either instruct you to return the product to him or recommend another Authorized TORO Service outlet which might be more convenient.
3. Bring the product along with your original sales slip, or other evidence of purchase date, to the service dealer.
4. The servicing dealer will inspect the unit, advise you whether the product is defective and, if so, make all repairs necessary to correct the defect without extra charge to you.

If for any reason you are dissatisfied with the dealer's analysis of the defect or the service performed, you may contact us.

Write:

TORO Consumer Service Department  
8111 Lyndale Avenue South  
Minneapolis, Minnesota 55420

The above remedy of product defects through repair by an Authorized TORO Service Dealer is the purchaser's sole remedy for any defect.

THERE IS NO OTHER EXPRESS WARRANTY. ALL IMPLIED WARRANTIES OF MERCHANTABILITY AND

FITNESS FOR USE ARE LIMITED TO THE DURATION OF THE EXPRESS WARRANTY.

Some states do not allow limitations on how long an implied warranty lasts, so the above limitation may not apply to you.

This warranty applies only to parts or components which are defective and does not cover repairs necessary due to normal wear, misuse, accidents, or lack of proper maintenance. Regular, routine maintenance of the unit to keep it in proper operating condition is the responsibility of the owner.

All warranty repairs reimbursable under The Toro Promise must be performed by an Authorized TORO Service Dealer using Toro approved replacement parts.

Repairs or attempted repairs by anyone other than an Authorized TORO Service Account are not reimbursable under The Toro Promise. In addition, these unauthorized repair attempts may result in additional malfunctions, the correction of which is not covered by warranty.

THE TORO COMPANY IS NOT LIABLE FOR INDIRECT, INCIDENTAL OR CONSEQUENTIAL DAMAGES IN CONNECTION WITH THE USE OF THE PRODUCT INCLUDING ANY COST OR EXPENSE OF PROVIDING SUBSTITUTE EQUIPMENT OR SERVICE DURING PERIODS OF MALFUNCTION OR NON-USE.

Some states do not allow the exclusion or limitation of incidental or consequential damages, so the above limitation or exclusion may not apply to you.

This warranty gives you specific legal rights, and you may also have other rights which vary from state to state.

## COUNTRIES OTHER THAN THE UNITED STATES OR CANADA

Customers who have purchased TORO products exported from the United States or Canada should contact their TORO Distributor (Dealer) to obtain guarantee policies for your country, province or state. If for any reason

you are dissatisfied with your Distributor's service or have difficulty obtaining guarantee information, contact the TORO importer. If all other remedies fail, you may contact us at The Toro Company.