



MODEL NO. 41030

SET-UP AND
PARTS LIST**ELECTRIC BOOM LIFT KIT**

Refer to the illustrated Parts List for the details of parts used in assembling the Electric Boom Lift Kit.

"Right" and "Left" as used in the following instructions, refer to the operator's right and left when seated in the normal operating position. Likewise, "Front" and "Rear" as seen from the operator's position.

■ If the Struts have been installed, (for use with a Manual Boom Frame) disassemble them and use the clevis pins and hair pin cotters to install the Electric Actuators as shown in FIG. 1.

■ Connect the Switches and Wires as shown in the diagram on page 2. Install the Switches in the holes in the Seat Support, using the nuts included with the Switches. Install the protective rubber Boots. Apply the "UP/DOWN" Decal between the Switches as shown in FIG. 2 or FIG. 3.

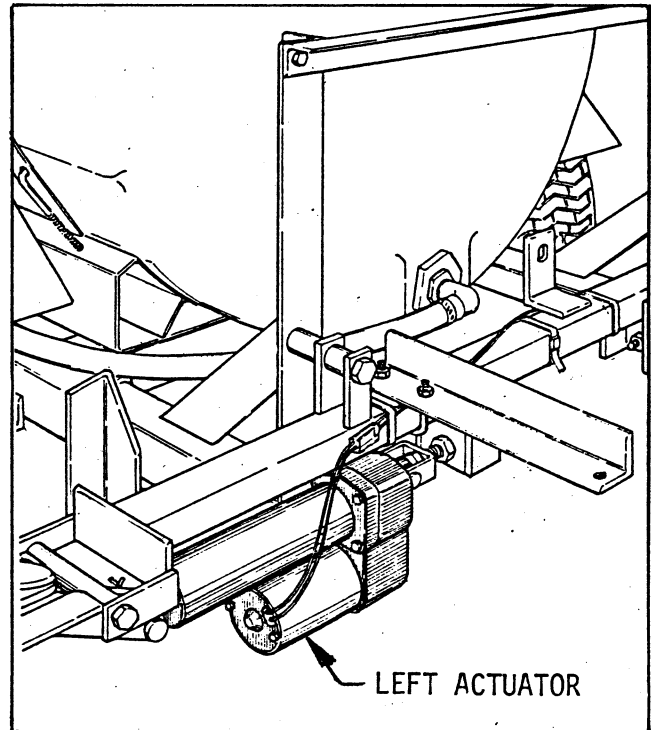


FIG. 1

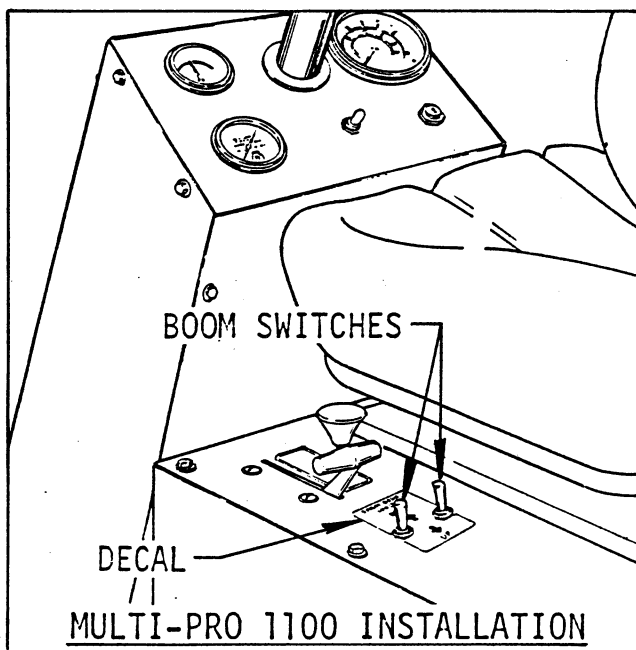


FIG. 2

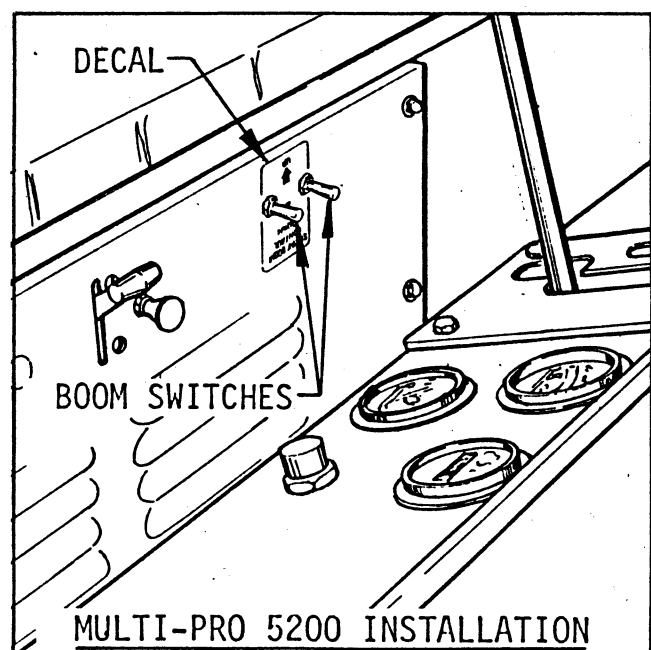
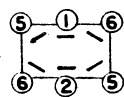
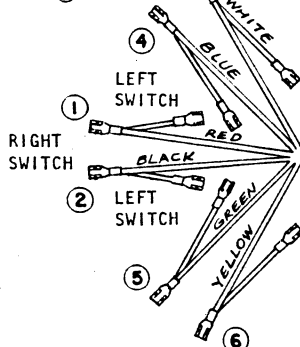
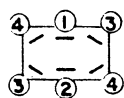


FIG. 3

RIGHT SWITCH
(Viewed from
bottom of switch)



LEFT SWITCH
(Viewed from
bottom of switch).

wiring diagram

Part No. 42203 WIRE HARNESS

NOTE: the Fuse Block and the Ground Terminal Block have eliminated the need for an "in-line" fuse. See instructions below.

TO YELLOW
WIRE IN
ACTUATOR
PLUG

RIGHT
ACTUATOR

TO RED WIRE
IN ACTUATOR
PLUG

TO RED WIRE
IN ACTUATOR
PLUG

LEFT
ACTUATOR

TO YELLOW
WIRE IN
ACTUATOR
PLUG

■ Run the Wire Harness along the left side of the Vehicle's Main Frame.

■ Pull the red and black wires (circled in the diagram above) from the split conduit.

■ Determine the point at which these wires are best positioned to be connected to the Fuse Block, inside the Seat Support.

■ Measure very carefully, being sure to allow plenty of wire for the connections, and cut off the excess wire.

■ Crimp the spade terminal to the black wire. Crimp the push-on terminal to the red wire.

■ Ground the spade terminal on the black wire to the Ground Terminal Block.

■ Connect the push-on terminal to the red wire to the male terminal on the red wire coming from the Fuse Block. See FIG. 4.

■ Make a trial connection by plugging single terminals into the Actuator plug, to check the up and down motion and the right and left control.

If all connections are correct, use the plastic Connector for final connection.

■ Apply silicone at joint and on the back side of plug where wires enter the plug.

■ Secure the Wire Harness with plastic cable ties, to the Boom and Vehicle Frame.

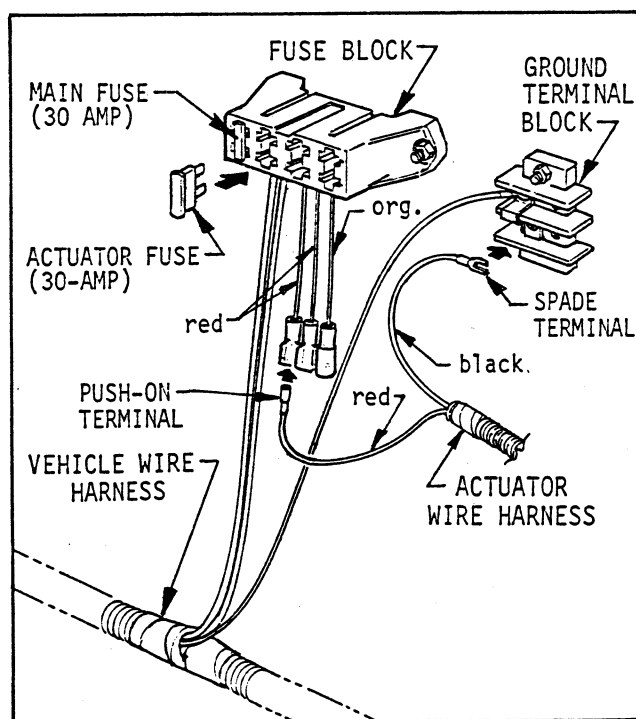
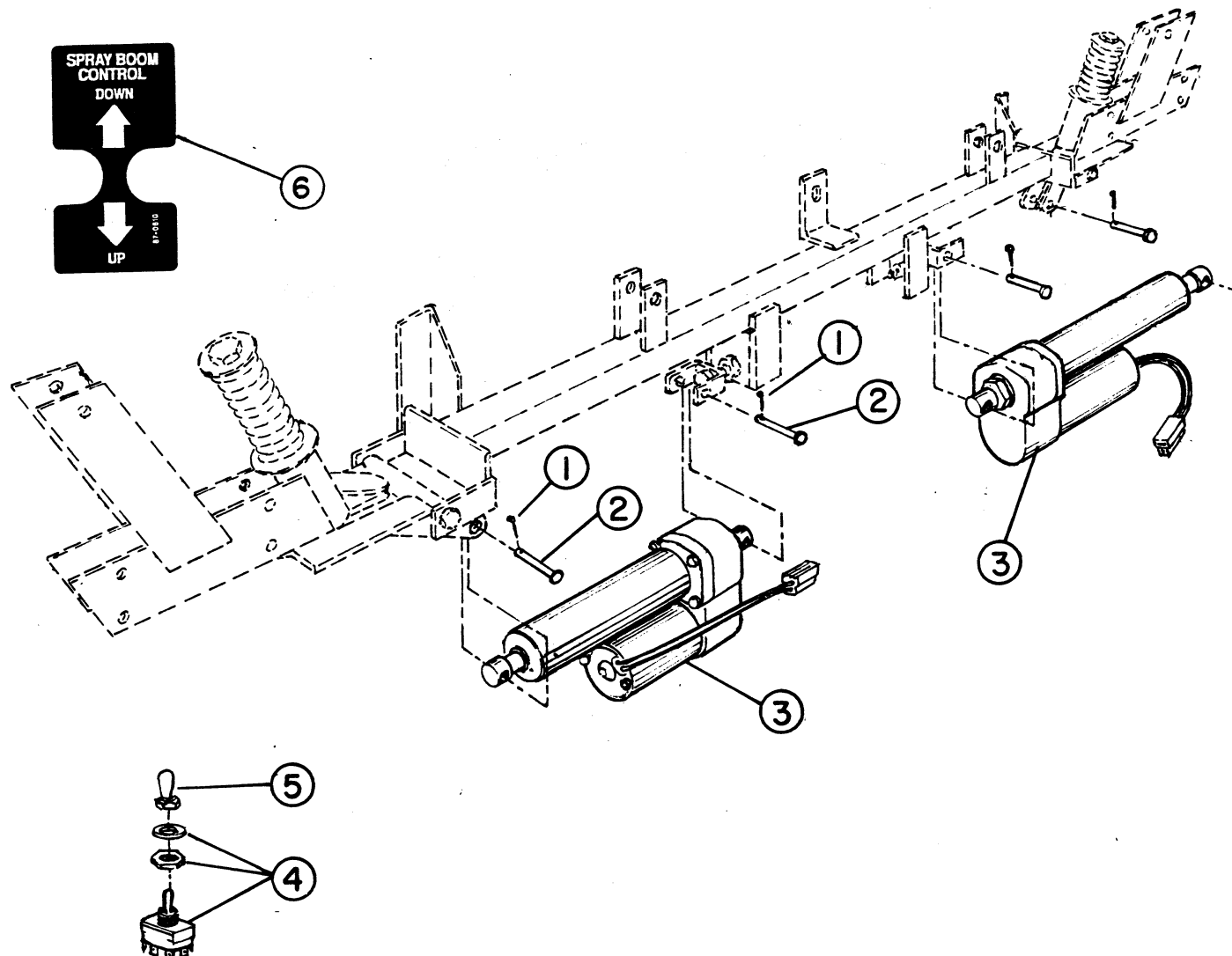


FIG. 4



CAUTION: Cover or otherwise protect the Electric Actuators when using a high pressure hose washer. Water entering the Actuator will cause **SERIOUS DAMAGE** and premature failure of the unit!

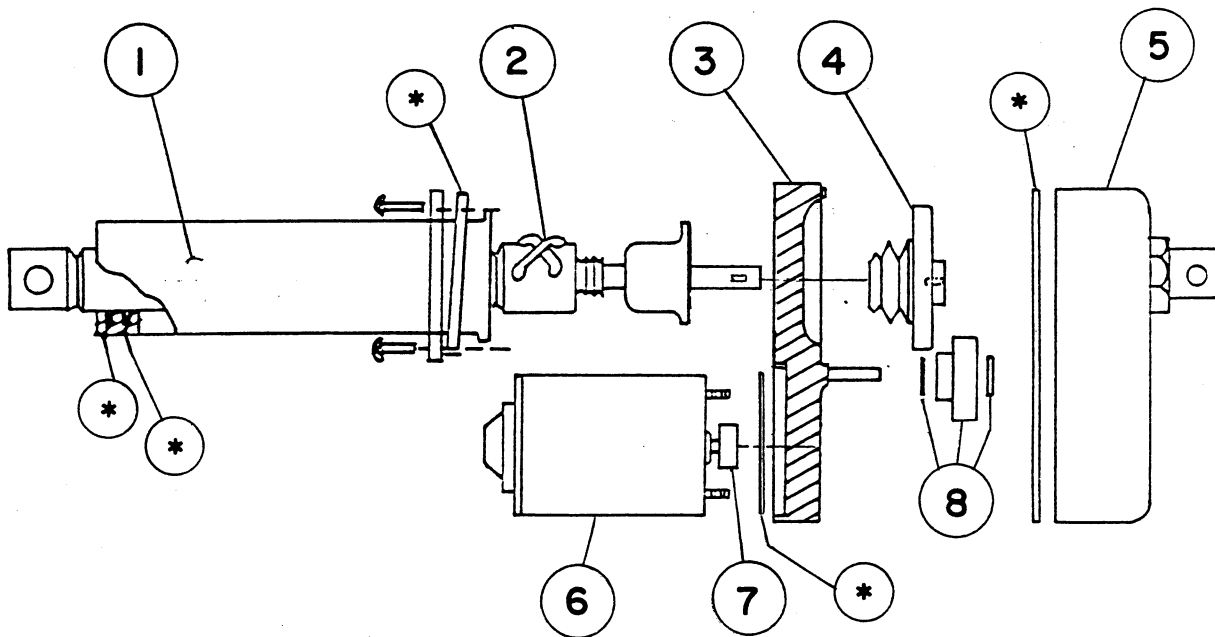
ELECTRIC BOOM LIFT KIT



REF.	PART NO.	DESCRIPTION	QTY
1	28-28-D	Hair Pin Cotter, 1/8 x 1" (f/w Boom Frame)...	4
2	42195	Clevis Pin, 1/2 x 2" (f/w Boom Frame).....	4
3	42833	Actuator Assembly.....	2
4	30954	Switch.....	2
5	30955	Rubber Boot.....	2
6	87-0610	Decal.....	1
*	42203	Wire Harness Assembly.....	1
*	42765	30-amp Fuse.....	1
*	42875	#10 Insulated Spade Terminal.....	1
*	41276	1/4" Female Push-On Terminal.....	1
*	95672	Plastic Sta-Strap.....	4

* Indicates Parts furnished, but not shown.

42833 ACTUATOR



REF	PART NO	DESCRIPTION	QTY
1	42844	Cover Tube	1
2	42848	Drive Screw Assembly	1
3	42850	Front Housing	1
4	42847	Clutch Assembly	1
5	42845	Rear Housing	1
6	42849	Motor.....	1
7	42852	Motor Pinion Gear.....	1
8	42846	Intermediate Gear.....	1
*	42851	Sealing Kit	AR