



MODEL NO. 41224-90001 &amp; UP

SET-UP AND  
PARTS LIST

## FOAM MARKER KIT

for the WORKMAN® SPRAY SYSTEM

Refer to the illustrated Parts List for the details of parts used in assembling the Foam Marker Kit.

"Right" and "Left" as used in the following instructions, refer to the operator's right and left when seated in the normal operating position. Likewise, "Front" and "Rear" as seen from the operator's position.

**NOTE:** If installing this Kit on a vehicle equipped with "Enclosed Boom," work these instructions with the "Enclosed Boom" Instructions found in the Set-up and Parts manual.

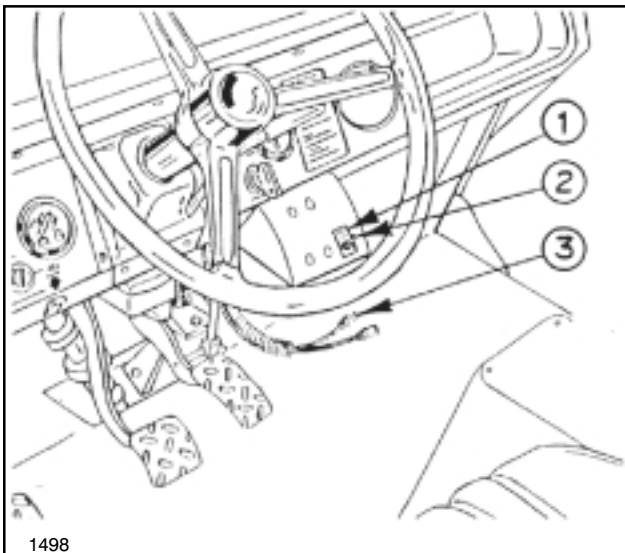


FIG. 1

1. Foam Marker Decal      3. Wire Harness  
2. Foam Marker Switch

1. Install the Toro Spray System as per instructions with that kit.

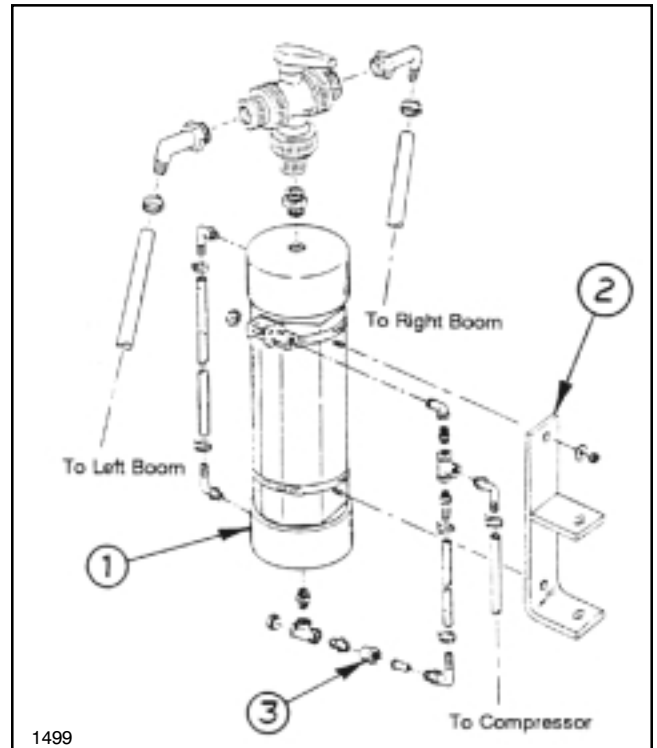
2. Raise the tank and skid assembly and support with the support rod.

3. Remove the (4) 3/8" x 1" hex hd cap screws and (2) nuts securing the radiator cover to vehicle frame and remove radiator cover.

4. Unplug the wire harness connectors from both headlights.

5. Remove the (15) screws and washers securing front hood to vehicle frame and remove hood.

6. Affix foam marker decal around the right hole of the switch bracket (FIG. 1).



1499

FIG. 2

1. Tank Ass'y      3. Plastic Check Valve  
2. Tank Bracket

7. Mount foam marker switch in the lower right hole of the switch bracket with (2) hex nuts. See FIG. 1.

8. Plug the (2) push-on terminals of the wire harness into foam marker switch (FIG. 1).

9. Route the wiring harness under the dash panel and secure with cable ties to the front frame support. Harness must not interfere with operation of any controls.

10. Route harness through opening in floorboard following the electric clutch wiring harness towards the rear of the passenger seat.

11. Affix foam marker 20 amp fuse decal to any unused circuit on vehicle.

12. Plug the 6" lead of the foam marker wire harness into the fuse block lead wire as chosen in Step 11.

13. Remove the upper and lower left carriage bolt and nuts located on the rear of the passenger seat frame. Relocate manual storage tube to behind drivers seat if required.

14. Mount the foam marker tank bracket to the rear of the passenger seat frame with the carriage bolts and nuts previously removed. See FIG. 2.

15. Assemble the tank complete as shown in FIG. 2.

**IMPORTANT: The PLASTIC check valve must be installed at the tee at the bottom of the tank. The BRASS check valve should be installed at the tee on top of the compressor.**

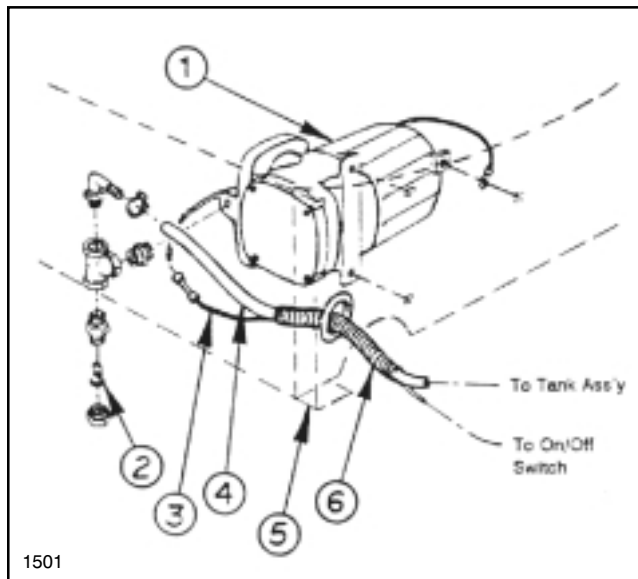


FIG. 3

- |                      |                    |
|----------------------|--------------------|
| 1. Compressor        | 4. 48" Hose        |
| 2. Brass Check Valve | 5. Tank/Skid Ass'y |
| 3. Auxiliary Wire    | 6. Plastic Loom    |

16. Mount the foam marker tank and bracket assembly to the mounting bracket with (2) 1/4" flatwashers and (2) 1/4" lockwashers.

17. Assemble the compressor complete as shown in FIG. 3. Connect the 48" hose to the barb fitting on the compressor. Secure with a hose clamp.

18. Install the (2) grommets into the front and rear hose cutouts on tank/skid assembly.

19. Mount the compressor underneath the right front corner of the tank/skid assembly with (3) #8 self-tapping screws (FIG. 3). Ground the ring terminal on the black compressor wire to one of the mounting screws.

20. Locate the orange auxiliary wire and insert the stripped end of the red compressor wire into the butt splice connector on the auxiliary wire. Crimp the connector (FIG. 3).

21. Plug the auxiliary compressor wire into the main wiring harness.

22. Connect the hose from the compressor to the hose barb in the tee on the side of the foam tank and secure with a hose clamp (FIG. 2).

23. Place the 48" x 3/4" black plastic loom over the wiring harness and the connector hose between foam tank and compressor (FIG. 3).

24. Connect the (2) boom hose to the hose barb in the control valve on top of the foam tank. Secure with hose clamps (FIG. 2). Mark the hoses as left and right for boom connection.

25. Route the two boom hoses through the front cutout hole in the skid, through the hose ring, and out the rear cutout hole.

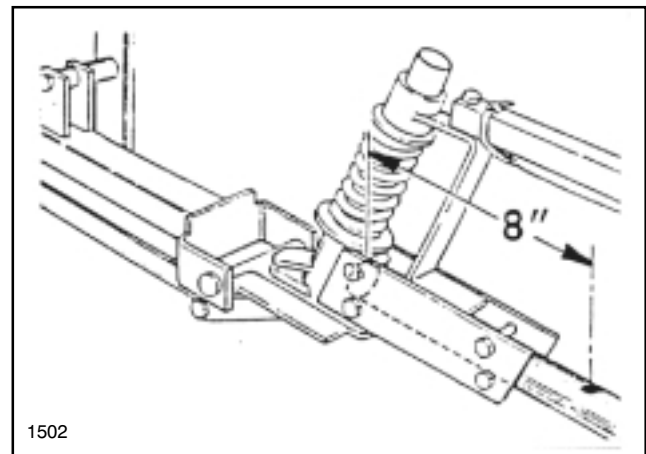


FIG. 4

26. Locate, mark, and drill through the top surface only, one 9/32" dia. hole at 8 inches from the ends of the right and left boom pipes. See FIG. 4.

27. Install the split eyelet connectors and 3/8" 90° hose barbs into the holes previously drilled in the boom pipes (FIG. 5).

28. Connect the boom hoses to the 3/8" hose barbs located in the split eyelet connectors. Secure with hose clamps (FIG. 5).

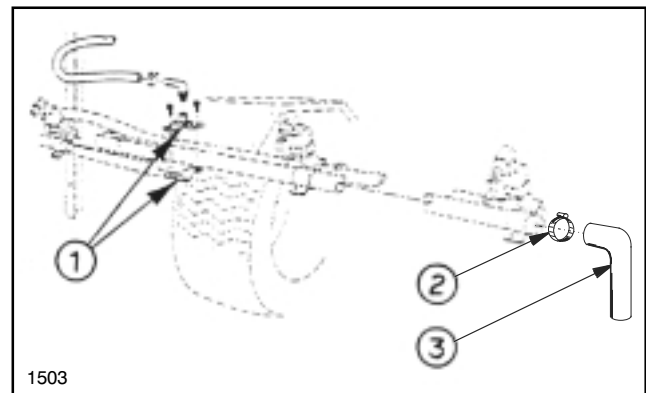


FIG. 5

- |                           |                   |
|---------------------------|-------------------|
| 1. Split-Eyelet Connector | 3. Extension Hose |
| 2. Hose Clamp             |                   |

**29.** Slide Extension Hose over the boom pipe and secure with hose clamp.

**30.** Secure all wiring and hose to the vehicle frame with cable ties.

**31.** Insert 20 amp fuse into fuse block at location shown on decal previously installed.

**32.** Activate foam marker switch and check for proper operation.

**33.** Reinstall the hood using the 15 screws and washers earlier removed.

**34.** Reconnect the wire harness connectors to both headlights.

**35.** Reinstall the radiator cover using the (4) 3/8" x 1" hex hd. cap screws and (2) nuts.

**36.** Refer to the FOAM MARKER KIT 3000 OPERATORS MANUAL for the proper instructions for operation of the foam marker system.

## NOTES:

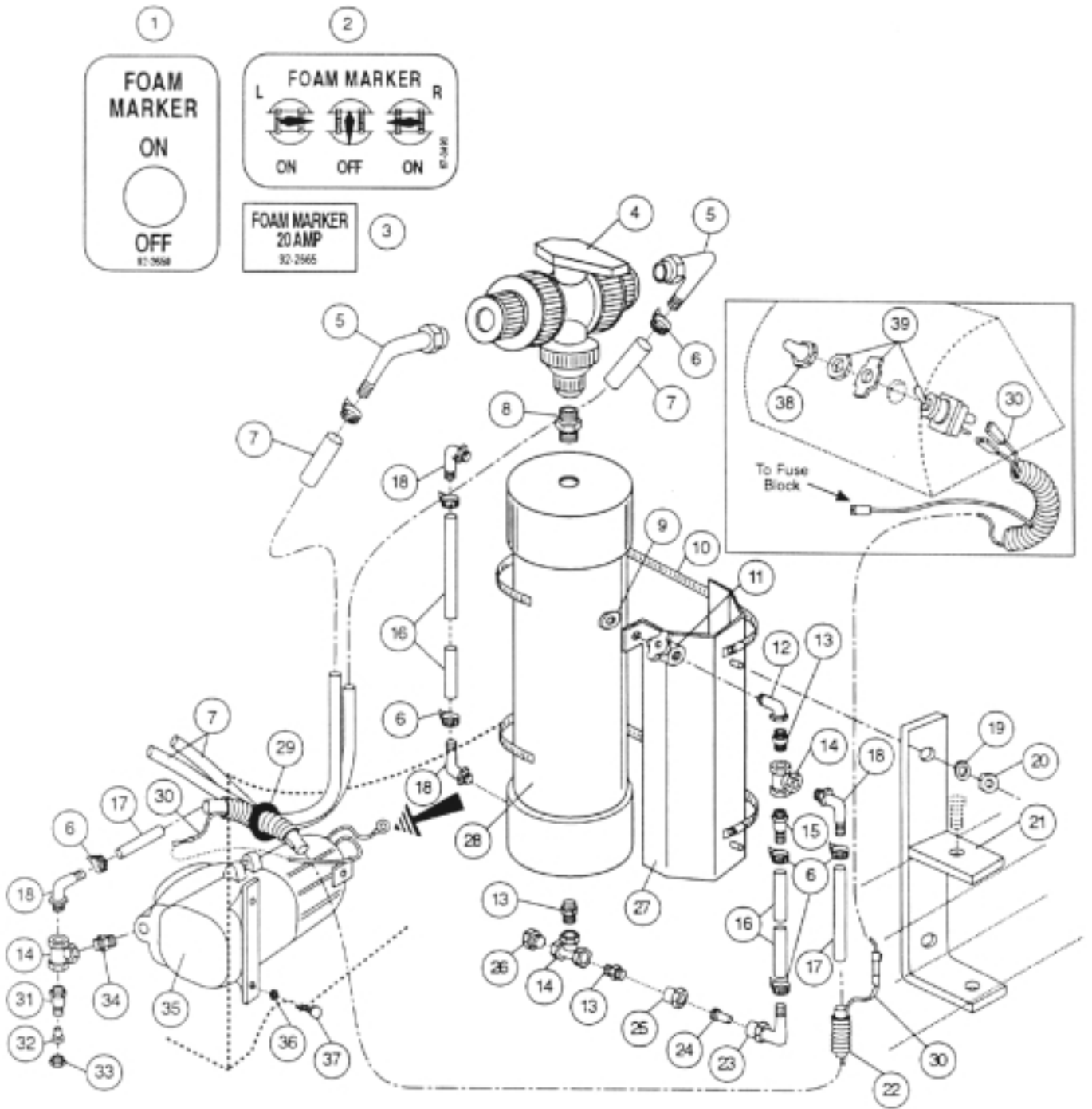
## TANK & COMPRESSOR

Ref.	Part No.	Description	Qty
1	92-2659	Decal - On/Off	1
2	87-0490	Decal - Foam On/Off	1
3	92-2665	Decal - 20 Amp	1
4	41272	3-Way Valve, 3/4 FPT	1
5	41295	90° Hose Barb, 3/4 MPT x 3/8 Barb	2
6	96609	Hose Clamp	8
7	92-3713	Hose - Tank to Boom 3/8 I.D. x 14'-6"	2
8	41294	Close Nipple, 3/4 MPT	1
9	98489	Lock Nut, 1/4 NPT	1
10	41299	Hose Clamp	2
11	41282	Ball Valve, 1/4 NPT	1
12	41311	90° Street Elbow, 1/4 MPT	1
13	41288	Close Nipple, 1/4 NPT	3
14	41286	Tee, 1/4 FPT	3
15	21121	Hose Barb, 1/4 MPT x 3/8 Barb	1
16	41261	Hose, 3/8 I.D. x 16 1/4"	2
17	92-3712	Hose, 3/8 I.D. x 48"	1
18	41292	90° Hose Barb, 1/4 MPT x 3/8 Barb	4
19	3256-2	Flat Washer, 1/4	2
20	32146-17	Locknut, 1/4 NC	2

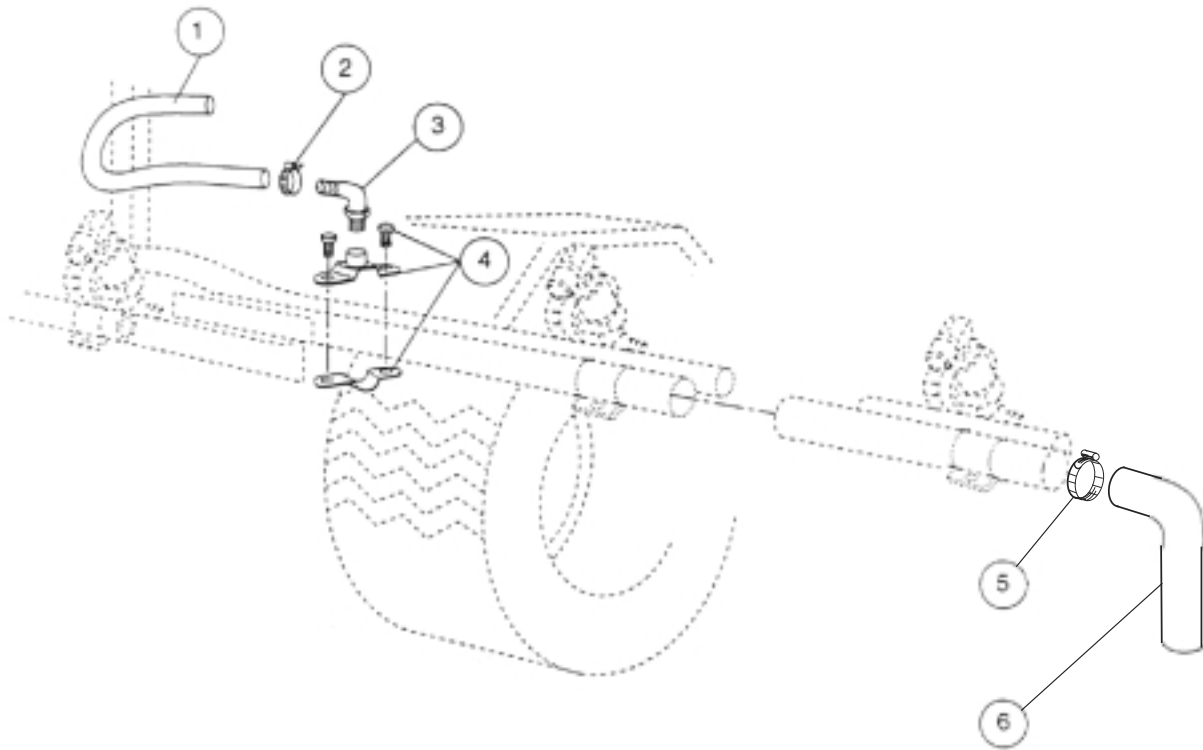
Ref.	Part No.	Description	Qty
21	92-3633	Foam Marker Tank Bracket	1
22	92-3710	Wire Loom	1
23	41290	90° Nozzle Body	1
24	41291	Check Valve (Plastic)	1
25	41289	Outlet Adapter	1
26	41287	Hex Plug, 1/4 MPT	1
27	41269	Tank Mounting Bracket	1
28	41264	Foam Tank	1
29	40764	Grommet	2
30	92-3711	Wre Harness	1
31	41283	Nozzle Body	1
32	41284	Strainer & Check Valve (Brass)	1
33	41285	Nozzle Cap	1
34	41281	Reducing Nipple, 1/4 MPT x 1/8 MPT	1
35	41259	Compressor	1
36	3253-17	Lockwasher, 3/16 MED	3
37	32144-87	Hex HD Self-Tap Scr, H8 NC x 1/2	3
38	30955	Boot	1
39	30953	Switch	1
*	42764	Fuse - 20 Amp	1

\*Indicates parts included but not shown

# TANK & COMPRESSOR



1504



**BOOMS  
(RIGHT HAND BOOM SHOWN)**

1505

Ref.	Part No.	Description	Qty
1	92-3713	Hose - Tank to Boom 3/8 I.D.. x 14"-6"	2
2	96609	Hose Clamp	2
3	41292	90° Hose Barb, 1/4 MPT x 3/8 HB	2
4	41296	Split Eyelet Connector	2
5	21146	Hose Clamp	2
6	93-0611	Extension Hose	2

# NOTES:



*Helping you put quality into play.®*