



MODEL NO. 41026-30101 &amp; UP

SET-UP AND  
PARTS LIST

## HOSE REEL KIT

Refer to the illustrated Parts List for the details of parts used in assembling the Hose Reel Kit.

"Right" and "Left" as used the following instructions, refer to the operator's right and left when seated in the normal operating position. Likewise, "Front" and "Rear" as seen from the operator's position.

**FRAME ASSEMBLY:**

1. Install the two Leg Assemblies onto the Vehicle Frame as shown in FIG. 1, using eight mounting lugs, eight 3/8 x 4-1/2" cap screws and lock nuts. Tighten the fasteners to "just snug" to permit any necessary adjustments.
2. Attach the welded Hose Reel Mounting Assembly to the two Leg Assemblies with four 1/2 x 1-1/4" cap screws, lock washers and hex nuts. **IMPORTANT!** There are two different hole patterns (see the illustrated Parts List) for mounting the Reel Mounting Assembly to the Leg Assemblies. Be sure to match the holes as indicated for use on the Vehicle to be used.
3. Install the Hose Reel Assembly onto the Reel Mounting Assembly, using the four 3/8 x 1" cap screws, flat washers and lock nuts.
4. Crimp the 3/8" ring terminal to the **NEGATIVE (-)** wire from the Reel Motor. Ground the **NEGATIVE (-)** wire to the left-rear screw used to mount the Hose Reel Assembly to the frame.
5. Tighten all fasteners securely in order to insure a solid, rigid installation.
6. Attach the Electrical Box assembly to the right rear angle with a 1/2 x 1-1/4" cap screw and lock nut.
7. Remove the screws holding the Cover to the Electric Box, to gain access to the electrical components mounted to the inside of the Box Cover.
8. Feed the **POSITIVE (+)** wire from the Reel Motor through the wire bushing in bottom of the Electric Box. Crimp the #10 ring terminal to the **POSITIVE (+)** wire.
9. Connect the **POSITIVE (+)** wire to the open terminal on the circuit breaker, which is mounted on the Box Cover.
10. Apply a "bead" of silicone to the four flanges of the Electric Box. Replace the Box Cover, using four #10 x 1/2" machine screws, flat washers and hex nuts. Apply additional silicone to make a seal around the wires at the wire bushing.
11. Connect the Power wire to the terminal on the Starter Solenoid (where the RED Battery wire is connected) on the engine.

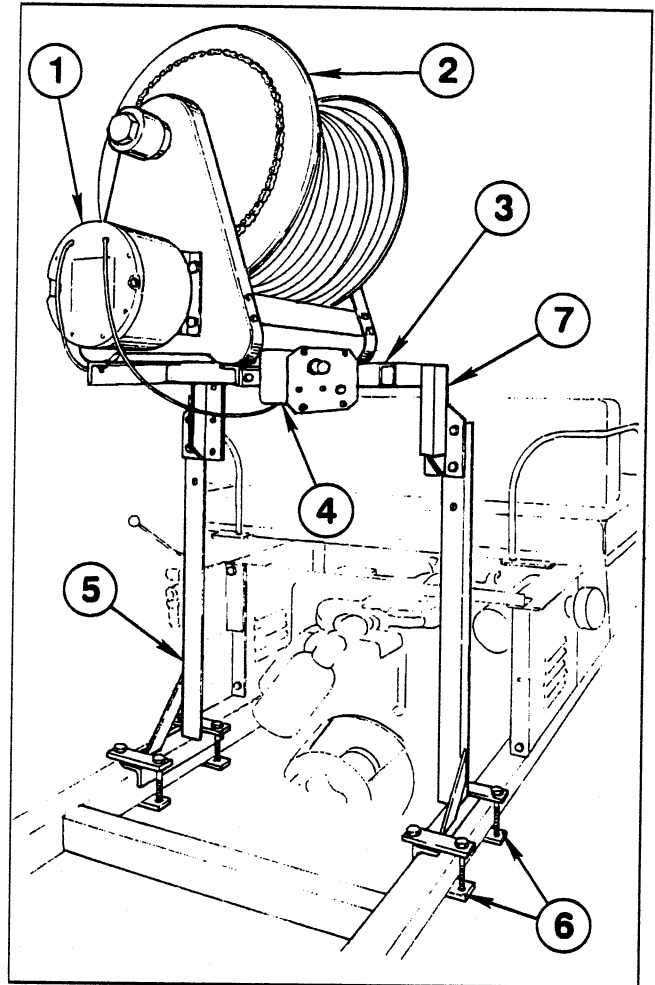


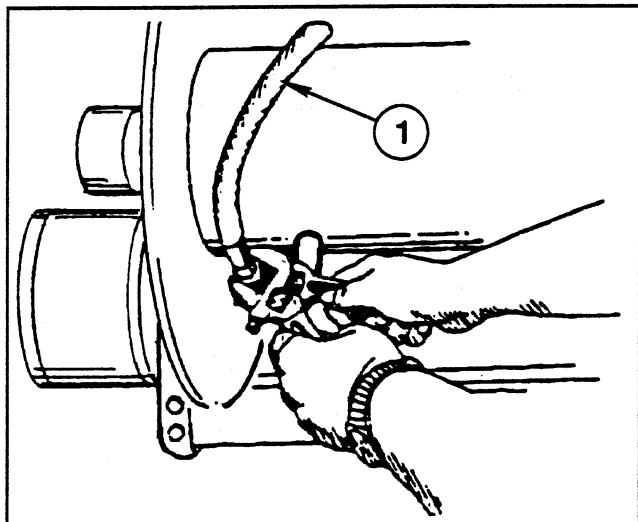
FIG. 1

- |                             |                        |
|-----------------------------|------------------------|
| 1. Reel Motor               | 4. Electric Box Ass'y  |
| 2. Hose Reel Assembly       | 5. Hose Reel Leg Ass'y |
| 3. Hose Reel Mounting Ass'y | 6. Mounting Lug        |
|                             | 7. Spray Gun Holder    |

## CONNECTING THE SPRAY HOSE:

**NOTE: Apply thread compound to all threads.**

1. Hand thread the male hose connector into the connecting tube on the Reel Shaft. See FIG. 2.
2. Using a wrench, firmly hold onto the connecting tube, while tightening the hose connector.

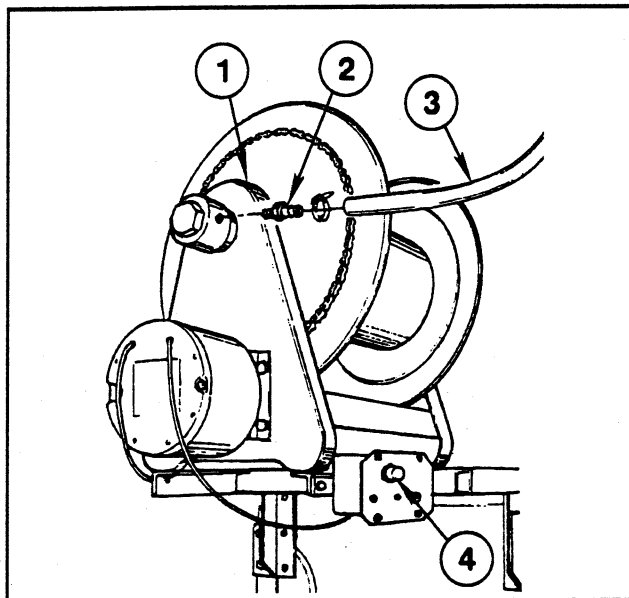


**FIG. 2**  
1. Spray Hose

2. Connect the other end of the Supply Hose as shown in the Hose Reel's illustrated Parts List on page 4.

## SPOOL ROTATION:

Adjust Reel "drag" by loosening or tightening the set screw on the hub casting. See FIG. 3.



**FIG. 3**  
1. Access to "Drag" Adjustment Screw  
2. Hose Barb  
3. Supply Hose  
4. Reel Switch

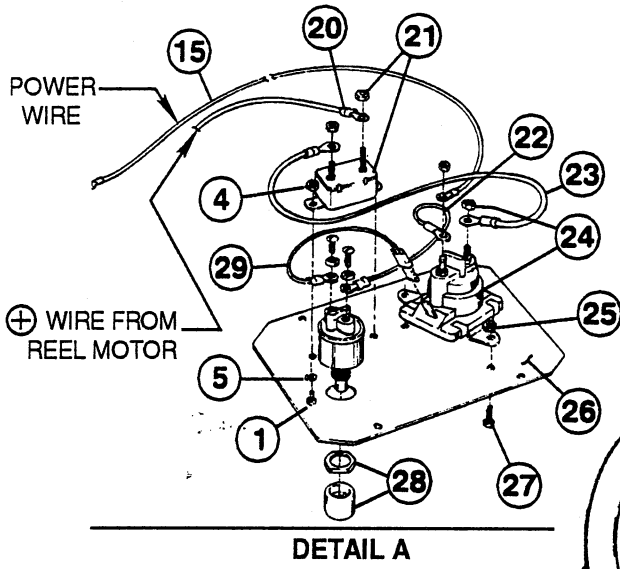
## CONNECTING THE SUPPLY HOSE:

1. Install the hose barb into the Swivel Assembly as shown in FIG. 3 and secure the Supply Hose with a hose clamp.

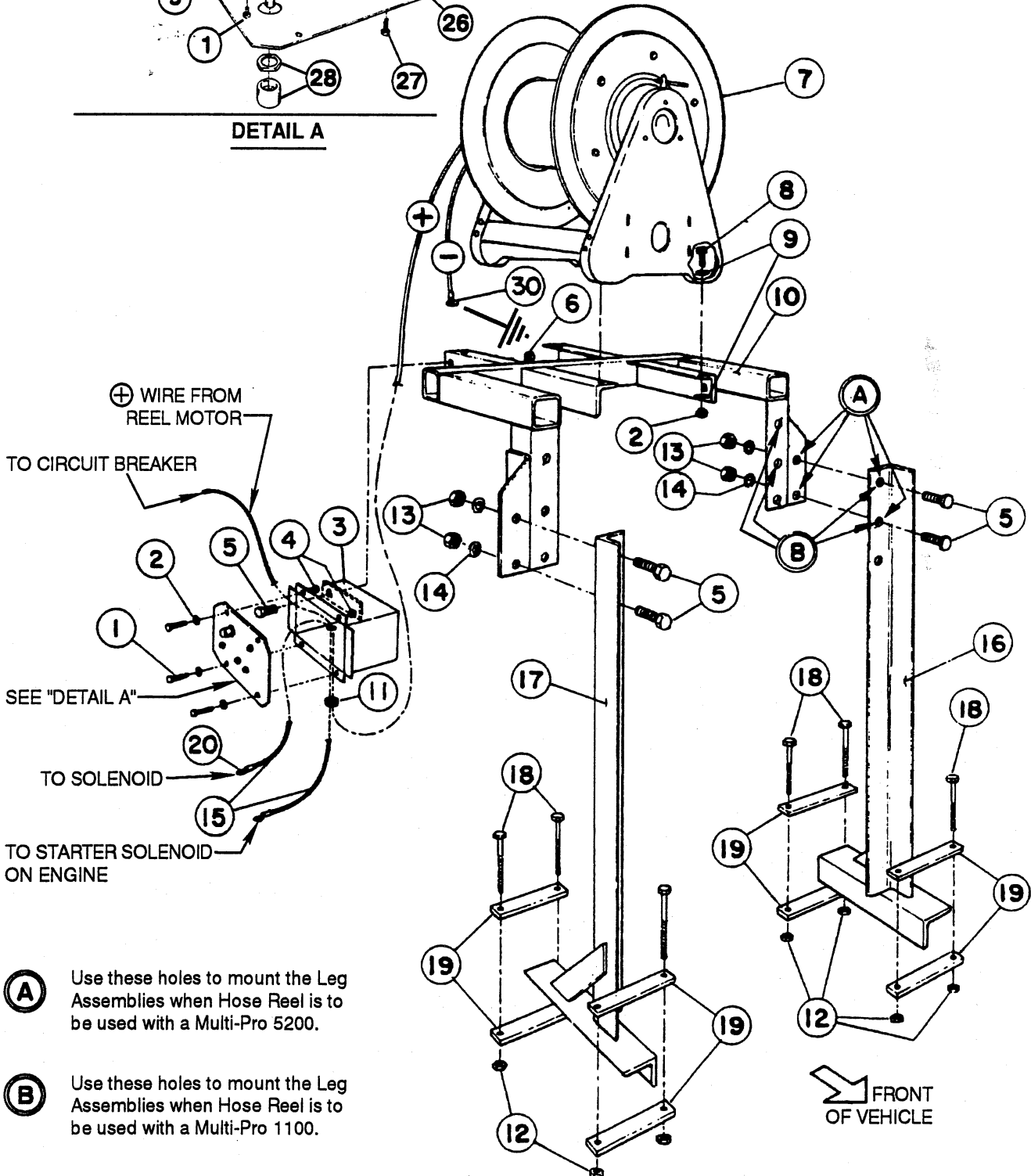
## HOSE REEL FRAME

Ref	Part No.	Description	Qty
1	21-96-BMD	Hex Hd. Mach. Screw, #10 NF x 1-1/2"	6
2	24-7-BD	Flat Washer, #10 S.A.E.	6
3	42397	Electric Box Assembly	1
4	22-9-BJD	Hex Nut, #10 NF	6
5	20-86-AGD	HHCS, 1/2 NC x 1-1/4" (Grade 5)	5
6	22-15-AJFD	Lock Nut, 1/2 NC	1
7	42200	Hose Reel Assembly	1
	42204	Spray Hose Assy, 5/8 x 150 Ft.	1
8	20-47-AGD	HHCS, 3/8 NC x 1" (Grade 5)	4
9	24-11-AD	Flat Washer, 3/8 S.A.E.	8
10	42523	Hose Reel Mtg. Assy - Welded	1
11	42205	Wirebushing	1
12	22-13-AJFD	Lock Nut, 3/8 NC	12
13	22-15-AJD	Hex Nut, 1/2 NC	4
14	23-13-GD	Lock Washer, 1/2 Med.	4
15	42209	Wire Assy - Power	1

Ref	Part No.	Description	Qty
16	42586	Hose Reel Leg Assy - L.H.	1
17	42579	Hose Reel Leg Assy - R.H.	1
18	20-60-AGD	HHCS, 3/8 NC x 4-1/2" (Grade 5)	8
19	42531	Mounting Lug	8
20	42312	Insulated Terminal - #10 Ring	1
21	42201	Circuit Breaker	1
22	42207	Wire Assy - Solenoid to Switch	1
23	42206	Wire Assy - Solenoid to Breaker	1
24	41019	Solenoid	1
25	22-11-AJD	Hex Nut, 1/4 NC	2
26	42310	Electrical Box Cover	1
27	34-140-AMVD	Hex Washer Hd. Screw, 1/4 NC x 5/8"	2
28	42202	Momentary Switch	1
29	42208	Wire Assy - Switch to Solenoid	1
30	42313	Terminal - Insulated 3/8 Ring	1

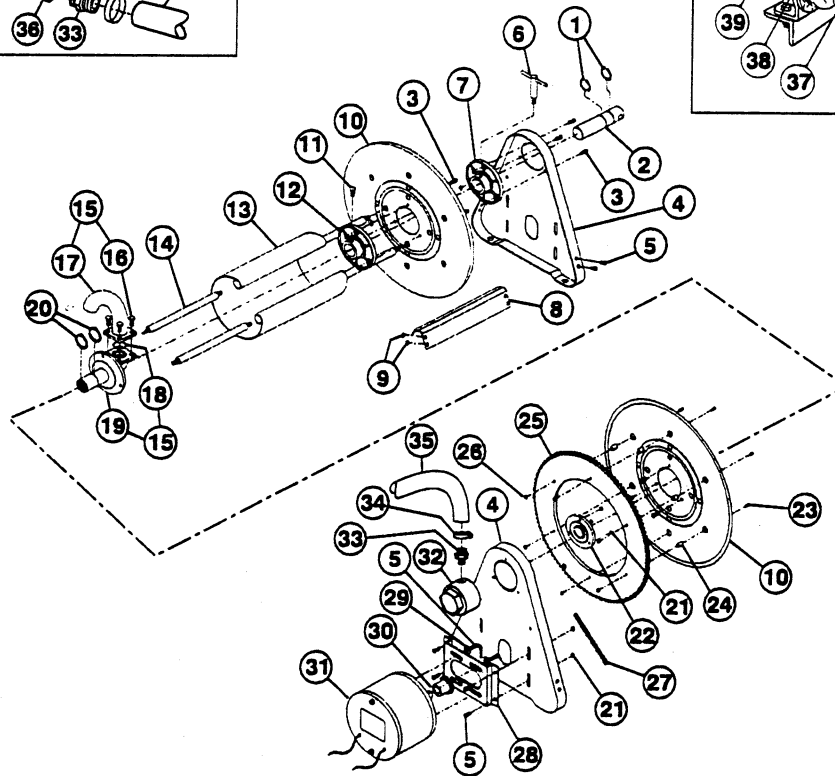
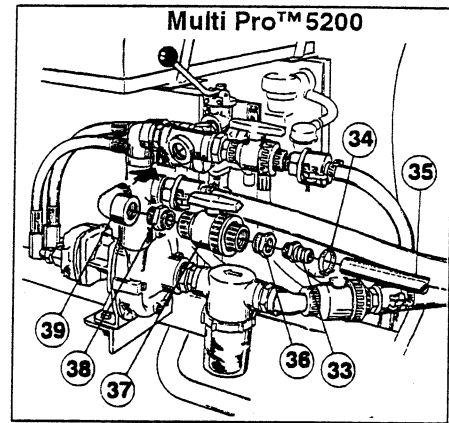
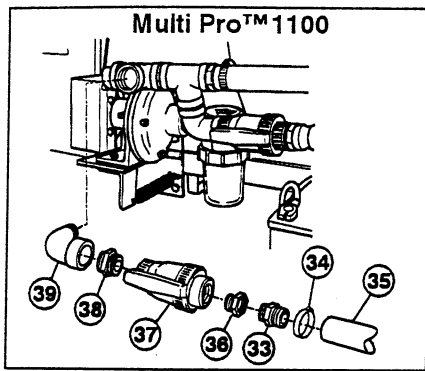


## HOSE REEL FRAME



**A** Use these holes to mount the Leg Assemblies when Hose Reel is to be used with a Multi-Pro 5200.

**B** Use these holes to mount the Leg Assemblies when Hose Reel is to be used with a Multi-Pro 1100.



Ref	Part No.	Description	Qty
1	42346	Snap Ring, 1-1/4"	4
2	92-8254	Support Shaft	
3	42337	Machine Screw, 1/4-20 x 5/8"	12
4	42339	Frame - Side	2
5	20-22-AD	HHCS, 5/16 NC x 1/2"	8
6	42338	Lock Handle Assembly	1
7	42340	Bearing & Brake Collar Assembly	2
8	42348	Brace, Cross	2
9	22-12-AJFD	Lock Nut, 5/16 NC	16
10	42341	Flange - Spool	2
11	32-127-ANSC	Hex Skt. Hd Set Scr., 3/8 NC x 1/2	2
12	92-8258	Bearing - Hub	1
13	92-8259	Spacer - Spool	1
14	42345	Tie Rod	4
15	92-8253	Inlet Assembly	1
16	20-24-AGD	HHCS, 5/16 NC x 3/4"	4
17	92-8256	Outlet Tube, 1/2"	1
18	92-8257	O-Ring	1
19	92-8255	Inlet Casting Flange	1
20	42346	1-1/4" Snap Ring	4

Ref	Part No.	Description	Qty
21	22-11-AJFD	Hex Whiz Nut, 1/4 NC	12
22	42349	Hub Sheave, Bearing	1
23	42350	10-32 x 7/8" Cap Screw	6
24	42351	Spacer, Gear	6
25	42352	Gear, Spool	1
26	22-9-BJD	#10-32 Flange Nut	6
27	42357	Chain	1
28	42354	Bracket, Motor	1
29	24-10-AD	Flat Washer, 5/16"	4
30	42355	Gear, Motor, 1/2" Barb	1
31	42356	Motor, Drive	1
32	42353	3/4" Swivel Assembly	1
33	41313	Hose Barb, 1/2 MPT x 3/4 HB	2
34	92-0045	Hose Clamp	2
35	42534	Supply Hose, 3/4" I.D. x 84"	1
36	41306	Red. Bushing, 1" MPT x 1/2" FPT	1
37	40020	Ball Valve, 11" NPT	1
38	41304	Close Nipple, 1" NPT	1
39	41307	90° St. Elbow, 1" NPT	1