



MODEL NO. 41026-60101 & UP

SET-UP AND
PARTS LIST

HOSE REEL KIT for the Multi-Pro® 1100

Refer to the illustrated Parts List for the details of parts used in assembling the Hose Reel Kit.

“Right” and “Left” as used in the following instructions, refer to the operator’s right and left when seated in the normal operating position. Likewise, “Front” and “Rear” as seen from the operator’s position.

NOTE: If installing Hose Reel Kit on a Multi-Pro® vehicle with a ROPS Kit, please refer to ROPS Kit instructions for proper mounting of this kit. The ROPS must be installed prior to the Hose Reel Kit if both kits are used.

FRAME ASSEMBLY:

1. Disconnect negative battery terminal from the Battery.

2. Install the two Leg Assemblies onto the Vehicle Frame, using four (4) 1/2" cap screws, hex nuts, and eight (8) flat washers (refer to illustrated parts list on page 3). Tighten the fasteners to “just snug” to permit any necessary adjustments.

3. Attach the welded Hose Reel Mounting Assembly to the two Leg Assemblies with four 1/2 x 1-1/4" cap screws, lock washers and hex nuts. **IMPORTANT! There are two different hole patterns (see the illustrated Parts List) for mounting the Reel Mounting Assembly to the Leg Assemblies. Be sure to match the holes as indicated for use on the Vehicle to be used.**

4. Install the Hose Reel Assembly onto the Reel Mounting Assembly, using the four 3/8 x 1" cap screws, flat washers and lock nuts.

5. Crimp the 3/8" ring terminal to the NEGATIVE (-) wire from the Reel Motor. Ground the NEGATIVE (-) wire to the left-rear screw used to mount the Hose Reel Assembly to the frame.

6. Tighten all fasteners securely in order to insure a solid, rigid installation.

7. Attach the Electrical Box assembly to the right rear angle with a 1/2 x 1-1/4" cap screw and lock nut.

8. Remove the screws holding the Cover to the Electric Box, to gain access to the electrical components mounted to the inside of the Box Cover.

9. Feed the POSITIVE (+) wire from the Reel Motor through the wire bushing in bottom of the Electric Box. Crimp the #10 ring terminal to the POSITIVE (+) wire.

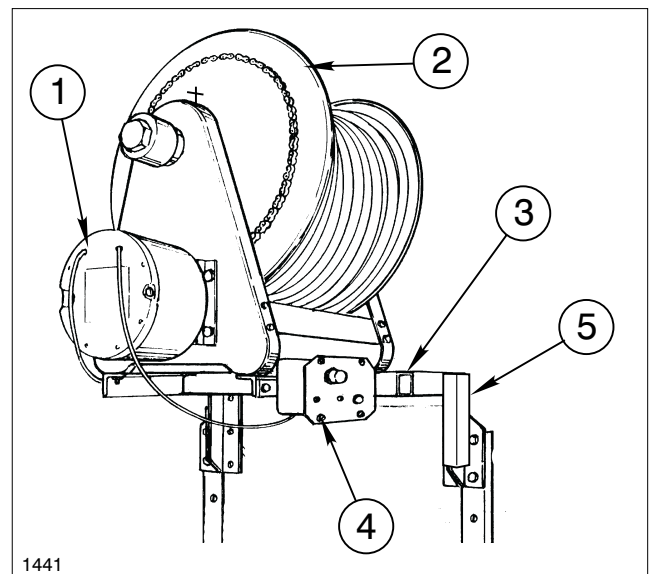


FIG. 1

- | | |
|-----------------------------|-----------------------|
| 1. Reel Motor | 4. Electric Box Ass'y |
| 2. Hose Reel Assembly | 5. Spray Gun Holder |
| 3. Hose Reel Mounting Ass'y | |

10. Connect the POSITIVE (+) wire to the open terminal on the circuit breaker, which is mounted on the Box Cover.

11. Apply a “bead” of silicone to the four flanges of the Electric Box. Replace the Box Cover, using four #10 x 1/2" machine screws, flat washers and hex nuts. Apply additional silicone to make a seal around the wires at the wire bushing.

12. Connect the Power wire to the terminal on the Starter Solenoid (where the RED Battery wire is connected) on the engine.

13. Reconnect the negative battery terminal.

CONNECTING THE SPRAY HOSE:

NOTE: Apply thread compound to all threads.

1. Hand thread the male hose connector into the connecting tube on the Reel Shaft. See FIG. 2.
2. Using a wrench, firmly hold onto the connecting tube, while tightening the hose connector.

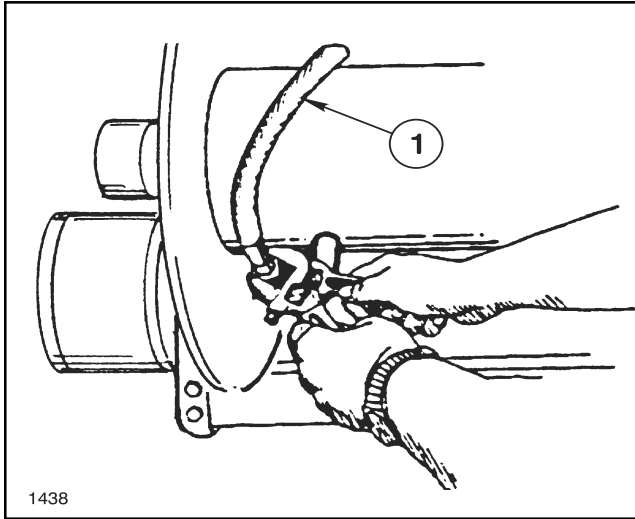


FIG. 2
1. Spray Hose

CONNECTING THE SUPPLY HOSE:

1. Install the hose barb into the Swivel Assembly as shown in FIG. 3 and secure the Supply Hose with a hose clamp.

2. Connect the other end of the Supply Hose as shown in the Hose Reel's illustrated Parts List on page 4.

SPOOL ROTATION:

Adjust Reel "drag" by loosening or tightening the set screw on the hub casting. See FIG. 3.

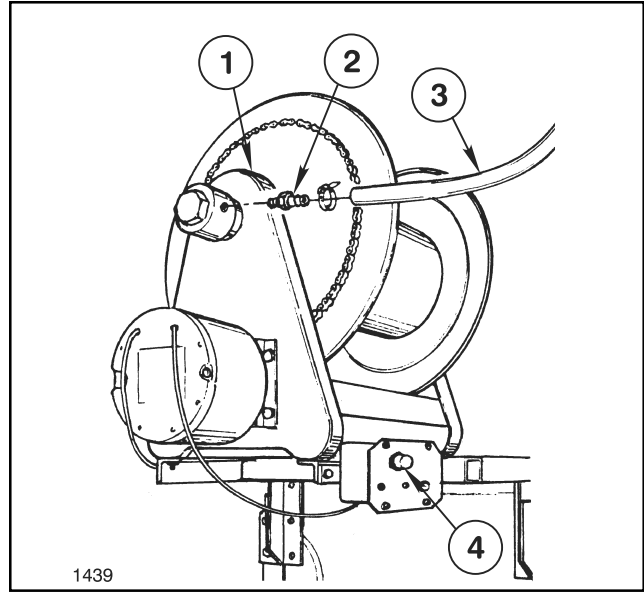


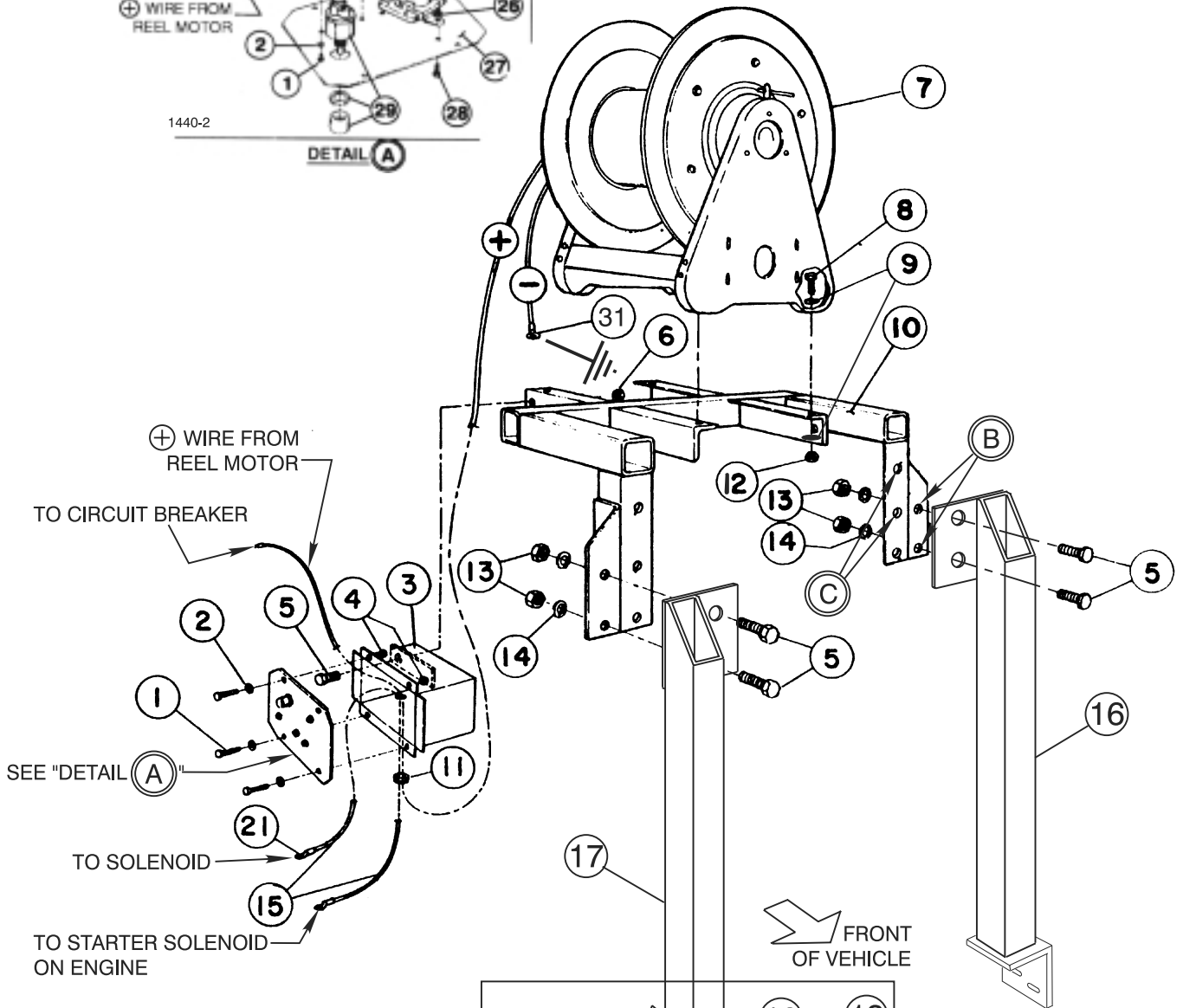
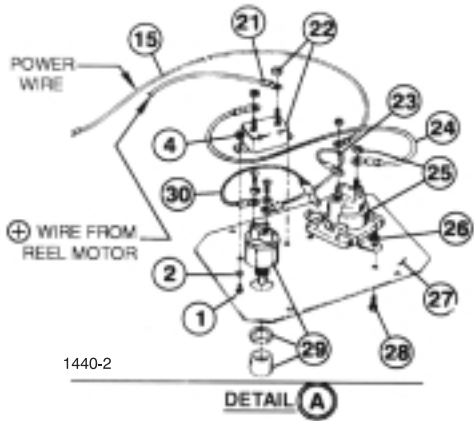
FIG. 3
1. Access to "Drag" Adjustment Screw
2. Hose Barb
3. Supply Hose
4. Reel Switch

HOSE REEL FRAME

Ref	Part No.	Description	Qty
1	3250-31	Hex Hd. Mach. Screw, #10 NF x 1-1/2"	6
2	3256-14	Flat Washer, #10 S.A.E.	6
3	42397	Electric Box Assembly	1
4	3219-14	Hex Nut, #10 NF	6
5	325-5	HHCS, 1/2 NC x 1-1/4" (Grade 5)	5
6	32153-5	Lock Nut, 1/2 NC	1
7	42200	Hose Reel Assembly	1
	42204	Spray Hose Ass'y, 5/8 x 150 Ft.	1
8	323-6	HHCS, 3/8 NC x 1" (Grade 5)	4
9	3256-4	Flat Washer, 3/8 S.A. E.	8
10	42523	Hose Reel Mtg. Ass'y - Welded	1
11	42205	Wirebushing	1
12	32153-2	Lock Nut, 3/8 NC	12
13	3217-9	Hex Nut, 1/2 NC	4
14	3253-7	Lock Washer, 1/2 Med.	4
15	42209	Wire Ass'y - Power	1

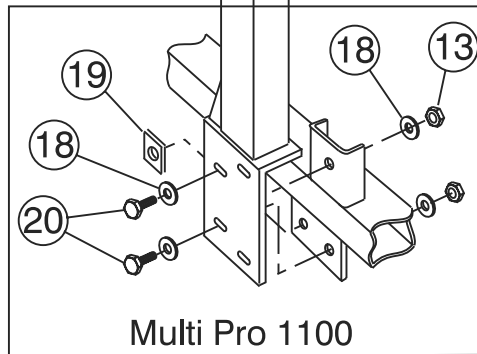
Ref	Part No.	Description	Qty
16	94-7232	Hose Reel Leg Ass'y - L.H.	1
17	94-7231	Hose Reel Leg Ass'y - R.H.	1
18	3256-6	1/2" Flt Washer, Plated	8
19	94-7238	Spacer Plate	1
20	325-6	1/2-13 x 1-1/2" HHCS	4
21	42312	Insulated Terminal - #10 Ring	1
22	42201	Circuit Breaker	1
23	42207	Wire Ass'y - Solenoid to Switch	1
24	42206	Wire Ass'y - Solenoid to Breaker	1
25	41019	Solenoid	1
26	3217-5	Hex Nut, 1/4 NC	2
27	95-2495	Electrical Box Cover	1
28	32104-95	Hex Washer Hd. Screw, 1/4 NC x 5/8"	2
29	42202	Momentary Switch	1
30	42208	Wire Ass'y - Switch to Solenoid	1
31	42313	Terminal - Insulated 3/8 Ring	1

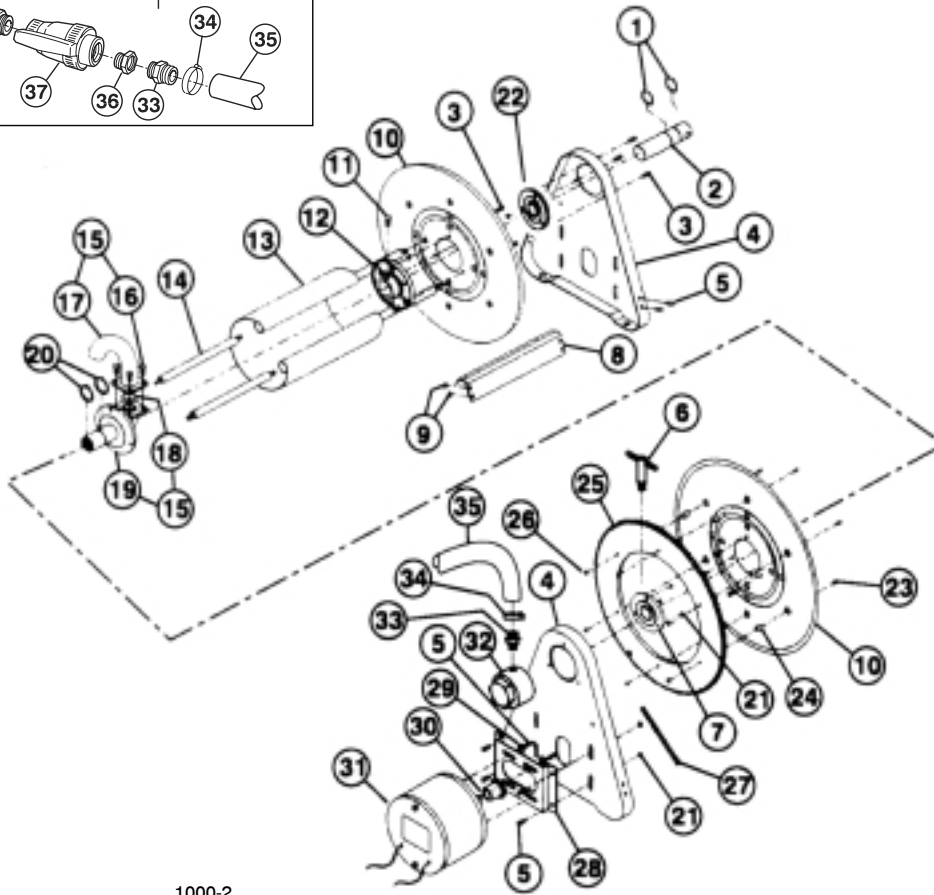
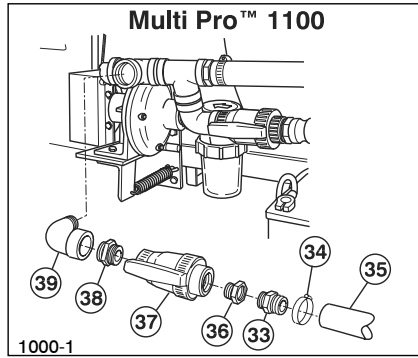
HOSE REEL FRAME



(B) Use these holes to mount the Leg Assemblies when Hose Reel is to be used with a Multi Pro 5500.

(C) Use these holes to mount the Leg Assemblies when Hose Reel is to be used with a Multi Pro 1100.





Ref.	Part No.	Description	Qty
1	42346	Snap Ring, 1-1/4"	4
2	92-8254	Support Shaft	
3	42337	Machine Screw, 1/4-20 x 5/8"	12
4	42339	Frame - Side	2
5	322-1	HHCS, 5/16 NC x 1/2"	8
6	42338	Lock Handle Assembly	1
7	42340	Bearing & Brake Collar Assembly	2
8	42348	Brace, Craoo	2
9	32153-3	Lock Nut, 5/16 NC	16
10	42341	Flange - Spool	2
11	32153-3	Hex Skt. Hd Set Scr., 3/8 NC x 1/2"	2
12	92-8258	Bearing - Hub	1
13	92-8259	Spacer - Spool	1
14	42345	Tie Rod	4
15	92-8253	Inlet Assembly	1
16	322-3	HHCS, 5/16 NC x 3/4"	4
17	92-8256	Outlet Tube, 1/2"	1
18	92-8257	O-Ring	1
19	92-8255	Inlet Casting Flange	1
20	42346	1-1/4" Snap Ring	4

Ref.	Part No.	Description	Qty
21	32153-4	Hex Whiz Nut, 1/4 NC	12
22	42349	Hub Sheave, Bearing	1
23	42350	10-32 x 7/8" Cap Screw	6
24	42351	Spacer, Gear	6
25	42352	Gear, Spool	1
26	3219-14	#10-32 Flange Nut	6
27	42357	Chain	1
28	42354	Bracket, Motor	1
29	3256-3	Flat Washer, 5/16"	4
30	42355	Gear, Motor, 1/2" Barb	1
31	42356	Motor, Drive	1
32	42353	3/4" Swivel Assembly	1
33	41313	Hose Barb, 1/2 MPT x 3/4 HB	2
34	92-0045	Hose Clamp	2
35	42534	Supply Hose, 3/4" I.D. x 84"	1
36	41306	Red. Bushing, 1" MPT x 1/2" FPT	1
37	40020	Ball Valve, 11" NPT	1
38	41304	Close Nipple, 1" NPT	1
39	41307*	90° St. Elbow, 1" NPT	1

* Used only on Multi Pro 1100 Vehicle.