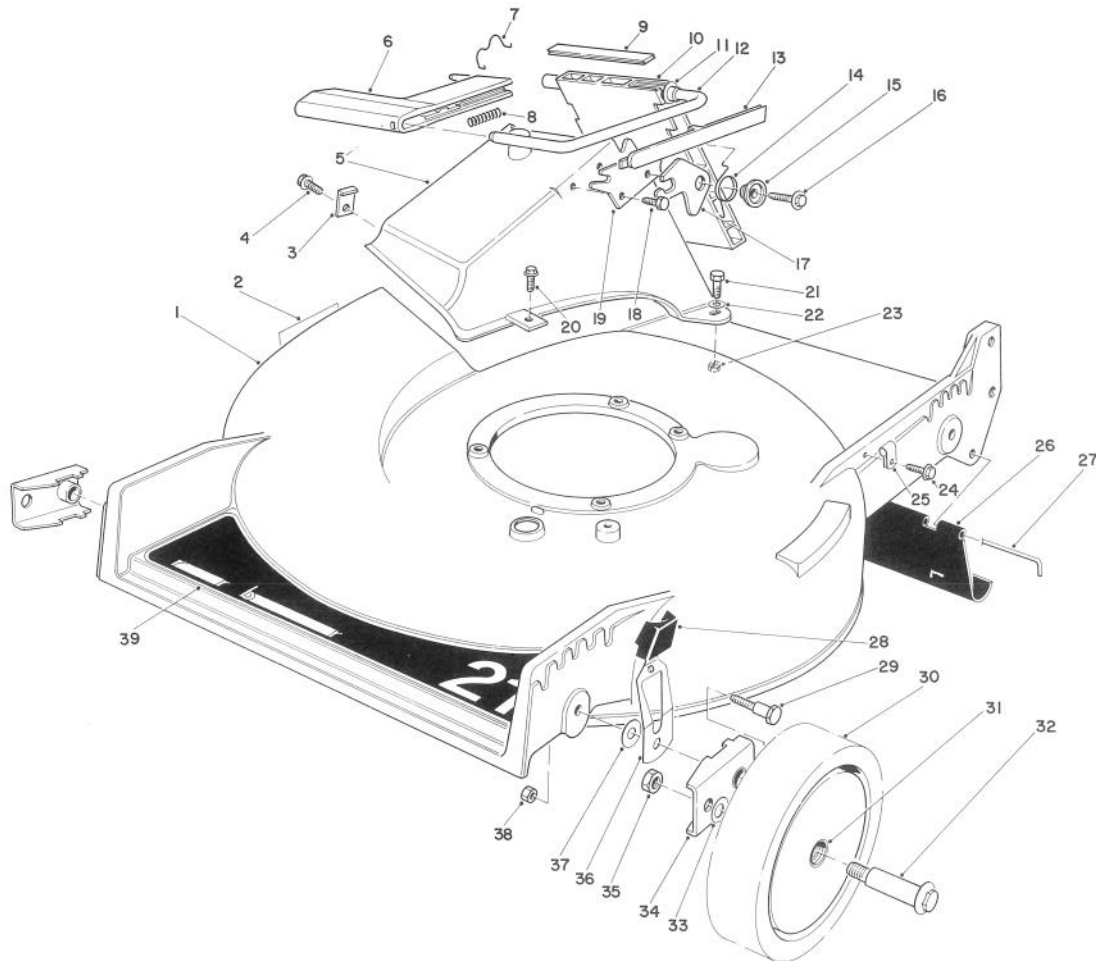




MODEL NO. 20581-3000001 & UP

**PARTS
CATALOG**
21" H.P. REAR BAGGER

HOUSING ASSEMBLY

Ref. No.	Part No.	Description	No. Used
1	11-4069	Housing (Incl. Ref. #2)	1
2	39-5770	Decal — Danger	1
3	47-6540	Clip — Tunnel	1
4	12-3270	Screw — Thread Forming Hex Washer Hd.	1
5	46-3500	Tunnel — Discharge	1
6	46-3520	Handle — Door	1
7	47-5840	Retainer — Door	1
8	46-7060	Spring — Compression	1
9	46-6820	Cover — Door	1
10	46-3510	Door — Discharge	1
11	23-0880	Bushing	1
12	46-3530	Rod — Door	1
13	46-7050	Cover — Handle	1
14	33-4860	Spring — Torsion	1

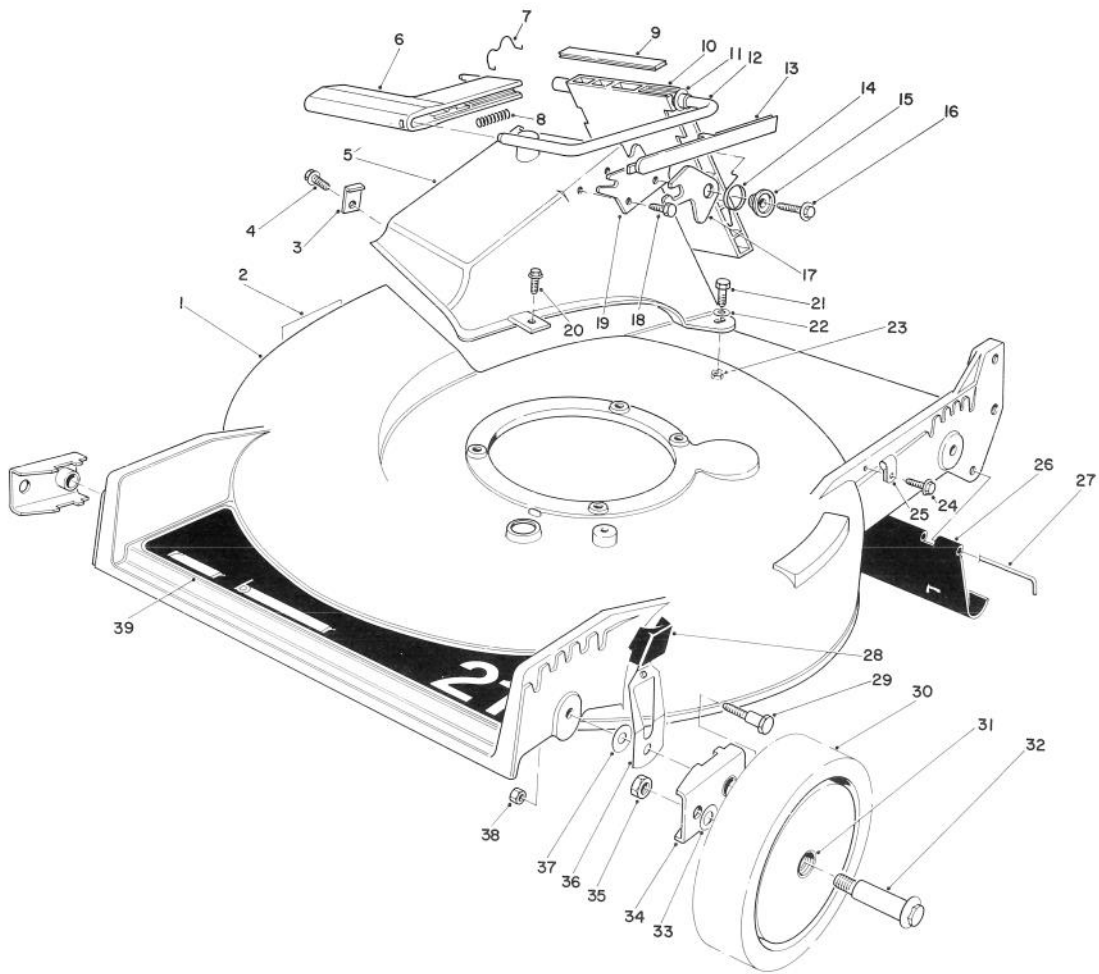
Ref. No.	Part No.	Description	No. Used
15	43-4840	Spacer — Latch	1
16	46-8091	Screw — Self Tapping Hex Washer Hd.	1
17	42-4010	Latch — Safety	1
18	46-8090	Screw — Self Tapping Hex Washer Hd.	1
19	23-1040	Plate — Latch	1
20	11-9760	Screw — Self Tapping	1
21	321-8	Screw — Cap Hex Hd.	2
22	3256-22	Washer — Plain	2
23	3296-42	Nut — Lock	2
24	12-5450	Screw — Thread Forming Hex Washer Hd.	1
25	2412-83	Cable Clamp	1
26	44-0580	Shield — Trailing	1

COPYRIGHT © ALL RIGHTS RESERVED

The Toro Company — 1983

MINNEAPOLIS, MN 55420 — U.S.A.

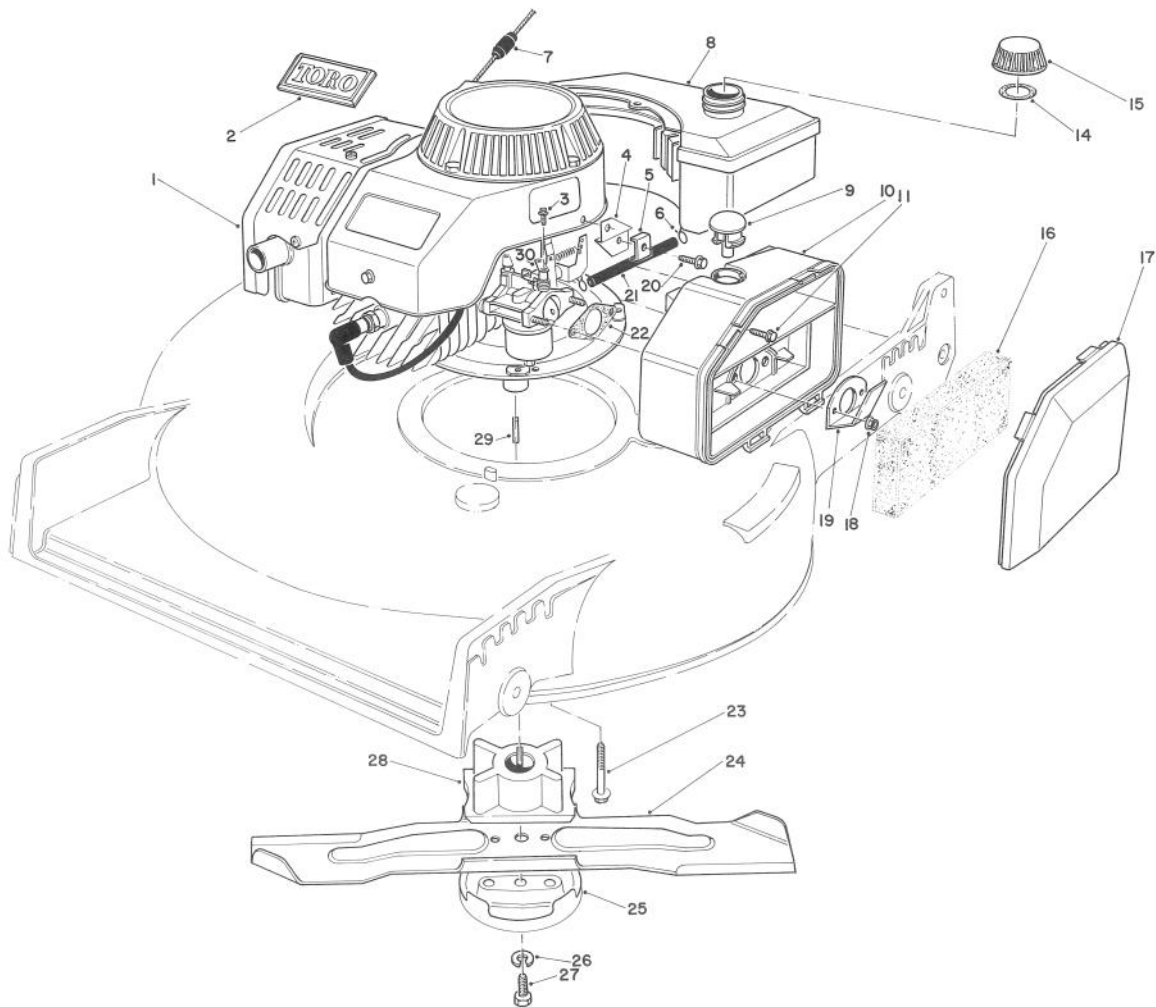
PRICE \$1.00



HOUSING ASSEMBLY (Continued)

Ref. No.	Part No.	Description	No. Used
27	33-3208	Rod — Shield	1
28	25-7740	Knob Arm	4
29	44-5270	Screw — Pivot	4
30	44-0560	Wheel & Tire Assembly (Incl. Ref. #31)	4
31	27-6250	Bushing	8
32	27-6230	Wheel Bolt	4

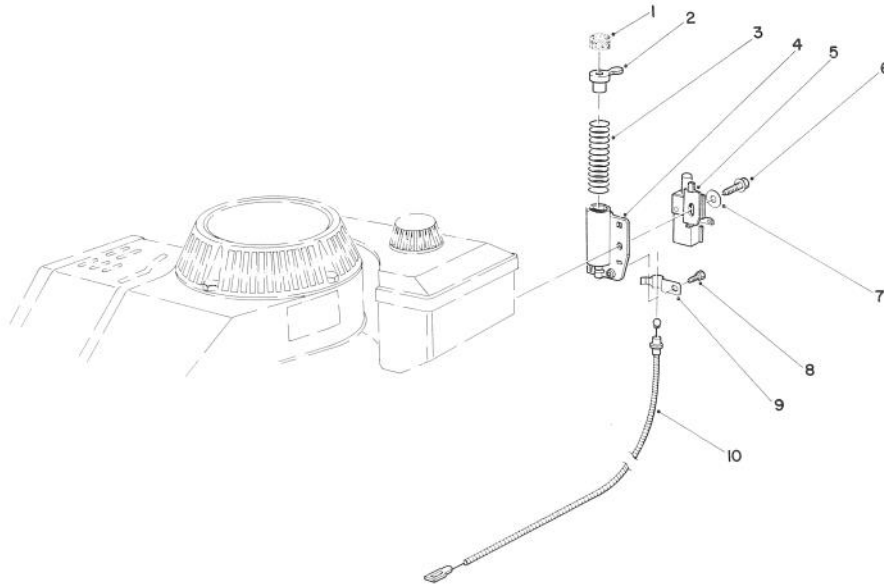
Ref. No.	Part No.	Description	No. Used
33	40-1940	Washer — Wheel Bolt	4
34	47-2940	Pivot Arm Assembly	4
35	32146-6	Nut — Lock	4
36	44-0990	Spring Arm Assembly	4
37	5-4460	Washer — Pivot	4
38	3296-29	Nut — Lock	4
39	44-0450	Decal — 21" Rear Bagger	1



ENGINE ASSEMBLY

Ref. No.	Part No.	Description	No. Used
1	11-5169	Engine (Incl. Ref. #2)	1
2	46-8290	Plate — Toro	1
3	32144-60	Screw — Self Tapping Slotted Hex Washer Hd.	1
4	46-7860	Carrier — Cable	1
5	29-9550	Clamp — Cable	1
6	2412-80	Clamp — Fuel Line	2
7	47-2480	Stop — Rope	1
8	81-0040	Gas Tank Assembly	1
9	81-0080	Plug — Button	1
10	81-0110	Air Cleaner	1
11	46-0071	Screw — Hex Washer Hd.	1
14	20-4620	Gasket — Gas Cap	1
15	42-0681	Gas Cap Assembly (Incl. Ref. #14)	1

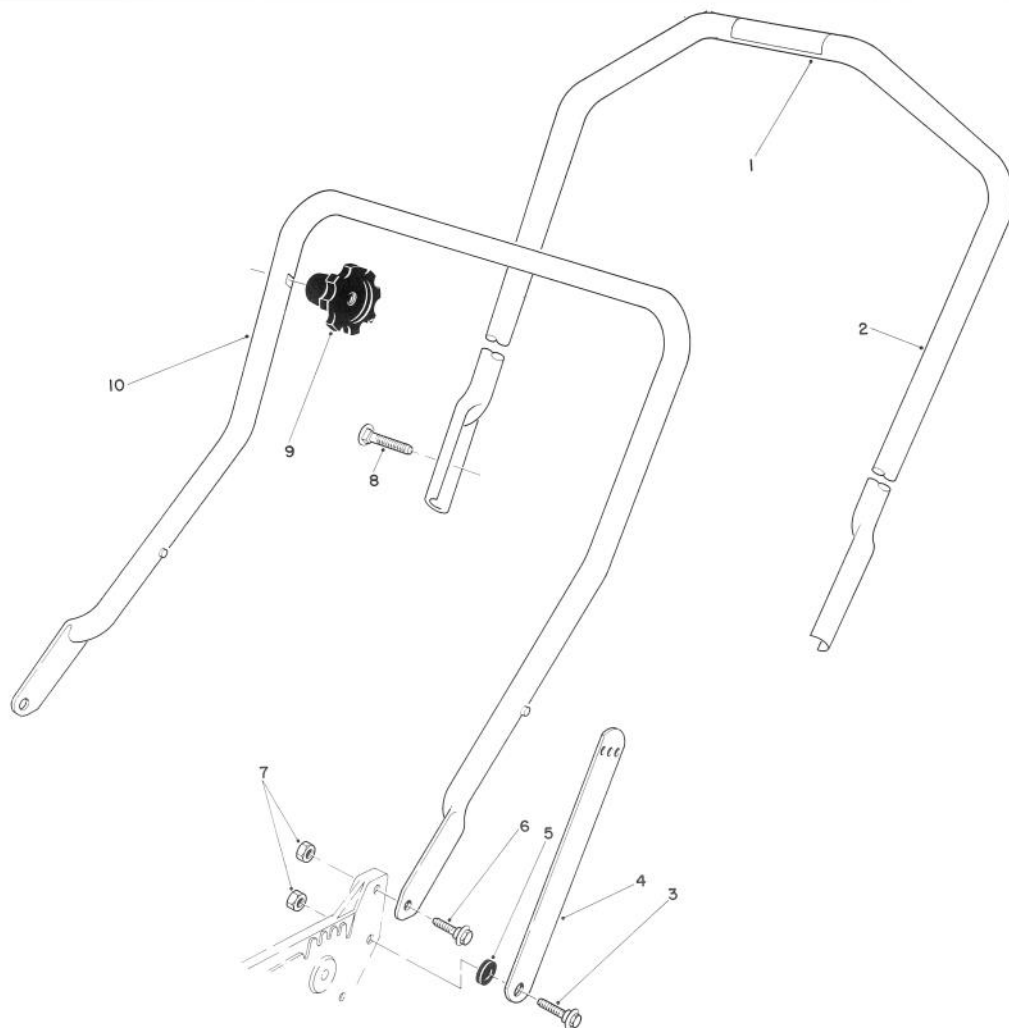
Ref. No.	Part No.	Description	No. Used
16	81-0100	Foam Element — Air Cleaner	1
17	81-0120	Cover — Air Cleaner	1
18	46-0400	Nut — Lock	2
19	81-0140	Deflector	1
20	11-9760	Screw — Self Tapping Hex Washer Hd.	1
21	81-0150	Fuel Line	1
22	81-0090	Gasket — Air Cleaner	1
23	3234-11	Screw — Cap Hex Flange Hd.	4
24	42-1000	Blade 21"	1
25	42-0910	Cup — Anti Scalp	1
26	3253-22	Washer — Lock	1
27	26-0670	Screw — Blade	1
28	46-7810	Retainer Blade	1
29	7-0036	Key — Square	1
30	81-0190	Lever — Choke	1



BRAKE ASSEMBLY

Ref. No.	Part No.	Description	No. Used
1		Pad — Friction	1
2	47-7350	Plunger Assembly (Incl. Ref. #1)	1
3	46-9130	Spring — Compression	1
4	46-5840	Tube	1
5	47-6520	Switch — Push Button	1

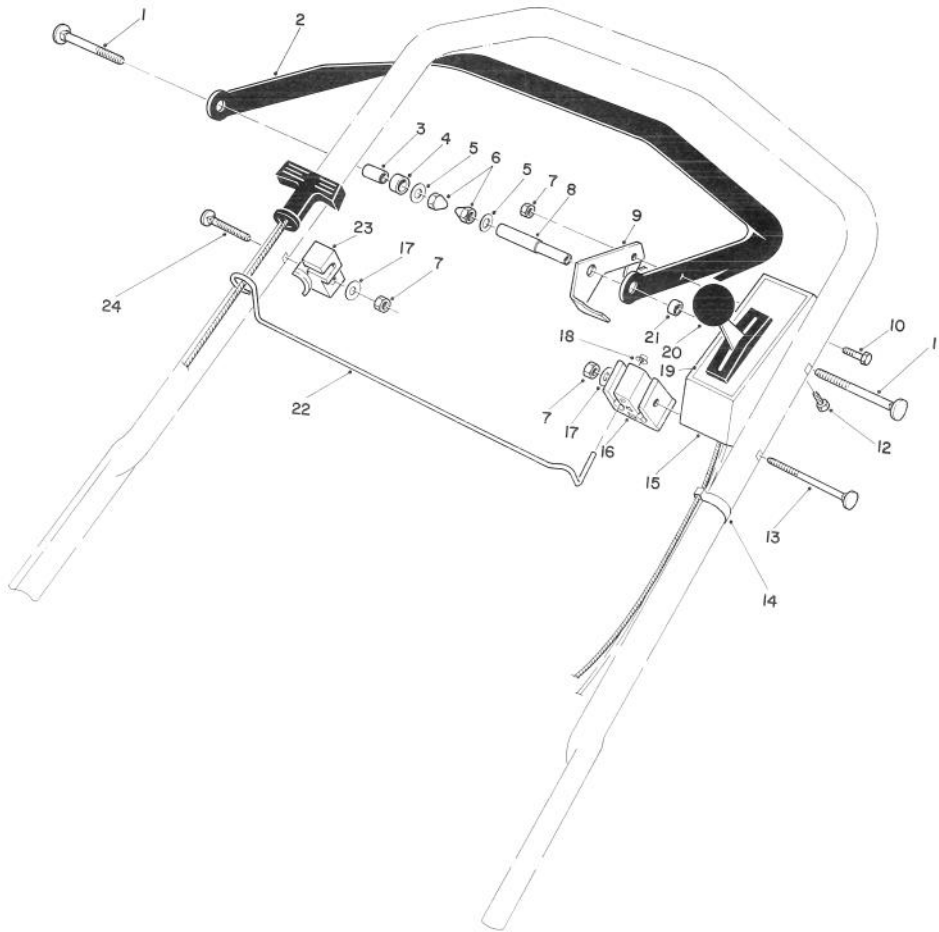
Ref. No.	Part No.	Description	No. Used
6	11-9760	Screw — Self Tapping	1
7	3256-22	Washer — Plain	1
8	12-5450	Screw — Thread Forming Hex Washer Hd.	1
9	46-6530	Cable Clamp	1
10	43-4531	Cable — Brake	1



HANDLE ASSEMBLY

Ref. No.	Part No.	Description	No. Used
1	49-1770	Decal — Danger	1
2	11-5589	Handle — Upper (Incl. Ref. #1)	1
3	27-7210	Screw — Shoulder	2
4	43-1370	Latch — Handle	2
5	3-3287	Spacer — Handle Latch	2

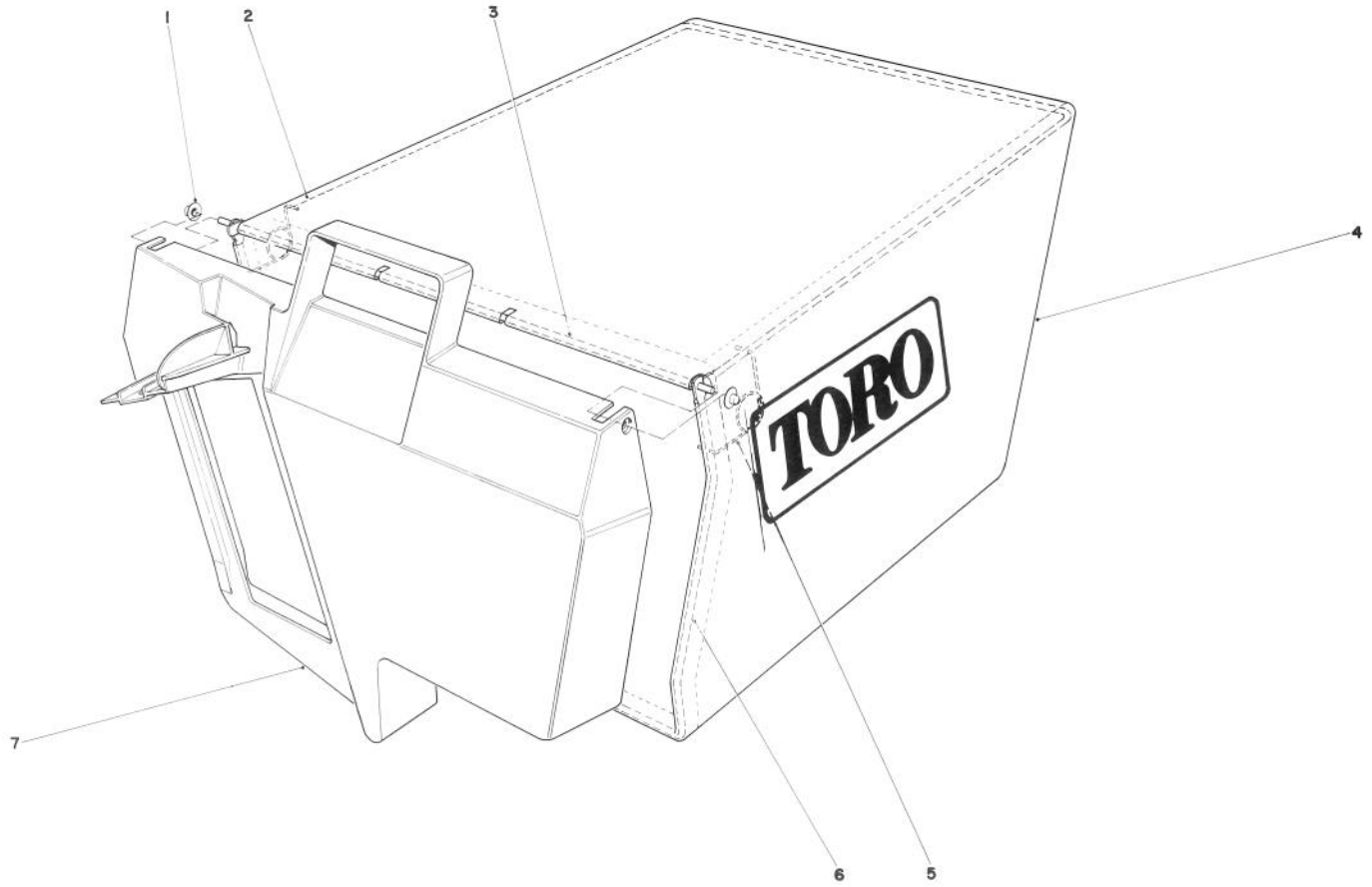
Ref. No.	Part No.	Description	No. Used
6	27-7211	Screw — Shoulder	2
7	3296-47	Nut — Lock	4
8	17-9421	Screw — Handle	2
9	19-4050	Knob — Handle Release	2
10	43-1360	Lower Handle	1



TRACTION CONTROL ASSEMBLY

Ref. No.	Part No.	Description	No. Used
1	17-9421	Screw — Handle	1
2	46-5560	Control Bar Assembly	1
3	46-5580	Bushing — P.M.	1
4	256-276	Spacer	2
5	3256-23	Washer — Plain	2
6	32111-8	Nut — Acorn	2
7	3296-42	Nut — Lock	3
8	46-9380	Spacer — Tube	1
9	46-7950	Lever — Control	1
10	321-5	Capscrew	1
11	17-9423	Screw — Handle	1
12	32104-76	Screw — Self Tapping Acorn Hd.	1

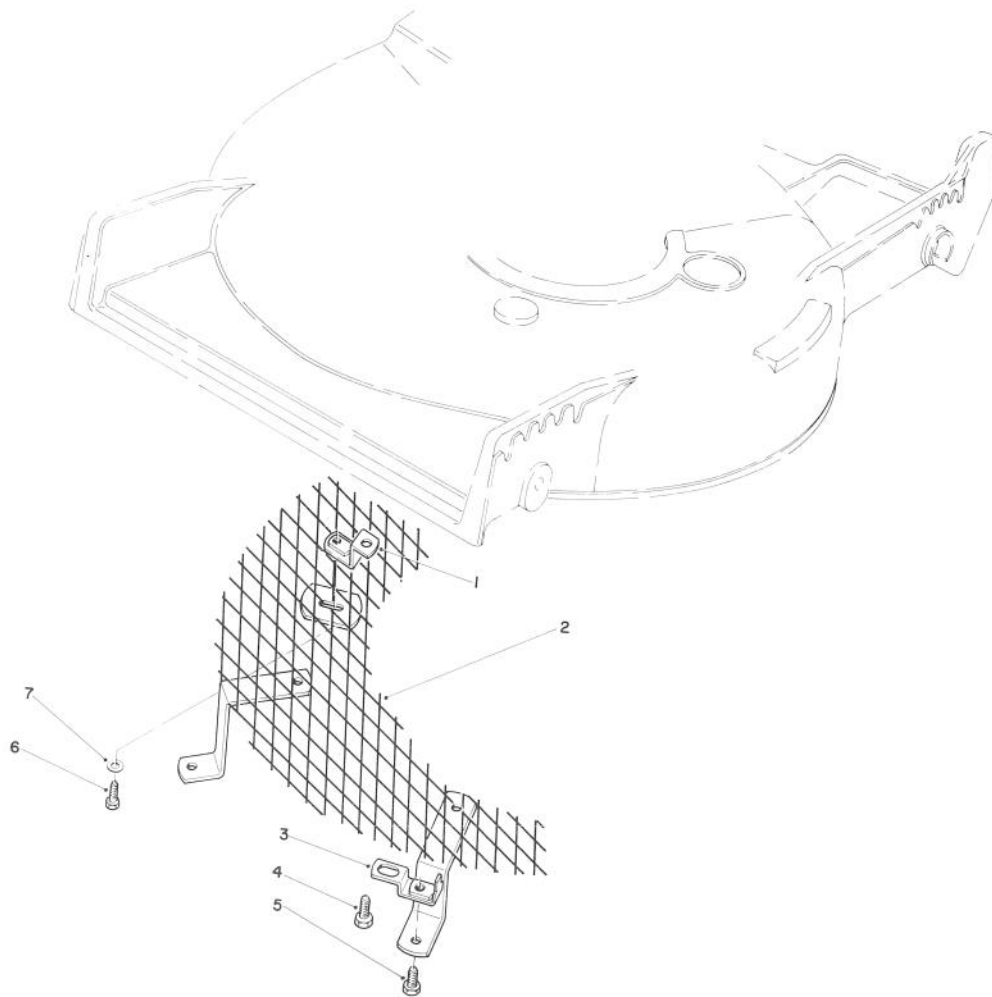
Ref. No.	Part No.	Description	No. Used
13	46-6432	Screw — Handle	1
14	218-465	Clip — Conduit	2
15	11-5159	Cover — Control (Incl. Ref.#19)	1
16	46-6980	Support Cable	1
17	3256-22	Washer — Plain	2
18	3290-337	Push Nut	1
19	46-9140	Decal — Control Cover	1
20	46-8000	Control — Choke	1
21	46-6240	Spacer — Nylon	1
22	46-7970	Rod — Rope	1
23	46-7960	Catch — Rod	1
24	46-6430	Screw — Handle	1



GRASS BAG ASSEMBLY NO. 11-0159

Ref. No.	Part No.	Description	No. Used
1	3290-422	Push Nut	2
2	42-4030	Bag Frame Upper	1
3	33-4820	Hinge Bag Door	1
4	8-2759	Grass Bag	1

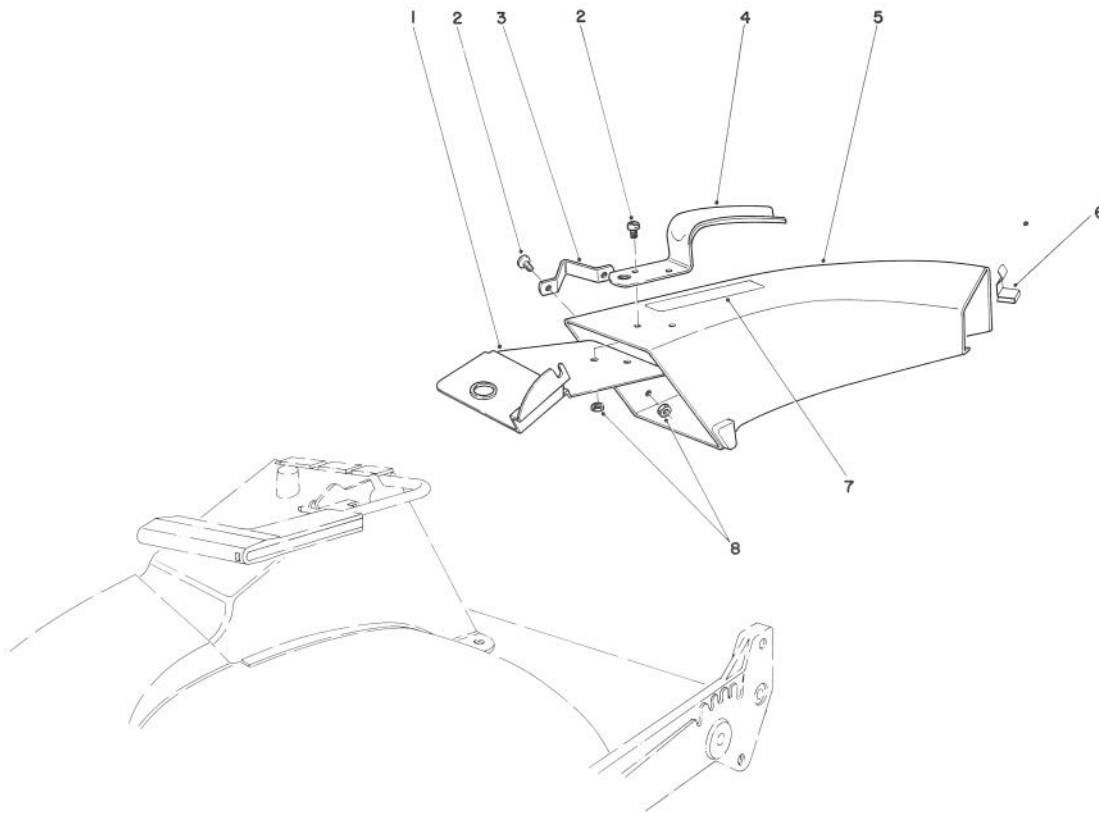
Ref. No.	Part No.	Description	No. Used
5	36-6910	Spring	2
6	43-0030	Frame Bag	1
7	36-1330	Door Grass Bag	1



LEAF SHREDDER KIT MODEL NO. 59157 (Optional)

Ref. No.	Part No.	Description	No. Used
1	47-6260	Bracket	1
2	47-6230	Screen	1
3	46-4880	Mounting Bracket	2
4	32144-11	Screw — Self Tapping	2

Ref. No.	Part No.	Description	Ref. No.
5	321-3	Capscrew, Hex Hd.	2
6	321-5	Capscrew, Hex Hd.	1
7	3256-1	Washer	1

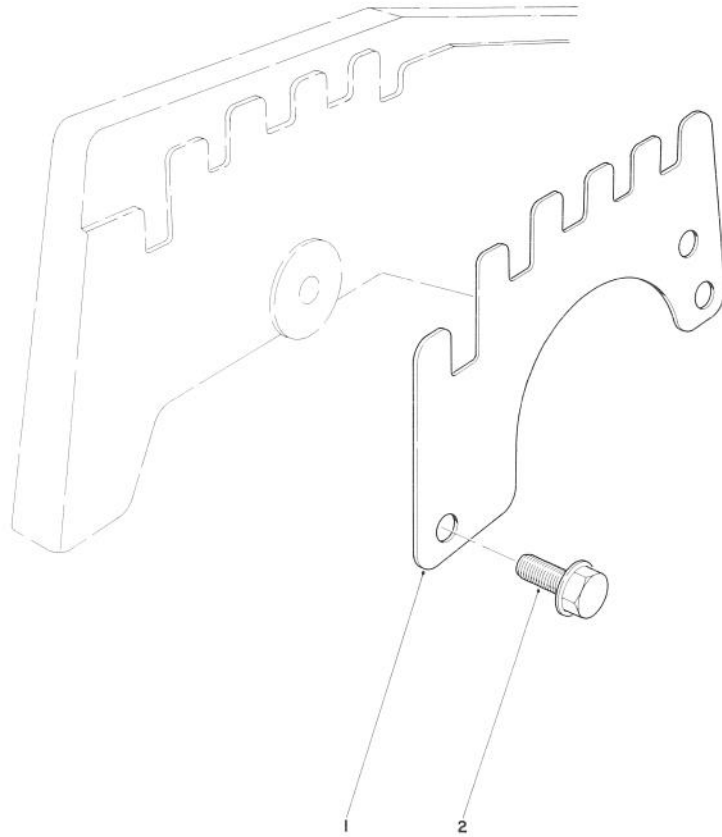


SIDE DISCHARGE CHUTE MODEL NO. 59108 (Optional)

Ref. No.	Part No.	Description	No. Used
1	44-2330	Plate — Discharge Chute	1
2	3251-3	Screw	4
3	46-6580	Bracket	1
4	42-1340	Handle — Grass Chute	1

Ref. No.	Part No.	Description	No. Used
5†		Chute Assembly	1
6	3290-439	Clip	1
7	39-9120	Decal — Caution	1
8	3296-12	Locknut	4

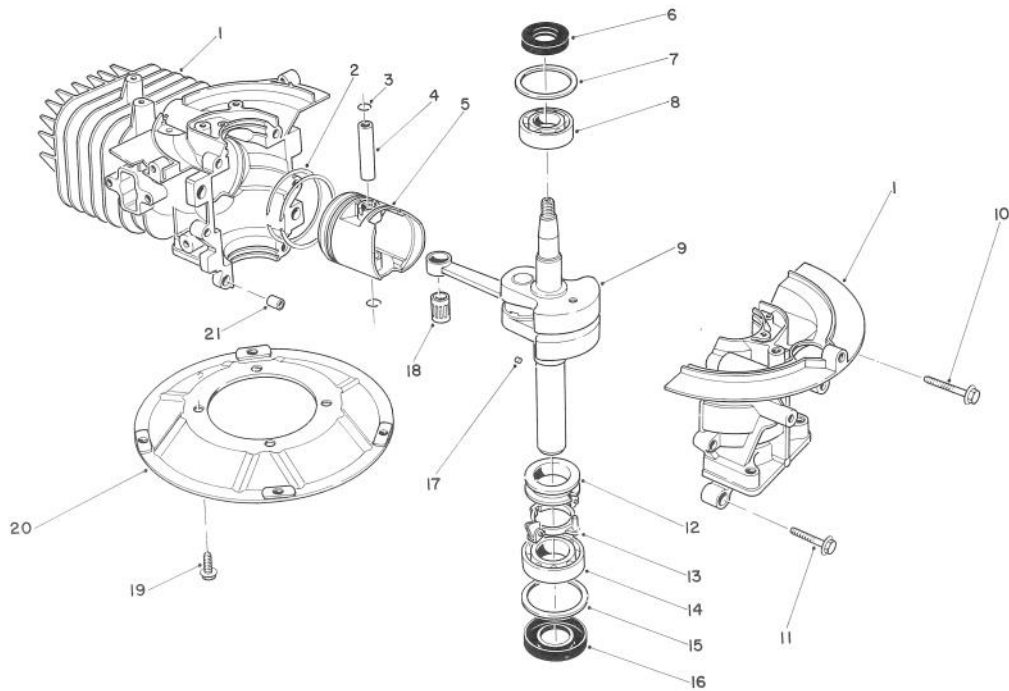
†Order Chute Assembly Model No. 59108.



WEAR PLATE KIT NO. 44-5530 (Optional)

Ref. No.	Part No.	Description	No. Used
1	43-5050	Plate — Wear	4

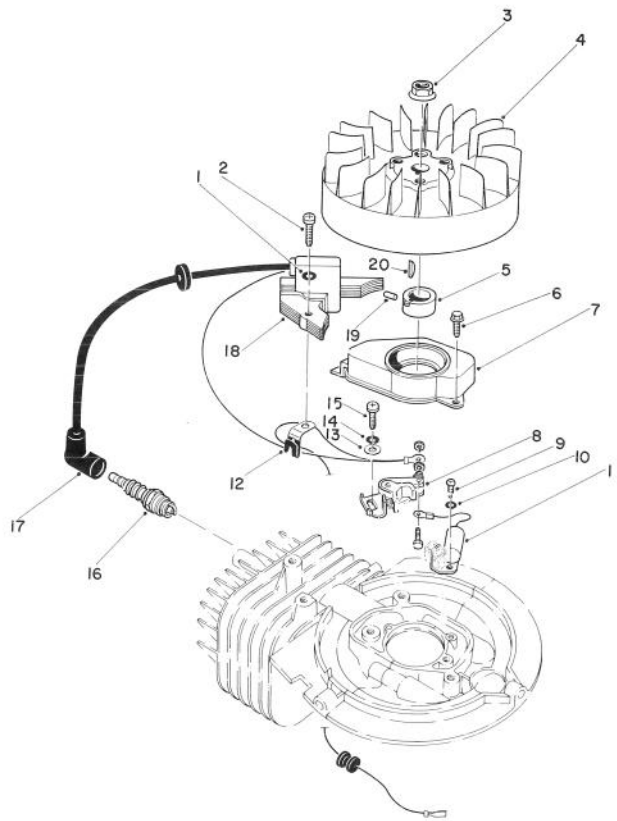
Ref. No.	Part No.	Description	No. Used
2	12-3270	Screw — Thread Forming	8



CRANKSHAFT ASSEMBLY

Ref. No.	Part No.	Description	No. Used
1	81-0510	Crankcase Assembly	1
2	81-0590	Ring Set	1
3	81-0620	Circlip	2
4	81-0600	Pin — Piston 12 mm dia.	1
5	81-0580	Piston — 58 mm	1
6	81-0720	Oil Seal — Upper	1
7	81-0710	Thrust Washer — Upper	1
8	81-0690	Bearing — Upper — 20mm	1
9	81-1550	Crankshaft Assembly	1
10	81-0550	Bolt (35mm Lg.)	1
11	81-0540	Bolt (30mm Lg.)	2

Ref. No.	Part No.	Description	No. Used
12	81-0770	Spacer — Governor	1
13	81-0750	Bracket — Arm Governor	1
14	81-0700	Bearing — Lower 25mm	1
15	81-0730	Thrust Washer — Lower	1
16	81-0740	Oil Seal — Lower	1
17	81-0760	Pin — 3mm dia. x 5mm long	1
18	81-0610	Bearing — Wrist Pin	1
19	81-0570	Bolt	4
20	81-0560	Plate — Mounting	1
21	81-0520	Pin — Crankcase Dowel	2

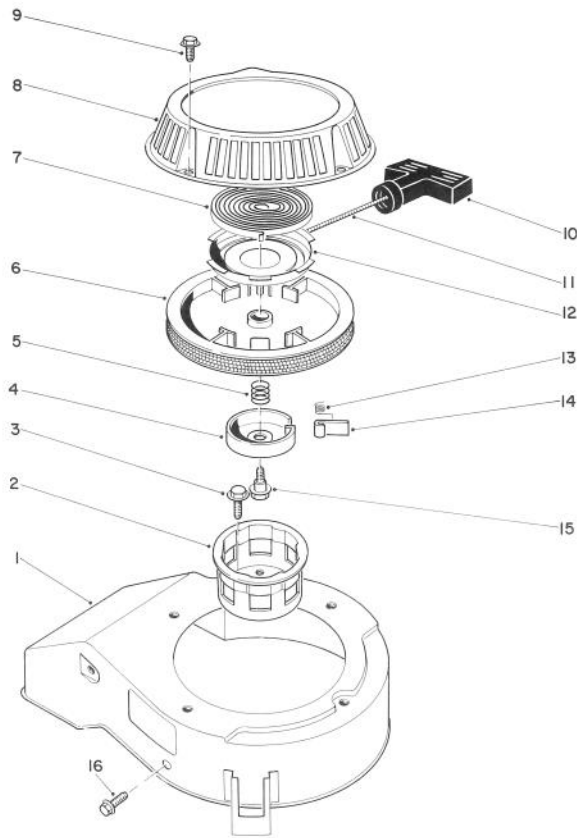


FLYWHEEL & MAGNETO ASSEMBLY

Ref. No.	Part No.	Description	No. Used
1	81-1450	Lockwasher	1
2	81-1440	Screw	1
3	81-1330	Nut	1
4	81-1310	Flywheel — Magneto	1
5	81-1460	Cam — Contact Point	1
6	81-1350	Bolt — Self Tapping	1
7	81-1340	Cover — Contact Point	1
8	81-1360	Point Assembly — Contact	1
9	81-1410	Screw	1
10	81-1420	Lockwasher	1
11	81-1400	Condenser	1

Ref. No.	Part No.	Description	No. Used
12	81-1480	Clamp	1
13	81-1390	Washer — Plain	1
14	81-1380	Lockwasher	1
15	81-1370	Screw — Phillips Hd.	1
16	81-0180	Spark Plug	1
17	81-1500	Cap — Spark Plug	1
18	81-1430	Coil Assembly — Ignition	1
19	81-0760	Pin	1
20	81-1320	Key — Aluminum Woodruff	1
*	81-1540	Tune Up Kit (Incl. Ref. #8 & 11)	1
*	41-7650	Puller — Flywheel	1
*	41-7900	Timing Tester	1

*Not Illustrated

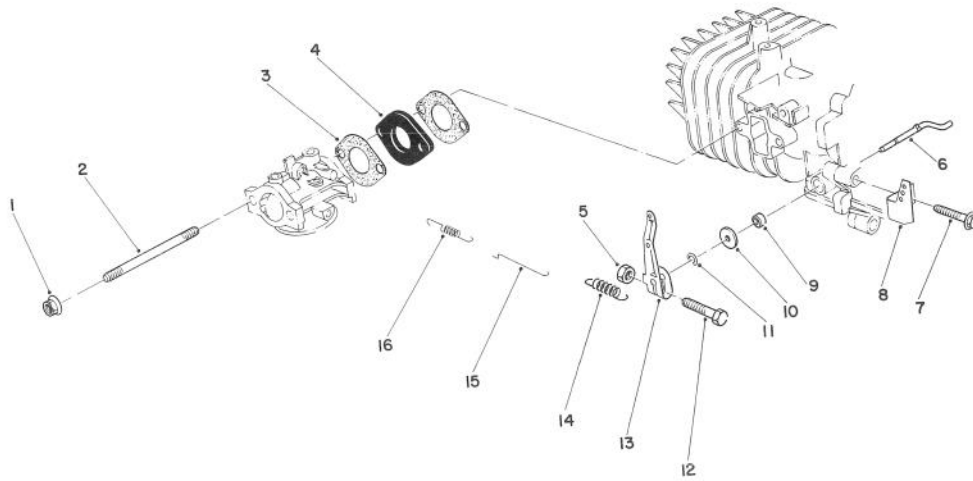


RECOIL ASSEMBLY

Ref. No.	Part No.	Description	No. Used
1	81-1160	Cover — Cooling Fan	1
2	81-1290	Cup — Starter Pulley	1
3	81-1300	Bolt	3
4	81-1250	Retainer	1
5	81-1240	Spring — Compression	1
6	81-1210	Reel — Rope Pulley	1
7	81-1200	Spring — Recoil	1
8	81-1190	Case	1
9	81-1280	Bolt	4

Ref. No.	Part No.	Description	No. Used
10	81-1630	Handle — Recoil	1
11	81-1270	Rope	1
12	81-1640	Retainer Cup — Recoil Spring	1
13	81-1220	Spring — Dog	2
14	81-1230	Dog	2
15	81-1260	Bolt	1
16	81-1170	Bolt	3
*	81-1180	Starter Assembly (Incl. Ref. #4-15)	1

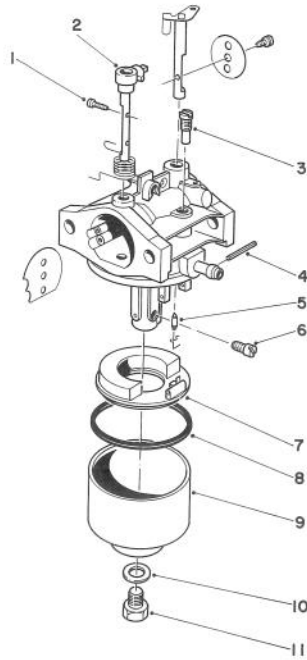
*Not Illustrated



GOVERNOR ASSEMBLY

Ref. No.	Part No.	Description	No. Used
1	46-0400	Nut	2
2	81-0800	Stud-Bolt — Carburetor	2
3	81-0780	Gasket — Carburetor	2
4	81-0790	Insulator — Carburetor	1
5	81-0900	Nut	1
6	81-0840	Shaft — Governor	1
7	81-0530	Bolt (25mm Lg.)	3
8	81-0930	Bracket — Governor Spring	1

Ref. No.	Part No.	Description	No. Used
9	81-0850	Oil Seal	1
10	81-0860	Washer	1
11	81-0870	E-Ring	1
12	81-0890	Bolt	1
13	81-0880	Lever — Throttle Control	1
14	81-0920	Spring	1
15	81-0910	Rod — Carburetor	1
16	81-0940	Spring (L-31) 3000 RPM	1

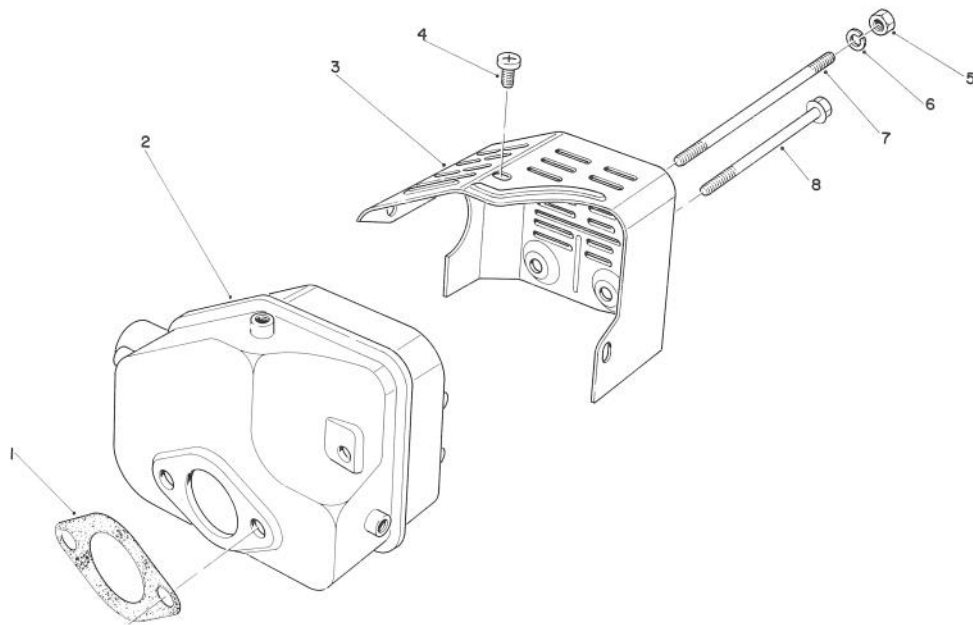


CARBURETOR ASSEMBLY

Ref. No.	Part No.	Description	No. Used
1	81-0990	Screw	2
2	81-1650	Shaft — Choke	1
3	81-1030	Jet — Pilot (40)	1
4	81-0980	Pin	1
5	81-1600	Needle Valve & Spring Wire	1
6	81-1040	Jet — Main (80)	1
*	81-1050	Jet — Main (77.5) High Altitude (above 6,000 ft.) (Optional)	1

Ref. No.	Part No.	Description	No. Used
7	81-0970	Float	1
8	81-1010	Gasket	1
9	81-1610	Float — Bowl	1
10	81-1020	Gasket — Bowl Screw	1
11	81-1000	Bolt	1
*	81-1620	Carburetor Kit (Incl. Ref. #3, 5-6, 8 & 10)	1
*	81-0960	Carburetor Assy. Complete	1

*Not Illustrated



MUFFLER ASSEMBLY

Ref. No.	Part No.	Description	No. Used
1	81-1080	Gasket — Muffler	1
2	81-1090	Muffler	1
3	81-1130	Cover — Muffler	1
4	81-1140	Screw — Phillips Hd.	3
5	81-1110	Nut	2

Ref. No.	Part No.	Description	No. Used
6	81-1120	Washer — Lock	2
7	81-1100	Bolt	2
8	81-1150	Bolt — Self Tapping	1
*	81-0200	Spark Arrester	1

*Not Illustrated