



MODEL NO. 41565

SET-UP AND
PARTS LIST

HOSE REEL KIT for the Multi-Pro® 5500

Refer to the illustrated Parts List for the details of parts used in assembling the Hose Reel Kit.

NOTE: If this Hose Reel Kit is being used on a Multi Pro 5500 model 41564 that is equipped with an Enclosed Boom System model 41355 then a Pin Receiver Adapter Kit part NO. 95-2425 must be obtained through an authorized TORO Dealer.

MOUNTING HOLES:

1. Disconnect negative battery terminal from the Battery.
2. If assembling the Hose Reel onto a Multi Pro 5500 with a serial number below 41564-70001, three (3) mounting holes must be drilled. (See Step 3) For vehicle with serial number 41564-70001 and above proceed to the Frame Assembly section of this manual.
3. Drill one (1) 7/16" dia. hole in the tank saddle and two (2) 7/16" dia. holes in the hydraulic tank mount. See FIG 1.

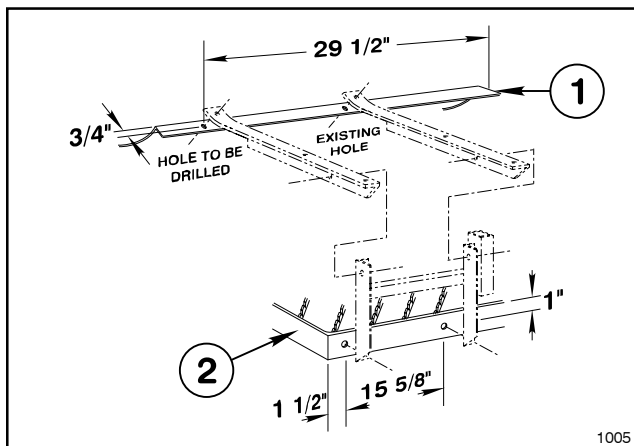


FIG. 1

1. Front of Tank Saddle

2. Hydraulic Tank Mount

FRAME ASSEMBLY:

NOTE: Refer to the parts list illustration on page 3 for additional assembly assistance.

1. Install the Mounting Legs Assembly onto the Hydraulic Reservoir Mount using two (2) 3/8" cap screws, hex nuts and flat washers. (Refer to Fig. 2 on page 2) Tighten the fasteners to "just snug" to permit any necessary adjustments.
2. Install the two (2) Mounting Arms to the Spray Tank Saddle and the Mounting Legs Assembly using four (4) 3/8" cap screws, hex nuts, and flat washers. Tighten all six (6) 3/8" cap screws at this time.
3. Install the Hose Reel Assembly onto the two (2) Mounting Arms, using the four 3/8 x 1" cap screws, flat washers and lock nuts. Attach the Hose Clip under the right Mounting Arm before tightening the Bolts. See FIG. 2.
4. Crimp the 3/8" ring terminal to the NEGATIVE (-) wire from the Reel Motor. Ground the NEGATIVE (-) wire to the left-rear screw used to mount the Hose Reel Assembly to the frame.
5. Tighten all fasteners securely in order to insure a solid, rigid installation.
6. Attach the Electrical Box assembly to the left side of the Hose Reel with two (2) 5/16" x 3/4" cap screws and lock nuts.
7. Remove the screws holding the Cover to the Electric Box, to gain access to the electrical components mounted to the inside of the Box Cover.
8. Feed the POSITIVE (+) wire from the Reel Motor through the wire bushing in bottom of the Electric Box. Crimp the #10 ring terminal to the POSITIVE (+) wire.

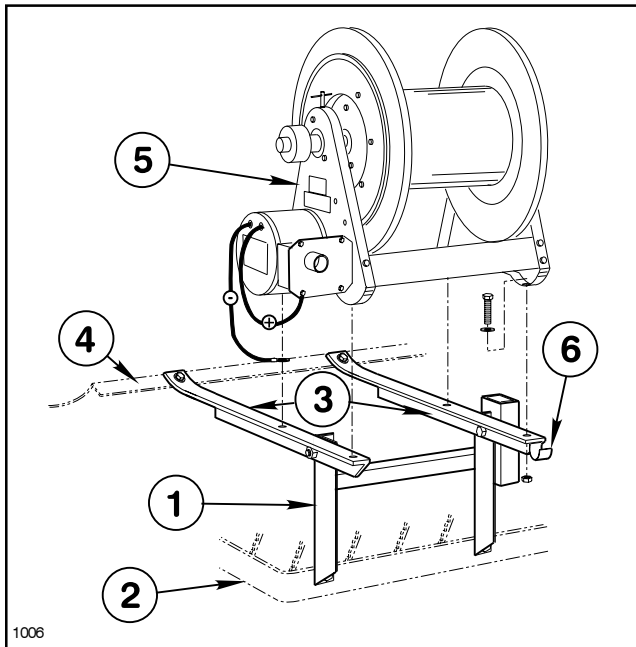


FIG. 2

- | | |
|------------------------------|----------------------|
| 1. Mounting Legs Ass'y | 4. Spray Tank Saddle |
| 2. Hydraulic Reservoir Mount | 5. Hose Reel Ass'y |
| 3. Mounting Arms | 6. Hose Clip |

9. Connect the POSITIVE (+) wire to the open terminal on the circuit breaker, which is mounted on the Box Cover.

10. Apply a "bead" of silicone to the four flanges of the Electric Box. Replace the Box Cover, using four #10 x 1/2" machine screws, flat washers and hex nuts. Apply additional silicone to create a tight seal.

11. Connect the Power wire to the terminal on the Starter Solenoid (where the RED Battery wire is connected) on the engine.

12. Reconnect the negative battery terminal.

CONNECTING THE SPRAY HOSE:

NOTE: First apply teflon tape to all male threads.

1. Hand thread the male hose connector into the connecting tube on the Reel Shaft. See FIG. 3.

2. Using a wrench, firmly hold onto the connecting tube, while tightening the hose connector.

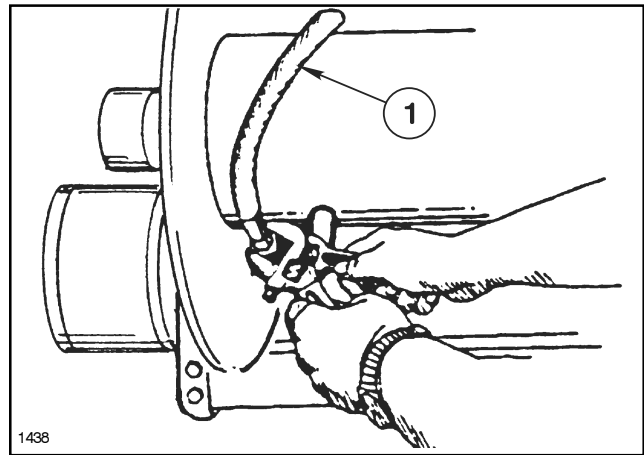


FIG. 3
1. Spray Hose

CONNECTING THE SUPPLY HOSE:

1. Install the hose barb into the Swivel Assembly as shown in FIG. 4 and secure the Supply Hose with a hose clamp.

2. Connect the other end of the Supply Hose as shown in the Parts List illustration on page 4.

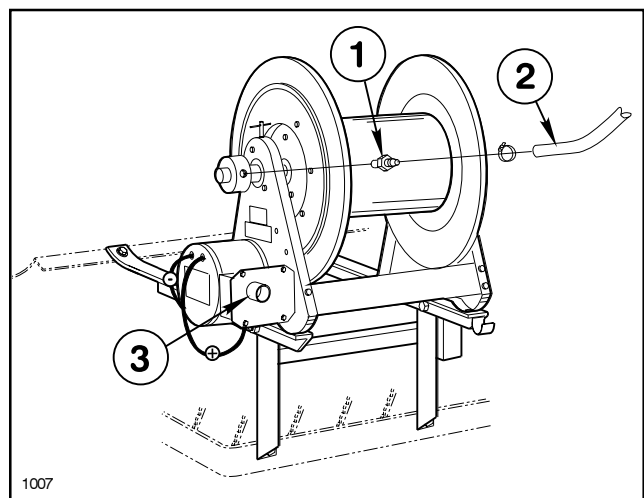
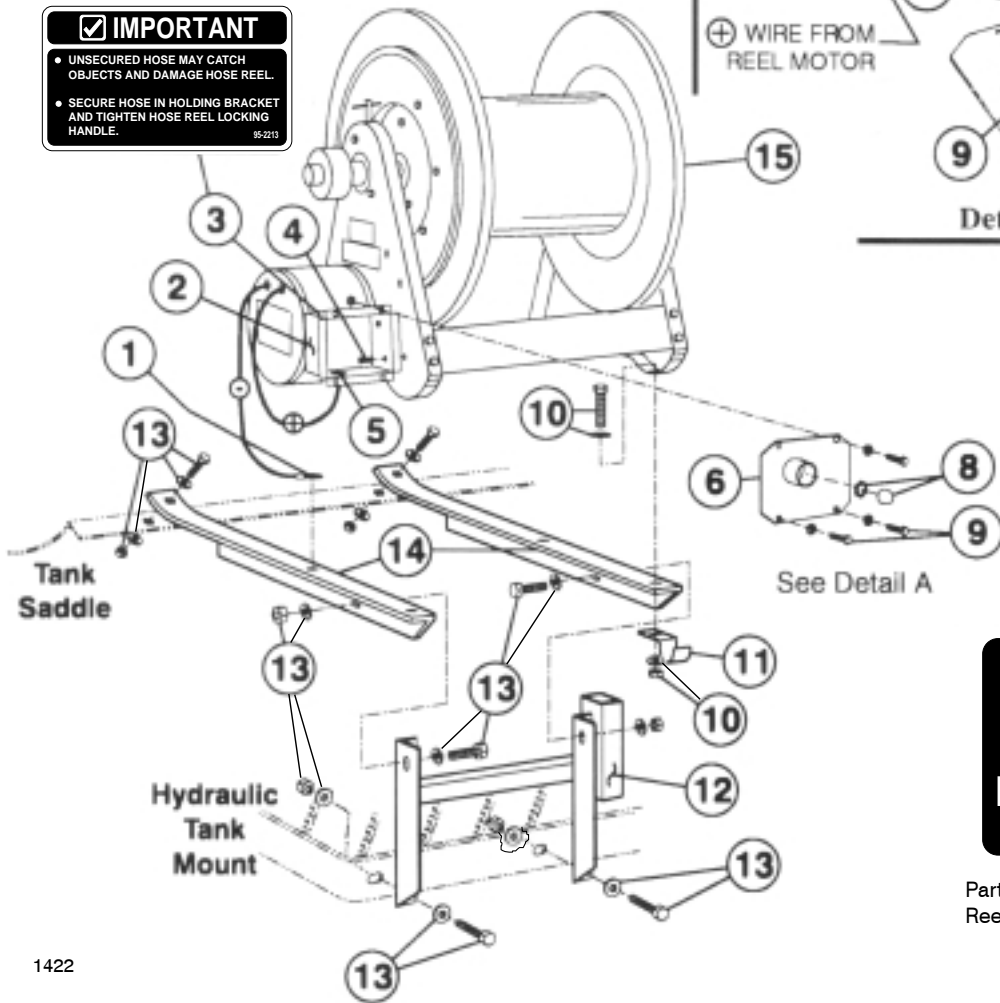
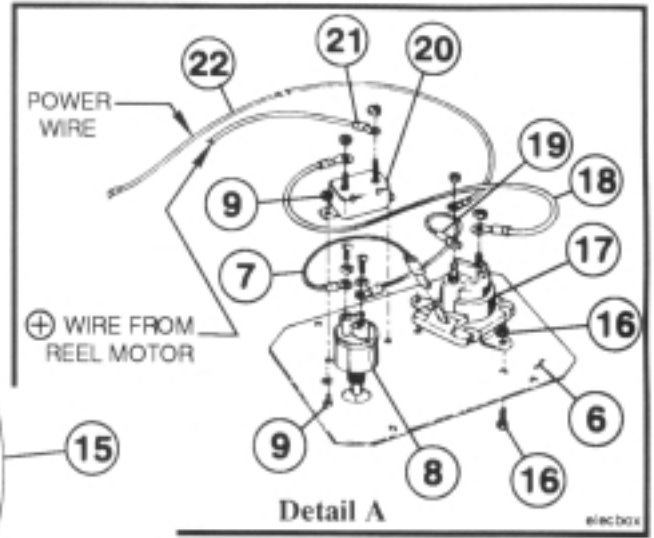


FIG. 4

- | | |
|----------------|----------------|
| 1. Hose Barb | 2. Supply Hose |
| 3. Reel Switch | |

IMPORTANT

- UNSECURED HOSE MAY CATCH OBJECTS AND DAMAGE HOSE REEL.
- SECURE HOSE IN HOLDING BRACKET AND TIGHTEN HOSE REEL LOCKING HANDLE.



**HOSE REEL
REWIND
PUSH TO REWIND**

87-0540

Part No. 87-0540; Located under Reel Switch on Electric Box

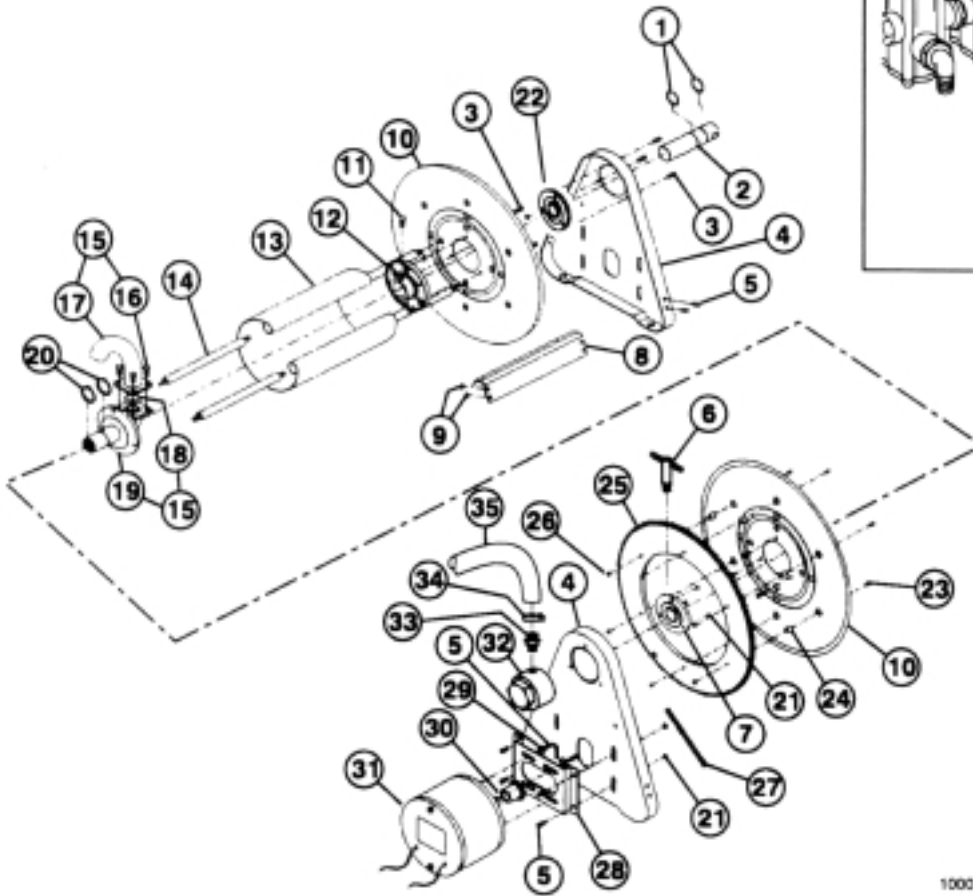
1422

ELECTRIC BOX AND BRACKET ASS'Y

#	Part No.	Description	Qty
1	42313	Insulated 3/8" Ring Terminal	1
2	92-3636	Electric Box Ass'y	1
3	95-2213	Secure Hose Decal	1
4	322-3	Cap Screw	2
	3217-6	Hex Nut	2
5	42205	Wire Bushing	1
6	42440	Cover Plate Ass'y	1
7	42208	Wire Ass'y - Switch to Solenoid	1
8	42202	Momentary Switch	1
9	3250-31	Hex Hd. Mach. Screw, #10 NF x 1-1/2"	6
	3256-14	Flat Washer, #10 SAE	6
	3219-14	Hex Nut, #10 NF	6
10	323-6	Hex Hd. Bolt, 3/8 -16 x 1 Grade 5	4
	3256-4	Flat Washer, 3/8	8
	32153-2	Hex Nut, 3/8-16	4
11	95-2212	Hose Clip	1

#	Part No.	Description	Qty
12	95-2183	Mounting Legs	1
13	323-6	Hex Hd. Bolt, 3/8 -16 x 1 Grade 5	6
	3256-4	Flat Washer, 3/8	12
	32153-2	Hex Nut, 3/8-16	6
14	95-2184	Mounting Arm	2
15	42200	Hose Reel	1
*	42204	Hose Ass'y, 150'	1
16	32104-95	Hex Washer Hd. Screw, 1/4 NC x 5/8"	2
	3217-5	Hex Nut, 1/4 NC	2
17	41019	Solenoid Ass'y	1
18	42206	Wire Ass'y - Solenoid to Breaker	1
19	42207	Wire Ass'y - Solenoid to Switch	1
20	42201	Circuit Breaker	1
21	42312	# 10 Insulated Ring Terminal	1
22	95-2211	Wire Ass'y - Power	1

* Not Illustrated



1000

HOSE REEL & BALL VALVE

Ref.	Part No.	Description	Qty
1	42346	Snap Ring, 1-1/4"	4
2	92-8254	Support Shaft	
3	42337	Machine Screw, 1/4-20 x 5/8"	12
4	42339	Frame - Side	2
5	322-1	HHCS, 5/16 NC x 1/2"	8
6	42338	Lock Handle Assembly	1
7	42340	Bearing & Brake Collar Assembly	2
8	42348	Brace, Cross	2
9	32153-3	Lock Nut, 5/16 NC	16
10	42341	Flange - Spool	2
11	3247-3	Hex Skt. Hd Set Scr., 3/8 NC x 1/2	2
12	92-8258	Bearing - Hub	1
13	92-8259	Spacer - Spool	1
14	42345	Tie Rod	4
15	92-8253	Inlet Assembly	1
16	322-3	HHCS, 5/16 NC x 3/4"	4
17	92-8256	Outlet Tube, 1/2"	1
18	92-8257	O-Ring	1
19	92-8255	Inlet Casting Flange	1
20	42346	1-1/4" Snap Ring	4

Ref.	Part No.	Description	Qty
21	32153-4	Hex Whiz Nut, 1/4 NC	12
22	42349	Hub Sheave, Bearing	1
23	42350	10-32 x 7/8" Cap Screw	6
24	42351	Spacer, Gear	6
25	42352	Gear, Spool	1
26	3219-14	#10-32 Flange Nut	6
27	42357	Chain	1
28	42354	Bracket, Motor	1
29	3256-3	Flat Washer, 5/16"	4
30	42355	Gear, Motor, 1/2" Barb	1
31	42356	Motor, Drive	1
32	42353	3/4" Swivel Assembly	1
33	41313	Hose Barb, 1/2 MPT x 3/4 HB	2
34	92-0045	Hose Clamp	2
35	42534	Supply Hose, 3/4" I.D. x 66"	1
36	41306	Red. Bushing, 1" MPT x 1/2" FPT	1
37	40020	Ball Valve, 11" NPT	1
38	41304	Close Nipple, NPT	1