



Deck Lift Link Kit
Z Master® Riding Mower
Model No. 163-4094

Installation Instructions

Installation

Loose Parts

Use the chart below to verify that all parts have been shipped.

Procedure	Description	Qty.	Use
1	No parts required	–	Prepare the machine.
2	No parts required	–	Remove the original hardware.
3	Nut Spacer Deck-lift link Shoulder bolt Flange bolt Bushing	8 4 4 4 4 4	Install deck-lift link.
4	No parts required	–	Complete the installation.

Note: Determine the left and right sides of the machine from the normal operating position.

1

Preparing the Machine

No Parts Required

Procedure

1. Park the machine on a level surface.
2. Disengage the blade-control switch.
3. Move the motion-control levers outward to the NEUTRAL-LOCK position.
4. Engage the parking brake.
5. Shut off the engine and remove the key.
6. Disconnect the negative battery cable.

7. Support the mower deck using 4x4 blocks of wood.
8. Remove the height-of-cut pin from the height-of-cut bracket.

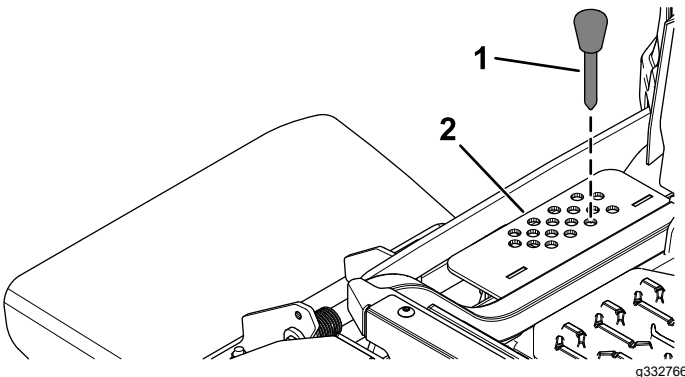


Figure 1

1. Height-of-cut pin
2. Height-of-cut bracket



2

Removing the Original Hardware

No Parts Required

Procedure

Remove the 4 original deck-lift links and fasteners.

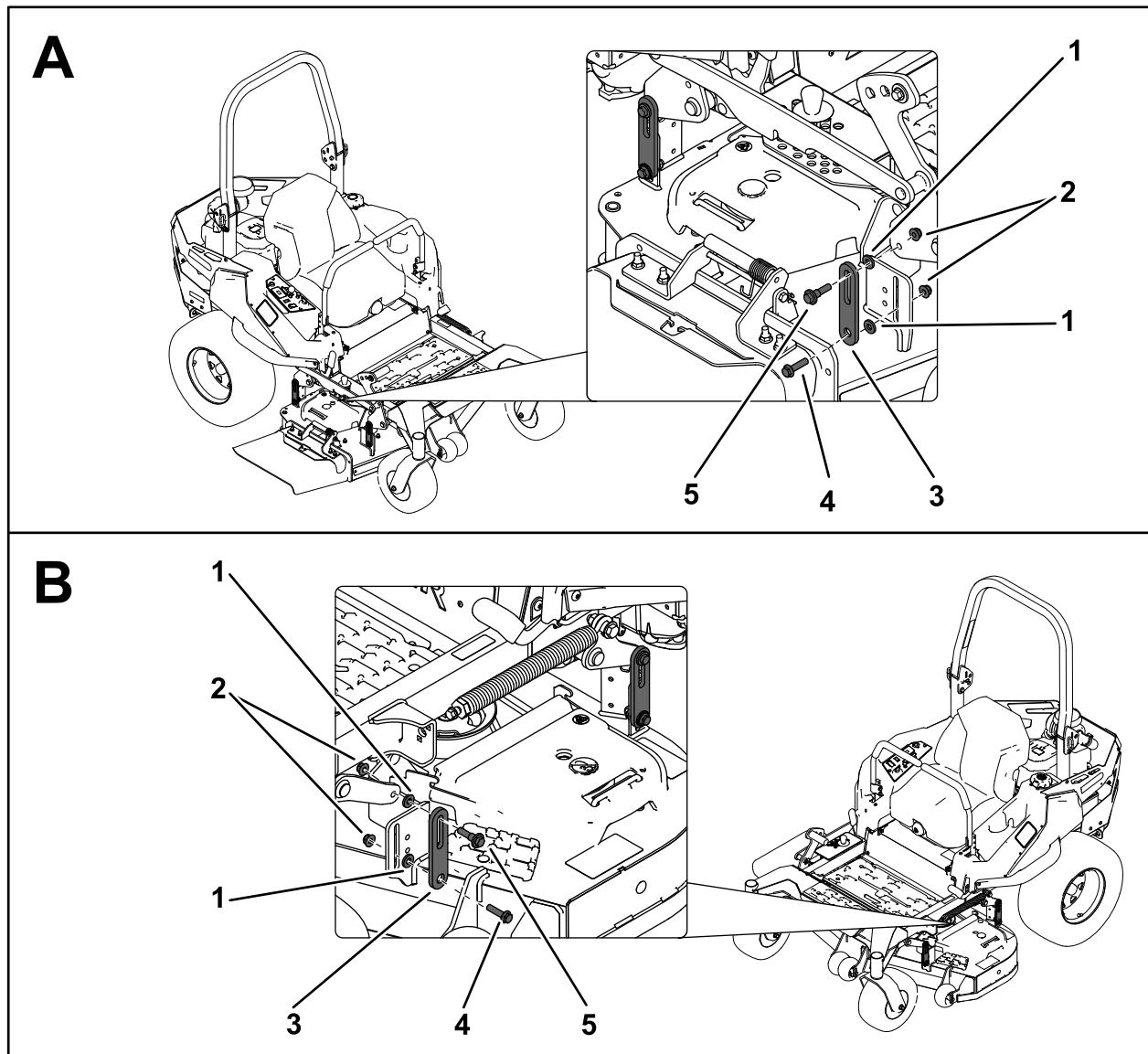


Figure 2

g525023

- | | |
|-------------------|------------------|
| 1. Spacer | 4. Flange bolt |
| 2. Nut | 5. Shoulder bolt |
| 3. Deck-lift link | |

3

Installing the Deck-lift Link

Parts needed for this procedure:

8	Nut
4	Spacer
4	Deck-lift link
4	Shoulder bolt
4	Flange bolt
4	Bushing

Procedure

Install 4 deck-lift links with 4 shoulder bolts, 4 flange bolts, 4 bushings, 4 spacers, and 8 nuts in the locations shown.

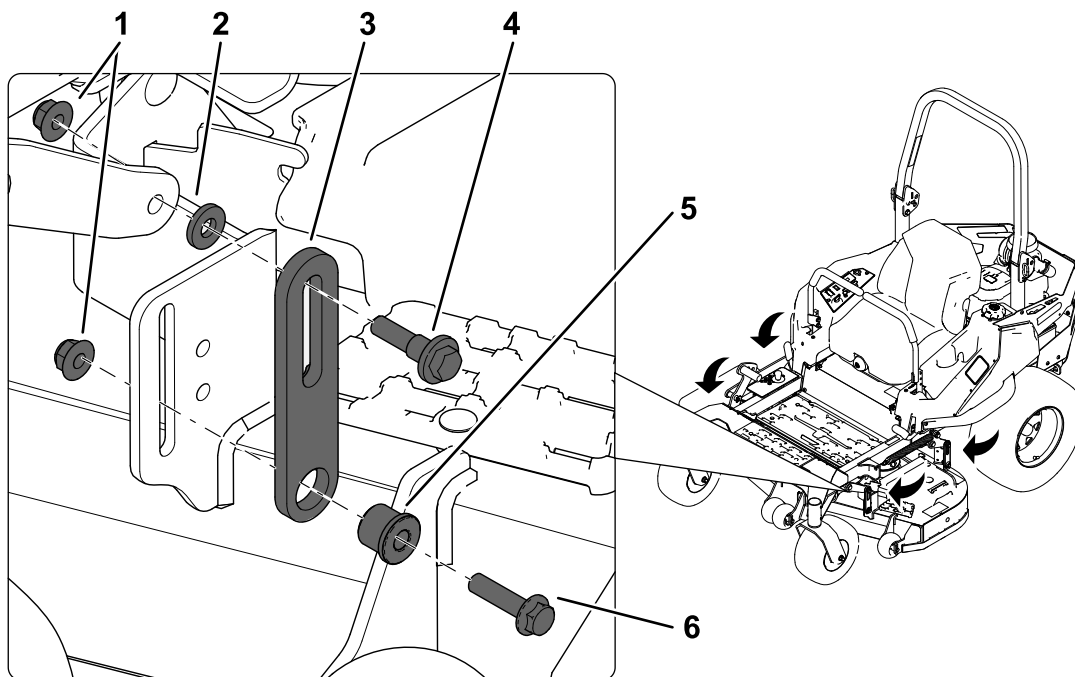


Figure 3

- | | |
|-------------------|------------------|
| 1. Nut | 4. Shoulder bolt |
| 2. Spacer | 5. Bushing |
| 3. Deck-lift link | 6. Flange bolt |

g522934

4

Completing the Installation

No Parts Required

Procedure

Refer to the adjusting the side-to-side leveling and the blade slope procedure in the *Operator's Manual* to ensure that deck-lift links are installed correctly.