




MODEL NO. 07224-80001 & UP  
MODEL NO. 07223-80001 & UP

OPERATOR'S AND PARTS  
CATALOG

### INDUSTRIAL WORKMAN KIT

To assure maximum safety, optimum performance, and to gain knowledge of the product, it is essential that you or any other operator of this Vehicle read and understand the contents of this manual before the engine is ever started. Pay particular attention to the **SAFETY INSTRUCTIONS** highlighted by the triangular safety alert symbol.

 The safety alert symbol means **CAUTION, WARNING** or **DANGER** - personal safety instruction. Failure to comply with the instruction may result in personal injury.


## SAFETY INSTRUCTIONS

Keep this Operator's Manual in the plastic tube behind the operator seat.

It is very important that all persons operating this equipment have easy access to these instructions at all times!

Carefully read and follow the "Maintenance" Instructions that are provided with this equipment and the Safety Instructions in the Workman Operator's Manual.


### RECOGNIZE SAFETY INFORMATION

 This safety-alert symbol is used to call attention to a **dangerous** situation, which could result in serious injury or death to the operator or a bystander.

Safety, mechanical and some general information in this manual are emphasized. **DANGER, WARNING** and **CAUTION** identify safety messages. Whenever the triangular safety symbol appears, it is followed by a safety message that must be read and understood. For more details concerning safety, read the Safety Instructions on this page and page 2. **IMPORTANT** identifies special mechanical information and **NOTE** identifies general information worthy of special attention.

2. Keep all shields, safety devices and decals in place. If a shield, safety device or decal is malfunctioning, illegible or damaged, repair or replace it before operating the machine.

These instructions are provided as a guide for the safe operation and maintenance of this equipment. However, the operator's personal safety, as well as those persons in the work area, will depend on the careful actions and good judgement of the operator. **To reduce the potential for injury or death, comply with the following safety instructions.**

 **WARNING**

**IMPROPER TOWING WITH THIS VEHICLE MAY CAUSE SERIOUS PERSONAL INJURY OR DEATH. TOWING AT EXCESSIVE SPEEDS COULD CAUSE VEHICLE TO LOSE STEERING CONTROL.**

- Never tow vehicle faster than 5 MPH (8 km/h).
- Never exceed maximum tongue weight of 400 LBS (181 KG.).
- Never exceed maximum trailer weight
  - Without trailer brakes  
1500 LBS (680 KG.)
  - With trailer brakes  
3500 LBS (1587 KG.)
- Read, understand, and follow Safety Instructions below and in Workman Operator's Manual before operating vehicle.

### BEFORE OPERATING:

1. Operate this machine only after reading and understanding the contents of this manual and the Workman Operator's manual. A replacement manual is available by sending complete model and serial number to:

Hahn Equipment Co., 1625 N. Garvin St.,  
Evansville, IN 47711.

# SAFETY INSTRUCTIONS

## WARNING

- Do not exceed capacity. Maximum capacity of operators, attachments and cargo is 1800 LB (4000 LB. GVW) or 800Kg (1800Kg GVW).
- Always distribute cargo load evenly on bed with center of gravity of load forward of rear axle.

### WHILE OPERATING:

3. Always Follow workman vehicle operating instructions in Workman Vehicle Operator's Manual.
4. DO NOT OVERLOAD THE VEHICLE. Never exceed maximum Operator and Pay Load Capacity of 1800 lb and maximum Gross Vehicle Weight of 4000 lb. Failure to position loads carefully can result in their shifting or tipping over. Distribute loads evenly, as low as possible, with center of gravity forward of rear axle. Secure load using Lifting Lugs (Figure 3).
5. Make certain everyone is clear of the machine before loading or starting the engine to move the vehicle.
6. Before backing up, look to the rear and assure no one is behind. Back up **slowly**.

### BED REMOVAL PROCEDURE:

## WARNING

- Base Weight for Bed of Industrial Workman kit is 350 lb.
- Always be sure Lifting device is capable of lifting bed and any attached accessory to avoid personal injury or death.

7. For removal of the cargo bed to preform engine service, adhere to the following procedure:
  - A. Stop the Vehicle and set the parking brake.
  - B. Shut off the vehicle's engine and remove key from ignition.

C. Disengage all power and wait until all moving parts have stopped.

D. Remove all cargo.

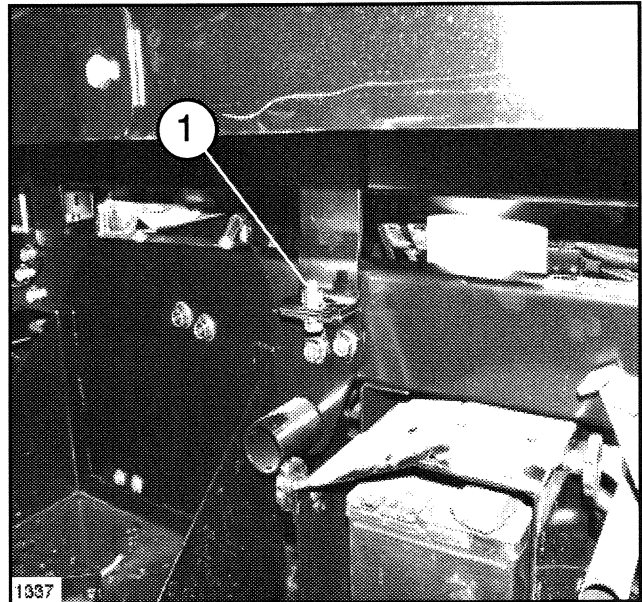


Fig 1

1. Front Securing Bolt

E. Remove welding gas bottles (if equipped)

F. Remove bed's Front Securing Bolts, shown in Figure 1.

G. Remove Rear Securing Pins, shown in Figure 2.

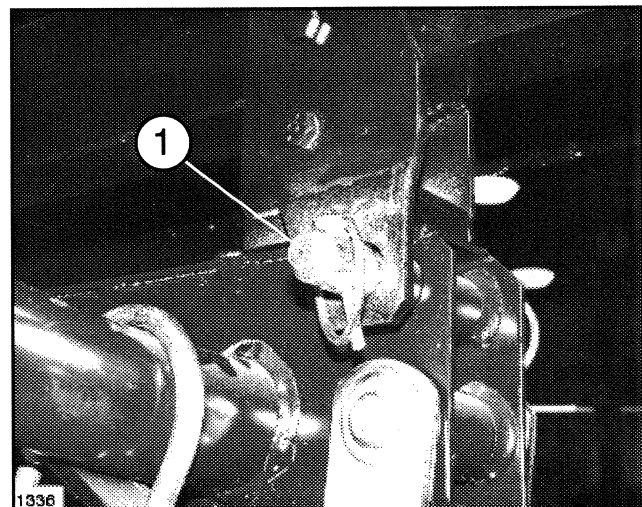


Fig 2

1. Rear Securing Pin

H. Lift the cargo bed from four corners evenly from the vehicle's frame, using Lifting Lugs as shown in Figure 3, and set aside.



# SAFETY INSTRUCTIONS

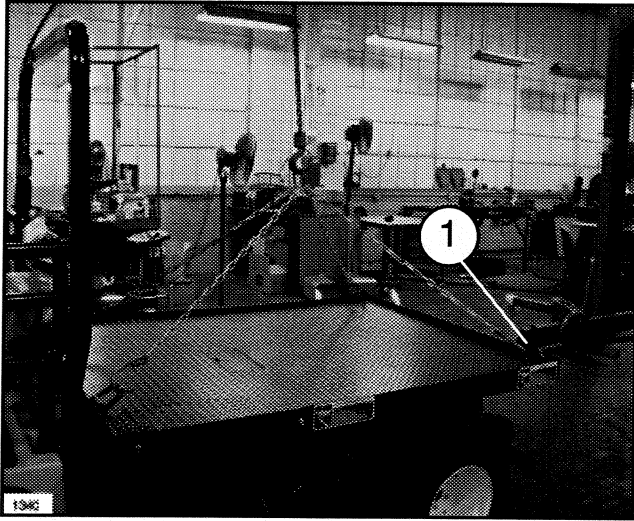


Fig 3  
1. Lifting Lugs

1. When service is complete, reinstall the cargo bed in its original position and secure with the pins at the rear and the bolts at the front. Refer to Torque Specs.
8. Keep all nuts, bolts and other fasteners tightened securely. Replace any shields removed during servicing or adjustments.
9. To be sure of optimum performance and safety, always purchase genuine TORO replacement parts and accessories. Replacement parts and accessories made by other manufacturers could be dangerous. Altering this equipment in any manner may affect the machine's operation, performance, stability, durability or its use may result in personal injury or death. Such use could void the product warranty by the TORO Company.

## SAFETY & INSTRUCTION DECALS

The following safety and instruction decals are installed on the INDUSTRIAL WORKMAN KIT. If any become damaged or illegible, replace them. Decals and part numbers are listed below and in the parts catalog. Order replacements from your Authorized Toro Distributor.

### ⚠ WARNING

**IMPROPER USE OF THE CARGO BED MAY CAUSE SERIOUS PERSONAL INJURY OR DEATH.**

**TO AVOID PERSONAL INJURY:**

- NEVER LIFT ENTIRE VEHICLE BY THE BED LIFTING LUGS.
- NEVER PIVOT BED UP ON REAR PINS.
- REMOVE ALL SECURING PINS, BOLTS AND ENTIRE BED FOR SERVICE.
- ALWAYS LIFT BED AT ALL FOUR CORNERS.
- ALWAYS REMOVE LOOSE CARGO BEFORE REMOVING BED.
- DO NOT EXCEED VEHICLE CAPACITY. MAXIMUM CAPACITY OF OPERATORS, ATTACHMENTS AND CARGO IS 1800 LBS. (4000 LBS. GW).
- ALWAYS DISTRIBUTE CARGO LOAD EVENLY ON BED WITH CENTER OF GRAVITY OF LOAD FORWARD OF REAR AXLE.

Four corners of Industrial Bed  
(Part No. 99-0488)

HITCH RATING

MAXIMUM TONGUE WEIGHT:  
400LBS (181KG.)

MAXIMUM TRAILER WEIGHT:  
WITHOUT TRAILER BRAKES;  
1500 LBS (680KG.)

WITH TAILER BRAKES;  
3500 LBS (1587 KG.)

92-2724

ON AXLE TUBE  
(Part No. 92-2724)

# MAINTENANCE



## WARNING

**IMPROPER USE OF THE CARGO BED MAY CAUSE SERIOUS PERSONAL INJURY OR DEATH.**

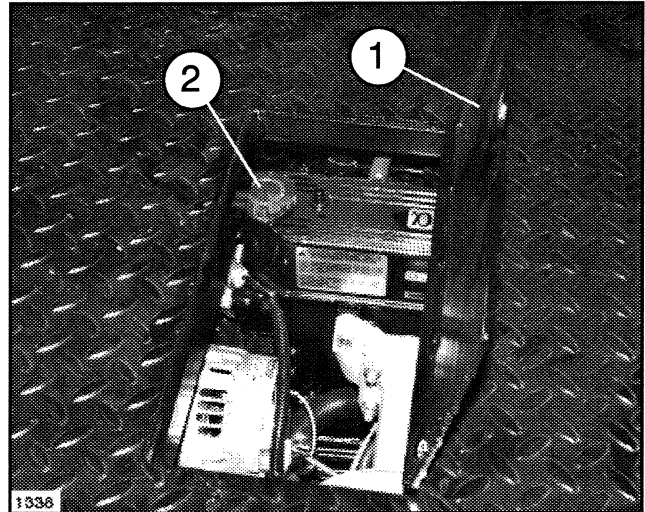
- Never lift entire vehicle by the bed Lifting Lugs.
- Never pivot bed on rear pins.
- Remove all securing pins and bolts and remove bed for service.
- Always remove all cargo before removing bed.
- Always lift bed at all four corners.
- Do not exceed capacity. Maximum capacity of operators, attachments and cargo is 1800 LB (4000 LB. GVW) or 800kg (1800kg GVW).
- Always distribute cargo load evenly on bed with center of gravity of load forward of rear axle.
- Read, understand, and follow Safety Instructions and Bed Removal Procedure before servicing vehicle.

## SERVICE INSTRUCTIONS:

### 1. Instructions for vehicle engine service

#### A. Diesel Unit:

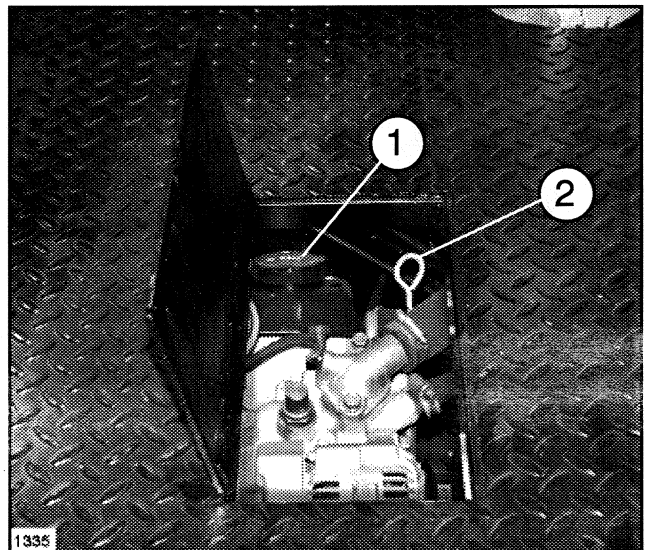
1. Check oil on lower right side of engine without lifting the cargo bed.
2. Add oil to engine through Access Door in bed. See Figure 4.



**Fig 4: Diesel Engine**

1. Access door
2. Oil fill cap

- B. Gasoline and Liquid Propane Gas units:  
Check oil and add oil through Access Door in bed. See Figure 5.



**Fig 5: Gas/Liquid Propane Gas Engine**

1. Oil filler cap
2. Oil check stick

# MAINTENANCE

C. For all engine bay service requiring the removal of the cargo bed, adhere to the previous removal procedures in Maintenance Safety Instructions on Page 2.

D. Refer to Workman Operator's Manual for service instructions.

2. Installation of welding gas bottles (for units equipped with optional Acetylene Tray Kit Model 07224).

A. Remove cover plate from industrial bed.

B. Remove fasteners securing the Bottle Restraint Plate at the front left corner of the cargo bed and set plate aside.

C. Place Oxygen and Acetylene Bottles onto the Bottle Tray as shown in Figure 5. Tray is designed for a 38" High Acetylene Tank with a diameter of 8 1/2" and a 48" high Oxygen Tank with a diameter of 7 1/2".

D. Secure the bottles to the bed with the bottle restraint plate. Reinstall 1/2" Whizlock fasteners using a torque load of 75 ft•lb (102 N•m).

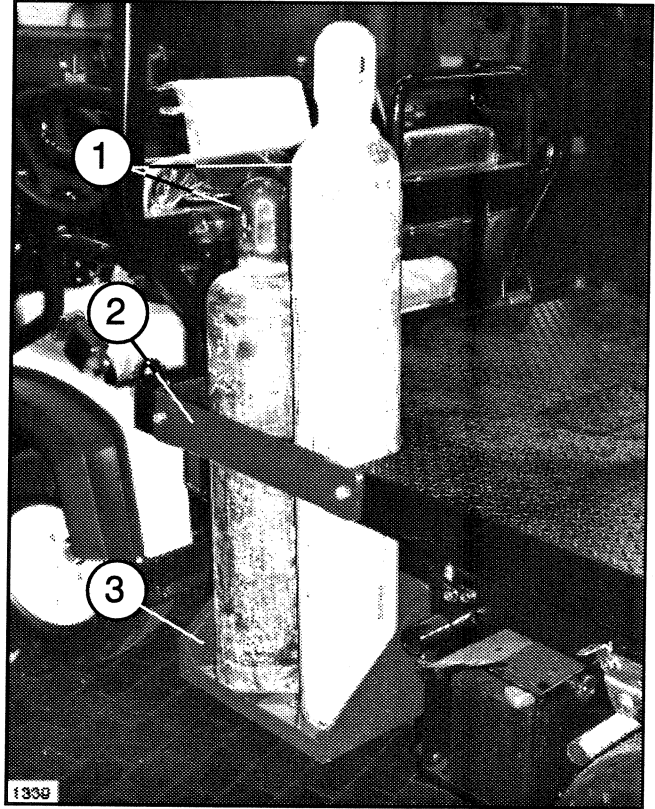
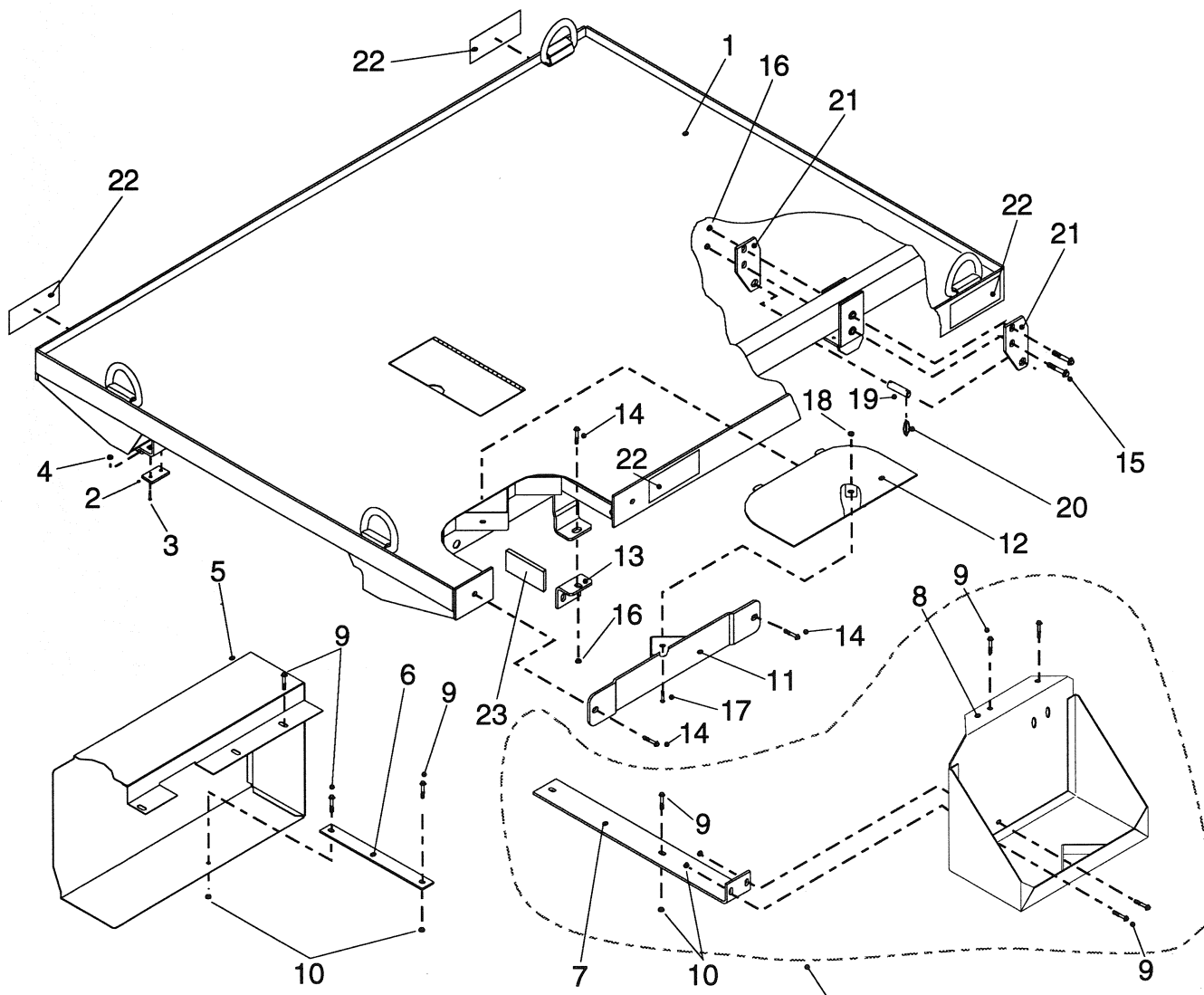


Fig 5

- 1. Oxygen and Acetylene Bottles
- 2. Bottle Restraint plate
- 3. Optional Bottle Tray

## TORQUE SPECIFICATIONS

Bolt Size	Ft•lb	N•m
3/8"	30	41
1/2"	75	102

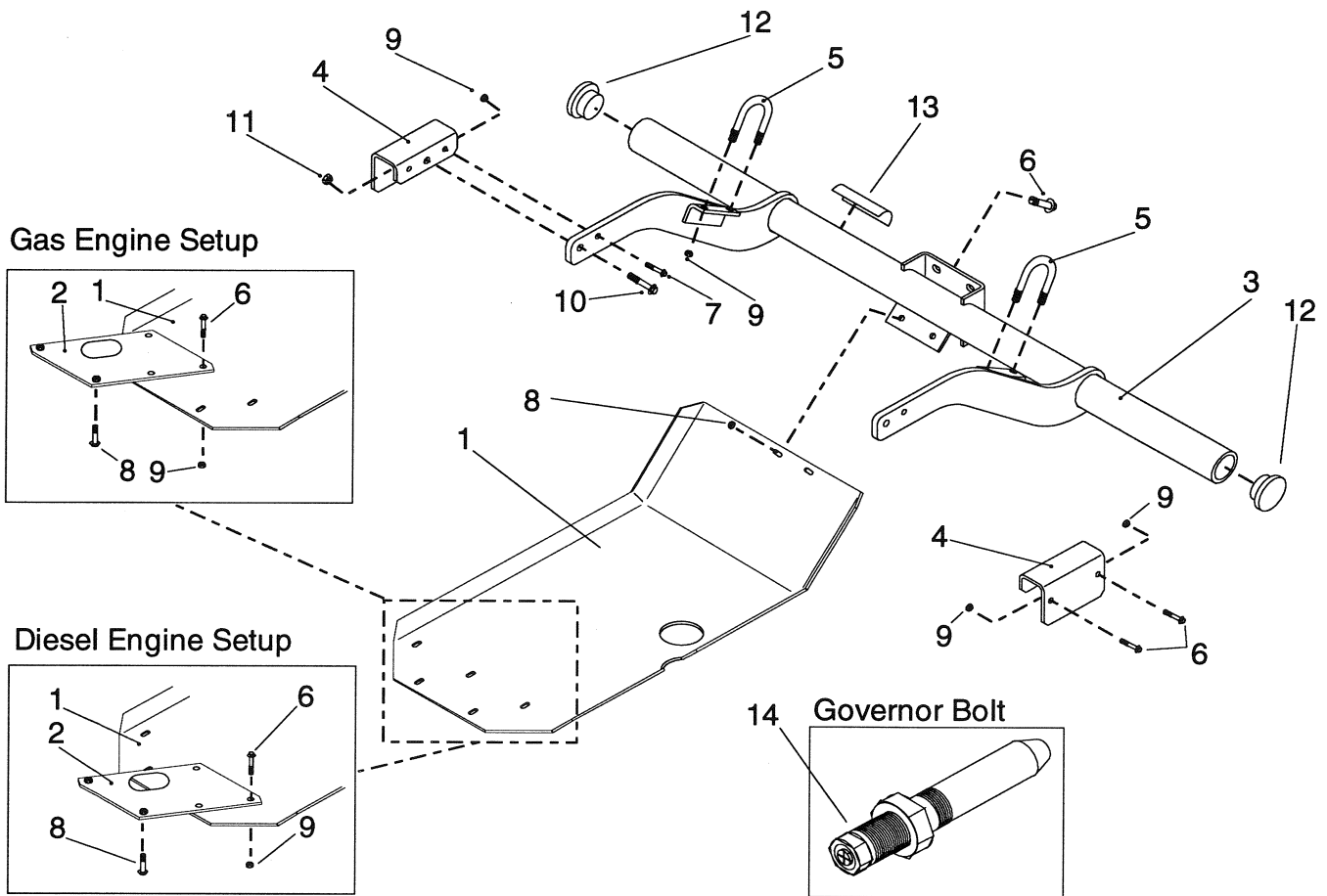


Model Number 07224

1361

#	Part No.	Description	Qty
1	99-0433	Flatbed Assembly	1
2	99-9719	Block - Wear	4
3	3250-45	Screw - Pan Hd. 1/4"	8
4	32128-33	Nut - Flange Lock 1/4"	8
5	99-0459	Tank Guard Assembly	1
6	99-0463	Strap - Guard Brace	1
7	99-0480	Strap - Tray Support	1
8	99-0476	Bottle Tray Assembly	1
9	3234-11	Screw - Cap HH 3/8" Whizlock	10
10	32128-43	Nut - Flange Lock 3/8"	5
11	99-0453	Bottle Restraint Assembly	1
12	99-0455	Cover Plate Assembly	1

#	Part No.	Description	Qty
13	92-2667	Bracket - Attachment Mount	2
14	3234-32	Screw - Cap HH 1/2" Whizlock	4
15	325-17	Screw - Cap HH 1/2"	4
16	32128-49	Nut - Flange Lock 1/2"	6
17	3234-4	Screw - Cap HH 1/4"	1
18	32128-33	Nut - Flange Lock 1/4"	1
19	92-1233	Pin - Clevis	2
20	92-1298	Pin - Lynch	4
21	99-0451	Plate - Rear Pin	4
22	99-0488	Decal - Bed Warning	4
23	99-0547	Foam Tape 1/4 x 1 1/2 x 7"	4



1362

#	Part No.	Description	Qty
1	99-0465	Plate - Skid	1
2	99-0466	Adjustment Plate Assembly	1
3	99-0468	Bumper Assembly	1
4	92-2700	Bracket - Hitch Arm	2
5	92-2752	U Bolt	2
6	3234-11	Screw - Cap HH 3/8" Whizlock	9
7	323-8	Screw - Cap HH 3/8"	2
8	3234-9	Screw - Cap HH 3/8"	2

#	Part No.	Description	Qty
9	32128-43	Nut - Flange Lock 3/8"	15
10	325-6	Screw - Cap HH 1/2"	2
11	32128-49	Nut - Flange Lock 1/2"	2
12	99-0473	Cap - Bumper	2
13	92-2724	Decal - Hitch Rating	1
14	99-0475	Bolt - Governor Replaces Governor Torque Spring Set to protect against magnetic interference in industrial applications.	1

†Item must be serviced by a Mitsubishi Authorized Toro Dealer/Distributor.



*Helping you put quality into play.®*