



MODEL NO. 41122-90101 & UP  
 MODEL NO. 41020-90101 & UP  
 MODEL NO. 41021-90101 & UP  
 MODEL NO. 41128-90101 & UP  
 MODEL NO. 41120-90101 & UP

## SET-UP AND PARTS CATALOG

# STANDARD ELECTRIC SPRAY SYSTEM 1000 FOR THE MULTI-PRO™ 1100 VEHICLE

Refer to illustrated Parts List for details of parts used in assembling the Standard Electric Spray System.

**NOTE: "Right", "Left", "Front", and "Rear" are referenced while seated in the operator's position.**

### TACHOMETER:

1. Remove four (4) 1/4" x 5/8" washer hd cap screws to remove the rear panel from the Steering Console.
2. Install the Tachometer to the right side of the Steering Column using two (2) #8 x 5/8" hex hd machine screws, lock washers, and hex nuts. See FIG. 1.
3. Route the Tachometer Cable through the hole in the top of the Steering Console below the Tachometer and install Grommet into hole around Cable. See FIG. 1.
4. Install RPM to Speed Decal above Tachometer.

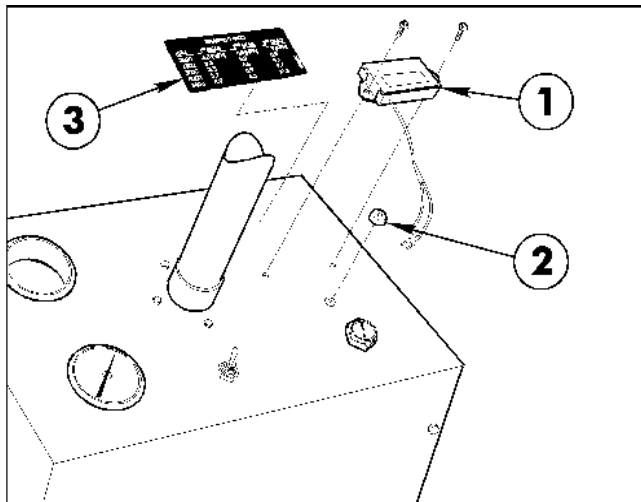


FIG. 1

1. Tachometer
2. Grommet
3. Decal

5. Route the Cable through the "U" shaped bracket under the floorboard, and up into the engine area to the right of the Transmission.

6. Slip red wire over an insulated section of the Spark Plug Wire and wrap 4 turns. See FIG. 2.

**IMPORTANT: Keep wire clear of extremely hot engine parts such as the muffler, etc.**

7. Ground the spade terminal on the white wire to the Ground Terminal Block mounted inside the Seat Box. After the connections are made, coil up any excess wire and tie strap to a convenient area. See FIG. 2.

8. Reinstall Rear Panel.

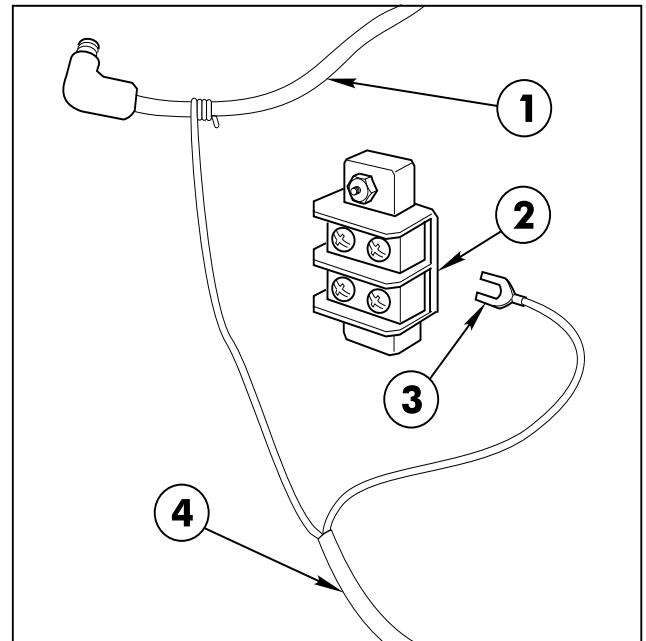


FIG. 2

1. Spark Plug Wire
2. Ground Terminal Block
3. Spade Terminal
4. Tachometer Cable

### CONTROL CONSOLE:

1. Using two 1/4" hex washer hd screws, install the Mounting Bracket for the Console Control on the left side panel of the Seat Support.

2. Route the Cable Assembly along the rear of the seat support. Place an R-clamp around the Cable and secure it to the Seat Support with a 5/16" x 3/4" cap screw, flat washer and hex nut.

3. Route the Cable along the left side and to the rear of the Vehicle frame. Secure with plastic tie-straps.

4. Measure carefully and determine the length of white wire necessary to reach the Ground Terminal Block. Cut off the excess wire and crimp the spade terminal onto the stripped end. Connect the spade terminal to the Ground Terminal Block as shown in FIG. 3.

5. Measure carefully to determine the length of red wire necessary to reach the Fuse Block. Cut off excess wire and crimp the push-on terminal onto the stripped end. Connect the push-on terminal to the male terminal on the red wire from the Fuse Block, as shown in FIG. 3.

6. Insert the 20-amp fuse into the Fuse Block receptacle, as shown in FIG. 3.

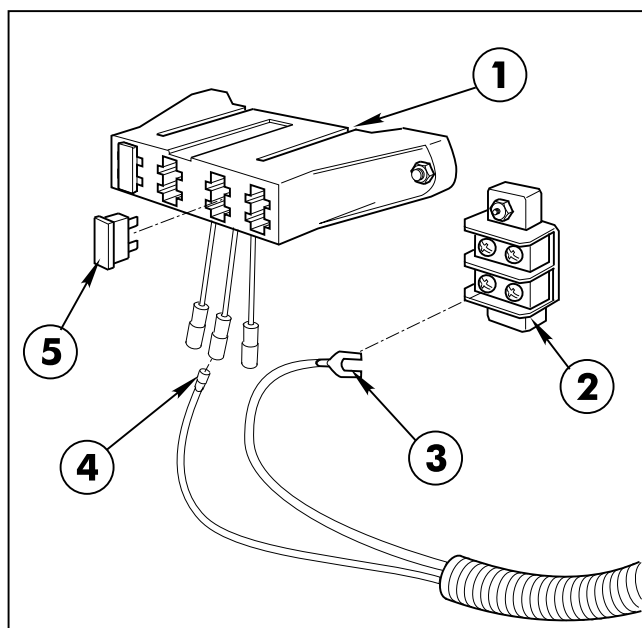


FIG. 3

- |                          |                                 |
|--------------------------|---------------------------------|
| 1. Fuse Block            | 3. Spade Terminal               |
| 2. Ground Terminal Block | 4. Push-on Terminal             |
|                          | 5. Sprayer System Fuse (20 amp) |

## CENTRIFUGAL PUMP:

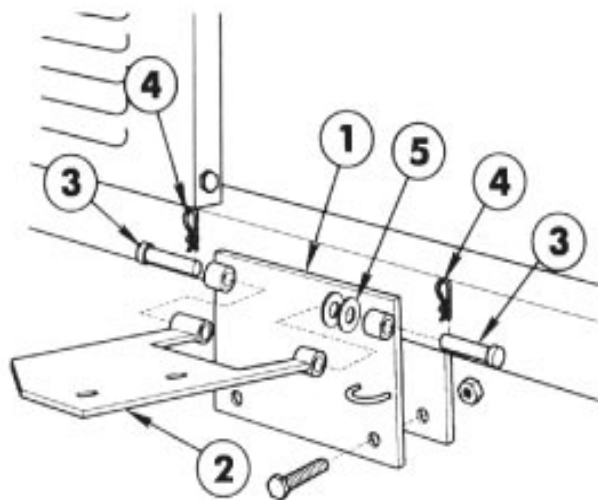
**IMPORTANT!** If the optional Rollover Protection Structure (ROPS) is to be installed on the Vehicle, it must be installed prior to installing the Centrifugal Pump. See the Installation Instructions furnished with the ROPS (model no. 41185); or the ROPS Adaptor Kit (part no. 92-8240).

1. Mount the Pivot Mounting Plate to the angle on the bottom of the Vehicle Frame, using two 1/2" x 1-1/4" cap screws and lock nuts. See FIG. 4.

2. Align the pivot tubes on the Pump Pivot Plate with those on the Pivot Mounting Plate. Insert the two (2) clevis pins and secure with two (2) hairpin cotters.

**NOTE:** In the following instructions, "sealer" refers to RTV clear silicone.

3. Secure the Centrifugal Pump in a vise. Apply thread sealer and install the fittings to connect the Suction, Supply, and Agitator Hoses to the Pump as shown in FIG. 5.



- |                         |                    |
|-------------------------|--------------------|
| 1. Pivot Mounting Plate | 3. Clevis Pin      |
| 2. Pump Pivot Plate     | 4. Hair Pin Cotter |

4. Assemble the Pump Drive Pulley onto the Pump shaft with the Pulley's **hub** facing **away** from the Pump.

5. Assemble the Centrifugal Pump and the Spring Mounting Angle to the Pump Pivot Plate, using two (2) 3/8" x 1-1/2" cap screws, flat washers, and lock nuts as shown in FIG 6.

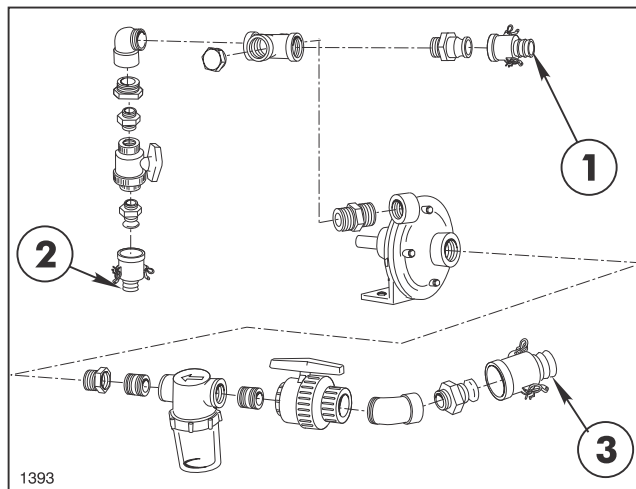


FIG. 5

- |             |            |
|-------------|------------|
| 1. Supply   | 3. Suction |
| 2. Agitator |            |

6. Using a straight edge as a guide, position the Pump Pulley so that it is in alignment with the Engine's Drive Pulley. When alignment is correct, tighten the two (2) set screws in the Pump Pulley's hub.

7. Install the Pump Drive Belt around the Pump and Engine drive Pulley.

8. Loosely mount the Pump Belt Cover to the Pump hub with the Pump Cover Clamp and the two (2) 5/16" flat washers, lock washers, and hex nuts. See FIG. 6.

9. Insert the 3/8" x 4" cap screw through the Pump Cover and into the hole in the Pump Cable's end fitting. Secure the Cable to the Cover with a 3/8" lock nut.

10. Remove the hair pin cotter and flat washer from the pin in the Accessory Control Lever. Push the Control Lever down (engaged). Slide the unattached end of the Cable onto the pin and secure with the flat washer and hair pin cotter previously removed.

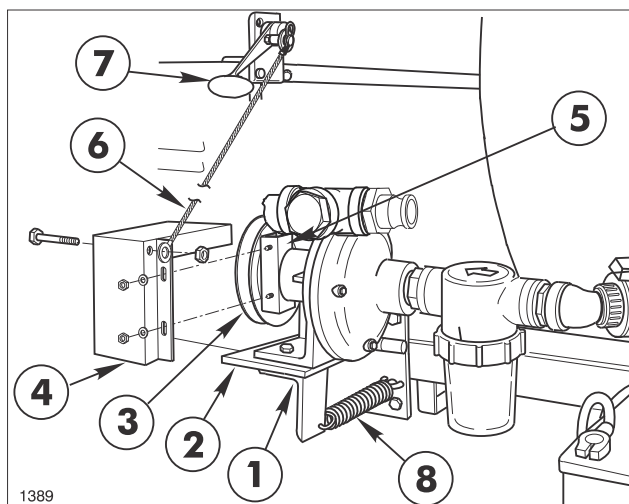


FIG. 6

- |                          |                            |
|--------------------------|----------------------------|
| 1. Spring Mounting Angle | 5. Pump Cover Clamp        |
| 2. Pump Pivot Plate      | 6. Pump Cable              |
| 3. Pump Pulley           | 7. Accessory Control Lever |
| 4. Pump Belt Cover       | 8. Pump Spring             |

11. Connect one end of the Pump Spring to the ring on the Pump Pivot Plate and the other end through the hole on the Spring Mounting Angle.

12. Engage the Accessory Control Lever...DO NOT START ENGINE! Adjust the Belt Guide to obtain 1/8" clearance between the inside of the Guide and the Belt.

13. Rotate the Belt Cover around the Pump hub until the tension on the Pump Control Cable requires a small amount of pressure to snap the Control lever "over-center" to disengage the Pump drive. Make sure there is 1/8" clearance between the Belt and the inside of the Belt Cover. Tighten the lock nuts after adjustment is complete.

If step 13 does not achieve the necessary tension on the Control Cable, loosen the Pump mounting bolts and slide the Pump on the Pivot Plate away from the Vehicle Frame, increasing the Cable tension.

## TANK ASSEMBLY:

1. Cut the shipping straps and remove the Spray Tank and Saddle Assembly from the shipping skid.

**NOTE:** In the following instructions, sealer refers to RTV clear silicone when used for pipe fittings.

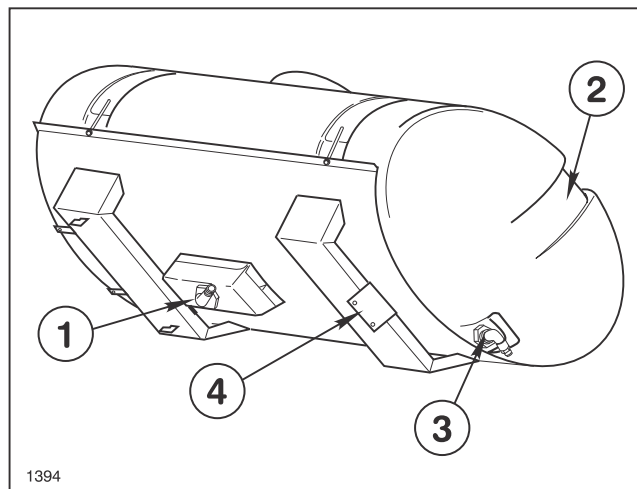


FIG. 7

- |                           |                                  |
|---------------------------|----------------------------------|
| 1. Barbed Elbow (Suction) | 3. Elbow & Quick Barb (Overflow) |
| 2. Spillway               | 4. Mounting Member               |

2. Apply thread sealer and install the 90° barbed elbow into the bottom of the Spray Tank.

3. Attach 1-1/4" x 25" Suction Hose to the barbed elbow in the bottom of the Tank with a hose clamp. Attach 1-1/4" barbed female quick coupler to the other end of the Suction Hose and secure with a hose clamp.

4. Attach 1/2" x 42" Agitator Hose to the 1/2" barbed elbow in the front of the Tank with a hose clamp. Attach 1/2" barbed female quick coupler to the other end of the Agitator Hose and secure with a hose clamp.

5. Apply thread sealer and install the 90° street elbow and a male quick coupler barb into the fitting at the rear ("spillway") of the Tank.

6. Place the Tank and Saddle Assembly on the Vehicle Frame.

7. Slide the Tank and Saddle forward, to hook the two lugs on the front of Saddle under the Vehicle's cross member, resting the angle under the rear Saddle over the Vehicle's rear cross member.

8. Secure the Mounting Member to the Vehicle's cross member with two (2) 1/2" x 1-1/2" cap screws, flat washers, lock washers and hex nuts.

9. Route the Suction Hose over the left side of the Vehicle Frame and connect the couplers at the Suction Ball Valve.

10. Route the Agitator Hose over the Vehicle Frame and under the Pump to connect the couplers at the Agitator Ball Valve.

### BOOM HOLD-IN ASSEMBLY:

1. Mount right Hold-In Brace assembly to the two (2) 5/16" carriage bolts in the front Tank Band using two (2) 5/16" flat washers and hex nuts. Tighten securely. See FIG. 8.

2. Attach right Boom Hold-In assembly to Hold-In Brace assembly using two (2) 1/4" U-bolts and four (4) 1/4" lock nuts. Attach Rubber Hold-Down to Hold-In Brace assembly. Repeat steps 1 and 2 for left side.

3. Mount Wash Tank Bracket (open end forward) to right-hand Hold-In Brace assembly using two (2) 5/16" x 1" hex hd. Cap screws, flat washers, and hex nuts. Place Clean Water Wash Tank into Wash Tank Bracket and secure with Rubber Hold-Down, as shown in FIG. 8.

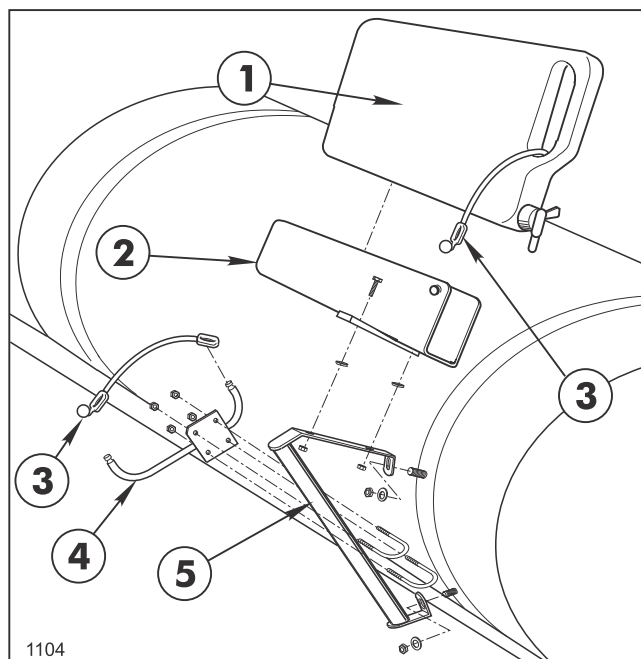


FIG. 8

- |                          |                        |
|--------------------------|------------------------|
| 1. Clean Water Wash Tank | 3. Rubber Hold-Down    |
| 2. Wash Tank Bracket     | 4. Boom Hold-In Ass'y  |
|                          | 5. Hold-In Brace Ass'y |

### BOOM FRAME ASSEMBLY:

1. Apply a heavy coating of grease to the tubes of the two Boom Mount Assemblies and insert them into the Vehicle frame as shown in FIG 9.

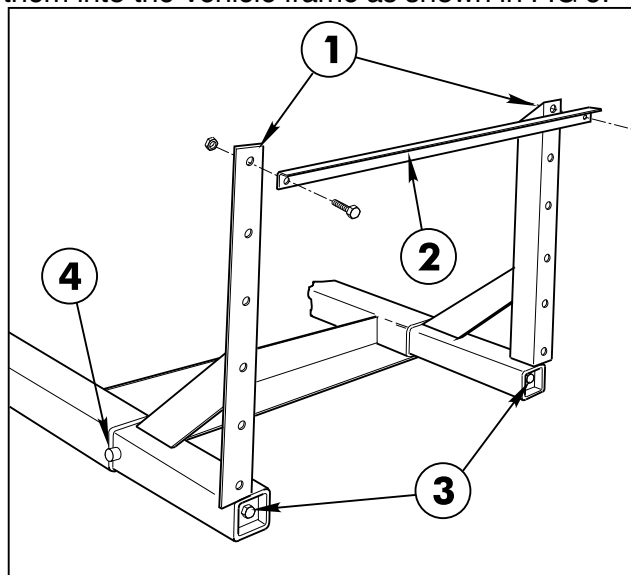


FIG. 9

- |                        |                |
|------------------------|----------------|
| 1. Boom Mount Assembly | 3. Wedge Screw |
| 2. Cross Support Angle | 4. Stop Pin    |

**NOTE:** Note the position of the angle member of the Boom Mount Assemblies in relation to the tube member. They must be positioned as shown for the mounting of the Cross Support Angle.

Steps 2 and 3 apply to the assembly of the Standard Boom only. If the optional "Boom Pivot Kit" is to be installed, see the instructions furnished with that kit. The Cross Support to be used with that kit is different than the Support used on the Standard Boom.

2. Position the Cross Support Angle and attach it to the Boom Mount Assemblies with two 1/2" x 1-1/4" hex hd cap screws and lock nuts.

3. Position the Spacer Tubes between the Boom Mount uprights and the lugs on the Main Frame Tube. Use two 1/2" x 4" hex hd cap screws and lock nuts to secure the Main Frame Tube to the uprights. See FIG. 10.

4. Using a torque wrench, tighten the 1/2" x 18" screws that join the Wedges to the Boom Mounts. Tighten to 50 ft. lbs.

5. Position the two (2) Center Boom angles on the Main Frame and secure them to the Main Frame tube with two (2) square U-bolts, four (4) flat washers and hex nuts. See FIG 10.

6. Center and attach the Center Boom Pipe to the two Center Boom Angles with two (2) clamps, 3/8" x 1" cap screws, flat washers and lock nuts.

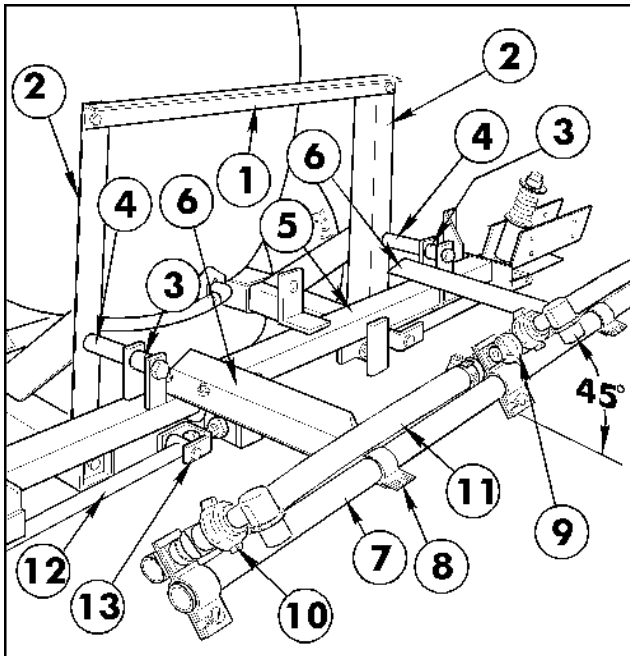


FIG. 10

- |                            |                             |
|----------------------------|-----------------------------|
| 1. Cross Support Angle     | 8. Boom Clamp               |
| 2. Boom Mount Assy.        | 9. Triple Barb Nozzle Body  |
| 3. Spacer Tube, 1" lg.     | 10. Single Barb Nozzle Body |
| 4. Spacer Tube, 1-1/4" lg. | 11. Jumper Hose             |
| 5. Main Frame Tube         | 12. Strut Assembly          |
| 6. Center Boom Angle       | 13. Adjustable Clevis       |
| 7. Center Boom Pipe        |                             |

7. Loosely attach the Double Barb Turret Assembly in the approximate center of the Center Boom Pipe. For the most uniform spray coverage, position all Turret Assemblies as shown in FIG. 10.

8. Loosely attach Single Barb Turret Assembly to LH end of the Center Boom Pipe. Loosely attach Threaded Turret Assembly to RH end of the Center Boom Pipe. Place two hose clamps on the two 3/4" x 19" Jumper Hoses and connect the two "end" Turret Assemblies to the Double Barb Turret Assembly. Turret Assemblies should be level and spaced on 20" centers. Install 90° 3/4" Hose Barb on RH Turret Assembly. Tighten all fasteners securely (FIG. 10).

9. Attach the Strut Assemblies to the Adjustable Clevis Assemblies found on each side of the Main Frame tube with two (2) 1/2" x 2" clevis pins and two (2) 1/8" x 1" cotter pins. See FIG. 10.

**IMPORTANT! DO NOT over-tighten the nuts in steps 10 and 12. The clamping action could crush the Boom Pipe.**

10. Insert the plugged end of an Extension Boom Pipe into the Pivot Assembly and secure with four (4) 1/4" x 1-1/4" cap screws and lock nuts. Repeat on the opposite side to assemble the other Extension Boom. See FIG. 11.

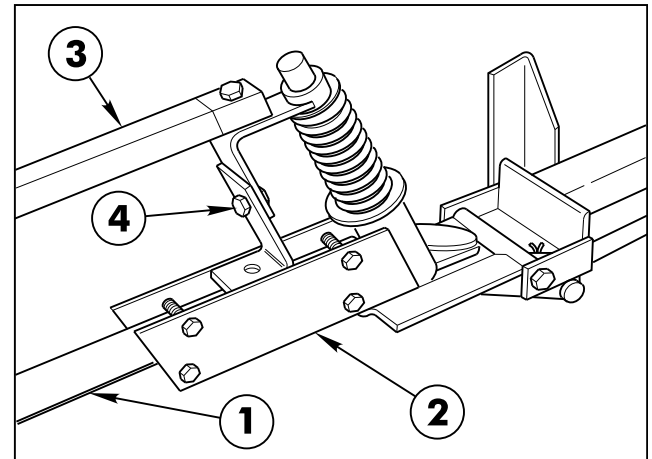


FIG. 11

- |                        |                          |
|------------------------|--------------------------|
| 1. Extension Boom Pipe | 3. Boom Support Assembly |
| 2. Pivot Assembly      | 4. Height Adjustment     |

11. Attach the Boom Support Assembly to the Pivot Assembly, using a 5/16" x 1-1/2" cap screw and lock nut. See FIG. 11 & 12.

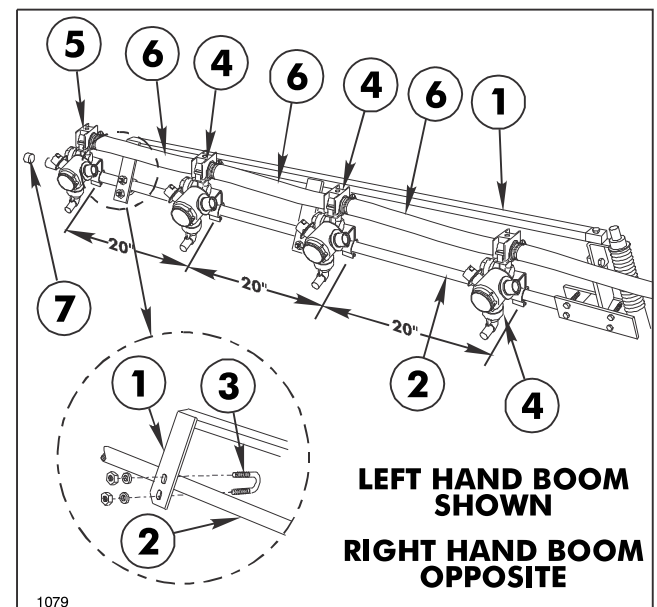


FIG. 12

- |                            |                            |
|----------------------------|----------------------------|
| 1. Boom Support Assembly   | 5. Single Barb Nozzle Body |
| 2. Extension Boom Pipe     | 6. Jumper Hose             |
| 3. U-bolt                  | 7. Boom cap                |
| 4. Double Barb Nozzle Body |                            |

12. Secure the two plates of the Boom Support Assembly to the Extension Boom Pipe, using two (2) 1/4" U-bolts, four (4) lock nuts and four (4) flat washers. See FIG. 12.

13. Assemble the Boom Support Assembly to the other Extension Boom Pipe.

14. At the adjustable clevis assemblies (FIG. 10) adjust booms to the level position by adjusting the jam nuts to the desired position, then tighten the end nuts against the Boom Frame Support member.

15. Attach three double barb and one single barb Turret Assemblies on each Extension Boom Pipe as shown in FIG 12. Turret Assemblies are to be level and spaced on 20" centers. Connect the Turret Assemblies with the 3/4" x 19" Jumper Hoses. Secure with hose clamps. **NOTE: Two jumper hoses provided with this kit are 21" long. They should be cut to 19" long for this set-up.**

16. Install the plastic Boom Caps over the ends of the Boom Pipes.

17. Recheck and tighten all fasteners and hose clamps securely.

### CONTROL VALVE/SOLENOID ASSEMBLY:

1. Apply thread sealer and assemble the Control Valve, close nipple, and Solenoid Valve Assembly as shown in FIG. 13.

2. On the Solenoid Assembly, connect the black wire on left solenoid, brown on middle solenoid, blue on right solenoid and a white jumper on all three solenoids.

3. Slide head of M6 x 16 mm hex hd. Screw to the top of the mounting groove in each Solenoid Valve. Assemble Solenoid Valve Assembly to the Solenoid Mounting Bracket using three (3) M6 x 16 mm screws just installed. Secure Solenoids with three (3) M6 hex nuts and lockwashers. See FIG. 13.

4. Install Solenoid Valve and Bracket Assembly to the Cross Support. Secure with two (2) flange cap screws and Hex Flange Nuts.

5. Install Control Valve Bracket to Cross Support. Secure with two (2) flange cap screws and Hex Flange Nuts. (Do not tighten). See FIG. 13.

6. Place Straight Hose Barb through circular opening in Control Valve Bracket and screw into the inlet port of the Control Valve. Tighten Control Valve Bracket fasteners securely.

7. Insert 1" Quick Coupler into end of 1" x 58" Supply Hose and secure with hose clamp. Attach other end of hose to hose barb in Control Valve and secure with hose clamp.

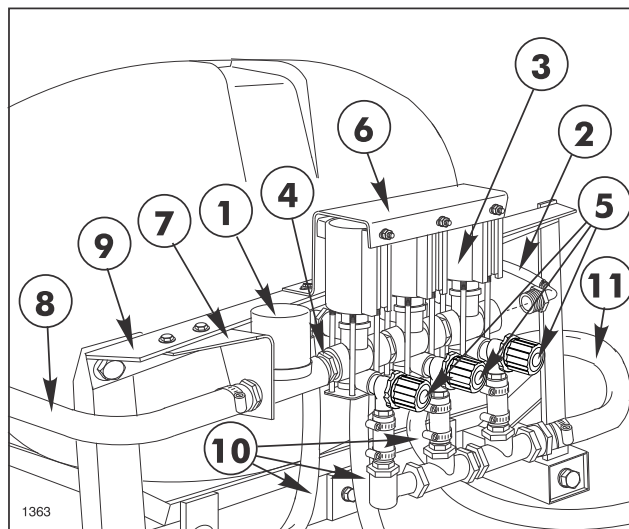


FIG. 13

- |                         |                        |
|-------------------------|------------------------|
| 1. Control Valve        | 6. Solenoid Mtg. Brkt. |
| 2. Pressure Gauge Tube  | 7. Control Valve Brkt. |
| 3. Solenoid Valve Assy. | 8. Supply Hose         |
| 4. 3/4" Close Nipple    | 9. Cross Support Angle |
| 5. Throttling Valve     | 10. Boom Feeder Hose   |
|                         | 11. Hose Bypass        |

8. Connect the Supply Hose to the male Quick Barb at the Centrifugal Pump

9. Insert 1" Quick Coupler into end of 1" x 29" Bypass Hose and secure with hose clamp. Attach other end of hose to the hose barb at the bypass manifold and secure with hose clamp. See FIG. 13.

10. Connect the Bypass Hose to the male Quick Barb at the rear of the Spray Tank.

11. Apply thread sealer and install 1/4" male tube fitting into the reducer bushing in the end of the Solenoid Valve Assembly. Insert Gauge Tube in fitting and tighten fitting. See FIG. 13.

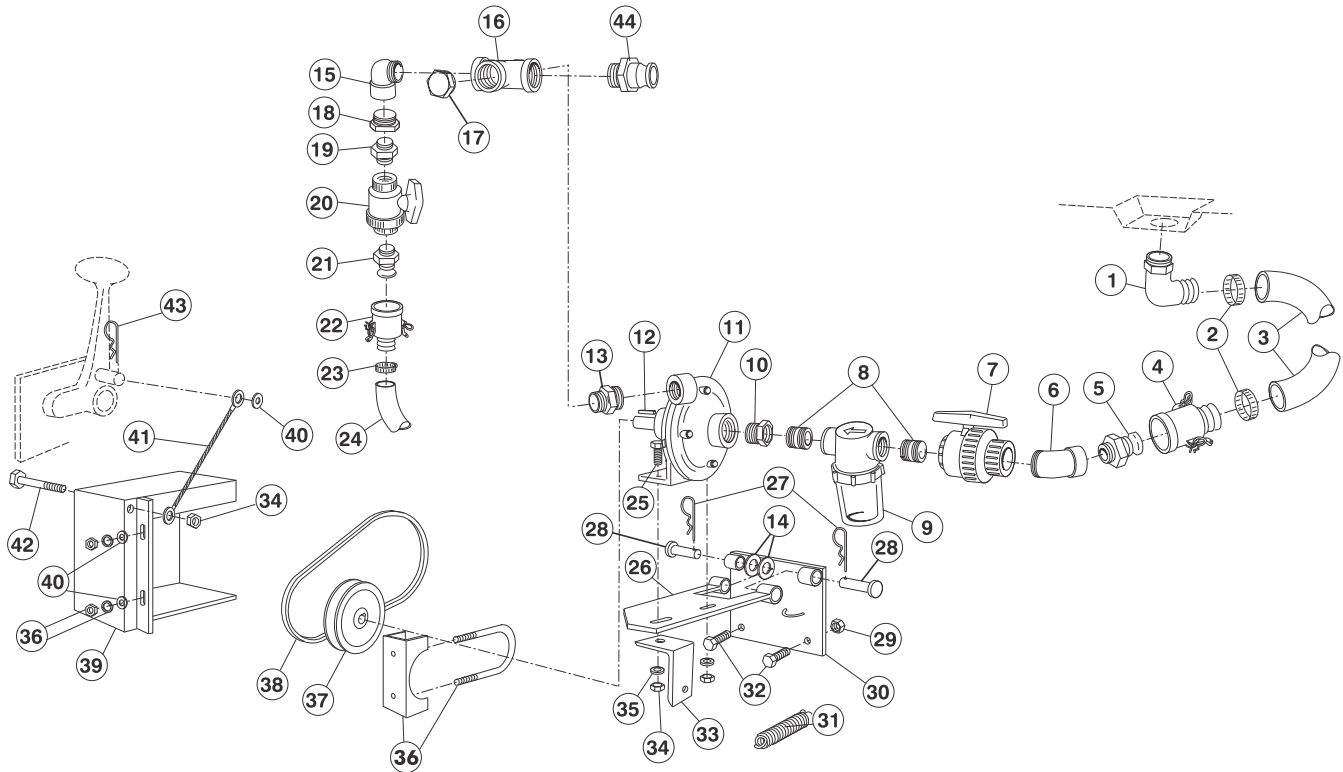
12. Connect the Boom Feeder Hoses to the barbs in the Solenoid valve with hose clamps.

13. Place a hose clamp on the Center Boom Feeder Hose and attach it to the 90° hose Barb at the end of the Center Boom Pipe.

14. Place a hose clamp on the right and left Boom Feeder Hoses and attach them to the Double Barb Turrets on the right and left Extension Boom Pipes.

15. Fill the Tank with clean water and check for any leaks.

16. Refer to the Standard Electric Spray System Operator's Manual for the proper calibration and operation of the Standard Electric Spray System.



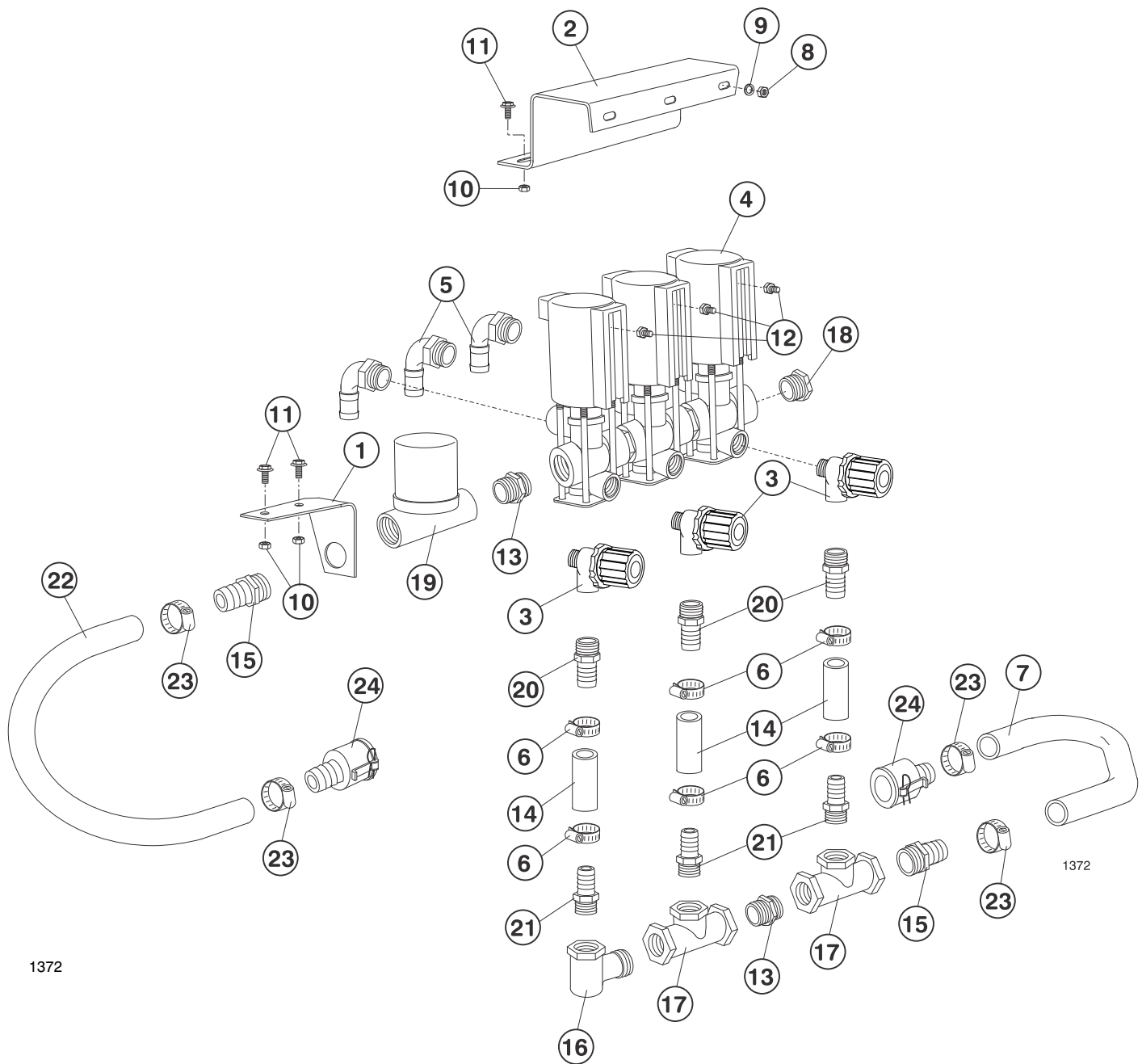
1391

## STANDARD ELECTRIC SPRAY SYSTEM PUMP SET-UP

Ref	Part No.	Description	Qty
1	93-0856	90° Elbow 1-1/4 NPT	1
2	41327	Hose Clamp	2
3	93-0858	Suction Hose 1-1/4 x 25	1
4	93-0854	Quick Coupler x 1-1/4 Hose Barb	1
5	93-0888	Quick Barb x 1-1/4 Male NPT	1
*	93-0853	Quick Coupling Dust Cap	1
6	93-0897	St. Elbow 1-1/4 x 45°	1
7	93-0855	Ball Valve, x 1-1/4 NPT	1
8	92-0050	Close Nipple, 1-1/4 NPT	2
9	42701	Suction Strainer	1
*	93-0687	Bowl (f/w 42701)	1
*	94-7065	Strainer Screen 20 mesh (Std.) (f/w 42701)	1
*	42702	Strainer Screen 40 mesh (Opt'l.)	AR
*	42703	Strainer Gasket (f/w 42701)	AR
10	42056	Red. Bushing, 1-1/4 x 1-1/2 NPT	1
11	93-0848	Centrifugal Pump	1
12	92-0049	Square Key	1
13	42992	Reducing Nipple	1
14	3256-26	Flat Washer, 1/2"	AR
15	41307	90° St. Elbow	1
16	92-8416	Cross, 1" FPT	1
17	41315	Hex Plug	1
18	41306	Reducing Bushing, 1 x 1/2 NPT	1
19	41314	Close Nipple	1

\* Items Not Illustrated

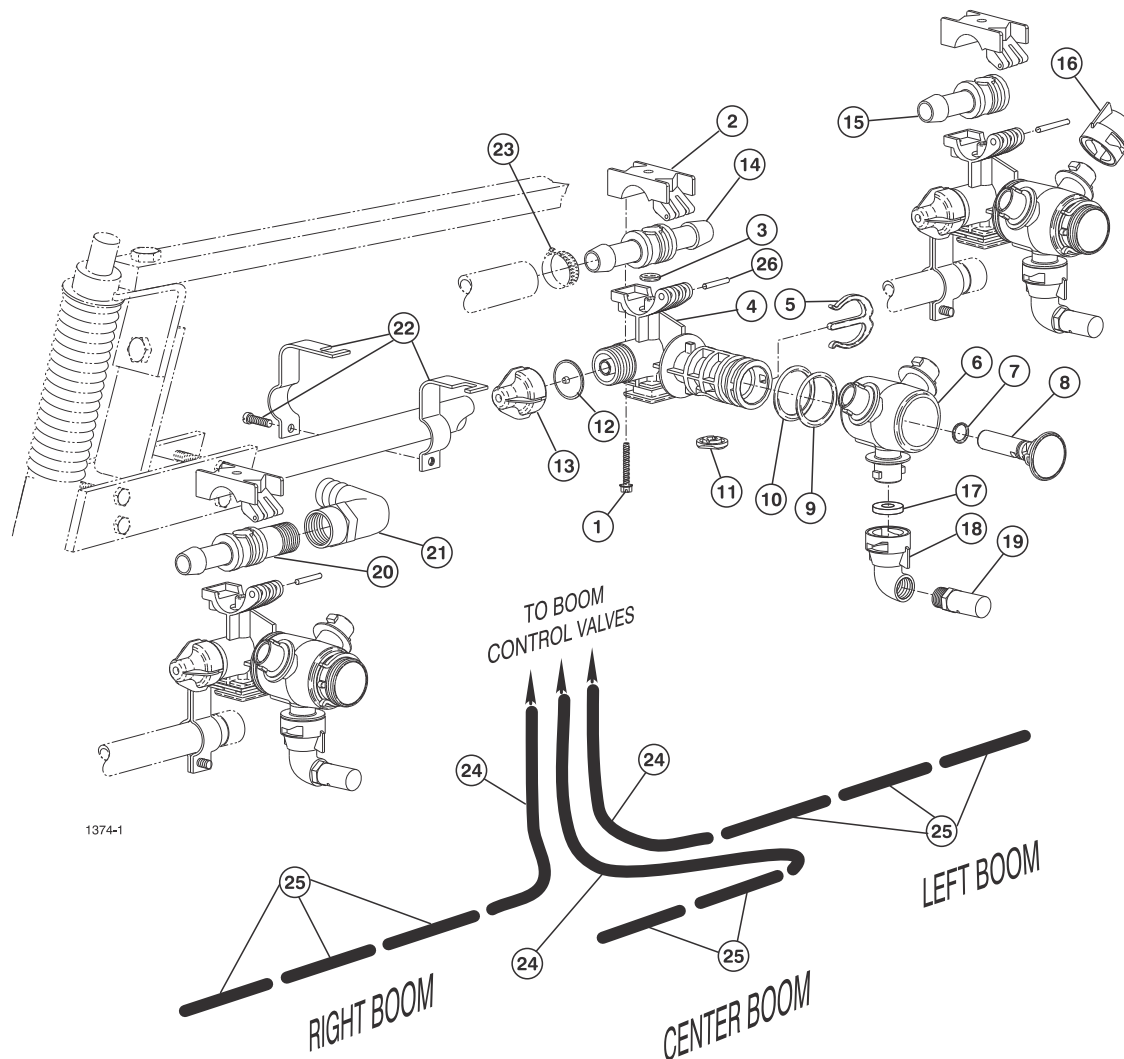
Ref	Part No.	Description	Qty
20	40192	1/2 NPT Ball Valve	1
21	40486	Quick Barb x 1/2 Male NPT	1
*	41317	Quick Coupler Dust Cap	1
22	40487	Quick Coupler x 1/2 Hose Barb	1
23	96609	Hose Clamp	2
24	42946	Agitator Hose - 42" Length	1
25	323-8	HHCS, 3/8 NC x 1-1/2	2
26	92-3771	Pump Pivot Plate Assy.	1
27	328967	Cotter Hair Pin	2
28	42195	Clevis Pin	2
29	32153-5	Lock Nut, 1/2 NC	2
30	92-3782	Pivot Mount Plate Assy.	1
31	41721	Pump Spring	1
32	325-5	HHCS, 1/2 NC x 1-1/4	2
33	41720	Spring Mounting Angle	1
34	32153-2	Lock Nut, 3/8 UNC	3
35	3256-4	Flat Washer, 3/8 USS	2
36	20-4840	Muffler Clamp	1
37	40198	Pump Sheave	1
38	42989	Pump Drive Belt	1
39	41142	Pump Belt Cover Assy.	1
40	3256-24	Flat Washer, 3/8 SAE	3
41	42993	Pump Cable	1
42	323-16	HHCS, 3/8 UNC x 4	1
43	328963	Hair Pin	1
44	40479	Quick Barb 1" Male	1



## CONTROL VALVE

Ref	Part No.	Description	Qty
1	99-0529	Control Valve Bracket	1
2	99-0528	Solenoid Valve Bracket	1
3	42872	Throttling Valve	3
4	99-0530	Bypass Solenoid Valve Assembly	1
	99-0536	Single Solenoid	AR
5	92-8557	Hose Barb, 90° 1/2" x 3/4" HB	3
6	92-0045	Hose Clamp	6
7	40165	Hose Bypass, 1" x 29"	1
8	43-2830	Hex Nut, M6-1	3
9	48-8020	Lock Washer	3
10	32128-20	Hex Flange Nut	4
11	3234-5	HHCS	4

Ref	Part No.	Description	Qty
12	48-7620	HHCS, M6 x 16mm	3
13	41294	Close Nipple, 3/4"	2
14	42944	Connector Hose, 3/4" x 2-1/2"	3
15	41730	Hose Barb, 3/4" MPT x 1" H.B.	2
16	42940	St. Elbow, 3/4" NPT	1
17	42941	Tee, 3/4" NPT	2
18	41310	Reducer Bushing, 3/4" x 1/4"	1
19	42936	Control Valve	1
20	41313	Hose Barb, 1/2" MPT x 3/4" H.B.	3
21	41257	Hose Barb, 3/4" MPT x 3/4" H.B.	3
22	92-8554	Supply Hose, 1" x 58"	1
23	21146	Hose Clamp	4
24	40480	Quick Coupler	2



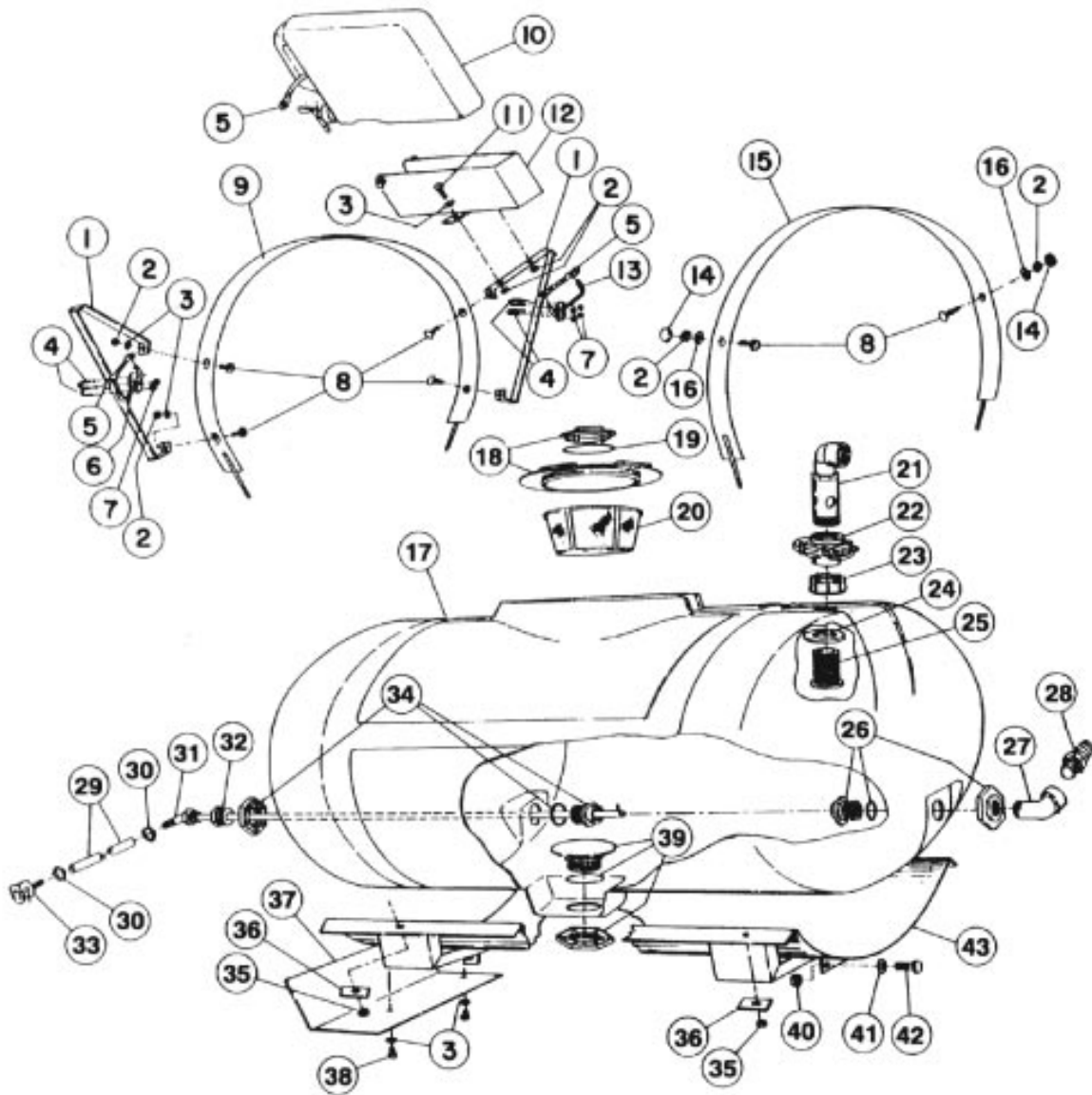
## TURRET BODIES & BOOM HOSES

Ref.	Part No.	Description	Qty.
*	95-9183	Turret Body - Double Barb (Incl. Ref. #'s 1-14)	7
*	95-9181	Turret Body - Single Barb (Incl. Ref. #'s 1-13 & 15)	3
*	95-9184	Turret Body - Barb x 1/2 NPT (Incl. Ref. #'s 1-13 & 20)	1
1	99-0811	Screw	1
2	99-0812	Upper Clamp	1
†3	95-9191	O-Ring	1
4	95-9192	Split-Eyelet Body	1
5	95-9197	E-Clip	1
6	95-9196	Turret	1
†7	95-9198	O-Ring	1
8	95-9200	Plug	1
†9	95-9199	O-Ring	1
†10	99-0815	O-Ring Dust Seal	1
†11	99-0813	Seal	1
†12	41003	Diaphragm	1
13	95-9193	End Cap Assembly	1
14	95-9202	Double Hose Barb	1

Ref.	Part No.	Description	Qty.
15	95-9201	Single Hose Barb	1
16	95-9187	Nozzle Dust Cap (Incl. Ref. # 17)	22
17	40998	Seat Gasket	33
18	95-9186	Nozzle Cap, 90° (Incl. Ref. # 17)	11
19	95-9188	TTJ10 Turbo TurfJet (Std.)	11
	95-9221	TTJ2 Turbo TurfJet (Optional)	11
	95-9222	TTJ4 Turbo TurfJet (Optional)	11
	95-9223	TTJ5 Turbo TurfJet (Optional)	11
	95-9224	TTJ6 Turbo TurfJet (Optional)	11
	95-9225	TTJ8 Turbo TurfJet (Optional)	11
	95-9226	TTJ15 Turbo TurfJet (Optional)	11
20	95-9203	Hose Barb x 1/2" NPT	1
21	95-9314	90° Elbow, 1/2" FPT x 3/4" H.B.	1
22	95-9185	Turret Body Clamp	11
23	92-0045	Hose Clamp, 3/4" Hose	22
24	41340	Boom Hose, 3/4" x 50"	3
25	40506	Jumper Hose, 3/4 x 19"	8
26	99-0814	Pivot Pin, 303 S.S.	1

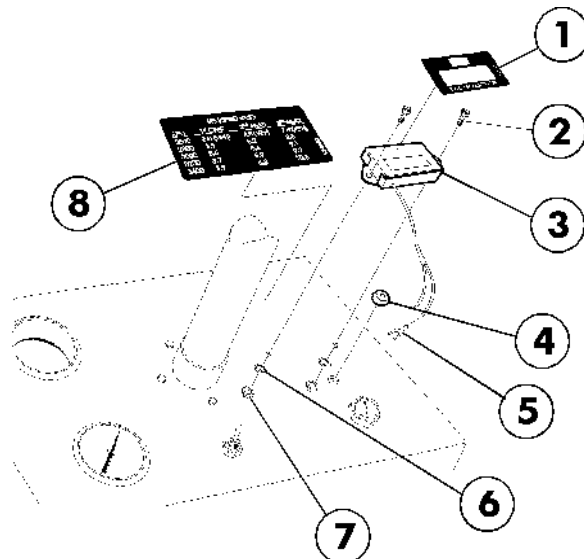
† Denotes parts in Seal Kit # 99-0816

## STANDARD ELECTRIC SPRAY SYSTEM TANK (MULTI-PRO 1100)



1094-2

## TACHOMETER



## STANDARD ELECTRIC SPRAY SYSTEM TANK (MULTI-PRO 1100)

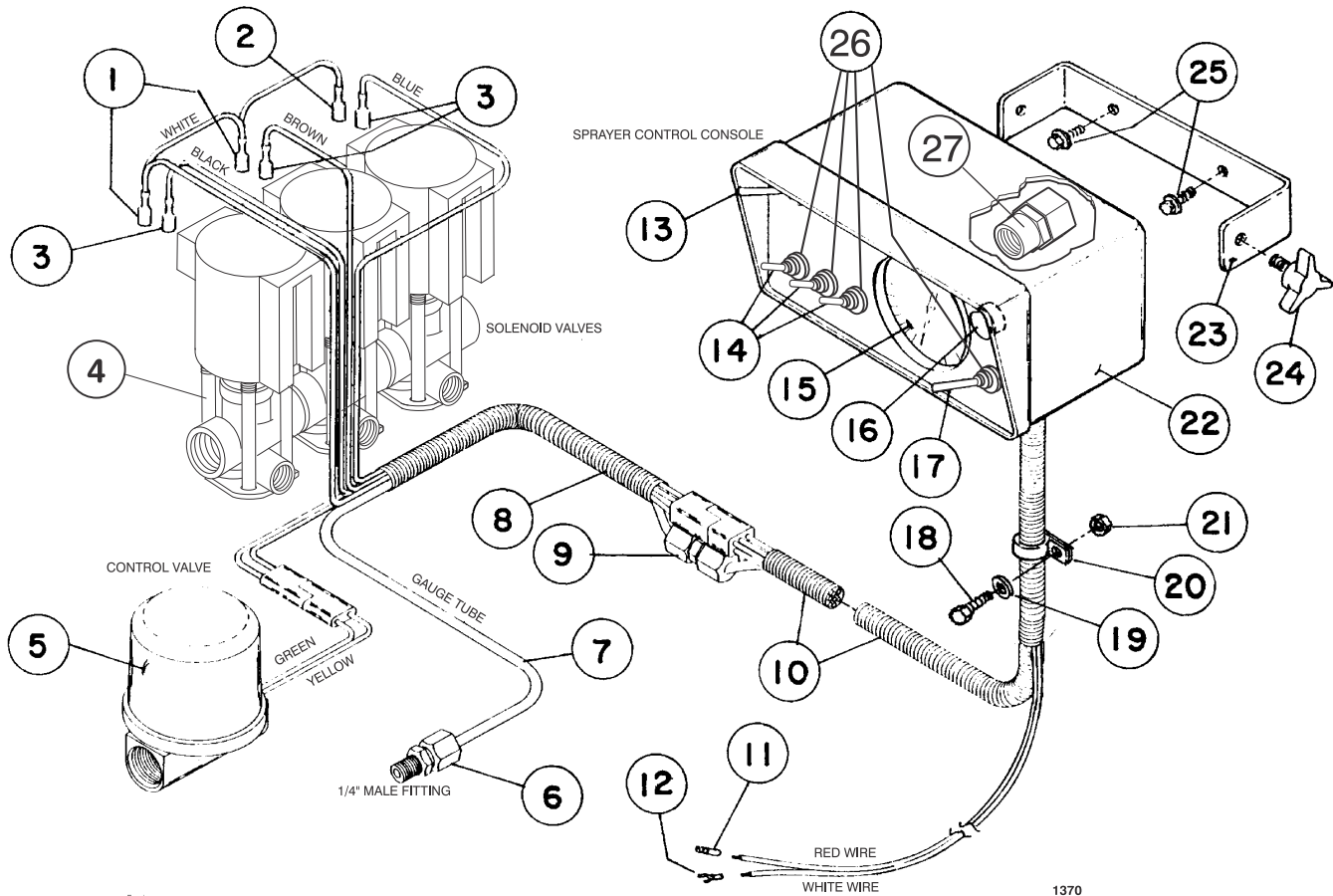
Ref	Part No.	Description	Qty
1	42983	Hold-In Brace Assembly	2
2	22-12-AJD	Hex Nut, 5/16 NC	6
3	24-10-BD	Flat Washer, 5/16	4
4	92-0010	U-Bolt, 1/4 NC	4
5	42198	Rubber Hold-Down	3
6	42259	Boom Hold-In Assembly (left)	1
7	22-11-AJFD	Lock Nut, 1/4 NC	8
8	25-25-AGD	Carriage Bolt, 5/16 NC x 3/4	6
9	42880	Tank Band Assembly (front)	1
10	92-3976	Clean Water Wash Tank	1
	93-0828	Spigot (f/w 92-3976 Tank)	1
11	20-26-AGD	HHCS, 5/16 NC x 1"	2
12	92-3969	Wash Tank Bracket	1
13	42316	Boom Hold-In Assembly (right)	1
14	42452	Protective Cap	2
15	43013	Tank Band Assembly (rear)	1
16	23-10-GD	Lock Washer, 5/16	2
17	42879	Tank Assembly - 160 Gals.	1
18	42322	Tank Lid (f/w Tank Assy.)	1
	92-3765	Vent Cap	1
19	42859	Breather Gasket (f/w Tank Assy.)	1
20	42323	Filler Basket (f/w Tank Assy.)	1
21	43069	Stand Up Assembly	1
22	43064	Knife Valve	1

Ref	Part No.	Description	Qty
23	43068	Fly Nut, 2" NPT	1
24	43067	Sealing Washer	1
25	43066	Bulk Head, 2" NPT	1
26	41800	Tank Fitting, 1" NPT (f/w Tank Assy)	1
27	41307	90° St. Elbow, 1" NPT	1
28	41308	Hose Coupling, 1" MPT x 1-1/4" HB	1
29	42946	Agitator Hose, 1/2" x 42"	1
30	96609	Hose Clamp	2
31	42981	Agitator Tube Assembly	1
	42842	Barbed Elbow	1
32	41969	Reducer Bushing, 3/4" MPT x 1/2" FPT	1
33	40487	Female Quick Coupler, 1/2" HB	1
34	41801	Tank Fitting, 3/4" NPT (f/w Tank Assy)	1
35	22-13-AJD	Hex Nut, 3/8" NC	4
36	43014	Backing Strap	4
37	92-3525	Heat Shield	1
38	20-24-AGD	HHCS, 5/16 NC x 3/4	2
39	41798	Anti Vortex Fitting, 1-1/4" NPT	1
40	22-15-AJD	Hex Nut, 1/2" NC	2
41	23-13-GD	Lock Washer, 1/2"	2
42	20-86-AGD	HHCS, 1/2 NC x 1-1/4"	2
43	42878	Tank Saddle Assembly	1

## TACHOMETER

Ref	Part No.	Description	Qty
1	93-1021	Tachometer Decal	1
2	3250-4	HHMS #8-32UNC x 5/8"	2
3	93-1022	Tachometer	1
4	93-1086	Grommet	1

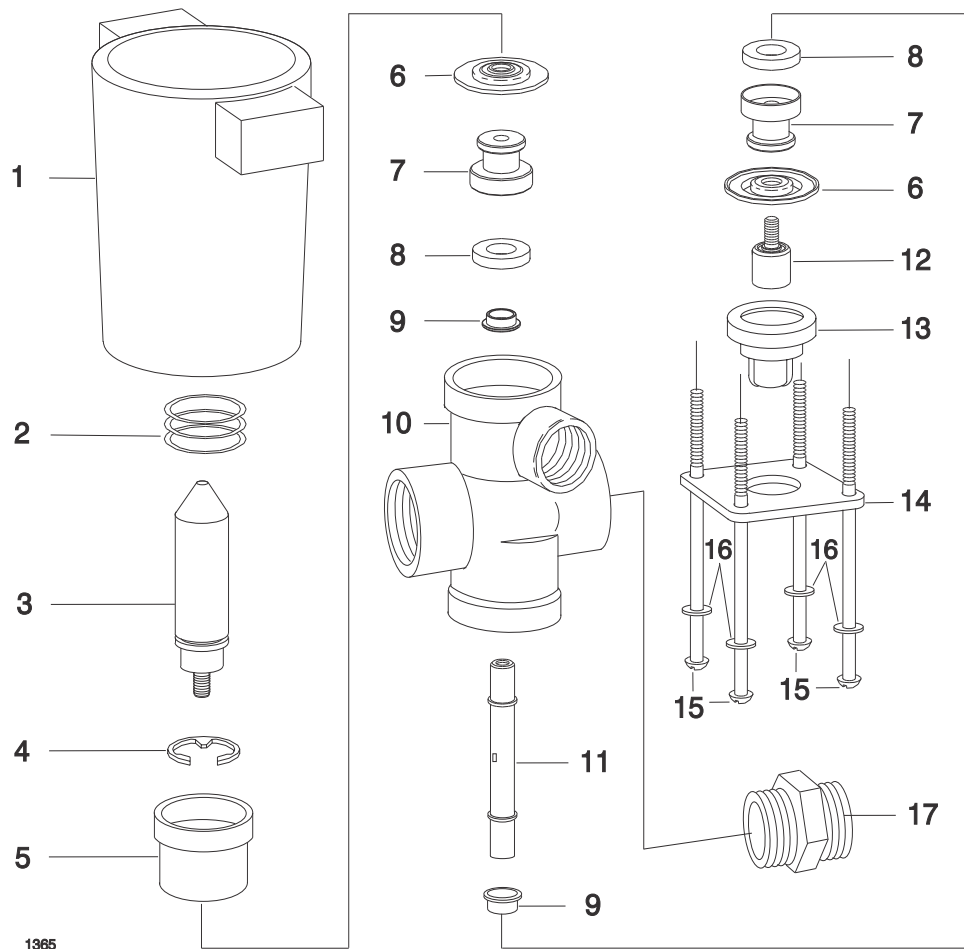
Ref	Part No.	Description	Qty
5	93-1091	Spade Terminal	1
6	3253-17	Lock washer #8	2
7	3217-25	Hex nut #8-32UNC	2
8	93-0920	RPM to Speed Decal	1



## CONTROL CONSOLE

Ref	Part No.	Description	Qty
1	42933	12-10 AWG Female Terminal	2
2	42934	16-14 AWG Female Terminal	1
3	42932	Insulated Female Terminal	3
4	99-0530	Solenoid Valve Assembly	1
	99-0536	Single Solenoid	A/R
5	42936	Control Valve	1
6	42931	Male Fitting	1
7	42930	Gauge Tubing	1
8	42935	72" Cable Assy (Sol. Hook-Up)	1
9	42929	Union Fitting	1
10	42313	96" Cable Assy (Encl. Hook-Up)	1
11	92-0257	Push-On Terminal	1
12	42928	#10 Spade Terminal	1
13	42923	Master Switch	1
14	42921	Boom Switch	3

Ref	Part No.	Description	Qty
15	42924	Pressure Gauge (PSI)	1
16	42925	Fuse Holder	1
	42926	15 - AMP Fuse	1
17	42927	Pressure Adjust Switch	1
18	322-5	H.H.C.S. 5/16 NC x 3/4	1
19	3256-23	Flat Washer, 5/16	1
20	41230	Hose Clamp	1
21	3217-6	Hex Nut, 5/16 NC	1
22	42937	Console	1
23	42920	Mounting Bracket	1
24	42922	Knob	2
25	32104-95	Hex Washer Hd. Self-Tap Screw, 1/4 NC x 5/8	2
26	92-8531	Switch Boot	5
27	93-1042	Female Gauge Fitting	1

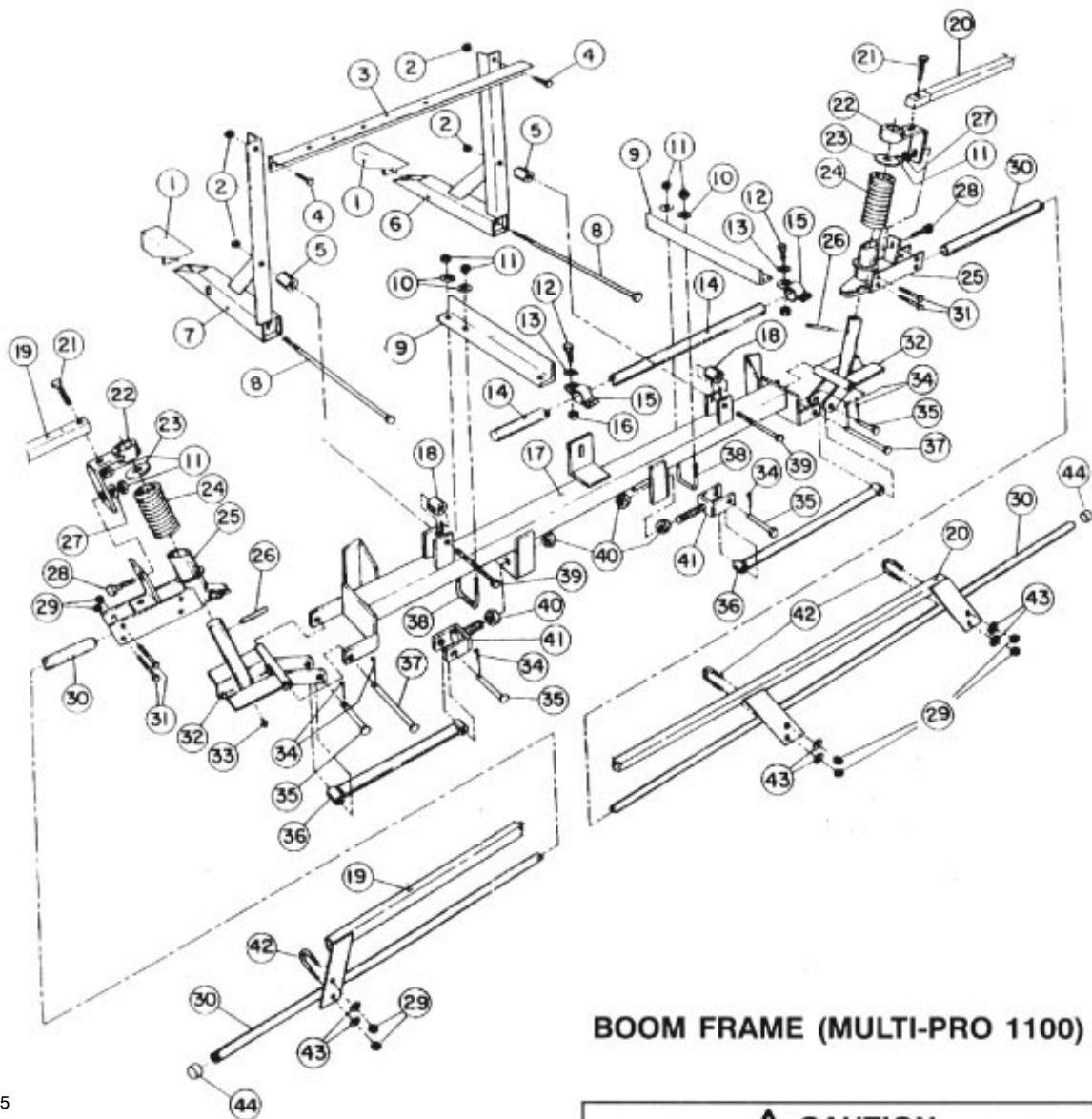


## SOLENOID VALVE (99-0536)

Ref.	Part No.	Description	Qty.
1	95-9317	Coil Ass'y - Nylon Encapsulated	1
2	†	Spring - Stainless Steel	1
3	95-9318	Armature - Stainless Steel	1
4	95-9319	Retaining Ring - Steel, Plated	1
5	93-1031	Upper Diaphragm Housing (blk)	1
6	†	Diaphragm - Viton	2
7	93-1034	Seal Washer Retainer - S.S.	2
8	†	Seal Washer - Viton	2

Ref.	Part No.	Description	Qty.
9	42136	Spacer - Stainless Steel	2
10	93-1035	Body - Polypropylene (black)	1
11	92-1036	Stem - Stainless Steel	1
12	92-0367	Lower Diaphragm Piston - S.S.	1
13	93-1037	Lower Diaphragm Housing (blk)	1
14	93-1038	Bottom Plate, Steel (blk)	1
15	93-1039	Screw - Stainless Steel	4
16	99-0545	Lock Washer - Type 18-B, S.S.	4
17	42884	Connecting Nipple	2

† Indicates parts included in Viton Seal Kit.  
Order Part No. 99-0546.



**BOOM FRAME (MULTI-PRO 1100)**

**⚠ CAUTION**

THE TWO SPRINGS (REF #24) ARE UNDER APPROX. 150 LBS. OF PRESSURE. BE VERY CAUTIOUS WHEN REMOVING THE SPRING PINS (REF #26) FOR REMOVAL OF THE SPRINGS.

**IMPORTANT! THE TWO BOLTS (REF #8) MUST BE TORQUED TO 50 FT. LBS.**

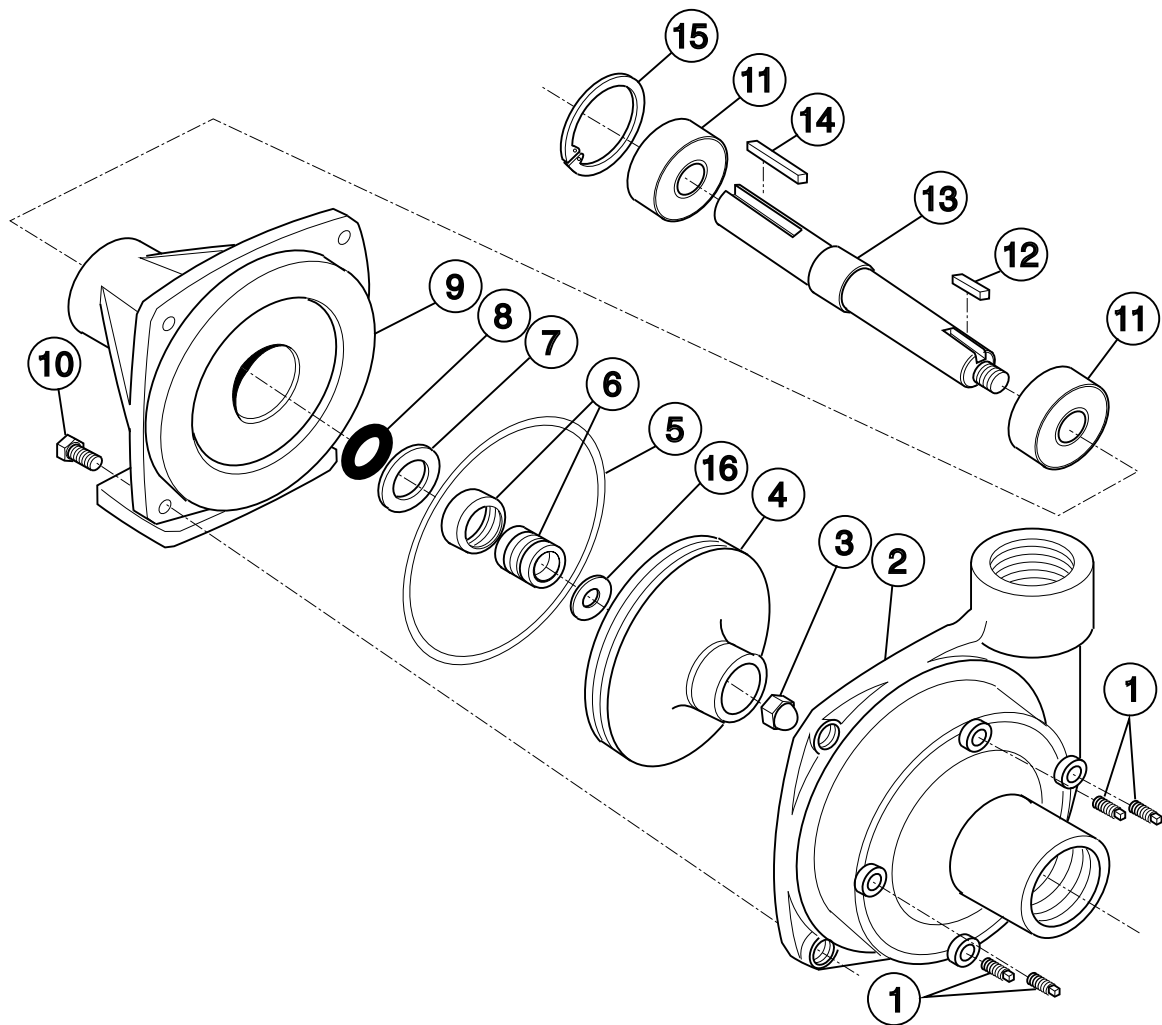
## BOOM FRAME (MULTI-PRO 1100)

Ref	Part No.	Description	Qty
1	42223	Tube Wedge Assy	2
2	32153-5	Lock Nut, 1/2 NC	4
3	42225	Cross Support Angle	1
4	325-5	HHCS, 1/2 NC x 1-1/4"	2
5	42258	Spacer Tube, 1-1/4" lg.	2
6	42222	Boom Mount Assy	1
7	42217	Boom Mount Assy	1
8	42199	HHCS, 1/2 NC x 18"	2
9	42234	Center Boom Angle	2
10	3256-3	Flat Washer, 5/16	4
11	3217-6	Hex Nut, 5/16 NC	9
12	323-6	HHCS, 3/8 NC x 1"	2
13	3256-4	Flat Washer, 3/8	2
14	40493	Center Boom Pipe	1
15	40494	Clamp Assy	2
16	32153-2	Lock Nut, 3/8 NC	2
17	42227	Main Frame Tube-Welded Assy	1
18	42257	Spacer Tub, 1" Long	2
19	42711	Boom Support Assy - LH	1
20	42710	Boom Support Assy - RH	1
21	322-7	HHCS, 5/16 NC x 1-1/2"	2
22	42707	Support Bracket Assy	2
23*	3256-62	Flat Washer, 1" S.A.E.	2

\* Denotes parts that are available in an assembled unit.

Order #42840 Breakaway Assembly

Ref	Part No.	Description	Qty
24*	42196	Compression Spring	2
25*	42706	Breakaway Pivot Assy	2
26*	321121-78	Spring Pin, 1/4 x 2"	2
27	3256-23	Flat Washer, 5/16 S.A.E.	3
28	3230-1	Carriage Bolt, 5/16 NC x 3/4	2
29	32153-4	Lock Nut, 1/4 NC	16
30	42282	Extension Boom Pipe Assy	2
31	321-10	HHCS, 1/4 NC x 1-3/4"	8
32*	42243	Hinge Assy	2
33*	361011	Grease Fitting	2
34	3272-11	Cotter Pin, 1/8 x 1"	6
35	42195	Clevis Pin, 1/2 x 2"	4
36	42240	Strut Assy	2
37	42194	Clevis Pin, 1/2 x 4-1/2"	2
38	301950	U-Bolt, 5/16 NC	2
39	325-17	HHCS, 1/2 NC x 4"	2
40	3217-11	Hex Nut, 5/8 NC	4
41	42237	Adjustable Clevis Assy	2
42	92-0010	U-Bolt, 1/4 NC	4
43	3256-2	Flat Washer, 1/4	8
44	92-8420	Boom Cap	4
45	2412-104	"R" Clamp	1
46	3253-4	5/16 Lockwasher	1
47	322-3	Cap Screw 6/16 x 3/4	1



### CENTRIFUGAL PUMP (93-0848)

Ref	Part No.	Description	Qty
1	42084	Drain Plug	4
2	93-0922	Pump Casting	1
3	42086	Impeller Nut	1
4	93-0923	Impeller (Polypropylene)	1
5	42089	O-Ring	1
6	42088	Mechanical Seal - Viton	1
7	93-0924	Seal Retainer	1
8	42092	Slinger Ring	1

Ref	Part No.	Description	Qty
9	93-0925	Mounting Flange	1
10	323-6	Bolt	4
11	93-0927	Ball Bearing	2
12	93-0928	Key	1
13	93-0929	Pump Shaft	1
14	93-0930	Key	1
15	42093	Bearing Retainer	1
16	93-0931	Gasket	1
*	94-8520	Seal Kit (Incl. O-ring & and Seal)	AR