



MODEL NO. 07224-90001 & UP
 MODEL NO. 07223-90001 & UP
 MODEL NO. 07269-90001 & UP

OPERATOR'S, SET-UP,
 AND PARTS
 CATALOG

INDUSTRIAL WORKMAN® KIT

To assure maximum safety, optimum performance, and to gain knowledge of the product, it is essential that you or any other operator of this Vehicle read and understand the contents of this manual before the engine is ever started. Pay particular attention to the SAFETY INSTRUCTIONS highlighted by the triangular safety alert symbol.

The safety alert symbol means CAUTION, WARNING or DANGER - personal safety instruction. Failure to comply with the instruction may result in personal injury.

SAFETY INSTRUCTIONS

Keep this Operator's Manual in the plastic tube behind the operator seat.

It is very important that all persons operating this equipment have easy access to these instructions at all times!

Carefully read and follow the "Maintenance" Instructions that are provided with this equipment and the Safety Instructions in the Workman® Vehicle Operator's Manual.

RECOGNIZE SAFETY INFORMATION

This safety-alert symbol is used to call attention to a **dangerous** situation, which could result in serious injury or death to the operator or a bystander.

Safety, mechanical and some general information in this manual are emphasized. **DANGER**, **WARNING** and **CAUTION** identify safety messages. Whenever the triangular safety symbol appears, it is followed by a safety message that must be read and understood. For more details concerning safety, read the Safety Instructions on this page and page 2. **IMPORTANT** identifies special mechanical information and **NOTE** identifies general information worthy of special attention.

These instructions are provided as a guide for the safe operation and maintenance of this equipment. However, the operator's personal safety, as well as those persons in the work area, will depend on the careful actions and good judgement of the operator. **To reduce the potential for injury or death, comply with the following safety instructions.**

BEFORE OPERATING:

1. Operate this machine only after reading and understanding the contents of this manual and the Workman® Vehicle Operator's manual. A replacement manual is available by sending complete model and serial number to:
 Hahn Equipment Co., 1625 N. Garvin St.,
 Evansville, IN 47711.

2. Keep all shields, safety devices and decals in place. If a shield, safety device or decal is malfunctioning, illegible or damaged, repair or replace it before operating the machine.

WARNING

IMPROPER TOWING WITH THIS VEHICLE MAY CAUSE SERIOUS PERSONAL INJURY OR DEATH. TOWING AT EXCESSIVE SPEEDS COULD CAUSE VEHICLE TO LOSE STEERING CONTROL.

- Never tow vehicle faster than 5 MPH (8 km/h).
- Never exceed maximum tongue weight of 400 LBS (181 KG.).
- Never exceed maximum trailer weight
 - Without trailer brakes
1500 LBS (680 KG.)
 - With trailer brakes
3500 LBS (1587 KG.)
- Read, understand, and follow Safety Instructions below and in Workman Operator's Manual before operating vehicle.

SAFETY INSTRUCTIONS

WARNING

- Do not exceed capacity. Maximum capacity of operators, attachments and cargo is 1800 LB (4000 LB. GVW) or 800Kg (1800Kg GVW).
- Always distribute cargo load evenly on bed with center of gravity of load forward of rear axle.

WHILE OPERATING:

3. Always follow Workman[®] Vehicle operating instructions in Workman[®] Vehicle Operator's Manual.

4. DO NOT OVERLOAD THE VEHICLE. Never exceed maximum Operator and Pay Load Capacity of 1800 lb and maximum Gross Vehicle Weight of 4000 lb. Failure to position loads carefully can result in their shifting or tipping over. Distribute loads evenly, as low as possible, with center of gravity forward of rear axle. Secure load using Lifting Lugs (Figure 3).

5. Make certain everyone is clear of the machine before loading or starting the engine to move the vehicle.

6. Before backing up, look to the rear and assure no one is behind. Back up **slowly**.

BED REMOVAL PROCEDURE:

WARNING

- Base Weight for Bed of Industrial Workman[®] kit is 350 lb.
- Always be sure Lifting device is capable of lifting bed and any attached accessory to avoid personal injury or death.

6. For removal of the cargo bed to preform engine service, adhere to the following procedure:

A. Stop the Vehicle and set the parking brake.

B. Shut off the vehicle's engine and remove key from ignition.

C. Disengage all power and wait until all moving parts have stopped.

D. Remove all cargo.

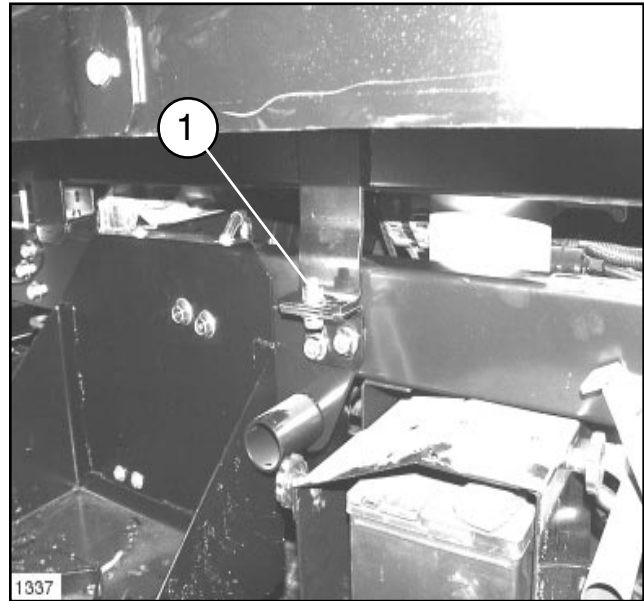


FIG. 1

1. Front Securing Bolt

E. Remove welding gas bottles (if equipped)

F. Remove bed's Front Securing Bolts, shown in Figure 1.

G. Remove Rear Securing Pins, shown in Figure 2.

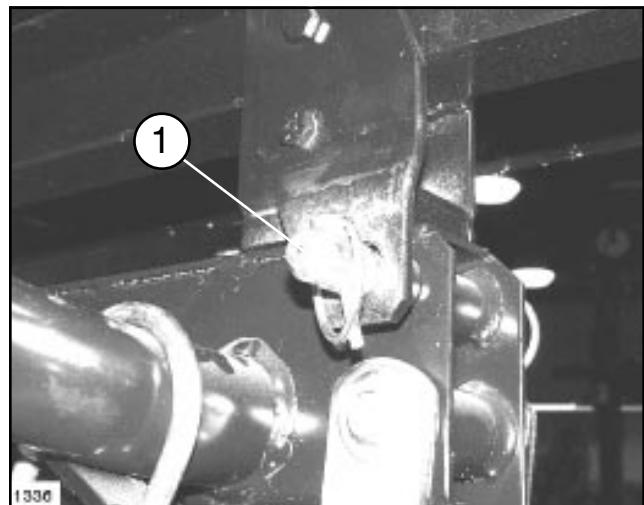


FIG. 2

1. Rear Securing Pin

H. Lift the cargo bed from four corners evenly from the vehicle's frame, using Lifting Lugs as shown in Figure 3, and set aside.

! SAFETY INSTRUCTIONS

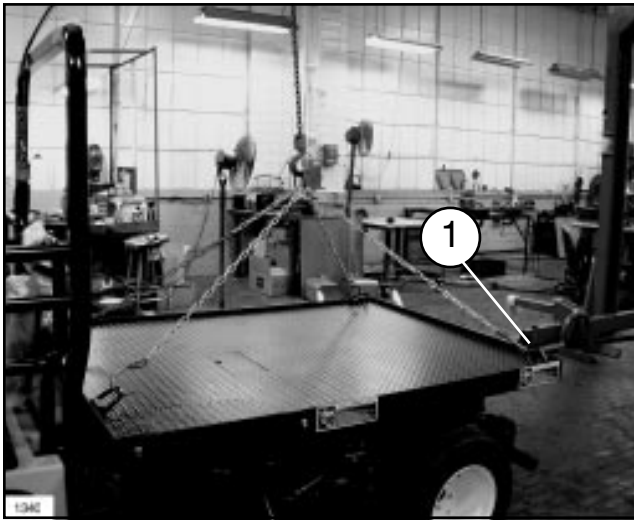


FIG. 3
1. Lifting Lugs

1. When service is complete, reinstall the cargo bed in its original position and secure with the pins at the rear and the bolts at the front. Refer to Torque Specs.

8. Keep all nuts, bolts and other fasteners tightened securely. Replace any shields removed during servicing or adjustments.

9. To be sure of optimum performance and safety, always purchase genuine TORO replacement parts and accessories. Replacement parts and accessories made by other manufacturers could be dangerous. Altering this equipment in any manner may affect the machine's operation, performance, stability, durability or its use may result in personal injury or death. Such use could void the product warranty by the TORO Company.

SAFETY & INSTRUCTION DECALS

The following safety and instruction decals are installed on the INDUSTRIAL WORKMAN® KIT. If any become damaged or illegible, replace them. Decals and part numbers are listed below and in the parts catalog. Order replacements from your Authorized Toro Distributor.



! WARNING

IMPROPER USE OF THE CARGO BED MAY CAUSE SERIOUS PERSONAL INJURY OR DEATH.

TO AVOID PERSONAL INJURY:

- NEVER LIFT ENTIRE VEHICLE BY THE BED LIFTING LUGS.
- NEVER PIVOT BED UP ON REAR PINS.
- REMOVE ALL SECURING PINS, BOLTS AND ENTIRE BED FOR SERVICE.
- ALWAYS LIFT BED AT ALL FOUR CORNERS.
- ALWAYS REMOVE LOOSE CARGO BEFORE REMOVING BED.
- DO NOT EXCEED VEHICLE CAPACITY. MAXIMUM CAPACITY OF OPERATORS, ATTACHMENTS AND CARGO IS 1800 LBS. (4000 LBS. GVW).
- ALWAYS DISTRIBUTE CARGO LOAD EVENLY ON BED WITH CENTER OF GRAVITY OF LOAD FORWARD OF REAR AXLE.

99-0488

Four corners of Industrial Bed
(Part No. 99-0488)

HITCH RATING

**MAXIMUM TONGUE WEIGHT:
400LBS (181KG.)**

**MAXIMUM TRAILER WEIGHT:
WITHOUT TRAILER BRAKES;
1500 LBS (680KG.)**

**WITH TAILER BRAKES;
3500 LBS (1587 KG.)**

92-2724

ON AXLE TUBE
(Part No. 92-2724)

MAINTENANCE



WARNING

IMPROPER USE OF THE CARGO BED MAY CAUSE SERIOUS PERSONAL INJURY OR DEATH.

- Never lift entire vehicle by the bed Lifting Lugs.
- Never pivot bed on rear pins.
- Remove all securing pins and bolts and remove bed for service.
- Always remove all cargo (including welding gas bottles) before removing bed.
- Always lift bed at all four corners.
- Do not exceed capacity. Maximum capacity of operators, attachments and cargo is 1800 LB (4000 LB. GVW) or 800kg (1800kg GVW).
- Always distribute cargo load evenly on bed with center of gravity of load forward of rear axle.
- Read, understand, and follow Safety Instructions and Bed Removal Procedure before servicing vehicle.

SERVICE INSTRUCTIONS:

1. Instructions for vehicle engine service

A. Diesel Unit:

1. Check oil on lower right side of engine without lifting the cargo bed.
2. Add oil to engine through Access Door in bed. See Figure 4.

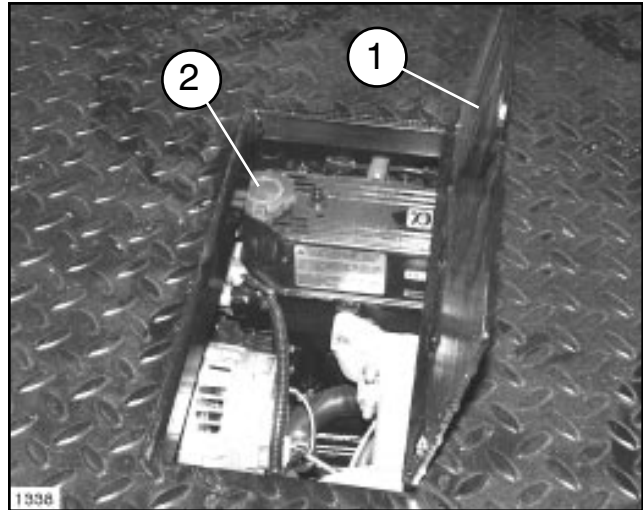


FIG. 4: Diesel Engine

1. Access door
2. Oil fill cap

- B. Gasoline and Liquid Propane Gas units:**
Check oil and add oil through Access Door in bed. See Figure 5.

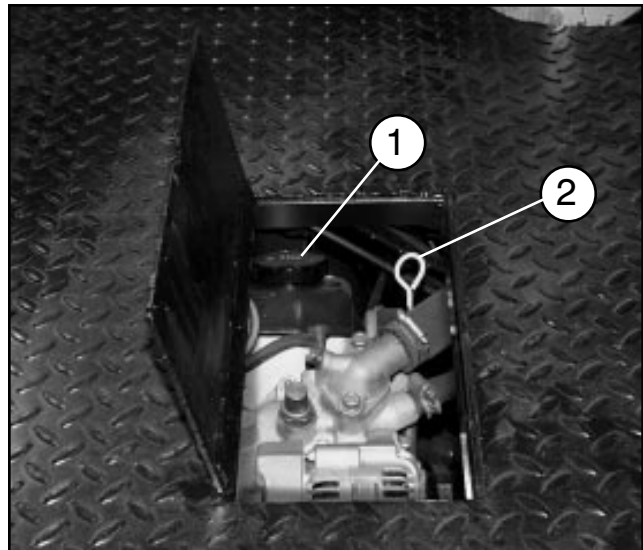


FIG. 5: Gas/Liquid Propane Gas Engine

1. Oil filler cap
2. Oil check stick

MAINTENANCE

C. For all engine bay service requiring the removal of the cargo bed, adhere to the previous removal procedures in Maintenance Safety Instructions on Page 2.

D. Refer to Workman® Operator's Manual for service instructions.

2. Installation of welding gas bottles (for units equipped with optional Acetylene Tray Kit Model 07224). See page 9 for SET-UP instructions of Acetylene Tray Kit.

A. Remove cover plate from industrial bed.

B. Remove fasteners securing the Bottle Restraint Plate at the front left corner of the cargo bed and set plate aside.

C. Place Oxygen and Acetylene Bottles onto the Bottle Tray as shown in Figure 5. Tray is designed for a 38" High Acetylene Tank with a diameter of 8 1/2" and a 48" high Oxygen Tank with a diameter of 7 1/2".

D. Secure the bottles to the bed with the bottle restraint plate. Reinstall 1/2" Flange Lock fasteners using a torque load of 75 ft•lb (102 N•m).

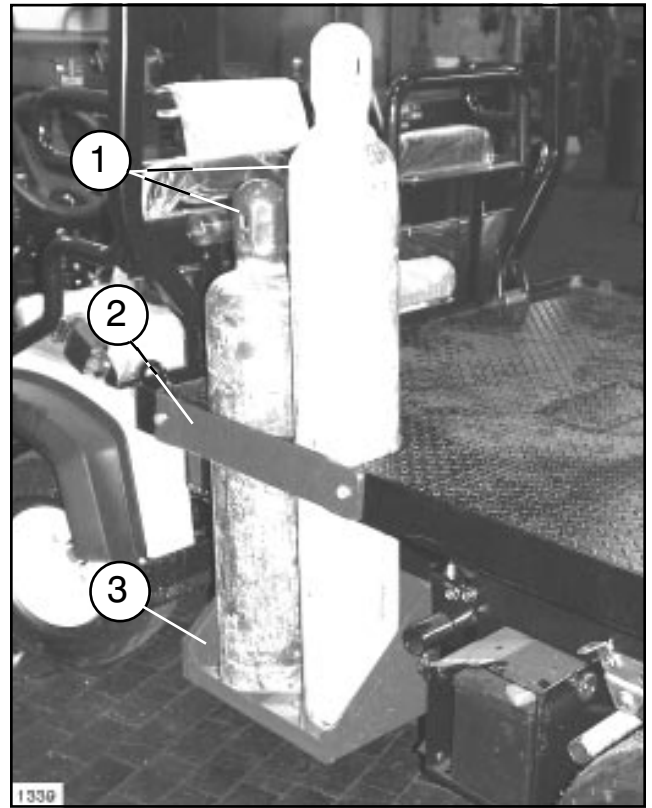


FIG. 5

1. Oxygen and Acetylene Bottles
2. Bottle Restraint plate 3. Optional Bottle Tray

TORQUE SPECIFICATIONS

Bolt Size	in•lb	N•cm
1/4"	100	1125
Bolt Size	ft•lb	N•m
3/8"	30	41
1/2"	75	102

SET-UP

NOTE: Refer to Torque Specifications on page 5 for all Fasteners.

SKID PLATE ASSEMBLY 99-0806: (Requires 99-0805 Bumper Assembly)

1. Mount (99-0465) Skid Plate to Bumper Assembly, using two 3/8"-16 x 1" Lg. Flange Lock Hex. Hd. Cap Screws. Slide the two screws through the welded Bumper Bracket and through the two Skid Plate mounting holes. See Illustration on page 11, (Model No. 99-0805 and 99-0806) Items 1 and 3. Loosely place a 3/8" Flange Lock Nut on each screw.

2. The (99-0466) Adjustment Plate can be located in two different places on the Skid Plate. The mounting depends on which type of unit you are installing the Adjustment Plate on. The Gasoline unit's Adjustment Plate is located all the way to the right on the Skid Plate. The Diesel unit's Adjustment Plate is located all the way to the left. See Illustration on page 11, (Model No. 99-0806) Item 2.

3. Making sure (99-0466) Adjustment Plate has the welded nuts up toward the unit, slide Adjustment Plate over the Workman® unit's Oil Pan Guard, (this Guard has two holes for mounting the Adjustment Plate) secure it into place using two 3/8"-16 x 5/8" Lg. Hex. Hd. Cap Screws. **IMPORTANT: Make sure these screws are not too long and do not rupture the oil pan when tightening.** See FIG. 3. Tighten all screws and nuts securely.

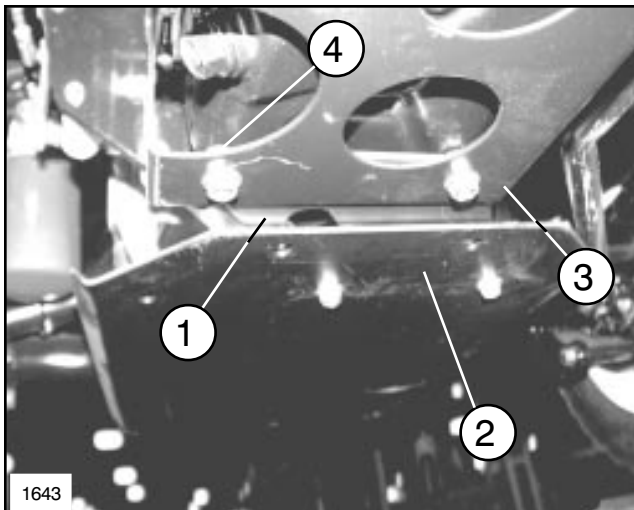


FIG. 3

- | | |
|---------------------|------------------|
| 1. Adjustment Plate | 3. Oil Pan Guard |
| 2. Skid Plate | 4. Welded Nut |

4. Lift (99-0465) Skid Plate up to the (99-0466) Adjustment Plate. Mount the two Plates together using two 3/8"-16 x 1" Lg. Flange Lock Hex. Hd. Cap Screws and 3/8" Flange Lock Nuts. The Assembly is now complete.

NOTE: Refer to Torque Specifications on page 5 for all Fasteners.

TANK GUARD ASSEMBLY:

1. Position Tank Guard over the Fuel Tank. Using three 3/8"-16 x 1" Lg. Flange Lock Hex. Hd. Cap Screws to mount the Tank Guard Assembly, place the screws into the three existing insert holes in Workman® unit. These existing inserts are located behind the Fuel Tank on the Rear Channel (Frame) of the Workman® unit. See FIG. 4. Tighten screws securely.

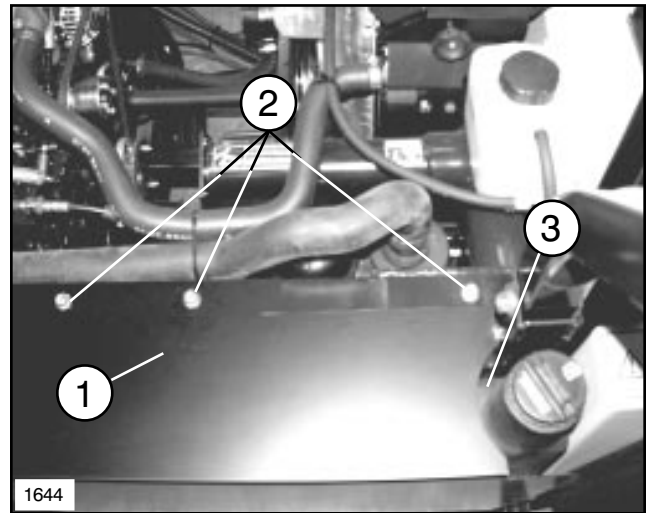


FIG. 4

- | | |
|-------------------------------|--------------|
| 1. Tank Guard Ass'y | 3. Fuel Tank |
| 2. Existing Inserts' Location | |

2. Install (99-0463) Guard Brace Strap with the 3/8"-16 x 1" Lg. Flange Lock Hex. Hd. Cap Screw and 3/8" Flange Lock Nut. Attach the Guard Brace Strap on top of bottom panel of Tank Guard. Slide the screw through Strap and through Tank Guard. See Illustration on page 10, Items 5 and 6. Tighten nut onto screw, leaving nut finger tight. The other end of the Strap should be attached to the bottom Channel of the Workman® unit. Using a 3/8"-16 x 1" Lg. screw, slide screw through the Workman® unit Channel and through the Strap, then place nut on screw. Securely tighten both screws and nuts holding the Strap. The Assembly is now complete.

SET-UP



WARNING

- **Base Weight for Bed of Industrial Workman[®] kit is 350 lb.**
- **Always be sure Lifting device is capable of lifting bed and any attached accessory to avoid personal injury or death.**
- **Never lift entire vehicle by the bed Lifting Lugs.**
- **Always remove all cargo (including welding gas bottles) before lifting bed.**
- **Never pivot bed on Rear Pins.**
- **Lift the cargo bed from four corners evenly, using Lifting Lugs.**
- **Do not exceed capacity. Maximum capacity, attachments and cargo is 1800 LB (4000 LB. GVW) or 800kg (1800 GVW).**
- **Read, understand, and follow Safety Instructions and Bed Removal Procedure before servicing vehicle.**

NOTE: Refer to Torque Specifications on page 5 for all Fasteners.

BED ASSEMBLY 07269:

1. Install four (99-9719) Wear Blocks on the Flatbed Assembly using eight (two for each Block) 1/4"-20 x 3/4" Lg. Plain Hd. Screws and eight 1/4" Flange Lock Nuts. See Illustration on page 10, (Model No. 07269) Items 2, 3 and 4. Tighten screws securely. The screw heads should be recessed into the Wear Blocks' holes.

2. Attach four (99-0451) Rear Pin Plates on the (99-0433) Flatbed Assembly using four 1/2"-13 x 4" Lg. Hex. Hd. Cap Screws and four 1/2" Flange Lock Nuts. The flat part of the plate should be toward the back of the Flatbed Assembly. See Illustration on page 10, (Model No. 07269) Item 21. Finger tighten screws and nuts.

3. Remove the four existing (two each side) 1/2"-16 x 1- 1/4" Lg. Flange Lock Hex. Hd. Cap Screws in the Workman[®] unit. See FIG. 5. Install two (99-2667) Attachment Mount Brackets by using the same four 1/2" Flange Lock Hex. Hd. Cap Screws and 1/2" Flange Lock Nuts that were removed. Finger tighten screws and nuts.

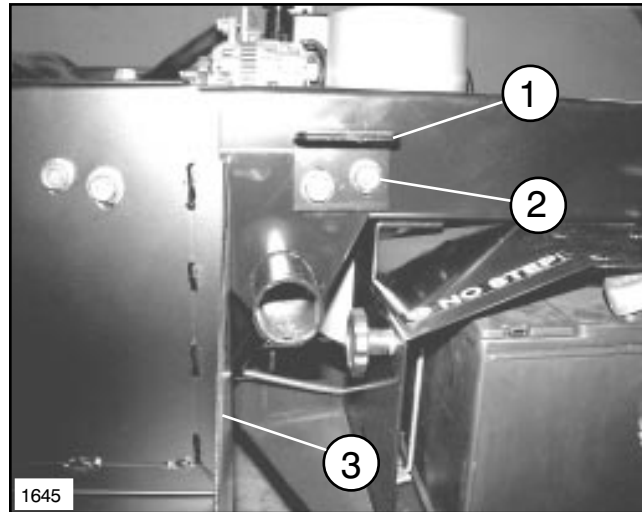


FIG. 5

1. Attachment Mount Bracket
2. Existing 1/2" Flange Lock Hex. Hd. Cap Screw
3. Bottle Tray Kit Ass'y (For Reference Only)

4. Lower (99-0433) Flatbed Assembly onto the Workman[®] unit, making sure Rear Pin Plates (99-0451) clear the channel on the Workman[®] unit. After positioning bed on unit, slide two (92-1233) Clevis Pins through the Rear Pin Plates (99-0451) and through the Workman[®] unit's Rear Channel (Rail). Lock (92-1233) Clevis Pins into place by using four (92-1298) Lynch Pins. Tighten Rear Pin Plates securely.

5. Secure (92-2667) Attachment Mount Brackets to (99-0433) Flatbed Assembly using two 1/2"-16 x 1- 1/2" Lg. Flange Lock Hex. Hd. Cap Screws and two 1/2" Flange Lock Nuts. Make sure Attachment Mount Brackets are flush with Mounting Brackets on Flatbed Assembly. See FIG. 6. Tighten the six screws and nuts securely, at this point the Bed should be secure to the Workman[®] unit.

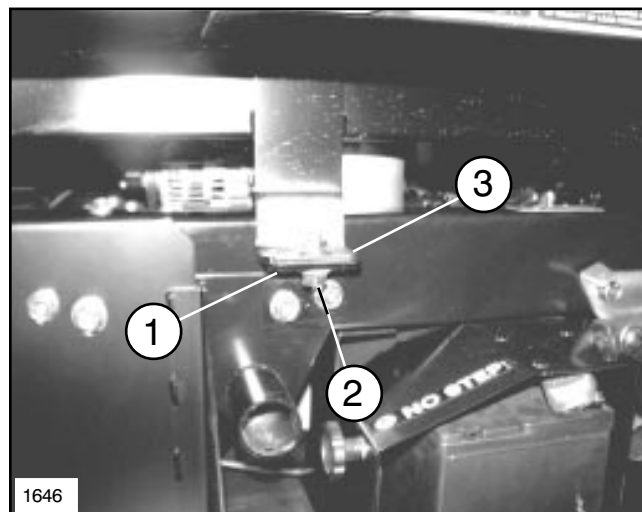


FIG. 6

1. Attachment Mount Bracket
2. 1/2" x 1- 1/2" Lg. Flange Lock Hex Hd. Cap Screw
3. Flatbed Mounting Bracket

SET-UP

NOTE: Refer to Torque Specifications on page 5 for all Fasteners.

TRAY KIT ASSEMBLY 07224:

1. Remove the (99-0453) Bottle Restraint Assembly from the Flatbed Assembly by removing the center 1/4" Flange Lock Nut from the 1/4" x 3/4" Lg. Hex. Hd. Cap Screw that secures the (99-0455) Cover Plate Assembly to the Bottle Restraint Assembly. Remove the two 1/2" x 1-1/2" Lg. Flange Lock Hex. Hd. Cap Screws from each end of the Bottle Restraint Assembly. Set the Bottle Restraint Assembly aside for future use.

2. Remove the (99-0455) Cover Plate Assembly from the (99-0433) Flatbed Assembly by sliding the Cover Plate out.

3. Mount (99-0476) Bottle Tray to the Workman® unit using two 3/8"-16 x 1" Lg. Flange Lock Hex. Hd. Cap Screws. Insert screws through the two holes in the top of Bottle Tray and into existing inserts in the Workman® unit's Rear Channel. See FIG. 7. Tighten screws securely.

4. Slide two 3/8"-16 x 1" Lg. Flange Lock Hex. Hd. Cap screw through the lower two holes in Bottle Tray and through the two holes in (99-0480) Tray Support Strap. Using two 3/8" Flange Lock Nuts and the screws secure Strap to Bottle Tray. See Illustration on page 10, (Model No. 07224) Items 7 and 8.

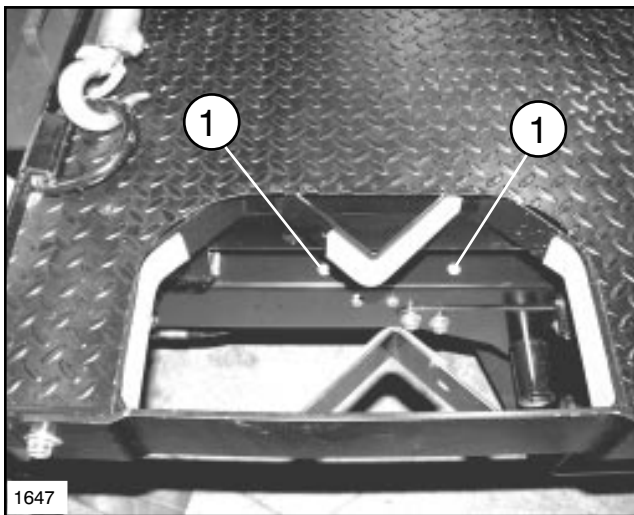


FIG. 7

1. Existing Inserts

5. If unit has an existing (99-0463) Guard Brace Strap installed for the Fuel Tank Guard, remove nut from screw that mounts the Guard Brace Strap to the Workman® unit. Slide the end hole of (99-0480) Tray Support Strap onto the 3/8"-16 x 1" Lg. Flange Lock Hex. Hd. Cap Screw

and reattach nut. Tighten securely. If unit does not have the (99-0463) Guard Brace Strap, then use one 3/8"-16 x 1" Lg. Flange Lock Hex. Hd. Cap Screw and one 3/8" Flange Lock Nut to connect Tray Support Strap to the Workman® unit's lower Brace (Channel). Using one 3/8"-16 x 1" Lg. Flange Lock Hex. Hd. Cap Screw, slide screw through the Workman® unit's Lower Brace and through the center hole in the Tray Support Strap. Place a 3/8" Flange Lock Nut onto screw and tighten securely.

6. Place Oxygen and Acetylene Bottles onto the Bottle Tray as shown in FIG. 8. The Tray is designed for a 38" high Acetylene Tank with a diameter of 8 1/2" and a 48" high Oxygen Tank with a diameter of 7 1/2".

7. Install (99-0453) Bottle Restraint Assembly to Flatbed Assembly by using the two 1/2"-16 x 1-1/4" Lg. Flange Lock Hex. Hd. Cap Screws removed in Step 1. Be cautious not to install Bracket upside-down. The Bottle Restraint Assembly should have the longest slot closer to the front of the unit. Tighten the two screws securely in the existing tapped holes in unit. See Illustration on page 10, (Model No. 07269) Item 11. The Assembly is now complete.

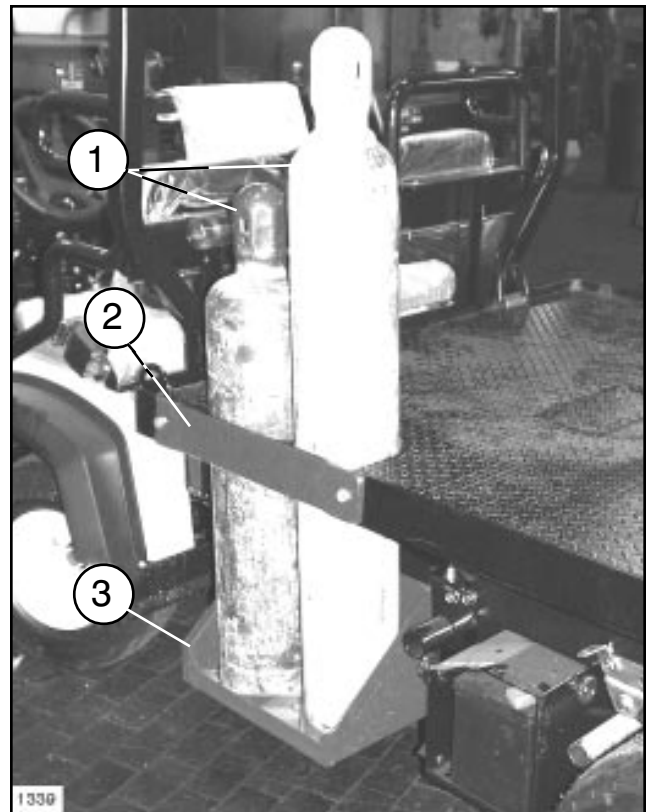
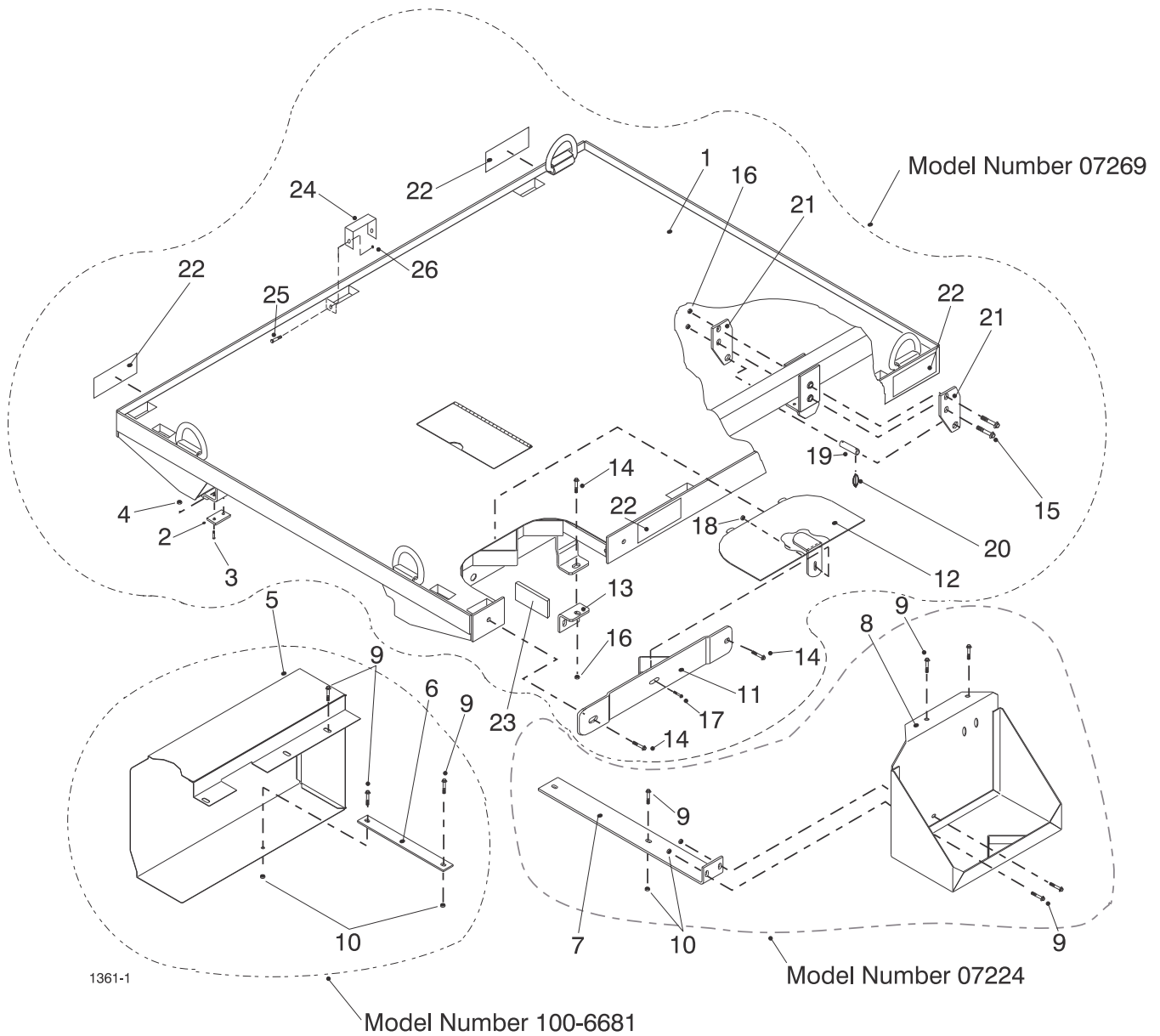


Fig. 8

1. Oxygen and Acetylene Bottles

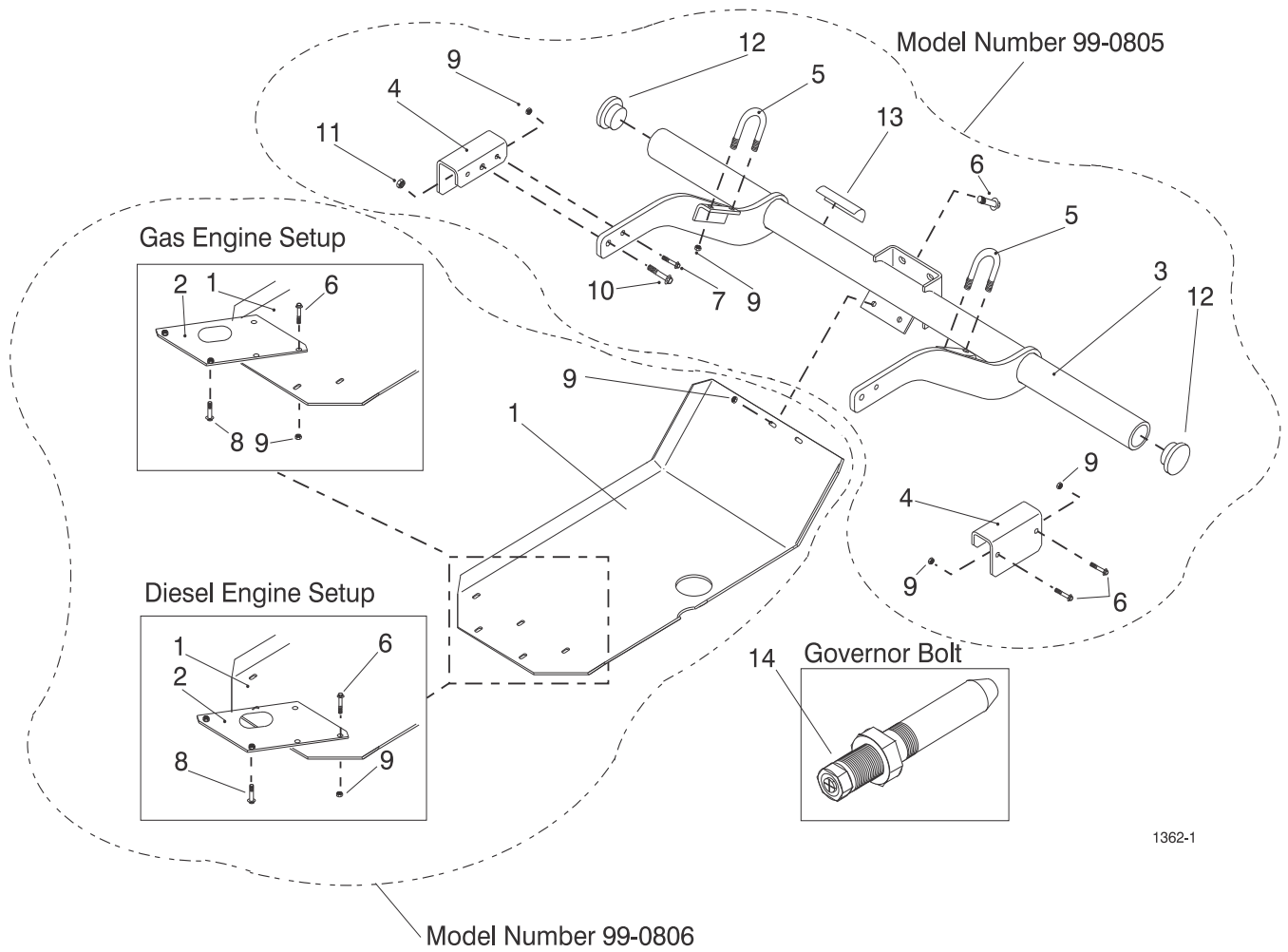
2. Bottle Restraint plate

3. Optional Bottle Tray



#	Part No.	Description	Qty
1	99-0433	Flatbed Assembly	1
2	99-9719	Block - Wear	4
3	3250-45	Screw - Plain Hd. 1/4"	8
4	32128-33	Nut - Flange Lock 1/4"	8
5	99-0459	Tank Guard Assembly	1
6	99-0463	Strap - Guard Brace	1
7	99-0480	Strap - Tray Support	1
8	99-0476	Bottle Tray Assembly	1
9	3234-11	Screw - Cap HH 3/8" Fing Lck	10
10	32128-43	Nut - Flange Lock 3/8"	5
11	99-0453	Bottle Restraint Assembly	1
12	99-0455	Cover Plate Assembly	1

#	Part No.	Description	Qty
13	92-2667	Bracket - Attachment Mount	2
14	3234-32	Screw - Cap HH 1/2" Fing Lck	4
15	325-17	Screw - Cap HH 1/2"	4
16	32128-49	Nut - Flange Lock 1/2"	6
17	3234-4	Screw - Cap HH 1/4"	1
18	32128-33	Nut - Flange Lock 1/4"	1
19	92-1233	Pin - Clevis	2
20	92-1298	Pin - Lynch	4
21	99-0451	Plate - Rear Pin	4
22	99-0488	Decal - Bed Warning	4
23	99-0547	Foam Tape 1/4" x 1 1/2 x 7"	4
24	99-0739	Strap Cover	8
25	3234-5	Screw - Cap HH 5/16" Fing Lck	16
26	32128-44	Nut - Flange Lock 5/16"	16



1362-1

#	Part No.	Description	Qty
1	99-0465	Plate - Skid	1
2	99-0466	Adjustment Plate Assembly	1
3	99-0468	Bumper Assembly	1
4	92-2700	Bracket - Hitch Arm	2
5	92-2752	U Bolt	2
6	3234-11	Screw - Cap HH 3/8" Flng Lck	9
7	323-8	Screw - Cap HH 3/8"	2
8	3234-9	Screw - Cap HH 3/8"	2

#	Part No.	Description	Qty
9	32128-43	Nut - Flange Lock 3/8"	16
10	325-6	Screw - Cap HH 1/2"	2
11	32128-49	Nut - Flange Lock 1/2"	2
12	99-0473	Cap - Bumper	2
13	92-2724	Decal - Hitch Rating	1
14	99-0475	Bolt - Governor	1
		Replaces Governor Torque Spring Set to protect against magnetic interference in industrial applications.	

†Item must be serviced by a Mitsubishi Authorized Toro Dealer/Distributor.



Helping you put quality into play.®