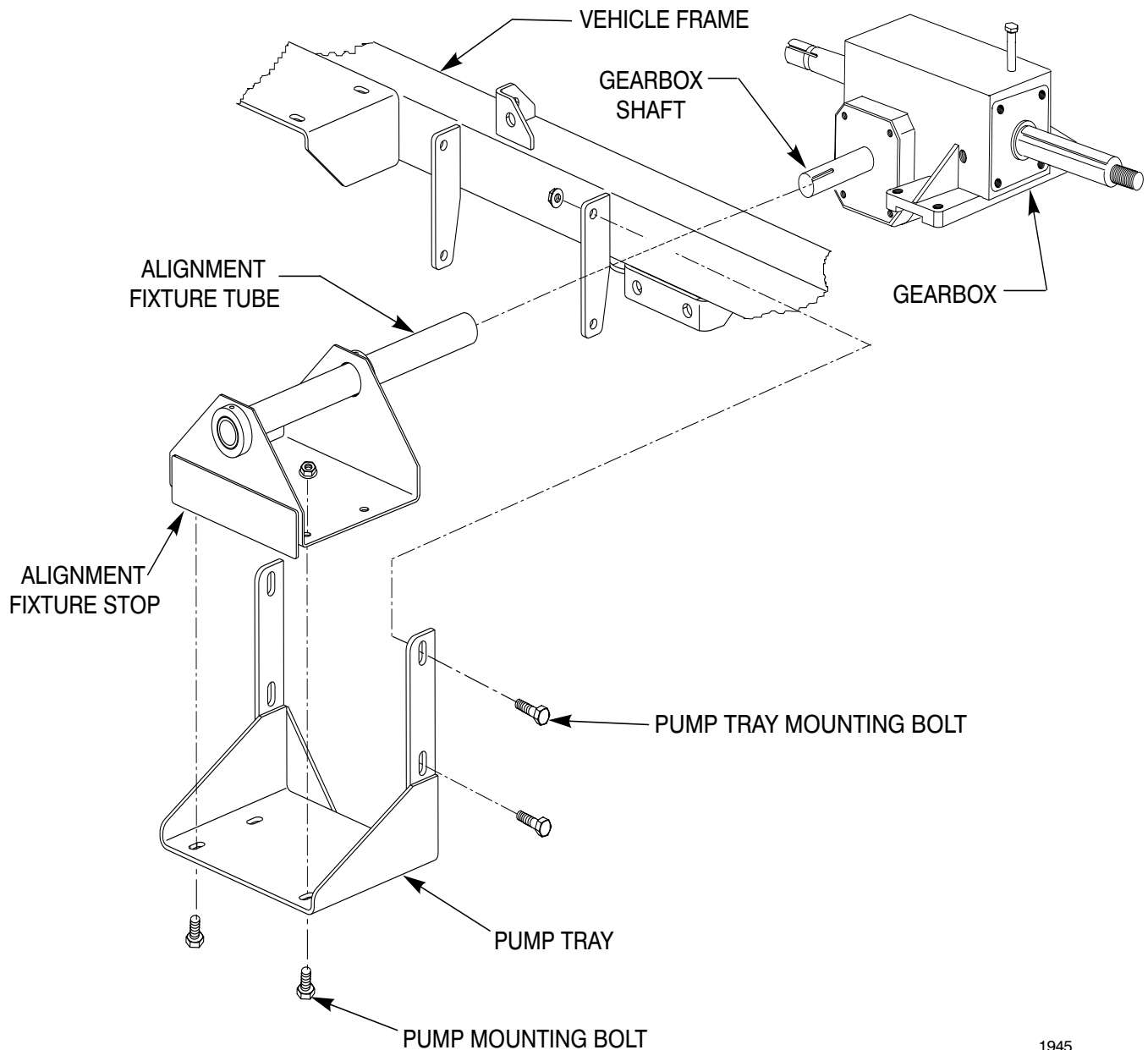




Part No. 104-8930

INSTRUCTION
SHEET

PUMP ALIGNMENT for Multi Pro® 1200 and 1250



1945

PUMP ALIGNMENT FIXTURE 104-8930

NOTICE:

Use this Instruction Sheet with the Pump Alignment Fixture to properly position and align Pump on the Multi Pro® 1200 and Multi Pro® 1250.

PUMP ALIGNMENT PROCEDURE:

- 1.** Disconnect Pump from Electric Clutch by loosening and removing the two (2) nuts which secure the coupling adapter to Clutch Mounting Plate.
- 2.** Remove four (4) Bolts securing Pump to Pump Tray. Lift Pump/Coupling assembly, with hoses still attached, and set aside.
- 3.** Remove four (4) Bolts securing Pump Tray to Vehicle Frame and remove Pump Tray.
- 4.** Unplug Electric Clutch and remove the Electric Clutch from the Gearbox shaft by removing Shoulder Bolt and center hub bolt.
- 5.** Place Pump Alignment Fixture on Pump Tray. Insert Pump Mounting Bolts, removed in Step 2, through holes in Fixture and Pump Tray. Slide Fixture so that front of PumpTray makes contact with Fixture Stop. Tighten at least two (2) Bolts and nuts to keep assembly stationary.
- 6.** Slide Alignment Fixture Tube onto Gearbox Shaft. This will ensure the Pump Tray is aligned to Gearbox shaft and at the proper height. Use the existing Pump Tray Mounting Bolts to Secure Pump Tray to Vehicle Frame.
- 7.** Remove Pump Mounting Bolts securing the Pump Tray and Fixture together. Slide off and remove Pump Alignment Fixture. Pump Tray will be at proper height.
- 8.** Reinstall Electric Clutch to Gearbox and secure with Bolts removed in step 4. See Pump Drive assembly illustration in Parts Manual.
- 9.** Mount Pump to Pump Tray and install Bolts loosely.
- 10.** Assemble coupling to Electric Clutch and tighten Bolts securely.
- 11.** Tighten Pump Mounting Bolts securely.
- 12.** Reconnect Electric Harness plug to Electric Clutch. Use tie wraps to ensure that Harness is secured away from all moving parts.

NOTES: