

Light Flasher Kit

Kit No. 135-2892

Installation Instructions

For Gas Models with 3-Pin Accessory Connector Serial No. 312,000,000 and Higher

For Diesel Models Serial No. 406,294,345 and Higher

For Electric Models Serial No. 416,150,475 and Higher

Safety Alert Symbol

This Safety Alert Symbol (Figure 1) is used both in this instruction sheet and on the machine to identify important safety messages which must be followed to avoid accidents

This symbol means: **ATTENTION! BECOME ALERT! YOUR SAFETY IS INVOLVED!**



g000502

Figure 1
Safety Alert Symbol

The safety alert symbol appears above information which alerts you to unsafe actions or situations and will be followed by the word **DANGER**, **WARNING**, or **CAUTION**.

DANGER: Indicates an imminently hazardous situation which, if not avoided, **Will** result in death or serious injury.

WARNING: Indicates a potentially hazardous situation which, if not avoided, **Could** result in death or serious injury.

CAUTION: Indicates a potentially hazardous situation which, if not avoided, **May** result in minor or moderate injury.

This instruction sheet uses two other words to highlight information. **Important** calls attention to special mechanical information and **Note** emphasizes general information worthy of special attention.

⚠ WARNING

While maintenance or adjustments are being made, someone could start the machine. Accidental starting of the machine could seriously injure you or other bystanders.

Remove the key from the ignition switch and engage parking brake before you do any maintenance.

Note: Determine the left and right sides of the machine from the normal operating position.

Note: Park the machine on a level surface. Make sure all moving parts have stopped, parking brake is engaged, and the key has been removed. Allow the machine to cool before starting these instructions.

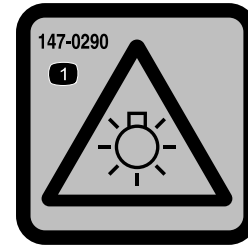


Safety and Instructional Decals

- Keep all safety signs legible. Remove all grease, dirt and debris from safety signs and instructional labels.
- Replace all worn, damaged, or missing safety signs.
- When replacement components are installed, be sure that current safety signs are affixed to the replaced components.
- If an attachment or accessory has been installed, make sure current safety signs are visible.
- New safety signs may be obtained from your authorized equipment dealer or distributor.
- Safety signs may be affixed by peeling off the backing to expose the adhesive surface. Apply

only to a clean, dry surface. Smooth to remove any air bubbles.

- Familiarize yourself with the following safety signs and instruction labels. They are critical to the safe operation of your commercial machine.



147-0290

1. Warning—light is bright; do not look directly into the light

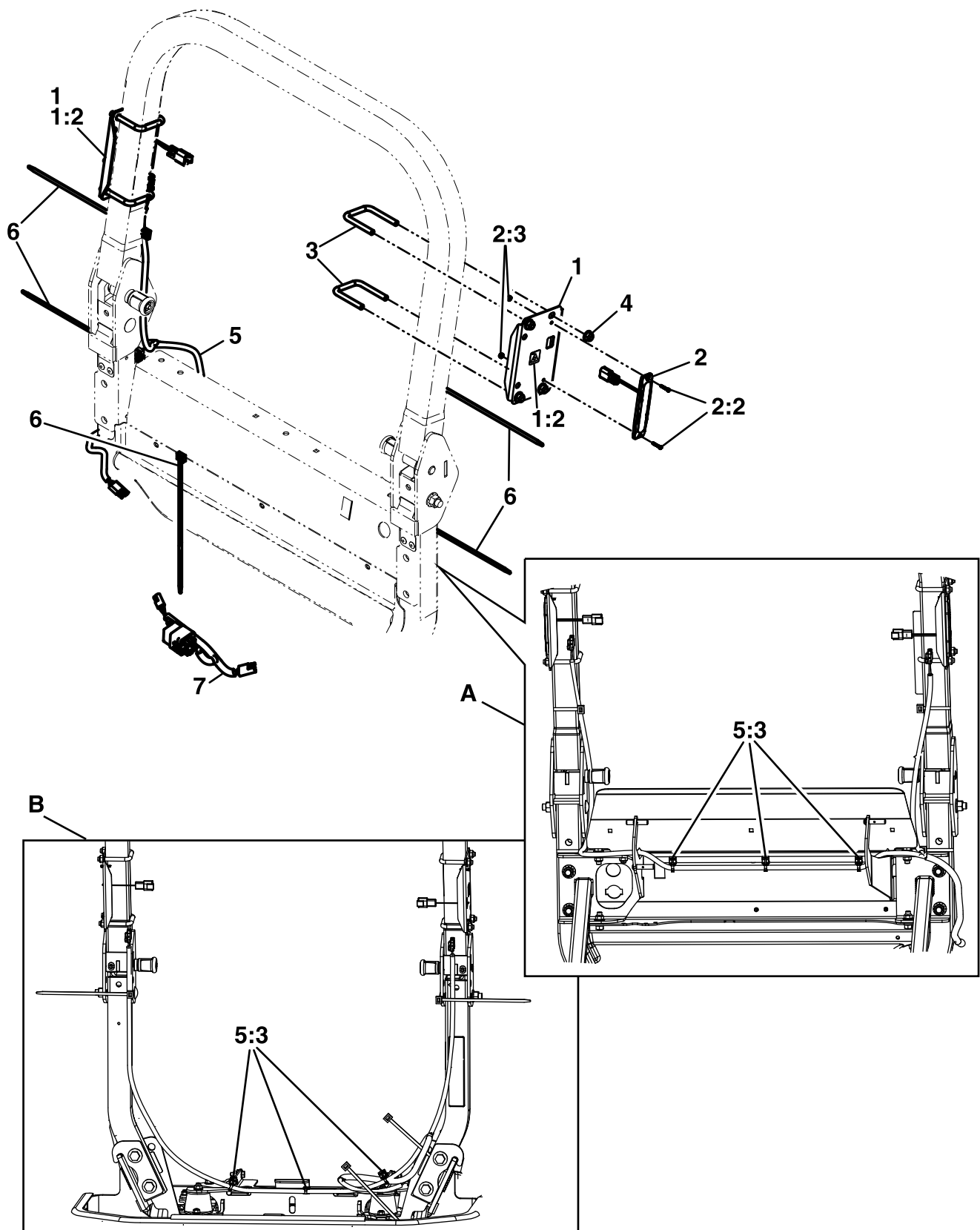
Loose Parts

Use the chart below to verify that all parts have been shipped.

Item No.	Part No.	Description	Qty
1	146-4631	Asm- Flasher Bracket W/ Decals	2
1:2	147-0290	Decal-Light, Warning	2
2	135-5166	Asm-Light-Strobe	2
2:2	363-8269	Screw-PHFH #6-32 X 3/4	4
2:3	32149-6	Nut-Hex Flg #6-32 Lock	4
3	130-6549	Bolt-U	4

Item No.	Part No.	Description	Qty
4	104-8301	Nut-Nyloc 3/8-16 Flg	8
5	135-7196	Harness-Wire, Flasher	2
5:3	32180-082	Clip-Edge W/Tie	3
6	1-643115	Tie-Plastic	5
7*	135-1531	Harness-Wiring Accessory	1

*For Diesel models and Gas models with 3-Pin accessory port only.



g521673

Figure 2

A. Rear view of routing for Diesel and Electric models

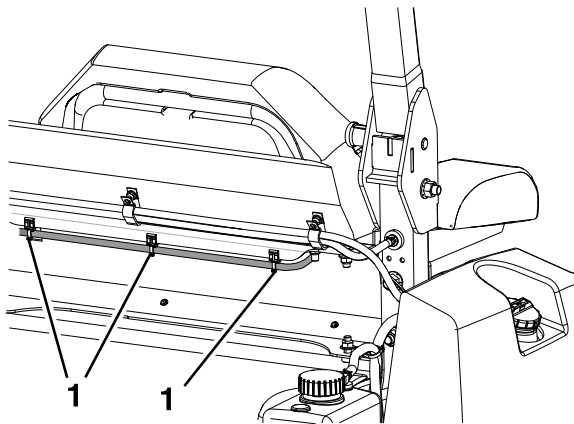
B. Rear view of routing for Gas models

Installation Instructions

1. Make sure all moving parts have stopped, parking brake is engaged, and key has been removed.
 - For Gas and Diesel Models: Disconnect the negative battery cable.
 - For Electric Models: Turn the battery-disconnect switch to the Off position.
2. Slide or tip the seat forward.
3. Insert the light harness through the flasher bracket. Secure the light to the bracket mount with two #6-32 x 3/4 inch screws and #6 lock nuts for both the left and right sides.
4. Use the two U-bolts to secure the flasher bracket to the LH ROPS and secure with four 3/8-16 inch nyloc nuts. Repeat this step for the RH side.

Note: Do Not install the light in a location where it covers a ROPS safety decal.

5. Route the harness to back side of the ROPS. Loosely secure it in place.
6. Connect each light to the main light harness.
7. Route the harness
 - For Gas Models: Route the harness across the seat mount and secure into place as shown in [Figure 2](#).
 - For Diesel and Electric: Open the hood or remove the rear cover and route the harness along the cross channel and secure with clips as shown in [Figure 3](#).



g281718

Figure 3

Hood removed for clarity
Diesel model shown

- For Gas and Diesel Models: Connect the accessory harness to the light harness. Plug the light harness accessory into the machine harness and zip tie the two harnesses together.
 - For Electric Models: Plug the light harness directly into the machine harness.
9. Coil the excess wire as necessary and use the remaining zip ties to secure the light harness to the machine as shown in [Figure 2](#).
 10. Reconnect the negative battery cable or turn the battery-disconnect switch to the On position.

Note: Make sure the ROPS can be lowered, raised, and locked into place without pinching or damaging the wire harness.

Note: Do Not place zip ties over a safety ROPS decal.

1. Clip

8. Remove and retain the plug from the accessory connector on the machine harness.