



Fuel Filter
Grandstand® HDX Mower
 Model No. 163-4159

Installation Instructions

Installation

Loose Parts

Use the chart below to verify that all parts have been shipped.

Procedure	Description	Qty.	Use
1	No parts required	–	Prepare the machine.
2	No parts required	–	Remove the fuel filter.
3	Double-loop cable tie Fuel filter Fuel line	1 1 1	Install the fuel filter.



1

Preparing the Machine

No Parts Required

Procedure

Note: Determine the left and right sides of the machine from the normal operating position.

1. Park the machine on a level surface.
2. Disengage the blade-control switch.
3. Move the motion-control levers to the NEUTRAL-LOCK position.
4. Engage the parking brake.
5. Shut off the machine and remove the key.
6. Wait for all moving parts to stop.
7. Close the fuel-shutoff valve.

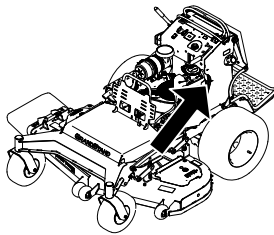


Figure 1

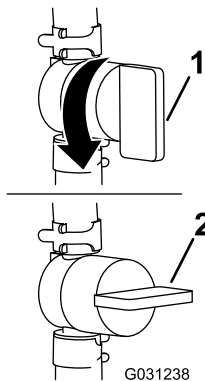


Figure 2

1. Open

2. Closed

2

Removing the Fuel Filter

No Parts Required

Procedure

⚠ DANGER

In certain conditions, fuel is extremely flammable and highly explosive. A fire or explosion from fuel can burn you and others and can damage property.

Refer to your *Operator's Manual* for a complete list of fuel-related precautions.

1. Remove the cable tie securing the fuel filter to the fuel pump.

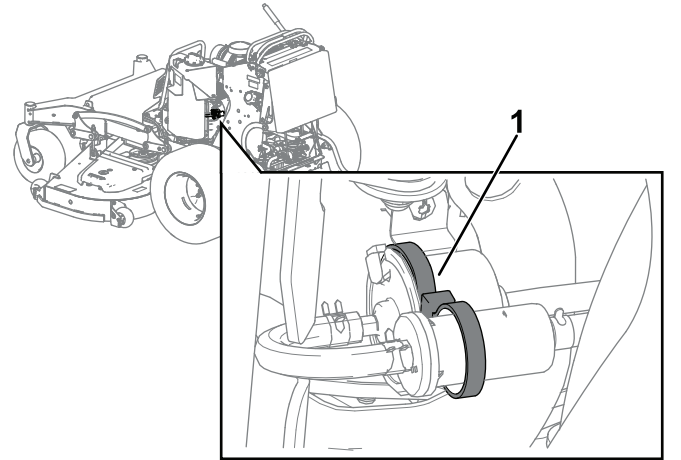


Figure 3

1. Cable tie

- Use pliers to squeeze the clamp and move it away from the fuel pump.

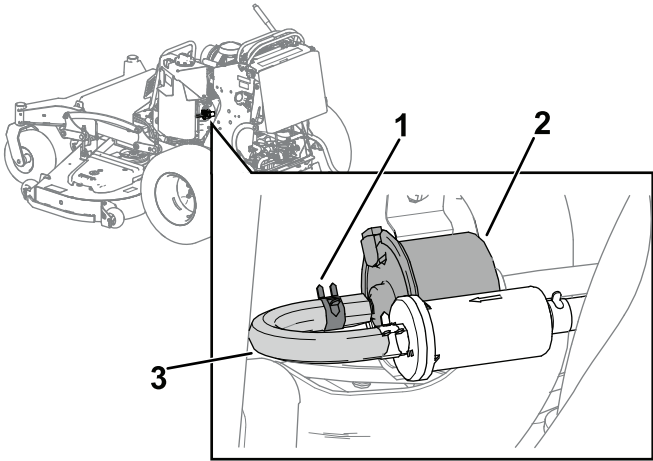


Figure 4

g529345

- Clamp
- Fuel pump
- Fuel line

- Remove the fuel line from the fuel pump.
- Use pliers to squeeze the clamp and move it away from the fuel filter.

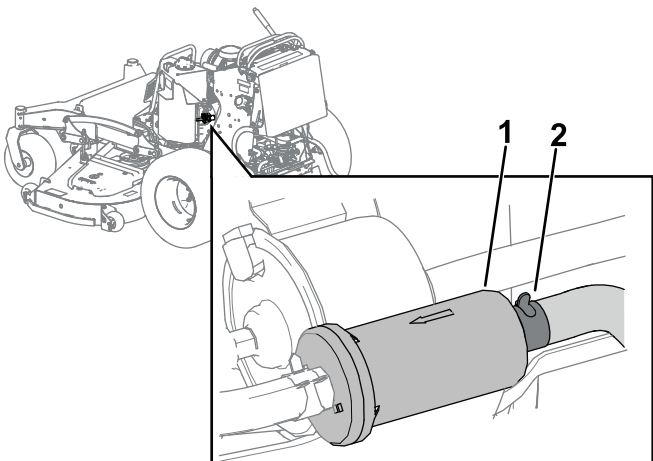


Figure 5

g529348

- Fuel filter
- Clamp

- Remove the fuel filter from the machine.

3

Installing the Fuel Filter

Parts needed for this procedure:

1	Double-loop cable tie
1	Fuel filter
1	Fuel line

Procedure

- Wrap the double-loop cable tie around the fuel filter and through the first strap channel.

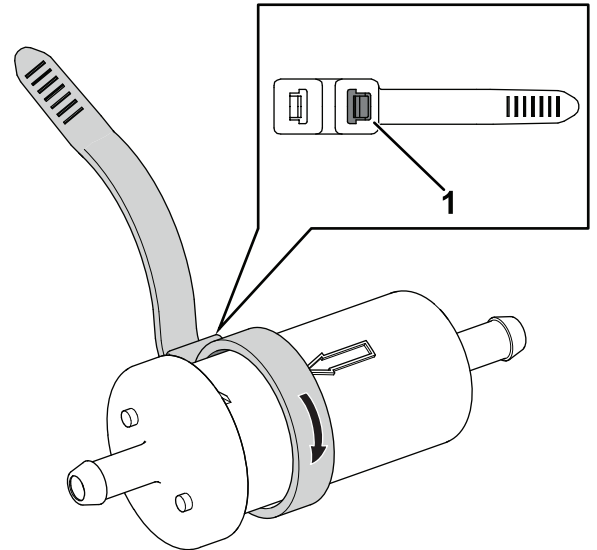


Figure 6

g529350

- First strap channel

- Connect the new fuel line to the fuel filter and secure it with the clamp.

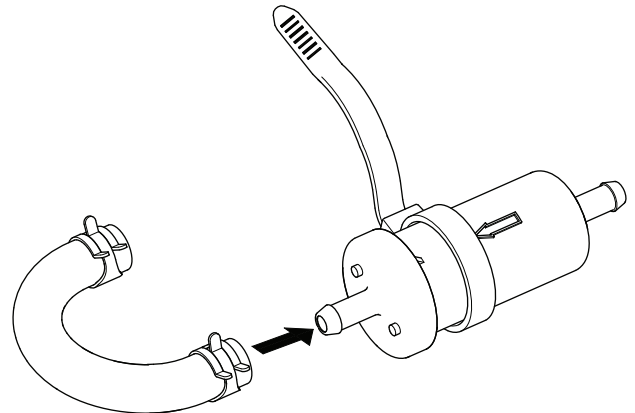


Figure 7

g529353

3. Use the double-loop cable tie to install the fuel filter to the fuel pump.

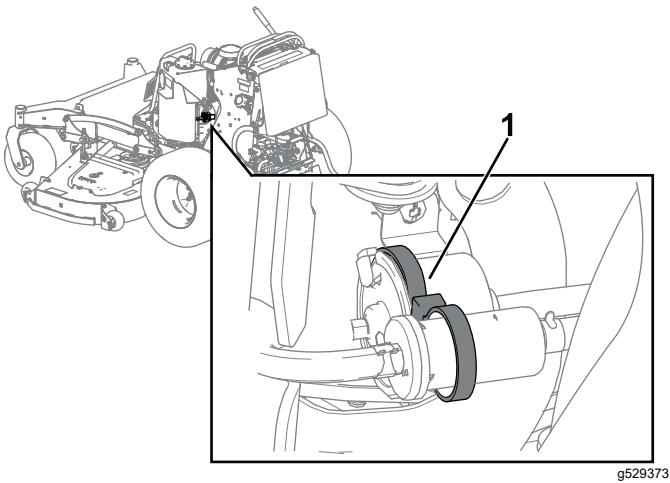


Figure 8

g529373

1. Cable tie

5. Connect the line on the machine to the fuel filter and secure it with the clamp.

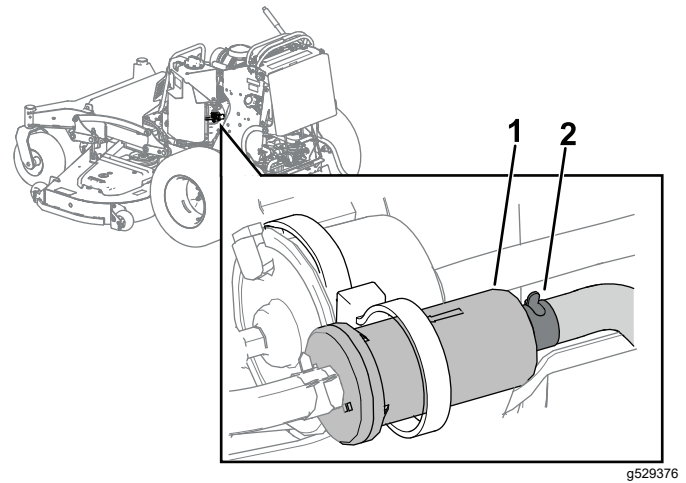


Figure 10

g529376

1. Fuel filter 2. Clamp

4. Connect the new fuel line to the fuel pump and secure it with the clamp.

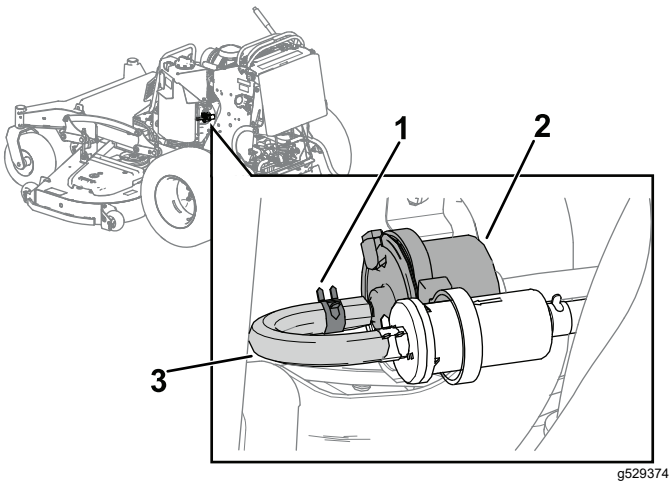


Figure 9

g529374

1. Clamp 2. Fuel pump
3. New fuel line